

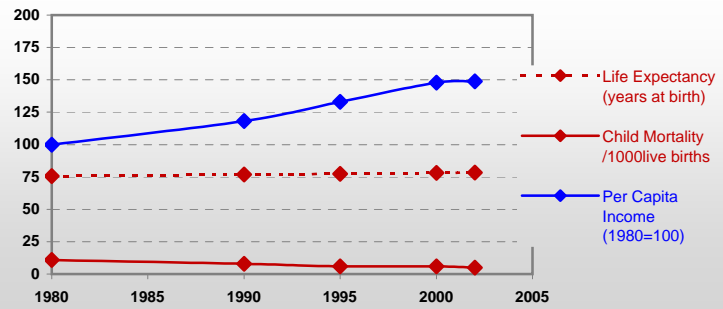


Country profiles

Netherlands

General / Welfare

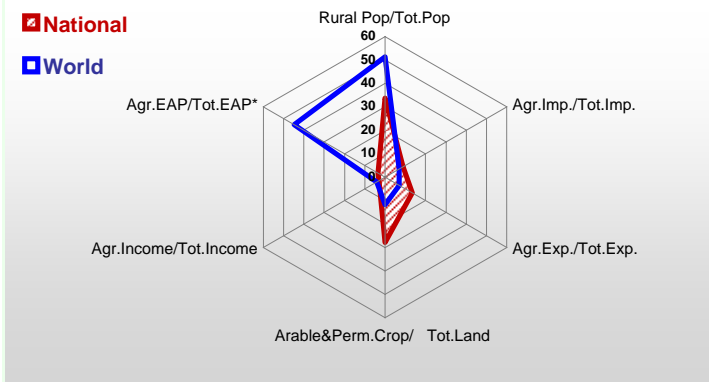
Population ^{04 *}	16 227
Per Capita Income ^{02 **}	31 287
Per Capita Agricultural Income ^{02**}	28 237
Total Exports ^{02 ****}	244 162
Total Imports ^{02 ****}	219 358
Agric. External Assistance ^{99-01 ***}	-572 489
Food Consumption Inequality (G) ^{ly}	0,11
Income Inequality (G) ^{ly}	0,33
Land Inequality (G) ^{ly}	0,57
Undernourished Population % ⁰⁰⁻⁰²	< 2.5



* 1000 ** \$ **** Million \$ --- (G) : Gini Coefficient --- Income refers to GDP at 1995 Constant Prices

Agriculture In The Economy^{ly}

Resources

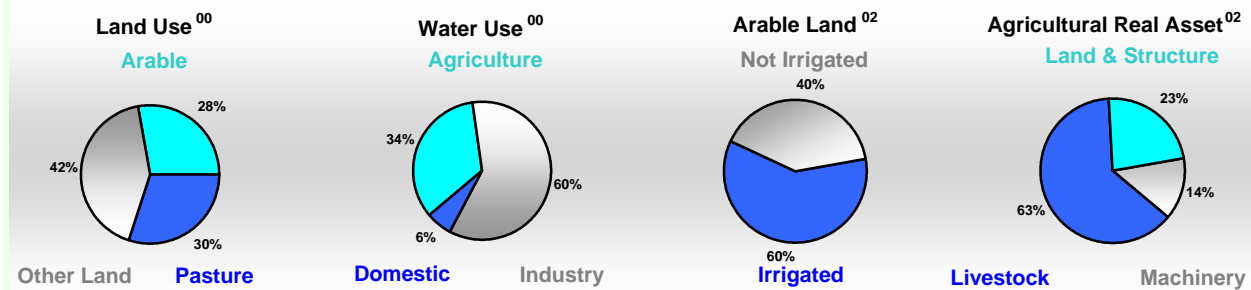


Arable Land ^{00 *}	910
Permanent Crops ^{00 *}	34
Pasture ^{00 *}	1 012
Cattle & Buffaloes ^{03 **}	3 780
Sheep & Goats ^{03 **}	1 565
Tractors ^{02 *}	163
Harvesters&Threshers ^{02 *}	6
Fertilizers Production ^{02 ***}	1 139 000
Fertilizers Consumption ^{02 ***}	336 000
Rainfall Index ^{02 (mm)}	893

* EAP : Economically Active Population

* 1000ha ** 1000heads *** Tonnes N,P₂O₅,K₂O

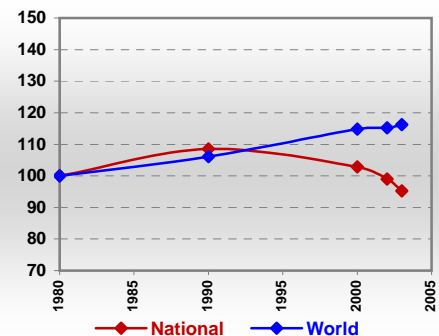
Resources Distribution



Production

Agriculture ^{03 *}		Pulpwd.,Rnd&Split ^{**}	
Cereals	1 861	Roundwood ^{**}	839
Meat	2 194	Log:Saw&Veneer ^{**}	398
Fruits & Vegetables	4 362	Sawnwood ^{**}	258
Roots & Tubers	6 469	Wood Charcoal [*]	1
Pulses	16	Woodfuel ^{**}	136
Oilseeds & Nuts	3	Wood Pulp [*]	132
Sugar Crops	6 210	Wood-based Panels ^{**}	23
Tobacco	-	Fisheries^{02 *}	
Fibre Crops	4	Pelagic	341
Forestry⁰²		Freshwater	9
Indust.Roundwood ^{**}	703	Demersal	105
Paper, Paperboard [*]	3 346	Molluscs	49

Per Capita Agricultural Production Index



* 1000Tonnes ** 1000m³

Time reference= ⁹⁹⁻⁰¹ :1999-2001, ⁰⁰ :2000, ⁰² :2002, ⁰⁰⁻⁰² :2000-2002, ⁰³ :2003, ⁰⁴ :2004, ^{ly} :Latest Available Year



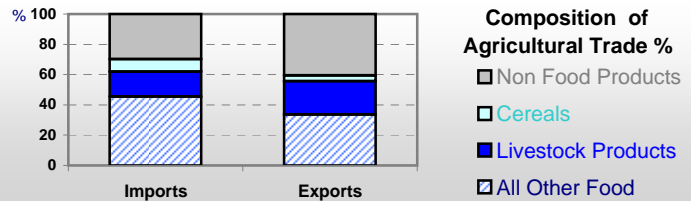
Country profiles

Netherlands

Trade ⁰²

Agricultural Imports *	19 473
% 4 Major Imports in Agr.Imp	12
% Agr. Imports in Tot. Imports	9
Fishery Imports *	1 333
Forestry Imports *	4 262
Agricultural Exports *	32 516
% 4 Major Exports in Agr.Exp.	21
% Agr. Exports in Tot.Exports	13
Fishery Exports *	1 803
Forestry Exports *	2 570

* Million \$



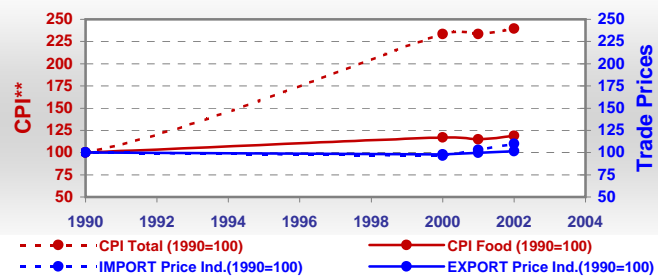
Trade Partners & Products

Major Import Partner	Germany	Belgium	Brazil
Major Export Partner	Germany	France	UK
Major Imports	Soybeans	Cocoa Beans	Cake Soybean
Major Exports	Cigarettes	Cheese W Cow	Beer Barley

Prices

Producer Prices ⁰⁰⁻⁰²	\$*	\$ Green *
Wheat	97	89
Rice	-	-
Maize	168	153
Soybean	-	-
Coffee	-	-
Tobacco	-	-
Cow Milk	304	279
Cattle (Live Weight)	1 160	1 061
Pig (Live Weight)	881	808
Chicken (Live Weight)	599	549

Consumer and Agricultural Trade Price Indices

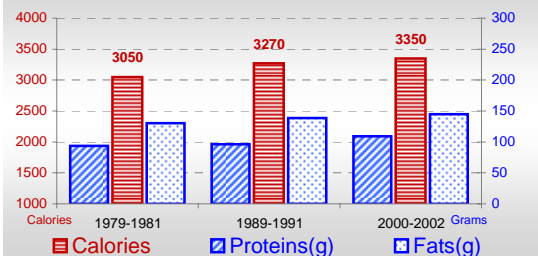


* per Tonne

** CPI : Consumer Price Index

Consumption

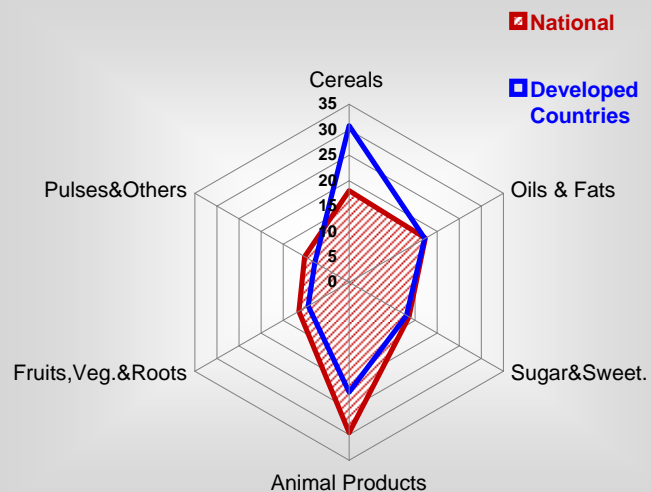
Per Capita Daily Consumption



Per Capita Daily Calorie Intake From Selected Food Items ⁰⁰⁻⁰²

Rice	58
Wheat	491
Maize	18
Sorghum	-
Potatoes	168
Cassava	-
Sugar	448
Soybean Oil	148
Palm Oil	46
Milk	437
Anim.Fats(Raw&Butter)	161
Eggs	67
Pig Meat	243
Poultry Meat	47
Bovine Meat	117
Sheep & Goats Meat	7

Source of Dietary Energy Consumption % ⁰⁰⁻⁰²



Food Balance ⁰⁰⁻⁰² (1000Tonnes)

Food Groups	Production (+)	Exports (-)	Imports (+)	Seed, Feed, Other Uses (-)	Consumption (=)
Cereals	1 654	2 011	7 030	5 437	1 236
Veg.oils	1 330	2 245	2 451	1 270	266
Sugar&Sw.	2 176	569	450	1 302	755
Roots&Tub.	7 502	4 121	5 110	6 992	1 498
Meat	2 725	1 998	697	-5	1 429
Milk	11 096	7 393	4 900	3 082	5 521

Time reference= ⁹⁹⁻⁰¹:1999-2001, ⁰⁰:2000, ⁰²:2002, ⁰⁰⁻⁰²:2000-2002, ⁰³:2003, ⁰⁴:2004, ^{ly}:Latest Available Year