



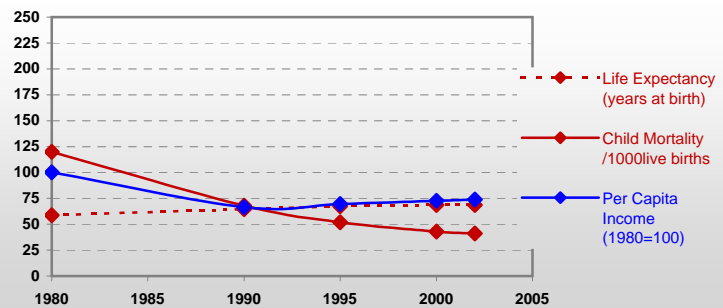
Country profiles

Nicaragua



General / Welfare

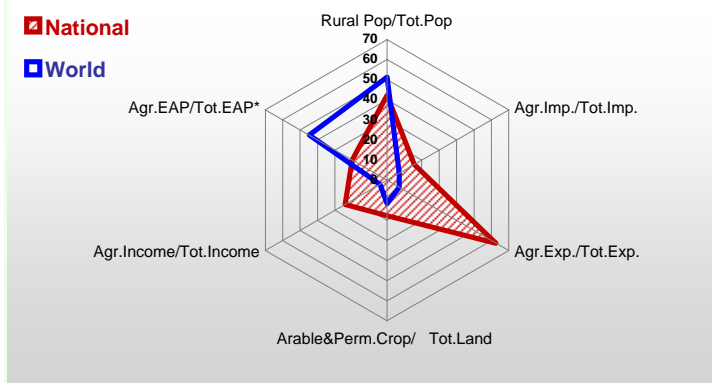
Population ^{04 *}	5 597
Per Capita Income ^{02 **}	496
Per Capita Agricultural Income ^{02**}	624
Total Exports ^{02 ****}	917
Total Imports ^{02 ****}	1 853
Agric. External Assistance ^{99-01 ***}	215 160
Food Consumption Inequality (G) ^{ly}	0,17
Income Inequality (G) ^{ly}	0,55
Land Inequality (G) ^{ly}	0,72
Undernourished Population % ⁰⁰⁻⁰²	27



*1000 ** \$ **** 1000 \$ ***** Million \$ --- (G) : Gini Coefficient --- Income refers to GDP at 1995 Constant Prices

Agriculture In The Economy^{ly}

Resources

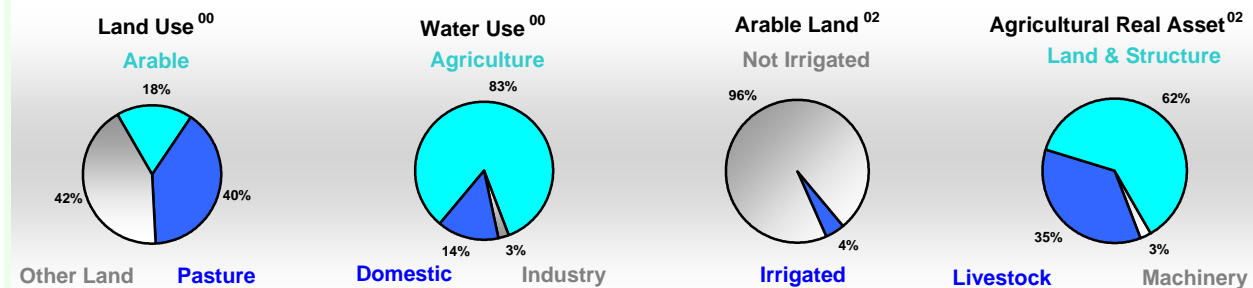


Arable Land ^{00 *}	1 917
Permanent Crops ^{00 *}	234
Pasture ^{00 *}	4 815
Cattle & Buffaloes ^{03 **}	3 500
Sheep & Goats ^{03 **}	11
Tractors ^{02 *}	2
Harvesters&Threshers ^{02 *}	-
Fertilizers Production ^{02 ***}	-
Fertilizers Consumption ^{02 ***}	53 796
Rainfall Index ^{02 (mm)}	1 869

* EAP : Economically Active Population

* 1000ha ** 1000heads *** Tonnes N,P₂O₅,K₂O

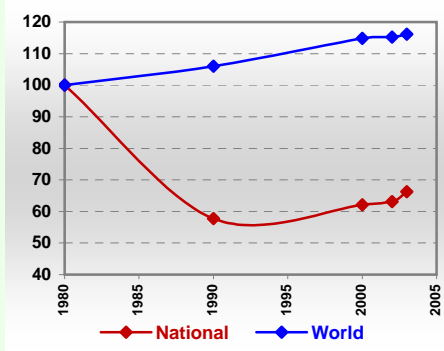
Resources Distribution



Production

Agriculture^{03 *}		Pulpwd.,Rnd&Split ^{**}	-
Cereals	972	Roundwood ^{**}	5 951
Meat	136	Log:Saw&Veneer ^{**}	124
Fruits & Vegetables	262	Sawnwood ^{**}	45
Roots & Tubers	140	Wood Charcoal [*]	22
Pulses	230	Woodfuel ^{**}	5 827
Oilseeds & Nuts	42	Wood Pulp [*]	-
Sugar Crops	4 101	Wood-based Panels ^{**}	8
Tobacco	2	Fisheries^{02 *}	
Fibre Crops	5	Pelagic	2
Forestry⁰²		Freshwater	1
Indust.Roundwood ^{**}	124	Demersal	4
Paper, Paperboard [*]	-	Molluscs	0

Per Capita Agricultural Production Index



* 1000Tonnes ** 1000m³

Time reference= ⁹⁹⁻⁰¹ :1999-2001, ⁰⁰ :2000, ⁰² :2002, ⁰⁰⁻⁰² :2000-2002, ⁰³ :2003, ⁰⁴ :2004, ^{ly} :Latest Available Year

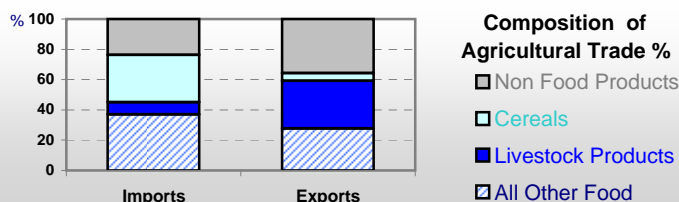


Country profiles

Nicaragua

Trade ⁰²

Agricultural Imports *	279
% 4 Major Imports in Agr.Imp	22
% Agr. Imports in Tot. Imports	16
Fishery Imports *	6
Forestry Imports *	17
Agricultural Exports *	372
% 4 Major Exports in Agr.Exp.	42
% Agr. Exports in Tot.Exports	62
Fishery Exports *	48
Forestry Exports *	14



Trade Partners & Products

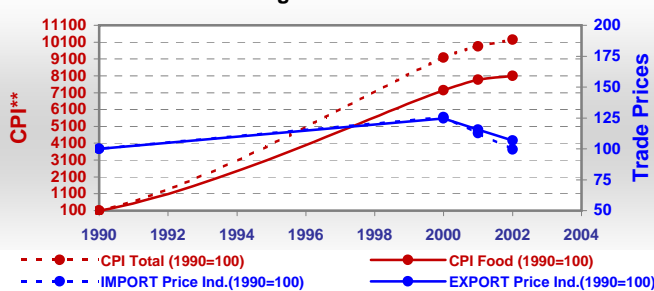
Major Import Partner	USA	Costa Rica	Guatemala
Major Export Partner	USA	El Salvador	Honduras
Major Imports	Food Prep	Wheat	Tobacco
Major Exports	Coffee,Green	Beef Bonless	Groundnt She

* Million \$

Prices

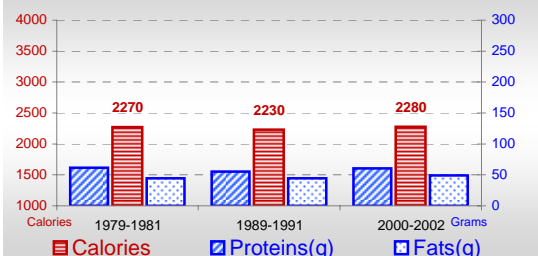
Producer Prices ⁰⁰⁻⁰²	\$*	\$ Green *
Wheat	-	-
Rice	206	196
Maize	175	165
Soybean	215	204
Coffee	1 216	1 152
Tobacco	5 170	4 935
Cow Milk	203	193
Cattle (Live Weight)	851	813
Pig (Live Weight)	1 233	1 171
Chicken (Live Weight)	1 153	1 095

Consumer and Agricultural Trade Price Indices

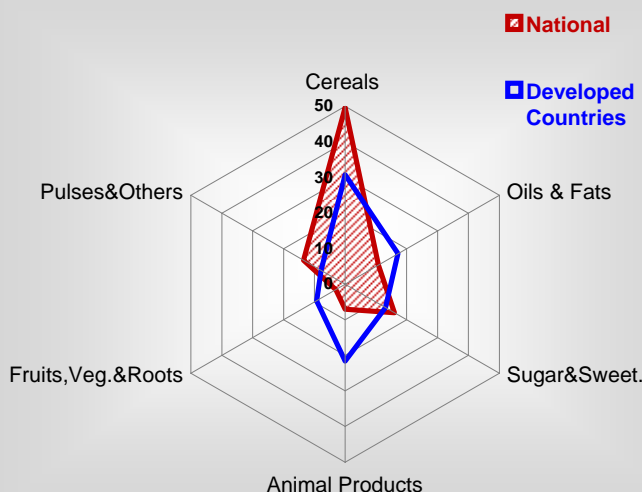


Consumption

Per Capita Daily Consumption



Source of Dietary Energy Consumption % ⁰⁰⁻⁰²



Per Capita Daily Calorie Intake From Selected Food Items ⁰⁰⁻⁰²

Rice	316
Wheat	194
Maize	496
Sorghum	116
Potatoes	15
Cassava	13
Sugar	354
Soybean Oil	94
Palm Oil	71
Milk	54
Anim.Fats(Raw&Butter)	21
Eggs	14
Pig Meat	5
Poultry Meat	45
Bovine Meat	28
Sheep & Goats Meat	-

Food Balance ^{00-02 (1000Tonnes)}

Food Groups	Production (+)	Exports (-)	Imports (+)	Seed, Feed, Other Uses (-)	Consumption (=)
Cereals	709	25	274	299	659
Veg.oils	15	2	66	30	49
Sugar&Sw.	361	180	5	-7	193
Roots&Tub.	85	5	20	30	70
Meat	135	35	4	-3	107
Milk	248	111	49	-10	196

Time reference= ⁹⁹⁻⁰¹:1999-2001, ⁰⁰:2000, ⁰²:2002, ⁰⁰⁻⁰²:2000-2002, ⁰³:2003, ⁰⁴:2004, ^{ly}:Latest Available Year