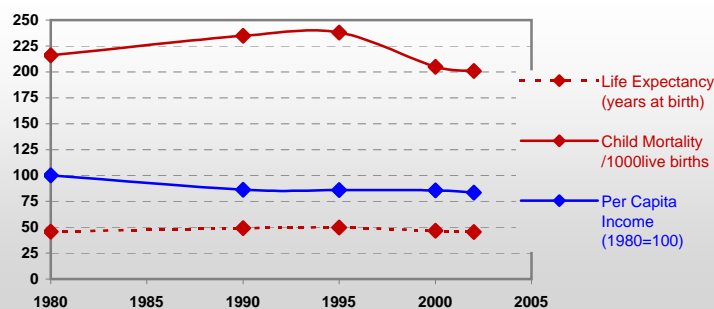


Nigeria



General / Welfare

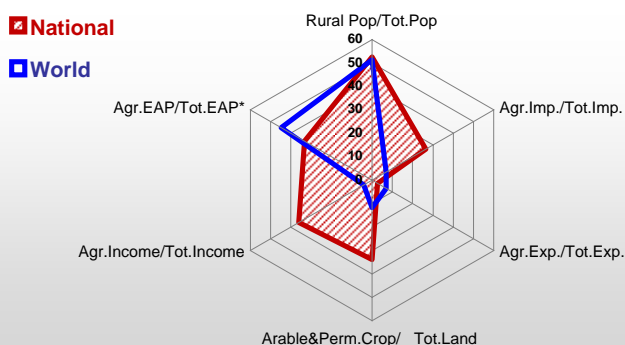
Population ^{04 *}	127 117
Per Capita Income ^{02 **}	248
Per Capita Agricultural Income ^{02**}	309
Total Exports ^{02 ****}	15 107
Total Imports ^{02 ****}	7 547
Agric. External Assistance ^{99-01 ***}	110 883
Food Consumption Inequality (G) ^{ly}	0,15
Income Inequality (G) ^{ly}	0,51
Land Inequality (G) ^{ly}	-
Undernourished Population % ⁰⁰⁻⁰²	9



* 1000 ** \$ **** Million \$ --- (G) : Gini Coefficient --- Income refers to GDP at 1995 Constant Prices

Agriculture In The Economy^{ly}

Resources

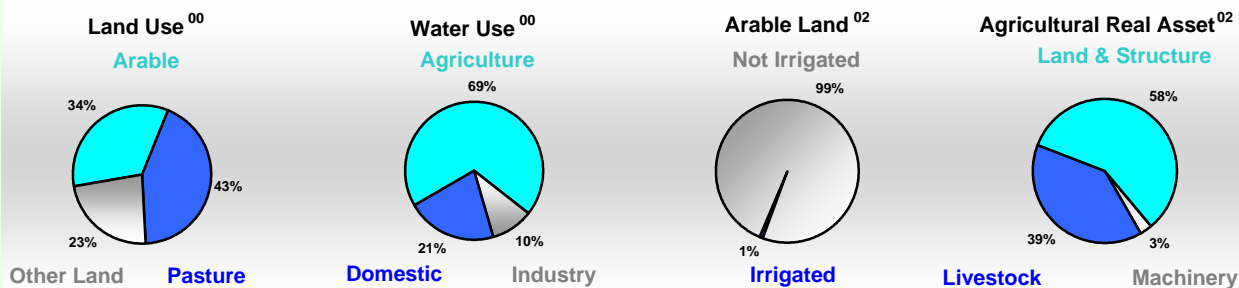


Arable Land ^{00 *}	28 200
Permanent Crops ^{00 *}	2 650
Pasture ^{00 *}	39 200
Cattle & Buffaloes ^{03 **}	15 164
Sheep & Goats ^{03 **}	49 500
Tractors ^{02 *}	1
Harvesters&Threshers ^{02 *}	-
Fertilizers Production ^{02 ***}	-
Fertilizers Consumption ^{02 ***}	166 200
Rainfall Index ^{02 (mm)}	1 324

* EAP : Economically Active Population

* 1000ha ** 1000heads *** Tonnes N,P₂O₅,K₂O

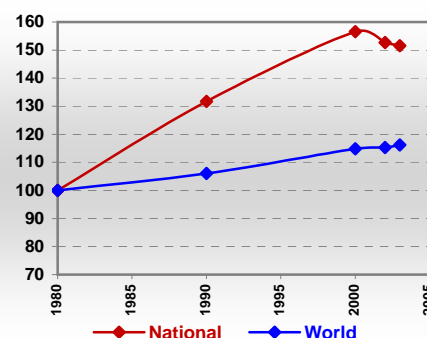
Resources Distribution



Production

Agriculture^{03 *}		
Cereals	24 457	Pulpwd.,Rnd&Split ^{**}
Meat	1 042	Roundwood ^{**}
Fruits & Vegetables	17 419	Log:Saw&Veneer ^{**}
Roots & Tubers	66 629	Sawnwood ^{**}
Pulses	2 250	Wood Charcoal [*]
Oilseeds & Nuts	2 569	Woodfuel ^{**}
Sugar Crops	548	Wood Pulp [*]
Tobacco	9	Wood-based Panels ^{**}
Fibre Crops	141	Fisheries^{02 *}
Forestry⁰²		Pelagic
Indust.Roundwood ^{**}	9 418	Freshwater
Paper, Paperboard [*]	19	Demersal
		Molluscs

Per Capita Agricultural Production Index



* 1000Tonnes ** 1000m³

Time reference= ⁹⁹⁻⁰¹ :1999-2001, ⁰⁰ :2000, ⁰² :2002, ⁰⁰⁻⁰² :2000-2002, ⁰³ :2003, ⁰⁴ :2004, ^{ly} :Latest Available Year

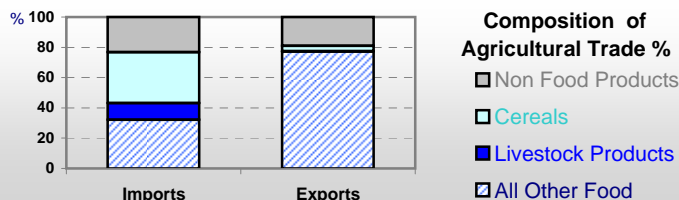


Country profiles

Nigeria

Trade ⁰²

Agricultural Imports *	1 996
% 4 Major Imports in Agr.Imp	43
% Agr. Imports in Tot. Imports	26
Fishery Imports *	213
Forestry Imports *	123
Agricultural Exports *	407
% 4 Major Exports in Agr.Exp.	74
% Agr. Exports in Tot.Exports	3
Fishery Exports *	37
Forestry Exports *	19



Trade Partners & Products

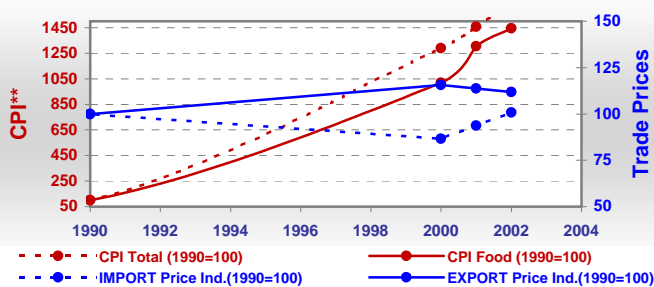
Major Import Partner			
Major Export Partner			
Major Imports	Wheat	Mil Rice	Sugar Refind
Major Exports	Cocoa Beans	Rubber Dry	Cocoa Butter

* Million \$

Prices

Producer Prices ⁰⁰⁻⁰²	\$*	\$ Green *
Wheat	441	223
Rice	419	214
Maize	298	152
Soybean	369	186
Coffee	1 433	728
Tobacco	4 030	2 051
Cow Milk	308	158
Cattle (Live Weight)	1 350	692
Pig (Live Weight)	756	383
Chicken (Live Weight)	2 120	1 088

Consumer and Agricultural Trade Price Indices

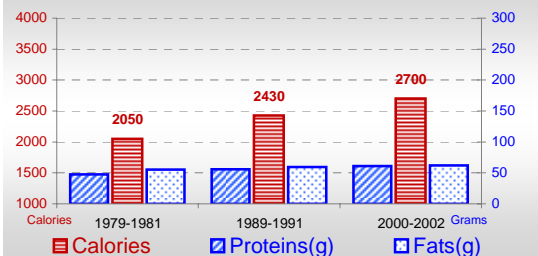


* per Tonne

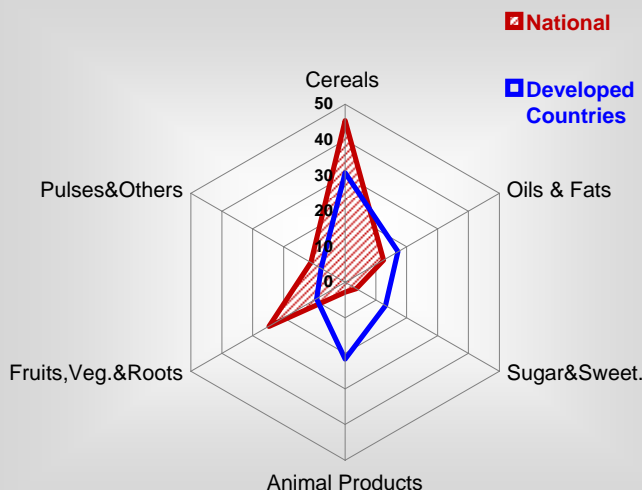
** CPI : Consumer Price Index

Consumption

Per Capita Daily Consumption



Source of Dietary Energy Consumption % ⁰⁰⁻⁰²



Per Capita Daily Calorie Intake From Selected Food Items ⁰⁰⁻⁰²

Rice	255
Wheat	136
Maize	179
Sorghum	360
Potatoes	6
Cassava	263
Sugar	95
Soybean Oil	1
Palm Oil	150
Milk	10
Anim.Fats(Raw&Butter)	7
Eggs	11
Pig Meat	13
Poultry Meat	3
Bovine Meat	12
Sheep & Goats Meat	7

Food Balance ⁰⁰⁻⁰² (1000Tonnes)

Food Groups	Production (+)	Exports (-)	Imports (+)	Seed, Feed, Other Uses (-)	Consumption (=)
Cereals	20 165	66	3 657	6 519	17 237
Veg.oils	1 805	14	167	337	1 621
Sugar&Sw.	53	8	1 134	0	1 179
Roots&Tub.	66 497	4	1	40 100	26 394
Meat	991	-	8	0	999
Milk	424	5	517	103	833

Time reference= ⁹⁹⁻⁰¹:1999-2001, ⁰⁰:2000, ⁰²:2002, ⁰⁰⁻⁰²:2000-2002, ⁰³:2003, ⁰⁴:2004, ^{ly}:Latest Available Year