



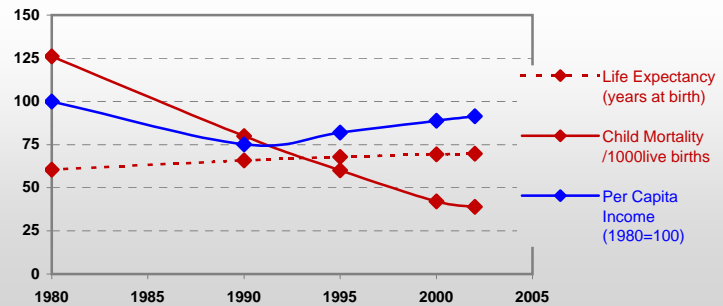
Country profiles

Peru



General / Welfare

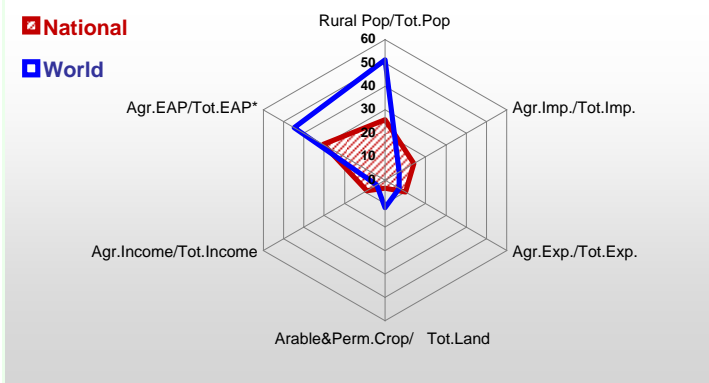
Population ^{04 *}	27 567
Per Capita Income ^{02 **}	2 380
Per Capita Agricultural Income ^{02**}	744
Total Exports ^{02 ****}	7 669
Total Imports ^{02 ****}	7 423
Agric. External Assistance ^{99-01 ***}	371 565
Food Consumption Inequality (G) ^{ly}	0,15
Income Inequality (G) ^{ly}	0,50
Land Inequality (G) ^{ly}	0,86
Undernourished Population % ⁰⁰⁻⁰²	13



* 1000 ** \$ *** 1000 \$ **** Million \$ --- (G): Gini Coefficient --- Income refers to GDP at 1995 Constant Prices

Agriculture In The Economy^{ly}

Resources

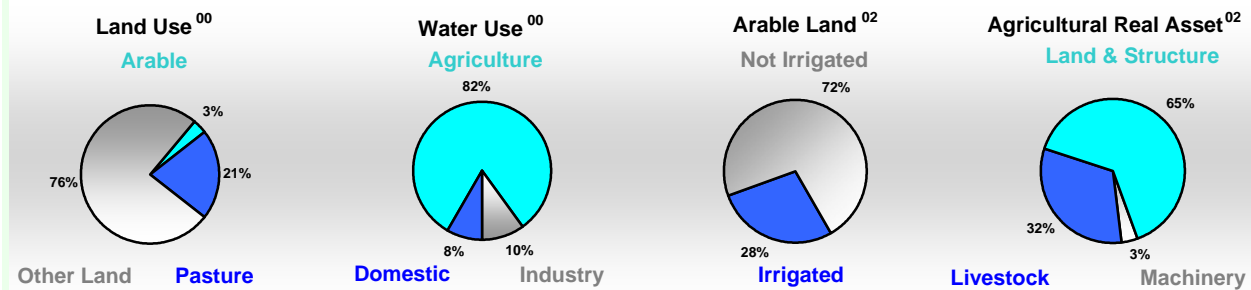


Arable Land ^{00 *}	3 700
Permanent Crops ^{00 *}	585
Pasture ^{00 *}	27 100
Cattle & Buffaloes ^{03 **}	4 990
Sheep & Goats ^{03 **}	16 050
Tractors ^{02 *}	4
Harvesters&Threshers ^{02 *}	-
Fertilizers Production ^{02 ***}	2 538
Fertilizers Consumption ^{02 ***}	274 007
Rainfall Index ^{02 (mm)}	1 988

* EAP: Economically Active Population

* 1000ha ** 1000heads *** Tonnes N,P₂O₅,K₂O

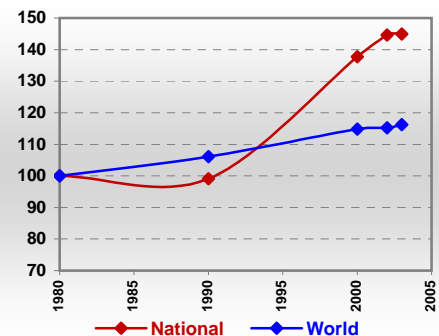
Resources Distribution



Production

Agriculture^{03 *}		
Cereals	3 925	Pulpwd.,Rnd&Split **
Meat	940	Roundwood **
Fruits & Vegetables	5 545	Log:Saw&Veneer **
Roots & Tubers	4 611	Sawnwood **
Pulses	169	Wood Charcoal *
Oilseeds & Nuts	70	Woodfuel **
Sugar Crops	9 550	Wood Pulp *
Tobacco	12	Wood-based Panels **
Fibre Crops	52	
Forestry⁰²		Fisheries^{02 *}
Indust.Roundwood **	1 084	Pelagic
Paper, Paperboard *	63	Freshwater
		Demersal
		Molluscs

Per Capita Agricultural Production Index



* 1000Tonnes ** 1000m³

Time reference= ⁹⁹⁻⁰¹:1999-2001, ⁰⁰:2000, ⁰²:2002, ⁰⁰⁻⁰²:2000-2002, ⁰³:2003, ⁰⁴:2004, ^{ly}:Latest Available Year



Country profiles

Peru

Trade ⁰²

Agricultural Imports *	1 055
% 4 Major Imports in Agr.Imp	40
% Agr. Imports in Tot. Imports	14
Fishery Imports *	24
Forestry Imports *	217
Agricultural Exports *	773
% 4 Major Exports in Agr.Exp.	29
% Agr. Exports in Tot.Exports	10
Fishery Exports *	1 067
Forestry Exports *	103



Trade Partners & Products

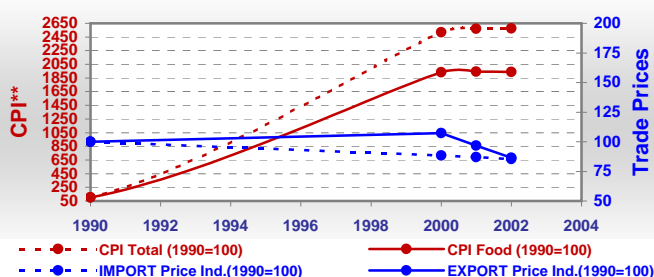
Major Import Partner	Argentina	USA	Chile
Major Export Partner	China	USA	Japan
Major Imports	Wheat	Cake Soybean	Maize
Major Exports	Fish Meal	Coffee,Green	Vegs Pr nes

* Million \$

Prices

Producer Prices ⁰⁰⁻⁰²	\$*	\$ Green *
Wheat	196	211
Rice	166	179
Maize	219	236
Soybean	322	347
Coffee	717	770
Tobacco	1 048	1 126
Cow Milk	267	287
Cattle (Live Weight)	976	1 050
Pig (Live Weight)	957	1 029
Chicken (Live Weight)	1 008	1 084

Consumer and Agricultural Trade Price Indices

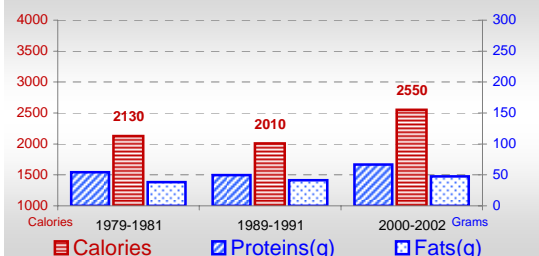


* per Tonne

** CPI : Consumer Price Index

Consumption

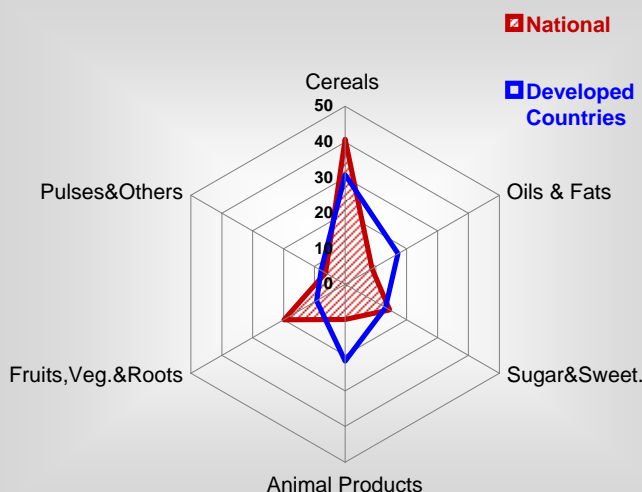
Per Capita Daily Consumption



Per Capita Daily Calorie Intake From Selected Food Items ⁰⁰⁻⁰²

Rice	487
Wheat	365
Maize	131
Sorghum	-
Potatoes	186
Cassava	111
Sugar	353
Soybean Oil	90
Palm Oil	26
Milk	82
Anim.Fats(Raw&Butter)	15
Eggs	15
Pig Meat	17
Poultry Meat	58
Bovine Meat	13
Sheep & Goats Meat	5

Source of Dietary Energy Consumption % ⁰⁰⁻⁰²



Food Balance ⁰⁰⁻⁰² (1000Tonnes)

Food Groups	Production (+)	Exports (-)	Imports (+)	Seed, Feed, Other Uses (-)	Consumption (=)
Cereals	3 046	53	2 470	2 246	3 217
Veg.oils	65	13	210	110	152
Sugar&Sw.	851	48	190	-1	994
Roots&Tub.	4 551	3	75	1 694	2 929
Meat	864	-	15	313	566
Milk	1 145	16	232	35	1 326

Time reference= ⁹⁹⁻⁰¹:1999-2001, ⁰⁰:2000, ⁰²:2002, ⁰⁰⁻⁰²:2000-2002, ⁰³:2003, ⁰⁴:2004, ^{ly}:Latest Available Year