



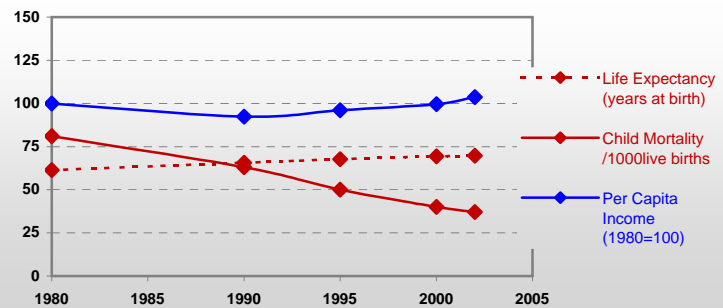
Country profiles

Philippines



General / Welfare

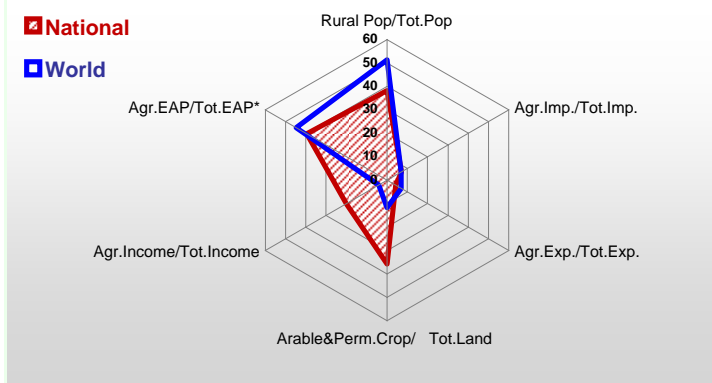
Population ^{04 *}	81 408
Per Capita Income ^{02 **}	1 209
Per Capita Agricultural Income ^{02**}	638
Total Exports ^{02 ****}	36 502
Total Imports ^{02 ****}	37 180
Agric. External Assistance ^{99-01 ***}	1 414 836
Food Consumption Inequality (G) ^{ly}	0,17
Income Inequality (G) ^{ly}	0,46
Land Inequality (G) ^{ly}	0,55
Undernourished Population % ⁰⁰⁻⁰²	22



*1000 ** \$ *** 1000 \$ **** Million \$ --- (G) : Gini Coefficient --- Income refers to GDP at 1995 Constant Prices

Agriculture In The Economy^{ly}

Resources

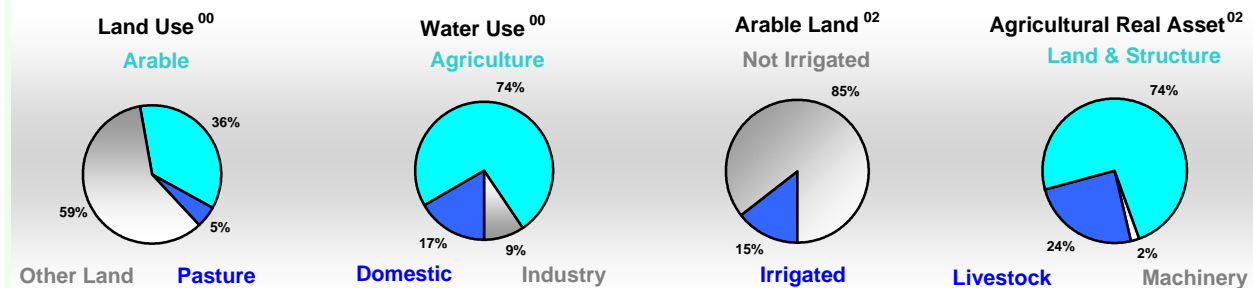


Arable Land ^{00 *}	5 650
Permanent Crops ^{00 *}	5 000
Pasture ^{00 *}	1 500
Cattle & Buffaloes ^{03 **}	5 737
Sheep & Goats ^{03 **}	6 330
Tractors ^{02 *}	2
Harvesters&Threshers ^{02 *}	0
Fertilizers Production ^{02 ***}	393 150
Fertilizers Consumption ^{02 ***}	723 020
Rainfall Index ^{02 (mm)}	2 199

* EAP : Economically Active Population

* 1000ha ** 1000heads *** Tonnes N,P₂O₅,K₂O

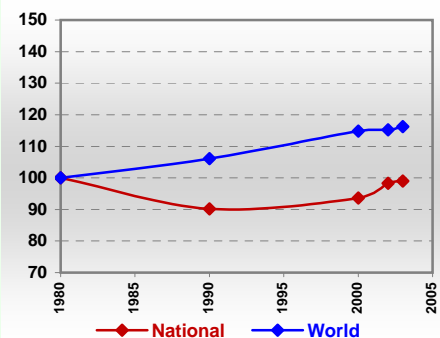
Resources Distribution



Production

Agriculture^{03 *}			
Cereals	18 509	Pulpwd.,Rnd&Split ^{**}	106
Meat	2 348	Roundwood ^{**}	16 017
Fruits & Vegetables	16 840	Log:Saw&Veneer ^{**}	288
Roots & Tubers	2 188	Sawnwood ^{**}	154
Pulses	56	Wood Charcoal [*]	43
Oilseeds & Nuts	1 879	Woodfuel ^{**}	13 328
Sugar Crops	25 865	Wood Pulp [*]	175
Tobacco	51	Wood-based Panels ^{**}	620
Fibre Crops	80	Fisheries^{02 *}	
		Pelagic	1 403
Forestry⁰²		Freshwater	449
Indust.Roundwood ^{**}	2 689	Demersal	342
Paper, Paperboard [*]	1 056	Molluscs	77

Per Capita Agricultural Production Index



* 1000Tonnes ** 1000m³

Time reference= ⁹⁹⁻⁰¹ :1999-2001, ⁰⁰ :2000, ⁰² :2002, ⁰⁰⁻⁰² :2000-2002, ⁰³ :2003, ⁰⁴ :2004, ^{ly} :Latest Available Year

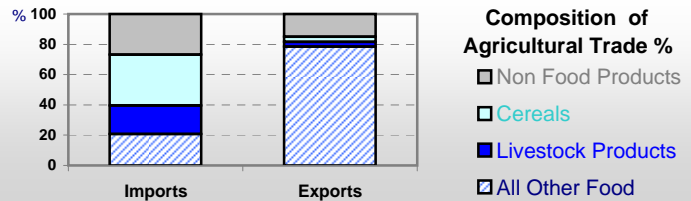


Country profiles

Philippines

Trade ⁰²

Agricultural Imports *	2 644
% 4 Major Imports in Agr.Imp	28
% Agr. Imports in Tot. Imports	7
Fishery Imports *	90
Forestry Imports *	566
Agricultural Exports *	1 509
% 4 Major Exports in Agr.Exp.	53
% Agr. Exports in Tot.Exports	4
Fishery Exports *	415
Forestry Exports *	80



Trade Partners & Products

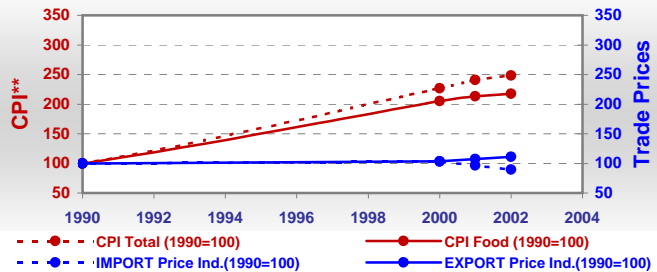
Major Import Partner	USA	Australia	India
Major Export Partner	USA	Japan	Netherlands
Major Imports	Wheat	Cake Soybean	Mil Rice
Major Exports	Oil Coconuts	Bananas	Coconuts,des

* Million \$

Prices

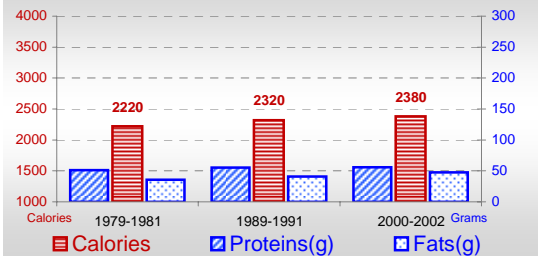
Producer Prices ⁰⁰⁻⁰²	\$*	\$ Green *
Wheat	-	-
Rice	171	188
Maize	132	144
Soybean	276	302
Coffee	794	874
Tobacco	1 128	1 256
Cow Milk	291	319
Cattle (Live Weight)	1 028	1 126
Pig (Live Weight)	1 061	1 161
Chicken (Live Weight)	1 250	1 369

Consumer and Agricultural Trade Price Indices

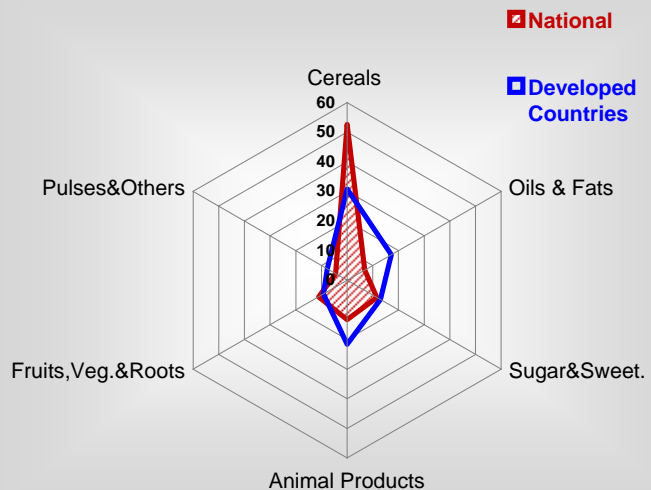


Consumption

Per Capita Daily Consumption



Source of Dietary Energy Consumption % ⁰⁰⁻⁰²



Per Capita Daily Calorie Intake From Selected Food Items ⁰⁰⁻⁰²

Rice	1004
Wheat	212
Maize	30
Sorghum	-
Potatoes	3
Cassava	58
Sugar	253
Soybean Oil	18
Palm Oil	32
Milk	23
Anim.Fats(Raw&Butter)	44
Eggs	26
Pig Meat	147
Poultry Meat	28
Bovine Meat	18
Sheep & Goats Meat	2

Food Balance ^{00-02 (1000Tonnes)}

Food Groups	Production (+)	Exports (-)	Imports (+)	Seed, Feed, Other Uses (-)	Consumption (=)
Cereals	13 037	22	4 461	6 935	10 541
Veg.oils	1 589	1 174	97	131	381
Sugar&Sw.	1 961	108	281	-56	2 190
Roots&Tub.	2 488	5	239	324	2 397
Meat	2 046	1	154	-1	2 200
Milk	11	113	1 677	49	1 526

Time reference= ⁹⁹⁻⁰¹:1999-2001, ⁰⁰:2000, ⁰²:2002, ⁰⁰⁻⁰²:2000-2002, ⁰³:2003, ⁰⁴:2004, ^{ly}:Latest Available Year