



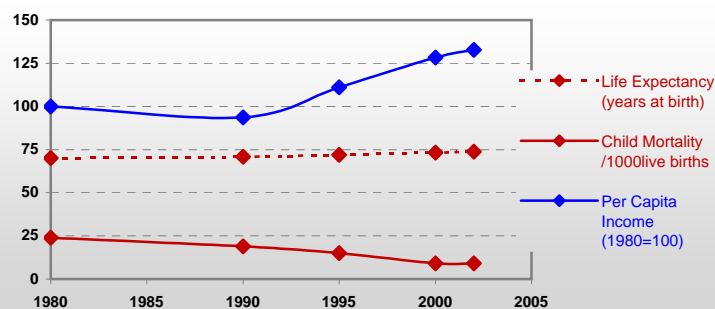
Country profiles

Poland



General / Welfare

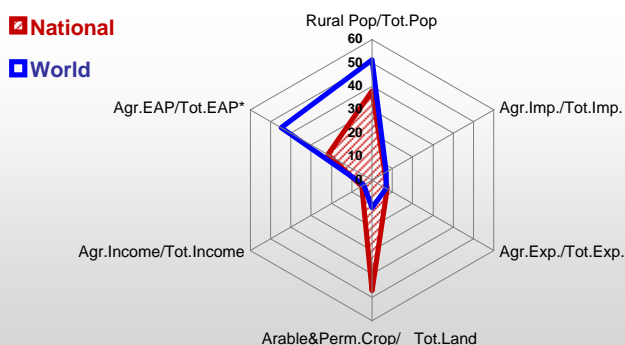
Population ^{04 *}	38 551
Per Capita Income ^{02 **}	3 769
Per Capita Agricultural Income ^{02**}	1 063
Total Exports ^{02 ****}	41 010
Total Imports ^{02 ****}	55 113
Agric. External Assistance ^{99-01 ***}	130 570
Food Consumption Inequality (G) ^{ly}	0,12
Income Inequality (G) ^{ly}	0,32
Land Inequality (G) ^{ly}	0,69
Undernourished Population % ⁰⁰⁻⁰²	< 2.5



*1000 ** \$ *** 1000 \$ **** Million \$ --- (G) : Gini Coefficient --- Income refers to GDP at 1995 Constant Prices

Agriculture In The Economy^{ly}

Resources

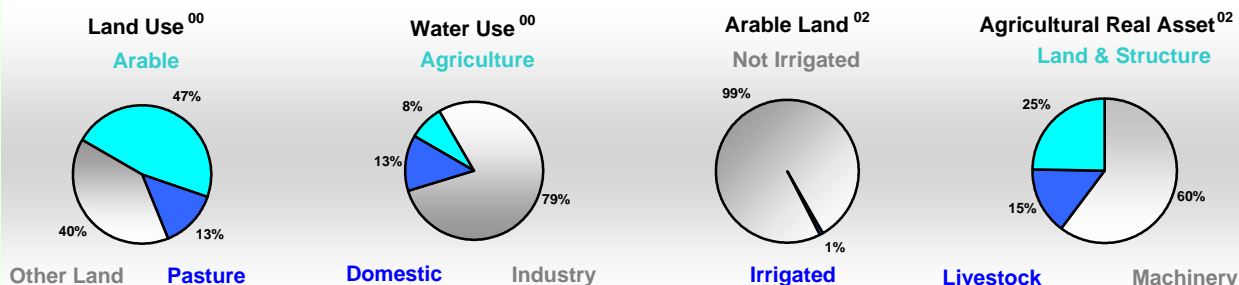


Arable Land ^{00 *}	13 993
Permanent Crops ^{00 *}	337
Pasture ^{00 *}	4 083
Cattle & Buffaloes ^{03 **}	5 489
Sheep & Goats ^{03 **}	338
Tractors ^{02 *}	98
Harvesters&Threshers ^{02 *}	9
Fertilizers Production ^{02 ***}	1 617 852
Fertilizers Consumption ^{02 ***}	1 511 699
Rainfall Index ^{02 (mm)}	587

* EAP : Economically Active Population

* 1000ha ** 1000heads *** Tonnes N,P₂O₅,K₂O

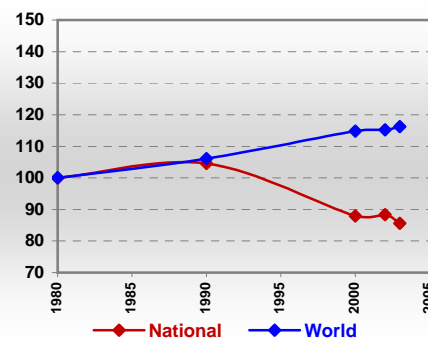
Resources Distribution



Production

Agriculture^{03 *}		Pulpwd.,Rnd&Split ^{**}	12 600
Cereals	23 391	Roundwood ^{**}	27 170
Meat	3 315	Log:Saw&Veneer ^{**}	10 716
Fruits & Vegetables	8 184	Sawnwood ^{**}	2 910
Roots & Tubers	13 732	Wood Charcoal [*]	35
Pulses	275	Woodfuel ^{**}	2 130
Oilseeds & Nuts	308	Wood Pulp [*]	1 013
Sugar Crops	11 740	Wood-based Panels ^{**}	5 197
Tobacco	22	Fisheries^{02 *}	
Fibre Crops	10	Pelagic	149
Forestry⁰²		Freshwater	56
Indust.Roundwood ^{**}	25 040	Demersal	29
Paper, Paperboard [*]	2 230	Molluscs	-

Per Capita Agricultural Production Index



* 1000Tonnes ** 1000m³

Time reference= ⁹⁹⁻⁰¹:1999-2001, ⁰⁰:2000, ⁰²:2002, ⁰⁰⁻⁰²:2000-2002, ⁰³:2003, ⁰⁴:2004, ^{ly}:Latest Available Year

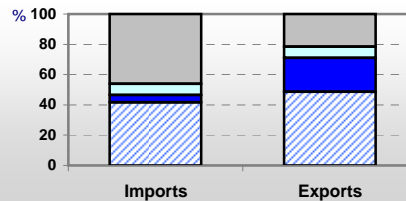


Country profiles

Poland

Trade ⁰²

Agricultural Imports *	3 470
% 4 Major Imports in Agr.Imp	12
% Agr. Imports in Tot. Imports	6
Fishery Imports *	335
Forestry Imports *	1 571
Agricultural Exports *	3 014
% 4 Major Exports in Agr.Exp.	14
% Agr. Exports in Tot.Exports	7
Fishery Exports *	253
Forestry Exports *	1 301



Composition of Agricultural Trade %

- Non Food Products
- Cereals
- Livestock Products
- All Other Food

Trade Partners & Products

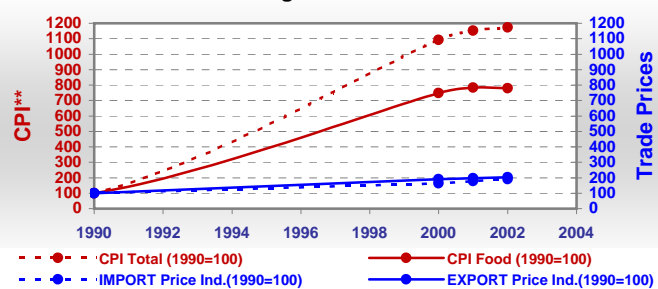
Major Import Partner	Germany	Netherlands	Spain
Major Export Partner	Germany	Russian Fed	Netherlands
Major Imports	Cake Soybean	Food Prep	Tobacco
Major Exports	Fruit Pr nes	Food Prep	Choc Prod Ns

* Million \$

Prices

Producer Prices ⁰⁰⁻⁰²	\$*	\$ Green *
Wheat	119	165
Rice	-	-
Maize	94	130
Soybean	-	-
Coffee	-	-
Tobacco	1 184	1 638
Cow Milk	187	258
Cattle (Live Weight)	677	937
Pig (Live Weight)	981	1 354
Chicken (Live Weight)	706	978

Consumer and Agricultural Trade Price Indices

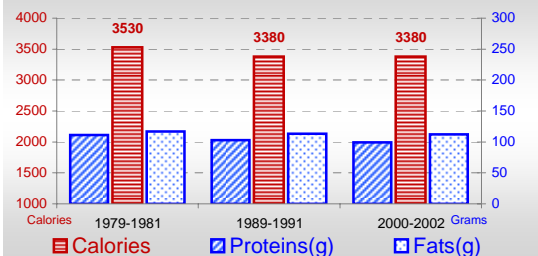


* per Tonne

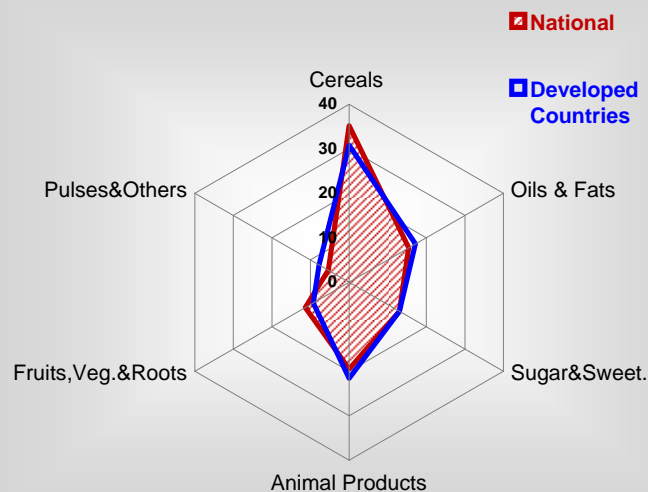
** CPI : Consumer Price Index

Consumption

Per Capita Daily Consumption



Source of Dietary Energy Consumption % ⁰⁰⁻⁰²



Per Capita Daily Calorie Intake From Selected Food Items ⁰⁰⁻⁰²

Rice	19
Wheat	856
Maize	-
Sorghum	-
Potatoes	241
Cassava	-
Sugar	434
Soybean Oil	75
Palm Oil	34
Milk	219
Anim.Fats(Raw&Butter)	201
Eggs	43
Pig Meat	265
Poultry Meat	59
Bovine Meat	24
Sheep & Goats Meat	-

Food Balance ⁰⁰⁻⁰² (1000Tonnes)

Food Groups	Production (+)	Exports (-)	Imports (+)	Seed, Feed, Other Uses (-)	Consumption (=)
Cereals	25 393	303	1 564	20 696	5 958
Veg.oils	371	49	354	200	476
Sugar&Sw.	2 135	369	117	134	1 749
Roots&Tub.	19 712	541	106	14 184	5 093
Meat	3 005	204	61	107	2 755
Milk	11 883	1 959	858	3 902	6 880

Time reference= ⁹⁹⁻⁰¹:1999-2001, ⁰⁰:2000, ⁰²:2002, ⁰⁰⁻⁰²:2000-2002, ⁰³:2003, ⁰⁴:2004, ^{ly}:Latest Available Year