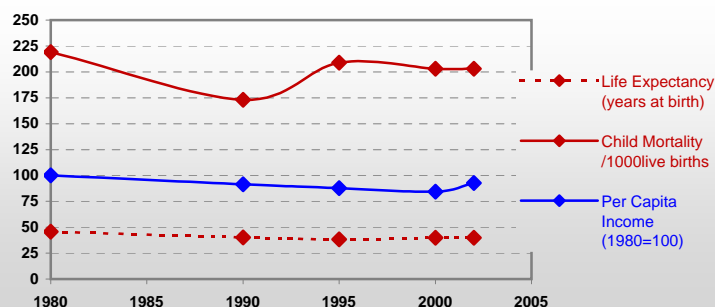


## Rwanda



### General / Welfare

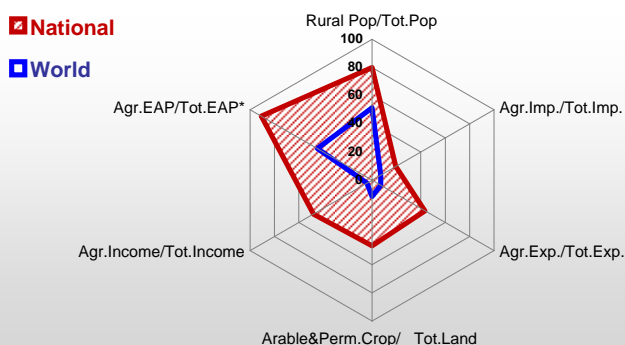
Population <sup>04 *</sup>	8 481
Per Capita Income <sup>02 **</sup>	295
Per Capita Agricultural Income <sup>02**</sup>	154
Total Exports <sup>02 ****</sup>	65
Total Imports <sup>02 ****</sup>	246
Agric. External Assistance <sup>99-01 ***</sup>	175 076
Food Consumption Inequality (G) <sup>ly</sup>	0,18
Income Inequality (G) <sup>ly</sup>	0,29
Land Inequality (G) <sup>ly</sup>	-
Undernourished Population % <sup>00-02</sup>	37



\* 1000 \*\* \$ \*\*\* 1000 \$ \*\*\*\* Million \$ --- (G) : Gini Coefficient --- Income refers to GDP at 1995 Constant Prices

### Agriculture In The Economy<sup>ly</sup>

### Resources

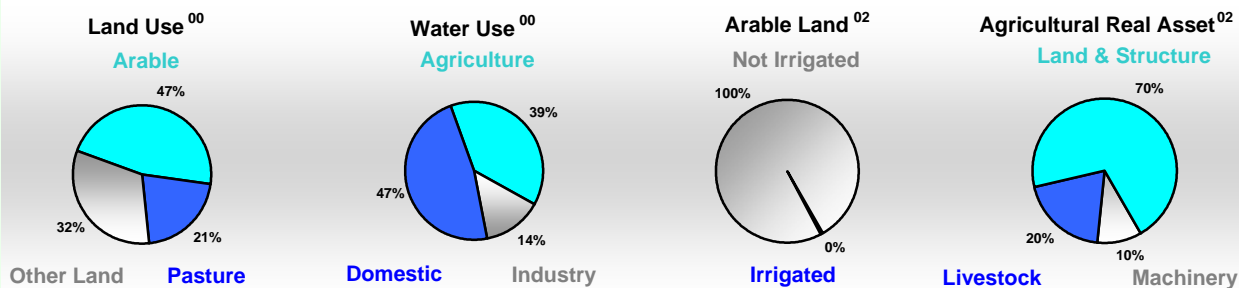


Arable Land <sup>00 *</sup>	900
Permanent Crops <sup>00 *</sup>	250
Pasture <sup>00 *</sup>	520
Cattle & Buffaloes <sup>03 **</sup>	815
Sheep & Goats <sup>03 **</sup>	1 020
Tractors <sup>02 *</sup>	0
Harvesters&Threshers <sup>02 *</sup>	-
Fertilizers Production <sup>02 ***</sup>	-
Fertilizers Consumption <sup>02 ***</sup>	15 299
Rainfall Index <sup>02 (mm)</sup>	1 115

\* EAP : Economically Active Population

\* 1000ha \*\* 1000heads \*\*\* Tonnes N,P<sub>2</sub>O<sub>5</sub>,K<sub>2</sub>O

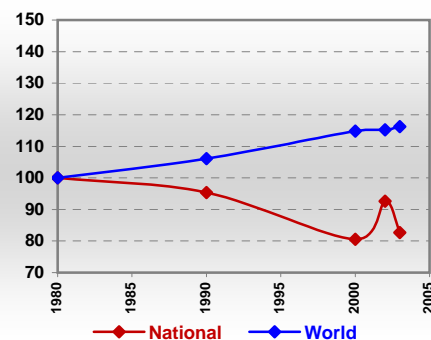
### Resources Distribution



### Production

Agriculture <sup>03 *</sup>		Forestry <sup>02</sup>		Fisheries <sup>02 *</sup>	
Cereals	298	Indust.Roundwood <sup>**</sup>	336	Pulpwd.,Rnd&Split <sup>**</sup>	-
Meat	36	Paper, Paperboard <sup>*</sup>	-	Roundwood <sup>**</sup>	7 836
Fruits & Vegetables	2 750			Log:Saw&Veneer <sup>**</sup>	86
Roots & Tubers	3 114			Sawnwood <sup>**</sup>	79
Pulses	257			Wood Charcoal <sup>*</sup>	48
Oilseeds & Nuts	7			Woodfuel <sup>**</sup>	7 500
Sugar Crops	40			Wood Pulp <sup>*</sup>	-
Tobacco	4			Wood-based Panels <sup>**</sup>	-
Fibre Crops	-				
				Pelagic	-
				Freshwater	8
				Demersal	-
				Molluscs	-

### Per Capita Agricultural Production Index



\* 1000Tonnes \*\* 1000m<sup>3</sup>

Time reference= <sup>99-01</sup>:1999-2001, <sup>00</sup>:2000, <sup>02</sup>:2002, <sup>00-02</sup>:2000-2002, <sup>03</sup>:2003, <sup>04</sup>:2004, <sup>ly</sup>:Latest Available Year

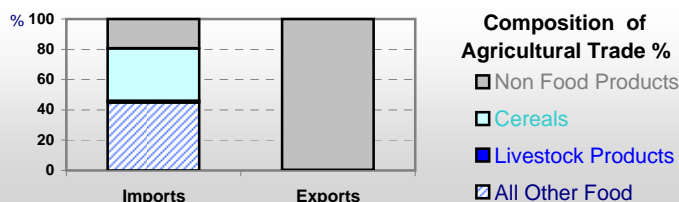


# Country profiles

## Rwanda

### Trade <sup>02</sup>

Agricultural Imports *	38
% 4 Major Imports in Agr.Imp	12
% Agr. Imports in Tot. Imports	19
Fishery Imports *	0
Forestry Imports *	2
Agricultural Exports *	28
% 4 Major Exports in Agr.Exp.	92
% Agr. Exports in Tot.Exports	43
Fishery Exports *	-
Forestry Exports *	0



### Trade Partners & Products

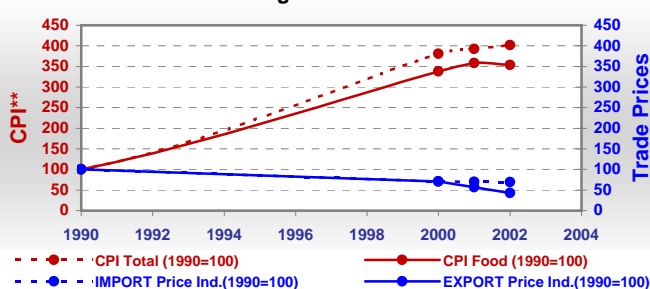
<b>Major Import Partner</b>	Kenya	Tanzania	Belgium
<b>Major Export Partner</b>	Kenya	Switzerland	Unspecified
<b>Major Imports</b>	Sugar,C. Raw	Peas, Dry	Mil Rice
<b>Major Exports</b>	Coffee,Green	Tea	Skin D Sheep

\* Million \$

### Prices

Producer Prices <sup>00-02</sup>	\$*	\$ Green *
Wheat	293	363
Rice	533	665
Maize	171	211
Soybean	340	422
Coffee	443	544
Tobacco	487	606
Cow Milk	523	650
Cattle (Live Weight)	621	778
Pig (Live Weight)	562	699
Chicken (Live Weight)	1 440	1 791

### Consumer and Agricultural Trade Price Indices

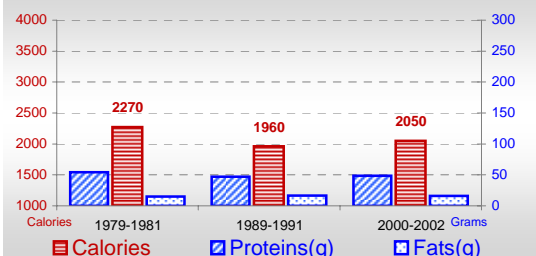


\* per Tonne

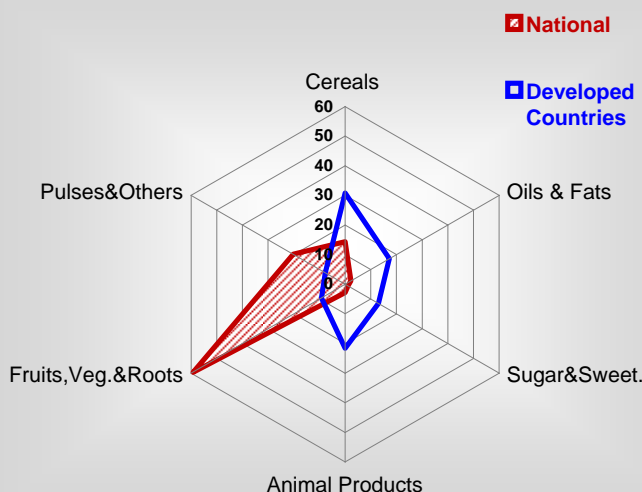
\*\* CPI : Consumer Price Index

### Consumption

#### Per Capita Daily Consumption



#### Source of Dietary Energy Consumption % <sup>00-02</sup>



#### Per Capita Daily Calorie Intake From Selected Food Items <sup>00-02</sup>

Rice	27
Wheat	19
Maize	96
Sorghum	147
Potatoes	202
Cassava	265
Sugar	23
Soybean Oil	4
Palm Oil	29
Milk	33
Anim.Fats(Raw&Butter)	4
Eggs	1
Pig Meat	3
Poultry Meat	1
Bovine Meat	12
Sheep & Goats Meat	2

### Food Balance <sup>00-02 (1000Tonnes)</sup>

Food Groups	Production (+)	Exports (-)	Imports (+)	Seed, Feed, Other Uses (-)	Consumption (=)
Cereals	275	-	58	66	267
Veg.oils	1	-	13	0	14
Sugar&Sw.	6	-	13	0	19
Roots&Tub.	3 157	0	0	385	2 771
Meat	35	-	-	0	35
Milk	153	-	7	8	152

Time reference= <sup>99-01</sup>:1999-2001, <sup>00</sup>:2000, <sup>02</sup>:2002, <sup>00-02</sup>:2000-2002, <sup>03</sup>:2003, <sup>04</sup>:2004, <sup>ly</sup>:Latest Available Year