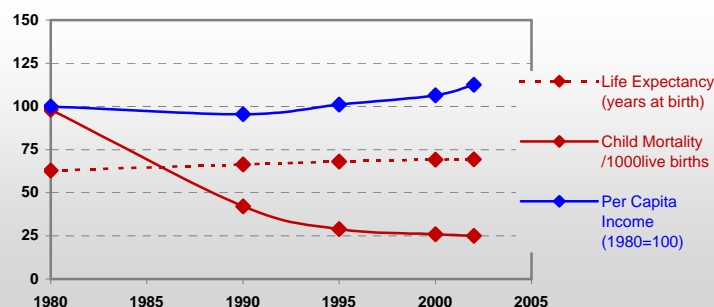


## Samoa



### General / Welfare

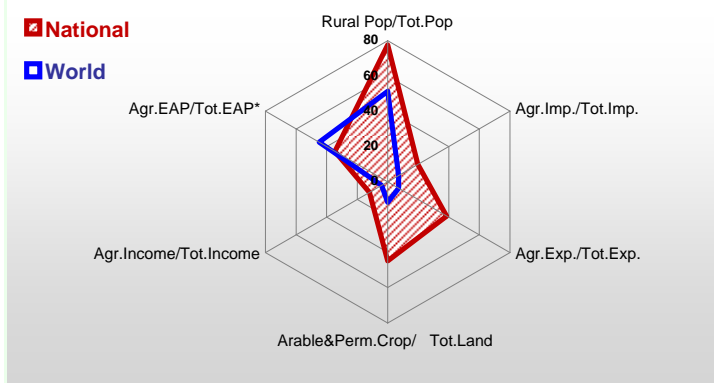
|   |       |
|---|-------|
| Population <sup>04 *</sup>                      | 180   |
| Per Capita Income <sup>02 **</sup>              | 1 502 |
| Per Capita Agricultural Income <sup>02**</sup>  | 552   |
| Total Exports <sup>02 ****</sup>                | 14    |
| Total Imports <sup>02 ****</sup>                | 135   |
| Agric. External Assistance <sup>99-01 ***</sup> | 9 343 |
| Food Consumption Inequality (G) <sup>ly</sup>   | 0,13  |
| Income Inequality (G) <sup>ly</sup>             | -     |
| Land Inequality (G) <sup>ly</sup>               | 0,57  |
| Undernourished Population % <sup>00-02</sup>    | -     |



\* 1000 \*\* \$ \*\*\*\* Million \$ --- (G) : Gini Coefficient --- Income refers to GDP at 1995 Constant Prices

### Agriculture In The Economy<sup>ly</sup>

### Resources

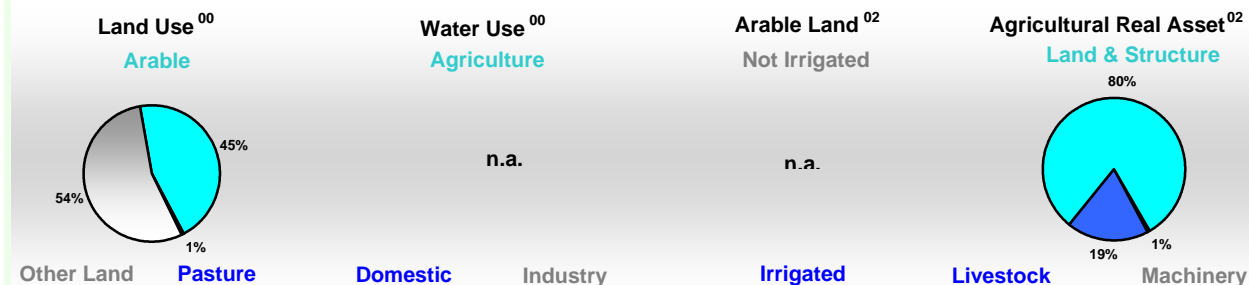


|   |       |
|---|-------|
| Arable Land <sup>00 *</sup>               | 59    |
| Permanent Crops <sup>00 *</sup>           | 68    |
| Pasture <sup>00 *</sup>                   | 2     |
| Cattle & Buffaloes <sup>03 **</sup>       | 29    |
| Sheep & Goats <sup>03 **</sup>            | -     |
| Tractors <sup>02 *</sup>                  | 2     |
| Harvesters&Threshers <sup>02 *</sup>      | -     |
| Fertilizers Production <sup>02 ***</sup>  | -     |
| Fertilizers Consumption <sup>02 ***</sup> | 3 500 |
| Rainfall Index <sup>02 (mm)</sup>         | -     |

\* EAP : Economically Active Population ---

\* 1000ha \*\* 1000heads \*\*\* Tonnes N,P<sub>2</sub>O<sub>5</sub>,K<sub>2</sub>O

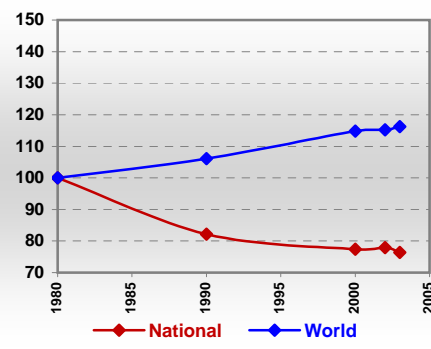
### Resources Distribution



### Production

| Agriculture <sup>03 *</sup> |    | Forestry <sup>02</sup> |    | Fisheries <sup>02 *</sup> |     |
|-----------------------------|----|------------------------|----|---------------------------|-----|
| Cereals                     | -  | Indust.Roundwood **    | 61 | Pulpwd.,Rnd&Split **      | -   |
| Meat                        | 5  | Paper, Paperboard *    | -  | Roundwood **              | 131 |
| Fruits & Vegetables         | 45 |                        |    | Log:Saw&Veneer **         | 58  |
| Roots & Tubers              | 23 |                        |    | Sawnwood **               | 21  |
| Pulses                      | -  |                        |    | Wood Charcoal *           | -   |
| Oilseeds & Nuts             | 18 |                        |    | Woodfuel **               | 70  |
| Sugar Crops                 | 0  |                        |    | Wood Pulp *               | -   |
| Tobacco                     | 0  |                        |    | Wood-based Panels **      | -   |
| Fibre Crops                 | 1  |                        |    |                           | -   |
|                             |    |                        |    | Pelagic                   | 5   |
|                             |    |                        |    | Freshwater                | 0   |
|                             |    |                        |    | Demersal                  | 0   |
|                             |    |                        |    | Molluscs                  | 2   |

### Per Capita Agricultural Production Index



\* 1000Tonnes \*\* 1000m<sup>3</sup>

Time reference= <sup>99-01</sup> :1999-2001, <sup>00</sup> :2000, <sup>02</sup> :2002, <sup>00-02</sup> :2000-2002, <sup>03</sup> :2003, <sup>04</sup> :2004, <sup>ly</sup> :Latest Available Year

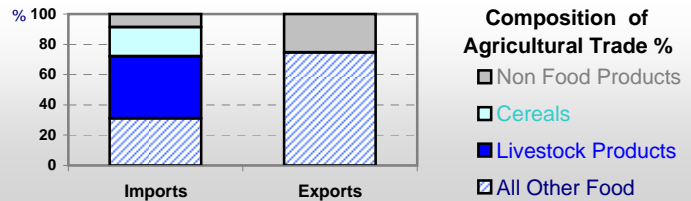


# Country profiles

## Samoa

### Trade <sup>02</sup>

|                                |    |
|--------------------------------|----|
| Agricultural Imports *         | 26 |
| % 4 Major Imports in Agr.Imp   | 24 |
| % Agr. Imports in Tot. Imports | 20 |
| Fishery Imports *              | 4  |
| Forestry Imports *             | 1  |
| Agricultural Exports *         | 5  |
| % 4 Major Exports in Agr.Exp.  | 33 |
| % Agr. Exports in Tot.Exports  | 39 |
| Fishery Exports *              | 13 |
| Forestry Exports *             | 1  |



### Trade Partners & Products

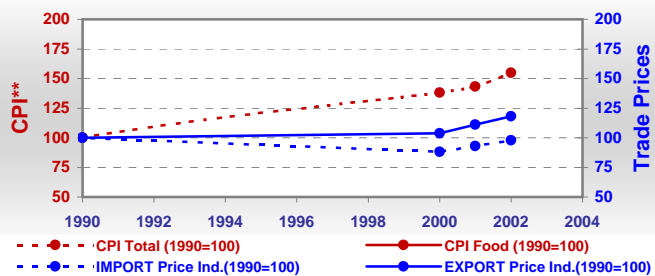
|                      |             |              |              |
|----------------------|-------------|--------------|--------------|
| Major Import Partner |             |              |              |
| Major Export Partner |             |              |              |
| Major Imports        | Mutton Lamb | Chicken Meat | Food Prep    |
| Major Exports        | Beer Barley | Fish Meal    | Fruit Pr nes |

\* Million \$

### Prices

| Producer Prices <sup>00-02</sup> | \$* | \$ Green * |
|----------------------------------|-----|------------|
| Wheat                            | -   | -          |
| Rice                             | -   | -          |
| Maize                            | -   | -          |
| Soybean                          | -   | -          |
| Coffee                           | -   | -          |
| Tobacco                          | -   | -          |
| Cow Milk                         | -   | -          |
| Cattle (Live Weight)             | -   | -          |
| Pig (Live Weight)                | -   | -          |
| Chicken (Live Weight)            | -   | -          |

### Consumer and Agricultural Trade Price Indices

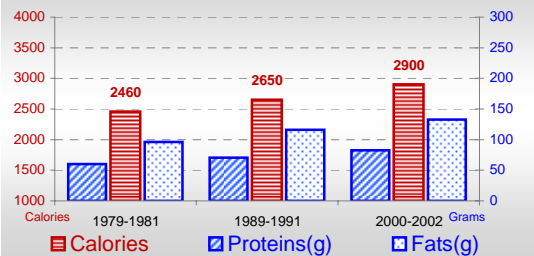


\* per Tonne

\*\* CPI : Consumer Price Index

### Consumption

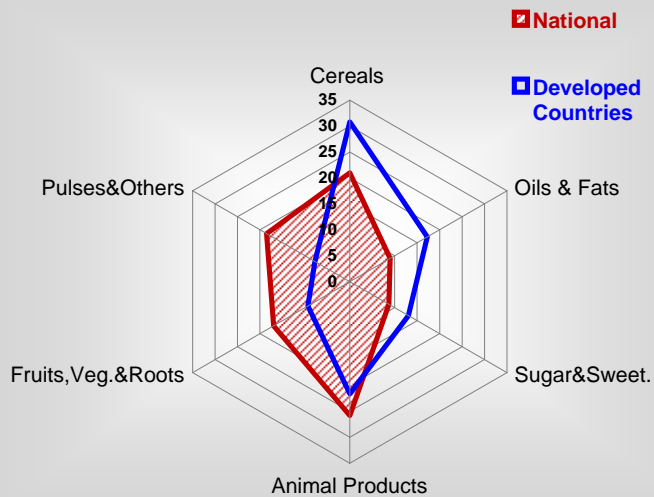
#### Per Capita Daily Consumption



#### Per Capita Daily Calorie Intake From Selected Food Items <sup>00-02</sup>

|                       |     |
|-----------------------|-----|
| Rice                  | 241 |
| Wheat                 | 368 |
| Maize                 | -   |
| Sorghum               | -   |
| Potatoes              | 8   |
| Cassava               | 5   |
| Sugar                 | 235 |
| Soybean Oil           | -   |
| Palm Oil              | 25  |
| Milk                  | 46  |
| Anim.Fats(Raw&Butter) | 135 |
| Eggs                  | 6   |
| Pig Meat              | 207 |
| Poultry Meat          | 86  |
| Bovine Meat           | 62  |
| Sheep & Goats Meat    | 162 |

#### Source of Dietary Energy Consumption % <sup>00-02</sup>



#### Food Balance <sup>00-02</sup> (1000Tonnes)

| Food Groups | Production (+) | Exports (-) | Imports (+) | Seed, Feed, Other Uses (-) | Consumption (=) |
|-------------|----------------|-------------|-------------|----------------------------|-----------------|
| Cereals     | -              | -           | 17          | 4                          | 13              |
| Veg.oils    | 5              | 1           | -           | 3                          | 1               |
| Sugar&Sw.   | -              | -           | 8           | 3                          | 5               |
| Roots&Tub.  | -              | -           | -           | 0                          | -               |
| Meat        | 5              | -           | 10          | 1                          | 14              |
| Milk        | 2              | -           | 3           | 1                          | 4               |

Time reference= <sup>99-01</sup>:1999-2001, <sup>00</sup>:2000, <sup>02</sup>:2002, <sup>00-02</sup>:2000-2002, <sup>03</sup>:2003, <sup>04</sup>:2004, <sup>ly</sup>:Latest Available Year