



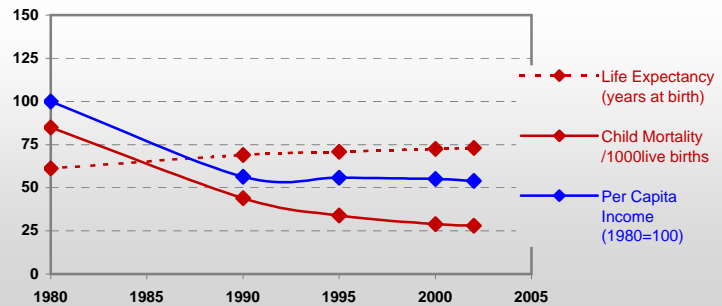
# Country profiles

## Saudi Arabia



### General / Welfare

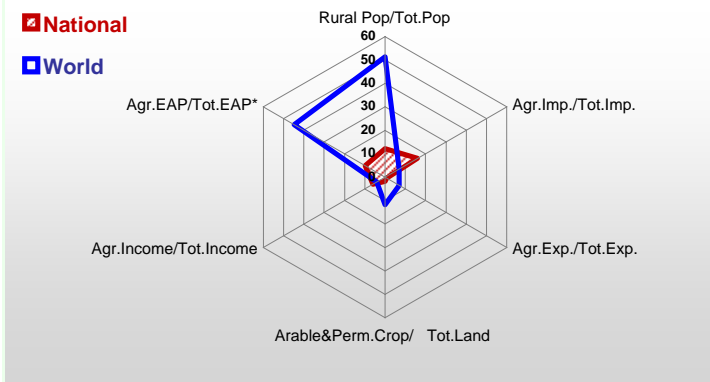
Population <sup>04 *</sup>	24 919
Per Capita Income <sup>02 **</sup>	7 562
Per Capita Agricultural Income <sup>02**</sup>	4 733
Total Exports <sup>02 ****</sup>	72 560
Total Imports <sup>02 ****</sup>	32 333
Agric. External Assistance <sup>99-01 ***</sup>	33
Food Consumption Inequality (G) <sup>ly</sup>	0,12
Income Inequality (G) <sup>ly</sup>	-
Land Inequality (G) <sup>ly</sup>	-
Undernourished Population % <sup>00-02</sup>	3



\*1000 \*\* \$ \*\*\* 1000 \$ \*\*\*\* Million \$ --- (G): Gini Coefficient --- Income refers to GDP at 1995 Constant Prices

### Agriculture In The Economy<sup>ly</sup>

### Resources

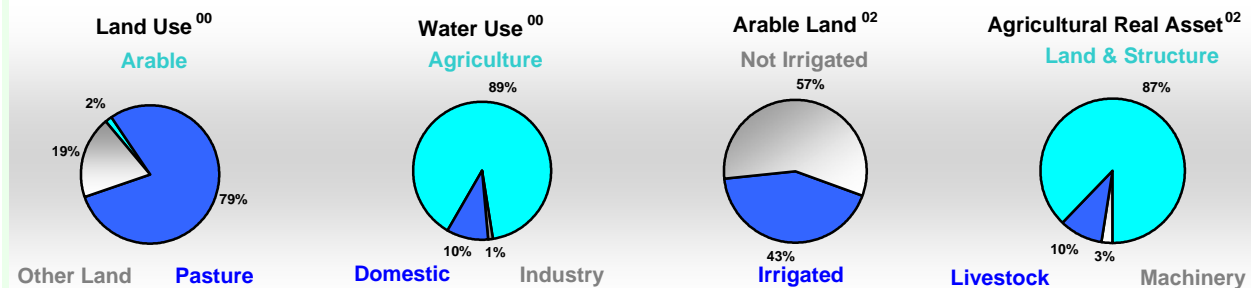


Arable Land <sup>00 *</sup>	3 592
Permanent Crops <sup>00 *</sup>	193
Pasture <sup>00 *</sup>	170 000
Cattle & Buffaloes <sup>03 **</sup>	340
Sheep & Goats <sup>03 **</sup>	10 990
Tractors <sup>02 *</sup>	3
Harvesters&Threshers <sup>02 *</sup>	1
Fertilizers Production <sup>02 ***</sup>	1 442 400
Fertilizers Consumption <sup>02 ***</sup>	381 300
Rainfall Index <sup>02 (mm)</sup>	151

\* EAP: Economically Active Population

\* 1000ha \*\* 1000heads \*\*\* Tonnes N,P<sub>2</sub>O<sub>5</sub>,K<sub>2</sub>O

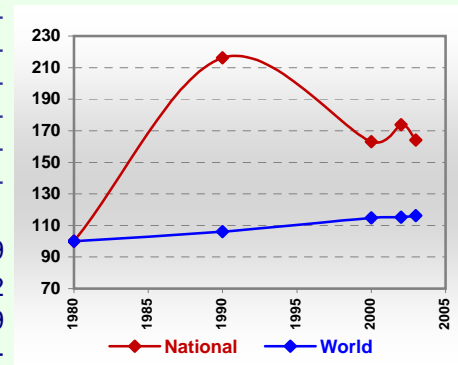
### Resources Distribution



### Production

Agriculture <sup>03 *</sup>		Forestry <sup>02</sup>		Fisheries <sup>02 *</sup>	
Cereals	2 379	Indust.Roundwood **	2	Pulpwd.,Rnd&Split **	-
Meat	629	Paper, Paperboard *	29	Roundwood **	-
Fruits & Vegetables	3 104			Log:Saw&Veneer **	-
Roots & Tubers	315			Sawnwood **	-
Pulses	8			Wood Charcoal *	-
Oilseeds & Nuts	2			Woodfuel **	-
Sugar Crops	-			Wood Pulp *	-
Tobacco	-			Wood-based Panels **	-
Fibre Crops	-				
				Pelagic	19
				Freshwater	2
				Demersal	29
				Molluscs	-

### Per Capita Agricultural Production Index



\* 1000Tonnes \*\* 1000m<sup>3</sup>

Time reference=<sup>99-01</sup>:1999-2001, <sup>00</sup>:2000, <sup>02</sup>:2002, <sup>00-02</sup>:2000-2002, <sup>03</sup>:2003, <sup>04</sup>:2004, <sup>ly</sup>:Latest Available Year

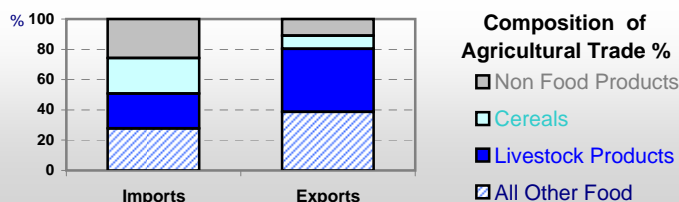


# Country profiles

## Saudi Arabia

### Trade <sup>02</sup>

Agricultural Imports *	5 141
% 4 Major Imports in Agr.Imp	21
% Agr. Imports in Tot. Imports	16
Fishery Imports *	130
Forestry Imports *	755
Agricultural Exports *	526
% 4 Major Exports in Agr.Exp.	9
% Agr. Exports in Tot.Exports	1
Fishery Exports *	10
Forestry Exports *	16



### Trade Partners & Products

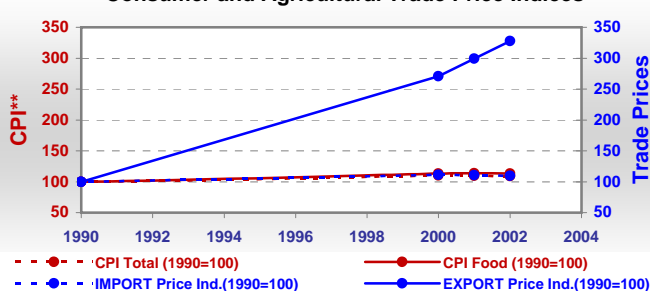
Major Import Partner	USA	Brazil	Syria
Major Export Partner	Unspecified	Senegal	France
Major Imports	Barley	Sheep	Mil Rice
Major Exports	Butterm,Curd	Fruit Juice	Pastry

\* Million \$

### Prices

Producer Prices <sup>00-02</sup>	\$*	\$ Green *
Wheat	-	-
Rice	-	-
Maize	-	-
Soybean	-	-
Coffee	-	-
Tobacco	-	-
Cow Milk	-	-
Cattle (Live Weight)	-	-
Pig (Live Weight)	-	-
Chicken (Live Weight)	-	-

### Consumer and Agricultural Trade Price Indices

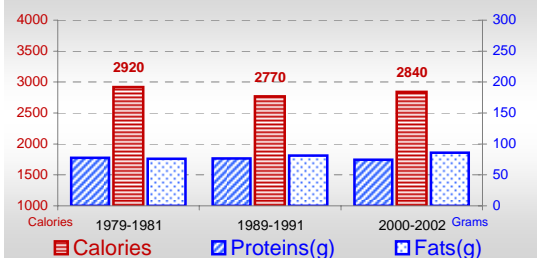


\* per Tonne

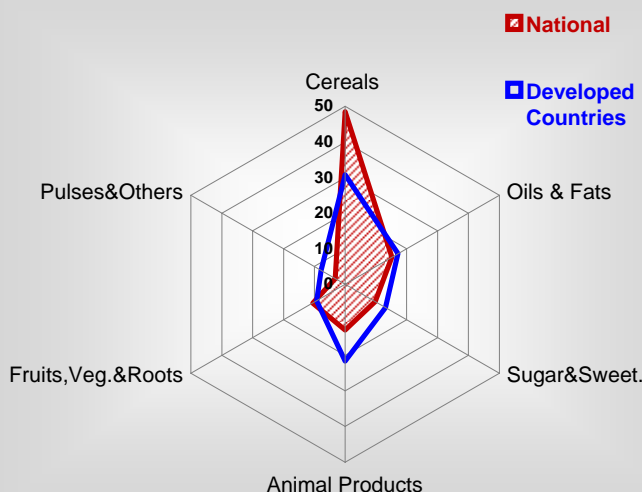
\*\* CPI : Consumer Price Index

### Consumption

#### Per Capita Daily Consumption



#### Source of Dietary Energy Consumption % <sup>00-02</sup>



#### Per Capita Daily Calorie Intake From Selected Food Items <sup>00-02</sup>

Rice	388
Wheat	649
Maize	221
Sorghum	85
Potatoes	33
Cassava	-
Sugar	269
Soybean Oil	6
Palm Oil	262
Milk	141
Anim.Fats(Raw&Butter)	34
Eggs	15
Pig Meat	-
Poultry Meat	122
Bovine Meat	15
Sheep & Goats Meat	44

#### Food Balance <sup>00-02</sup> (1000Tonnes)

Food Groups	Production (+)	Exports (-)	Imports (+)	Seed, Feed, Other Uses (-)	Consumption (=)
Cereals	2 464	32	6 290	5 313	3 409
Veg.oils	14	28	381	-10	377
Sugar&Sw.	-	15	556	-85	626
Roots&Tub.	349	44	173	72	407
Meat	643	23	426	0	1 046
Milk	992	331	1 285	52	1 894

Time reference= <sup>99-01</sup>:1999-2001, <sup>00</sup>:2000, <sup>02</sup>:2002, <sup>00-02</sup>:2000-2002, <sup>03</sup>:2003, <sup>04</sup>:2004, <sup>ly</sup>:Latest Available Year