

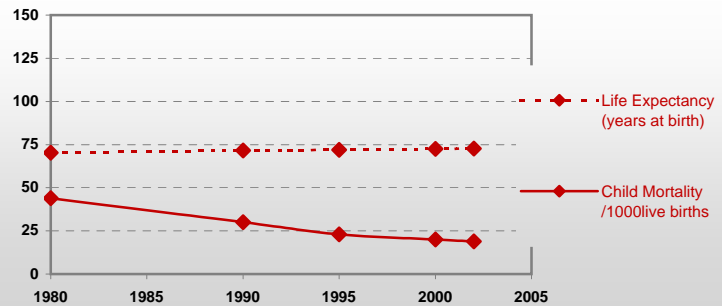


# Country profiles

## Serbia and Montenegro

### General / Welfare

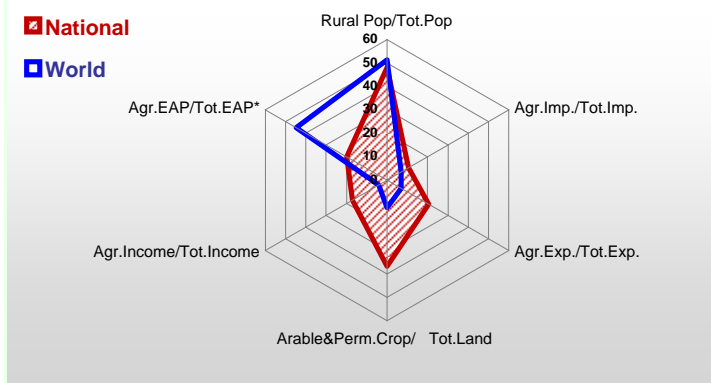
Population <sup>04 *</sup>	10 519
Per Capita Income <sup>02 **</sup>	1 830
Per Capita Agricultural Income <sup>02**</sup>	1 317
Total Exports <sup>02 ****</sup>	2 275
Total Imports <sup>02 ****</sup>	6 320
Agric. External Assistance <sup>99-01 ***</sup>	33 390
Food Consumption Inequality (G) <sup>ly</sup>	0,12
Income Inequality (G) <sup>ly</sup>	-
Land Inequality (G) <sup>ly</sup>	-
Undernourished Population % <sup>00-02</sup>	11



\* 1000 \*\* \$ \*\*\*\* Million \$ --- (G) : Gini Coefficient --- Income refers to GDP at 1995 Constant Prices

### Agriculture In The Economy<sup>ly</sup>

### Resources

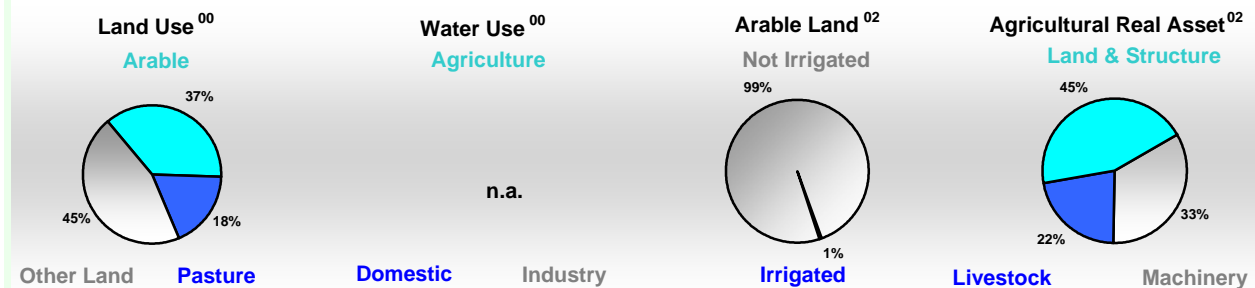


Arable Land <sup>00 *</sup>	3 406
Permanent Crops <sup>00 *</sup>	330
Pasture <sup>00 *</sup>	1 851
Cattle & Buffaloes <sup>03 **</sup>	1 373
Sheep & Goats <sup>03 **</sup>	1 956
Tractors <sup>02 *</sup>	120
Harvesters&Threshers <sup>02 *</sup>	1
Fertilizers Production <sup>02 ***</sup>	128 690
Fertilizers Consumption <sup>02 ***</sup>	307 790
Rainfall Index <sup>02 (mm)</sup>	773

\* EAP : Economically Active Population

\* 1000ha \*\* 1000heads \*\*\* Tonnes N,P<sub>2</sub>O<sub>5</sub>,K<sub>2</sub>O

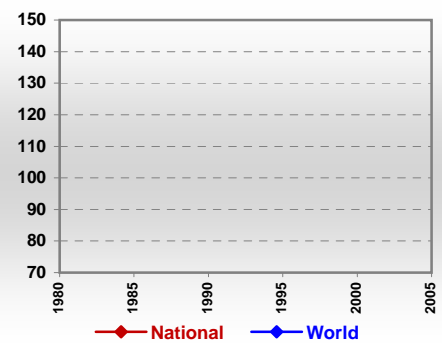
### Resources Distribution



### Production

<b>Agriculture<sup>03 *</sup></b>		Pulpwd.,Rnd&Split <sup>**</sup>	164
Cereals	5 476	Roundwood <sup>**</sup>	2 936
Meat	847	Log:Saw&Veneer <sup>**</sup>	1 040
Fruits & Vegetables	2 862	Sawnwood <sup>**</sup>	432
Roots & Tubers	803	Wood Charcoal <sup>*</sup>	2
Pulses	136	Woodfuel <sup>**</sup>	1 650
Oilseeds & Nuts	212	Wood Pulp <sup>*</sup>	152
Sugar Crops	1 738	Wood-based Panels <sup>**</sup>	60
Tobacco	12	<b>Fisheries<sup>02 *</sup></b>	
Fibre Crops	0	Pelagic	0
<b>Forestry<sup>02</sup></b>		Freshwater	3
Indust.Roundwood <sup>**</sup>	1 286	Demersal	0
Paper, Paperboard <sup>*</sup>	254	Molluscs	0

### Per Capita Agricultural Production Index



\* 1000Tonnes \*\* 1000m<sup>3</sup>

Time reference= <sup>99-01</sup> :1999-2001, <sup>00</sup> :2000, <sup>02</sup> :2002, <sup>00-02</sup> :2000-2002, <sup>03</sup> :2003, <sup>04</sup> :2004, <sup>ly</sup> :Latest Available Year

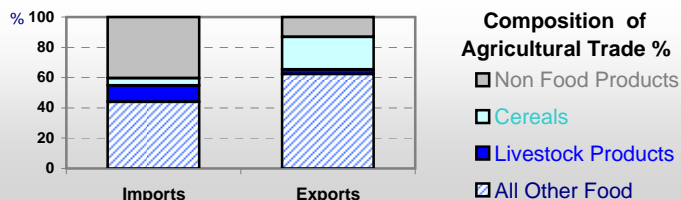


# Country profiles

## Serbia and Montenegro

### Trade <sup>02</sup>

Agricultural Imports *	523
% 4 Major Imports in Agr.Imp	2
% Agr. Imports in Tot. Imports	10
Fishery Imports *	51
Forestry Imports *	123
Agricultural Exports *	407
% 4 Major Exports in Agr.Exp.	30
% Agr. Exports in Tot.Exports	20
Fishery Exports *	0
Forestry Exports *	63



### Trade Partners & Products

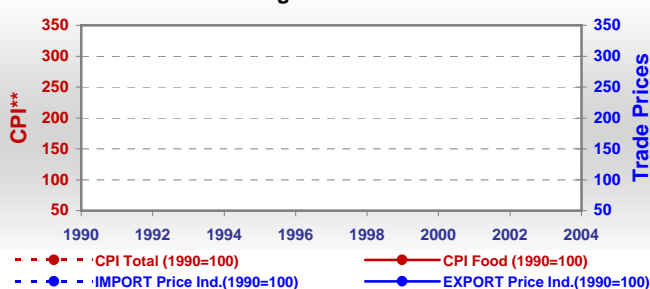
<b>Major Import Partner</b>			
<b>Major Export Partner</b>			
<b>Major Imports</b>	Cigarettes	Food Prep	Choc Prod Ns
<b>Major Exports</b>	Fruit Pr nes	Sugar Refind	Wheat

\* Million \$

### Prices

Producer Prices <sup>00-02</sup>	\$*	\$ Green *
Wheat	-	-
Rice	-	-
Maize	-	-
Soybean	-	-
Coffee	-	-
Tobacco	-	-
Cow Milk	-	-
Cattle (Live Weight)	-	-
Pig (Live Weight)	-	-
Chicken (Live Weight)	-	-

### Consumer and Agricultural Trade Price Indices

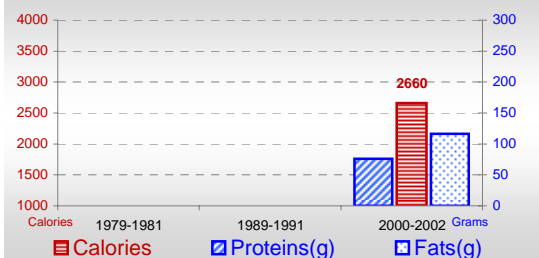


\* per Tonne

\*\* CPI : Consumer Price Index

### Consumption

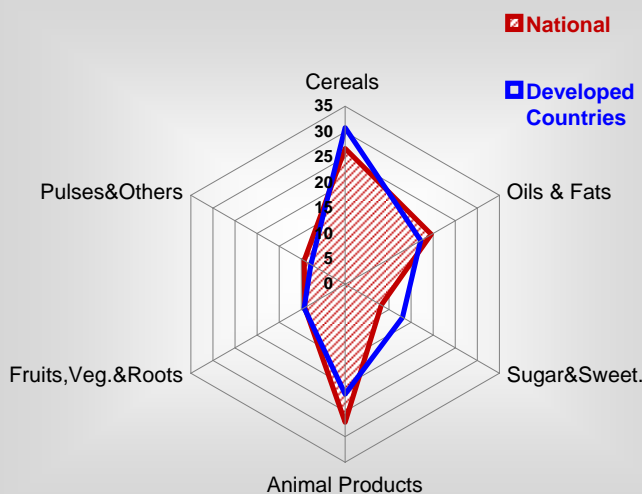
#### Per Capita Daily Consumption



#### Per Capita Daily Calorie Intake From Selected Food Items <sup>00-02</sup>

Rice	7
Wheat	569
Maize	126
Sorghum	-
Potatoes	82
Cassava	-
Sugar	211
Soybean Oil	75
Palm Oil	3
Milk	259
Anim.Fats(Raw&Butter)	269
Eggs	26
Pig Meat	313
Poultry Meat	35
Bovine Meat	57
Sheep & Goats Meat	15

#### Source of Dietary Energy Consumption % <sup>00-02</sup>



### Food Balance <sup>00-02</sup> (1000Tonnes)

Food Groups	Production (+)	Exports (-)	Imports (+)	Seed, Feed, Other Uses (-)	Consumption (=)
Cereals	7 585	366	134	6 378	975
Veg.oils	122	28	14	-2	110
Sugar&Sw.	215	93	109	-26	257
Roots&Tub.	912	7	17	448	474
Meat	855	7	26	1	873
Milk	1 844	5	49	194	1 694

Time reference= <sup>99-01</sup>:1999-2001, <sup>00</sup>:2000, <sup>02</sup>:2002, <sup>00-02</sup>:2000-2002, <sup>03</sup>:2003, <sup>04</sup>:2004, <sup>ly</sup>:Latest Available Year