

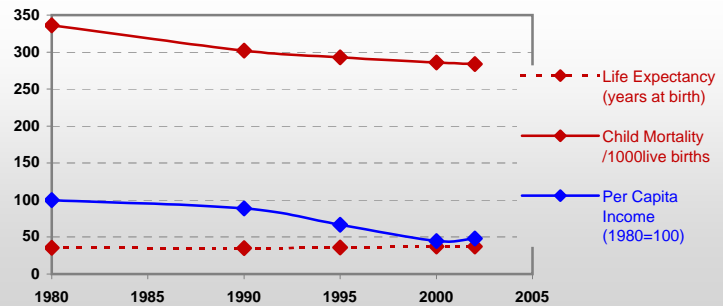


Country profiles

Sierra Leone

General / Welfare

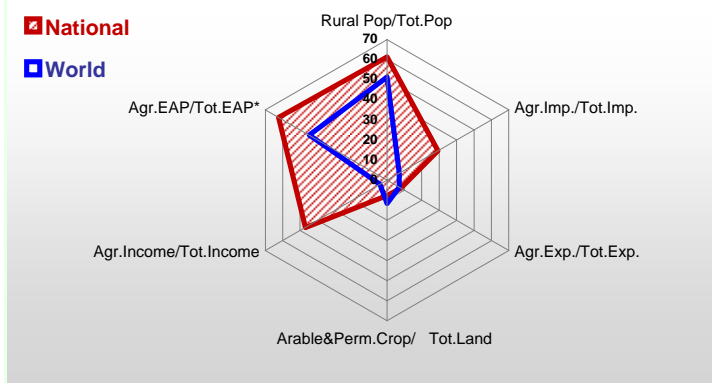
Population ^{04 *}	5 168
Per Capita Income ^{02 **}	165
Per Capita Agricultural Income ^{02**}	139
Total Exports ^{02 ****}	99
Total Imports ^{02 ****}	490
Agric. External Assistance ^{99-01 ***}	30 370
Food Consumption Inequality (G) ^{ly}	0,19
Income Inequality (G) ^{ly}	0,63
Land Inequality (G) ^{ly}	-
Undernourished Population % ⁰⁰⁻⁰²	50



*1000 ** \$ **** Million \$ --- (G) : Gini Coefficient --- Income refers to GDP at 1995 Constant Prices

Agriculture In The Economy^{ly}

Resources

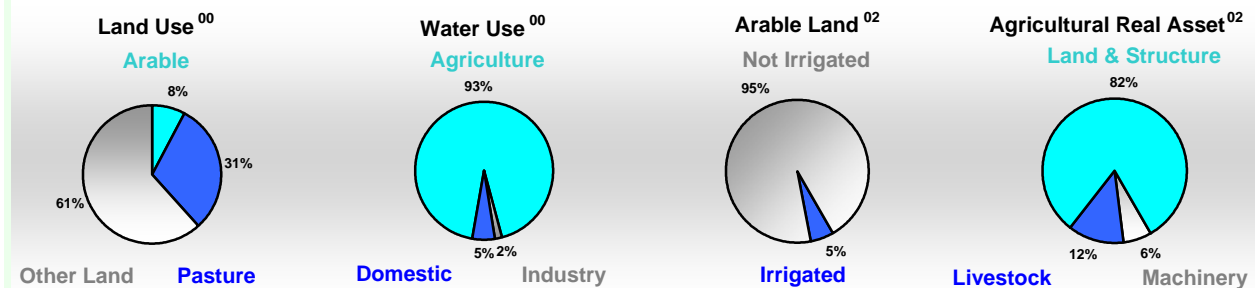


Arable Land ^{00 *}	490
Permanent Crops ^{00 *}	60
Pasture ^{00 *}	2 200
Cattle & Buffaloes ^{03 **}	400
Sheep & Goats ^{03 **}	595
Tractors ^{02 *}	0
Harvesters&Threshers ^{02 *}	0
Fertilizers Production ^{02 ***}	-
Fertilizers Consumption ^{02 ***}	300
Rainfall Index ^{02 (mm)}	2 546

* EAP : Economically Active Population

* 1000ha ** 1000heads *** Tonnes N,P₂O₅,K₂O

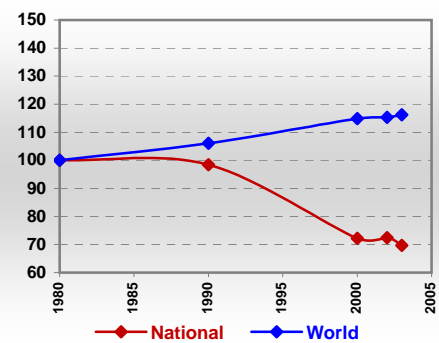
Resources Distribution



Production

Agriculture^{03 *}	Pulpwd.,Rnd&Split ^{**}	-
Cereals	Roundwood ^{**}	5 497
Meat	Log:Saw&Veneer ^{**}	4
Fruits & Vegetables	Sawnwood ^{**}	5
Roots & Tubers	Wood Charcoal [*]	312
Pulses	Woodfuel ^{**}	5 374
Oilseeds & Nuts	Wood Pulp [*]	-
Sugar Crops	Wood-based Panels ^{**}	-
Tobacco	Fisheries^{02 *}	
Fibre Crops	Pelagic	49
Forestry⁰²	Freshwater	15
Indust.Roundwood ^{**}	Demersal	11
Paper, Paperboard [*]	Molluscs	2

Per Capita Agricultural Production Index



* 1000Tonnes ** 1000m³

Time reference=⁹⁹⁻⁰¹:1999-2001, ⁰⁰:2000, ⁰²:2002, ⁰⁰⁻⁰²:2000-2002, ⁰³:2003, ⁰⁴:2004, ^{ly}:Latest Available Year



Country profiles

Sierra Leone

Trade ⁰²

Agricultural Imports *	157
% 4 Major Imports in Agr.Imp	49
% Agr. Imports in Tot. Imports	29
Fishery Imports *	4
Forestry Imports *	3
Agricultural Exports *	7
% 4 Major Exports in Agr.Exp.	66
% Agr. Exports in Tot.Exports	8
Fishery Exports *	12
Forestry Exports *	1



Trade Partners & Products

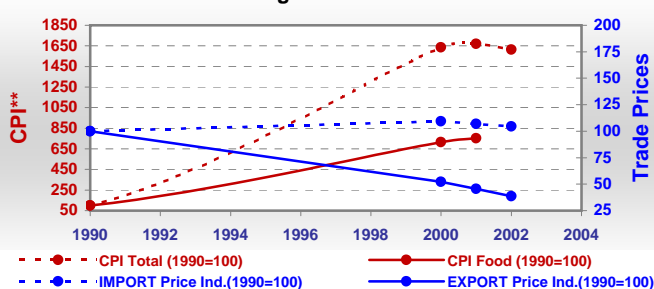
Major Import Partner			
Major Export Partner			
Major Imports	Mil Rice	Cigarettes	Wheat
Major Exports	Cocoa Beans	Coffee,Green	Cigarettes

* Million \$

Prices

Producer Prices ⁰⁰⁻⁰²	\$*	\$ Green *
Wheat	-	-
Rice	-	-
Maize	-	-
Soybean	-	-
Coffee	-	-
Tobacco	-	-
Cow Milk	-	-
Cattle (Live Weight)	-	-
Pig (Live Weight)	-	-
Chicken (Live Weight)	-	-

Consumer and Agricultural Trade Price Indices

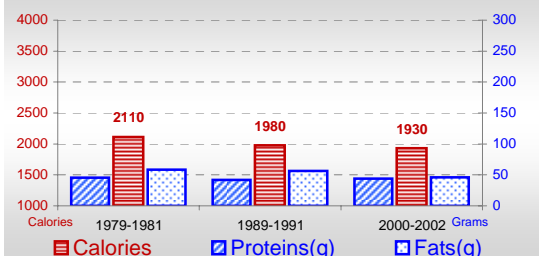


* per Tonne

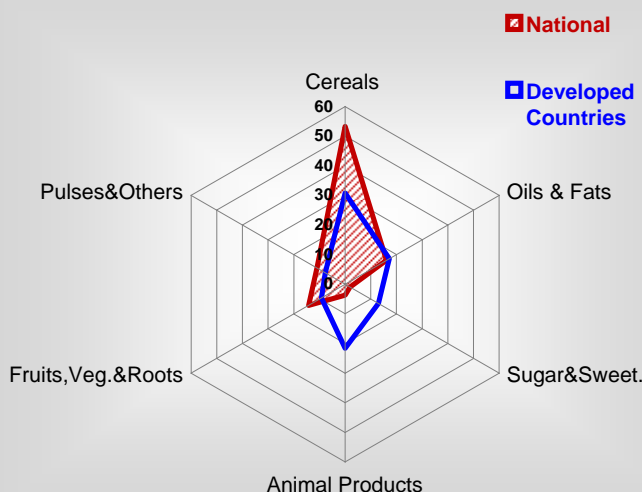
** CPI : Consumer Price Index

Consumption

Per Capita Daily Consumption



Source of Dietary Energy Consumption % ⁰⁰⁻⁰²



Per Capita Daily Calorie Intake From Selected Food Items ⁰⁰⁻⁰²

Rice	816
Wheat	131
Maize	38
Sorghum	22
Potatoes	-
Cassava	191
Sugar	34
Soybean Oil	22
Palm Oil	196
Milk	10
Anim.Fats(Raw&Butter)	2
Eggs	6
Pig Meat	5
Poultry Meat	6
Bovine Meat	7
Sheep & Goats Meat	1

Food Balance ⁰⁰⁻⁰² (1000Tonnes)

Food Groups	Production (+)	Exports (-)	Imports (+)	Seed, Feed, Other Uses (-)	Consumption (=)
Cereals	183	-	203	-114	500
Veg.oils	46	-	13	0	59
Sugar&Sw.	2	-	15	0	17
Roots&Tub.	322	2	1	3	319
Meat	22	-	4	0	26
Milk	21	-	9	1	29

Time reference= ⁹⁹⁻⁰¹:1999-2001, ⁰⁰:2000, ⁰²:2002, ⁰⁰⁻⁰²:2000-2002, ⁰³:2003, ⁰⁴:2004, ^{ly}:Latest Available Year