



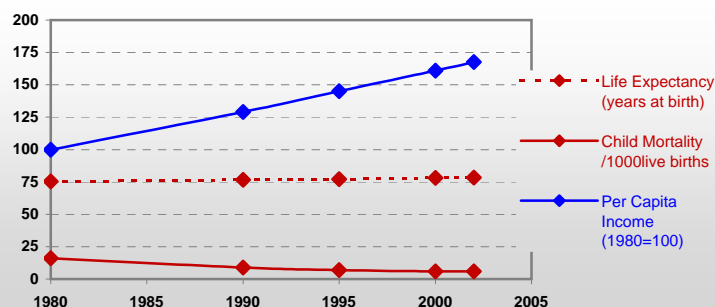
# Country profiles

## Spain



### General / Welfare

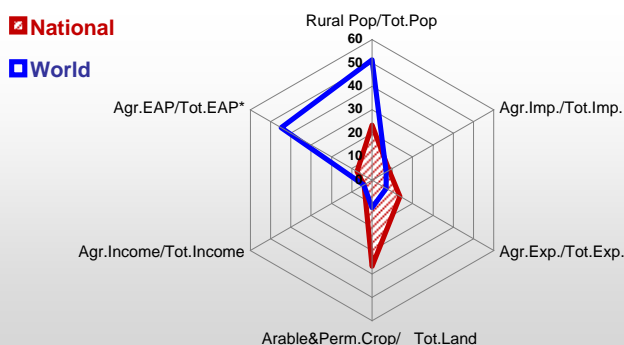
Population <sup>04 *</sup>	41 128
Per Capita Income <sup>02 **</sup>	18 050
Per Capita Agricultural Income <sup>02**</sup>	10 039
Total Exports <sup>02 ****</sup>	125 740
Total Imports <sup>02 ****</sup>	165 175
Agric. External Assistance <sup>99-01 ***</sup>	-333 031
Food Consumption Inequality (G) <sup>ly</sup>	0,11
Income Inequality (G) <sup>ly</sup>	0,33
Land Inequality (G) <sup>ly</sup>	0,77
Undernourished Population % <sup>00-02</sup>	< 2.5



\* 1000 \*\* \$ \*\*\*\* Million \$ --- (G): Gini Coefficient --- Income refers to GDP at 1995 Constant Prices

### Agriculture In The Economy<sup>ly</sup>

### Resources

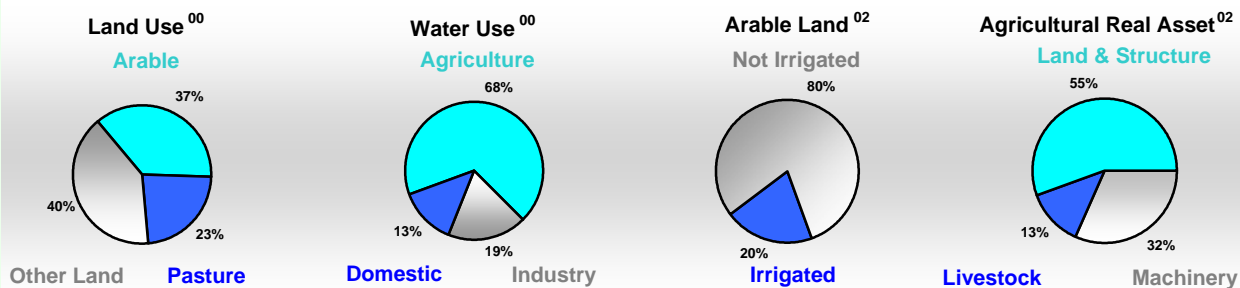


Arable Land <sup>00 *</sup>	13 400
Permanent Crops <sup>00 *</sup>	4 904
Pasture <sup>00 *</sup>	11 462
Cattle & Buffaloes <sup>03 **</sup>	6 478
Sheep & Goats <sup>03 **</sup>	26 860
Tractors <sup>02 *</sup>	69
Harvesters&Threshers <sup>02 *</sup>	4
Fertilizers Production <sup>02 ***</sup>	1 604 400
Fertilizers Consumption <sup>02 ***</sup>	2 159 700
Rainfall Index <sup>02 (mm)</sup>	645

\* EAP: Economically Active Population

\* 1000ha \*\* 1000heads \*\*\* Tonnes N,P<sub>2</sub>O<sub>5</sub>,K<sub>2</sub>O

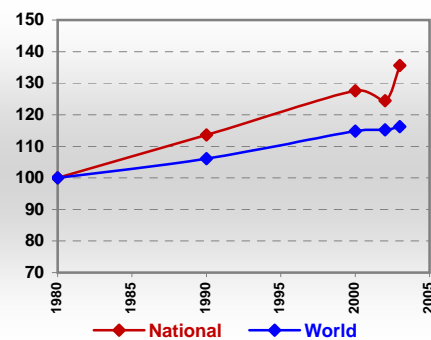
### Resources Distribution



### Production

<b>Agriculture<sup>03 *</sup></b>			
Cereals	21 449	Pulpwd.,Rnd&Split <sup>**</sup>	5 373
Meat	5 474	Roundwood <sup>**</sup>	15 839
Fruits & Vegetables	29 549	Log:Saw&Veneer <sup>**</sup>	7 603
Roots & Tubers	2 808	Sawnwood <sup>**</sup>	3 524
Pulses	533	Wood Charcoal <sup>*</sup>	-
Oilseeds & Nuts	2 199	Woodfuel <sup>**</sup>	1 989
Sugar Crops	6 550	Wood Pulp <sup>*</sup>	1 719
Tobacco	44	Wood-based Panels <sup>**</sup>	5 030
Fibre Crops	122	<b>Fisheries<sup>02 *</sup></b>	
<b>Forestry<sup>02</sup></b>		Pelagic	499
Indust.Roundwood <sup>**</sup>	13 850	Freshwater	41
Paper, Paperboard <sup>*</sup>	5 365	Demersal	289
		Molluscs	217

### Per Capita Agricultural Production Index



\* 1000Tonnes \*\* 1000m<sup>3</sup>

Time reference= <sup>99-01</sup>:1999-2001, <sup>00</sup>:2000, <sup>02</sup>:2002, <sup>00-02</sup>:2000-2002, <sup>03</sup>:2003, <sup>04</sup>:2004, <sup>ly</sup>:Latest Available Year

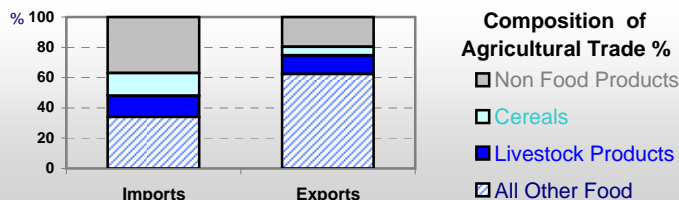


# Country profiles

## Spain

### Trade <sup>02</sup>

Agricultural Imports *	12 953
% 4 Major Imports in Agr.Imp	12
% Agr. Imports in Tot. Imports	8
Fishery Imports *	3 853
Forestry Imports *	4 196
Agricultural Exports *	16 452
% 4 Major Exports in Agr.Exp.	19
% Agr. Exports in Tot.Exports	14
Fishery Exports *	1 890
Forestry Exports *	2 139



### Trade Partners & Products

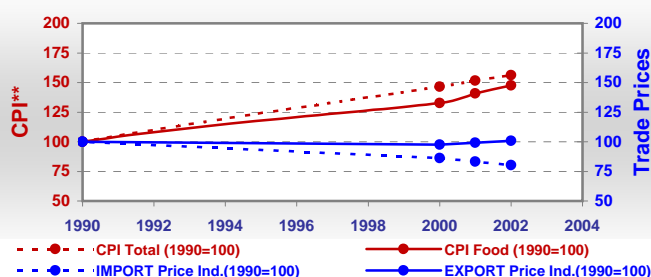
<b>Major Import Partner</b>	France	Germany	Netherlands
<b>Major Export Partner</b>	France	Germany	Italy
<b>Major Imports</b>	Bev Dis Alc	Cigarettes	Wheat
<b>Major Exports</b>	Wine	Oil of Olive	Tangerines

\* Million \$

### Prices

Producer Prices <sup>00-02</sup>	\$*	\$ Green *
Wheat	125	102
Rice	254	208
Maize	128	105
Soybean	211	174
Coffee	6 976	5 737
Tobacco	2 050	1 701
Cow Milk	265	218
Cattle (Live Weight)	1 542	1 265
Pig (Live Weight)	1 198	987
Chicken (Live Weight)	783	644

### Consumer and Agricultural Trade Price Indices

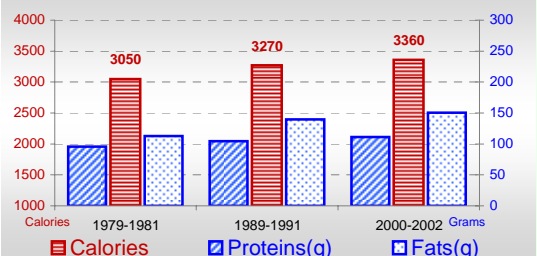


\* per Tonne

\*\* CPI : Consumer Price Index

### Consumption

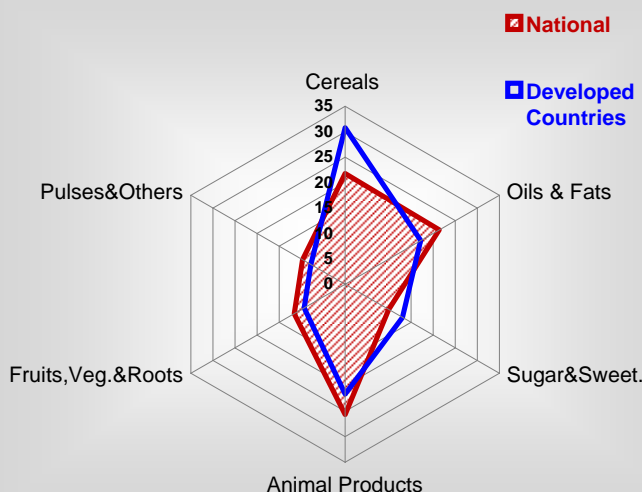
#### Per Capita Daily Consumption



#### Per Capita Daily Calorie Intake From Selected Food Items <sup>00-02</sup>

Rice	79
Wheat	636
Maize	12
Sorghum	-
Potatoes	144
Cassava	-
Sugar	322
Soybean Oil	91
Palm Oil	-
Milk	247
Anim.Fats(Raw&Butter)	58
Eggs	54
Pig Meat	288
Poultry Meat	89
Bovine Meat	47
Sheep & Goats Meat	37

#### Source of Dietary Energy Consumption % <sup>00-02</sup>



### Food Balance <sup>00-02</sup> (1000Tonnes)

Food Groups	Production (+)	Exports (-)	Imports (+)	Seed, Feed, Other Uses (-)	Consumption (=)
Cereals	21 137	2 158	9 237	24 203	4 013
Veg.oils	2 193	966	707	832	1 102
Sugar&Sw.	1 285	406	554	37	1 396
Roots&Tub.	3 087	260	4 067	3 591	3 304
Meat	5 069	697	332	-25	4 729
Milk	7 012	1 012	2 390	1 711	6 679

Time reference= <sup>99-01</sup>:1999-2001, <sup>00</sup>:2000, <sup>02</sup>:2002, <sup>00-02</sup>:2000-2002, <sup>03</sup>:2003, <sup>04</sup>:2004, <sup>ly</sup>:Latest Available Year