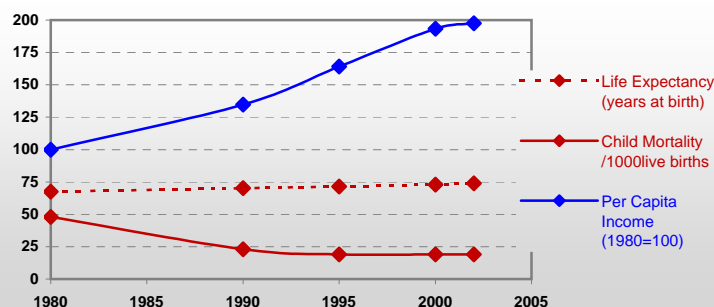


Sri Lanka



General / Welfare

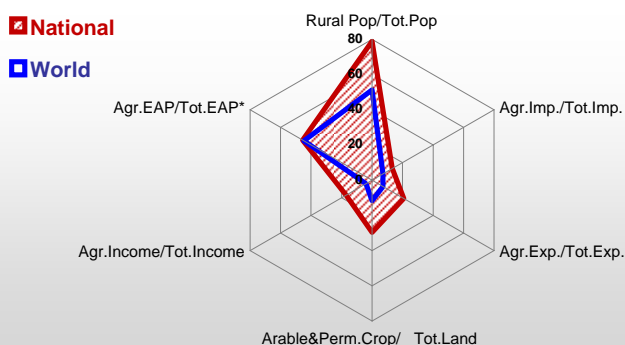
Population ^{04 *}	19 218
Per Capita Income ^{02 **}	899
Per Capita Agricultural Income ^{02**}	330
Total Exports ^{02 ****}	4 699
Total Imports ^{02 ****}	6 105
Agric. External Assistance ^{99-01 ***}	240 271
Food Consumption Inequality (G) ^{ly}	0,16
Income Inequality (G) ^{ly}	0,34
Land Inequality (G) ^{ly}	-
Undernourished Population % ⁰⁰⁻⁰²	22



*1000 ** \$ *** 1000 \$ **** Million \$ --- (G) : Gini Coefficient --- Income refers to GDP at 1995 Constant Prices

Agriculture In The Economy^{ly}

Resources

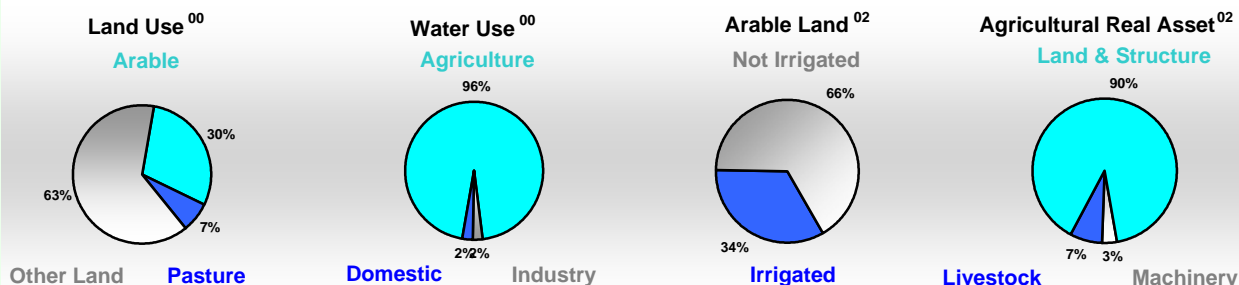


Arable Land ^{00 *}	895
Permanent Crops ^{00 *}	1 015
Pasture ^{00 *}	440
Cattle & Buffaloes ^{03 **}	1 774
Sheep & Goats ^{03 **}	502
Tractors ^{02 *}	11
Harvesters&Threshers ^{02 *}	0
Fertilizers Production ^{02 ***}	10 546
Fertilizers Consumption ^{02 ***}	284 218
Rainfall Index ^{02 (mm)}	1 700

* EAP : Economically Active Population

* 1000ha ** 1000heads *** Tonnes N,P₂O₅,K₂O

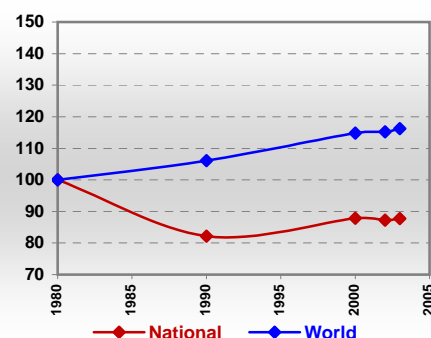
Resources Distribution



Production

Agriculture ^{03 *}		Pulpwd.,Rnd&Split ^{**}	
Cereals	3 107	Roundwood ^{**}	6 468
Meat	126	Log:Saw&Veneer ^{**}	117
Fruits & Vegetables	1 444	Sawnwood ^{**}	61
Roots & Tubers	345	Wood Charcoal [*]	1
Pulses	21	Woodfuel ^{**}	5 774
Oilseeds & Nuts	251	Wood Pulp [*]	3
Sugar Crops	1 015	Wood-based Panels ^{**}	22
Tobacco	4	Fisheries^{02 *}	
Fibre Crops	-	Pelagic	176
Forestry⁰²		Freshwater	32
Indust.Roundwood ^{**}	694	Demersal	42
Paper, Paperboard [*]	25	Molluscs	0

Per Capita Agricultural Production Index



* 1000Tonnes ** 1000m³

Time reference= ⁹⁹⁻⁰¹ :1999-2001, ⁰⁰ :2000, ⁰² :2002, ⁰⁰⁻⁰² :2000-2002, ⁰³ :2003, ⁰⁴ :2004, ^{ly} :Latest Available Year



Country profiles

Sri Lanka

Trade ⁰²

Agricultural Imports *	807
% 4 Major Imports in Agr.Imp	28
% Agr. Imports in Tot. Imports	13
Fishery Imports *	71
Forestry Imports *	74
Agricultural Exports *	971
% 4 Major Exports in Agr.Exp.	70
% Agr. Exports in Tot.Exports	21
Fishery Exports *	84
Forestry Exports *	9



Trade Partners & Products

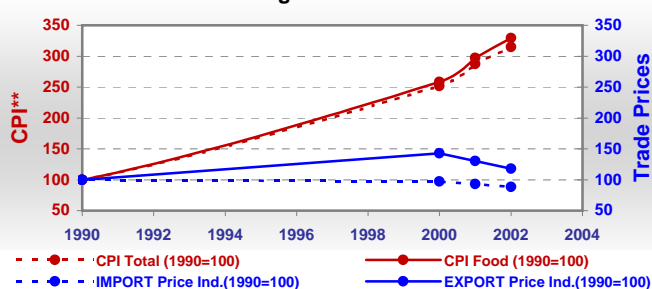
Major Import Partner	India	Australia	USA
Major Export Partner	Russian Fed	Untd Arab Em	Syria
Major Imports	Wheat	Sugar Refind	Cowmilk Dry
Major Exports	Tea	Cinnamon	Tobacco

* Million \$

Prices

Producer Prices ⁰⁰⁻⁰²	\$*	\$ Green *
Wheat	-	-
Rice	145	138
Maize	171	162
Soybean	496	480
Coffee	739	695
Tobacco	524	493
Cow Milk	209	199
Cattle (Live Weight)	346	330
Pig (Live Weight)	778	741
Chicken (Live Weight)	826	786

Consumer and Agricultural Trade Price Indices

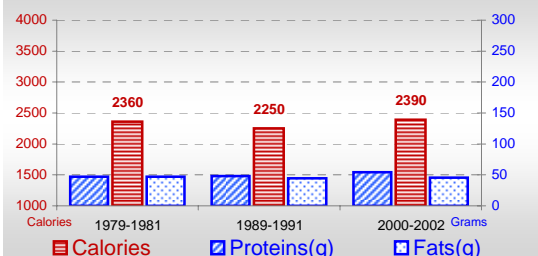


* per Tonne

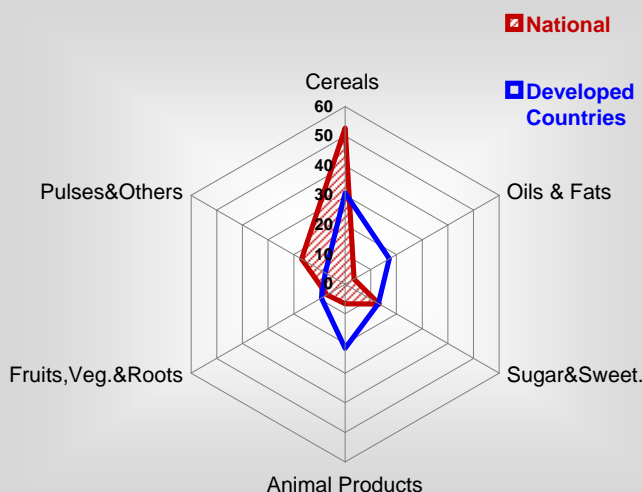
** CPI : Consumer Price Index

Consumption

Per Capita Daily Consumption



Source of Dietary Energy Consumption % ⁰⁰⁻⁰²



Per Capita Daily Calorie Intake From Selected Food Items ⁰⁰⁻⁰²

Rice	900
Wheat	318
Maize	37
Sorghum	-
Potatoes	17
Cassava	37
Sugar	314
Soybean Oil	1
Palm Oil	-
Milk	71
Anim.Fats(Raw&Butter)	8
Eggs	9
Pig Meat	1
Poultry Meat	14
Bovine Meat	8
Sheep & Goats Meat	1

Food Balance ⁰⁰⁻⁰² (1000Tonnes)

Food Groups	Production (+)	Exports (-)	Imports (+)	Seed, Feed, Other Uses (-)	Consumption (=)
Cereals	1 904	6	1 101	313	2 686
Veg.oils	57	4	112	108	57
Sugar&Sw.	51	-	579	39	591
Roots&Tub.	350	6	102	124	323
Meat	115	-	2	0	117
Milk	297	1	505	21	780

Time reference= ⁹⁹⁻⁰¹:1999-2001, ⁰⁰:2000, ⁰²:2002, ⁰⁰⁻⁰²:2000-2002, ⁰³:2003, ⁰⁴:2004, ^{ly}:Latest Available Year