

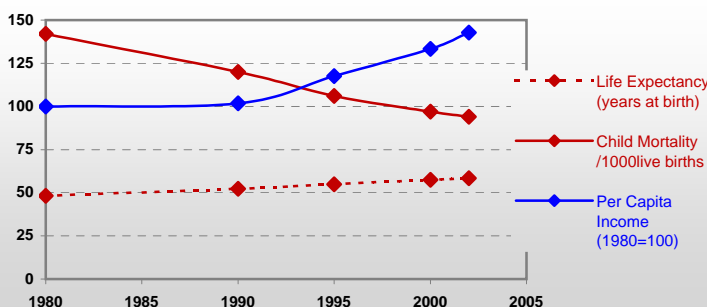
FAO Country profiles

Sudan



General / Welfare

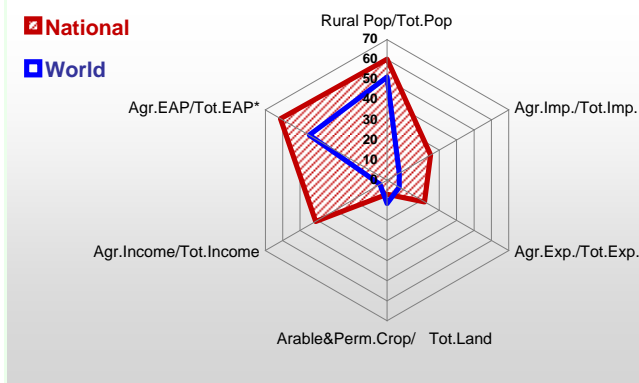
Population ^{04 *}	34 333
Per Capita Income ^{02 **}	330
Per Capita Agricultural Income ^{02**}	227
Total Exports ^{02 ****}	1 718
Total Imports ^{02 ****}	1 915
Agric. External Assistance ^{99-01 ***}	86 824
Food Consumption Inequality (G) ^{ly}	0,15
Income Inequality (G) ^{ly}	-
Land Inequality (G) ^{ly}	-
Undernourished Population % ⁰⁰⁻⁰²	27



* 1000 ** \$ *** 1000 \$ **** Million \$ --- (G): Gini Coefficient --- Income refers to GDP at 1995 Constant Prices

Agriculture In The Economy ^{ly}

Resources

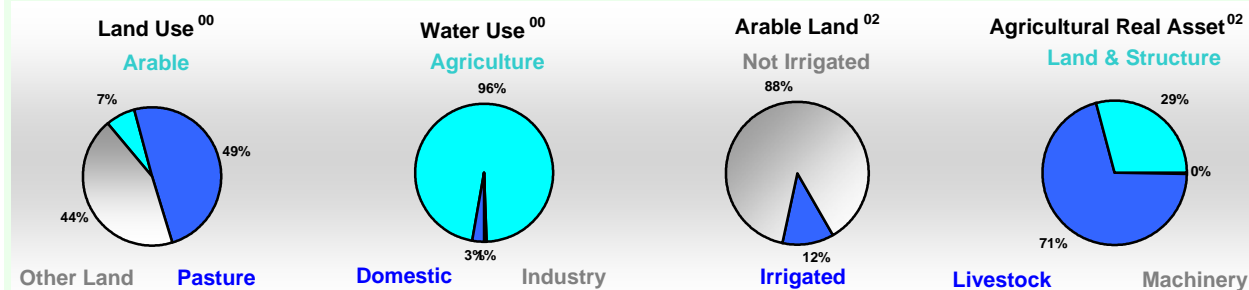


Arable Land ^{00 *}	16 233
Permanent Crops ^{00 *}	420
Pasture ^{00 *}	117 180
Cattle & Buffaloes ^{03 **}	38 325
Sheep & Goats ^{03 **}	87 000
Tractors ^{02 *}	1
Harvesters&Threshers ^{02 *}	0
Fertilizers Production ^{02 ***}	-
Fertilizers Consumption ^{02 ***}	69 496
Rainfall Index ^{02 (mm)}	741

* EAP: Economically Active Population ---

* 1000ha ** 1000heads *** Tonnes N,P₂O₅,K₂O

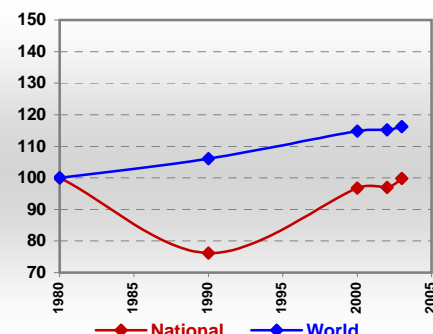
Resources Distribution



Production

Agriculture ^{03 *}		Pulpwd.,Rnd&Split ^{**}	-
Cereals	6 380	Roundwood ^{**}	19 241
Meat	698	Log:Saw&Veneer ^{**}	123
Fruits & Vegetables	3 007	Sawnwood ^{**}	51
Roots & Tubers	172	Wood Charcoal [*]	795
Pulses	272	Woodfuel ^{**}	17 068
Oilseeds & Nuts	547	Wood Pulp [*]	-
Sugar Crops	5 500	Wood-based Panels ^{**}	2
Tobacco	-		
Fibre Crops	79	Fisheries ^{02 *}	
		Pelagic	55
		Freshwater	0
Indust.Roundwood ^{**}	2 173	Demersal	0
Paper, Paperboard [*]	3	Molluscs	-

Per Capita Agricultural Production Index



* 1000Tonnes ** 1000m³

Time reference= ⁹⁹⁻⁰¹:1999-2001, ⁰⁰:2000, ⁰²:2002, ⁰⁰⁻⁰²:2000-2002, ⁰³:2003, ⁰⁴:2004, ^{ly}:Latest Available Year

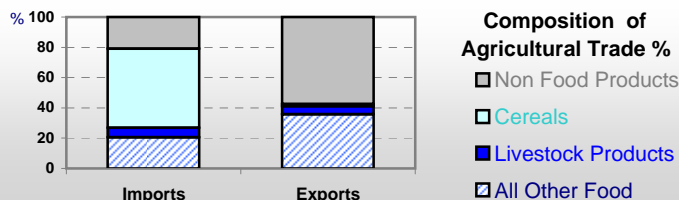


Country profiles

Sudan

Trade ⁰²

Agricultural Imports *	478
% 4 Major Imports in Agr.Imp	49
% Agr. Imports in Tot. Imports	25
Fishery Imports *	1
Forestry Imports *	11
Agricultural Exports *	370
% 4 Major Exports in Agr.Exp.	23
% Agr. Exports in Tot.Exports	22
Fishery Exports *	0
Forestry Exports *	1



Trade Partners & Products

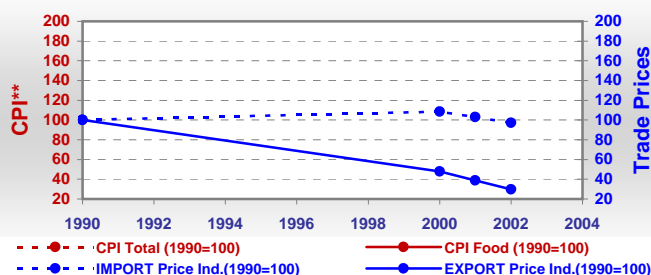
Major Import Partner	Australia	Canada	Kenya
Major Export Partner	Saudi Arabia	Egypt	Unspecified
Major Imports	Wheat	Food Prep	Tea
Major Exports	Sheep	Sesame Seed	Cotton Lint

* Million \$

Prices

Producer Prices ⁰⁰⁻⁰²	\$*	\$ Green *
Wheat	235	169
Rice	385	278
Maize	538	388
Soybean	-	-
Coffee	-	-
Tobacco	-	-
Cow Milk	620	447
Cattle (Live Weight)	804	581
Pig (Live Weight)	-	-
Chicken (Live Weight)	851	615

Consumer and Agricultural Trade Price Indices

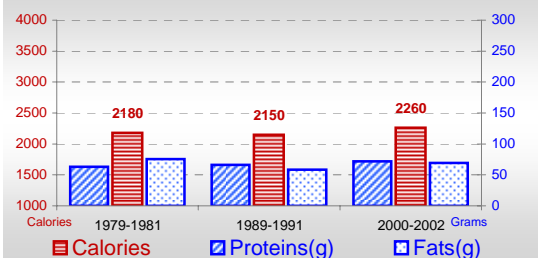


* per Tonne

** CPI : Consumer Price Index

Consumption

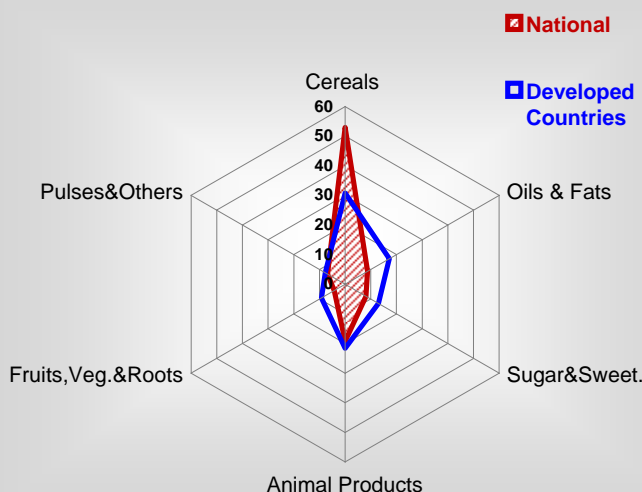
Per Capita Daily Consumption



Per Capita Daily Calorie Intake From Selected Food Items ⁰⁰⁻⁰²

Rice	14
Wheat	283
Maize	26
Sorghum	716
Potatoes	1
Cassava	1
Sugar	180
Soybean Oil	-
Palm Oil	10
Milk	298
Anim.Fats(Raw&Butter)	30
Eggs	5
Pig meat	-
Poultry Meat	3
Bovine Meat	57
Sheep & Goats Meat	47

Source of Dietary Energy Consumption % ⁰⁰⁻⁰²



Food Balance ⁰⁰⁻⁰² (1000Tonnes)

Food Groups	Production (+)	Exports (-)	Imports (+)	Seed, Feed, Other Uses (-)	Consumption (=)
Cereals	4 194	34	1 240	935	4 465
Veg.oils	216	9	27	12	222
Sugar&Sw.	697	82	67	80	602
Roots&Tub.	170	-	1	20	152
Meat	685	8	-	0	677
Milk	4 976	1	87	207	4 855

Time reference= ⁹⁹⁻⁰¹:1999-2001, ⁰⁰:2000, ⁰²:2002, ⁰⁰⁻⁰²:2000-2002, ⁰³:2003, ⁰⁴:2004, ^{ly}:Latest Available Year