



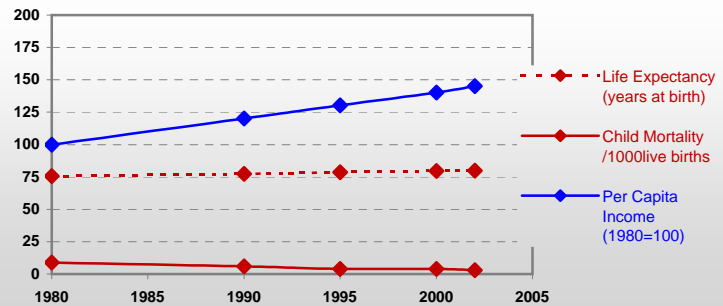
Country profiles

Sweden



General / Welfare

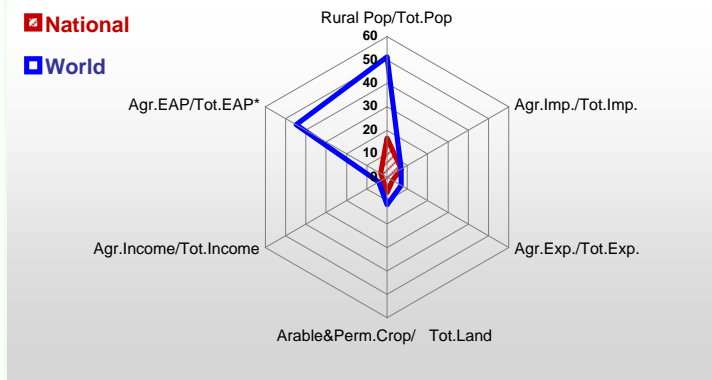
| | |
|---|----------|
| Population ^{04 *} | 8 886 |
| Per Capita Income ^{02 **} | 33 665 |
| Per Capita Agricultural Income ^{02**} | 20 625 |
| Total Exports ^{02 ****} | 81 534 |
| Total Imports ^{02 ****} | 66 983 |
| Agric. External Assistance ^{99-01 ***} | -191 315 |
| Food Consumption Inequality (G) ^{ly} | 0,11 |
| Income Inequality (G) ^{ly} | 0,25 |
| Land Inequality (G) ^{ly} | 0,32 |
| Undernourished Population % ⁰⁰⁻⁰² | < 2.5 |



* 1000 ** \$ **** Million \$ --- (G): Gini Coefficient --- Income refers to GDP at 1995 Constant Prices

Agriculture In The Economy^{ly}

Resources

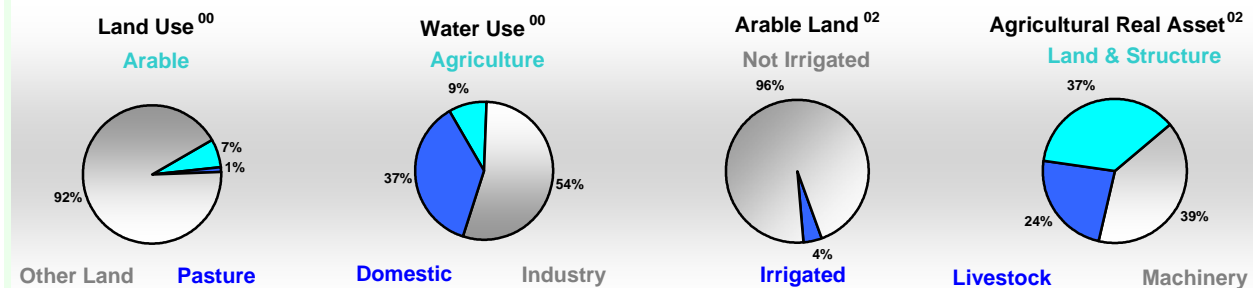


| | |
|---|---------|
| Arable Land ^{00 *} | 2 706 |
| Permanent Crops ^{00 *} | 3 |
| Pasture ^{00 *} | 447 |
| Cattle & Buffaloes ^{03 **} | 1 612 |
| Sheep & Goats ^{03 **} | 451 |
| Tractors ^{02 *} | 62 |
| Harvesters&Threshers ^{02 *} | 15 |
| Fertilizers Production ^{02 ***} | 86 900 |
| Fertilizers Consumption ^{02 ***} | 268 000 |
| Rainfall Index ^{02 (mm)} | 561 |

* EAP: Economically Active Population

* 1000ha ** 1000heads *** Tonnes N,P₂O₅,K₂O

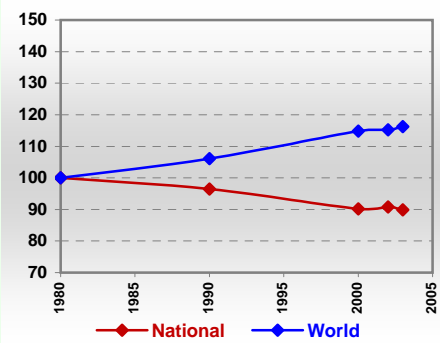
Resources Distribution



Production

| | | | |
|-----------------------------------|--------|---------------------------------|--------|
| Agriculture^{03 *} | | Pulpwd.,Rnd&Split ^{**} | 26 200 |
| Cereals | 5 352 | Roundwood ^{**} | 67 500 |
| Meat | 547 | Log:Saw&Veneer ^{**} | 34 900 |
| Fruits & Vegetables | 310 | Sawnwood ^{**} | 16 560 |
| Roots & Tubers | 857 | Wood Charcoal [*] | 1 |
| Pulses | 80 | Woodfuel ^{**} | 5 900 |
| Oilseeds & Nuts | 52 | Wood Pulp [*] | 11 382 |
| Sugar Crops | 2 484 | Wood-based Panels ^{**} | 850 |
| Tobacco | - | Fisheries^{02 *} | |
| Fibre Crops | - | Pelagic | 190 |
| Forestry⁰² | | Freshwater | 8 |
| Indust.Roundwood ^{**} | 61 600 | Demersal | 98 |
| Paper, Paperboard [*] | 10 724 | Molluscs | 1 |

Per Capita Agricultural Production Index



* 1000Tonnes ** 1000m³

Time reference= ⁹⁹⁻⁰¹:1999-2001, ⁰⁰:2000, ⁰²:2002, ⁰⁰⁻⁰²:2000-2002, ⁰³:2003, ⁰⁴:2004, ^{ly}:Latest Available Year

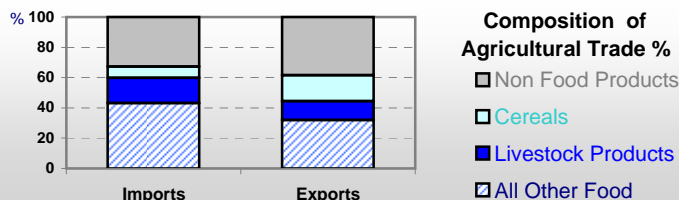


Country profiles

Sweden

Trade ⁰²

| | |
|--------------------------------|-------|
| Agricultural Imports * | 4 614 |
| % 4 Major Imports in Agr.Imp | 21 |
| % Agr. Imports in Tot. Imports | 7 |
| Fishery Imports * | 804 |
| Forestry Imports * | 1 513 |
| Agricultural Exports * | 2 236 |
| % 4 Major Exports in Agr.Exp. | 4 |
| % Agr. Exports in Tot.Exports | 3 |
| Fishery Exports * | 562 |
| Forestry Exports * | 9 230 |



Trade Partners & Products

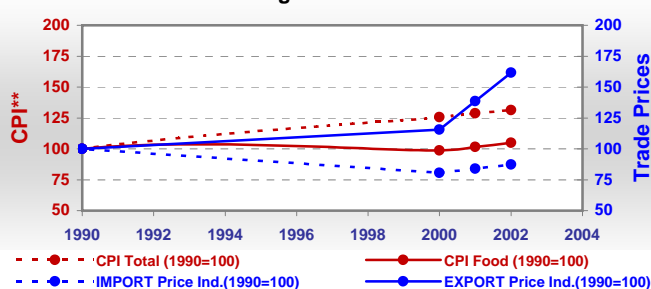
| | | | |
|-----------------------------|-------------|-------------|--------------|
| Major Import Partner | Denmark | Netherlands | Germany |
| Major Export Partner | USA | Finland | Norway |
| Major Imports | Wine | Food Prep | Bananas |
| Major Exports | Bev Dis Alc | Food Prep | Choc Prod Ns |

* Million \$

Prices

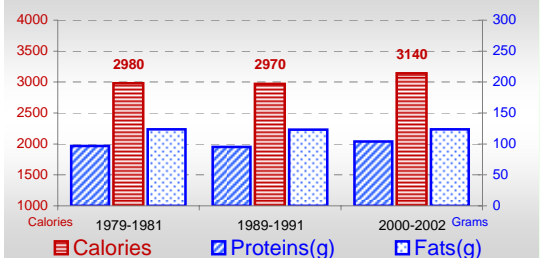
| Producer Prices ⁰⁰⁻⁰² | \$* | \$ Green * |
|----------------------------------|-----|------------|
| Wheat | 102 | 98 |
| Rice | - | - |
| Maize | - | - |
| Soybean | - | - |
| Coffee | - | - |
| Tobacco | - | - |
| Cow Milk | 304 | 292 |
| Cattle (Live Weight) | 954 | 916 |
| Pig (Live Weight) | 780 | 748 |
| Chicken (Live Weight) | 689 | 661 |

Consumer and Agricultural Trade Price Indices

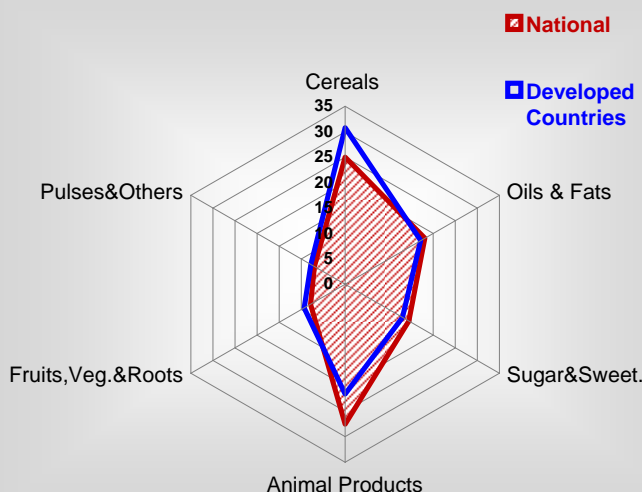


Consumption

Per Capita Daily Consumption



Source of Dietary Energy Consumption % ⁰⁰⁻⁰²



Per Capita Daily Calorie Intake From Selected Food Items ⁰⁰⁻⁰²

| | |
|-----------------------|-----|
| Rice | 46 |
| Wheat | 614 |
| Maize | 11 |
| Sorghum | - |
| Potatoes | 93 |
| Cassava | - |
| Sugar | 439 |
| Soybean Oil | 32 |
| Palm Oil | 4 |
| Milk | 416 |
| Anim.Fats(Raw&Butter) | 144 |
| Eggs | 43 |
| Pig Meat | 194 |
| Poultry Meat | 40 |
| Bovine Meat | 63 |
| Sheep & Goats Meat | 6 |

Food Balance ⁰⁰⁻⁰² (1000Tonnes)

| Food Groups | Production (+) | Exports (-) | Imports (+) | Seed, Feed, Other Uses (-) | Consumption (=) |
|-------------|----------------|-------------|-------------|----------------------------|-----------------|
| Cereals | 5 508 | 1 575 | 466 | 3 490 | 909 |
| Veg.oils | 109 | 216 | 219 | -27 | 139 |
| Sugar&Sw. | 456 | 137 | 102 | 9 | 412 |
| Roots&Tub. | 940 | 35 | 298 | 730 | 473 |
| Meat | 547 | 39 | 139 | 21 | 626 |
| Milk | 3 271 | 331 | 458 | 230 | 3 168 |

Time reference= ⁹⁹⁻⁰¹:1999-2001, ⁰⁰:2000, ⁰²:2002, ⁰⁰⁻⁰²:2000-2002, ⁰³:2003, ⁰⁴:2004, ^{ly}:Latest Available Year