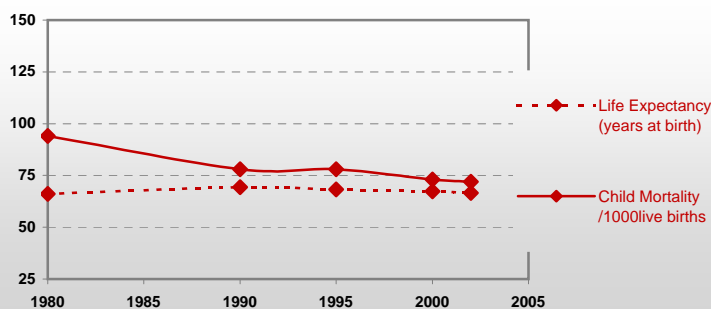


Tajikistan



General / Welfare

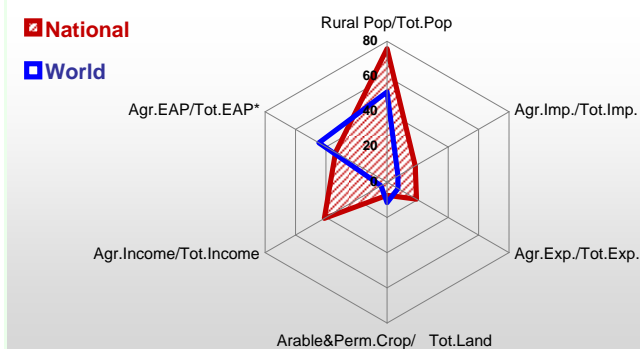
Population ^{04 *}	6 298
Per Capita Income ^{02 **}	237
Per Capita Agricultural Income ^{02**}	303
Total Exports ^{02 ****}	737
Total Imports ^{02 ****}	721
Agric. External Assistance ^{99-01 ***}	81 340
Food Consumption Inequality (G) ^{ly}	0,13
Income Inequality (G) ^{ly}	0,35
Land Inequality (G) ^{ly}	-
Undernourished Population % ⁰⁰⁻⁰²	61



* 1000 ** \$ **** Million \$ --- (G): Gini Coefficient --- Income refers to GDP at 1995 Constant Prices

Agriculture In The Economy^{ly}

Resources

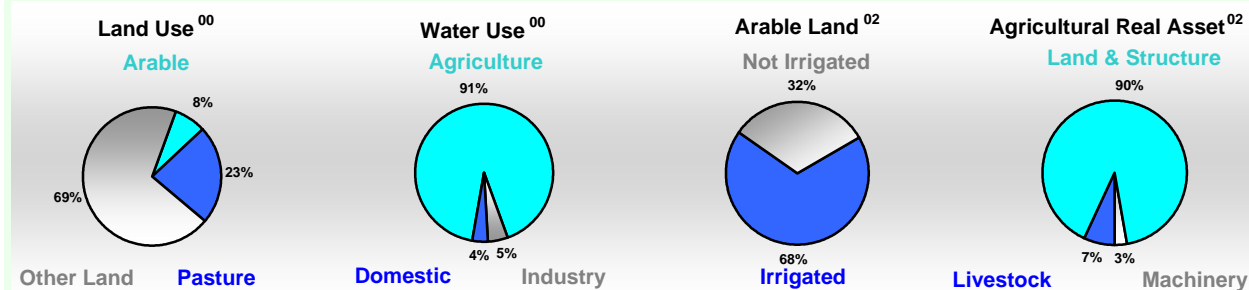


Arable Land ^{00 *}	930
Permanent Crops ^{00 *}	128
Pasture ^{00 *}	3 254
Cattle & Buffaloes ^{03 **}	1 136
Sheep & Goats ^{03 **}	2 433
Tractors ^{02 *}	22
Harvesters&Threshers ^{02 *}	1
Fertilizers Production ^{02 ***}	12 200
Fertilizers Consumption ^{02 ***}	27 900
Rainfall Index ^{02 (mm)}	440

* EAP: Economically Active Population

* 1000ha ** 1000heads *** Tonnes N,P₂O₅,K₂O

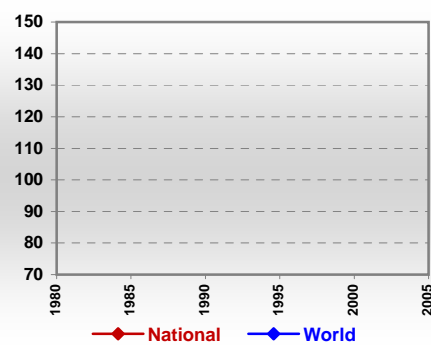
Resources Distribution



Production

Agriculture ^{03 *}		Forestry ⁰²		Fisheries ^{02 *}	
Cereals	868	Indust.Roundwood ^{**}	-	Pulpwd.,Rnd&Split ^{**}	-
Meat	45	Paper, Paperboard [*]	-	Roundwood ^{**}	-
Fruits & Vegetables	755			Log:Saw&Veneer ^{**}	-
Roots & Tubers	473			Sawnwood ^{**}	-
Pulses	17			Wood Charcoal [*]	-
Oilseeds & Nuts	57			Woodfuel ^{**}	-
Sugar Crops	-			Wood Pulp [*]	-
Tobacco	7			Wood-based Panels ^{**}	-
Fibre Crops	170				
				Freshwater	0
				Demersal	-
				Molluscs	-
				Pelagic	-

Per Capita Agricultural Production Index



* 1000Tonnes ** 1000m³

Time reference= ⁹⁹⁻⁰¹:1999-2001, ⁰⁰:2000, ⁰²:2002, ⁰⁰⁻⁰²:2000-2002, ⁰³:2003, ⁰⁴:2004, ^{ly}:Latest Available Year



Country profiles

Tajikistan

Trade ⁰²

Agricultural Imports *	133
% 4 Major Imports in Agr.Imp	64
% Agr. Imports in Tot. Imports	19
Fishery Imports *	0
Forestry Imports *	4
Agricultural Exports *	141
% 4 Major Exports in Agr.Exp.	90
% Agr. Exports in Tot.Exports	19
Fishery Exports *	-
Forestry Exports *	0



Trade Partners & Products

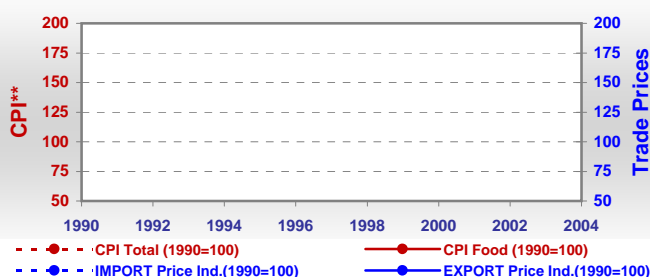
Major Import Partner			
Major Export Partner			
Major Imports	Beef Veal	Sugar,C. Raw	Wheat
Major Exports	Cotton Lint	Fruit Juice	Onions, Dry

* Million \$

Prices

Producer Prices ⁰⁰⁻⁰²	\$*	\$ Green *
Wheat	-	-
Rice	-	-
Maize	-	-
Soybean	-	-
Coffee	-	-
Tobacco	-	-
Cow Milk	-	-
Cattle (Live Weight)	-	-
Pig (Live Weight)	-	-
Chicken (Live Weight)	-	-

Consumer and Agricultural Trade Price Indices

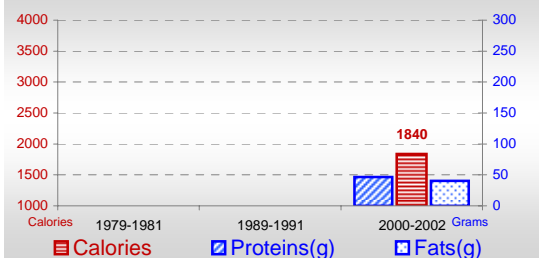


* per Tonne

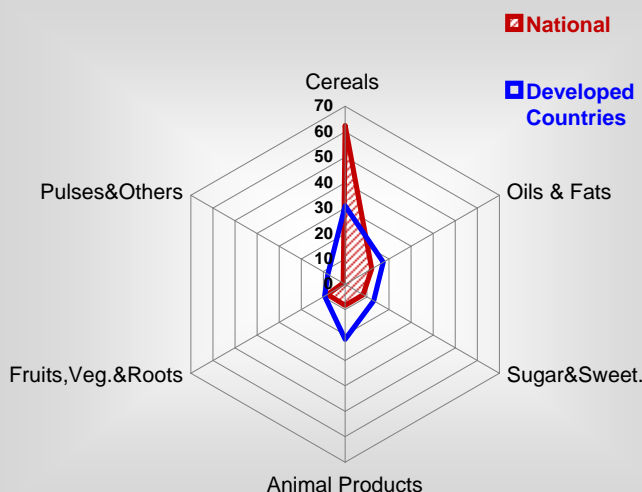
** CPI : Consumer Price Index

Consumption

Per Capita Daily Consumption



Source of Dietary Energy Consumption % ⁰⁰⁻⁰²



Per Capita Daily Calorie Intake From Selected Food Items ⁰⁰⁻⁰²

Rice	59
Wheat	1058
Maize	-
Sorghum	-
Potatoes	64
Cassava	-
Sugar	151
Soybean Oil	43
Palm Oil	-
Milk	94
Anim.Fats(Raw&Butter)	-
Eggs	2
Pig Meat	1
Poultry Meat	1
Bovine Meat	37
Sheep & Goats Meat	17

Food Balance ^{00-02 (1000Tonnes)}

Food Groups	Production (+)	Exports (-)	Imports (+)	Seed, Feed, Other Uses (-)	Consumption (=)
Cereals	551	1	444	92	902
Veg.oils	27	-	24	-5	56
Sugar&Sw.	-	-	62	-32	94
Roots&Tub.	326	0	1	112	215
Meat	31	-	23	0	54
Milk	337	-	7	7	337

Time reference= ⁹⁹⁻⁰¹:1999-2001, ⁰⁰:2000, ⁰²:2002, ⁰⁰⁻⁰²:2000-2002, ⁰³:2003, ⁰⁴:2004, ^{ly}:Latest Available Year