



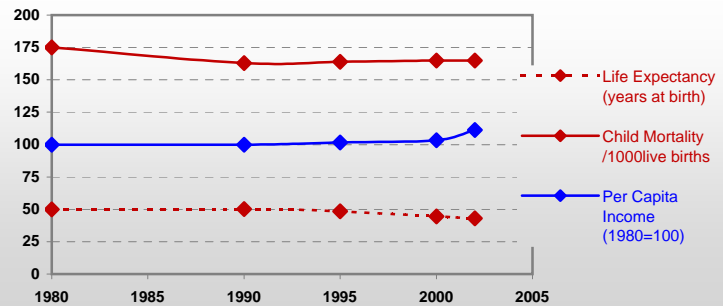
Country profiles

Tanzania



General / Welfare

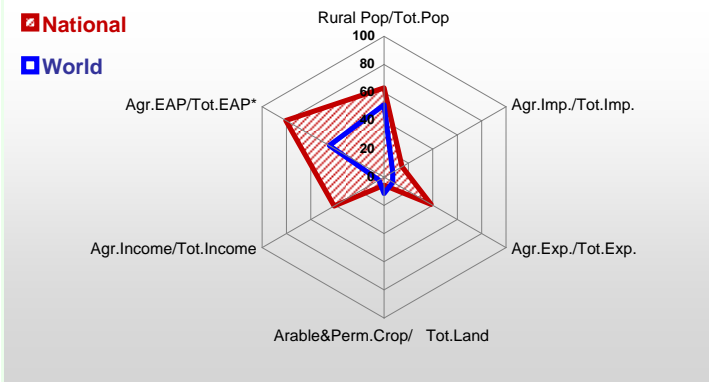
| | |
|---|---------|
| Population ^{04 *} | 37 671 |
| Per Capita Income ^{02 **} | 207 |
| Per Capita Agricultural Income ^{02**} | 106 |
| Total Exports ^{02 ****} | 875 |
| Total Imports ^{02 ****} | 1 687 |
| Agric. External Assistance ^{99-01 ***} | 202 044 |
| Food Consumption Inequality (G) ^{ly} | 0,16 |
| Income Inequality (G) ^{ly} | 0,38 |
| Land Inequality (G) ^{ly} | - |
| Undernourished Population % ⁰⁰⁻⁰² | 44 |



* 1000 ** \$ *** 1000 \$ **** Million \$ --- (G) : Gini Coefficient --- Income refers to GDP at 1995 Constant Prices

Agriculture In The Economy^{ly}

Resources

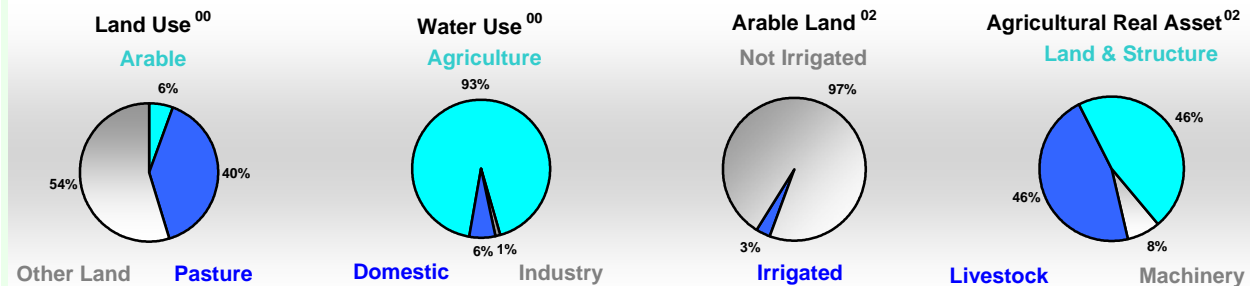


| | |
|---|--------|
| Arable Land ^{00 *} | 4 000 |
| Permanent Crops ^{00 *} | 1 000 |
| Pasture ^{00 *} | 35 000 |
| Cattle & Buffaloes ^{03 **} | 17 704 |
| Sheep & Goats ^{03 **} | 16 077 |
| Tractors ^{02 *} | 2 |
| Harvesters&Threshers ^{02 *} | - |
| Fertilizers Production ^{02 ***} | - |
| Fertilizers Consumption ^{02 ***} | 7 148 |
| Rainfall Index ^{02 (mm)} | 1 116 |

* EAP : Economically Active Population

* 1000ha ** 1000heads *** Tonnes N,P₂O₅,K₂O

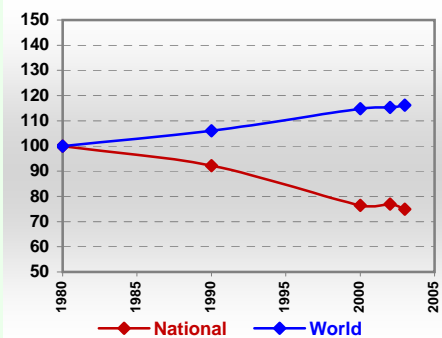
Resources Distribution



Production

| Agriculture ^{03 *} | | Forestry ⁰² | | Fisheries ^{02 *} | |
|-----------------------------|-------|------------------------|-------|---------------------------|--------|
| Cereals | 4 046 | Indust.Roundwood ** | 2 314 | Pulpwd.,Rnd&Split ** | 153 |
| Meat | 361 | Paper, Paperboard * | 25 | Roundwood ** | 23 439 |
| Fruits & Vegetables | 2 515 | | | Log:Saw&Veneer ** | 317 |
| Roots & Tubers | 8 091 | | | Sawnwood ** | 24 |
| Pulses | 445 | | | Wood Charcoal * | 1 243 |
| Oilseeds & Nuts | 263 | | | Woodfuel ** | 21 125 |
| Sugar Crops | 1 600 | | | Wood Pulp * | 54 |
| Tobacco | 25 | | | Wood-based Panels ** | 4 |
| Fibre Crops | 85 | | | | |
| | | | | Pelagic | 25 |
| | | | | Freshwater | 274 |
| | | | | Demersal | 20 |
| | | | | Molluscs | - |

Per Capita Agricultural Production Index



* 1000Tonnes ** 1000m³

Time reference= ⁹⁹⁻⁰¹:1999-2001, ⁰⁰:2000, ⁰²:2002, ⁰⁰⁻⁰²:2000-2002, ⁰³:2003, ⁰⁴:2004, ^{ly}:Latest Available Year

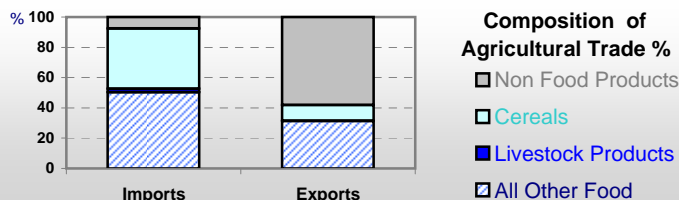


Country profiles

Tanzania

Trade ⁰²

| | |
|--------------------------------|-----|
| Agricultural Imports * | 250 |
| % 4 Major Imports in Agr.Imp | 26 |
| % Agr. Imports in Tot. Imports | 15 |
| Fishery Imports * | 0 |
| Forestry Imports * | 5 |
| Agricultural Exports * | 337 |
| % 4 Major Exports in Agr.Exp. | 22 |
| % Agr. Exports in Tot.Exports | 39 |
| Fishery Exports * | 117 |
| Forestry Exports * | 3 |



Trade Partners & Products

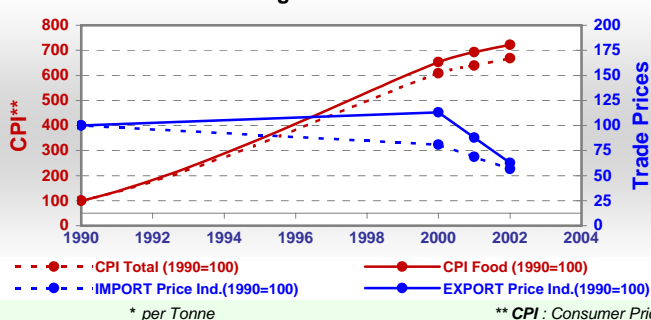
| | | | |
|-----------------------------|-----------|-------------|---------------|
| Major Import Partner | Indonesia | Australia | South Africa |
| Major Export Partner | India | UK | Kenya |
| Major Imports | Wheat | Oil of Palm | Sugar Refind |
| Major Exports | Tobacco | Cashew Nuts | Coffee, Green |

* Million \$

Prices

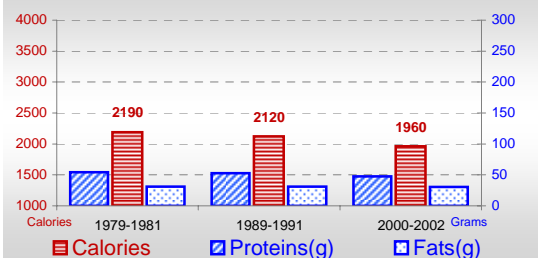
| Producer Prices ⁰⁰⁻⁰² | \$* | \$ Green * |
|----------------------------------|-----|------------|
| Wheat | - | - |
| Rice | - | - |
| Maize | - | - |
| Soybean | - | - |
| Coffee | - | - |
| Tobacco | - | - |
| Cow Milk | - | - |
| Cattle (Live Weight) | - | - |
| Pig (Live Weight) | - | - |
| Chicken (Live Weight) | - | - |

Consumer and Agricultural Trade Price Indices

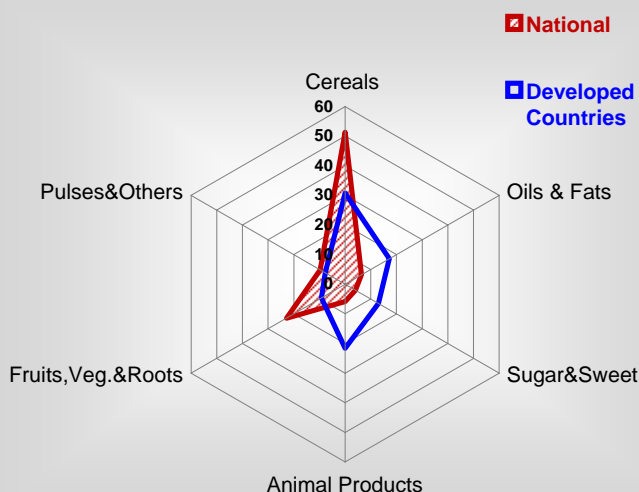


Consumption

Per Capita Daily Consumption



Source of Dietary Energy Consumption % ⁰⁰⁻⁰²



Per Capita Daily Calorie Intake From Selected Food Items ⁰⁰⁻⁰²

| | |
|-----------------------|-----|
| Rice | 158 |
| Wheat | 81 |
| Maize | 649 |
| Sorghum | 81 |
| Potatoes | 11 |
| Cassava | 302 |
| Sugar | 71 |
| Soybean Oil | 2 |
| Palm Oil | 40 |
| Milk | 41 |
| Anim.Fats(Raw&Butter) | 11 |
| Eggs | 3 |
| Pig Meat | 4 |
| Poultry Meat | 4 |
| Bovine Meat | 34 |
| Sheep & Goats Meat | 5 |

Food Balance ⁰⁰⁻⁰² (1000Tonnes)

| Food Groups | Production (+) | Exports (-) | Imports (+) | Seed, Feed, Other Uses (-) | Consumption (=) |
|-------------|----------------|-------------|-------------|----------------------------|-----------------|
| Cereals | 4 158 | 154 | 605 | 606 | 4 003 |
| Veg.oils | 101 | 8 | 170 | 96 | 167 |
| Sugar&Sw. | 169 | 29 | 119 | -27 | 286 |
| Roots&Tub. | 8 117 | 9 | 16 | 1 413 | 6 711 |
| Meat | 346 | - | 1 | 1 | 346 |
| Milk | 884 | 1 | 23 | 23 | 883 |

Time reference= ⁹⁹⁻⁰¹:1999-2001, ⁰⁰:2000, ⁰²:2002, ⁰⁰⁻⁰²:2000-2002, ⁰³:2003, ⁰⁴:2004, ^{ly}:Latest Available Year