



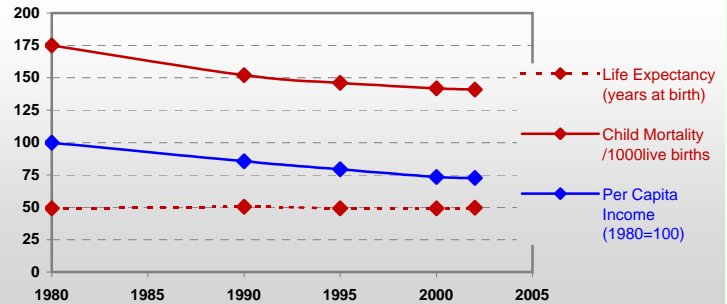
# Country profiles

## Togo



### General / Welfare

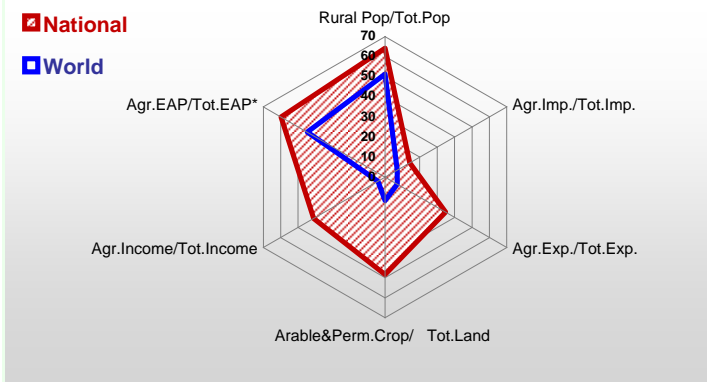
Population <sup>04 *</sup>	5 017
Per Capita Income <sup>02 **</sup>	320
Per Capita Agricultural Income <sup>02**</sup>	220
Total Exports <sup>02 ****</sup>	427
Total Imports <sup>02 ****</sup>	591
Agric. External Assistance <sup>99-01 ***</sup>	11 764
Food Consumption Inequality (G) <sup>ly</sup>	0,16
Income Inequality (G) <sup>ly</sup>	-
Land Inequality (G) <sup>ly</sup>	-
Undernourished Population % <sup>00-02</sup>	26



\* 1000 \*\* \$ \*\*\*\* Million \$ --- (G) : Gini Coefficient --- Income refers to GDP at 1995 Constant Prices

### Agriculture In The Economy <sup>ly</sup>

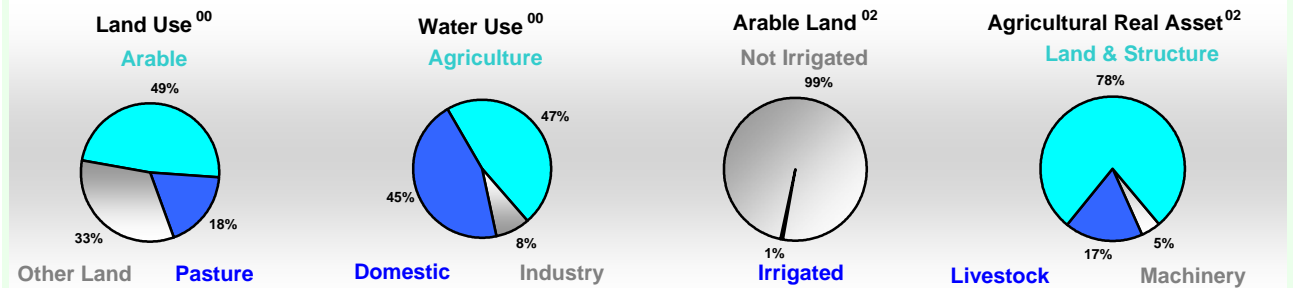
### Resources



Arable Land <sup>00 *</sup>	2 510
Permanent Crops <sup>00 *</sup>	120
Pasture <sup>00 *</sup>	1 000
Cattle & Buffaloes <sup>03 **</sup>	279
Sheep & Goats <sup>03 **</sup>	3 270
Tractors <sup>02 *</sup>	0
Harvesters&Threshers <sup>02 *</sup>	-
Fertilizers Production <sup>02 ***</sup>	-
Fertilizers Consumption <sup>02 ***</sup>	17 055
Rainfall Index <sup>02 (mm)</sup>	1 117

\* EAP : Economically Active Population --- \* 1000ha \*\* 1000heads \*\*\* Tonnes N,P<sub>2</sub>O<sub>5</sub>,K<sub>2</sub>O

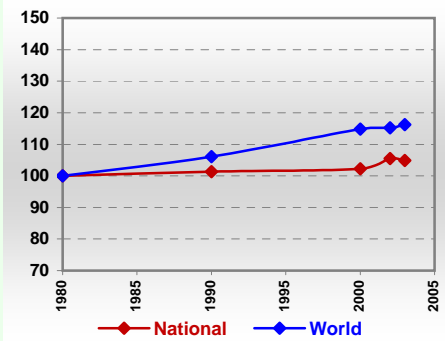
### Resources Distribution



### Production

<b>Agriculture <sup>03 *</sup></b>	<b>Pulpwd.,Rnd&amp;Split <sup>**</sup></b>	-	
Cereals	816	Roundwood <sup>**</sup>	5 808
Meat	33	Log:Saw&Veneer <sup>**</sup>	43
Fruits & Vegetables	187	Sawnwood <sup>**</sup>	13
Roots & Tubers	1 321	Wood Charcoal <sup>*</sup>	280
Pulses	50	Woodfuel <sup>**</sup>	5 600
Oilseeds & Nuts	47	Wood Pulp <sup>*</sup>	-
Sugar Crops	-	Wood-based Panels <sup>**</sup>	-
Tobacco	2		
Fibre Crops	71	<b>Fisheries <sup>02 *</sup></b>	
		Pelagic	13
		Freshwater	7
		Demersal	2
		Molluscs	-
<b>Forestry <sup>02</sup></b>			
Indust.Roundwood <sup>**</sup>	208		
Paper, Paperboard <sup>*</sup>	-		

### Per Capita Agricultural Production Index



\* 1000Tonnes \*\* 1000m<sup>3</sup>

Time reference = <sup>99-01</sup> :1999-2001, <sup>00</sup> :2000, <sup>02</sup> :2002, <sup>00-02</sup> :2000-2002, <sup>03</sup> :2003, <sup>04</sup> :2004, <sup>ly</sup> :Latest Available Year

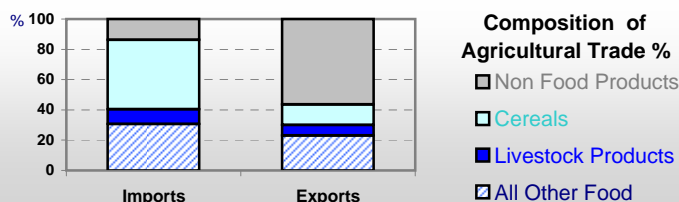


# Country profiles

## Togo

### Trade <sup>02</sup>

Agricultural Imports *	83
% 4 Major Imports in Agr.Imp	47
% Agr. Imports in Tot. Imports	14
Fishery Imports *	7
Forestry Imports *	3
Agricultural Exports *	86
% 4 Major Exports in Agr.Exp.	42
% Agr. Exports in Tot.Exports	35
Fishery Exports *	10
Forestry Exports *	1



### Trade Partners & Products

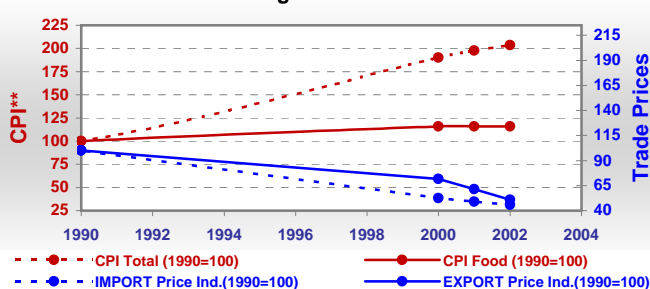
<b>Major Import Partner</b>	Canada	France	Belgium
<b>Major Export Partner</b>	China	Benin	Niger
<b>Major Imports</b>	Wheat	Oil of Palm	Cigarettes
<b>Major Exports</b>	Cotton Lint	Cotton Cardd	Flour Wheat

\* Million \$

### Prices

Producer Prices <sup>00-02</sup>	\$*	\$ Green *
Wheat	-	-
Rice	179	211
Maize	131	154
Soybean	-	-
Coffee	436	513
Tobacco	548	646
Cow Milk	528	622
Cattle (Live Weight)	580	684
Pig (Live Weight)	906	1 068
Chicken (Live Weight)	1 834	2 162

### Consumer and Agricultural Trade Price Indices

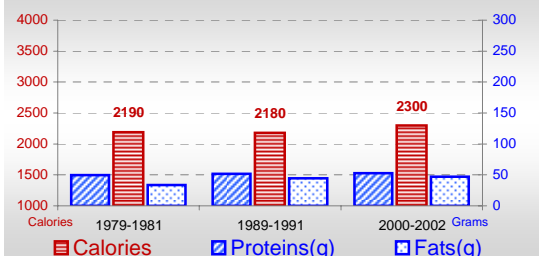


\* per Tonne

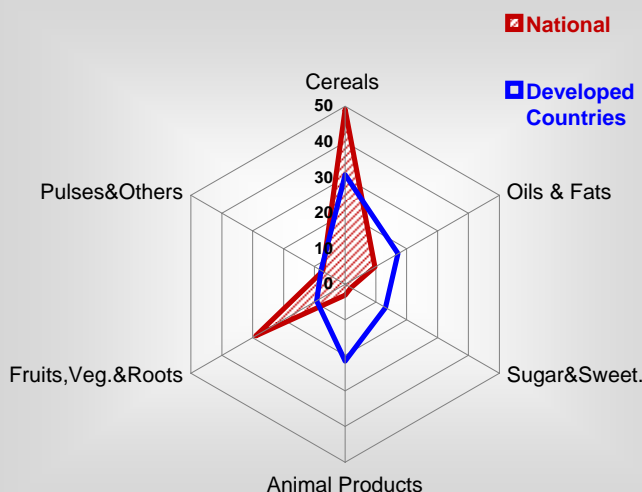
\*\* CPI : Consumer Price Index

### Consumption

#### Per Capita Daily Consumption



#### Source of Dietary Energy Consumption % <sup>00-02</sup>



#### Per Capita Daily Calorie Intake From Selected Food Items <sup>00-02</sup>

Rice	197
Wheat	119
Maize	579
Sorghum	176
Potatoes	1
Cassava	379
Sugar	43
Soybean Oil	2
Palm Oil	98
Milk	11
Anim.Fats(Raw&Butter)	4
Eggs	3
Pig Meat	9
Poultry Meat	13
Bovine Meat	6
Sheep & Goats Meat	7

#### Food Balance <sup>00-02</sup> (1000Tonnes)

Food Groups	Production (+)	Exports (-)	Imports (+)	Seed, Feed, Other Uses (-)	Consumption (=)
Cereals	730	54	180	221	635
Veg.oils	28	8	27	5	42
Sugar&Sw.	-	5	25	0	20
Roots&Tub.	1 285	2	2	252	1 033
Meat	32	1	9	0	40
Milk	9	7	22	-3	27

Time reference= <sup>99-01</sup>:1999-2001, <sup>00</sup>:2000, <sup>02</sup>:2002, <sup>00-02</sup>:2000-2002, <sup>03</sup>:2003, <sup>04</sup>:2004, <sup>ly</sup>:Latest Available Year