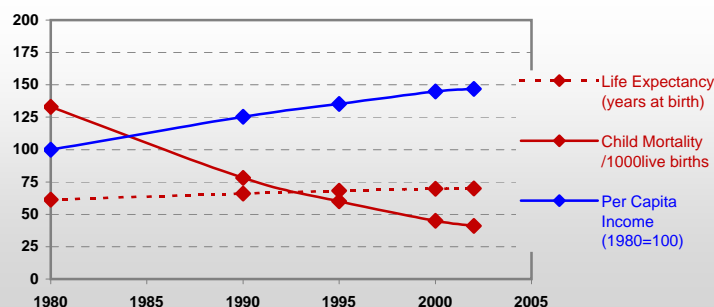


Turkey



General / Welfare

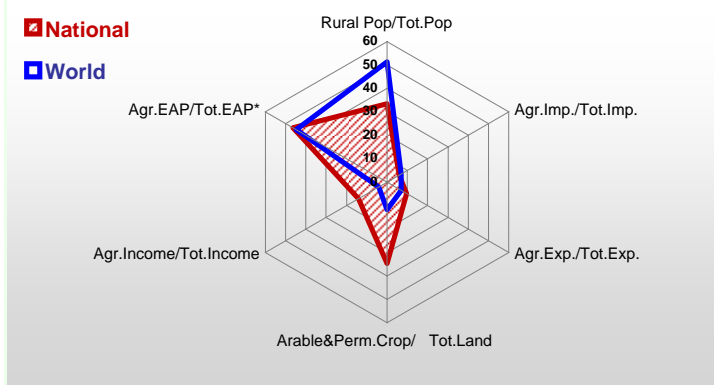
Population ^{04 *}	72 320
Per Capita Income ^{02 **}	2 942
Per Capita Agricultural Income ^{02**}	1 341
Total Exports ^{02 ****}	36 059
Total Imports ^{02 ****}	51 554
Agric. External Assistance ^{99-01 ***}	635 470
Food Consumption Inequality (G) ^{ly}	0,15
Income Inequality (G) ^{ly}	0,40
Land Inequality (G) ^{ly}	0,61
Undernourished Population % ⁰⁰⁻⁰²	3



* 1000 ** \$ *** 1000 \$ **** Million \$ --- (G) : Gini Coefficient --- Income refers to GDP at 1995 Constant Prices

Agriculture In The Economy^{ly}

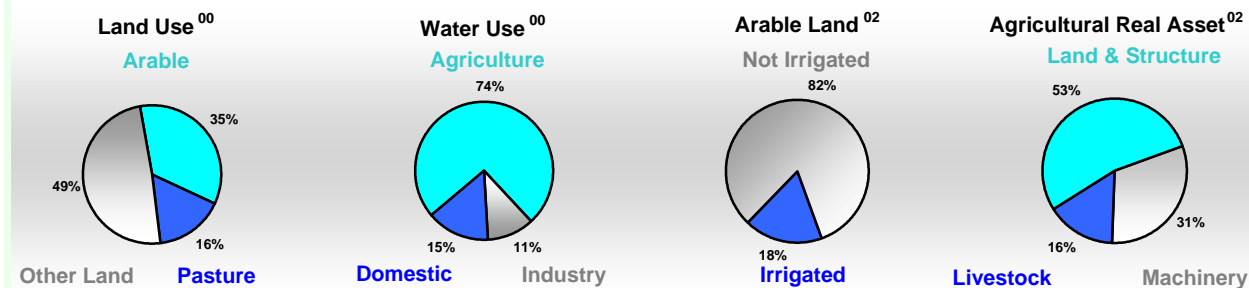
Resources



Arable Land ^{00 *}	24 138
Permanent Crops ^{00 *}	2 534
Pasture ^{00 *}	12 378
Cattle & Buffaloes ^{03 **}	10 564
Sheep & Goats ^{03 **}	34 000
Tractors ^{02 *}	37
Harvesters&Threshers ^{02 *}	0
Fertilizers Production ^{02 ***}	935 772
Fertilizers Consumption ^{02 ***}	1 743 173
Rainfall Index ^{02 (mm)}	614

* EAP : Economically Active Population --- * 1000ha ** 1000heads *** Tonnes N,P₂O₅,K₂O

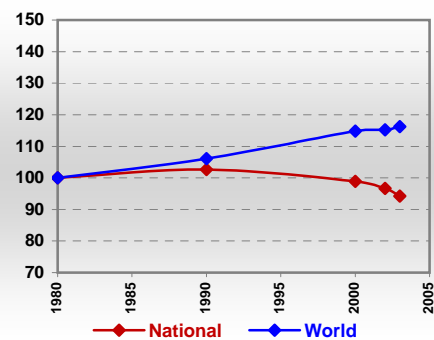
Resources Distribution



Production

Agriculture^{03 *}		Cereals	30 798	Pulpwd.,Rnd&Split ^{**}	3 776
Meat	1 493	Roundwood ^{**}	18 465	Log:Saw&Veneer ^{**}	5 606
Fruits & Vegetables	36 871	Sawnwood ^{**}	5 732	Wood Charcoal [*]	-
Roots & Tubers	5 300	Woodfuel ^{**}	7 160	Wood Pulp [*]	225
Pulses	1 569	Wood-based Panels ^{**}	2 656	Fisheries^{02 *}	
Oilseeds & Nuts	1 590	Pelagic	447	Freshwater	58
Sugar Crops	12 623	Demersal	86	Molluscs	24
Tobacco	152				
Fibre Crops	894				
Forestry⁰²					
Indust.Roundwood ^{**}	11 305				
Paper, Paperboard [*]	1 643				

Per Capita Agricultural Production Index



* 1000Tonnes ** 1000m³

Time reference= ⁹⁹⁻⁰¹ :1999-2001, ⁰⁰ :2000, ⁰² :2002, ⁰⁰⁻⁰² :2000-2002, ⁰³ :2003, ⁰⁴ :2004, ^{ly} :Latest Available Year

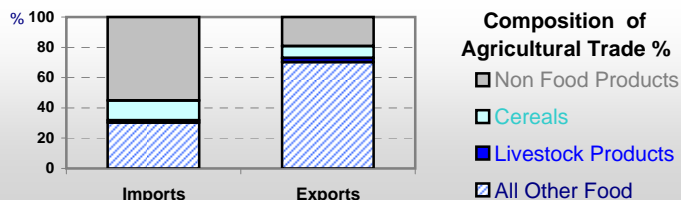


Country profiles

Turkey

Trade ⁰²

Agricultural Imports *	3 070
% 4 Major Imports in Agr.Imp	7
% Agr. Imports in Tot. Imports	6
Fishery Imports *	29
Forestry Imports *	1 052
Agricultural Exports *	3 476
% 4 Major Exports in Agr.Exp.	24
% Agr. Exports in Tot.Exports	10
Fishery Exports *	116
Forestry Exports *	181



Trade Partners & Products

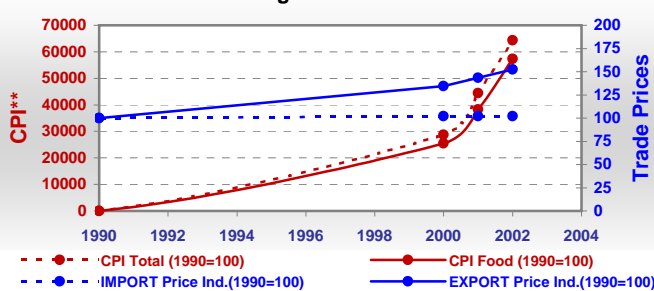
Major Import Partner	USA	Germany	Greece
Major Export Partner	Germany	USA	Italy
Major Imports	Cotton Lint	Skinwool Sh	Tobacco
Major Exports	Hazelnuts Sh	Tobacco	Preprd Nuts

* Million \$

Prices

Producer Prices ⁰⁰⁻⁰²	\$*	\$ Green *
Wheat	150	133
Rice	359	314
Maize	157	139
Soybean	214	188
Coffee	-	-
Tobacco	2 197	1 859
Cow Milk	289	246
Cattle (Live Weight)	1 889	1 570
Pig (Live Weight)	-	-
Chicken (Live Weight)	3 656	3 110

Consumer and Agricultural Trade Price Indices

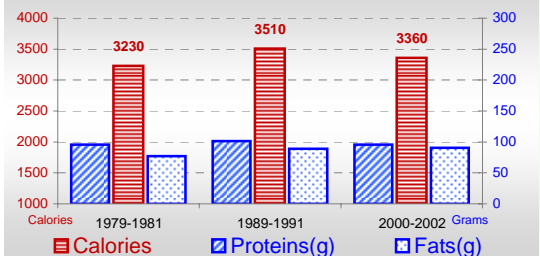


* per Tonne

** CPI : Consumer Price Index

Consumption

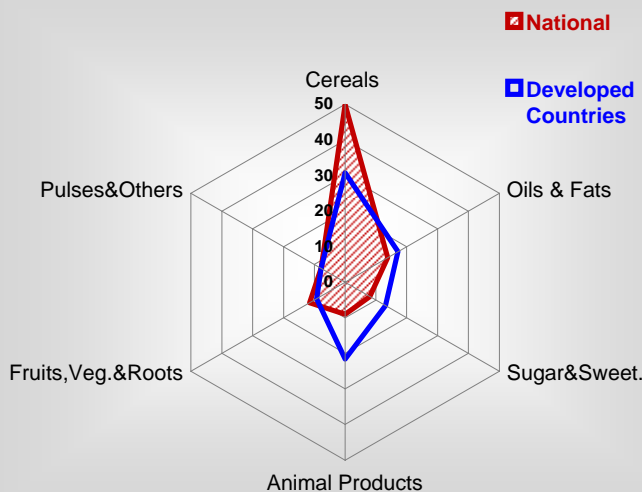
Per Capita Daily Consumption



Per Capita Daily Calorie Intake From Selected Food Items ⁰⁰⁻⁰²

Rice	70
Wheat	1470
Maize	117
Sorghum	-
Potatoes	117
Cassava	-
Sugar	260
Soybean Oil	54
Palm Oil	80
Milk	172
Anim.Fats(Raw&Butter)	35
Eggs	30
Pig Meat	-
Poultry Meat	32
Bovine Meat	17
Sheep & Goats Meat	34

Source of Dietary Energy Consumption % ⁰⁰⁻⁰²



Food Balance ⁰⁰⁻⁰² (1000Tonnes)

Food Groups	Production (+)	Exports (-)	Imports (+)	Seed, Feed, Other Uses (-)	Consumption (=)
Cereals	30 762	1 825	2 191	15 902	15 226
Veg.oils	909	188	756	241	1 236
Sugar&Sw.	2 366	635	23	-160	1 914
Roots&Tub.	5 190	93	219	1 129	4 187
Meat	1 364	17	1	0	1 348
Milk	9 233	19	69	1 741	7 542

Time reference= ⁹⁹⁻⁰¹:1999-2001, ⁰⁰:2000, ⁰²:2002, ⁰⁰⁻⁰²:2000-2002, ⁰³:2003, ⁰⁴:2004, ^{ly}:Latest Available Year