



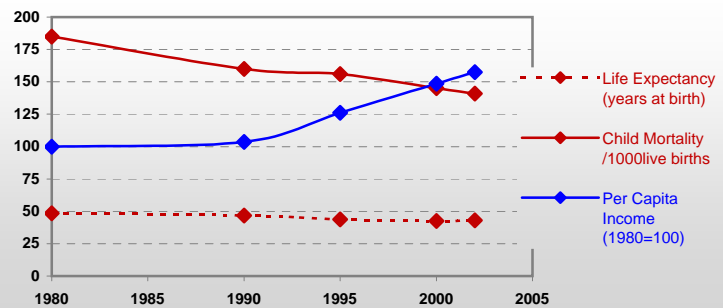
# Country profiles

## Uganda



### General / Welfare

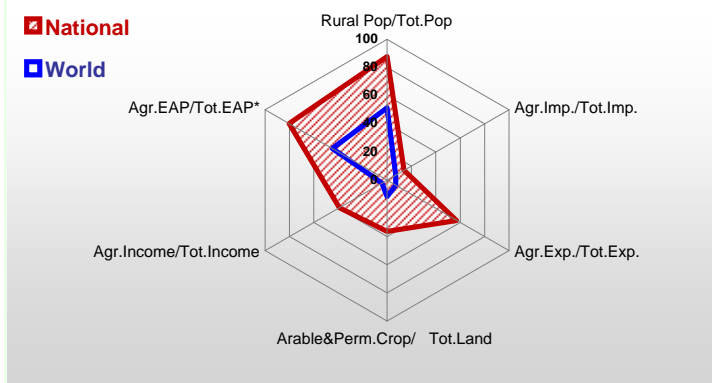
Population <sup>04 *</sup>	26 699
Per Capita Income <sup>02 **</sup>	359
Per Capita Agricultural Income <sup>02**</sup>	176
Total Exports <sup>02 ****</sup>	443
Total Imports <sup>02 ****</sup>	1 111
Agric. External Assistance <sup>99-01 ***</sup>	396 531
Food Consumption Inequality (G) <sup>ly</sup>	0,16
Income Inequality (G) <sup>ly</sup>	0,43
Land Inequality (G) <sup>ly</sup>	0,59
Undernourished Population % <sup>00-02</sup>	19



\* 1000 \*\* \$ \*\*\* 1000 \$ \*\*\*\* Million \$ --- (G): Gini Coefficient --- Income refers to GDP at 1995 Constant Prices

### Agriculture In The Economy<sup>ly</sup>

### Resources

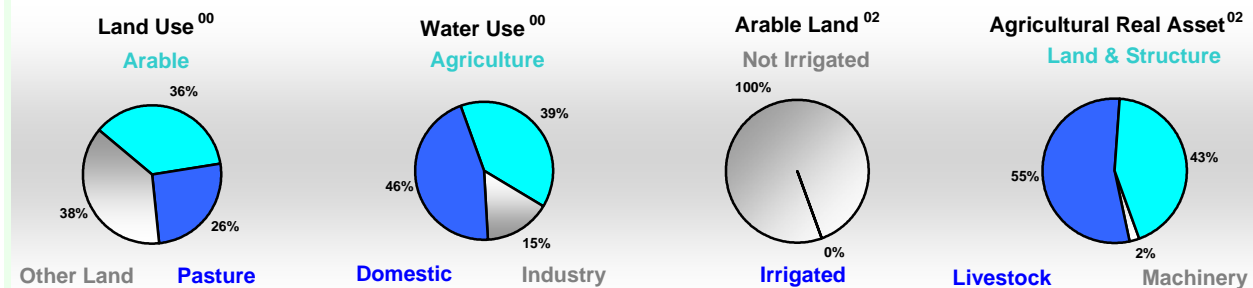


Arable Land <sup>00 *</sup>	5 060
Permanent Crops <sup>00 *</sup>	2 100
Pasture <sup>00 *</sup>	5 112
Cattle & Buffaloes <sup>03 **</sup>	6 100
Sheep & Goats <sup>03 **</sup>	8 002
Tractors <sup>02 *</sup>	1
Harvesters&Threshers <sup>02 *</sup>	0
Fertilizers Production <sup>02 ***</sup>	-
Fertilizers Consumption <sup>02 ***</sup>	9 306
Rainfall Index <sup>02 (mm)</sup>	1 401

\* EAP: Economically Active Population

\* 1000ha \*\* 1000heads \*\*\* Tonnes N,P<sub>2</sub>O<sub>5</sub>,K<sub>2</sub>O

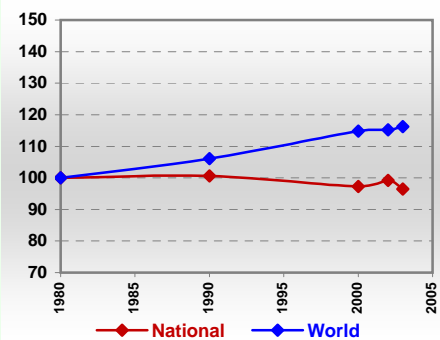
### Resources Distribution



### Production

<b>Agriculture<sup>03 *</sup></b>		
Cereals	2 311	Pulpwd.,Rnd&Split <sup>**</sup>
Meat	293	Roundwood <sup>**</sup>
Fruits & Vegetables	11 224	Log:Saw&Veneer <sup>**</sup>
Roots & Tubers	8 546	Sawnwood <sup>**</sup>
Pulses	698	Wood Charcoal <sup>*</sup>
Oilseeds & Nuts	139	Woodfuel <sup>**</sup>
Sugar Crops	1 600	Wood Pulp <sup>*</sup>
Tobacco	33	Wood-based Panels <sup>**</sup>
Fibre Crops	22	
<b>Forestry<sup>02</sup></b>		<b>Fisheries<sup>02 *</sup></b>
Indust.Roundwood <sup>**</sup>	3 175	Pelagic
Paper, Paperboard <sup>*</sup>	3	Freshwater
		Demersal
		Molluscs

### Per Capita Agricultural Production Index



\* 1000Tonnes \*\* 1000m<sup>3</sup>

Time reference= <sup>99-01</sup>:1999-2001, <sup>00</sup>:2000, <sup>02</sup>:2002, <sup>00-02</sup>:2000-2002, <sup>03</sup>:2003, <sup>04</sup>:2004, <sup>ly</sup>:Latest Available Year

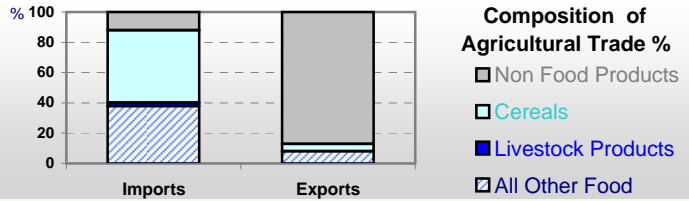


# Country profiles

## Uganda

### Trade <sup>02</sup>

Agricultural Imports *	153
% 4 Major Imports in Agr.Imp	9
% Agr. Imports in Tot. Imports	14
Fishery Imports *	0
Forestry Imports *	2
Agricultural Exports *	252
% 4 Major Exports in Agr.Exp.	70
% Agr. Exports in Tot.Exports	57
Fishery Exports *	86
Forestry Exports *	0



### Trade Partners & Products

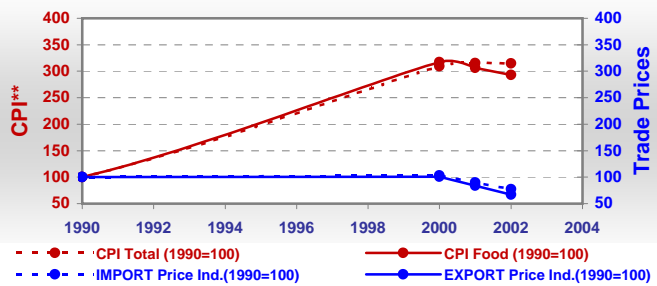
Major Import Partner	Malaysia	Australia	USA
Major Export Partner	Switzerland	Kenya	Netherlands
Major Imports	Wheat	Oil of Palm	Maize
Major Exports	Coffee,Green	Tobacco	Tea

\* Million \$

### Prices

Producer Prices <sup>00-02</sup>	\$*	\$ Green *
Wheat	-	-
Rice	-	-
Maize	-	-
Soybean	-	-
Coffee	-	-
Tobacco	-	-
Cow Milk	-	-
Cattle (Live Weight)	-	-
Pig (Live Weight)	-	-
Chicken (Live Weight)	-	-

### Consumer and Agricultural Trade Price Indices

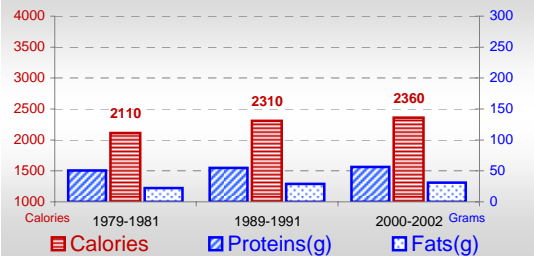


\* per Tonne

\*\* CPI : Consumer Price Index

### Consumption

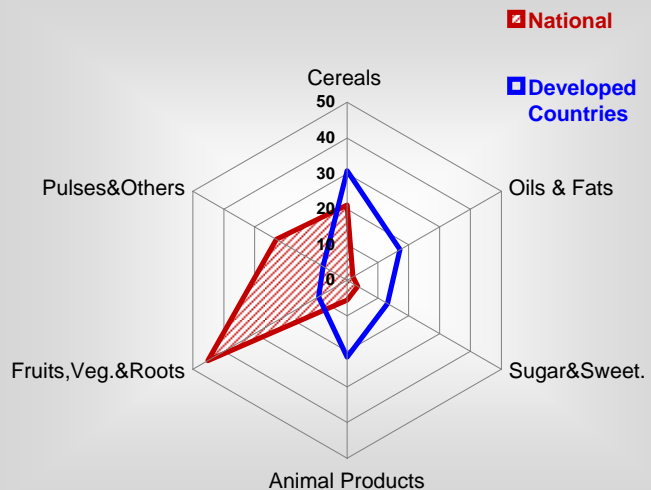
#### Per Capita Daily Consumption



#### Per Capita Daily Calorie Intake From Selected Food Items <sup>00-02</sup>

Rice	42
Wheat	32
Maize	258
Sorghum	46
Potatoes	28
Cassava	307
Sugar	77
Soybean Oil	1
Palm Oil	15
Milk	39
Anim.Fats(Raw&Butter)	9
Eggs	2
Pig Meat	37
Poultry Meat	7
Bovine Meat	22
Sheep & Goats Meat	6

#### Source of Dietary Energy Consumption % <sup>00-02</sup>



### Food Balance <sup>00-02</sup> (1000Tonnes)

Food Groups	Production (+)	Exports (-)	Imports (+)	Seed, Feed, Other Uses (-)	Consumption (=)
Cereals	2 225	41	183	902	1 465
Veg.oils	21	3	66	49	35
Sugar&Sw.	174	2	42	6	208
Roots&Tub.	8 214	0	1	3 246	4 969
Meat	280	-	-	0	280
Milk	574	-	4	29	549

Time reference= <sup>99-01</sup>:1999-2001, <sup>00</sup>:2000, <sup>02</sup>:2002, <sup>00-02</sup>:2000-2002, <sup>03</sup>:2003, <sup>04</sup>:2004, <sup>ly</sup>:Latest Available Year