



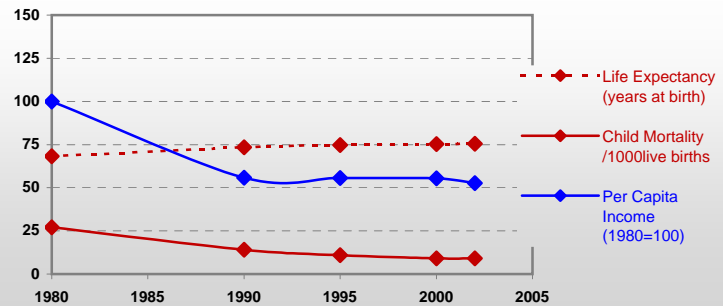
# Country profiles

## United Arab Emirates



### General / Welfare

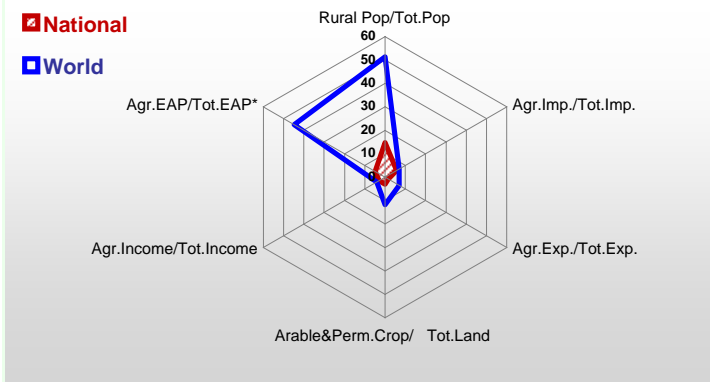
Population <sup>04 *</sup>	3 051
Per Capita Income <sup>02 **</sup>	17 520
Per Capita Agricultural Income <sup>02**</sup>	13 923
Total Exports <sup>02 ****</sup>	85 000
Total Imports <sup>02 ****</sup>	55 000
Agric. External Assistance <sup>99-01 ***</sup>	2
Food Consumption Inequality (G) <sup>ly</sup>	0,12
Income Inequality (G) <sup>ly</sup>	-
Land Inequality (G) <sup>ly</sup>	-
Undernourished Population % <sup>00-02</sup>	< 2.5



\*1000 \*\* \$ \*\*\* 1000 \$ \*\*\*\* Million \$ --- (G): Gini Coefficient --- Income refers to GDP at 1995 Constant Prices

### Agriculture In The Economy<sup>ly</sup>

### Resources

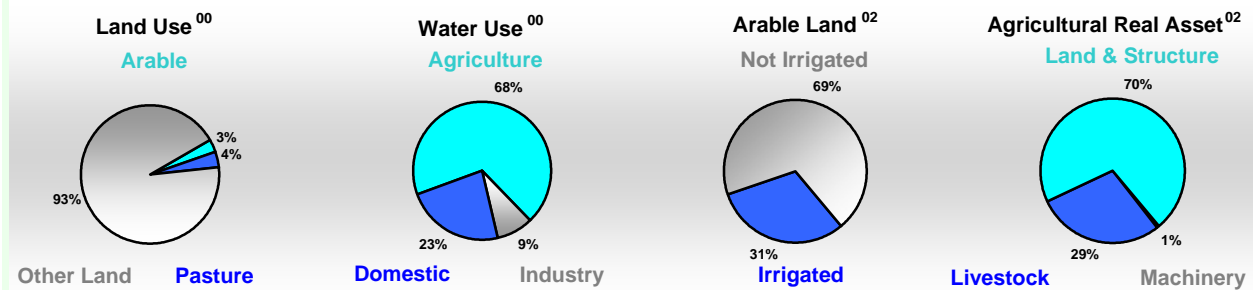


Arable Land <sup>00 *</sup>	60
Permanent Crops <sup>00 *</sup>	187
Pasture <sup>00 *</sup>	305
Cattle & Buffaloes <sup>03 **</sup>	110
Sheep & Goats <sup>03 **</sup>	2 010
Tractors <sup>02 *</sup>	5
Harvesters&Threshers <sup>02 *</sup>	0
Fertilizers Production <sup>02 ***</sup>	277 700
Fertilizers Consumption <sup>02 ***</sup>	35 000
Rainfall Index <sup>02 (mm)</sup>	52

\* EAP: Economically Active Population

\* 1000ha \*\* 1000heads \*\*\* Tonnes N,P<sub>2</sub>O<sub>5</sub>,K<sub>2</sub>O

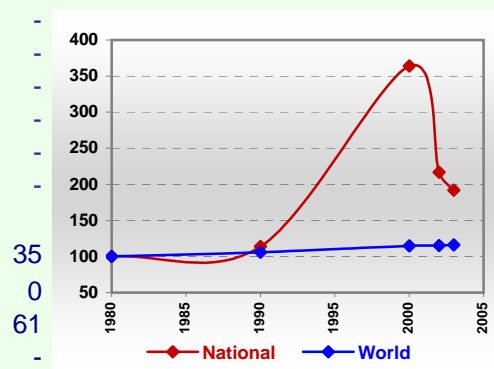
### Resources Distribution



### Production

<b>Agriculture<sup>03 *</sup></b>	<b>Forestry<sup>02</sup></b>	<b>Fisheries<sup>02 *</sup></b>
Cereals	Indust.Roundwood **	Pulpwd.,Rnd&Split **
Meat	Paper, Paperboard *	Roundwood **
Fruits & Vegetables		Log:Saw&Veneer **
Roots & Tubers		Sawnwood **
Pulses		Wood Charcoal *
Oilseeds & Nuts		Woodfuel **
Sugar Crops		Wood Pulp *
Tobacco		Wood-based Panels **
Fibre Crops		
		Pelagic
		Freshwater
		Demersal
		Molluscs

### Per Capita Agricultural Production Index



\* 1000Tonnes \*\* 1000m<sup>3</sup>

Time reference= <sup>99-01</sup>:1999-2001, <sup>00</sup>:2000, <sup>02</sup>:2002, <sup>00-02</sup>:2000-2002, <sup>03</sup>:2003, <sup>04</sup>:2004, <sup>ly</sup>:Latest Available Year

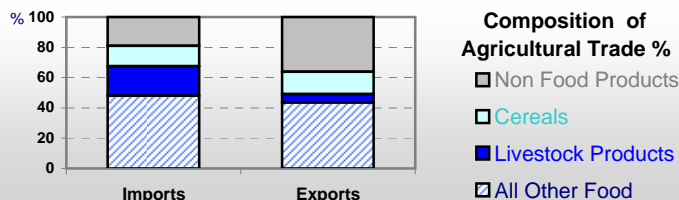


# Country profiles

## United Arab Emirates

### Trade <sup>02</sup>

Agricultural Imports *	3 147
% 4 Major Imports in Agr.Imp	21
% Agr. Imports in Tot. Imports	6
Fishery Imports *	105
Forestry Imports *	323
Agricultural Exports *	1 320
% 4 Major Exports in Agr.Exp.	42
% Agr. Exports in Tot.Exports	2
Fishery Exports *	61
Forestry Exports *	50



### Trade Partners & Products

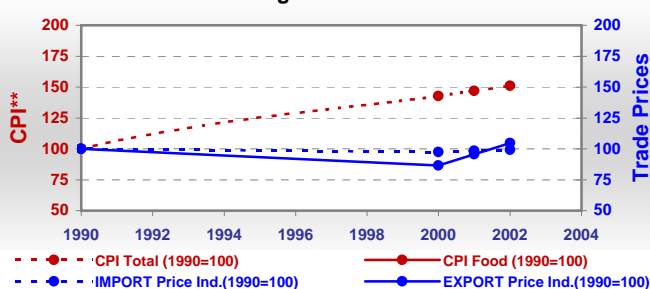
Major Import Partner			
Major Export Partner			
Major Imports	Cigarettes	Mil Rice	Horses
Major Exports	Cigarettes	Horses	Sugar Refind

\* Million \$

### Prices

Producer Prices <sup>00-02</sup>	\$*	\$ Green *
Wheat	-	-
Rice	-	-
Maize	-	-
Soybean	-	-
Coffee	-	-
Tobacco	-	-
Cow Milk	-	-
Cattle (Live Weight)	-	-
Pig (Live Weight)	-	-
Chicken (Live Weight)	-	-

### Consumer and Agricultural Trade Price Indices

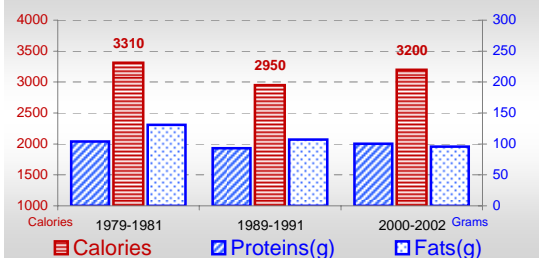


\* per Tonne

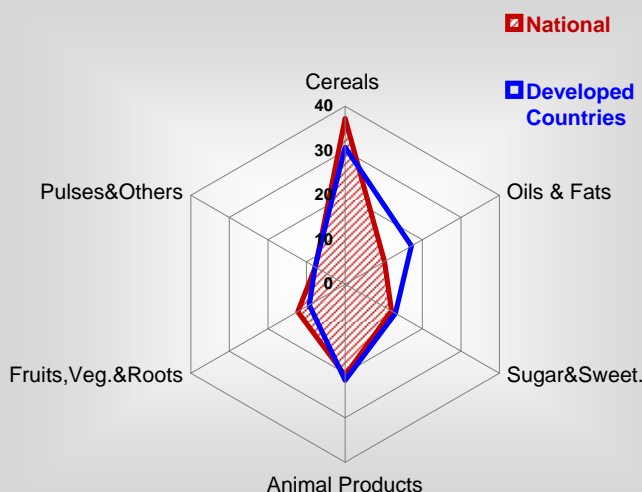
\*\* CPI : Consumer Price Index

### Consumption

#### Per Capita Daily Consumption



#### Source of Dietary Energy Consumption % <sup>00-02</sup>



#### Per Capita Daily Calorie Intake From Selected Food Items <sup>00-02</sup>

Rice	466
Wheat	722
Maize	5
Sorghum	-
Potatoes	30
Cassava	-
Sugar	376
Soybean Oil	46
Palm Oil	-
Milk	256
Anim.Fats(Raw&Butter)	73
Eggs	46
Pig Meat	-
Poultry Meat	172
Bovine Meat	36
Sheep & Goats Meat	80

#### Food Balance <sup>00-02</sup> (1000Tonnes)

Food Groups	Production (+)	Exports (-)	Imports (+)	Seed, Feed, Other Uses (-)	Consumption (=)
Cereals	-	592	2 076	1 087	397
Veg.oils	-	182	228	16	30
Sugar&Sw.	-	495	1 165	559	111
Roots&Tub.	12	5	60	20	48
Meat	76	7	153	6	216
Milk	87	12	415	70	420

Time reference= <sup>99-01</sup>:1999-2001, <sup>00</sup>:2000, <sup>02</sup>:2002, <sup>00-02</sup>:2000-2002, <sup>03</sup>:2003, <sup>04</sup>:2004, <sup>ly</sup>:Latest Available Year