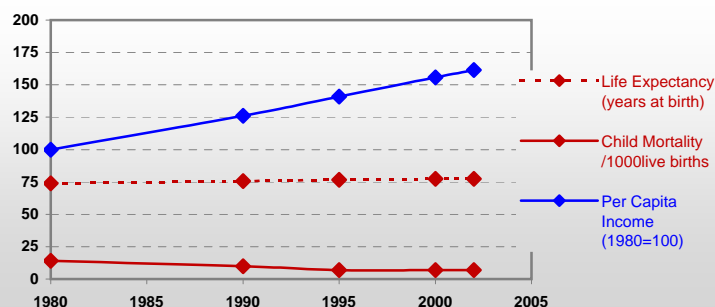


## United Kingdom



### General / Welfare

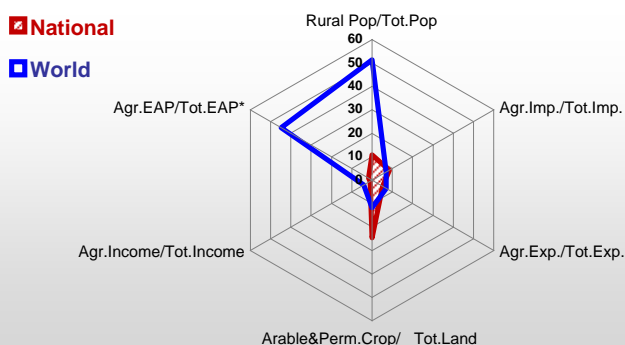
Population <sup>04 *</sup>	59 427
Per Capita Income <sup>02 **</sup>	22 974
Per Capita Agricultural Income <sup>02**</sup>	16 861
Total Exports <sup>02 ****</sup>	280 314
Total Imports <sup>02 ****</sup>	346 463
Agric. External Assistance <sup>99-01 ***</sup>	-1 148 140
Food Consumption Inequality (G) <sup>ly</sup>	0,11
Income Inequality (G) <sup>ly</sup>	0,36
Land Inequality (G) <sup>ly</sup>	0,66
Undernourished Population % <sup>00-02</sup>	< 2.5



\* 1000 \*\* \$ \*\*\*\* Million \$ --- (G) : Gini Coefficient --- Income refers to GDP at 1995 Constant Prices

### Agriculture In The Economy<sup>ly</sup>

### Resources

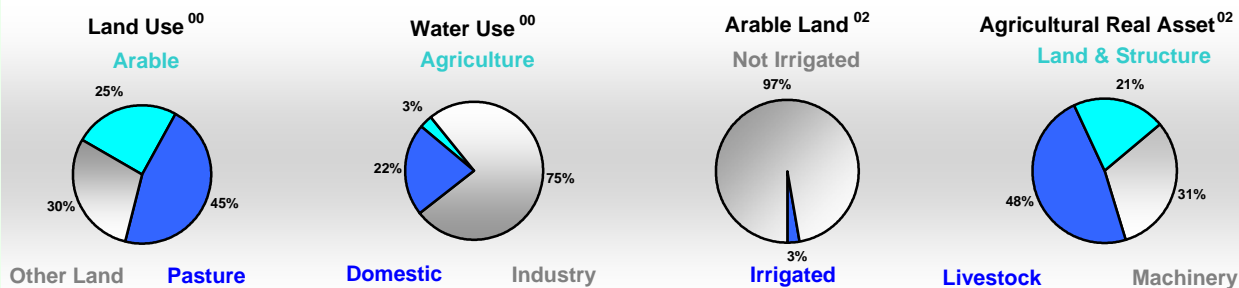


Arable Land <sup>00 *</sup>	5 876
Permanent Crops <sup>00 *</sup>	52
Pasture <sup>00 *</sup>	11 036
Cattle & Buffaloes <sup>03 **</sup>	10 459
Sheep & Goats <sup>03 **</sup>	35 729
Tractors <sup>02 *</sup>	87
Harvesters&Threshers <sup>02 *</sup>	8
Fertilizers Production <sup>02 ***</sup>	1 130 000
Fertilizers Consumption <sup>02 ***</sup>	1 801 000
Rainfall Index <sup>02 (mm)</sup>	1 129

\* EAP : Economically Active Population

\* 1000ha \*\* 1000heads \*\*\* Tonnes N,P<sub>2</sub>O<sub>5</sub>,K<sub>2</sub>O

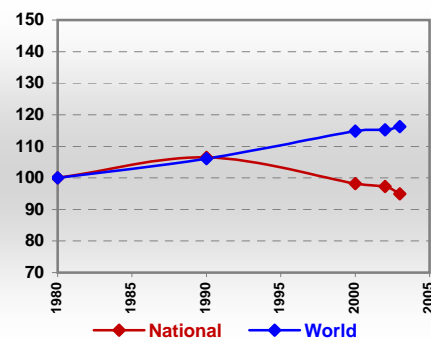
### Resources Distribution



### Production

Agriculture <sup>03 *</sup>		Pulpwd.,Rnd&Split <sup>**</sup>		
Cereals	21 511	Roundwood <sup>**</sup>		2 527
Meat	3 272	Log:Saw&Veneer <sup>**</sup>		7 375
Fruits & Vegetables	2 901	Sawnwood <sup>**</sup>		4 273
Roots & Tubers	5 918	Wood Charcoal <sup>*</sup>		2 549
Pulses	968	Woodfuel <sup>**</sup>		5
Oilseeds & Nuts	694	Wood Pulp <sup>*</sup>		233
Sugar Crops	9 296	Wood-based Panels <sup>**</sup>		492
Tobacco	-			2 917
Fibre Crops	28	Fisheries <sup>02 *</sup>		
		Pelagic		301
		Freshwater		164
Indust.Roundwood <sup>**</sup>	7 142	Demersal		248
Paper, Paperboard <sup>*</sup>	6 481	Molluscs		89

### Per Capita Agricultural Production Index



\* 1000Tonnes \*\* 1000m<sup>3</sup>

Time reference= <sup>99-01</sup>:1999-2001, <sup>00</sup>:2000, <sup>02</sup>:2002, <sup>00-02</sup>:2000-2002, <sup>03</sup>:2003, <sup>04</sup>:2004, <sup>ly</sup>:Latest Available Year

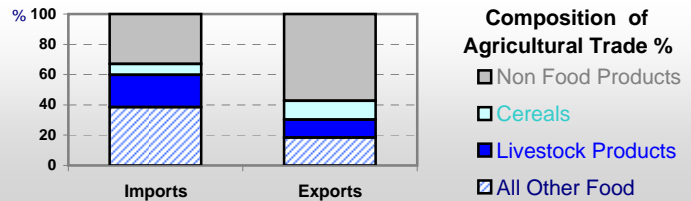


# Country profiles

## United Kingdom

### Trade <sup>02</sup>

Agricultural Imports *	29 147
% 4 Major Imports in Agr.Imp	15
% Agr. Imports in Tot. Imports	8
Fishery Imports *	2 328
Forestry Imports *	8 705
Agricultural Exports *	14 655
% 4 Major Exports in Agr.Exp.	40
% Agr. Exports in Tot.Exports	5
Fishery Exports *	1 353
Forestry Exports *	1 774



### Trade Partners & Products

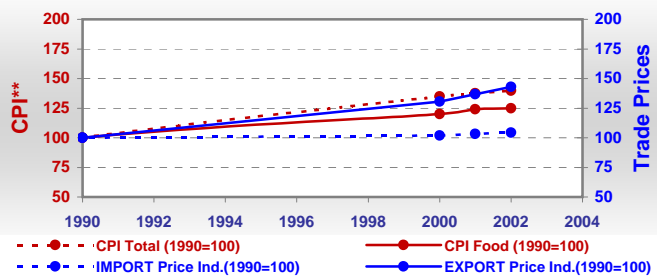
Major Import Partner	Netherlands	France	Ireland
Major Export Partner	Ireland	France	USA
Major Imports	Wine	Food Prep	Cheese W Cow
Major Exports	Bev Dis Alc	Cigarettes	Food Prep

\* Million \$

### Prices

Producer Prices <sup>00-02</sup>	\$*	\$ Green *
Wheat	112	94
Rice	-	-
Maize	-	-
Soybean	-	-
Coffee	-	-
Tobacco	-	-
Cow Milk	248	209
Cattle (Live Weight)	1 367	1 153
Pig (Live Weight)	1 109	934
Chicken (Live Weight)	753	633

### Consumer and Agricultural Trade Price Indices

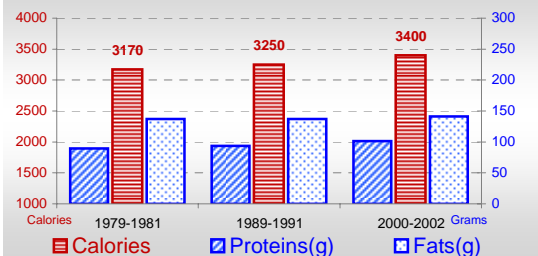


\* per Tonne

\*\* CPI : Consumer Price Index

### Consumption

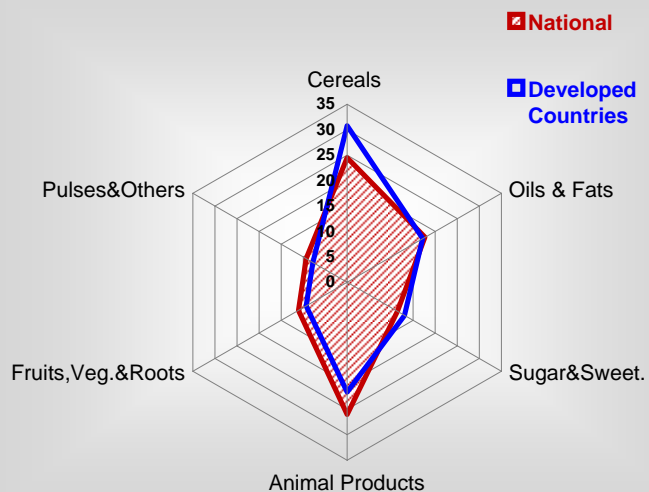
#### Per Capita Daily Consumption



#### Per Capita Daily Calorie Intake From Selected Food Items <sup>00-02</sup>

Rice	29
Wheat	744
Maize	30
Sorghum	-
Potatoes	206
Cassava	-
Sugar	378
Soybean Oil	73
Palm Oil	52
Milk	345
Anim.Fats(Raw&Butter)	139
Eggs	41
Pig Meat	248
Poultry Meat	105
Bovine Meat	54
Sheep & Goats Meat	41

#### Source of Dietary Energy Consumption % <sup>00-02</sup>



#### Food Balance <sup>00-02</sup> (1000Tonnes)

Food Groups	Production (+)	Exports (-)	Imports (+)	Seed, Feed, Other Uses (-)	Consumption (=)
Cereals	22 032	4 831	4 169	15 246	6 124
Veg.oils	832	292	1 432	915	1 057
Sugar&Sw.	2 005	1 082	1 971	470	2 424
Roots&Tub.	6 503	282	1 606	1 014	6 813
Meat	3 382	420	1 774	51	4 685
Milk	14 699	2 220	3 273	2 288	13 464

Time reference= <sup>99-01</sup>:1999-2001, <sup>00</sup>:2000, <sup>02</sup>:2002, <sup>00-02</sup>:2000-2002, <sup>03</sup>:2003, <sup>04</sup>:2004, <sup>ly</sup>:Latest Available Year