



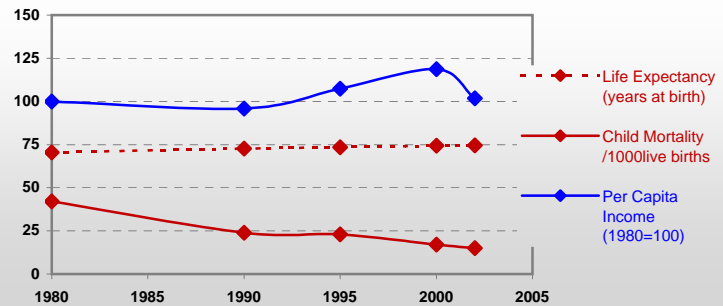
Country profiles

Uruguay



General / Welfare

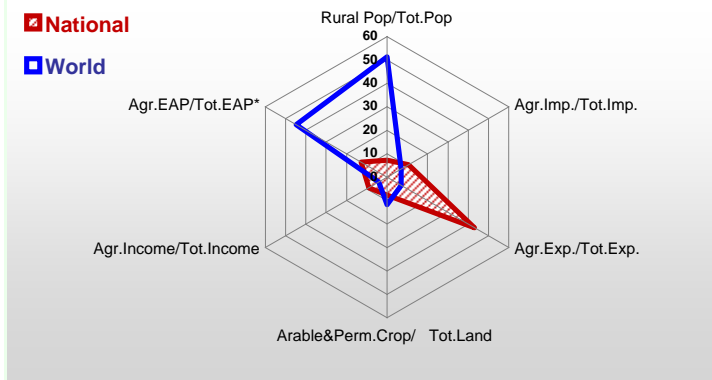
Population ^{04 *}	3 439
Per Capita Income ^{02 **}	5 495
Per Capita Agricultural Income ^{02**}	4 302
Total Exports ^{02 ****}	1 861
Total Imports ^{02 ****}	1 964
Agric. External Assistance ^{99-01 ***}	53 095
Food Consumption Inequality (G) ^{ly}	0,12
Income Inequality (G) ^{ly}	0,45
Land Inequality (G) ^{ly}	0,79
Undernourished Population % ⁰⁰⁻⁰²	4



*1000 ** \$ *** 1000 \$ **** Million \$ --- (G) : Gini Coefficient --- Income refers to GDP at 1995 Constant Prices

Agriculture In The Economy^{ly}

Resources

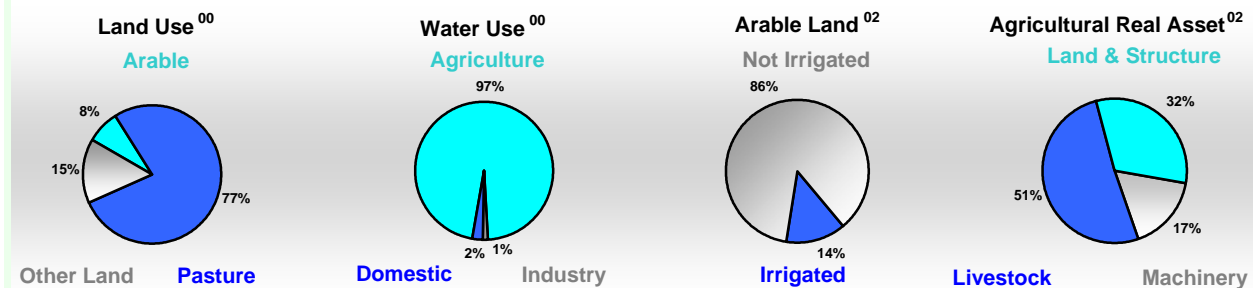


Arable Land ^{00 *}	1 300
Permanent Crops ^{00 *}	40
Pasture ^{00 *}	13 543
Cattle & Buffaloes ^{03 **}	11 689
Sheep & Goats ^{03 **}	9 796
Tractors ^{02 *}	25
Harvesters&Threshers ^{02 *}	4
Fertilizers Production ^{02 ***}	12 000
Fertilizers Consumption ^{02 ***}	128 929
Rainfall Index ^{02 (mm)}	1 866

* EAP : Economically Active Population

* 1000ha ** 1000heads *** Tonnes N,P₂O₅,K₂O

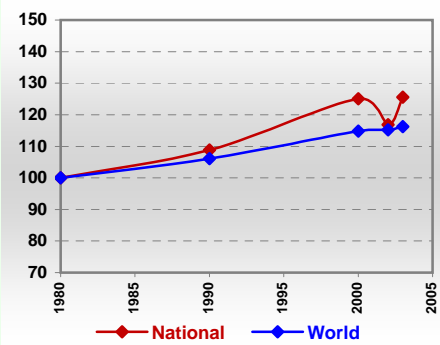
Resources Distribution



Production

Agriculture^{03 *}		
Cereals	2 181	Pulpwd.,Rnd&Split ^{**}
Meat	545	Roundwood ^{**}
Fruits & Vegetables	633	Log:Saw&Veneer ^{**}
Roots & Tubers	216	Sawnwood ^{**}
Pulses	7	Wood Charcoal [*]
Oilseeds & Nuts	131	Woodfuel ^{**}
Sugar Crops	165	Wood Pulp [*]
Tobacco	3	Wood-based Panels ^{**}
Fibre Crops	-	
Forestry⁰²		Fisheries^{02 *}
Indust.Roundwood ^{**}	1 832	Pelagic
Paper, Paperboard [*]	89	Freshwater
		Demersal
		Molluscs

Per Capita Agricultural Production Index



* 1000Tonnes ** 1000m³

Time reference= ⁹⁹⁻⁰¹:1999-2001, ⁰⁰:2000, ⁰²:2002, ⁰⁰⁻⁰²:2000-2002, ⁰³:2003, ⁰⁴:2004, ^{ly}:Latest Available Year



Country profiles

Uruguay

Trade ⁰²

Agricultural Imports *	320
% 4 Major Imports in Agr.Imp	19
% Agr. Imports in Tot. Imports	11
Fishery Imports *	12
Forestry Imports *	64
Agricultural Exports *	982
% 4 Major Exports in Agr.Exp.	36
% Agr. Exports in Tot.Exports	43
Fishery Exports *	102
Forestry Exports *	113



Trade Partners & Products

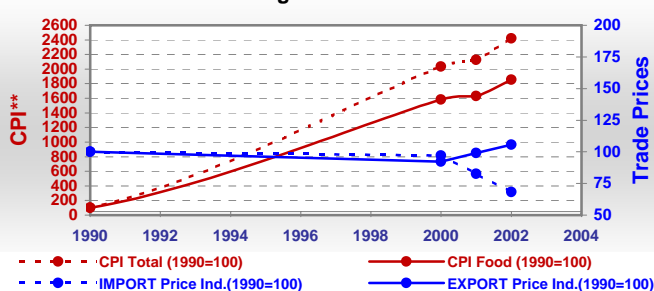
Major Import Partner	Argentina	Brazil	France
Major Export Partner	Brazil	China	UK
Major Imports	Wheat	Food Prep	Barley
Major Exports	Beef Bonless	Hair Carded	Mil Rice

* Million \$

Prices

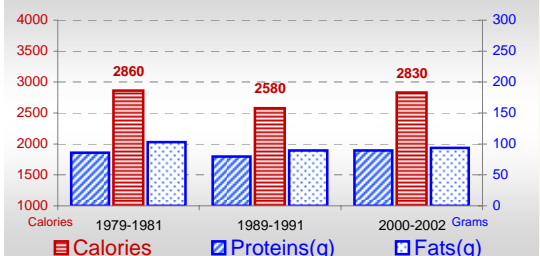
Producer Prices ⁰⁰⁻⁰²	\$*	\$ Green *
Wheat	103	141
Rice	109	160
Maize	110	162
Soybean	150	219
Coffee	-	-
Tobacco	953	1 436
Cow Milk	114	159
Cattle (Live Weight)	608	845
Pig (Live Weight)	745	1 020
Chicken (Live Weight)	796	1 124

Consumer and Agricultural Trade Price Indices

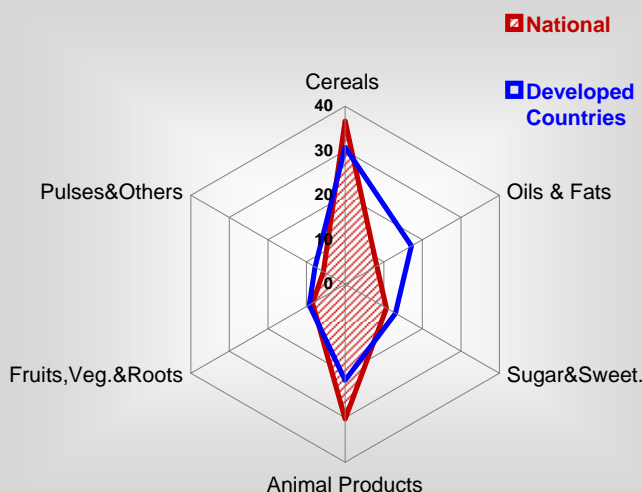


Consumption

Per Capita Daily Consumption



Source of Dietary Energy Consumption % ⁰⁰⁻⁰²



Per Capita Daily Calorie Intake From Selected Food Items ⁰⁰⁻⁰²

Rice	135
Wheat	709
Maize	194
Sorghum	-
Potatoes	75
Cassava	1
Sugar	249
Soybean Oil	43
Palm Oil	-
Milk	306
Anim.Fats(Raw&Butter)	60
Eggs	30
Pig Meat	57
Poultry Meat	52
Bovine Meat	321
Sheep & Goats Meat	69

Food Balance ^{00-02 (1000Tonnes)}

Food Groups	Production (+)	Exports (-)	Imports (+)	Seed, Feed, Other Uses (-)	Consumption (=)
Cereals	1 404	972	306	257	481
Veg.oils	21	2	22	17	24
Sugar&Sw.	16	15	106	0	107
Roots&Tub.	188	0	46	53	181
Meat	530	268	13	-18	293
Milk	1 469	472	5	334	668

Time reference= ⁹⁹⁻⁰¹:1999-2001, ⁰⁰:2000, ⁰²:2002, ⁰⁰⁻⁰²:2000-2002, ⁰³:2003, ⁰⁴:2004, ^{ly}:Latest Available Year