



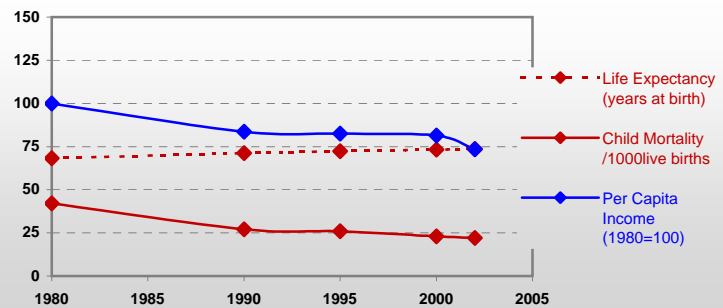
# Country profiles

## Venezuela



### General / Welfare

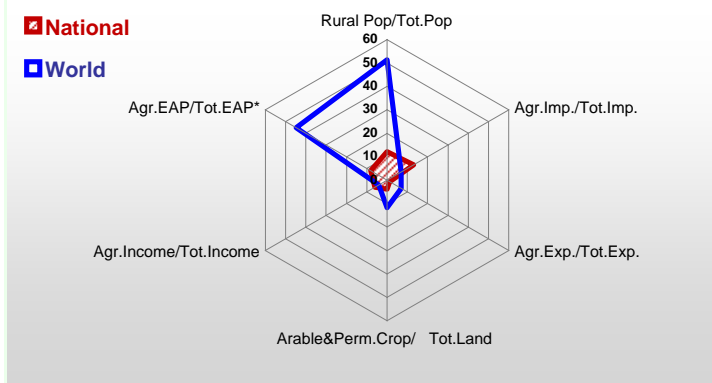
Population <sup>04 *</sup>	26 170
Per Capita Income <sup>02 **</sup>	2 979
Per Capita Agricultural Income <sup>02**</sup>	1 929
Total Exports <sup>02 ****</sup>	25 890
Total Imports <sup>02 ****</sup>	11 673
Agric. External Assistance <sup>99-01 ***</sup>	49 532
Food Consumption Inequality (G) <sup>ly</sup>	0,13
Income Inequality (G) <sup>ly</sup>	0,49
Land Inequality (G) <sup>ly</sup>	0,88
Undernourished Population % <sup>00-02</sup>	17



\* 1000 \*\* \$ \*\*\* 1000 \$ \*\*\*\* Million \$ --- (G) : Gini Coefficient --- Income refers to GDP at 1995 Constant Prices

### Agriculture In The Economy<sup>ly</sup>

### Resources

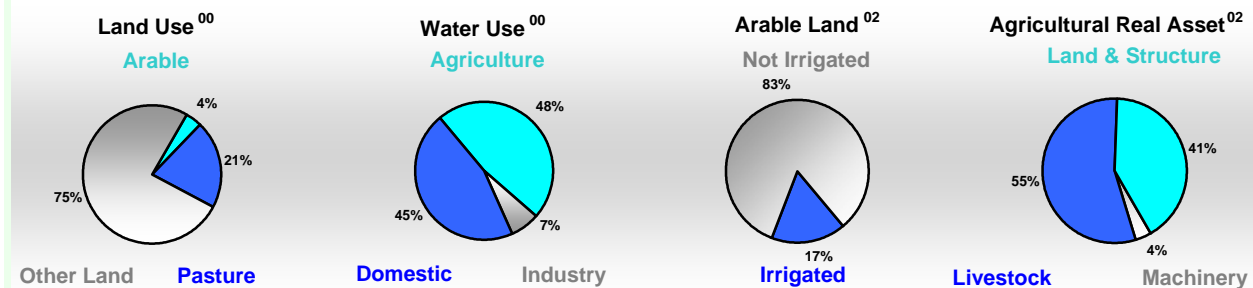


Arable Land <sup>00 *</sup>	2 595
Permanent Crops <sup>00 *</sup>	810
Pasture <sup>00 *</sup>	18 240
Cattle & Buffaloes <sup>03 **</sup>	16 071
Sheep & Goats <sup>03 **</sup>	3 520
Tractors <sup>02 *</sup>	20
Harvesters&Threshers <sup>02 *</sup>	2
Fertilizers Production <sup>02 ***</sup>	575 500
Fertilizers Consumption <sup>02 ***</sup>	300 000
Rainfall Index <sup>02 (mm)</sup>	1 813

\* EAP : Economically Active Population

\* 1000ha \*\* 1000heads \*\*\* Tonnes N,P<sub>2</sub>O<sub>5</sub>,K<sub>2</sub>O

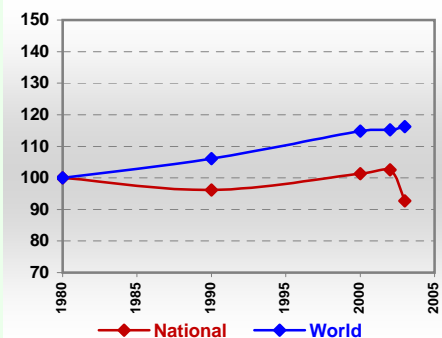
### Resources Distribution



### Production

<b>Agriculture<sup>03 *</sup></b>		
Cereals	2 805	Pulpwd.,Rnd&Split <sup>**</sup>
Meat	1 206	Roundwood <sup>**</sup>
Fruits & Vegetables	3 928	Log:Saw&Veneer <sup>**</sup>
Roots & Tubers	955	Sawnwood <sup>**</sup>
Pulses	23	Wood Charcoal <sup>*</sup>
Oilseeds & Nuts	112	Woodfuel <sup>**</sup>
Sugar Crops	8 880	Wood Pulp <sup>*</sup>
Tobacco	5	Wood-based Panels <sup>**</sup>
Fibre Crops	7	
<b>Forestry<sup>02</sup></b>		<b>Fisheries<sup>02 *</sup></b>
Indust.Roundwood <sup>**</sup>	1 227	Pelagic
Paper, Paperboard <sup>*</sup>	562	Freshwater
		Demersal
		Molluscs

### Per Capita Agricultural Production Index



\* 1000Tonnes \*\* 1000m<sup>3</sup>

Time reference= <sup>99-01</sup> :1999-2001, <sup>00</sup> :2000, <sup>02</sup> :2002, <sup>00-02</sup> :2000-2002, <sup>03</sup> :2003, <sup>04</sup> :2004, <sup>ly</sup> :Latest Available Year

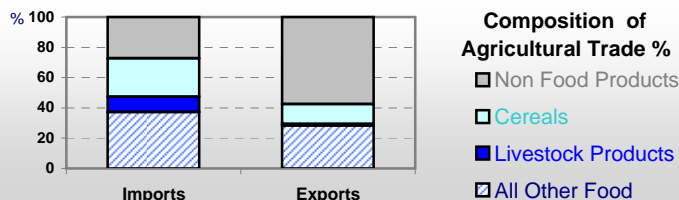


# Country profiles

## Venezuela

### Trade <sup>02</sup>

Agricultural Imports *	1 550
% 4 Major Imports in Agr.Imp	33
% Agr. Imports in Tot. Imports	13
Fishery Imports *	44
Forestry Imports *	250
Agricultural Exports *	289
% 4 Major Exports in Agr.Exp.	6
% Agr. Exports in Tot.Exports	1
Fishery Exports *	101
Forestry Exports *	82



### Trade Partners & Products

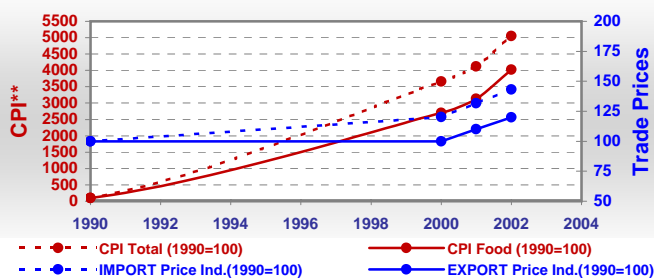
<b>Major Import Partner</b>	USA	Colombia	Bolivia
<b>Major Export Partner</b>	Colombia	Spain	USA
<b>Major Imports</b>	Wheat	Bev Dis Alc	Oil Soyabean
<b>Major Exports</b>	Bev Dis Alc	Food Wastes	Cigarettes

\* Million \$

### Prices

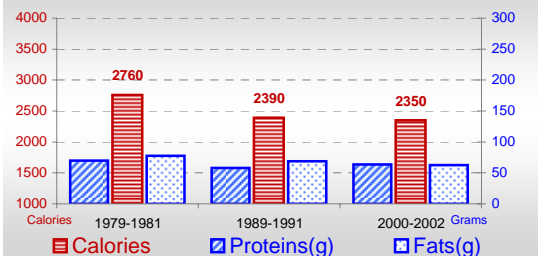
Producer Prices <sup>00-02</sup>	\$*	\$ Green *
Wheat	227	187
Rice	197	159
Maize	247	203
Soybean	230	190
Coffee	1 457	1 121
Tobacco	6 775	5 209
Cow Milk	294	238
Cattle (Live Weight)	1 101	896
Pig (Live Weight)	1 201	972
Chicken (Live Weight)	1 047	846

### Consumer and Agricultural Trade Price Indices

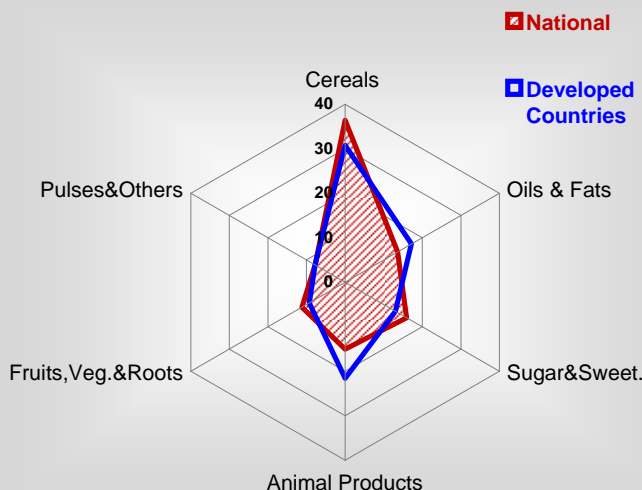


### Consumption

#### Per Capita Daily Consumption



#### Source of Dietary Energy Consumption % <sup>00-02</sup>



#### Per Capita Daily Calorie Intake From Selected Food Items <sup>00-02</sup>

Rice	120
Wheat	353
Maize	371
Sorghum	-
Potatoes	28
Cassava	35
Sugar	370
Soybean Oil	131
Palm Oil	62
Milk	106
Anim.Fats(Raw&Butter)	37
Eggs	20
Pig Meat	19
Poultry Meat	114
Bovine Meat	54
Sheep & Goats Meat	1

#### Food Balance <sup>00-02</sup> (1000Tonnes)

Food Groups	Production (+)	Exports (-)	Imports (+)	Seed, Feed, Other Uses (-)	Consumption (=)
Cereals	2 695	98	2 515	2 268	2 844
Veg.oils	157	14	308	159	292
Sugar&Sw.	643	2	278	-8	927
Roots&Tub.	1 094	2	146	297	941
Meat	1 388	1	9	24	1 372
Milk	1 359	5	614	-2	1 970

Time reference= <sup>99-01</sup>:1999-2001, <sup>00</sup>:2000, <sup>02</sup>:2002, <sup>00-02</sup>:2000-2002, <sup>03</sup>:2003, <sup>04</sup>:2004, <sup>ly</sup>:Latest Available Year