



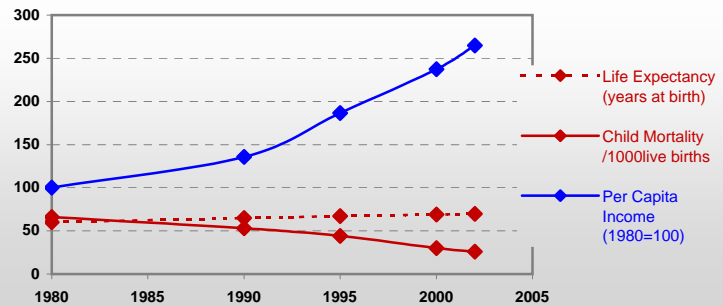
Country profiles

Viet Nam



General / Welfare

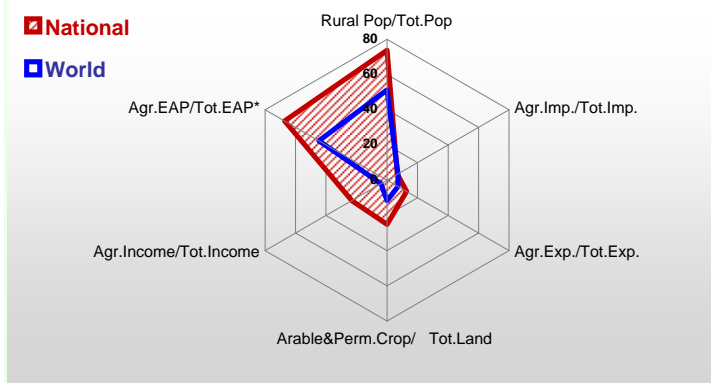
Population ^{04 *}	82 481
Per Capita Income ^{02 **}	413
Per Capita Agricultural Income ^{02**}	140
Total Exports ^{02 ****}	16 706
Total Imports ^{02 ****}	19 733
Agric. External Assistance ^{99-01 ***}	1 323 642
Food Consumption Inequality (G) ^{ly}	0,17
Income Inequality (G) ^{ly}	0,36
Land Inequality (G) ^{ly}	0,53
Undernourished Population % ⁰⁰⁻⁰²	19



*1000 ** \$ *** 1000 \$ **** Million \$ --- (G) : Gini Coefficient --- Income refers to GDP at 1995 Constant Prices

Agriculture In The Economy^{ly}

Resources

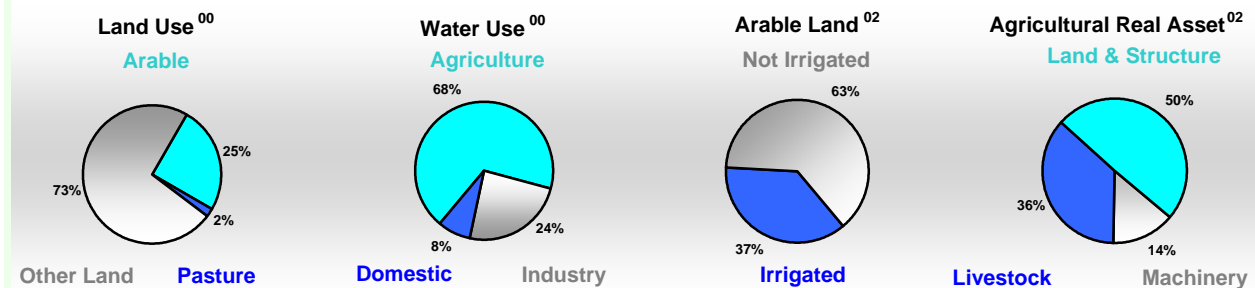


Arable Land ^{00 *}	6 200
Permanent Crops ^{00 *}	1 938
Pasture ^{00 *}	642
Cattle & Buffaloes ^{03 **}	7 229
Sheep & Goats ^{03 **}	780
Tractors ^{02 *}	24
Harvesters&Threshers ^{02 *}	35
Fertilizers Production ^{02 ***}	279 200
Fertilizers Consumption ^{02 ***}	1 975 200
Rainfall Index ^{02 (mm)}	1 740

* EAP : Economically Active Population

* 1000ha ** 1000heads *** Tonnes N,P₂O₅,K₂O

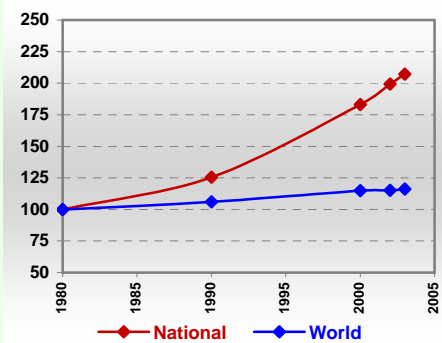
Resources Distribution



Production

Agriculture^{03 *}		
Cereals	37 452	Pulpwd.,Rnd&Split ^{**}
Meat	2 487	Roundwood ^{**}
Fruits & Vegetables	12 726	Log:Saw&Veneer ^{**}
Roots & Tubers	7 183	Sawnwood ^{**}
Pulses	254	Wood Charcoal [*]
Oilseeds & Nuts	938	Woodfuel ^{**}
Sugar Crops	16 525	Wood Pulp [*]
Tobacco	33	Wood-based Panels ^{**}
Fibre Crops	120	
Forestry⁰²		Fisheries^{02 *}
Indust.Roundwood ^{**}	4 183	Pelagic
Paper, Paperboard [*]	384	Freshwater
		Demersal
		Molluscs

Per Capita Agricultural Production Index



* 1000Tonnes ** 1000m³

Time reference= ⁹⁹⁻⁰¹ :1999-2001, ⁰⁰ :2000, ⁰² :2002, ⁰⁰⁻⁰² :2000-2002, ⁰³ :2003, ⁰⁴ :2004, ^{ly} :Latest Available Year



Country profiles

Viet Nam

Trade ⁰²

Agricultural Imports *	1 332
% 4 Major Imports in Agr.Imp	18
% Agr. Imports in Tot. Imports	7
Fishery Imports *	92
Forestry Imports *	167
Agricultural Exports *	2 114
% 4 Major Exports in Agr.Exp.	19
% Agr. Exports in Tot.Exports	13
Fishery Exports *	2 030
Forestry Exports *	64



Trade Partners & Products

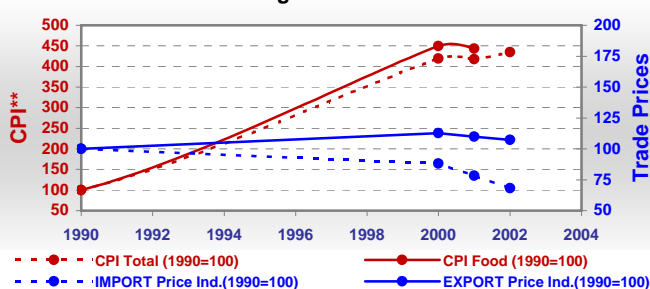
Major Import Partner			
Major Export Partner			
Major Imports	Cigarettes	Cake Soybean	Cotton Lint
Major Exports	Mil Rice	Coffee,Green	Rubber Dry

* Million \$

Prices

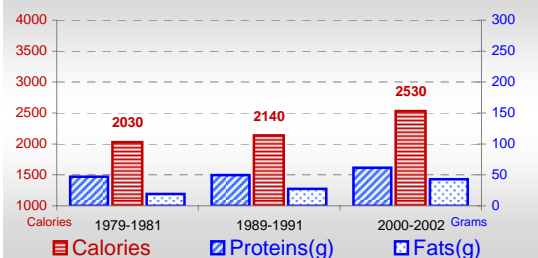
Producer Prices ⁰⁰⁻⁰²	\$*	\$ Green *
Wheat	-	-
Rice	-	-
Maize	-	-
Soybean	-	-
Coffee	-	-
Tobacco	-	-
Cow Milk	-	-
Cattle (Live Weight)	-	-
Pig (Live Weight)	-	-
Chicken (Live Weight)	-	-

Consumer and Agricultural Trade Price Indices

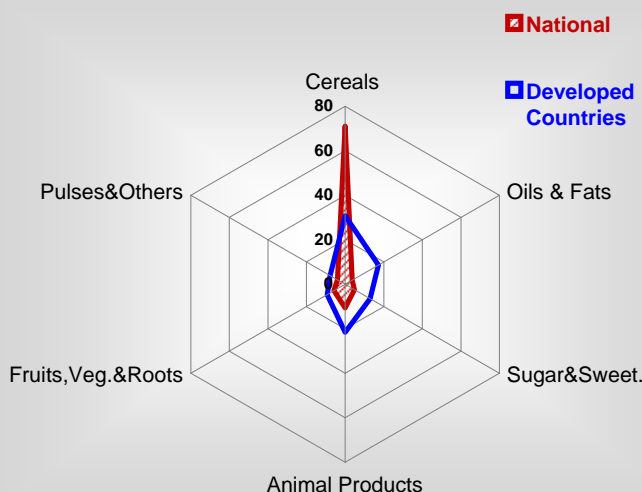


Consumption

Per Capita Daily Consumption



Source of Dietary Energy Consumption % ⁰⁰⁻⁰²



Per Capita Daily Calorie Intake From Selected Food Items ⁰⁰⁻⁰²

Rice	1662
Wheat	70
Maize	69
Sorghum	-
Potatoes	7
Cassava	9
Sugar	124
Soybean Oil	13
Palm Oil	-
Milk	6
Anim.Fats(Raw&Butter)	19
Eggs	9
Pig Meat	183
Poultry Meat	21
Bovine Meat	10
Sheep & Goats Meat	-

Food Balance ⁰⁰⁻⁰² (1000Tonnes)

Food Groups	Production (+)	Exports (-)	Imports (+)	Seed, Feed, Other Uses (-)	Consumption (=)
Cereals	24 256	3 551	1 125	7 072	14 758
Veg.oils	194	50	286	193	237
Sugar&Sw.	1 126	80	50	63	1 033
Roots&Tub.	5 304	575	12	3 703	1 037
Meat	2 133	46	4	1	2 090
Milk	96	-	265	3	358

Time reference= ⁹⁹⁻⁰¹:1999-2001, ⁰⁰:2000, ⁰²:2002, ⁰⁰⁻⁰²:2000-2002, ⁰³:2003, ⁰⁴:2004, ^{ly}:Latest Available Year