



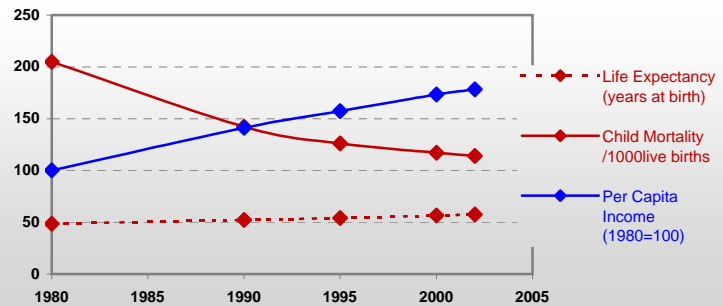
Country profiles

Yemen



General / Welfare

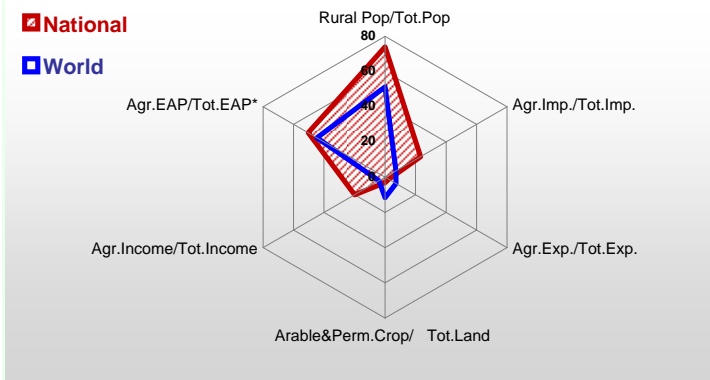
Population ^{04 *}	20 733
Per Capita Income ^{02 **}	330
Per Capita Agricultural Income ^{02**}	133
Total Exports ^{02 ****}	3 336
Total Imports ^{02 ****}	2 921
Agric. External Assistance ^{99-01 ***}	59 604
Food Consumption Inequality (G) ^{ly}	0,16
Income Inequality (G) ^{ly}	0,33
Land Inequality (G) ^{ly}	-
Undernourished Population % ⁰⁰⁻⁰²	36



*1000 ** \$ *** 1000 \$ **** Million \$ --- (G): Gini Coefficient --- Income refers to GDP at 1995 Constant Prices

Agriculture In The Economy^{ly}

Resources

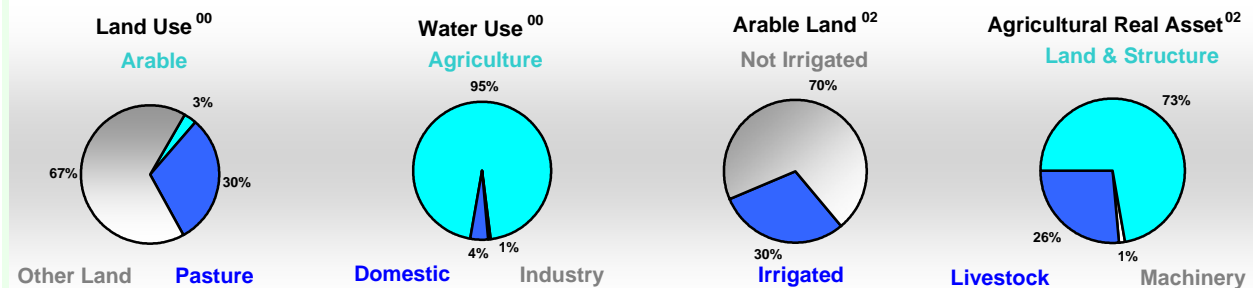


Arable Land ^{00 *}	1 545
Permanent Crops ^{00 *}	124
Pasture ^{00 *}	16 065
Cattle & Buffaloes ^{03 **}	1 400
Sheep & Goats ^{03 **}	13 750
Tractors ^{02 *}	4
Harvesters&Threshers ^{02 *}	0
Fertilizers Production ^{02 ***}	-
Fertilizers Consumption ^{02 ***}	11 600
Rainfall Index ^{02 (mm)}	231

* EAP: Economically Active Population

* 1000ha ** 1000heads *** Tonnes N,P₂O₅,K₂O

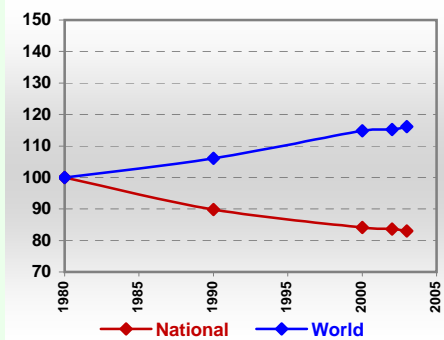
Resources Distribution



Production

Agriculture ^{03 *}		Forestry ⁰²		Fisheries ^{02 *}	
Cereals	426	Indust.Roundwood **	-	Pulpwd.,Rnd&Split **	-
Meat	202	Paper, Paperboard *	-	Roundwood **	326
Fruits & Vegetables	1 282			Log:Saw&Veneer **	-
Roots & Tubers	214			Sawnwood **	-
Pulses	61			Wood Charcoal *	38
Oilseeds & Nuts	11			Woodfuel **	326
Sugar Crops	-			Wood Pulp *	-
Tobacco	12			Wood-based Panels **	-
Fibre Crops	10				
				Pelagic	113
				Freshwater	-
				Demersal	34
				Molluscs	-

Per Capita Agricultural Production Index



* 1000Tonnes ** 1000m³

Time reference= ⁹⁹⁻⁰¹:1999-2001, ⁰⁰:2000, ⁰²:2002, ⁰⁰⁻⁰²:2000-2002, ⁰³:2003, ⁰⁴:2004, ^{ly}:Latest Available Year

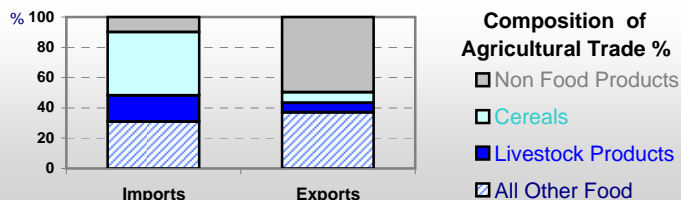


Country profiles

Yemen

Trade ⁰²

Agricultural Imports *	841
% 4 Major Imports in Agr.Imp	41
% Agr. Imports in Tot. Imports	23
Fishery Imports *	7
Forestry Imports *	86
Agricultural Exports *	81
% 4 Major Exports in Agr.Exp.	17
% Agr. Exports in Tot.Exports	2
Fishery Exports *	43
Forestry Exports *	-



Trade Partners & Products

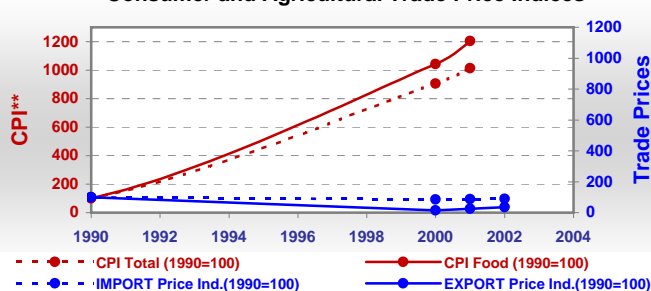
Major Import Partner	Brazil	India	USA
Major Export Partner	Saudi Arabia	Italy	Djibouti
Major Imports	Wheat	Sugar Refind	Oil of Palm
Major Exports	Skinwool Sh	Coffee,Green	Bananas

* Million \$

Prices

Producer Prices ⁰⁰⁻⁰²	\$*	\$ Green *
Wheat	-	-
Rice	-	-
Maize	-	-
Soybean	-	-
Coffee	-	-
Tobacco	-	-
Cow Milk	-	-
Cattle (Live Weight)	-	-
Pig (Live Weight)	-	-
Chicken (Live Weight)	-	-

Consumer and Agricultural Trade Price Indices

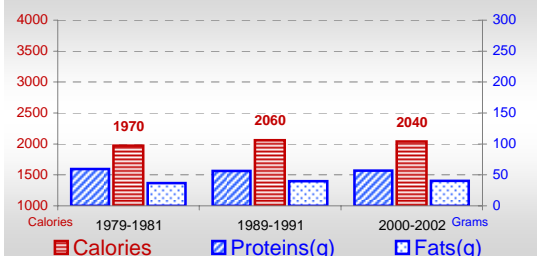


* per Tonne

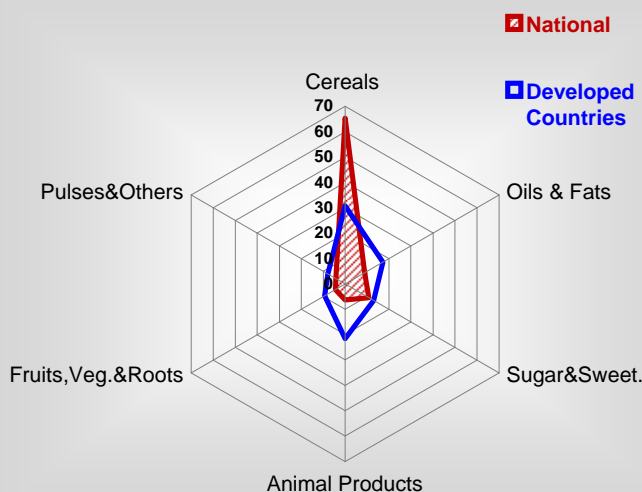
** CPI : Consumer Price Index

Consumption

Per Capita Daily Consumption



Source of Dietary Energy Consumption % ⁰⁰⁻⁰²



Per Capita Daily Calorie Intake From Selected Food Items ⁰⁰⁻⁰²

Rice	127
Wheat	919
Maize	107
Sorghum	151
Potatoes	20
Cassava	-
Sugar	220
Soybean Oil	7
Palm Oil	136
Milk	37
Anim.Fats(Raw&Butter)	15
Eggs	7
Pig Meat	-
Poultry Meat	27
Bovine Meat	24
Sheep & Goats Meat	15

Food Balance ⁰⁰⁻⁰² (1000Tonnes)

Food Groups	Production (+)	Exports (-)	Imports (+)	Seed, Feed, Other Uses (-)	Consumption (=)
Cereals	645	12	2 471	109	2 995
Veg.oils	11	-	143	26	128
Sugar&Sw.	-	2	497	72	423
Roots&Tub.	210	1	0	24	186
Meat	184	-	72	0	256
Milk	235	3	348	12	568

Time reference= ⁹⁹⁻⁰¹:1999-2001, ⁰⁰:2000, ⁰²:2002, ⁰⁰⁻⁰²:2000-2002, ⁰³:2003, ⁰⁴:2004, ^{ly}:Latest Available Year