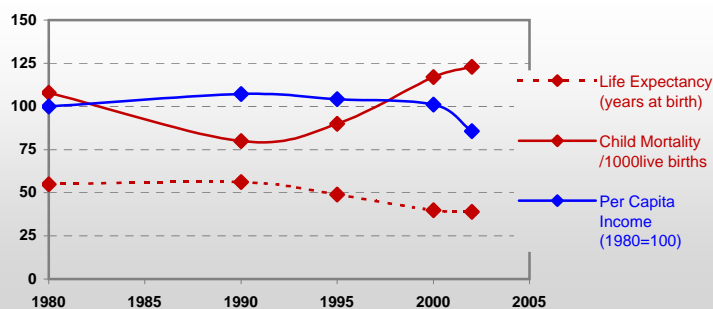


Zimbabwe



General / Welfare

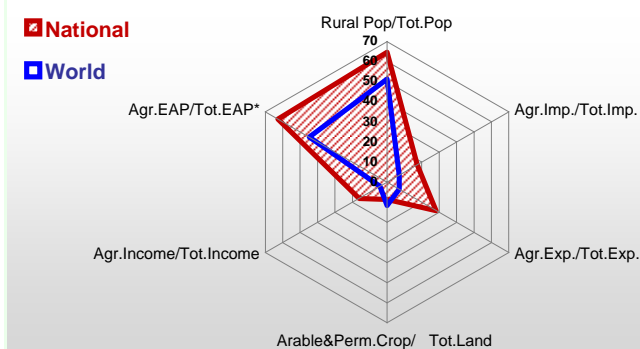
Population ^{04 *}	12 932
Per Capita Income ^{02 **}	521
Per Capita Agricultural Income ^{02**}	139
Total Exports ^{02 ****}	2 200
Total Imports ^{02 ****}	1 540
Agric. External Assistance ^{99-01 ***}	84 523
Food Consumption Inequality (G) ^{ly}	0,17
Income Inequality (G) ^{ly}	0,57
Land Inequality (G) ^{ly}	-
Undernourished Population % ⁰⁰⁻⁰²	44



* 1000 ** \$ *** 1000 \$ **** Million \$ --- (G) : Gini Coefficient --- Income refers to GDP at 1995 Constant Prices

Agriculture In The Economy^{ly}

Resources

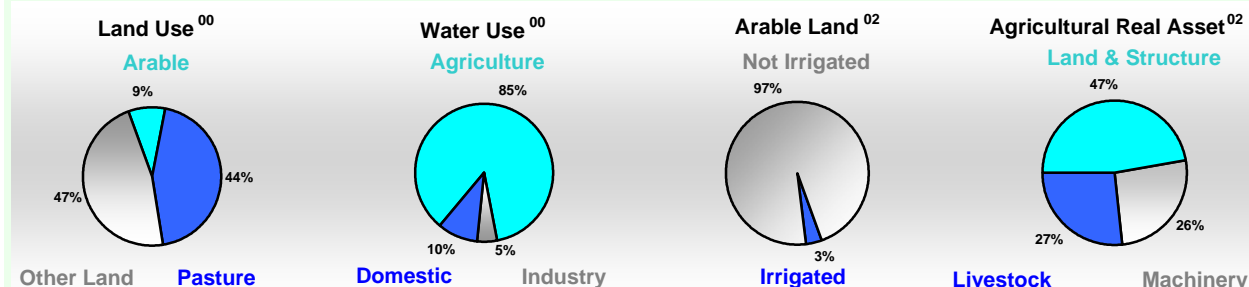


Arable Land ^{00 *}	3 220
Permanent Crops ^{00 *}	130
Pasture ^{00 *}	17 200
Cattle & Buffaloes ^{03 **}	5 753
Sheep & Goats ^{03 **}	3 580
Tractors ^{02 *}	7
Harvesters&Threshers ^{02 *}	0
Fertilizers Production ^{02 ***}	99 350
Fertilizers Consumption ^{02 ***}	110 000
Rainfall Index ^{02 (mm)}	560

* EAP : Economically Active Population

* 1000ha ** 1000heads *** Tonnes N,P₂O₅,K₂O

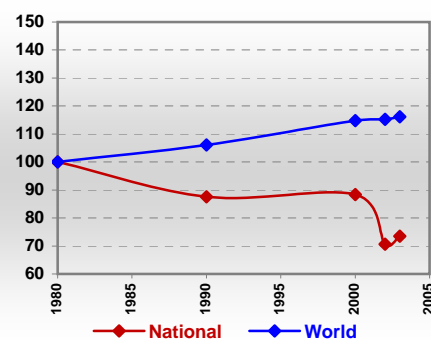
Resources Distribution



Production

Agriculture^{03 *}		Pulpwd.,Rnd&Split ^{**}	94
Cereals	1 049	Roundwood ^{**}	9 108
Meat	206	Log:Saw&Veneer ^{**}	786
Fruits & Vegetables	380	Sawnwood ^{**}	397
Roots & Tubers	212	Wood Charcoal [*]	9
Pulses	53	Woodfuel ^{**}	8 115
Oilseeds & Nuts	79	Wood Pulp [*]	42
Sugar Crops	4 000	Wood-based Panels ^{**}	77
Tobacco	180	Fisheries^{02 *}	
Fibre Crops	85	Pelagic	-
Forestry⁰²		Freshwater	15
Indust.Roundwood ^{**}	992	Demersal	-
Paper, Paperboard [*]	80	Molluscs	-

Per Capita Agricultural Production Index



* 1000Tonnes ** 1000m³

Time reference= ⁹⁹⁻⁰¹:1999-2001, ⁰⁰:2000, ⁰²:2002, ⁰⁰⁻⁰²:2000-2002, ⁰³:2003, ⁰⁴:2004, ^{ly}:Latest Available Year

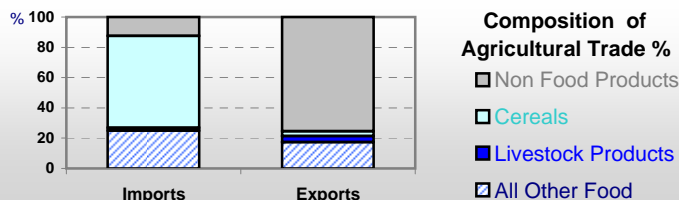


Country profiles

Zimbabwe

Trade ⁰²

Agricultural Imports *	266
% 4 Major Imports in Agr.Imp	3
% Agr. Imports in Tot. Imports	17
Fishery Imports *	2
Forestry Imports *	32
Agricultural Exports *	621
% 4 Major Exports in Agr.Exp.	63
% Agr. Exports in Tot.Exports	28
Fishery Exports *	2
Forestry Exports *	9



Trade Partners & Products

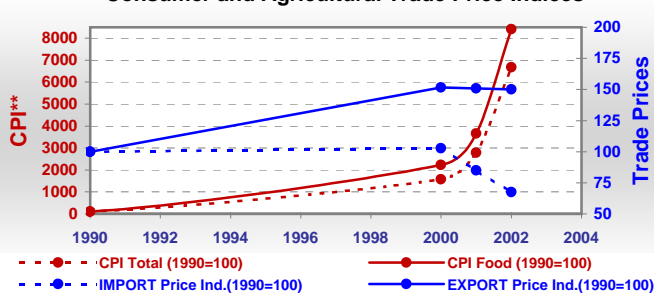
Major Import Partner	South Africa	Kenya	USA
Major Export Partner	UK	South Africa	Germany
Major Imports	Maize	Flour Maize	Oil of Palm
Major Exports	Tobacco	Cotton Lint	Sugar,C. Raw

* Million \$

Prices

Producer Prices ⁰⁰⁻⁰²	\$*	\$ Green *
Wheat	642	346
Rice	856	461
Maize	302	161
Soybean	597	320
Coffee	2 392	1 278
Tobacco	3 577	1 910
Cow Milk	391	209
Cattle (Live Weight)	585	313
Pig (Live Weight)	1 919	1 025
Chicken (Live Weight)	2 399	1 281

Consumer and Agricultural Trade Price Indices

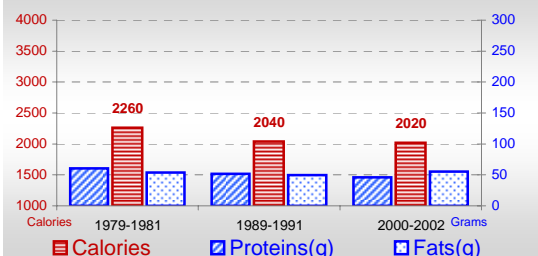


* per Tonne

** CPI : Consumer Price Index

Consumption

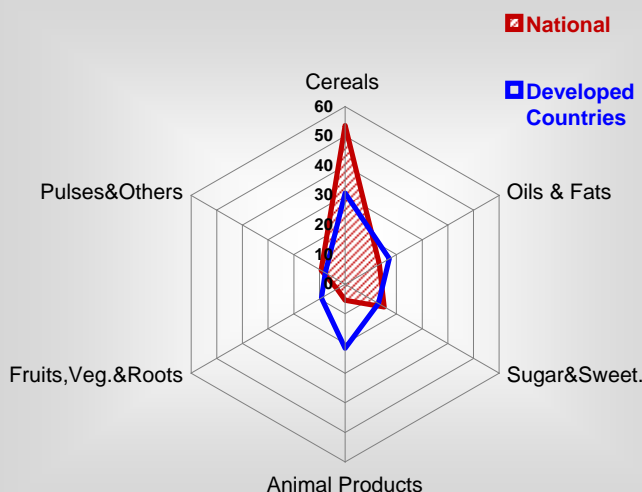
Per Capita Daily Consumption



Per Capita Daily Calorie Intake From Selected Food Items ⁰⁰⁻⁰²

Rice	13
Wheat	176
Maize	827
Sorghum	37
Potatoes	4
Cassava	39
Sugar	304
Soybean Oil	81
Palm Oil	23
Milk	30
Anim.Fats(Raw&Butter)	42
Eggs	4
Pig Meat	16
Poultry Meat	8
Bovine Meat	35
Sheep & Goats Meat	4

Source of Dietary Energy Consumption % ⁰⁰⁻⁰²



Food Balance ^{00-02 (1000Tonnes)}

Food Groups	Production (+)	Exports (-)	Imports (+)	Seed, Feed, Other Uses (-)	Consumption (=)
Cereals	1 731	91	319	210	1 749
Veg.oils	83	3	56	16	120
Sugar&Sw.	599	206	2	-10	405
Roots&Tub.	210	2	1	13	195
Meat	200	11	-	-1	190
Milk	300	34	10	29	247

Time reference= ⁹⁹⁻⁰¹:1999-2001, ⁰⁰:2000, ⁰²:2002, ⁰⁰⁻⁰²:2000-2002, ⁰³:2003, ⁰⁴:2004, ^{ly}:Latest Available Year