



## Agriculture Prospects Report (August/September 2005)



**Ministry of Agriculture, Animal Husbandry and Food**  
**Food, Agriculture and Animal Husbandry Information**  
**Management and Policy Unit (FAAHM)**  
**Kabul, 12 October 2005**

### Abbreviations

APR	Agriculture Prospects Report
DAP	Di-Ammonium Phosphate
FAAHM	Food, Agriculture and Animal Husbandry Information Management and Policy Unit
FAO	Food and Agriculture Organization of the United Nations
FMD	Foot and Mouth Disease
MAAHF	Ministry of Agriculture, Animal Husbandry and Food
PPR	<i>peste des petits ruminants</i>
USGS	United States Geological Survey
WFP	World Food Programme

### Contact us

Comments on this publication are most welcome. Contact us at the following address:  
Haqiqatpal Ghulam Rabbani, Director, FAAHM, MAAHF

[GhulamRabbani.haqiqatpal@af.fao.org](mailto:GhulamRabbani.haqiqatpal@af.fao.org)

Mobile: +93-(0)70-284879

The FAO project “Support to FAAHM in the MAAHF” (GCP/AFG/034/GER) provides technical guidance and financial support for APR.

### Cover page

*Good quality rice (Bara) at maturity-stage and corn at grain-filling-stage  
growing under favourable conditions in Chardara district  
in Kunduz province on 4 October 2005*

*Photo courtesy: Mohamed Omar and Abdul Shukoor, FAAHM Counterpart staff*

## *Contents*

Abbreviations  
Contact Address

<b>1. INTRODUCTION</b>	<b>1</b>
<b>2. CROP PRODUCTION IN 2005</b>	<b>2</b>
<b>3. WEATHER CONDITION</b>	<b>2</b>
<b>4. CEREAL AREA, PRODUCTION, UTILIZATION AND SUPPLY</b>	<b>2</b>
<b>5. WORLD WHEAT PRODUCTION</b>	<b>3</b>
<b>6. PRICE OF AGRICULTURAL COMMODITIES AND SERVICES</b>	<b>3</b>
6.1. INTERNATIONAL MARKET PRICE OF WHEAT	4
6.2. CONSUMER PRICE INDEX	5
6.3. CURRENT PRICES	6
6.3.1. <i>WHEAT PRICES</i>	6
6.3.2. <i>LIVESTOCK AND LIVESTOCK PRODUCTS PRICES</i>	8
6.3.3. <i>LABOR COSTS</i>	10
6.3.4. <i>FERTILIZER PRICES</i>	12
6.4. REAL PRICES	13
<b>7. ADVERSE FACTORS IN CROPS</b>	<b>15</b>
<b>8. FOOD SECURITY</b>	<b>15</b>
8.1. SPECIAL PROGRAMME FOR FOOD SECURITY	16
8.2. LOCUST AND SUNN PEST CONTROL	17
8.3. GRAIN STORAGE SILOS	18
8.3.1. <i>PROGRESS UNDER GRAIN SILOS</i>	19
8.3.2. <i>PROGRESS UNDER THE CONSTRUCTION OF SMALL WAREHOUSES</i>	19
8.3.3. <i>BENEFICIARY FEEDBACK</i>	20

### **Tables**

Table 1: The 2005 cereal balance sheet

Table 2: Forecasted production of wheat in the World in 2005

Table 3: Amount of chemical used and area cleaned under the 2005 locust control

Table 4: Amount of chemical used and area cleaned under the 2005 Sunn pest control

Table 5: Procurement progress of small grain silos

Table 6: Proposed construction sites for the small-warehouses

### **Maps**

Map 1: Afghanistan with provincial boundaries

Map 2: Wheat balance in 2005 by province

### **Annexes**

1. Assumptions involved in cereal-utilization calculation
2. Area and production of wheat in 2005 by province
3. Wheat balance in 2005 by province
4. National Consumer Price Index (CPI) for September 2004 to August 2005 at 2004 constant price
5. Kabul CPI for October 2004 to September 2005 at 2002 constant price
6. Monthly retail market prices of selected 17 agricultural commodities and services in 32 provincial market centers (January to September 2005)
7. Weekly retail market prices of 8 commodities in six markets (July-September 2005)
8. Additional information on agricultural prospects by province

# Ministry of Agriculture, Animal Husbandry and Food

## (MAAHF)

### Food, Agriculture and Animal Husbandry Information Management and Policy Unit (FAAHM)

### Agriculture Prospects Report (August/September 2005)

#### 1. Introduction

This report supersedes Agriculture Prospects Report (APR) released by MAAHF on 2 August 2005. The purpose of APR is to: (a) provide the estimates of annual crop area and production, (b) quantify the cereal surplus or deficit, (c) identify critical areas needing emergency interventions and/or development initiatives, and (d) present retail market prices of agricultural commodities and their analysis. The APR data are mostly presented at the provincial levels.

The present issue is the fourth in the series of bi-monthly APR. The first APR was released in early-March 2005. It provided preliminary forecasts of this year's wheat and rice production. The ensuing two issues produced in mid-May and early-August provided national and provincial data on cereal supply, demand and surplus/deficit.

The primary sources of information for APR are provincial agriculture offices. Radio and telephone are means of communication used for more frequent contacts with them. Information and data provided by other sources (e.g. technical departments in MAAHF, FAO, WFP, USGS Agro-met project) are also used.

From January 2005 MAAHF started collecting the prices of 17 agricultural commodities from 32 provinces on a monthly basis. From August 2005, MAAHF started collecting weekly market prices of: (i) local wheat, (ii) flour, and (iii) imported wheat from the provinces. From the first week of October, the MAAHF weekly market prices are broadcasted on the AM radio programme of MAAHF (*Karana*), which has a national outreach. MAAHF is introducing an improved system of monthly and weekly price collection from November 2005. The new system in 34 provinces will cover over 25 commodities on a monthly basis and the three commodities mentioned above on a weekly basis. The price data collection system of MAAHF is demand-driven. MAAHF is committed to providing the users with the price data on a regular basis and the price data analysis on a bi-monthly basis (together with APR). In near future MAAHF plans to gather and disseminate wholesale and producers' prices also. It is obvious that the system needs to be strengthened as regards data quality/gap, timeliness, scope, coverage and frequency of reporting.

Conduct of probability sample surveys is essential for bringing improvements in the reliability of current agricultural data. Through FAO's support, in August/September MAAHF/CSO devised, tested and implemented probability sample survey in six provinces (Logar,

Nangarhar, Kunduz, Balkh, Hirat, and Bamyan). The purposes of the survey were to collect: (i) data on crop area and yield at the household level and (ii) basic agricultural data at the district level. Data of the survey are being processed.

## **2. Crop production in 2005**

This year's bumper harvest was possible because of the three factors. Firstly, both winter and spring crops benefited from the well above normal precipitation amounts. Secondly, Integrated Pest Management (IPM) played a very successful role, especially as regards the locust and Sunn pest control. Thirdly, increased agricultural inputs use, better-managed irrigation application, and ameliorated crop husbandry practices have shown tangible impacts on this year's agricultural production. The pasture and water availability in pastoral areas also benefited from the good rainfall.

On the flipside, this year's crop loss due to the floods is moderately higher than a normal year. Rust inflicted slightly above normal damage on wheat areas in parts of the country. Livestock deaths were reported due to diseases, floods, and inadequate feed and poor animal nutrition during winter.

## **3. Weather condition**

The weather condition this year was favorable for the winter and the spring crop growing. The accumulated precipitation from October 2004 to February 2005 was well above normal in all parts of the country. Most of the locations in the country received well above normal precipitation in March 2005 also. The precipitation in April was observed to be below normal for a few stations that reported.<sup>1</sup> Rainfall pattern in April 2005 in North-West Frontier Provinces of Pakistan was very good for the standing crops.<sup>2</sup>

The country experienced higher than Long-Term Average (LTA) rainfall amount in May and June, except in the southern and south-western parts. The amount of rainfall in July in the east, east-central and southern regions was higher compared to the corresponding LTAs. Other regions experienced lower than LTA or no rainfall amount in the month.<sup>3</sup>

## **4. Cereal Area, Production, Utilization and Supply**

Total production of cereal in 2005 is estimated at 5.24 million tonnes, of which wheat is estimated at 4.27 million tonnes. Milled rice production is expected to be 325,000 tons. Maize and barley production are estimated at 315,000 tons and 337,000 tons, respectively.

Total cereal utilization in 2005 is estimated at 5.8 million tonnes, of which 4.7 million tonnes (81%) will be wheat. The commercial import requirement in 2005 is estimated at 440,000 tonnes. This includes wheat (337,000 tonnes), milled rice (101,000 tonnes), and corn (2,000 tonnes). (Table 1; next page)

---

<sup>1</sup> Source: USGS Agro-meteorology Project

<sup>2</sup> Source: Pakistan Agro-meteorological Service

<sup>3</sup> Source: USGS Agro-meteorology Project

Given the bumper harvest, the year ending stock-build-up of wheat is forecast at 100,000 tonnes.

**Table 1: The 2005 Cereal Balance Sheet ('000 tonnes)<sup>4</sup> for Afghanistan**

<b>Description</b>	<b>Wheat</b>	<b>Rice (milled)</b>	<b>Maize</b>	<b>Barley</b>	<b>Total</b>
<b>A. Domestic availability</b>	<b>4,386</b>	<b>325</b>	<b>315</b>	<b>337</b>	<b>5,363</b>
Food aid (WFP)	120	--	--	--	120
Domestic production	4,266	325	315	337	5,243
<b>B. Utilization</b>	<b>4,723</b>	<b>426</b>	<b>317</b>	<b>337</b>	<b>5,803</b>
Food use	3,688	392	46	23	4,149
Animal feed	--	--	208	236	444
Seed provision	295	11	16	26	348
Losses	640	23	47	52	762
Year ending stock-build-up	100	--	--	--	100
<b>Commercial Import (B-A)</b>	<b>337</b>	<b>101</b>	<b>2</b>	<b>--</b>	<b>440</b>

## 5. World Wheat Production<sup>5</sup>

World wheat production in 2005 is forecast at 612 million tonnes, which is about 2% lower than the record harvest in 2004, but still well above the average of the past five years. Wheat production in Asia has been forecasted at 263 million tonnes, an increase by 3.6% over 2004. Wheat production in some of Afghanistan's neighboring countries is higher by 7% to 8% than the last year. (Table 2)

**Table 2: Wheat production in the World and the neighboring countries<sup>6</sup>**

<b>Area</b>	<b>Production (million tonnes)</b>		<b>% increase/decrease compared to 2004</b>
	<b>2004</b>	<b>2005</b>	
World	625.9	614.1	-1.9
Asia	253.6	262.7	+3.6
Pakistan	19.5	21.1	+8.2
Iran	14.0	15.0	+7.1
Kazakhstan	9.9	10.7	+8.1

## 6. Price of agricultural commodities and services

Like elsewhere, commodity prices in Afghanistan are influenced *inert alia* by country's supply and demand, volume of import and export, efficacy of transport network, government's price/fiscal/trade policies, neighboring countries' policies, and macroeconomic environment.

<sup>4</sup> See Annex 1, Annex 2 and Annex 3 for details

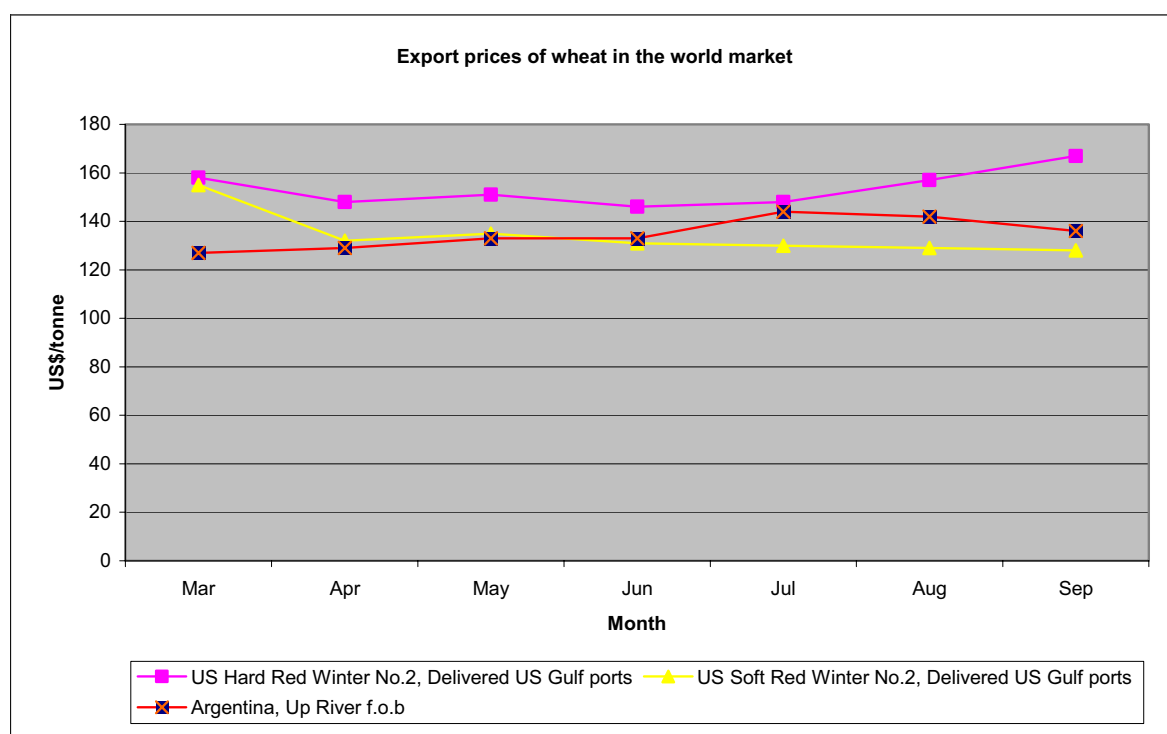
<sup>5</sup> Source: FAO

<sup>6</sup> Source: FAO

In a free market economic environment commodity prices play a key role in all of the above. MAAHF needs an operational price information system because: (i) commodity prices are needed for the identification of market-sheds<sup>7</sup> and thin-markets<sup>8</sup>; (ii) they provide seasonal values of the commodities across markets; (iii) they are indicators of demand and supply of the commodities; (iv) they act as incentives or disincentives for production (for farmers) and commodity's internal/external trade; (v) they are indicators of trade patterns; (vi) they are useful in estimating future supply and demand; (vii) they are needed for analyzing: (a) price relationship of a commodity across market-sheds, (b) price relationship among commodities in the same market and (c) intra-year seasonal price behavior of a commodity or similar commodities.

### 6.1. International market price of wheat <sup>9</sup>

International export market price of wheat in September ranged between US\$136-167 per tonne (6.7-8.2 Afs/kg). July and August saw mixed trend in the world market prices of hard and soft wheat: a steady increase in price of US hard red winter No. 2 was observed, whilst the prices of US soft red winter No. 2 and Argentina Trigo Pan showed a moderate downwardly trend.



<sup>7</sup> Geographical areas where the price tend to move and behave together

<sup>8</sup> These are markets with small volumes of trades. Prices in thin-markets are unpredictable and unreliable.

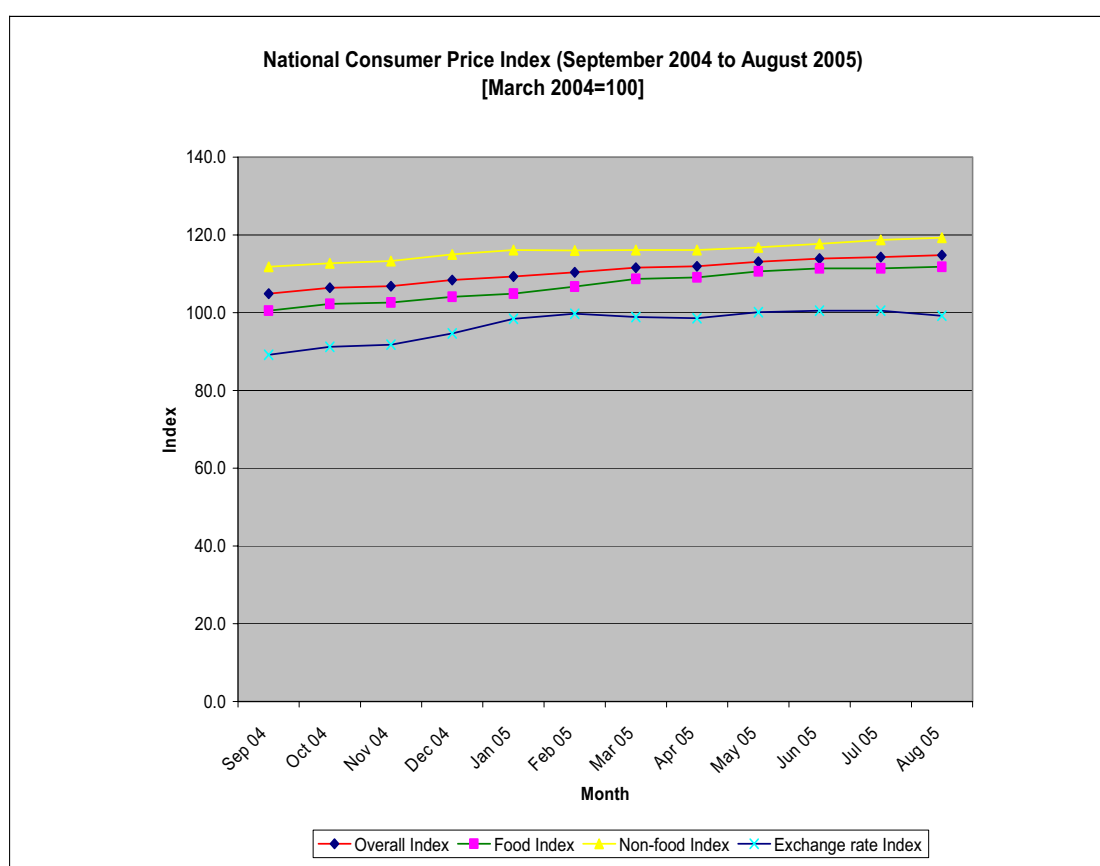
<sup>9</sup> Source: International Grain Council and FAO



## 6.2. Consumer Price Index<sup>10</sup>

National Consumer Price Index (CPI) of Afghanistan is the weighted average of the CPIs for Kabul, Herat, Kandahar, Jalalabad, Mazar-e-Sharif and Khost. The weights assigned to food and non-food items in the national CPI calculations are 60.6% and 39.4%, respectively. March 2004 is the base-period<sup>11</sup> used for the calculation. (Annex IV)

Compared to September 2004, national CPI in August 2005 was higher by almost 10 percent points. The Exchange-rate Index also rose exactly by 10% points in the reference period. The linear correlation coefficient between monthly CPI and the monthly Exchange-rate Index is high (0.92) and highly significant. This suggests that the inflation in the country has been greatly influenced by the movements in the exchange-rate.

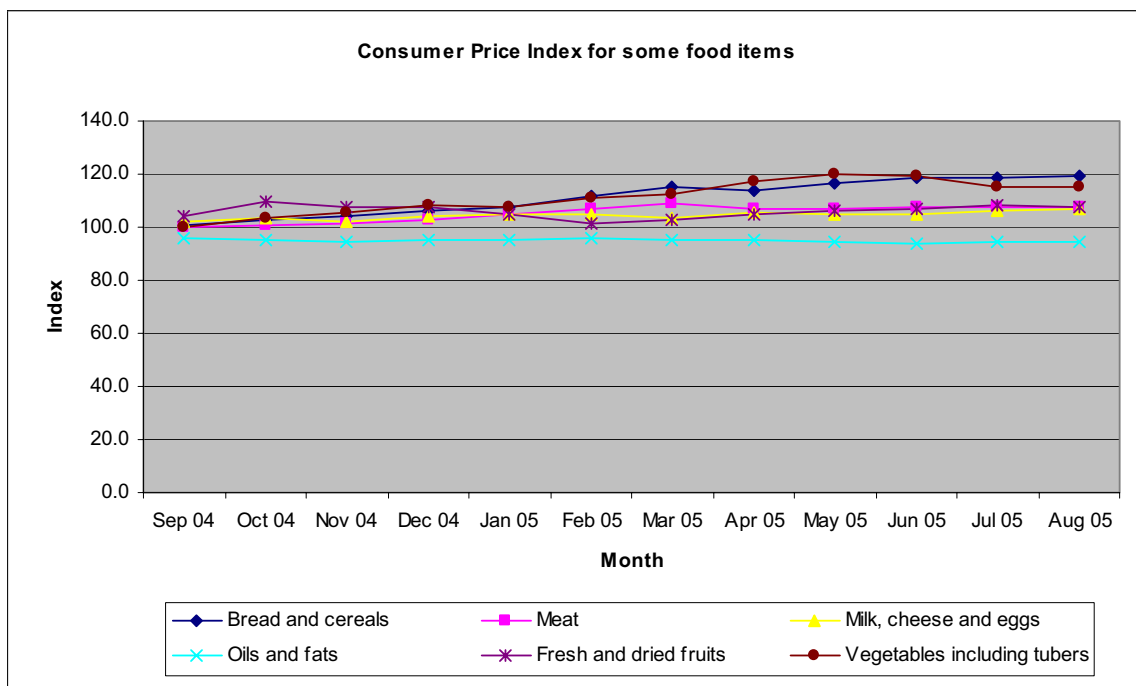


With monthly increase in the national CPI between 0.1% and 1.5%, annual increases in the CPI of the food and non-food items were 11.3 and 7.5 percent points, respectively. Bread and cereal – which have one-fourth share in the overall CPI – showed highest increase (up by 18-percent points) among the food items. The price increases were substantial (up 15 percent-points up) also in the case of vegetables and tubers. The increase in the prices of livestock

<sup>10</sup> Source: Central Statistics Office (CSO). CPI is a composite index that can be used for measuring inflation.

<sup>11</sup> Price in March 2004 = 100

products (meat, milk, cheese and eggs) in the one-year period was 5 percent point, which is quite reasonable. Consumer prices of oils and fats exhibited slightly decreasing trend.



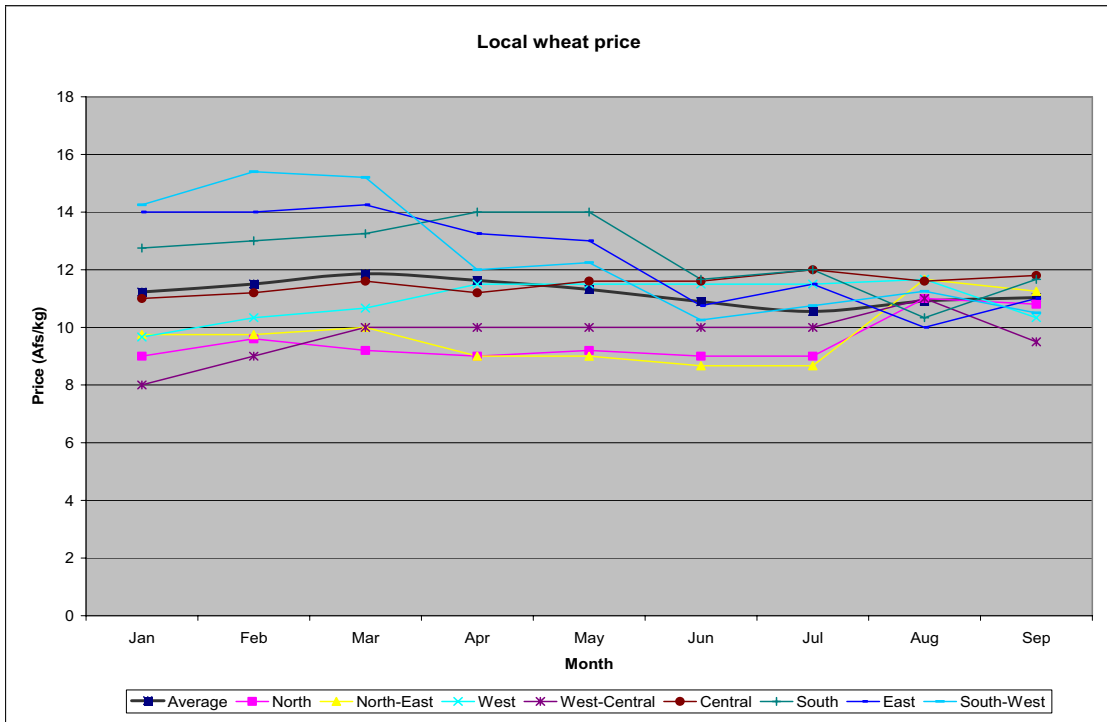
### 6.3. Current Prices

Monthly retail market prices of 17 commodities by province are presented in Annex VI. The purpose below is to summarize and analyze these data at the regional levels.

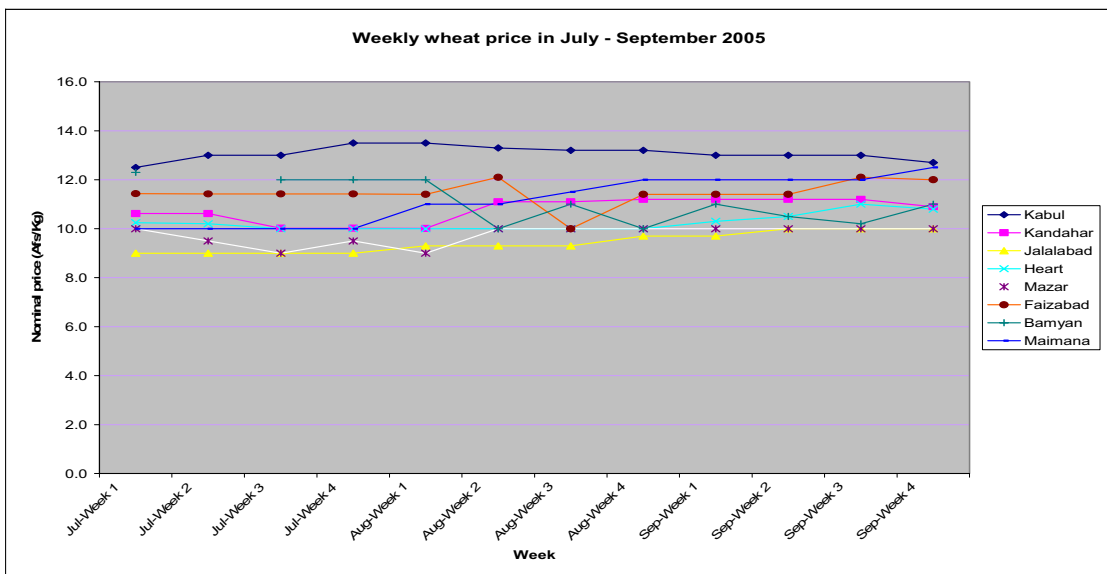
#### 6.3.1. Wheat prices

The market price of wheat in 2003 was the record-lowest in the main breadbasket areas (north and north-east). The year had bumper harvest of wheat. The 2004 was one of the worst drought years. The price of local wheat (from 2004 production) was slightly above Afs 11 per kg in January-March 2005. The price variation in the period across provinces was very wide and the price-trend showed slightly increasing tendency. The latter fact is consistent with the demand for wheat seed for the spring planting. The wheat price decreased moderately in April, May, and part of June, which can be explained satisfactorily by the bumper harvest prospects. A market-failure possibility was considered in May and early part of June. After June the prices remained stable especially in the north and north-east. In September the average price of local wheat was Afs 11. The price variations across provinces also narrowed considerably by September.

The price levels of wheat after harvest indicate that the local grain market this year has performed well under the circumstances. Past trends suggest that the price of local wheat reaches highest level is October/November, which is mainly due to the marked decrease in market arrivals of wheat (after about 3 or 4 months of sales by farming households) and the demand for wheat-seed for the autumn planting.

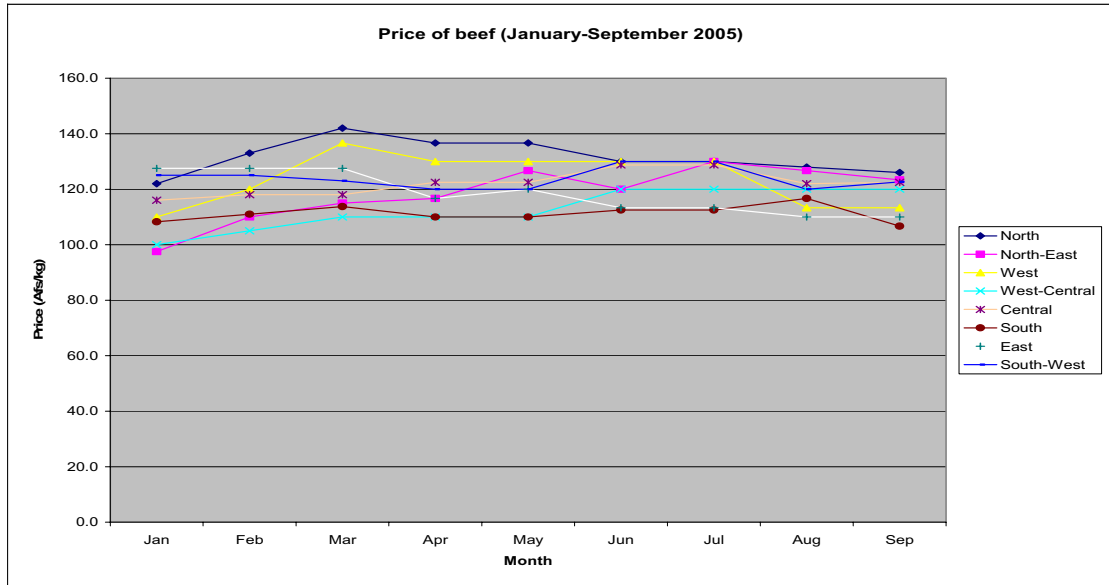


Weekly wheat price reported by WFP also shows that the wheat price has been stable after the main harvest.

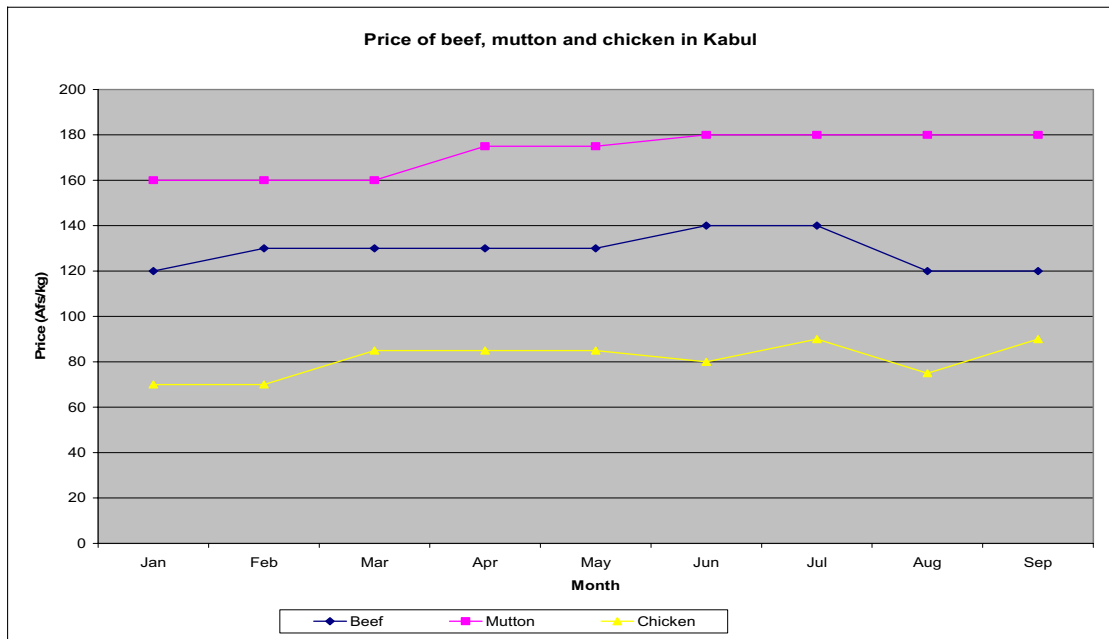


### 6.3.2. Livestock and livestock products prices

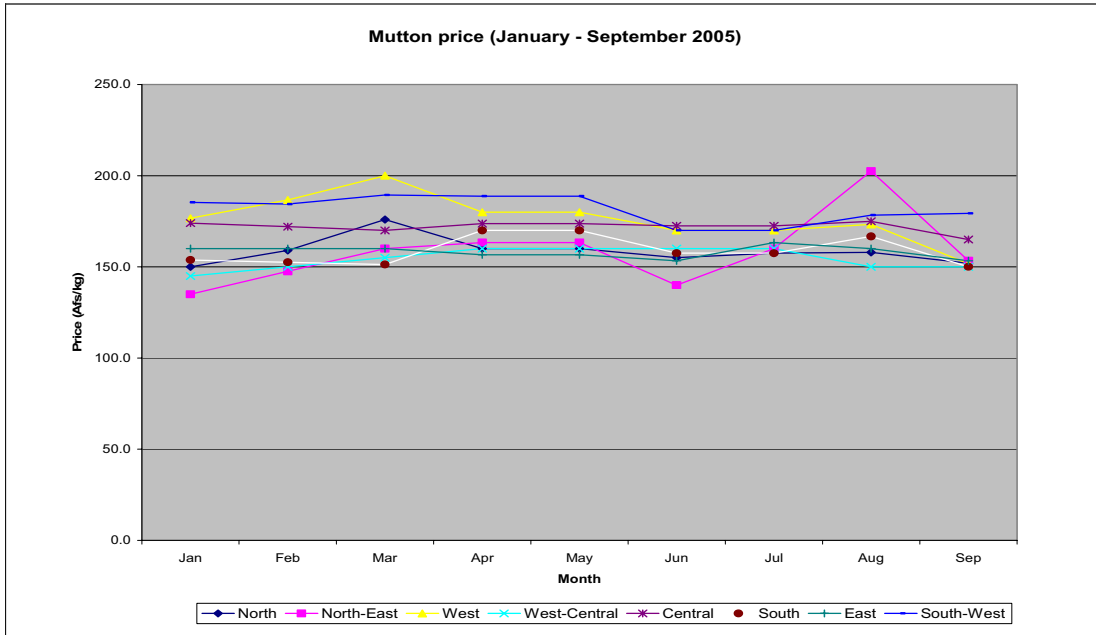
North-east and west-central regions experienced gradual increase in price of beef in the January-September period, but the price in the same period in the east showed a decreasing trend.



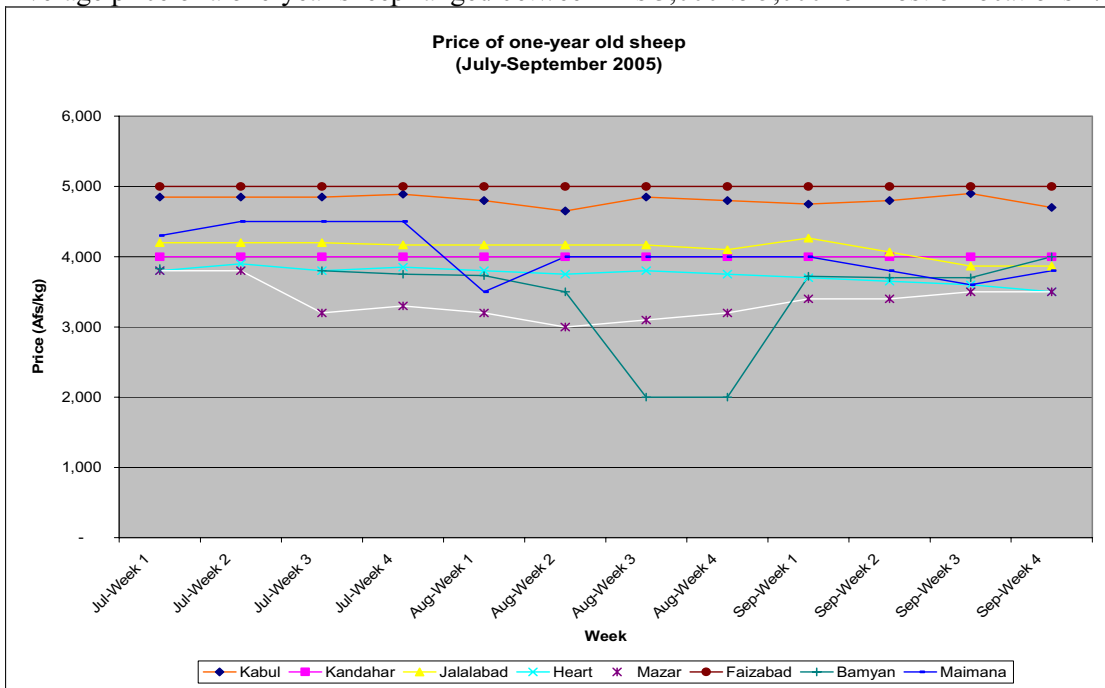
For other markets, price of beef increased up to March. It became generally cheaper after March. By September beef-price in these markets reached the level of January 2004 price. The difference in beef price across markets narrowed (Afs 110-125/kg) in June-September.



There was slight increase in price of mutton up to March; then decrease or at par price up to June/July and slightly upwardly movement from July, before reaching or crossing the level of January 2004 price in August/ September 2005. The difference in mutton-price across markets narrowed in July, but did not stabilize.



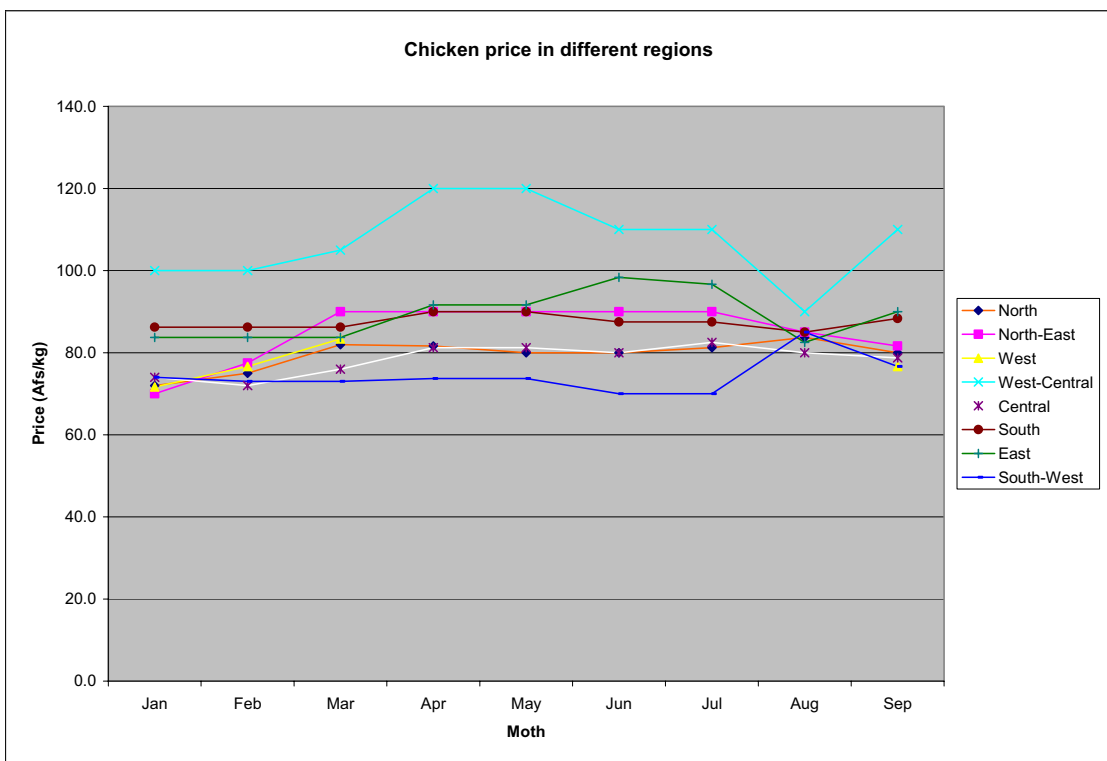
Average price of a one-year sheep ranged between Afs 3,000 to 5,000 for most of locations<sup>12</sup>.



<sup>12</sup> Source: WFP

The cheapest sheep were found in the north, but the seasonal price variations in these areas were also much higher. The price range for sheep across provinces was highest in July-September (between Afs 2,000 to 5,000). Seasonal variation in the price of sheep was lesser in regulated markets.

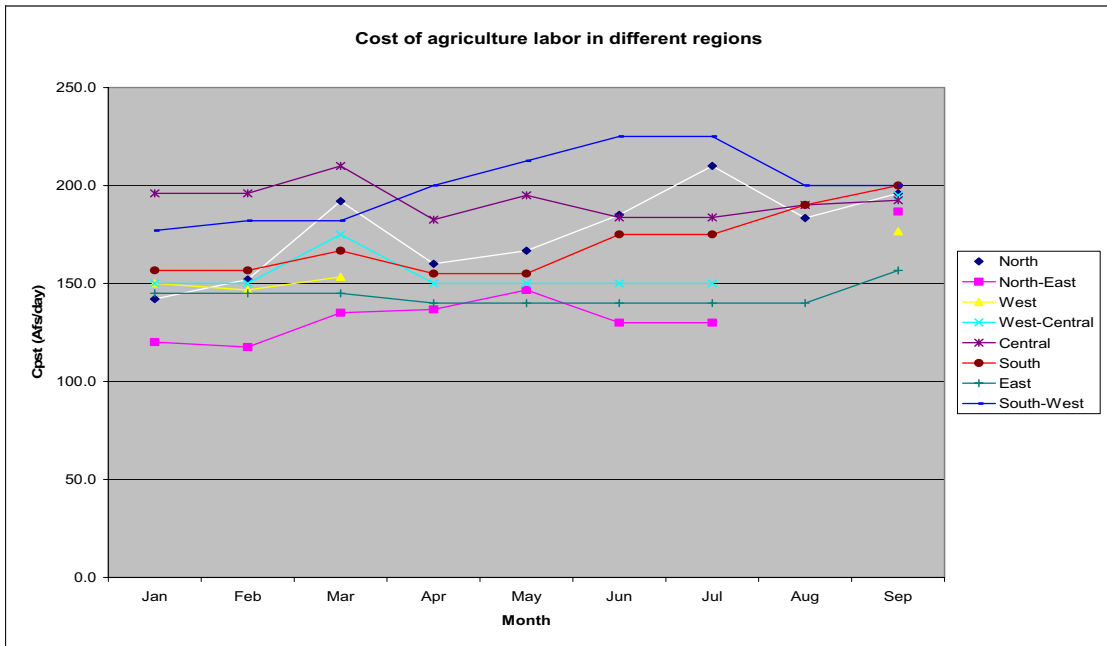
The price of chicken showed considerable spatial variations (70-120 Afs/kg). However, it exhibited a consistent seasonal price movement pattern up to May. The price moved moderately higher from January to May. In the East and West-Central region there was a decrease in the price of chicken from June to August, but the price in September was higher than in August. In other areas, the price rose higher from June to August, before having a mixed trend in September. The chicken prices across regions were least variable in August.



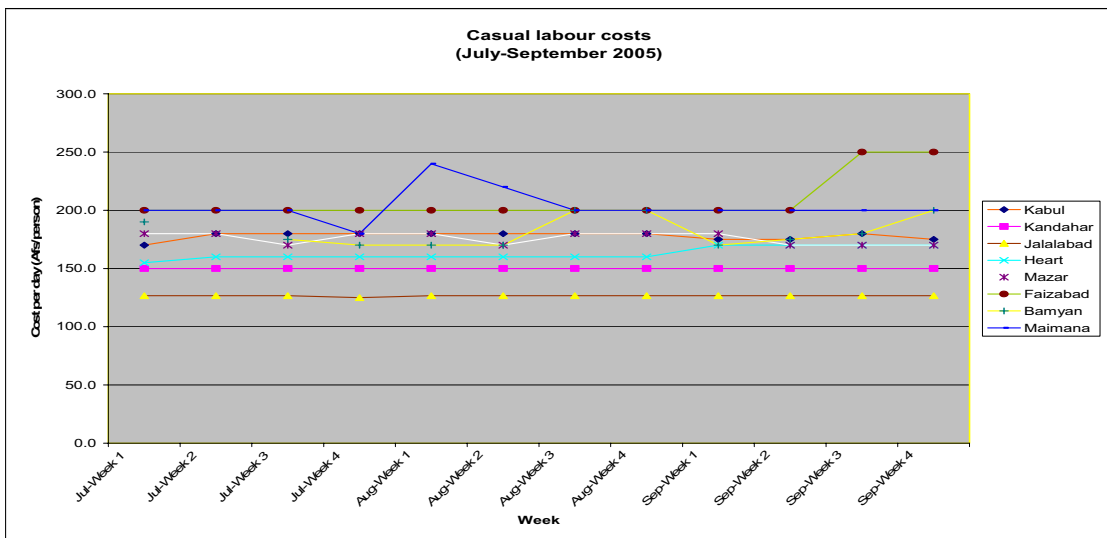
### 6.3.3. Labor costs

Agriculture labor costs around 125-225 Afs/day. Highest agricultural labor costs were reported from South-Western, Central and Northern Regions.

The price levels presented below generally reflect the seasonal increase or decrease in demand for agricultural labors. January is a lean period for agricultural operations. Thereafter there is some demand for agricultural labor in February/March (for spring cropping). The peak demand is in June/July and October/November, when main farm operations are on-stream.



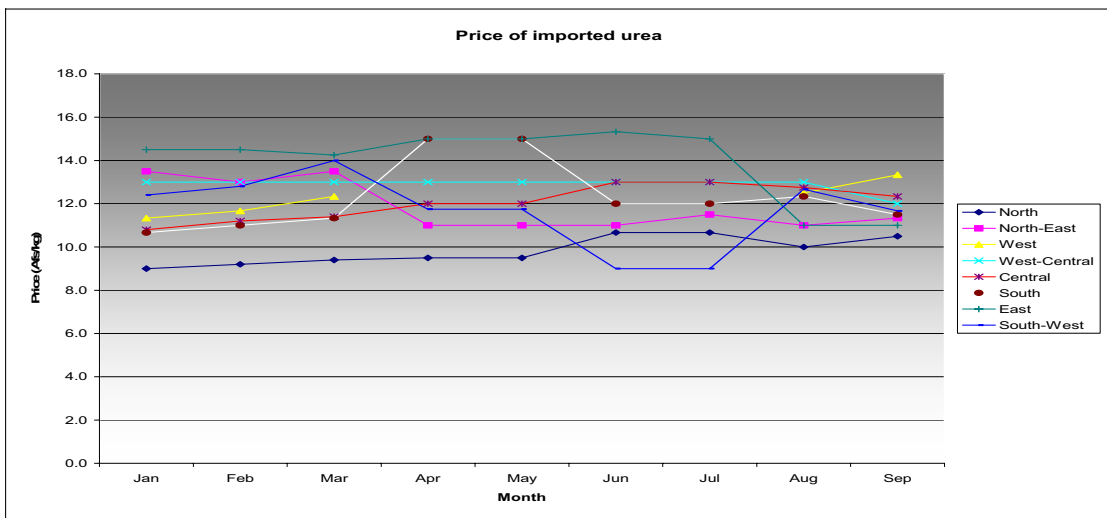
The cost of casual labor<sup>13</sup> ranges between 125-250 Afs/day. It shows not much seasonal variations. The costs are lowest in Jalalabad (East), Kandahar (South-west) and Herat (West), in that order. North and North-East are unstable market for casual labor. The costs are stable in Central, East, South-west, West-Central (partly) and West.



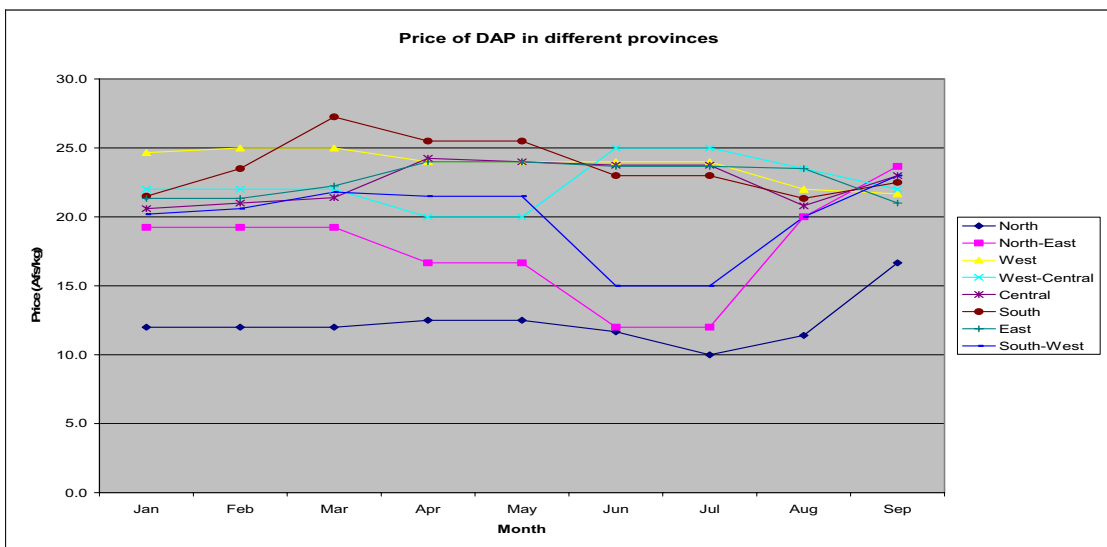
<sup>13</sup> Source: WFP

### 6.3.4. Fertilizer prices<sup>14</sup>

The price of imported urea in September ranged 11-13 Afs/kg on average. The price was stable after April in the entire reporting period in the West-Central region and in the north and north-east. The urea price in the eastern region is also quite stable (note that August/September prices for Nuristan are missing). The Central parts experienced slight rise in price from May to July. The price patterns suggest that South and South-West are thin markets for urea. From June the price of urea has consistent pattern across regions.



Before August spatial variation in the case of DAP prices was very large.



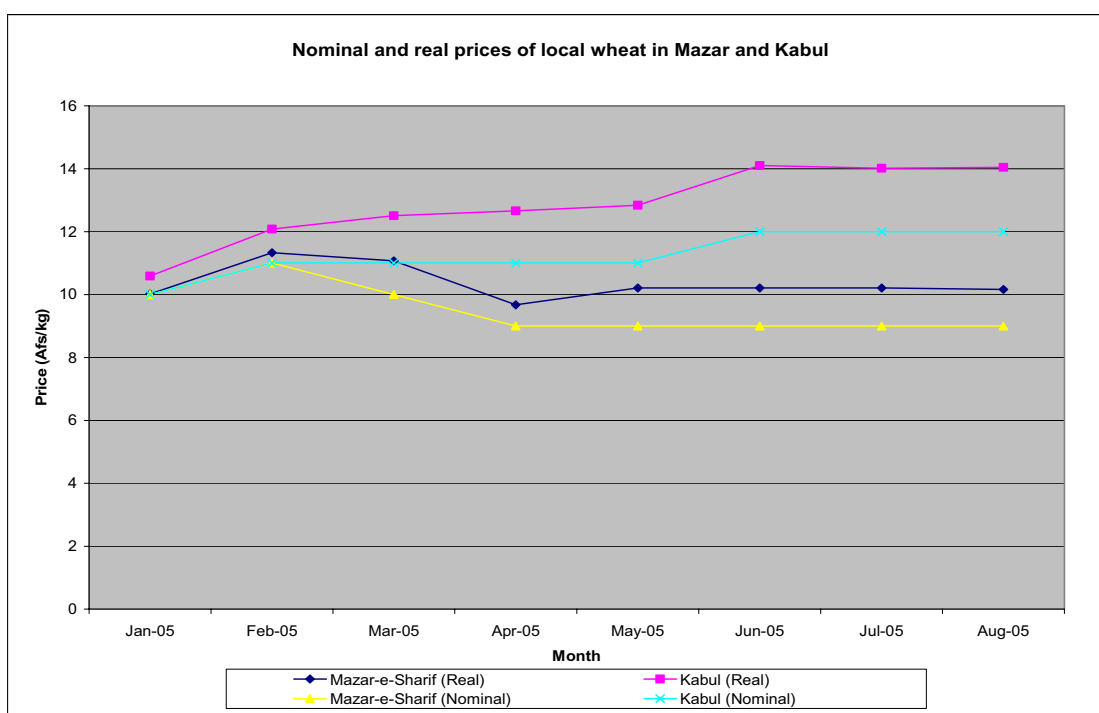
<sup>14</sup> The price of fertilizer per bag expressed in Afs/kg



Part of these variations in DAP prices across provinces can be attributed to the marked difference in the quality/price of DAP available in the markets and the transportation costs involved. Price in the east (Afs 22-24/kg) and west (Afs 22-25/kg) were most stable. The seasonal prices in the case of north, north-east, south-west and south showed quite similar pattern.

#### 6.4. Real Prices

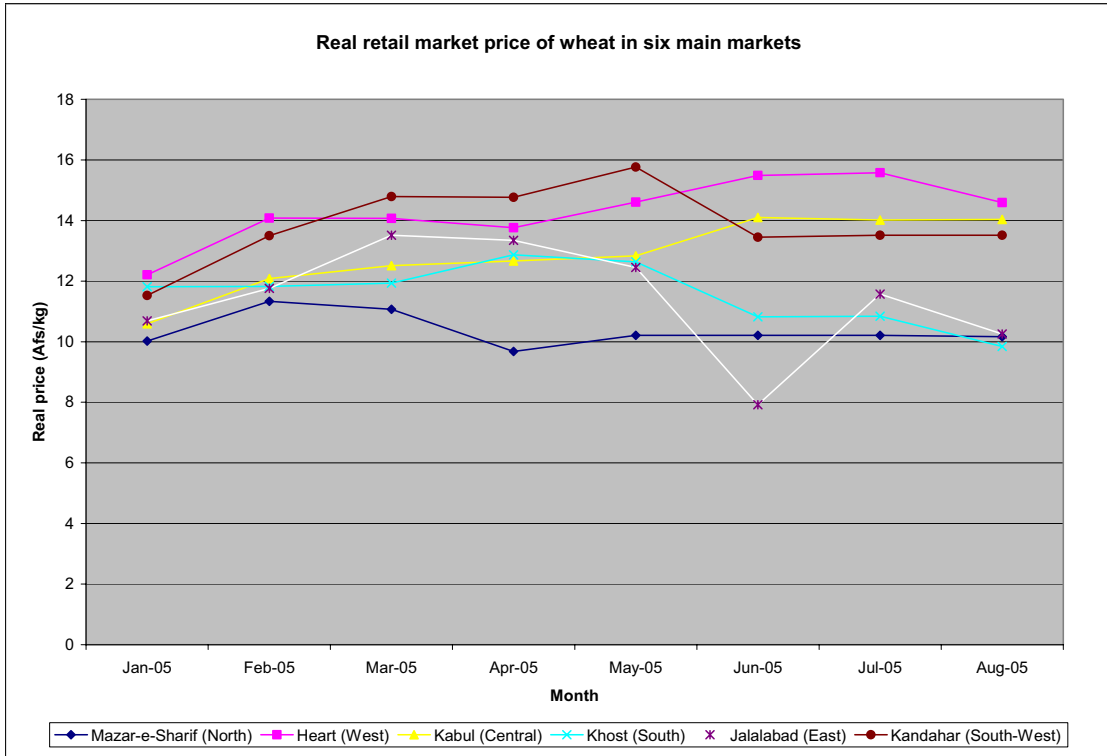
Nominal and real prices<sup>15</sup> of wheat in Mazar and Kabul (two typically supply and deficit areas) are presented in the figure below.



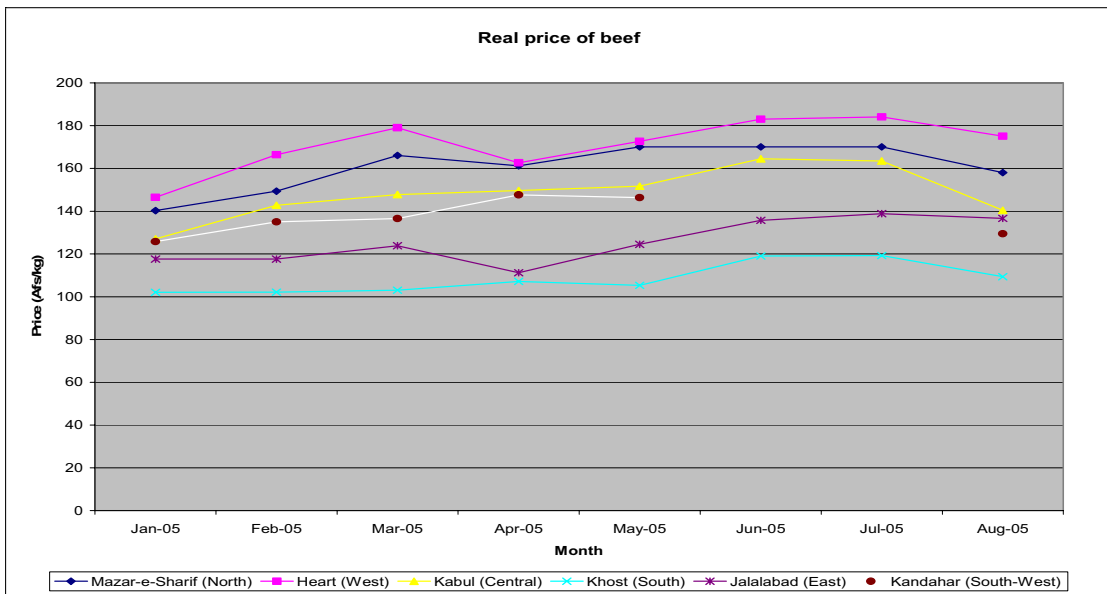
After the harvest, wheat prices in Mazar and Kabul have been stable up to September, both in nominal and real term. The real price of wheat in Mazar is higher than its nominal price by 11%, compared to 17% more in Kabul. On average the difference between the real prices of wheat in Mazar and Kabul is Afs 4/kg, while the nominal price difference is 3 Afs/kg. This suggests that, as compared to the price in the surplus areas, the inflation distorted the price of local-wheat in urban areas moderately more. The distortion is not noticeably high though.

<sup>15</sup> Inflation-deflators have been used in the calculation of real prices. March 2004=100.

Like nominal price, real prices of local wheat in all areas showed very stable or slightly downwardly trend after the harvest.



Real price of beef in various regions shows a generally consistent pattern of seasonal price movement. This is very interesting.



## **7. Adverse Factors in crops**

Crops in fifteen provinces were adversely affected by the floods. The locust was seen mainly in Baghlan, Balkh, Samangan, Kunduz, Juzjan, Nangarhar, Faryab, Saripul, Kabul, Wardak and Ghor. Preventive and control measures against the pest were taken at the earliest two stages of the pests' life cycle and potentially huge loss of cereals and pastures was avoided, thanks to the efforts made by the donors and FAO. The pest was contained in all areas, except in the remotest (mined) areas of Kunduz and Balkh.<sup>16</sup>

Sunn pest was seen mainly in Jawzjan, Faryab, Saripul, Badghis, Hirat, Kunduz, Khost, Ghor (especially in Charsada district), Paktiya, Balkh, Samangan and Helmand. The Sunn pest control was also a great success this year although the delivery of the pesticide was slightly delayed. Sunn pest infestation is on rise annually and it will cause more damages to crops in the coming years if its mechanical or chemical control, in that order of preference, is not facilitated in a large scale.

This year incidence of rust in wheat was somewhat favored by moisture, especially in north, north-east and south-west regions. Rust in wheat was seen from Surobi (Kabul) and Turkhan (Nangarhar) areas. In Balkh province, three varieties of wheat - Lalmi-3, Takhar-96 and Herat-99 – were found to be seriously affected by rust. Sporadic cases of rust symptoms in wheat were found also in Nangarhar, Nimroz, Bamyan (particularly in Waras and Panjab), Nuristan and Basous village (Imam Sahib) in Kunduz. Smut was mainly seen around Parwan and Kapisa area and was also found in some fields in Nakpai, Quiche, Daulatyar Gultepa villages in Char Dara district of Kunduz.

A surge of melon fly – mainly attacking melons, water melons, other fruits, and pumpkin – has been observed in various parts of the country. The problem is most prevalent in Faryab, Jawzjan, Saripul, Balkh and Kunduz. There is a lack of appropriate environmental friendly pesticides for the control. Another prominent problem was that of the Cicadas in vineyards in the central regions of Kabul, Parwan and Kapisa.

Some more information on agriculture prospects in individual provinces can be found in Annex VIII.

## **8. Food security**

Afghanistan is 90% self-sufficient in cereal production in a good year. It will be far much easier for Afghanistan to achieve self-sufficiency in cereal production through the minimization of pre and post harvest losses in cereals. In this connection, the areas of interventions or control -- in order of priority -- are: (i) the locust, (ii) Sunn pest, (iii) proper storage facilities, (iv) rodents, (v) weeds, (vi) rust and (v) smut.

---

<sup>16</sup> Six Months activity reports, FAO/Mazar, Locust, Sunn Pest project

## 8.1. Special Programme for Food Security

“Special Programme for Food Security (SPFS) in Afghanistan – Preparatory Phase for Community-based Food Production Capacity Building” aims to pave the way for the launching of a “National Programme for Food Security” with the objectives of ensuring adequate supply of food for the population, enabling all sections of the society to have access to adequate and safe food, reducing seasonal and year-to-year variability in food supply, and accelerating the growth of the agricultural sector on a sustainable basis. The SPFS in Afghanistan is funded under FAO regular programme with a total budget of US\$551,050 for a period of over 4-years (August 2003 to December 2007).

The project uses following approaches: (i) improve water management, (ii) increase crop intensity in the pilot areas through the introduction and dissemination of improved, low cost technological packages, (iii) promote profitable crop and livestock diversification in the pilot areas in accordance with natural resources availability, climatic conditions and market potential (iv) develop an effective modality of grassroots organizations for self-help in the pilot areas, and (v) confirm technical feasibility as well as economic and financial viability of intervention in the pilot areas.

The project achieved the following in 2005:

- (i) Final draft for the up scaling of the National Special Programme for Food Security (NSPFS) prepared.
- (ii) 2 new area offices established in Tagab-e-Kishm district of Badakhshan and Behsood 2<sup>nd</sup> part district of Wardak province.
- (iii) 4 training courses on beekeeping and poultry farming in Taluqan, Tagab-e- Kishm and Sorkhrod districts organized.
- (iv) Organized field days on beekeeping for 96 participants in Taluqan
- (v) Demonstrated 4 poultry farms in Sorkh Rod district.
- (vi) 100 demonstration plots of 0.4 ha each in Behsood 2<sup>nd</sup> part district in Wardak province organized.
- (vii) Training and demonstration of 680 plots of improved irrigated & rain fed wheat seed established in Taluqan district continued.
- (viii) Training and demonstration of 600 kitchen garden plots of vegetables (Onion and Turnip) and 600 Kitchen Garden demonstration on (Okra) in Sorkhrod district continued.
- (ix) Training and demonstration of 66 pits constructed for promotion of organic fertilizer in Taluqan district continued.
- (x) Training and demonstration of 10 honey bee farms in Taluqan district continued.
- (xi) Wheat threshers/threshing demonstrated to 5 agricultural cooperatives (600 members) in Sorkhrod district.

- (xii) Demonstrated 6 beekeeping farms (total 60 colonies) to 6 village Shuras in Tagab-e- Kishm district.
- (xiii) 5 agricultural cooperatives and 6 village Shuras were organized in Taluqan, Tagab-e- Kishm and Sorkhrod districts.

Following activities will also be completed in 2005:

- Upscale the project in November 2005 by formulating a comprehensive national programme.
- Upgrade artificial insemination centers in Taluqan district.
- Provide training to the government counterparts and the beneficiaries by implementing training courses and field days.
- Establish wheat-seed-production demonstration plots.

## 8.2. Locust and sunn pest control

From 2002 FAO has coordinated emergency control programmes against the locust in northern Afghanistan. The 2005 campaign against locusts started at the earliest two stages of the locusts' life cycle. Due to the timely and effective interventions, there were "diminished" or "insignificant" infestations of the locust this year. Had there been uncontrolled outbreak of the said pests, there would have been substantial loss of cereals.

It is obvious that there is a need for massive donor support in order to control the locust and Sunn pest annually. There is a window of opportunity to address this problem in a sustainable way through the expansion of the already initiated interventions by MAAHF and FAO. Following physical progress were made by FAO in this regard.

The following table shows the activities and achievements of the locust control campaign in 2005.

**Table 3: Amount of chemical used and area cleaned under the locust control**

Province	Amount of chemical used ( liters)		Area cleaned (ha.)		
	Daltamethrin	Dimilin	Daltamethrin	Dimilin	Total
Samangan	2,460	3,500	6,150	11,666	17,816
Baghlan	3,700	2,820	9,250	30,833	40,083
Kunduz	6,350	2,800	15,875	52,916	68,791
Saripul	--	200	--	666	666
Faryab	200	--	500	--	500
<b>Total</b>	<b>21,450</b>	<b>12,165</b>	<b>48,625</b>	<b>105,564</b>	<b>154,189</b>

The table below summarizes the activities and achievements of Sunn pest campaign of 2005.

**Table 4: Amount of chemical used and area cleaned under the Sunn pest control 2005**

Province	No. of nets distributed	Amount of chemical used (litre)		Area cleaned (ha.)		
		Daltamethrin	Dimilin	By nets	By chemical	Total
Balkh	675	--	--	1,350	--	1,350
Samangan	300	--	--	600	--	600
Faryab	17,000	9,000	260	34,000	36,000	70,000
Saripul	5,000	3,700	200	10,000	14,800	24,800
Jawzjan	6,000	2,700	--	12,000	10,800	22,800
<b>Total</b>	<b>28,650</b>	<b>15,400</b>	<b>460</b>	<b>57,950</b>	<b>61,600</b>	<b>119,550</b>

For the Sunn Pest control in Heart, 4,000 litre of chemicals and 10,000 insect collection nets were sent. The Sunn Pest control campaign of 2005 was declared closed on 30 July 2005.

### 8.3. Grain Storage Silos

Over 14,200 grain storage silos are being distributed to farmers in seven provinces of Afghanistan, thanks to an FAO project (OSRO-AFG-408-GER) funded by the Government of Germany.



A grain silo provided by the project is being taken to a farm household

The aim of the project is to help reduce post-harvest losses, improve grain quality, increase the income of farmers by allowing them to sell grain during the off-season when prices are more favorable to them, and enhance household food security. The immediate objectives of the silos project are to: (i) locally construct and distribute, through different stakeholders, small metallic silo grain storage containers to farming households, and (ii) rehabilitate 10 Community Warehouses. Main beneficiaries of this pilot project will be 14,000 households and 10 communities in seven grain-producing provinces. This \$2.4 million project is to achieve a storage-capacity of 10,000 tons from small metallic silos and 250 tons through ten Community Warehouses.

### **8.3.1. Progress under Grain silos**

The production and distribution of the silos is progressing very well indeed. Project-sponsored, locally produced small metallic silos have grain storage capacities from 250 kg to 1,800 kg. (Table 5)

About 305 local tinsmiths belonging to 30 districts across seven provinces have been contracted for the fabrication of these silos. The direct beneficiaries are being trained by the NGOs on the use and maintenance of the silos.

The silos would provide an advanced grain storage capacity of about 8,500 tonnes. A total of 12,484 silos (88% of the target) have been produced and delivered already. By the third week of October 14,203 silos will have been produced and distributed to the targeted beneficiaries.

**Table 5: Procurement progress of small grain silos**

Province	No. of Districts covered by the project	Beneficiaries by silos storage capacity (Target)					Silos already produced and delivered
		Total	250 kg	500 kg	900 kg	1800 kg	
Takhar	4	<b>1,612</b>	522	402	438	250	1,612
Baghlan	4	<b>751</b>	107	243	401	--	751
Kunduz	7	<b>4,113</b>	1,950	1,405	582	176	4,113
Samangan	1	<b>500</b>	165	163	42	130	500
Balkh	3	<b>2,145</b>	547	517	414	667	1,516
Faryab	10	<b>4,582</b>	2,778	984	612	208	3,492
Heirat	1	<b>500</b>	183	195	49	73	500
<b>Total</b>	<b>30</b>	<b>14,203</b>	<b>6,252</b>	<b>3,909</b>	<b>2,538</b>	<b>1,504</b>	<b>12,484</b>

### **8.3.2. Progress under the construction of small warehouses**

Some delays were experienced under this activity mostly due to exogenous factors beyond the control of the project – like procedural delays, weather conditions, and local conditions.

Small warehouses of two sizes (120 m<sup>2</sup> and 90 m<sup>2</sup>) have been designed by the project. Based on these designs, the project plans to construct 12 warehouses with a maximum capacity of 25 tonnes each.

Over 30 contractors have expressed their interest in the construction work. In this connection, the extension of the project with no-additional-cost is being sought. The renewed estimated date for the completion and the handover of the small warehouses in the pilot areas is August 2006.

**Table 6: Proposed construction sites for the small-warehouses<sup>17</sup>**

	<i>Province</i>	<i>District</i>	<i>Village(s)</i>	<i>Beneficiary</i>	<i>Land Owner</i>	<i>No. of Members</i>
1	Takhar	Centre/Taloqan	Qazaq	Zahmat Kashan Cooperative	Cooperative	150 HH
		Bangi	Afaqi Kalan	Afaqi Kalan Shura	Community	270 HH
2	Kunduz	Imam Zahib	Khatoon Qala	Khatoon Qala Cooperative	Cooperative	130 HH
		Qalay-I-Zal	Qooq Bala and Payed	Two Communities	Community	140 HH
		Provincial Agriculture	Kunduz Centre	MAAHF, Kunduz	Government	
3	Baghlan	Puli Khumri	Wardagha-Gawhargan	Wardagha Gawhargan Shura	Community	300 HH
4	Samangan	Ruyi Du Ab	DoAb	DoAb Community	Community	931 HH
5	Balkh	Balkh	Hayaran	Hayaran Balkh	Cooperative	36 HH
		Dihdadi	Zanbokan	Kakacod Cooperative	Cooperative	107 HH
6	Faryab	Maymana	Center	Cooperative	Cooperative	208 HH
		Belcheragh	Center	Cooperative	Cooperative	673 HH
7	Heirat	Pashtun Zarghun	Qaistan	Cooperative	Cooperative	78 HH
<b>TOTAL</b>		<b>12 Warehouses</b>				

### **8.3.3. Beneficiary feedback**

The beneficiaries that have received the silos are happy about the storage facility they have had. They are also full of praises for the government, the donor and FAO for the support and training provided. Some of the beneficiaries provided with the 1,800 kg silos expressed that they would have preferred to have the smaller sized silo (500 and 900 kg) because: (i) there is not enough grain to fill the largest silo and (ii) loading is difficult without a ladder.

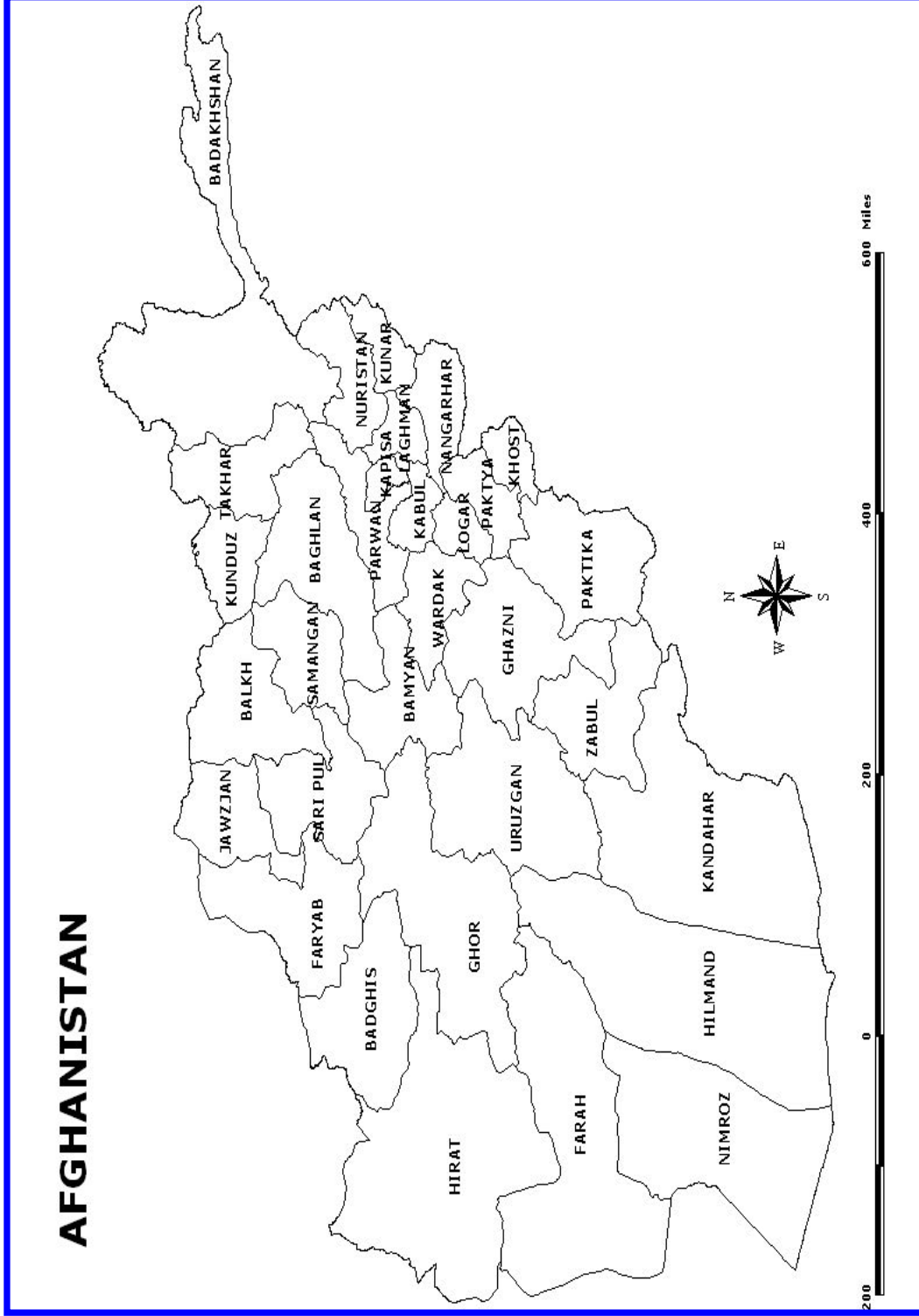
<sup>17</sup> Allocations mentioned in Table 6 are being carefully reassessed for their suitability. Their final assessment and approval confirmation will be made in collaboration with MAAHF.



Many non-beneficiary farmers who have seen the silos have been contacting MAAHF offices to request for allocation of the silos to them. Unfortunately, the project has limited fund for additional silo fabrication and distribution.

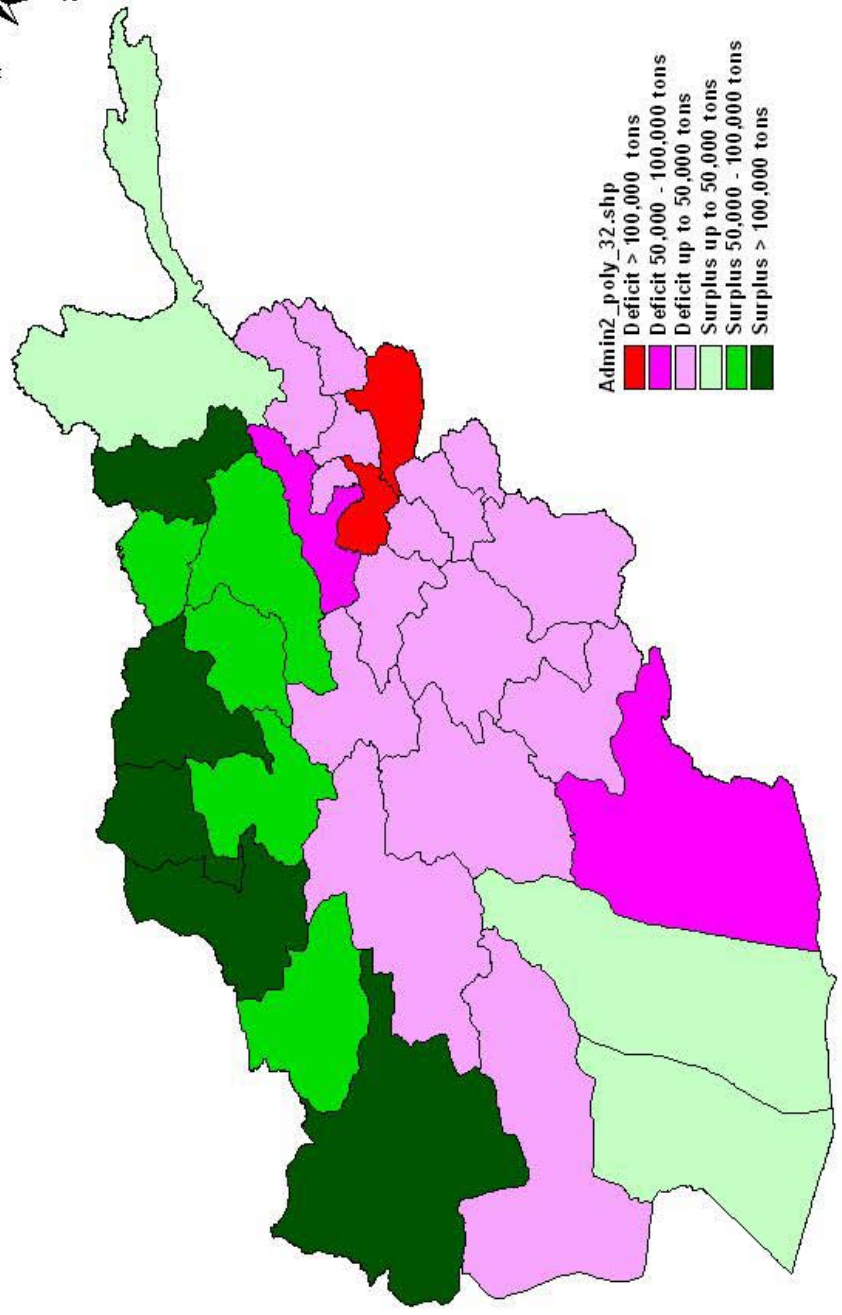
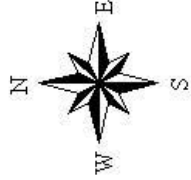
The local tinsmiths, who are indirect beneficiaries of the project, appreciate the effort of FAO to introduce the technology and believe that the silos would open a new avenue for a sustained growth in their regular incomes.

Afghanistan Map with Provincial Boundaries



(Source: AIMS)

# Map 2: Wheat Balance 2005



**Annex 1**  
**Assumptions involved in calculating the cereal utilization**

**Population ('000 number) [Source: Central Statistics Office]**

Population in 2003	22,191.0
Settled population	20,691.0
Nomads	1,500.0

Annual growth-rate is estimated at 1.92%.

The 2004 FAO/WFP Crop and Food Supply Mission used a population figure of 22.6 million (22.191x1.0192) in 2004.

Projected population in 2005 23,051.5 (22,191x1.0192x1.0192)

**Of which**

Settled population	21,493.5
Nomads	1,558.0

**Food use 2005**

Crop	Annual Requirement (kg/person/year)	Population (‘000 number)	Food Requirement (‘000 tons)
	(1)	(2)	(1)x(2)
Wheat	160	23,051.5	3,688
Milled rice	17	23,051.5	392
Maize	2	23,051.5	46
Barley	1	23,051.5	23
<b>Total</b>	<b>180</b>	<b>23,051.5</b>	<b>4,149</b>

**Seed and Feed use**

Crop	Forecast Area (‘000 ha)	Production (‘000 t)	Seed-rate (kg/ha)	Seed use (‘000 t)	Feed <sup>1</sup> (‘000 t)	Loss <sup>2</sup> (‘000 t)
	(1)	(2)	(3)	(1)x(3)	--	% of (2)
Irrigated wheat	1,089	2,728	175	191	--	409
Rainfed wheat	1,253	1,538	83	104	--	231
<b>All wheat</b>	<b>2,342</b>	<b>4,266</b>	<b>126</b>	<b>295</b>	<b>--</b>	<b>640</b>
Paddy	160	325	105	11	--	23
Maize	261	315	60	16	208	47
Barley	240	337	110	26	235	51
<b>Total</b>	<b>3,003</b>	<b>5,243</b>	<b>--</b>	<b>348</b>	<b>443</b>	<b>761</b>

<sup>1</sup> Feed use: two-third of production for maize and 70% in the case of barley

<sup>2</sup> Losses: 15% of production for wheat, maize and barley; 7% for milled rice

**Annex 2**  
**Area and Production of Wheat in 2005**  
**(July 2005 Estimates)**

REGION/ Province	Irrigated Wheat			Rainfed Wheat			Total Wheat		
	Area	Yield	Production	Area	Yield	Production	Area	Yield	Production
	('000 ha)	(t/ha)	('000 tons)	('000 ha)	(t/ha)	('000 tons)	('000 ha)	(t/ha)	('000 tons)
<b>NORTH</b>	<b>224</b>	<b>2.51</b>	<b>563</b>	<b>671</b>	<b>1.16</b>	<b>777</b>	<b>895</b>	<b>1.50</b>	<b>1,340</b>
Faryab	44	2.50	110	180	1.33	239	224	1.56	349
Juzjan	50	2.50	125	95	1.10	105	145	1.59	230
Sar-i-Pul	25	2.50	63	115	1.20	138	140	1.44	201
Balkh	89	2.50	223	154	1.05	162	243	1.58	385
Samangan	16	2.62	42	127	1.05	133	143	1.22	175
<b>NORTH-EAST</b>	<b>222</b>	<b>2.53</b>	<b>561</b>	<b>323</b>	<b>1.38</b>	<b>447</b>	<b>545</b>	<b>1.85</b>	<b>1,008</b>
Bughlan	54	2.50	135	74	1.50	111	128	1.92	246
Kunduz	93	2.50	233	14	1.40	20	107	2.36	253
Takhar	50	2.60	130	135	1.30	176	185	1.65	306
Badakhshan	25	2.50	63	100	1.40	140	125	1.62	203
<b>WEST</b>	<b>144</b>	<b>2.52</b>	<b>363</b>	<b>210</b>	<b>1.28</b>	<b>268</b>	<b>354</b>	<b>1.78</b>	<b>631</b>
Heart	97	2.62	254	110	1.23	135	207	1.88	389
Farah	24	2.40	58			0	24	2.42	58
Badghis	23	2.20	51	100	1.33	133	123	1.50	184
<b>WEST-CENTRAL</b>	<b>35</b>	<b>2.09</b>	<b>73</b>	<b>42</b>	<b>0.88</b>	<b>37</b>	<b>77</b>	<b>1.43</b>	<b>110</b>
Ghor	22	2.00	44	39	0.88	34	61	1.28	78
Bamyan	13	2.20	29	3	1.05	3	16	2.00	32
<b>CENTRAL</b>	<b>110</b>	<b>2.60</b>	<b>286</b>	<b>6</b>	<b>1.33</b>	<b>8</b>	<b>116</b>	<b>2.53</b>	<b>294</b>
Kabul	21	2.60	55	1	1.05	1	22	2.55	56
Parwan	29	2.60	75	5	1.33	7	34	2.41	82
Kapisa	10	2.66	27				10	2.70	27
Logar	22	2.40	53				22	2.41	53
Wardak	28	2.70	76				28	2.71	76
<b>SOUTH</b>	<b>102</b>	<b>2.60</b>	<b>265</b>	<b>1</b>	<b>1.00</b>	<b>1</b>	<b>103</b>	<b>2.58</b>	<b>266</b>
Paktya	18	2.60	47				18	2.61	47
Paktika	16	2.60	42				16	2.63	42
Khost	12	2.50	30				12	2.50	30
Ghazni	56	2.60	146	1	1.16	1	57	2.58	147
<b>EAST</b>	<b>74</b>	<b>2.09</b>	<b>155</b>				<b>74</b>	<b>2.09</b>	<b>155</b>
Nangarhar	51	2.00	102				51	2.00	102
Laghman	14	2.50	35				14	2.50	35
Kunarha	8	2.00	16				8	2.00	16
Nooristan	1	2.00	2				1	2.00	2
<b>SOUTH-WEST</b>	<b>178</b>	<b>2.60</b>	<b>462</b>				<b>178</b>	<b>2.60</b>	<b>462</b>
Kandahar	39	2.50	98				39	2.51	98
Helmand	80	2.66	213				80	2.66	213
Zabul	12	2.50	30				12	2.50	30
Nimroz	14	2.50	35				14	2.50	35
Uruzgan	33	2.60	86				33	2.61	86
<b>TOTAL</b>	<b>1,089</b>	<b>2.51</b>	<b>2,728</b>	<b>1,253</b>	<b>1.23</b>	<b>1,538</b>	<b>2,342</b>	<b>1.82</b>	<b>4,266</b>

Source: FAAHM/MAAHF

**Annex 3**  
**Wheat Balance in 2005 by Province**

<b>REGION/ Province</b>	<b>Settled population (Projected)</b>	<b>Irrigated wheat</b>	<b>Rainfed wheat</b>	<b>Wheat Production</b>	<b>Required for human consumption</b>	<b>Seed</b>	<b>Post harvest losses</b>	<b>Surplus or Deficit</b>
	<b>('000)</b>	<b>('000 ha.)</b>	<b>('000 ha.)</b>	<b>('000 tons)</b>	<b>('000 tons)</b>	<b>('000 tons)</b>	<b>('000 tons)</b>	<b>('000 tons)</b>
<b>NORTH</b>	<b>3,100.1</b>	<b>224</b>	<b>671</b>	<b>1,340</b>	<b>496.0</b>	<b>94.9</b>	<b>201.0</b>	<b>548.1</b>
Faryab	824.9	44	180	349	132.0	22.6	52.4	142.0
Juzjan	464.8	50	95	230	74.4	16.6	34.5	104.5
Sar-i-Pul	493.2	25	115	201	78.9	13.9	30.2	78.0
Balkh	986.4	89	154	385	157.8	28.4	57.8	141.0
Samangan	330.8	16	127	175	52.9	13.3	26.3	82.5
<b>NORTH-EAST</b>	<b>3,165.0</b>	<b>222</b>	<b>323</b>	<b>1,008</b>	<b>506.4</b>	<b>65.7</b>	<b>151.2</b>	<b>284.7</b>
Bughlan	754.8	54	74	246	120.8	15.6	36.9	72.7
Kunduz	865.5	93	14	253	138.5	17.4	38.0	59.1
Takhar	790.9	50	135	306	126.5	20.0	45.9	113.6
Badakhshan	753.8	25	100	203	120.6	12.7	30.5	39.2
<b>WEST</b>	<b>1,928.9</b>	<b>144</b>	<b>210</b>	<b>631</b>	<b>308.6</b>	<b>42.6</b>	<b>94.7</b>	<b>185.1</b>
Heart	1,254.8	97	110	389	200.8	26.1	58.4	103.7
Farah	356.7	24	0	58	57.1	4.2	8.7	-12.0
Badghis	317.4	23	100	184	50.8	12.3	27.6	93.3
<b>WEST-CENTRAL</b>	<b>918.4</b>	<b>35</b>	<b>42</b>	<b>110</b>	<b>146.9</b>	<b>9.6</b>	<b>16.5</b>	<b>-63.0</b>
Ghor	511.5	22	39	78	81.8	7.1	11.7	-22.6
Bamyan	406.9	13	3	32	65.1	2.5	4.8	-40.4
<b>CENTRAL</b>	<b>5,517.1</b>	<b>110</b>	<b>6</b>	<b>294</b>	<b>882.7</b>	<b>19.7</b>	<b>44.1</b>	<b>-652.5</b>
Kabul	3,578.6	21	1	56	572.6	3.8	8.4	-528.8
Parwan	765.8	29	5	82	122.5	5.5	12.3	-58.3
Kapisa	379.0	10	0	27	60.6	1.8	4.1	-39.5
Logar	327.6	22	0	53	52.4	3.9	8.0	-11.3
Wardak	466.1	28	0	76	74.6	4.9	11.4	-14.9
<b>SOUTH</b>	<b>2,054.6</b>	<b>102</b>	<b>1</b>	<b>266</b>	<b>328.7</b>	<b>17.9</b>	<b>39.9</b>	<b>-120.5</b>
Paktya	416.9	18	0	47	66.7	3.2	7.1	-30.0
Paktika	371.0	16	0	42	59.4	2.8	6.3	-26.5
Khost	316.4	12	0	30	50.6	2.1	4.5	-27.2
Ghazni	950.3	56	1	147	152.0	9.9	22.1	-37.0
<b>EAST</b>	<b>1,997.5</b>	<b>74</b>	<b>0</b>	<b>155</b>	<b>319.6</b>	<b>13.0</b>	<b>23.3</b>	<b>-200.9</b>
Nangarhar	1,148.6	51	0	102	183.8	8.9	15.3	-106.0
Laghman	392.8	14	0	35	62.8	2.5	5.3	-35.6
Kunarha	340.8	8	0	16	54.5	1.4	2.4	-42.3
Nooristan	115.3	1	0	2	18.4	0.2	0.3	-16.9
<b>SOUTH-WEST</b>	<b>2,811.9</b>	<b>178</b>	<b>0</b>	<b>462</b>	<b>449.9</b>	<b>31.2</b>	<b>69.3</b>	<b>-88.4</b>
Kandahar	949.3	39	0	98	151.9	6.8	14.7	-75.4
Helmand	785.7	80	0	213	125.7	14.0	32.0	41.3
Zabul	258.8	12	0	30	41.4	2.1	4.5	-18.0
Nimroz	157.4	14	0	35	25.2	2.5	5.3	2.0
Uruzgan	660.7	33	0	86	105.7	5.8	12.9	-38.4
<b>Total for settled</b>	<b>21,493.5</b>	<b>1,089</b>	<b>1,253</b>	<b>4,266</b>	<b>3,439.0</b>	<b>294.6</b>	<b>639.9</b>	<b>-107.5</b>
<b>Total for unsettled</b>	<b>1,558.0</b>	<b>--</b>	<b>--</b>	<b>--</b>	<b>249.3</b>	<b>--</b>	<b>--</b>	<b>-249.3</b>
<b>Overall</b>	<b>23,051.5</b>	<b>1,089</b>	<b>1,253</b>	<b>4,266</b>	<b>3,688.3</b>	<b>294.6</b>	<b>639.9</b>	<b>-356.8</b>

**Annex IV: National Consumer Price Index (CPI) September 2004 to August 2005  
(March 2004 = 100)**

Item	Weights	Sep 04	Oct 04	Nov 04	Dec 04	Jan 05	Feb 05	Mar 05	Apr 05	May 05	Jun 05	Jul 05	Aug 05
<b>OVERALL INDEX</b>	<b>100.0</b>	<b>104.9</b>	<b>106.4</b>	<b>106.8</b>	<b>108.4</b>	<b>109.3</b>	<b>110.4</b>	<b>111.6</b>	<b>111.9</b>	<b>113.1</b>	<b>113.9</b>	<b>114.3</b>	<b>114.8</b>
<b>Food Index</b>	<b>60.6</b>	<b>100.5</b>	<b>102.3</b>	<b>102.6</b>	<b>104.1</b>	<b>104.9</b>	<b>106.7</b>	<b>108.7</b>	<b>109.1</b>	<b>110.6</b>	<b>111.4</b>	<b>111.4</b>	<b>111.8</b>
Bread and cereals	25.2	101.0	102.8	103.8	105.9	107.7	111.4	114.9	113.8	116.6	118.6	118.9	119.5
Meat	5.1	99.9	100.8	101.3	102.7	105.0	106.8	108.8	106.6	107.0	107.3	107.3	107.6
Milk, cheese and eggs	5.4	102.1	103.3	102.3	104.0	104.6	104.5	103.4	105.2	104.7	105.1	106.4	107.0
Oils and fats	5.9	96.1	95.4	94.5	95.2	95.3	96.0	95.4	95.4	94.8	93.8	94.3	94.6
Fresh and dried fruits	5.6	104.1	110.0	107.4	107.5	105.1	101.5	103.0	104.8	106.2	106.9	108.3	107.6
Vegetables including tubers	6.6	100.2	103.4	105.5	108.4	107.7	110.7	112.6	117.3	119.9	119.2	114.9	115.4
Sugar and sweets	1.8	98.6	100.2	102.7	104.2	104.7	106.1	108.5	110.6	111.6	112.0	113.1	115.0
Spices	1.2	99.3	99.5	99.7	100.1	100.2	99.9	104.5	105.2	105.9	105.6	106.6	105.5
Non-alcoholic beverages	2.0	100.2	100.3	100.2	99.7	99.8	99.6	100.2	101.3	101.6	102.4	102.4	102.5
Cigarrates and tobacco	1.8	96.3	95.9	94.9	94.1	94.7	95.9	96.7	98.6	98.6	98.6	98.2	98.9
<b>Non-food Index</b>	<b>39.4</b>	<b>111.8</b>	<b>112.7</b>	<b>113.3</b>	<b>115.0</b>	<b>116.1</b>	<b>116.0</b>	<b>116.1</b>	<b>116.1</b>	<b>116.8</b>	<b>117.7</b>	<b>118.7</b>	<b>119.3</b>
<b>Exchange rate Index</b>		89.2	91.2	91.8	94.7	98.4	99.7	98.9	98.6	100.1	100.5	100.5	99.2

Source: Central Statistics Office

**Annex V: Kabul Consumer Price Index for October 2004 to September 2005  
(December 2002 = 100)**

Item	Weights	Oct 04	Nov 04	Dec 04	Jan 05	Feb 05	Mar 05	Apr 05	May 05	Jun 05	Jul 05	Aug 05	Sep 05
<b>OVERALL INDEX</b>	<b>100.0</b>	<b>115.5</b>	<b>116.7</b>	<b>119.1</b>	<b>119.4</b>	<b>120.8</b>	<b>123.0</b>	<b>123.7</b>	<b>124.9</b>	<b>125.9</b>	<b>126.2</b>	<b>126.9</b>	<b>129.3</b>
<b>Food</b>	<b>60.6</b>	<b>109.1</b>	<b>110.8</b>	<b>113.7</b>	<b>114.4</b>	<b>116.8</b>	<b>120.3</b>	<b>121.1</b>	<b>122.3</b>	<b>122.8</b>	<b>122.5</b>	<b>122.7</b>	<b>124.1</b>
Bread and cereals	25.2	113.4	115.9	121.7	123.8	129.5	134.8	134.6	136.4	137.2	136.3	136.4	139.4
Meat	5.1	129.9	131.9	134.2	135.2	135.6	137.7	143.5	145.6	146.4	145.3	145.6	145.4
Milk, cheese and eggs	5.4	115.5	116.9	118.9	120.2	121.0	120.4	120.4	119.5	119.2	119.0	120.3	121.7
Oils and fats	5.9	95.1	95.3	95.9	96.0	97.2	97.4	96.5	95.3	95.2	95.3	94.5	94.8
Fresh and dried fruits	5.6	110.9	113.1	112.0	107.1	104.8	109.0	110.6	112.6	113.9	114.4	114.2	114.7
Vegetables including tubers	6.6	86.5	86.6	87.3	87.2	87.8	93.2	95.4	97.4	96.0	96.3	96.4	96.3
Sugar and sweets	1.8	110.9	113.7	116.4	117.2	117.7	120.7	121.4	123.5	124.2	124.4	127.4	127.3
Spices	1.2	93.8	94.6	95.9	96.9	97.0	101.8	102.9	104.9	108.2	111.3	112.6	111.5
Non-alcoholic beverages	2.0	109.1	108.7	108.2	108.5	107.5	109.0	109.4	109.6	190.9	110.1	109.6	109.2
Cigarrates and tobacco	1.8	102.5	102.7	102.7	102.5	102.4	102.2	102.4	102.3	102.1	102.1	102.2	104.1
<b>Non-food Index</b>	<b>39.4</b>	<b>125.4</b>	<b>125.8</b>	<b>127.4</b>	<b>127.0</b>	<b>127.0</b>	<b>127.0</b>	<b>127.8</b>	<b>129.0</b>	<b>130.8</b>	<b>132.1</b>	<b>133.4</b>	<b>137.2</b>
<b>Exchange rate Index</b>		89.6	90.2	93.0	96.6	97.9	97.1	96.8	98.3	98.7	98.7	97.4	97.4

Source: Central Statistics Office



**Annex VI**  
**Retail market prices of selected agricultural commodities**

قیمت های امتعه زراعتی مارکیت های ولایات

(Source: FAAHM, MAAHF)

Wheat, local

گندم محلی در مارکیت های داخلی ( فی کیلو / به افغانی )

SN	Region	Province	Jan	Feb	Mar	Apr	May	Jun	Jul	Aug	Sep	Oct	Nov	Dec	ولایت	منطقه	نمبر
1	North	Faryab	12	12	10	10	11	11	11	12	13				فاریاب	شمال	1
2	North	Juzjan	8	9	10	10	10	10	10	15	11				جوزجان	شمال	2
3	North	Sar-i-Pul	6	7	8	9	9	9	9	10	11				سر پل	شمال	3
4	North	Balkh	10	11	10	9	9	9	9	9	9				بلخ	شمال	4
5	North	Samangan	9	9	8	7	7	6	6	9	10				سمنگان	شمال	5
6	North-East	Bughlan	11	10	10	7	7	7	8	10	10				بغلان	شمال شرق	6
7	North-East	Kunduz	9	9	10	10	10	9	8	15	11				کنندز	شمال شرق	7
8	North-East	Takhar	10	10	10	10	10	10	10	10	11				تخار	شمال شرق	8
9	North-East	Badakhshan	9	10	10						13				بدخشان	شمال شرق	9
10	West	Hirat	10	11	11	11	11	11	11	11	10				هرات	غرب	10
11	West	Farah	11	12	12	12	12	12	12	12	10				فراه	غرب	11
12	West	Badghis	8	8	9					12	11				بادغیس	غرب	12
13	West-Central	Ghor	7	9	10					12	8				غور	غرب مرکزی	13
14	West-Central	Bamyan	9	9	10	10	10	10	10	10	11				بامیان	غرب مرکزی	14
15	Central	Kabul	10	11	11	11	11	12	12	12	11				کابل	مرکزی	15
16	Central	Parwan	11	11	12	10	11	9	9	12	12				پروان	مرکزی	16
17	Central	Kapisa	13	13	13	13	13	13	14	12	12				کاپیسا	مرکزی	17
18	Central	Logar	11	11	11	11	11	11	12	12	12				لوگر	مرکزی	18
19	Central	Wardak	10	10	11	11	12	13	13	10	12				وردک	مرکزی	19
20	South	Paktya	14	14	14	14	14	14	15	12	11				پکتیا	جنوب	20
21	South	Paktika	14	15	15										پکتیکا	جنوب	21
22	South	Khost	11	11	11	12	12	10	10	9	10				خوست	جنوب	22
23	South	Ghazni	12	12	13	16	16	11	11	10	14				غزنی	جنوب	23
24	East	Nangarhar	10	11	12	12	11	7	10	9	12				ننگرهار	شرق	24
25	East	Laghman	15	14	13	12	12	11	11	11	11				لغمان	شرق	25
26	East	Kunarha	11	11	12	11	11	10	10	10	10				کنرها	شرق	26
27	East	Nooristan	20	20	20	18	18	15	15						نورستان	شرق	27
28	South-West	Kandahar	11	12	13	13	14	12	12	12	11				کندهار	جنوب غرب	28
29	South-West	Helmand	10	10	10	8	8	6	7	11	10				هلمند	جنوب غرب	29
30	South-West	Zabul		20	20	15	15	14	15	13	11				زابل	جنوب غرب	30
31	South-West	Nimroz	15	14	13	12	12	9	9	9	10				نیمروز	جنوب غرب	31
32	South-West	Uruzgan	21	21	20										اروزگان	جنوب غرب	32

**Annex VI**  
**Retail market prices of selected agricultural commodities**  
 قیمت های امتعه زراعتی مارکیت های ولایات  
 (Source: FAAHM, MAAHF)

**Wheat Imported, best quality (Afs/Kg)**

گندم وارداتی باکیفیت عالی

SN	Region	Province	Jan	Feb	Mar	Apr	May	Jun	Jul	Aug	Sep	Oct	Nov	Dec	ولایت	منطقه	نمبر
1	North	Faryab	14	14	14	13	12	11	11	13	12				فاریاب	شمال	1
2	North	Juzjan								10	10				جوزجان	شمال	2
3	North	Sar-i-Pul						11	11	10	10				سرپل	شمال	3
4	North	Balkh	9	9	9	9	9	9	9	10	8				بلخ	شمال	4
5	North	Samangan						8	8	10					سمنگان	شمال	5
6	North-	Bughian	12	12	13	10	9	8	8	9	10				بغلان	شمال شرق	6
7	North-	Kunduz						10	9	10	10				کنندز	شمال شرق	7
8	North-	Takhar									11				تخار	شمال شرق	8
9	North-	Badakhshan	10	11	11										بدخشان	شمال شرق	9
10	West	Hirat	9	10	10	10	10	10	10	10					هرات	غرب	10
11	West	Farah													فره	غرب	11
12	West	Badghis								15	11				بادغیس	غرب	12
13	West-	Ghor													غور	غرب مرکزی	13
14	West-	Bamyan	12	12	13	12	11	11	11	14	12				بامیان	غرب مرکزی	14
15	Central	Kabul	13	13	14	12	11	11	11	15	14				کابل	مرکزی	15
16	Central	Parwan	13	13	13	12	11	10	10	10	12				پروان	مرکزی	16
17	Central	Kapisa	11	11	11					12	12				کاپیسا	مرکزی	17
18	Central	Logar	10	10	10	10	11	11	11	12	13				لوگر	مرکزی	18
19	Central	Wardak	10	10	11	11	11	11	11	12	11				وردک	مرکزی	19
20	South	Paktya								14	13				پکتیا	جنوب	20
21	South	Paktika	13	14	14										پکتیکا	جنوب	21
22	South	Khost								10	10				خوست	جنوب	22
23	South	Ghazni	15	15	15	13	13	9	9	9					غزنی	جنوب	23
24	East	Nangarhar	12	12	12	11	10	10	11	10					ننگرهار	شرق	24
25	East	Laghman	15	14	13						11				لغمان	شرق	25
26	East	Kunarha	11	11	12	10	10	9	9	9	9				کنرها	شرق	26
27	East	Nooristan	11	11	12	10	10	11	11						نورستان	شرق	27
28	South-	Kandahar	11	12	13										کندهار	جنوب غرب	28
29	South-	Helmand						9	9		10				هلمند	جنوب غرب	29
30	South-	Zabul				14	14	20	21						زابل	جنوب غرب	30
31	South-	Nimroz	16	15	15	12	12	9	9						نیمروز	جنوب غرب	31
32	South-	Uruzgan													اروزگان	جنوب غرب	32

**Annex VI**  
**Retail market prices of selected agricultural commodities**  
 قیمت های امتعه زراعتی مارکیت های ولایات  
 (Source: FAAHM, MAAHF)

**Wheat Flour, best quality (Afs/Kg)**

کندم وارداتی با کیفیت عالی

SN	Region	Province	Jan	Feb	Mar	Apr	May	Jun	Jul	Aug	Sep	Oct	Nov	Dec	ولایت	منطقه	نمبر
1	North	Faryab	13	13	13	13	13	15	15	15	16				فاریاب	شمال	1
2	North	Juzjan	10	11	11	12	12	14	14	14	14				جوزجان	شمال	2
3	North	Sar-i-Pul	9	10	11	11	11	15	15	11	14				سرپل	شمال	3
4	North	Balkh	15	14	15	14	14	15	15	15	10				بلخ	شمال	4
5	North	Samangan	12	12	12	13	13	15	15	12	14				سمنگان	شمال	5
6	North-	Bughian	12	12	13	11	11	14	14	15	19				بغلان	شمال شرق	6
7	North-	Kunduz	13	14	14	14	14	14	14	15	19				کنندز	شمال شرق	7
8	North-	Takhar	13	13	13	12	12	11	11		11				تخار	شمال شرق	8
9	North-	Badakhshan	19	14	15				15		11				بدخشان	شمال شرق	9
10	West	Hirat	13	14	15	15	15	15	15	14	13				هرات	غرب	10
11	West	Farah	15	16	16					16	11				فراه	غرب	11
12	West	Badghis	10	10	11					16	17				بادغیس	غرب	12
13	West-	Ghor	9	10	11					17	12				غور	غرب مرکزی	13
14	West-	Bamyan	15	15	15	15	15	15	15	15	16				بامیان	غرب مرکزی	14
15	Central	Kabul	15	15	16	15	16	17	17	15	15				کابل	مرکزی	15
16	Central	Parwan	15	15	15	16	16	15	15	14	15				پروان	مرکزی	16
17	Central	Kapisa	14	15	16	16	15	14	14	14	14				کاپیسا	مرکزی	17
18	Central	Logar	15	15	15	15	15	14	14	14	14				لوگر	مرکزی	18
19	Central	Wardak	15	15	15	15	15	14	15	14	16				وردک	مرکزی	19
20	South	Paktya	14	14	14	14	14	14	15	17	14				پکتیا	جنوب	20
21	South	Paktika	15	15	16										پکتیکا	جنوب	21
22	South	Khost	13	13	13	20	20	14	14	14	14				خوست	جنوب	22
23	South	Ghazni	16	16	17	15	15	14	14	15	15				غزنی	جنوب	23
24	East	Nangarhar	14	13	14	16	14	13	13	14	18				ننگرهار	شرق	24
25	East	Laghman	15	14	14					14	16				لغمان	شرق	25
26	East	Kunarha	18	18	19	15	15	12	12	12	14				کنرها	شرق	26
27	East	Nooristan	14	14	14	13	13	13	13	12	14				نورستان	شرق	27
28	South-	Kandahar	12	13	14	15	15	13	13	15	12				کندهار	جنوب غرب	28
29	South-	Helmand	17	17	17	14	14	9	10	15	14				هلمند	جنوب غرب	29
30	South-	Zabul	60	25	25	15	15	13	14	14	14				زابل	جنوب غرب	30
31	South-	Nimroz	17	16	15	15	16	16	16	15	15				نیمروز	جنوب غرب	31
32	South-	Uruzgan	28	28	25										اروزگان	جنوب غرب	32

**Annex VI**  
**Retail market prices of selected agricultural commodities**  
 قیمت های امتعه زراعتی مارکیت های ولایات  
 (Source: FAAHM, MAAHF)

**Beef (Afs/Kg)**  
 گوشت گا و یک کیلو گرام به افغانی

SN	Region	Province	Jan	Feb	Mar	Apr	May	Jun	Jul	Aug	Sep	Oct	Nov	Dec	ولایت	منطقه	نمبر
1	North	Faryab	120	140	130	130	130	120	120	120	120				فاریاب	شمال	1
2	North	Juzjan	110	120	140	130	130	130	130	130	140				جوزجان	شمال	2
3	North	Sar-i-Pul	120	120	140			120	120	120	120				سر پل	شمال	3
4	North	Balkh	140	145	150	150	150	150	150	140	130				بلخ	شمال	4
5	North	Samangan	120	140	150					130	120				سمنگان	شمال	5
6	North-	Bughlan	90	100	100	120	150			150	120				بغلان	شمال شرق	6
7	North-	Kunduz	100	120	120	120	120	120	120	115	140				کنندز	شمال شرق	7
8	North-	Takhar	100	100	100	110	110	120	120	115	110				تخار	شمال شرق	8
9	North-	Badakhshan	100	120	140					150					بدخشان	شمال شرق	9
10	West	Hirat	120	130	140	130	130	130	130	120	120				هرات	غرب	10
11	West	Farah	120	130	130					120	120				فراه	غرب	11
12	West	Badghis	90	100	140					100	100				بادغیس	غرب	12
13	West-	Ghor	100	110	120					120	120				غور	غرب مرکزی	13
14	West-	Bamyan	100	100	100	110	110	120	120	120	120				بامیان	غرب مرکزی	14
15	Central	Kabul	120	130	130	130	130	140	140	120	120				کابل	مرکزی	15
16	Central	Parwan	110	110	110	120	120	120	120	120					پروان	مرکزی	16
17	Central	Kapisa	120	120	120					120	120				کاپیسا	مرکزی	17
18	Central	Logar	120	120	120	120	120	130	130	120	120				لوگر	مرکزی	18
19	Central	Wardak	110	110	110	120	120	125	125	130	130				وردک	مرکزی	19
20	South	Paktya	110	120	120					120	120				پکتیا	جنوب	20
21	South	Paktika	110	110	120										پکتیکا	جنوب	21
22	South	Khost	95	95	95	100	100	110	110	100	100				خوست	جنوب	22
23	South	Ghazni	118	119	120	120	120	115	115	130	100				غزنی	جنوب	23
24	East	Nangarhar	110	110	110	100	110	120	120	120	110				ننگرهار	شرق	24
25	East	Laghman	120	120	120						110				لغمان	شرق	25
26	East	Kunarha	100	100	100	100	100	100	100	100	110				کنرها	شرق	26
27	East	Nooristan	180	180	180	150	150	120	120						نورستان	شرق	27
28	South-	Kandahar	120	120	120	130	130			115	140				کندهار	جنوب غرب	28
29	South-	Helmand	120	120	120					115	118				هلمند	جنوب غرب	29
30	South-	Zabul	125	125	125	100	100			130	110				زابل	جنوب غرب	30
31	South-	Nimroz	140	140	130	130	130	130	130						نیمروز	جنوب غرب	31
32	South-	Uruzgan	120	120	120										اروزگان	جنوب غرب	32

**Annex VI**  
**Retail market prices of selected agricultural commodities**  
 قیمت های امتعه زراعتی مارکیت های ولایات  
 (Source: FAAHM, MAAHF)

**Mutton / Lamb (Afs/Kg)**  
 گوشت گوسفند کیلو گرام / افغانی

SN	Region	Province	Jan	Feb	Mar	Apr	May	Jun	Jul	Aug	Sep	Oct	Nov	Dec	ولایت	منطقه	نمبر
1	North	Faryab	150	160	180	160	160	150	150	150	150				فاریاب	شمال	1
2	North	Juzjan	120	130	160	160	160	160	160	160	160				جوزجان	شمال	2
3	North	Sar-i-Pul	150	160	180			150	150	150	150				سر پل	شمال	3
4	North	Balkh	170	175	180	160	160	160	170	170	160				بلخ	شمال	4
5	North	Samangan	160	170	180				160	140					سمنگان	شمال	5
6	North-East	Bughlan	140	150	150	180	180		180	150					بغلان	شمال شرق	6
7	North-East	Kunduz	140	150	160	160	160		225	160					کنندز	شمال شرق	7
8	North-East	Takhar	140	140	160	150	150	140	140		150				تخار	شمال شرق	8
9	North-East	Badakhshan	120	150	170				180						بدخشان	شمال شرق	9
10	West	Hirat	190	200	200	180	180	170	170	180	160				هرات	غرب	10
11	West	Farah	180	190	200				170	165					فراه	غرب	11
12	West	Badghis	160	170	200				170	130					بادغیس	غرب	12
13	West-	Ghor	120	130	140				140	140					غور	غرب مرکزی	13
14	West-	Bamyan	170	170	170	160	160	160	160	160	160				بامیان	غرب مرکزی	14
15	Central	Kabul	160	160	160	175	175	180	180	180	180				کابل	مرکزی	15
16	Central	Parwan	200	180	180	180	180	160	160	160					پروان	مرکزی	16
17	Central	Kapisa	160	150	140				180	160					کاپیسا	مرکزی	17
18	Central	Logar	170	170	170	160	160	150	150	170	160				لوگر	مرکزی	18
19	Central	Wardak	180	200	200	180	180	200	200	185	160				وردک	مرکزی	19
20	South	Paktya	170	165	165				180	180					پکتیا	جنوب	20
21	South	Paktika	160	150	150										پکتیکا	جنوب	21
22	South	Khost	135	135	130	140	140	160	160	150	140				خوست	جنوب	22
23	South	Ghazni	150	160	160	200	200	155	155	170	130				غزنی	جنوب	23
24	East	Nangarhar	140	140	140	150	150	150	180	180	140				ننگرهار	شرق	24
25	East	Laghman	150	150	150					150					لغمان	شرق	25
26	East	Kunarha	150	150	150	150	150	160	160	140	170				کنرھا	شرق	26
27	East	Nooristan	200	200	200	170	170	150	150						نورستان	شرق	27
28	South-	Kandahar	177	177	185	200	200		215	188					کندهار	جنوب غرب	28
29	South-	Helmand	180	180	180	165	165		150	170					هلمند	جنوب غرب	29
30	South-	Zabul	175	175	175	220	220		170	180					زابل	جنوب غرب	30
31	South-	Nimroz	195	190	185	170	170	170	170						نیمروز	جنوب غرب	31
32	South-	Uruzgan	200	200	222										اروزگان	جنوب غرب	32

**Annex VI**  
**Retail market prices of selected agricultural commodities**  
 قیمت های امتعه زراعتی مارکیت های ولایات  
 (Source: FAAHM, MAAHF)

**Chicken (Afs/Kg)**  
 گوشت مرغ کیلو گرام / افغانی

SN	Region	Province	Jan	Feb	Mar	Apr	May	Jun	Jul	Aug	Sep	Oct	Nov	Dec	ولایت	منطقه	نمبر
1	North	Faryab	70	70	90	80	80	75	75	Aug	75				فاریاب	شمال	1
2	North	Juzjan	80	80	80	80	80	80	80	80	80				جوزجان	شمال	2
3	North	Sar-i-Pul	70	75	80			85	85	80	75				سر پل	شمال	3
4	North	Balkh	65	70	80	85	80	80	85	90	90				بلخ	شمال	4
5	North	Samangan	75	80	80					85	80				سمنگان	شمال	5
6	North-East	Bughlan	60	70	90	90	90			85	80				بغلان	شمال شرق	6
7	North-East	Kunduz	70	80	90	90	90				90				کنندز	شمال شرق	7
8	North-East	Takhar	70	70	90	90	90	90	90		75				تخار	شمال شرق	8
9	North-East	Badakhshan	80	90	90										بدخشان	شمال شرق	9
10	West	Hirat	70	70	80						75				هرات	غرب	10
11	West	Farah	80	90	100						80				فراه	غرب	11
12	West	Badghis	65	70	70						75				بادغیس	غرب	12
13	West-	Ghor	70	70	80										غور	غرب مرکزی	13
14	West-	Bamyan	130	130	130	120	120	110	110	90	110				بامیان	غرب مرکزی	14
15	Central	Kabul	70	70	85	85	85	80	90	75	90				کابل	مرکزی	15
16	Central	Parwan	70	65	60	75	75	75	75	75					پروان	مرکزی	16
17	Central	Kapisa	80	75	75						60				کاپیسا	مرکزی	17
18	Central	Logar	80	80	90	90	90	85	85	90	90				لوگر	مرکزی	18
19	Central	Wardak	70	70	70	75	75	80	80	80	75				وردک	مرکزی	19
20	South	Paktya	90	90	90						75				پکتیا	جنوب	20
21	South	Paktika	90	90	90					85					پکتیکا	جنوب	21
22	South	Khost	85	85	85	85	85	85	85	85	100				خوست	جنوب	22
23	South	Ghazni	80	80	80	95	95	90	90	85	90				غزنی	جنوب	23
24	East	Nangarhar	85	85	85	85	85	85	80	85	100				ننگرهار	شرق	24
25	East	Laghman	70	70	70						90				لغمان	شرق	25
26	East	Kunarha	80	80	80	100	100	120	120	80	80				کنرھا	شرق	26
27	East	Nooristan	100	100	100	90	90	90	90						نورستان	شرق	27
28	South-West	Kandahar	70	70	70	70	70			85	75				کندهار	جنوب غرب	28
29	South-West	Helmand	70	70	70	70	70			85	75				هلمند	جنوب غرب	29
30	South-West	Zabul	70	70	70	85	85			85	80				زابل	جنوب غرب	30
31	South-West	Nimroz	75	70	70	70	70	70	70						نیمروز	جنوب غرب	31
32	South-West	Uruzgan	85	85	85										اروزگان	جنوب غرب	32

**Annex VI**  
**Retail market prices of selected agricultural commodities**  
 قیمت های امتعه زراعتی مارکیت های ولایات  
 (Source: FAAHM, MAAHF)

**Rice Local (Afs/Kg)**  
 برنج محلی کیلو گرام /افغانی

SN	Region	Province	Jan	Feb	Mar	Apr	May	Jun	Jul	Aug	Sep	Oct	Nov	Dec	ولایت	منطقه	نمبر
1	North	Faryab	25	25	25	25	25	26	26	32	32				فاریاب	شمال	1
2	North	Juzjan	17	20	23	25	25	28	28	28	31				جوزجان	شمال	2
3	North	Sar-i-Pul	23	23	23			23	23	31	26				سر پل	شمال	3
4	North	Balkh	30	30	35	25	25	25	23	22	31				بلخ	شمال	4
5	North	Samangan	20	20	20					24	28				سمنگان	شمال	5
6	North-East	Bughlan	18	20	21	20	20			22	20				بغلان	شمال شرق	6
7	North-East	Kunduz	20	22	22	19	19				31				کنندز	شمال شرق	7
8	North-East	Takhar	18	20	20	20	20	20	20		32				تخار	شمال شرق	8
9	North-East	Badakhshan	20	20	20										بدخشان	شمال شرق	9
10	West	Hirat	24	25	25	25	25	20	19	28					هرات	غرب	10
11	West	Farah													فراه	غرب	11
12	West	Badghis													بادغیس	غرب	12
13	West-Central	Ghor													غور	غرب مرکزی	13
14	West-Central	Bamyan	25	25	25	26	26	26	26	17	30				بامیان	غرب مرکزی	14
15	Central	Kabul	21	23	34					20	24				کابل	مرکزی	15
16	Central	Parwan	17	17	17	24	25	26	26						پروان	مرکزی	16
17	Central	Kapisa	16	16	16					17	15				کاپیسا	مرکزی	17
18	Central	Logar						25	25	31	32				لوگر	مرکزی	18
19	Central	Wardak								28	32				وردک	مرکزی	19
20	South	Paktya	17	17	17						24				پکتیا	جنوب	20
21	South	Paktika													پکتیکا	جنوب	21
22	South	Khost				20	20	20	20	20	20				خوست	جنوب	22
23	South	Ghazni	25	25	25	23	23				20				غزنی	جنوب	23
24	East	Nangarhar	14	14	14	16	14	14	14	18	23				ننگرهار	شرق	24
25	East	Laghman	23	24	23										لغمان	شرق	25
26	East	Kunarha	25	25	25	30	30	30	30	30	30				کنرھا	شرق	26
27	East	Nooristan	16	16	16	15	15	18	18	20	20				نورستان	شرق	27
28	South-West	Kandahar	25	25	25	25	25	25	25	25	25				کندهار	جنوب غرب	28
29	South-West	Helmand	25	25	25	25	25	25	25	25	25				هلمند	جنوب غرب	29
30	South-West	Zabul	28	28	28	28	28	28	28	28	28				زابل	جنوب غرب	30
31	South-West	Nimroz													نیمروز	جنوب غرب	31
32	South-West	Uruzgan													اروزگان	جنوب غرب	32

**Annex VI**  
**Retail market prices of selected agricultural commodities**  
 قیمت های امتعه زراعتی مارکیت های ولایات  
 (Source: FAAHM, MAAHF)

**Rice Imported (Afs/Kg)**  
 برنج وارداتی کیلو گرام / افغانی

SN	Region	Province	Jan	Feb	Mar	Apr	May	Jun	Jul	Aug	Sep	Oct	Nov	Dec	ولایت	منطقه	نمبر
1	North	Faryab	32	32	32	32	32	31	31	32	33				فاریاب	شمال	1
2	North	Juzjan	28	32	35	35	35	35	35	35	33				جوزجان	شمال	2
3	North	Sar-i-Pul	32	32	32			33	33		33				سر پل	شمال	3
4	North	Balkh	35	35	36	33	33	33	33	33	33				بلخ	شمال	4
5	North	Samangan	32	35	35					31	32				سمنگان	شمال	5
6	North-East	Bughlan	32	32	32	35	35			35	23				بغلان	شمال شرق	6
7	North-East	Kunduz	32	32	32	30	30			30	33				کنندز	شمال شرق	7
8	North-East	Takhar										35			تخار	شمال شرق	8
9	North-East	Badakhshan	33	33	33										بدخشان	شمال شرق	9
10	West	Hirat	30	30	30					34	34				هرات	غرب	10
11	West	Farah	30	30	30					35					فراه	غرب	11
12	West	Badghis	35	35	36					35	35				بادغیس	غرب	12
13	West-Central	Ghor	35	35	36					35	35				غور	غرب مرکزی	13
14	West-Central	Bamyan	35	35	35	37	37	40	40	35	37				بامیان	غرب مرکزی	14
15	Central	Kabul	34	34	34	28	35	33	33	35	31				کابل	مرکزی	15
16	Central	Parwan	33	33	33	32	32	31	31	30					پروان	مرکزی	16
17	Central	Kapisa	31	31	31					33	34				کاپیسا	مرکزی	17
18	Central	Logar	31	31	31	35	35	35	35	30	32				لوگر	مرکزی	18
19	Central	Wardak	30	30	30	31	31	32	32	35	35				وردک	مرکزی	19
20	South	Paktya	29	29	31					28	29				پکتیا	جنوب	20
21	South	Paktika	35	35	35										پکتیکا	جنوب	21
22	South	Khost	32	32	33	35	35	35	35	30	30				خوست	جنوب	22
23	South	Ghazni	30	30	41	31	31			34					غزنی	جنوب	23
24	East	Nangarhar	33	33	33	33	31	31	31	30	27				ننگرهار	شرق	24
25	East	Laghman	32	32	32										لغمان	شرق	25
26	East	Kunarha	36	36	36	35	35	35	35	35	35				کنرھا	شرق	26
27	East	Nooristan	40	40	40	35	35	32	32						نورستان	شرق	27
28	South-West	Kandahar	40	40	40	35	35			30	36				کندهار	جنوب غرب	28
29	South-West	Helmand	42	42	42	30	30			36	31				هلمند	جنوب غرب	29
30	South-West	Zabul	32	32	32	31	31			32	33				زابل	جنوب غرب	30
31	South-West	Nimroz	32	31	31	36	36	36	36						نیمروز	جنوب غرب	31
32	South-West	Uruzgan	43	41	41										اروزگان	جنوب غرب	32



**Annex VI**  
**Retail market prices of selected agricultural commodities**  
 قیمت های امتعه زراعتی مارکیت های ولایات  
 (Source: FAAHM, MAAHF)

**Best Quality Wheat Seed (Afs/Kg)**  
 تخم گندم با کیفیت عالی کیلو گرام / افغانی

SN	Region	Province	Jan	Feb	Mar	Apr	May	Jun	Jul	Aug	Sep	Oct	Nov	Dec	ولایت	منطقه	نمبر
1	North	Faryab	14	14	14	14	14	14	14						فاریاب	شمال	1
2	North	Juzjan	9	9	12	11	11	11	11	11	12				جوزجان	شمال	2
3	North	Sar-i-Pul	11	11	12	11	11	11	11		13				سر پل	شمال	3
4	North	Balkh	11	11	11	11	11	11	11	11	11				بلخ	شمال	4
5	North	Samangan	10	10	10						11				سمنگان	شمال	5
6	North-East	Bughlan	11	10	10						10				بغلان	شمال شرق	6
7	North-East	Kunduz	13	13	13						12				کنندز	شمال شرق	7
8	North-East	Takhar	13	13	13	13	13	13	13						تخار	شمال شرق	8
9	North-East	Badakhshan	13	10	10										بدخشان	شمال شرق	9
10	West	Hirat	17	17	17						13				هرات	غرب	10
11	West	Farah	16	16	16						13				فراه	غرب	11
12	West	Badghis	11	11	11						13				بادغیس	غرب	12
13	West-Central	Ghor	10	10	10						13				غور	غرب مرکزی	13
14	West-Central	Bamyan	13	13	13	14	14	14	14	14	14				بامیان	غرب مرکزی	14
15	Central	Kabul	13	13	14	29	25	22	22		15				کابل	مرکزی	15
16	Central	Parwan	20	20	22	15	15	15	15						پروان	مرکزی	16
17	Central	Kapisa	16	16	16										کاپیسا	مرکزی	17
18	Central	Logar	34	33	33	15	15	15	15	15					لوگر	مرکزی	18
19	Central	Wardak	20	20	22	20	20	20	20		15				وردک	مرکزی	19
20	South	Paktya	17	16	15										پکتیا	جنوب	20
21	South	Paktika	16	16											پکتیکا	جنوب	21
22	South	Khost	13	13	13	15	25	18	18		13				خوست	جنوب	22
23	South	Ghazni	20	20	20	17	17				13				غزنی	جنوب	23
24	East	Nangarhar	14	10	10	16	16	15	15	15					ننگرهار	شرق	24
25	East	Laghman	19	19	19										لغمان	شرق	25
26	East	Kunarha	12	11	11	11	11	10	10						کنرھا	شرق	26
27	East	Nooristan													نورستان	شرق	27
28	South-West	Kandahar	17	17	17	15	15				13				کندهار	جنوب غرب	28
29	South-West	Helmand	12	11	11	14	14				12				هلمند	جنوب غرب	29
30	South-West	Zabul				20	20				21				زابل	جنوب غرب	30
31	South-West	Nimroz	18	18	18	17	17	17	17						نیمروز	جنوب غرب	31
32	South-West	Uruzgan	30	30	25										اروزگان	جنوب غرب	32

**Annex VI**  
**Retail market prices of selected agricultural commodities**  
 قیمت های امتعه زراعتی مارکیت های ولایات  
 (Source: FAAHM, MAAHF)

**Improved variety wheat seed (Afs/Kg)**

تخم اصلاح شده گندم افغانی / کیلو گرام

SN	Region	Province	Jan	Feb	Mar	Apr	May	Jun	Jul	Aug	Sep	Oct	Nov	Dec	ولایت	منطقه	نمبر
1	North	Faryab	8	8	8										فاریاب	شمال	1
2	North	Juzjan	8	9	10						11				جوزجان	شمال	2
3	North	Sar-i-Pul	10	11	11			10	10		11				سر پل	شمال	3
4	North	Balkh	8	8	8	10	10	10	10	10	11				بلخ	شمال	4
5	North	Samangan	9	10	10						11				سمنگان	شمال	5
6	North-East	Bughlan	10	10	10						10				بغلان	شمال شرق	6
7	North-East	Kunduz	11	11	11						11				کنندز	شمال شرق	7
8	North-East	Takhar	11	11	11	12	12	12	12						تخار	شمال شرق	8
9	North-East	Badakhshan	12	10	10										بدخشان	شمال شرق	9
10	West	Hirat	14	15	15						12				هرات	غرب	10
11	West	Farah	14	15	15						11				فراه	غرب	11
12	West	Badghis	9	9	9						11				بادغیس	غرب	12
13	West-Central	Ghor	9	9	10										غور	غرب مرکزی	13
14	West-Central	Bamyan	10	10	10						13				بامیان	غرب مرکزی	14
15	Central	Kabul	11	11	11	25	22				13				کابل	مرکزی	15
16	Central	Parwan													پروان	مرکزی	16
17	Central	Kapisa	14	14	14						13				کاپیسا	مرکزی	17
18	Central	Logar	20	20	20	15	15	15	15	15					لوگر	مرکزی	18
19	Central	Wardak									14				وردک	مرکزی	19
20	South	Paktya	16	16	15										پکتیا	جنوب	20
21	South	Paktika	15	15	15										پکتیکا	جنوب	21
22	South	Khost	13	13	13	15	20	15	15		23				خوست	جنوب	22
23	South	Ghazni	18	18	18	13	13				31				غزنی	جنوب	23
24	East	Nangarhar	14	10	10	14	14	14	14	14	15				ننگرهار	شرق	24
25	East	Laghman													لغمان	شرق	25
26	East	Kunarha	11	11	11	11	11	10	10						کنرھا	شرق	26
27	East	Nooristan	16	16	16	17	17	17	17						نورستان	شرق	27
28	South-West	Kandahar	12	13	13	14	14				12				کندهار	جنوب غرب	28
29	South-West	Helmand	11	11	10	10	10				10				هلمند	جنوب غرب	29
30	South-West	Zabul	25	25	25	14	14				21				زابل	جنوب غرب	30
31	South-West	Nimroz	17	17	16	16	17	17	17						نیمروز	جنوب غرب	31
32	South-West	Uruzgan	28	28	22										اروزگان	جنوب غرب	32

**Annex VI**  
**Retail market prices of selected agricultural commodities**  
 قیمت های امتعه زراعتی مارکیت های ولایات  
 (Source: FAAHM, MAAHF)

**Agriculture Labour (Afs/Day)**

کارگر زراعتی افغانی / کیلو گرام

SN	Region	Province	Jan	Feb	Mar	Apr	May	Jun	Jul	Aug	Sep	Oct	Nov	Dec	ولایت	منطقه	نمبر
1	North	Faryab	150	150	180	200	200	240	240		250				فاریاب	شمال	1
2	North	Juzjan	140	140	200	150	150	150	150	150	150				جوزجان	شمال	2
3	North	Sar-i-Pul	120	150	200			200	250		180				سر پل	شمال	3
4	North	Balkh	180	200	230	130	150	150	200	200	200				بلخ	شمال	4
5	North	Samangan	120	120	150					200	200				سمنگان	شمال	5
6	North-East	Bughlan	130	120	150	150	180				180				بغلان	شمال شرق	6
7	North-East	Kunduz	130	130	150	130	130				180				کنندز	شمال شرق	7
8	North-East	Takhar	100	100	120	130	130	130	130		200				تخار	شمال شرق	8
9	North-East	Badakhshan	120	120	120										بدخشان	شمال شرق	9
10	West	Hirat	150	140	150						180				هرات	غرب	10
11	West	Farah	200	200	200						200				فراه	غرب	11
12	West	Badghis	100	100	110						150				بادغیس	غرب	12
13	West-Central	Ghor	100	100	150						200				غور	غرب مرکزی	13
14	West-Central	Bamyan	200	200	200	150	150	150	150		190				بامیان	غرب مرکزی	14
15	Central	Kabul	180	180	200	200	200	180	180	200	170				کابل	مرکزی	15
16	Central	Parwan	200	200	200	150	200	175	175						پروان	مرکزی	16
17	Central	Kapisa	200	200	250						200				کاپیسا	مرکزی	17
18	Central	Logar	200	200	200	180	180	180	180	180	200				لوگر	مرکزی	18
19	Central	Wardak	200	200	200	200	200	200	200		200				وردک	مرکزی	19
20	South	Paktya	170	170	170					180					پکتیا	جنوب	20
21	South	Paktika	180	180	180										پکتیکا	جنوب	21
22	South	Khost				160	160	150	150	200	200				خوست	جنوب	22
23	South	Ghazni	120	120	150	150	150	200	200		200				غزنی	جنوب	23
24	East	Nangarhar	150	150	150	150	150	150	150	140	120				ننگرهار	شرق	24
25	East	Laghman	160	160	160						150				لغمان	شرق	25
26	East	Kunarha	120	120	120	120	120	120	120		200				کنرھا	شرق	26
27	East	Nooristan	150	150	150	150	150	150	150						نورستان	شرق	27
28	South-West	Kandahar	150	150	150	150	150	200	200	200	200				کندهار	جنوب غرب	28
29	South-West	Helmand	150	150	150	200	200	200	200	200	200				هلمند	جنوب غرب	29
30	South-West	Zabul	160	160	160	200	200	200	200	200	200				زابل	جنوب غرب	30
31	South-West	Nimroz	225	250	250	250	300	300	300	200	200				نیمروز	جنوب غرب	31
32	South-West	Uruzgan	200	200	200										اروزگان	جنوب غرب	32

**Annex VI**  
**Retail market prices of selected agricultural commodities**  
 قیمت های امتعه زراعتی مارکیت های ولایات  
 (Source: FAAHM, MAAHF)

**Pair of Oxen Hiring (Afs/Day)**

قلبه گاو افغانی در روز

SN	Region	Province	Jan	Feb	Mar	Apr	May	Jun	Jul	Aug	Sep	Oct	Nov	Dec	ولایت	منطقه	نمبر
1	North	Faryab	400	400	400	350	350	350	350		400				فاریاب	شمال	1
2	North	Juzjan	600	500	600	600	600	600	600		100				جوزجان	شمال	2
3	North	Sar-i-Pul	200	300	350			350	350		400				سر پل	شمال	3
4	North	Balkh	700	800	1000	600	600	600	600	600	700				بلخ	شمال	4
5	North	Samangan	400	400	500						500				سمنگان	شمال	5
6	North-East	Bughlan	450	400	400	600	600				600				بغلان	شمال شرق	6
7	North-East	Kunduz	450	400	400						500				کنندز	شمال شرق	7
8	North-East	Takhar	350	350	350	350	350	300	300						تخار	شمال شرق	8
9	North-East	Badakhshan													بدخشان	شمال شرق	9
10	West	Hirat	500								400				هرات	غرب	10
11	West	Farah	400	400	400						200				فراه	غرب	11
12	West	Badghis	350								200				بادغیس	غرب	12
13	West-Central	Ghor		600	700						500				غور	غرب مرکزی	13
14	West-Central	Bamyan						600	600		850				بامیان	غرب مرکزی	14
15	Central	Kabul	500	500	500	400	400	500	500	800	500				کابل	مرکزی	15
16	Central	Parwan	500	500	500	500	500	350	350						پروان	مرکزی	16
17	Central	Kapisa	500	500	450						500				کاپیسا	مرکزی	17
18	Central	Logar	300	300	300	500	500	700	700	900	1000				لوگر	مرکزی	18
19	Central	Wardak	500	500	500	450	450	450	450		600				وردک	مرکزی	19
20	South	Paktya													پکتیا	جنوب	20
21	South	Paktika													پکتیکا	جنوب	21
22	South	Khost													خوست	جنوب	22
23	South	Ghazni						650	650		500				غزنی	جنوب	23
24	East	Nangarhar	500	500	500	350	350	350	400	400	400				ننگرهار	شرق	24
25	East	Laghman	500	500	500						500				لغمان	شرق	25
26	East	Kunarha	250	250	250	200	200	200	200		450				کنرها	شرق	26
27	East	Nooristan			300	300	300	300	300						نورستان	شرق	27
28	South-West	Kandahar													کندهار	جنوب غرب	28
29	South-West	Helmand													هلمند	جنوب غرب	29
30	South-West	Zabul	500	500	500						750				زابل	جنوب غرب	30
31	South-West	Nimroz													نیمروز	جنوب غرب	31
32	South-West	Uruzgan	600	600	600										اروزگان	جنوب غرب	32

**Annex VI**  
**Retail market prices of selected agricultural commodities**  
 قیمت های امتعه زراعتی مارکیت های ولایات  
 (Source: FAAHM, MAAHF)

**Service Charge for Water Pump (Afs/Hour)**

قیمت واتر پمپ فی ساعت

SN	Region	Province	Jan	Feb	Mar	Apr	May	Jun	Jul	Aug	Sep	Oct	Nov	Dec	ولایت	منطقه	نمبر
1	North	Faryab	250	250	250	200	200	200	200						فاریاب	شمال	1
2	North	Juzjan	250	250	300	200	200	200	200	200	200				جوزجان	شمال	2
3	North	Sar-i-Pul	100	120	200										سر پل	شمال	3
4	North	Balkh	200	250	300	500	500	500	300	200	200				بلخ	شمال	4
5	North	Samangan	150	200	250										سمنگان	شمال	5
6	North-East	Bughlan									200				بغلان	شمال شرق	6
7	North-East	Kunduz													کنندز	شمال شرق	7
8	North-East	Takhar													تخار	شمال شرق	8
9	North-East	Badakhshan													بدخشان	شمال شرق	9
10	West	Hirat	150								200				هرات	غرب	10
11	West	Farah	80	80	80						70				فراه	غرب	11
12	West	Badghis													بادغیس	غرب	12
13	West-Central	Ghor					100				250				غور	غرب مرکزی	13
14	West-Central	Bamyan						170	170						بامیان	غرب مرکزی	14
15	Central	Kabul			120	90	90	120	120	200	100				کابل	مرکزی	15
16	Central	Parwan	120	120	120			200	200						پروان	مرکزی	16
17	Central	Kapisa	350	350	350						400				کاپیسا	مرکزی	17
18	Central	Logar	170	150	150	150	150	150	150	150	170				لوگر	مرکزی	18
19	Central	Wardak	120	120	120	120	120	120	120		90				وردک	مرکزی	19
20	South	Paktya								180					پکتیا	جنوب	20
21	South	Paktika	250	250	250										پکتیکا	جنوب	21
22	South	Khost	200			400	420	250	250		260				خوست	جنوب	22
23	South	Ghazni	150	150	150						150				غزنی	جنوب	23
24	East	Nangarhar	200	200	200	70	70	70	80	80	100				ننگرهار	شرق	24
25	East	Laghman													لغمان	شرق	25
26	East	Kunarha	200	200	200	200	200	200	200						کنرھا	شرق	26
27	East	Nooristan													نورستان	شرق	27
28	South-West	Kandahar	300	300	300	120	120								کندهار	جنوب غرب	28
29	South-West	Helmand	200	200	200	150	150				240				هلمند	جنوب غرب	29
30	South-West	Zabul									300				زابل	جنوب غرب	30
31	South-West	Nimroz													نیمروز	جنوب غرب	31
32	South-West	Uruzgan													اروزگان	جنوب غرب	32

**Annex VI**  
**Retail market prices of selected agricultural commodities**  
 قیمت های امتعه زراعتی مارکیت های ولایات  
 (Source: FAAHM, MAAHF)

**Local Urea (Afs/Kg)**  
 یوریا محلی افغانی / کیلو گرام

SN	Region	Province	Jan	Feb	Mar	Apr	May	Jun	Jul	Aug	Sep	Oct	Nov	Dec	ولایت	منطقه	نمبر
1	North	Faryab	12	12	12	14	14	14	14		14				فاریاب	شمال	1
2	North	Juzjan	10	10	10	11	11	12	12	14					جوزجان	شمال	2
3	North	Sar-i-Pul	11	11	11			13	13	12	13				سر پل	شمال	3
4	North	Balkh	12	12	12	10	10	10	10	10	13				بلخ	شمال	4
5	North	Samangan	12	12	12					13	13				سمنگان	شمال	5
6	North-East	Bughlan	11	12	12	12	12			10	15				بغلان	شمال شرق	6
7	North-East	Kunduz	12	12	13	11	11				12				کنندز	شمال شرق	7
8	North-East	Takhar	9	11	11	10	10	10	10		13				تخار	شمال شرق	8
9	North-East	Badakhshan	14	14	15				12						بدخشان	شمال شرق	9
10	West	Hirat						7	7						هرات	غرب	10
11	West	Farah													فراه	غرب	11
12	West	Badghis													بادغیس	غرب	12
13	West-Central	Ghor													غور	غرب مرکزی	13
14	West-Central	Bamyan						14	14	14	14				بامیان	غرب مرکزی	14
15	Central	Kabul	11	11	11					12	11				کابل	مرکزی	15
16	Central	Parwan	10	10	10	12	12	14	14	11					پروان	مرکزی	16
17	Central	Kapisa								13					کاپیسا	مرکزی	17
18	Central	Logar						12	12						لوگر	مرکزی	18
19	Central	Wardak									12				وردک	مرکزی	19
20	South	Paktya													پکتیا	جنوب	20
21	South	Paktika													پکتیکا	جنوب	21
22	South	Khost						12	12						خوست	جنوب	22
23	South	Ghazni									11				غزنی	جنوب	23
24	East	Nangarhar													ننگرهار	شرق	24
25	East	Laghman													لغمان	شرق	25
26	East	Kunarha													کنرھا	شرق	26
27	East	Nooristan	18	18	16	16	16	16	16						نورستان	شرق	27
28	South-West	Kandahar	10	11	13						11				کندهار	جنوب غرب	28
29	South-West	Helmand													هلمند	جنوب غرب	29
30	South-West	Zabul													زابل	جنوب غرب	30
31	South-West	Nimroz													نیمروز	جنوب غرب	31
32	South-West	Uruzgan													اروزگان	جنوب غرب	32

**Annex VI**  
**Retail market prices of selected agricultural commodities**  
 قیمت های امتعه زراعتی مارکیت های ولایات  
 (Source: FAAHM, MAAHF)

**Urea Imported, best quality (Afs/Kg)**

یوریا وارداتی باکیفیت افغانی / کیلو گرام

SN	Region	Province	Jan	Feb	Mar	Apr	May	Jun	Jul	Aug	Sep	Oct	Nov	Dec	ولایت	منطقه	نمبر
1	North	Faryab	10	10	10	12	12	12	12	12	13				فاریاب	شمال	1
2	North	Juzjan	6	7	8					9					جوزجان	شمال	2
3	North	Sar-i-Pul	10	10	10			12	12		11				سر پل	شمال	3
4	North	Balkh	7	7	7	7	7	8	8	9	9				بلخ	شمال	4
5	North	Samangan	12	12	12						9				سمنگان	شمال	5
6	North-East	Bughlan								12	10				بغلان	شمال شرق	6
7	North-East	Kunduz								10	11				کنندز	شمال شرق	7
8	North-East	Takhar	13	12	12	11	11	11	11		13				تخار	شمال شرق	8
9	North-East	Badakhshan	14	14	15				12						بدخشان	شمال شرق	9
10	West	Hirat	10	10	11					11	12				هرات	غرب	10
11	West	Farah	12	13	13					14	16				فراه	غرب	11
12	West	Badghis	12	12	13						12				بادغیس	غرب	12
13	West-Central	Ghor	12	12	12					14	12				غور	غرب مرکزی	13
14	West-Central	Bamyan	14	14	14	13	13	13	13	12	12				بامیان	غرب مرکزی	14
15	Central	Kabul	11	12	12	11	11	12	12						کابل	مرکزی	15
16	Central	Parwan	9	10	10	13	13	15	15	12					پروان	مرکزی	16
17	Central	Kapisa	12	12	13					15	13				کاپیسا	مرکزی	17
18	Central	Logar	11	11	11	12	12	13	13	12	12				لوگر	مرکزی	18
19	Central	Wardak	11	11	11	12	12	12	12	12	12				وردک	مرکزی	19
20	South	Paktya								11					پکتیا	جنوب	20
21	South	Paktika	11	12	12										پکتیکا	جنوب	21
22	South	Khost	12	11	11	15	15	12	12	11	11				خوست	جنوب	22
23	South	Ghazni	9	10	11					15	12				غزنی	جنوب	23
24	East	Nangarhar	14	14	12	11	11	11	10	10	10				ننگرهار	شرق	24
25	East	Laghman	12	12	12										لغمان	شرق	25
26	East	Kunarha	12	12	12	12	12	12	12	12	12				کنرھا	شرق	26
27	East	Nooristan	20	20	21	22	22	23	23						نورستان	شرق	27
28	South-West	Kandahar	11	12	13	13	13			10	12				کندهار	جنوب غرب	28
29	South-West	Helmand	12	13	14	12	12			12	12				هلمند	جنوب غرب	29
30	South-West	Zabul	15	15	17	12	12			16	11				زابل	جنوب غرب	30
31	South-West	Nimroz	12	12	12	10	10	9	9						نیمروز	جنوب غرب	31
32	South-West	Uruzgan	12	12	14										اروزگان	جنوب غرب	32

**Annex VI**  
**Retail market prices of selected agricultural commodities**  
 قیمت های امتعه زراعتی مارکیت های ولایات  
 (Source: FAAHM, MAAHF)

**Best Quality DAP (Afs/Kg)**

دی ای پی با کیفیت کیو گرام / افغانی

SN	Region	Province	Jan	Feb	Mar	Apr	May	Jun	Jul	Aug	Sep	Oct	Nov	Dec	ولایت	منطقه	نمبر
1	North	Faryab	10	10	10	9	9	9	9	10	14				فاریاب	شمال	1
2	North	Juzjan	10	10	10					9					جوزجان	شمال	2
3	North	Sar-i-Pul	14	14	14			11	11	12	21				سر پل	شمال	3
4	North	Balkh	16	16	16	16	16	15	10	8	15				بلخ	شمال	4
5	North	Samangan	10	10	10					18					سمنگان	شمال	5
6	North-East	Bughlan	18	18	18	20	20			30	24				بغلان	شمال شرق	6
7	North-East	Kunduz	18	18	18	18	18			10	22				کنندز	شمال شرق	7
8	North-East	Takhar	18	18	18	12	12	12	12		25				تخار	شمال شرق	8
9	North-East	Badakhshan	23	23	23										بدخشان	شمال شرق	9
10	West	Hirat	24	24	24	24	24	24	24	24	22				هرات	غرب	10
11	West	Farah	25	25	25					26	26				فراه	غرب	11
12	West	Badghis	25	26	26					16	17				بادغیس	غرب	12
13	West-Central	Ghor	26	26	26					24	21				غور	غرب مرکزی	13
14	West-Central	Bamyan	18	18	18	20	20	25	25	23	23				بامیان	غرب مرکزی	14
15	Central	Kabul	19	20	20	24	24	23	23	22	24				کابل	مرکزی	15
16	Central	Parwan	17	18	18	26	25	25	25	14					پروان	مرکزی	16
17	Central	Kapisa	22	22	22					22	22				کاپیسا	مرکزی	17
18	Central	Logar	25	25	27	25	25	25	25	22	22				لوگر	مرکزی	18
19	Central	Wardak	20	20	20	22	22	22	22	24	24				وردک	مرکزی	19
20	South	Paktya	18	20	29					22					پکتیا	جنوب	20
21	South	Paktika	25	26	28										پکتیکا	جنوب	21
22	South	Khost	20	25	27	25	25	22	22	20	21				خوست	جنوب	22
23	South	Ghazni	23	23	25	26	26	24	24	22	24				غزنی	جنوب	23
24	East	Nangarhar	19	18	17	21	21	20	20	22	18				ننگرهار	شرق	24
25	East	Laghman	21	22	22						22				لغمان	شرق	25
26	East	Kunarha	24	24	24	25	25	25	25	25	23				کنرھا	شرق	26
27	East	Nooristan			26	26	26	26	26						نورستان	شرق	27
28	South-West	Kandahar	20	22	23	24	24			20	26				کندهار	جنوب غرب	28
29	South-West	Helmand	23	23	25	24	24			20	22				هلمند	جنوب غرب	29
30	South-West	Zabul	20	20	20	22	22			20	21				زابل	جنوب غرب	30
31	South-West	Nimroz	17	17	17	16	16	15	15						نیمروز	جنوب غرب	31
32	South-West	Uruzgan	21	21	24										اروزگان	جنوب غرب	32



**Annex VI**  
**Retail market prices of selected agricultural commodities**  
 قیمت های امتعه زراعتی مارکیت های ولایات  
 (Source: FAAHM, MAAHF)

**Tractor Hiring Charge (Afs/Hour)**

تراکتور افغانی / ساعت

SN	Region	Province	Jan	Feb	Mar	Apr	May	Jun	Jul	Aug	Sep	Oct	Nov	Dec	ولایت	منطقه	نمبر
1	North	Faryab						420	420		600				فاریاب	شمال	1
2	North	Juzjan						400	400		400				جوزجان	شمال	2
3	North	Sar-i-Pul						450	450		500				سر پل	شمال	3
4	North	Balkh				400	600	600	500	500	500				بلخ	شمال	4
5	North	Samangan									670				سمنگان	شمال	5
6	North-East	Bughlan				500	500				450				بغلان	شمال شرق	6
7	North-East	Kunduz				500	500				500				کنندز	شمال شرق	7
8	North-East	Takhar	400	400	400						550				تخار	شمال شرق	8
9	North-East	Badakhshan													بدخشان	شمال شرق	9
10	West	Hirat									600				هرات	غرب	10
11	West	Farah									450				فراه	غرب	11
12	West	Badghis									470				بادغیس	غرب	12
13	West-Central	Ghor									700				غور	غرب مرکزی	13
14	West-Central	Bamyan						400	400		750				بامیان	غرب مرکزی	14
15	Central	Kabul	350	350	350	350	350	350	350		300				کابل	مرکزی	15
16	Central	Parwan	300	300	430	450	300	250	250						پروان	مرکزی	16
17	Central	Kapisa									600				کاپیسا	مرکزی	17
18	Central	Logar	300	300	300	350	350	370	370	400	400				لوگر	مرکزی	18
19	Central	Wardak									600				وردک	مرکزی	19
20	South	Paktya	200	250	300										پکتیا	جنوب	20
21	South	Paktika													پکتیکا	جنوب	21
22	South	Khost	200	300	350	360	400	350	350		345				خوست	جنوب	22
23	South	Ghazni	400	400	500	450	450	650	650		450				غزنی	جنوب	23
24	East	Nangarhar	500	500	500	400	400	400	400	400	400				ننگرهار	شرق	24
25	East	Laghman	500	500	500						400				لغمان	شرق	25
26	East	Kunarha	500	500	500	250	250	250	250		750				کنرھا	شرق	26
27	East	Nooristan													نورستان	شرق	27
28	South-West	Kandahar				300	300				400				کندهار	جنوب غرب	28
29	South-West	Helmand				400	400				500				هلمند	جنوب غرب	29
30	South-West	Zabul									500				زابل	جنوب غرب	30
31	South-West	Nimroz													نیمروز	جنوب غرب	31
32	South-West	Uruzgan													اروزگان	جنوب غرب	32

Annex VII

Weekly Market price of agricultural commodities/services (July-September 2005)  
[Source: Vulnerability Mapping Unit (VAM), WFP Afghanistan]

Location	Commodity/Service	Jul-05				Aug-05				Sep-05			
		Week 1	Week 2	Week 3	Week 4	Week 1	Week 2	Week 3	Week 4	Week 1	Week 2	Week 3	Week 4
		Kabul	12.5	13.0	13.0	13.5	13.5	13.3	13.2	13.2	13.0	13.0	13.0
Kandahar	10.6	10.6	10.0	10.0	10.0	11.1	11.2	11.2	11.2	11.2	11.2	10.9	
Jalalabad	9.0	9.0	9.0	9.0	9.3	9.3	9.3	9.7	9.7	10.0	10.0	10.0	
Heart	10.3	10.2	10.0	10.0	10.0	10.0	10.0	10.0	10.3	10.5	11.0	10.8	
Mazar	10.0	9.5	9.0	9.5	9.0	10.0	10.0	10.0	10.0	10.0	10.0	10.0	
Faizabad	11.4	11.4	11.4	11.4	11.4	12.1	10.0	11.4	11.4	11.4	12.1	12.0	
Bamyan	12.3	12.0	12.0	12.0	12.0	10.0	11.0	10.0	11.0	10.5	10.2	11.0	
Maimana	10.0	10.0	10.0	10.0	11.0	11.0	11.5	12.0	12.0	12.0	12.0	12.5	
Kabul	Wheat flour (kg)	14.1	14.1	14.1	14.1	14.3	14.2	14.0	14.0	13.8	13.6	13.6	13.5
Kandahar	Wheat flour (kg)	12.6	12.6	12.6	12.8	12.9	12.6	12.5	12.4	12.4	12.4	12.6	12.6
Jalalabad	Wheat flour (kg)	12.8	12.8	12.8	12.8	13.0	13.2	13.2	13.3	13.3	13.3	13.3	13.3
Heart	Wheat flour (kg)	13.8	13.8	13.8	14.0	14.5	14.4	14.4	14.3	14.5	13.6	13.6	14.5
Mazar	Wheat flour (kg)	11.0	11.0	11.0	11.5	11.0	12.0	12.0	12.0	12.0	12.5	12.0	12.0
Faizabad	Wheat flour (kg)	14.3	12.9	14.2	14.2	14.3	13.6	14.3	14.8	15.7	15.0	15.0	15.0
Bamyan	Wheat flour (kg)	14.3	14.0	14.0	14.1	14.0	14.0	14.0	14.0	13.8	14.2	14.0	14.0
Maimana	Wheat flour (kg)	13.5	13.5	14.0	14.0	13.0	14.0	14.5	14.5	13.5	14.0	14.0	14.5
Kabul	Bread (kg)	18.0	18.0	18.0	30.0	18.0	18.0	18.0	18.0	18.0	18.0	18.0	18.0
Kandahar	Bread (kg)	20.0	20.0	20.0	20.0	20.0	20.0	20.0	20.0	20.0	20.0	20.0	20.0
Jalalabad	Bread (kg)	17.6	17.6	17.6	17.6	17.6	17.6	17.6	17.6	17.6	17.6	17.6	17.6
Heart	Bread (kg)	20.0	20.0	20.0	20.0	20.0	20.0	20.0	20.0	20.0	20.0	20.0	20.0
Mazar	Bread (kg)	20.0	20.0	20.0	20.0	20.0	20.0	20.0	20.0	20.0	20.0	20.0	20.0
Faizabad	Bread (kg)	33.3	33.3	33.3	33.3	33.3	33.3	33.3	33.3	33.3	33.3	33.3	33.3
Bamyan	Bread (kg)	30.0	30.0	30.0	30.0	30.0	30.0	18.2	18.2	30.0	30.0	30.0	17.8
Maimana	Bread (kg)	33.3	33.3	33.3	33.3	33.3	33.3	33.3	33.3	33.3	33.3	33.0	33.3

Annex VII

Weekly Market price of agricultural commodities/services (July-September 2005)  
[Source: Vulnerability Mapping Unit (VAM), WFP Afghanistan]

Location	Commodity/Service	Jul-05				Aug-05				Sep-05			
		Week 1	Week 2	Week 3	Week 4	Week 1	Week 2	Week 3	Week 4	Week 1	Week 2	Week 3	Week 4
		Kabul	Diesel/litre	24.0	24.0	24.0	25.0	25.5	26.0	27.0	27.0	27.0	29.0
Kandahar	Diesel/litre	22.5	24.0	25.0	25.0	25.0	24.5	25.0	27.5	30.0	30.0	30.0	30.0
Jalalabad	Diesel/litre	25.2	25.0	25.3	26.6	26.3	26.3	26.8	26.8	26.8	34.3	34.3	32.6
Heart	Diesel/litre	22.0	22.0	25.0	25.0	25.0	25.0	25.0	25.0	25.0	27.0	27.0	27.0
Mazar	Diesel/litre	24.0	24.0	24.0	24.0	24.0	25.0	24.0	40.0	32.0	30.0	30.0	32.0
Faizabad	Diesel/litre	28.0	28.0	29.0	28.0	28.0	30.0	32.0	42.0	41.0	40.0	40.0	40.0
Bamyan	Diesel/litre	28.0	27.0	27.0	27.0	28.0	28.0	28.0	31.0	39.0	39.0	37.0	37.0
Maimana	Diesel/litre	24.5	25.0	25.0	25.0	26.0	26.0	27.0	27.0	32.0	29.0	30.0	30.0
Kabul	One-year female sheep, live	4,850	4,850	4,850	4,890	4,800	4,650	4,850	4,800	4,750	4,800	4,900	4,700
Kandahar	One-year female sheep, live	4,000	4,000	4,000	4,000	4,000	4,000	4,000	4,000	4,000	4,000	4,000	4,000
Jalalabad	One-year female sheep, live	4,200	4,200	4,200	4,166	4,166	4,166	4,166	4,266	4,066	3,866	3,866	3,866
Heart	One-year female sheep, live	3,800	3,900	3,800	3,850	3,800	3,750	3,800	3,700	3,650	3,600	3,600	3,500
Mazar	One-year female sheep, live	3,800	3,800	3,200	3,300	3,200	3,000	3,100	3,200	3,400	3,500	3,500	3,500
Faizabad	One-year female sheep, live	5,000	5,000	5,000	5,000	5,000	5,000	5,000	5,000	5,000	5,000	5,000	5,000
Bamyan	One-year female sheep, live	3,830	3,800	3,800	3,750	3,730	3,500	2,000	3,720	3,700	3,700	4,000	4,000
Maimana	One-year female sheep, live	4,300	4,500	4,500	4,500	3,500	4,000	4,000	4,000	3,800	3,600	3,800	3,800
Kabul	Casual labour/day	170.0	180.0	180.0	180.0	180.0	180.0	180.0	175.0	175.0	180.0	180.0	175.0
Kandahar	Casual labour/day	150.0	150.0	150.0	150.0	150.0	150.0	150.0	150.0	150.0	150.0	150.0	150.0
Jalalabad	Casual labour/day	126.6	126.6	126.6	125.0	126.6	126.6	126.6	126.6	126.6	126.6	126.6	126.6
Heart	Casual labour/day	155.0	160.0	160.0	160.0	160.0	160.0	160.0	170.0	170.0	170.0	170.0	170.0
Mazar	Casual labour/day	180.0	180.0	170.0	180.0	180.0	170.0	180.0	180.0	180.0	170.0	170.0	170.0
Faizabad	Casual labour/day	200.0	200.0	200.0	200.0	200.0	200.0	200.0	200.0	200.0	250.0	250.0	250.0
Bamyan	Casual labour/day	190.0	175.0	175.0	170.0	170.0	170.0	200.0	170.0	175.0	180.0	180.0	200.0
Maimana	Casual labour/day	200.0	200.0	200.0	180.0	240.0	220.0	200.0	200.0	200.0	200.0	200.0	200.0

## Annex VIII

### Additional Information at provincial levels

<b>Region</b>	<b>Province</b>	<b>Narrative summary of agricultural condition and problems</b>
North	Faryab	Rust and smut in wheat seen in some areas Fungal disease in potato is sporadic FMD and enterotoxaemia seen in many parts
North	Jawzjan	Fruit fly and aphid damage noticed in horticulture crops in some parts Bees damaged vines in parts of the province Post-harvest damage caused by rodents is on rise A new disease in camels has been reported
North	Saripul	Fruit fly adversely affected 550 hectares of melon and water melon Lack of marketing facilities for agricultural commodities Lack of agricultural staff in Saiad, Kohistanatand Gosfandi and Sozma Qala districts Inadequate supply of wheat seed and chemical fertilizer; sub-standard quality is also a problem
North	Balkh	Fruit fly was seen in some places Farm lands are occupied by some people for building their houses Compound wall needed for protection of agriculture lands and research farms Rust in wheat was seen in some areas
North	Samangan	FMD and PPR reported widely in the last two months; now contained
North- East	Kundoz	Cotton and mung beans were adversely affected by diseases Aphid damaged fruit trees Rodents are big problems
North- East	Takhar	Aphid damaged fruit trees Codling moth damaged apple and pears Aphid damaged melon

<b>Region</b>	<b>Province</b>	<b>Narrative summary of agricultural condition and problems</b>
North- East	Badakhshan	Anthrax and enterotoxaemia prevalent in some areas Borer worm damaged fruit trees Wilting in pepper and tomatoes is common
West	Hirat	Sunn pest (in wheat) in Koshk, Gulran, Koshk Kohna, Kohsan and Korokh districts Powdery mildew reported in grapes in Oba district.
West	Farah	FMD reported in some areas Sheep pox exists in some areas Vines damaged by powdery mildew and Qarghana
West	Badghis	Anthrax, enterotoxaemia, sheep pox and FMD common New Castle and Pasteurellosis were seen in many areas Vaccines are not available for prevention Fruit fly, aphid, and powder mildew in vegetables caused considerable damages Rodents reported to be one of the main problems
West - Central	Ghor	PPR in Tolak district Rust in wheat quite widespread Sunn pest and brown tail moth were seen in the some areas
West - Central	Bamyan	Rust in wheat was seen in some areas
Central	Kabul	Aphid in the vines is one of the main problems Lack of improved seeds Rust and brown-tail moth quite prominent in some areas Aphid seen in some areas Death of animals in Shakardara, Guldara and Estalif districts due to various diseases
Central	Parwan	Powdery mildew in grapes; chemical is being used for the control Qarghana exists in Dolana, Bagram and central part of Parwan Onion and tomato adversely affected by an unknown disease, which results in shrinking of the leaves and falling-down of stems Potato flower adversely affected by worms

<b>Region</b>	<b>Province</b>	<b>Narrative summary of agricultural condition and problems</b>
Central	Kapisa	Improved wheat adversely affected by rust in some parts Fruit plants adversely affected by aphid Qarghana in grapes, mug bean, beans and cotton Pastreutiosis common Powdery mildew in grapes reduced now Pomegranate adversely affected by aphids and worms. The sample has been sent to the plant protection department for the analysis Nematodes damaged peppers FMD is under control now
Central	Logar	Death of 200-300 animals due to various diseases Lack of equipment for vaccine storage 300 ha of grapes adversely affected by crown gall (smut) and powdery mildew Late-blight damaged potatoes in some areas
Central	Wardak/Maidan	Outbreak of FMD and successful treatment New Castle exists widely Codling moth is a problem in some areas Rodents are problems
South	Paktya	Smut in wheat and maize in some places Grapes damaged by a disease that causes the falling of grape bunches
South	Khost	Anthrax is a common phenomenon Black leg has been seen in all districts
South	Ghazni	Smut in Moqor district Lack of vaccines in Nawar, Qara baghand Andar Lack of farm power; oxen hiring is very expensive, especially during peak farming periods

<b>Region</b>	<b>Province</b>	<b>Narrative summary of agricultural condition and problems</b>
East	Nangarhar	Cattle death due to diseases reported in Behsood district Enterotoxaemia reported in Noor, Batikot and Sorkhroad districts; now under control. New Castle is quite common Mealy bug and leaf cutter damaged at about 4,000 fruit trees
East	Laghman	Rust and Smut in wheat in some areas Powdery mildew affected 300 ha of grapes; insects pests like Gosala sarak and beetles have caused damages
South-West	Kandahar	Rust damaged wheat in various areas
South-West	Hilmand	Agro-chemicals for crops and livestock are not available on time Lots of vegetables and fruits are lost due to a lack of cold storage facilities
South -West	Nimroz	Lack of rain and water