



Agricultural Commodity Price Bulletin (January 2006)

**Ministry of Agriculture and Food
Planning Department
Marketing, Economics and Statistics Division
(FAAHM)
Kabul, 5 February 2006**

Abbreviations

DAP	Diammonium Phosphate
FAAHM	Food, Agriculture and Animal Husbandry Information Management Unit
FAO	Food and Agriculture Organization of the United Nations
FOB	Free On Board
MAF	Ministry of Agriculture and Food
WFP	World Food Program

Contact us

Comments on this bulletin are most welcome. Contact us at:

Haqiqatpal Ghulam Rabbani, Director, FAAHM, MAF

GhulamRabbani.haqiqatpal@af.fao.org

Mobile: +93-(0)70-284879



The FAO project “Support to FAAHM in the MAF” (GCP/AFG/034/GER) provided technical guidance and financial support for the publication of this bulletin. The project is funded by the Government of Germany.

Afghanistan Map with Provincial Boundaries



Source: Afghanistan Information Management Service (AIMS)

Contents

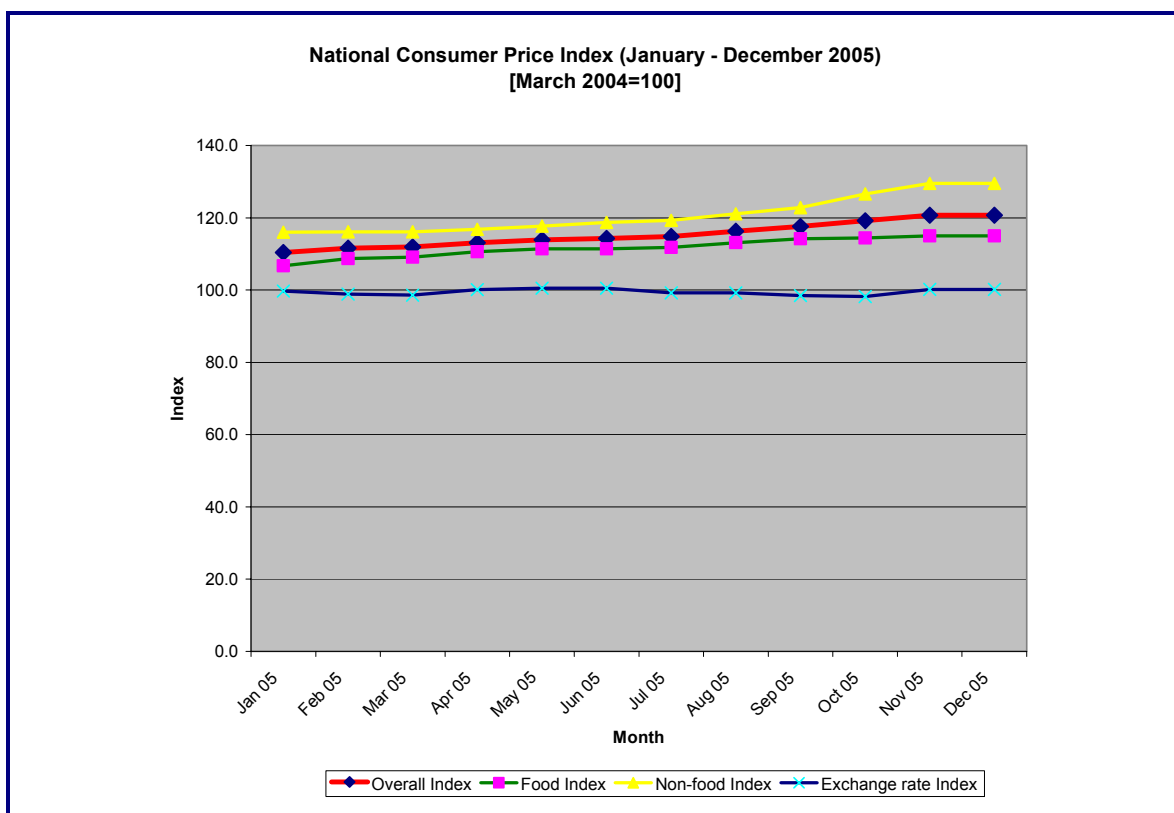
1.	Consumer Price Index	1
2.	Prices of various agricultural commodities.....	3
2.1.	<i>International market price of wheat</i>	3
2.2.	<i>Wheat prices in local markets</i>	4
2.3.	<i>Livestock and livestock products prices</i>	5
2.4.	<i>Labor costs</i>	8
2.5.	<i>Fertilizer prices</i>	10
<i>Annex I:</i>	<i>National Consumer Price Index (CPI), January-December 2005(Source: CSO)</i>	
<i>Annex II:</i>	<i>Kabul Consumer Price Index (CPI), January-December 2005(Source: CSO)</i>	
<i>Annex III:</i>	<i>Monthly prices of 33 agricultural commodities, January2006 (Source: FAAHM)</i>	
<i>Annex IV:</i>	<i>Weekly prices of six commodities, November 2005 to January 2006 (Source: WFP)</i>	

**Ministry of Agriculture and Food
Planning Department
Marketing, Economics and Statistics Division
(FAAHM)**

**Agricultural Commodity Price Bulletin
(January 2006)**

1. Consumer Price Index

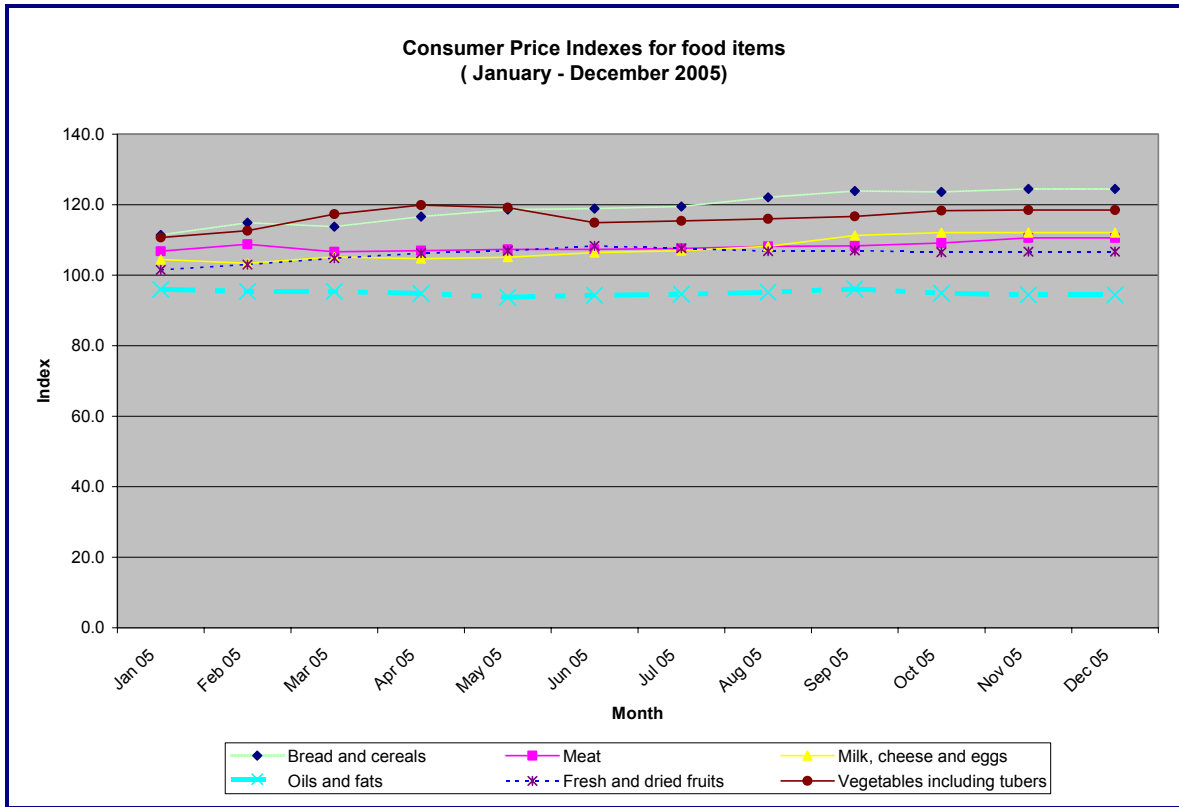
National Consumer Price Index¹ (CPI) rose by 11.4 percent points in 2005.² The annual increases in the national food and non-food indexes were 10.1 and 13.4 percent points, respectively. The annual increase in the exchange-rate index was 1.6 percent-point only. (Graph below and Annex I)



¹ Consumer Price Index (CPI) is an index of the prices of consumer goods and services purchased by the consumers. It is used to measure the rate of inflation or the cost of living.

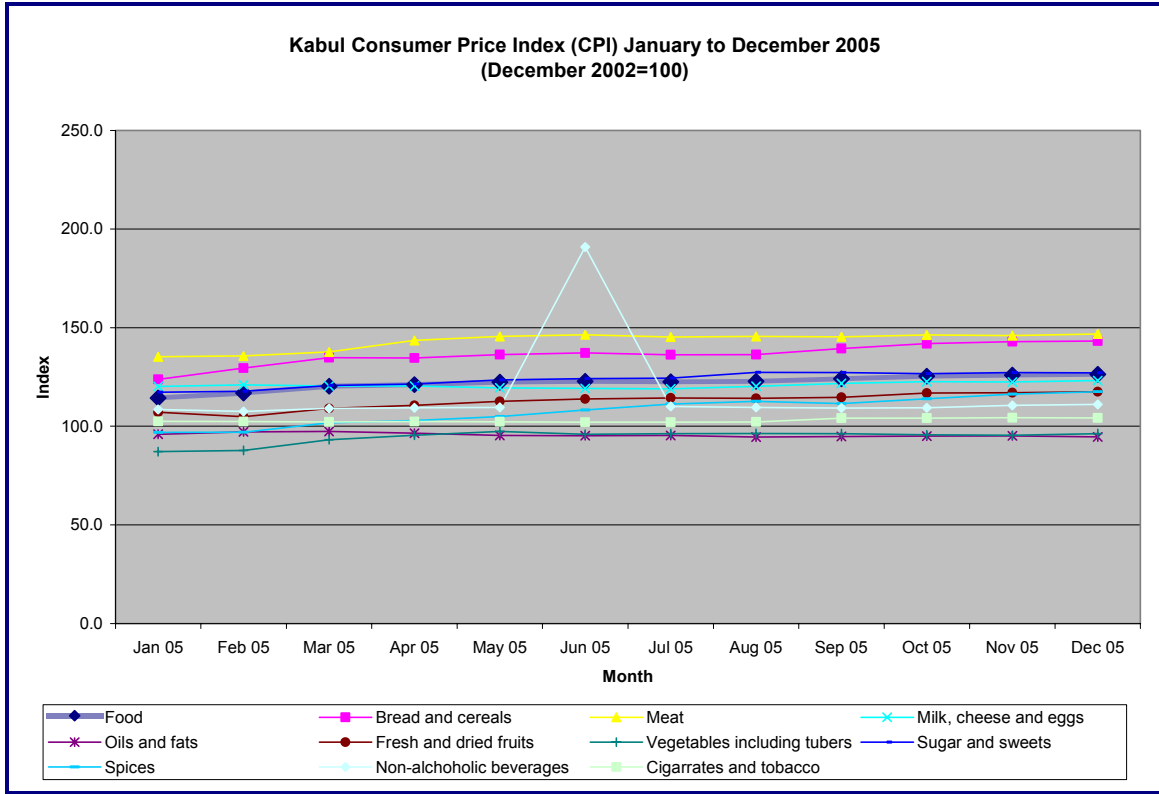
² Source: Central Statistics Office (CSO)

Bread and cereals consumption index, which has a fourth share in the national CPI, showed the highest increase among the food items. This index went up by 16.8 percent points in 2005. The annual increases were substantial also in the cases of “sugar and sweets” (index up by 11.8 percent points) and “vegetables and tubers” (index up by 10.8 percent points).



The index increase in the cases of meat, milk, cheese and eggs in the one-year period was 7.5 percent point. Fresh and dry fruits exhibited a slightly increasing price trend (up 1.6 percent points), whilst the index prices of oil and fats decreased slightly (down 0.6 percent points). (Graph above and Annex I)

Kabul CPI increased by 14.3 percent points in 2005. This increase was influenced more by the increases in the consumer prices of non-food items than by the increases in food items. The annual price increase in Kabul was substantial in the case of spices also (index up by 21 percent-points). The increase in the index prices of meat, milk, cheese and eggs in the one-year period was 12 percent point. The index prices of fresh and dry fruits as well as sugar and sweets increased by 10 percent points. The index prices of oil and fats showed insignificant changes. (Graph below and Annex II)



2. Prices of various agricultural commodities

2.1. International market price of wheat

Since August 2005 the price of Argentina Trigopan Upriver wheat³ showed a generally decreasing trend. The prices of US hard and US soft wheat⁴ showed a steady increase in August to October 2005, but a downwardly trend in their prices was observed in November and December. International export price of wheat in December⁵ ranged between US\$133-167 per tonne (6.7-8.4 Afs/kg).

In January 2006, the prices of US Hard Red Winter (HRW) and Soft Red Winter⁶ were US\$166-176/tonne and US\$144/tonne respectively.⁷

³ FOB; Persian Gulf

⁴ FOB; US Gulf

⁵ Source: International Grain Council and FAO.

⁶ FOB; Gulf of Mexico and Pacific North West

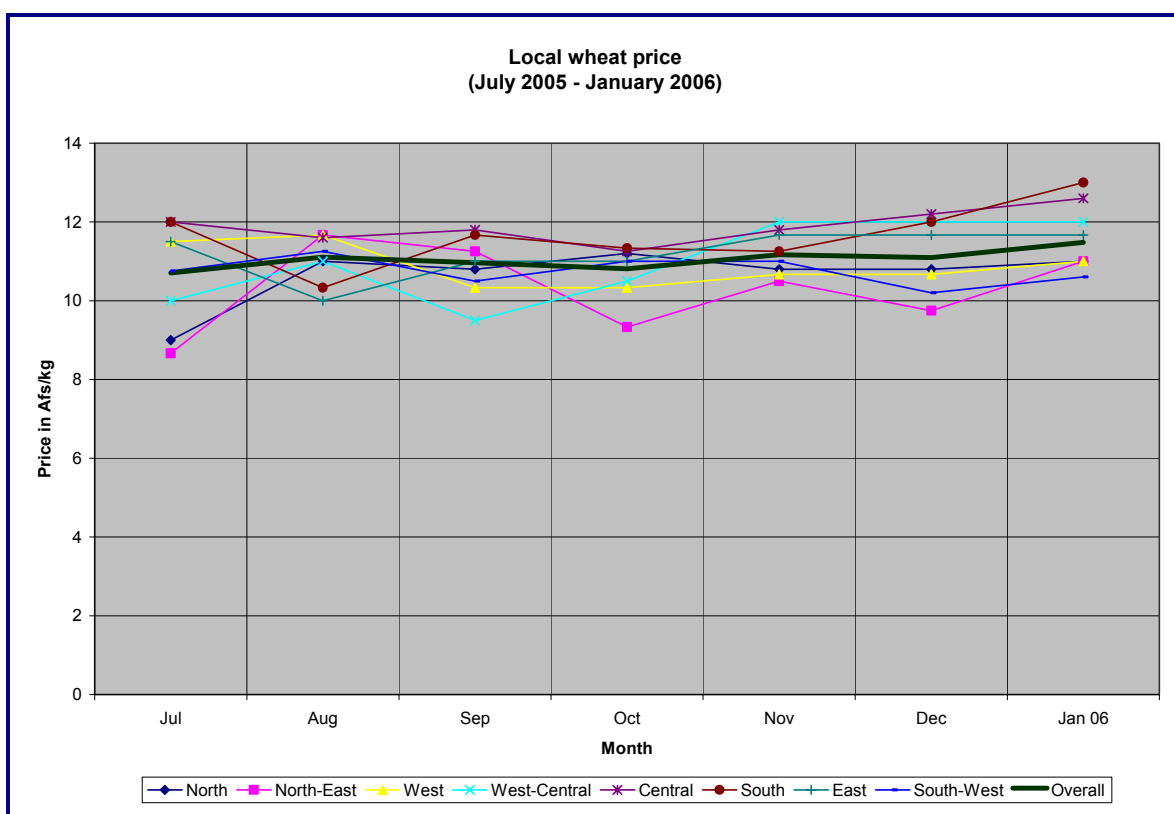
⁷ Source: US Wheat Associates

2.2. Wheat prices in local markets

The price of wheat shows an increasing trend in general. In January 2006 the average price of local wheat was Afs 11.5/kg, which is 3.5% increase over the December 2005 price.

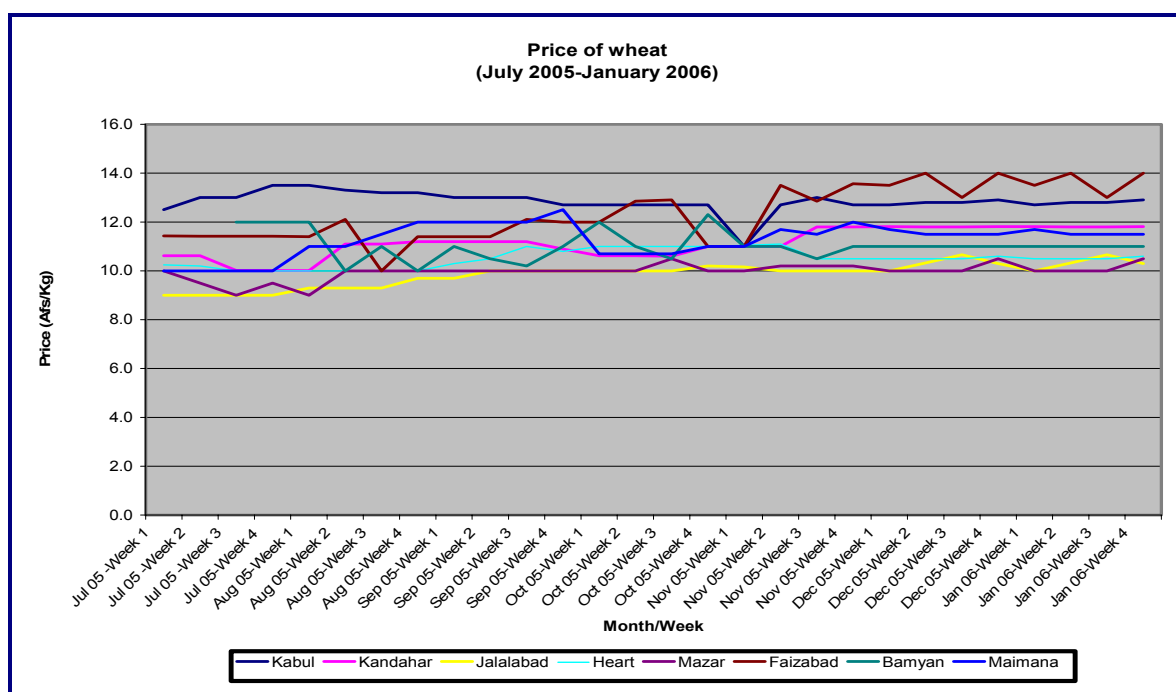
Table 2: Average prices of local wheat in various regions (Afs/kg)

Region	January 2006	December 2005	% change compared to the last month
North	11.0	10.8	1.9
North-East	11.0	9.8	12.8
West	11.0	10.7	3.1
West-Central	12.0	12.0	--
Central	12.6	12.2	3.3
South	13.0	12.0	8.3
East	11.7	11.7	--
South-West	10.6	10.2	3.9
Overall	11.5	11.1	3.5



The average price of local wheat was slightly above Afs 11/kg in January-March 2005. The price variations across provinces were very wide in that period. The price was showing a slightly increasing tendency up to mid-May. Thereafter, the wheat price decreased moderately up to June, which can be satisfactorily explained by the bumper harvest prospects in 2005. A price stabilization tendency was seen from June. The price variations across provinces considerably narrowed in December 2005 and January 2006 (10.6-13.0 Afs/kg on average). The price of wheat in urban places has been stable after the harvest. This means that the local grain markets have performed well in 2005.⁸ (Annex III)

Weekly wheat prices for July 2005-January 2006 in eight markets are presented below⁹.



2.3. Livestock and livestock products prices

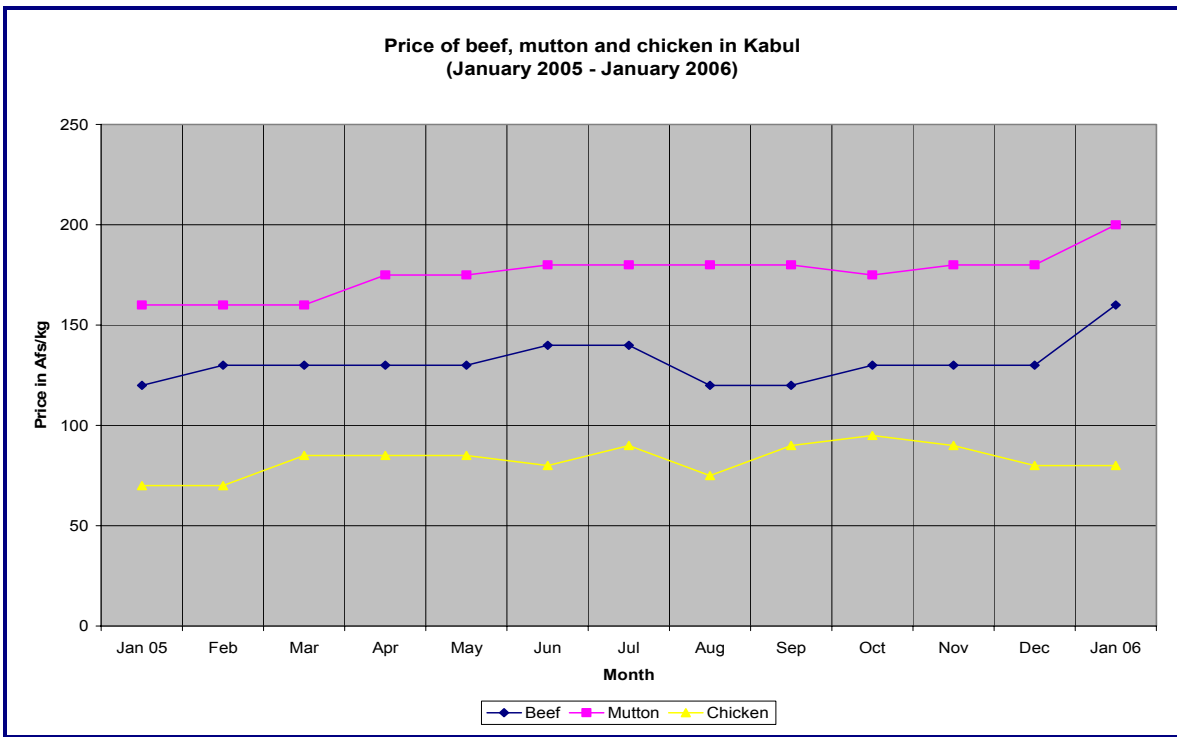
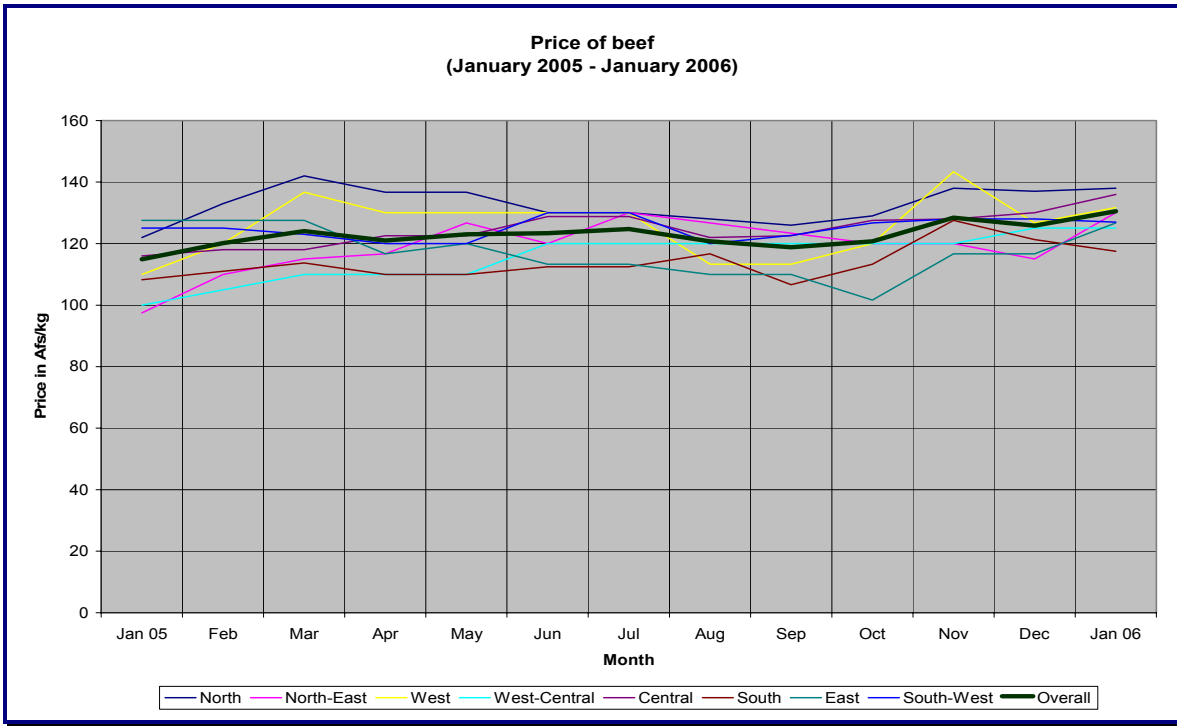
The average prices of beef and mutton in January 2006 were Afs 131/kg and 174/kg, respectively. These prices are higher than the respective prices in December 2005. (Annex III)

**Table 3: Average prices of beef and mutton
(December 2005 and January 2006)**

Region	December 2005	January 2006	% increase/decrease
Beef	125.8	130.5	3.7
Mutton	164.2	174.0	6.0

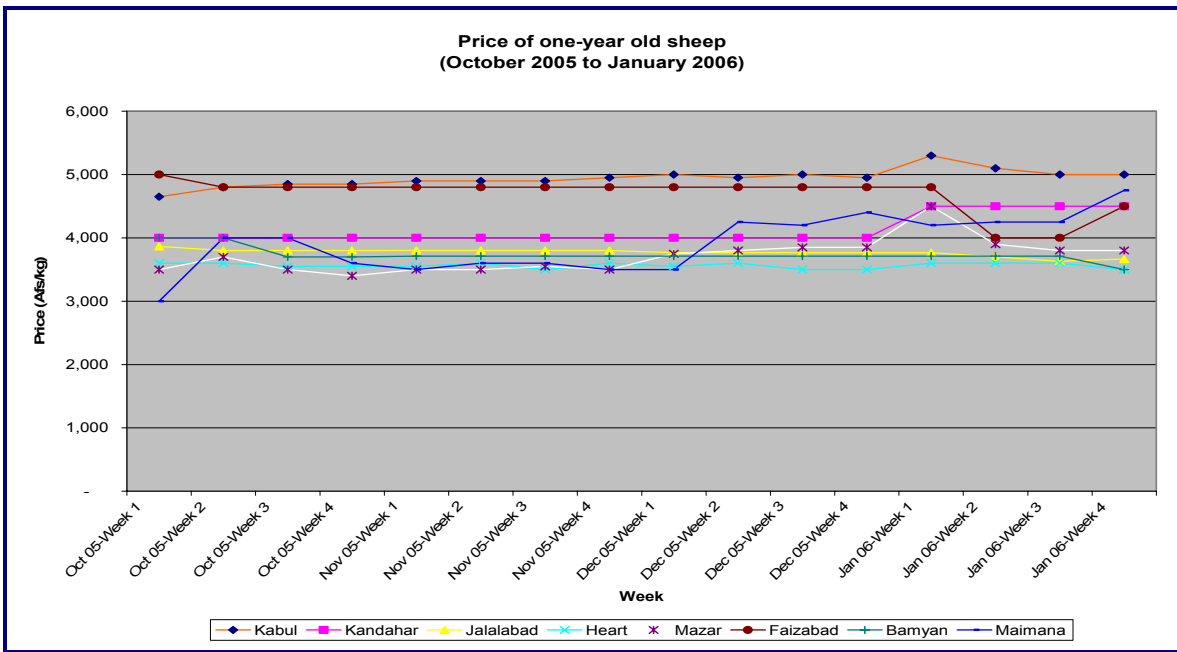
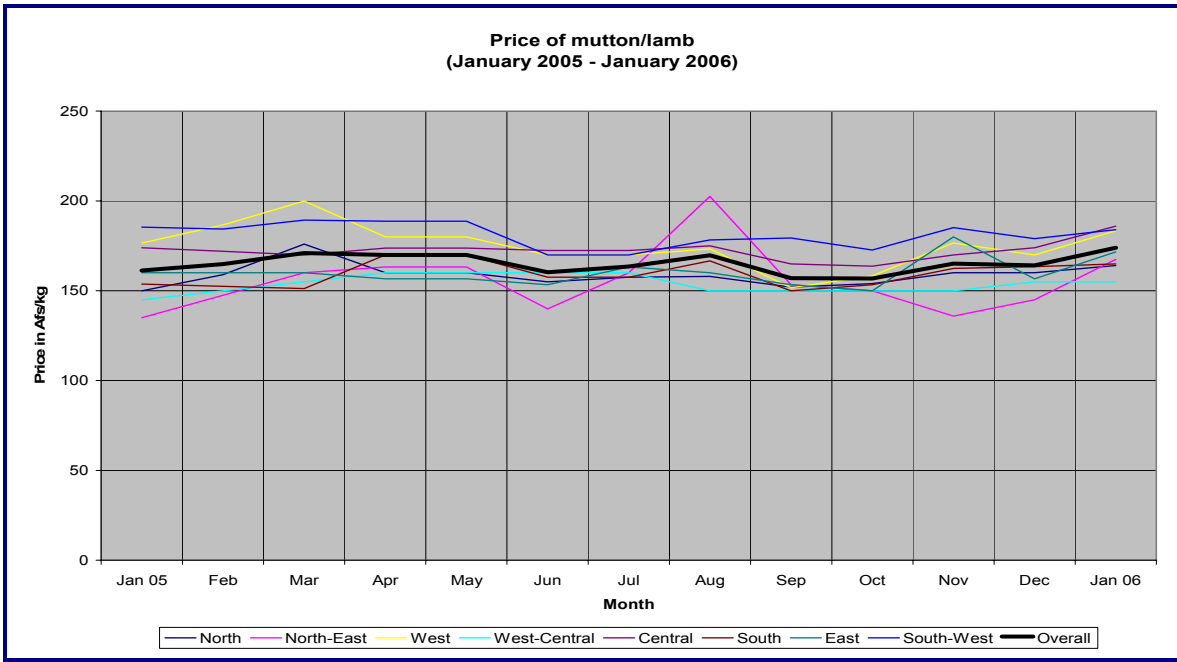
⁸ Source: FAAHM

⁹ Source: WFP



There was a slight increase in the price of mutton from January to March 2005. Thereafter, decrease or at par price was observed up to June/July. This was followed by a slightly upward price movement before reaching or off-setting the January 2004 level in November

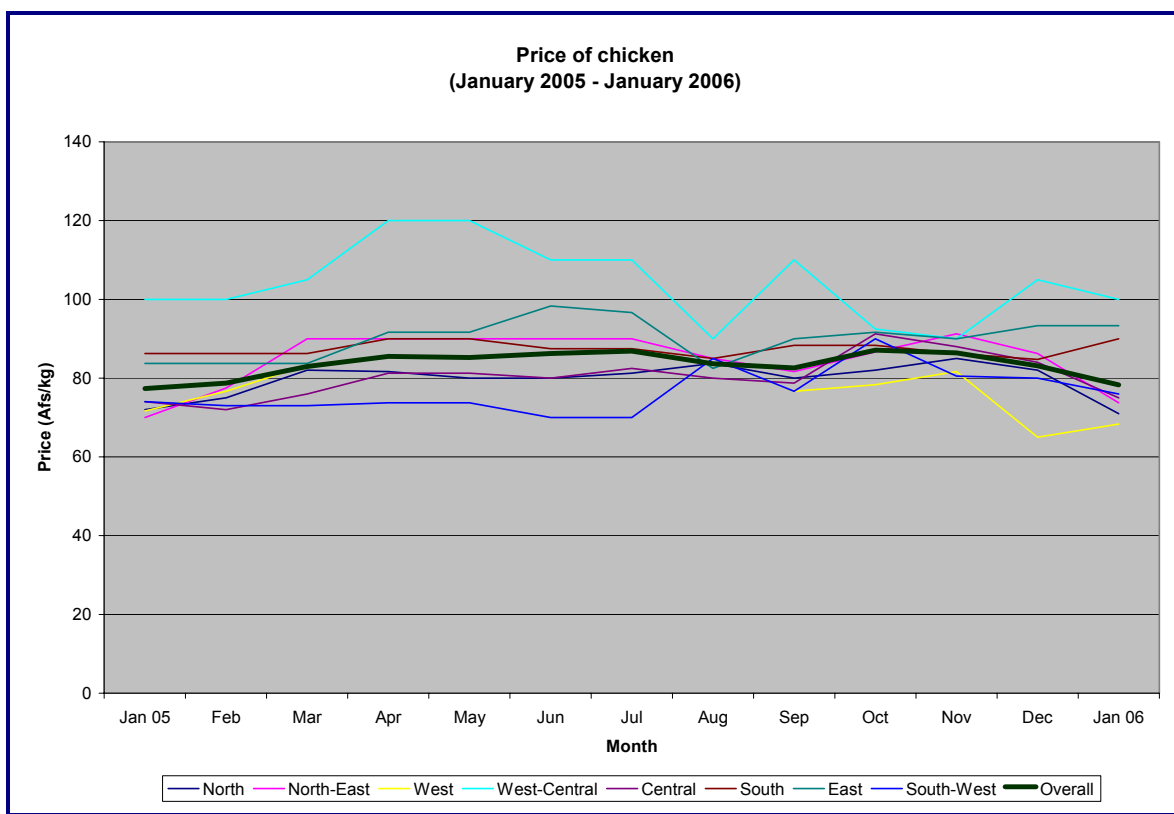
and/or December 2005. Like beef, a steady increase in price of mutton was observed in January, which is a normal phenomenon because of the highest demand for this commodity in the month. The price of chicken showed a decreasing trend in the month.



As expected, the seasonal variations in the price of sheep were lesser in regulated markets. No abnormal changes in the price of one-year sheep have been observed in the recent months.

In January 2006 average price of a one-year sheep ranged between Afs 3,500 to 5,000 in most of the eight reporting locations¹⁰. In earlier months of 2005 sheep were cheapest in the north, but the seasonal price variations in these areas were significantly higher. Thereafter, the price of sheep exhibited a consistent seasonal price movement up to May in all areas. The price was moderately higher in January to May. In the East and West-Central regions, there was a decrease in the price from June to August, before the price in September became higher than in August. In other areas, the price rose higher from June to August, with a mixed trend in September.

In January 2006 the price of chicken was Afs 78/kg, on average. Since November 2005 the price of chicken has a decreasing trend in most of the regions. Overall, compared to the 2005 December price, the price of chicken in January 2006 was lower by 5.8%. This decrease can be satisfactorily attributed to lower demand for chicken and the resulting substitution effect, which are reflected in the degree of increases in the prices of beef and mutton in the latest month. However, the price in January 2006 is comparable to the price in January 2005. (Annex III)

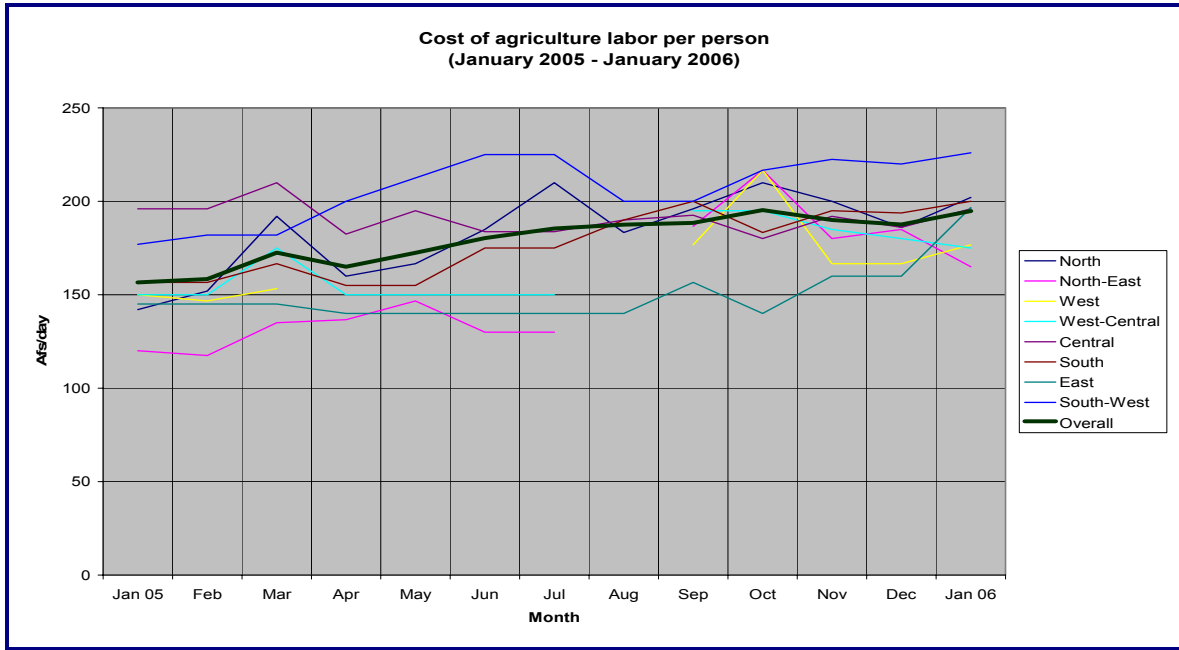


2.4. Labor costs

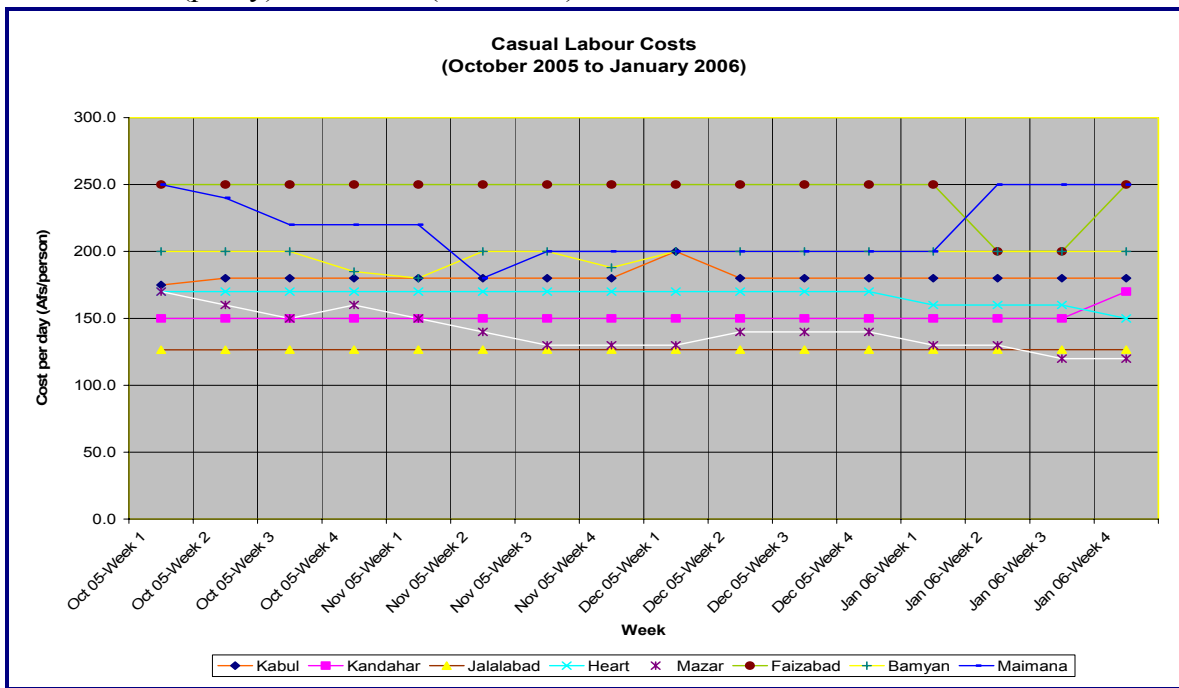
Average agriculture labor cost was around 195 Afs/person/day in January 2006. The cost shows a large variation across provinces and between seasons. The peak demands for

¹⁰ Source: WFP

agricultural labor are in June/July and in October to January, when the main farm operations are carried-out. (Annex III)



The cost of casual labor¹¹ ranged between 127-250 Afs/day in January 2006. These costs do not show much seasonal variations. The casual labor costs are lowest in Jalalabad (East), Kandahar (South-west) and Herat (West), in that order. North and North-East are unstable market for casual labor. The labor costs are stable, especially in Central, East, South-west, West-Central (partly) and West. (Annex IV)



¹¹ Source: WFP

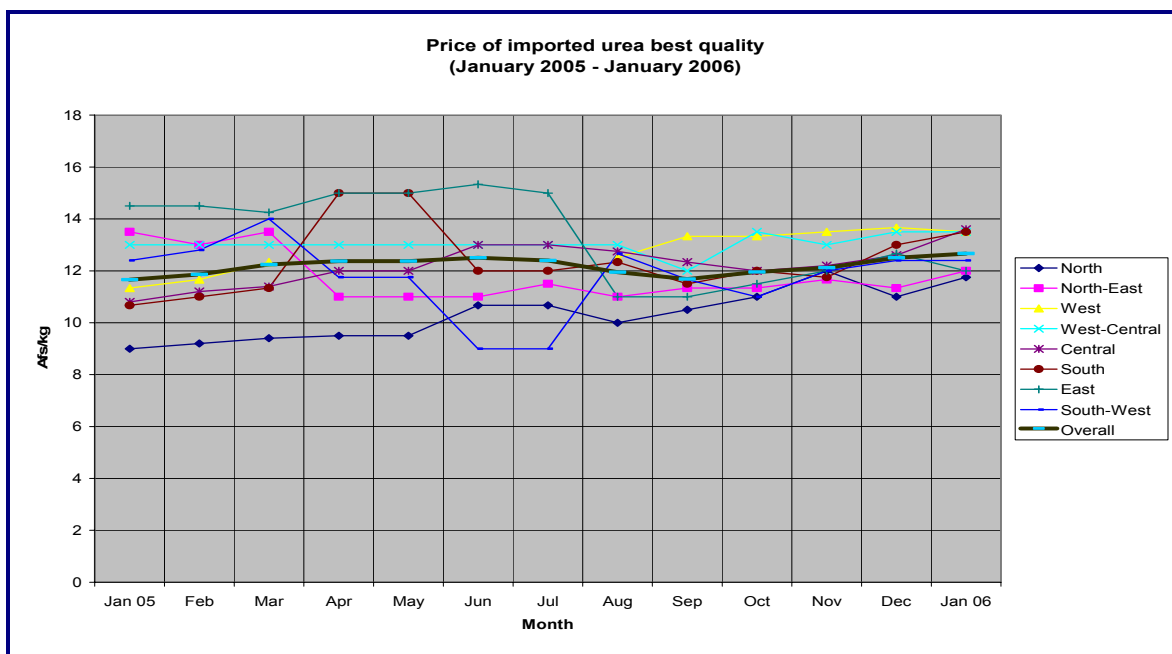
2.5. Fertilizer prices¹²

In the world market, urea is cheaper compared to the last two year. However, stronger demand in the recent months has increased its prices to some extent. In October 2005 DAP prices were about 5-12 percent higher than a year ago. DAP prices in the world market has remained generally stable during the last few months.

Table 2: Fertilizer spot prices (FOB US\$/tonne) in the world market¹³

Type	Location (Bulk fob)	Oct-05	Nov-05	Nov-04	% change
Urea	Persian Gulf	243 – 249	248 – 252	249 – 254	-2.2
DAP	US Gulf	266 – 267	265 – 266	235 – 237	12.9

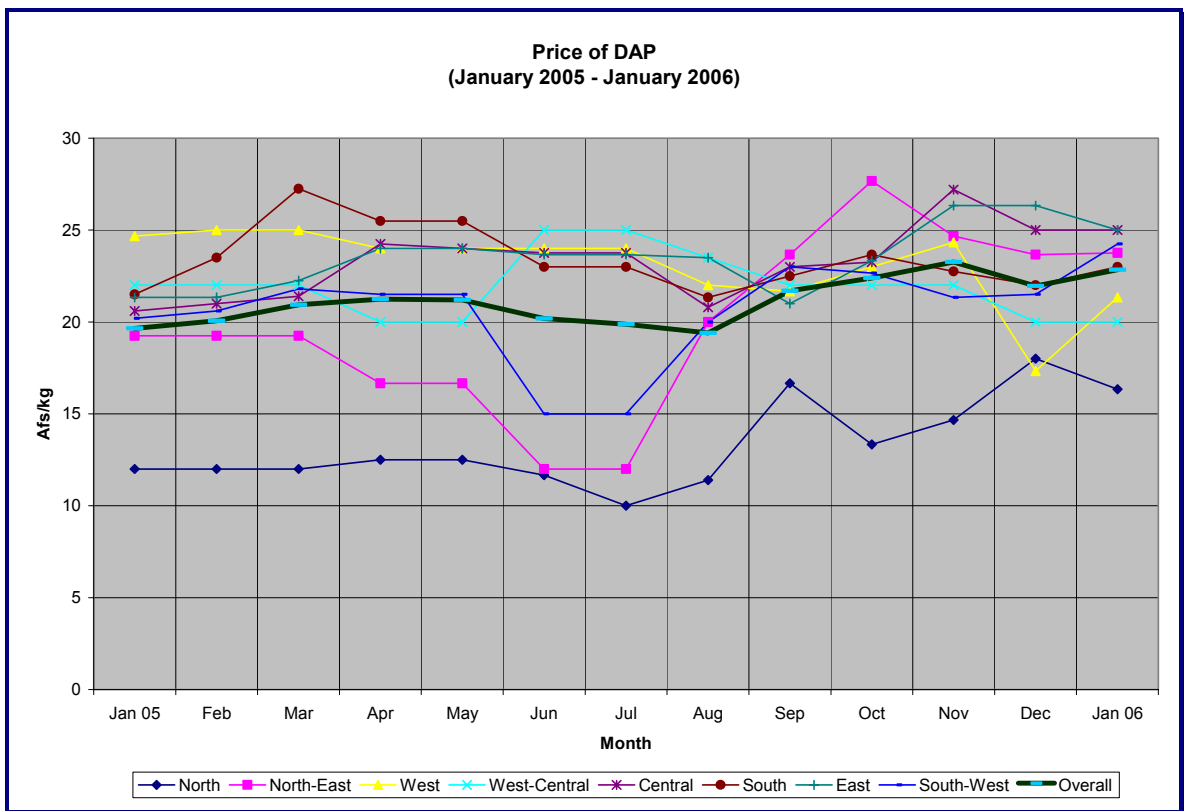
In Afghanistan the average price of best quality, imported urea was Afs 12.7/kg (US\$254/tonne) in January 2006. The price was stable after April in the West-Central region, north and north-east and east. The Central parts experienced slight rise in the price from May to July. From August the price shows a relatively consistent pattern across regions. (Annex III)



¹² The price of fertilizer per bag expressed in Afs/kg

¹³ Source: FAO

In January- August 2005, spatial variation in DAP prices was very large and the DAP price continued rising. For example, compared to August, the price of DAP was 20% higher in November. The price declined in November and December. In January 2006 the average price of the best quality DAP was Afs 23/kg, which is slightly costlier than in December 2005. (Annex III)



DAP is costly and its prices are highly variable in Afghanistan. The large variations in DAP prices across provinces can be attributed to: (i) the marked difference in the quality of DAP available in the markets and (ii) the transportation costs involved. DAP prices in north part of the country are more consistent with the international price.

**Annex I: National Consumer Price Index (CPI) January - December 2005
(March 2004 = 100)**

Item	Weights	Jan 05	Feb 05	Mar 05	Apr 05	May 05	Jun 05	Jul 05	Aug 05	Sep 05	Oct 05	Nov 05	Dec 05
OVERALL INDEX	100.0	109.3	110.4	111.6	111.9	113.1	113.9	114.3	114.8	116.3	117.6	119.2	120.7
Food Index	60.6	104.9	106.7	108.7	109.1	110.6	111.4	111.4	111.8	113.1	114.2	114.4	115.0
Bread and cereals	25.2	107.7	111.4	114.9	113.8	116.6	118.6	118.9	119.5	122.1	123.9	123.6	124.5
Meat	5.1	105.0	106.8	108.8	106.6	107.0	107.3	107.3	107.6	108.2	108.3	109.1	110.6
Milk, cheese and eggs	5.4	104.6	104.5	103.4	105.2	104.7	105.1	106.4	107.0	108.2	111.3	112.1	112.1
Oils and fats	5.9	95.3	96.0	95.4	95.4	94.8	93.8	94.3	94.6	95.2	96.1	94.9	94.4
Fresh and dried fruits	5.6	105.1	101.5	103.0	104.8	106.2	106.9	108.3	107.6	106.8	107.0	106.5	106.7
Vegetables including tubers	6.6	107.7	110.7	112.6	117.3	119.9	119.2	114.9	115.4	116.0	116.7	118.3	118.5
Sugar and sweets	1.8	104.7	106.1	108.5	110.6	111.6	112.0	113.1	115.0	115.8	114.7	116.5	116.5
Spices	1.2	100.2	99.9	104.5	105.2	105.9	105.6	106.6	105.5	106.4	105.6	110.0	110.9
Non-alcoholic beverages	2.0	99.8	99.6	100.2	101.3	101.6	102.4	102.4	102.5	101.8	100.8	101.0	102.4
Cigarrates and tobacco	1.8	94.7	95.9	96.7	98.6	98.6	98.6	98.2	98.9	96.9	96.4	96.8	98.0
Non-food Index	39.4	116.1	116.0	116.1	116.1	116.8	117.7	118.7	119.3	121.1	122.8	126.6	129.5
Exchange rate Index		98.4	99.7	98.9	98.6	100.1	100.5	100.5	99.2	99.2	98.5	98.2	100.2

Source: Central Statistics Office

**Annex II: Kabul Consumer Price Index for January- to December, 2005
(December 2002 = 100)**

Item	Weights	Jan 05	Feb 05	Mar 05	Apr 05	May 05	Jun 05	Jul 05	Aug 05	Sep 05	Oct 05	Nov 05	Dec 05
OVERALL INDEX	100.0	119.4	120.8	123.0	123.7	124.9	125.9	126.2	126.9	129.3	130.6	132.0	133.7
Food	60.6	114.4	116.8	120.3	121.1	122.3	122.8	122.5	122.7	124.1	125.4	125.9	126.3
Bread and cereals	25.2	123.8	129.5	134.8	134.6	136.4	137.2	136.3	136.4	139.4	141.9	142.9	143.2
Meat	5.1	135.2	135.6	137.7	143.5	145.6	146.4	145.3	145.6	145.4	146.3	146.0	146.8
Milk, cheese and eggs	5.4	120.2	121.0	120.4	120.4	119.5	119.2	119.0	120.3	121.7	122.6	122.4	123.2
Oils and fats	5.9	96.0	97.2	97.4	96.5	95.3	95.2	95.3	94.5	94.8	95.0	95.1	94.6
Fresh and dried fruits	5.6	107.1	104.8	109.0	110.6	112.6	113.9	114.4	114.2	114.7	116.8	117.0	117.5
Vegetables including tubers	6.6	87.2	87.8	93.2	95.4	97.4	96.0	96.3	96.4	96.3	95.6	95.4	96.3
Sugar and sweets	1.8	117.2	117.7	120.7	121.4	123.5	124.2	124.4	127.4	127.3	126.6	127.2	127.0
Spices	1.2	96.9	97.0	101.8	102.9	104.9	108.2	111.3	112.6	111.5	114.0	116.3	117.5
Non-alcoholic beverages	2.0	108.5	107.5	109.0	109.4	109.6	190.9	110.1	109.6	109.2	109.3	110.6	111.1
Cigarettes and tobacco	1.8	102.5	102.4	102.2	102.4	102.3	102.1	102.1	102.2	104.1	104.1	104.3	104.2
Non-food Index	39.4	127.0	127.0	127.0	127.8	129.0	130.8	132.1	133.4	137.2	138.7	141.4	145.0
Exchange rate Index		96.6	97.9	97.1	96.8	98.3	98.7	98.7	97.4	97.4	96.7	96.4	98.5

Source: Central Statistics Office

Annex III

Retail market price of various agricultural commodities in provincial centers in January 2006

(Source: FAAHM)

SN	Region	Province	Wheat Local (Afs/kg)	Wheat imported (Afs/kg)	Wheat Flour local (Afs/kg)	Wheat Flour imported (Afs/kg)	Rice local (Afs/kg)	Rice imported (Afs/kg)	Maize (Afs/kg)	Mungbeans (Afs/kg)	Pea (Afs/kg)	Potato (Afs/kg)	Vegetable oil (Afs/litre)	Milk (Afs/litre)
1	North	Faryab	13	11	15	16	30	40	10	14	28	12	50	20
2	North	Juzjan	11	10	12	14	33	36	11	30	40	15	41	20
3	North	Sar-i-Pul	10	11	13	13	22	35	9	22	25	12	70	10
4	North	Balkh	11		13	13	31	35	16	26	35	14	55	20
5	North	Samangan	10		12	14	23	33	10	25	30	13	45	15
6	North-East	Bughlan	10		12	15	26	34	7	20	35	15	40	20
7	North-East	Kunduz	12		14	15	22	36	17	20	32	14	44	16
8	North-East	Takhar	8		12		22	31	12	22	28	11		25
9	North-East	Badakhshan	14	17	16	24	28	36		35	43	15	55	24
10	West	Heart	10		15	15	30	35	17	35	40	12	60	20
11	West	Farah	11	14		15	20	35	9	20	45	10	50	20
12	West	Badghis	12	14	14	15		37	10	40	15	14	50	30
13	West-Central	Ghor	13		14	16		40		35	30	12	50	
14	West-Central	Bamyan	11	12	15	16		35		27	35	11	40	
15	Central	Kabul	13		15	17	26	36	12	30	38	16		22
16	Central	Parwan	11	10	12	15	24	36	8	30	40	11	40	14
17	Central	Kapisa	12	12	14	15	19	36	8	30	43	13	46	
18	Central	Logar	14	13	14	15		36	9	30	35	11	40	15
19	Central	Wardak	13	13	14	16	23	35	11	30	45	9	40	17
20	South	Paktya												
21	South	Paktika												
22	South	Khost	11			13	15		7	28	25	15	50	34
23	South	Ghazni	15	13		15		34	10	30	35	10	50	20
24	East	Nangarhar	11			13	23	30	7	27	31	13	40	20
25	East	Laghman	13		14	17	22	33	10	23	38	13	40	16
26	East	Kunarha	11	12	15	17	16	34	7	23	55	17	50	34
27	East	Nooristan												
28	South-West	Kandahar	11			14		34	9	27	49	14	43	23
29	South-West	Helmand	11		12	14		32	7	23	45	12	40	18
30	South-West	Zabul	11		14	15		35	11	28	31	10	42	16
31	South-West	Nimroz	10			15		35	10	39	39	12	44	
32	South-West	Uruzgan	10		12	15	19	41	7	23	33	11	48	10

Annex III

Retail market price of various agricultural commodities in provincial centers in January 2006

(Source: FAAHM)

SN	Region	Province	Beef (Afs/kg)	Mutton (Afs/kg)	Chicken (Afs/kg)	Male Sheep live, one year (Afs/head)	Female Sheep live, one year (Afs/head)	Male Goat live, one year (Afs/head)	Female Goat live, one year (Afs/head)	Wheat seed best quality (Afs/kg)	Local Urea best quality (Afs/kg)	Imported Urea best quality (Afs/kg)
1	North	Faryab	140	180	60	5,000	3,500	3,000	2,500	13	14	14
2	North	Juzjan	140	160	65	4,500	5,000	3,000	3,500	12		
3	North	Sar-i-Pul	130	150	80	6,000	5,500	4,000	3,500	15	10	10
4	North	Balkh	150	180	90	5,000	4,500	2,500	2,700	14	13	12
5	North	Samangan	130	150	60	5,000	5,500	3,000	3,200	10	11	11
6	North-East	Bughlan	130	160	90	4,500	4,000	3,500	3,200	11	10	10
7	North-East	Kunduz	150	180	70	6,000	4,000	2,500	2,700	13	13	13
8	North-East	Takhar	110	150	60	5,000	4,500	4,000	3,500	12	13	12
9	North-East	Badakhshan	130	180	75	6,000	5,500	3,500	3,000			13
10	West	Heart	140	220	60	5,000	4,000	3,000	3,000	20	11	
11	West	Farah	130	180	80	7,000	5,000	3,000	2,500	12	16	16
12	West	Badghis	125	150	65	7,000	5,000	3,500	4,000	14		11
13	West-Central	Ghor	130	150	100	5,000	5,000	4,500	3,000	13		14
14	West-Central	Bamyan	120	160	100	7,000	4,500	4,000	3,500	14	14	13
15	Central	Kabul	160	200	80	7,000	5,500	5,000	3,500	18		14
16	Central	Parwan	130	180	70	8,000	6,000	4,000	3,500	14	12	13
17	Central	Kapisa	140	180	65	5,000	3,000	3,500	2,500	15	13	14
18	Central	Logar	120	200	90	8,000	5,000	3,500	3,000	14		15
19	Central	Wardak	130	170	70	8,500	6,000	2,500	2,000	15	11	12
20	South	Paktya										
21	South	Paktika										
22	South	Khost	105	150	85	5,500	4,300	5,200	4,300	12		14
23	South	Ghazni	130	180	95	8,000	7,500	4,500	3,500	16	12	13
24	East	Nangarhar	120	175	80	6,000	4,000	4,500	3,000	15		12
25	East	Laghman	130	180	100	8,000	4,000	4,000	3,000	18		12
26	East	Kunarha	130	160	100	4,500	5,000	3,000	2,500			12
27	East	Nooristan										
28	South-West	Kandahar	125	205	60	6,000	5,000	4,000	3,500	14		12
29	South-West	Helmand	120	180	75	8,000	6,000	6,000	5,000	12		12
30	South-West	Zabul	130	180	80	6,500	6,000	4,500	4,300	12		13
31	South-West	Nimroz	140	170	75	5,000	4,000	4,500	3,500			11
32	South-West	Uruzgan	120	185	90	10,000	5,000	4,000	3,500	11		14

Annex III

Retail market price of various agricultural commodities in provincial centers in January 2006

(Source: FAAHM)

SN	Region	Province	DAP best quality (Afs/kg)	Agriculture labour (Afs/day)	Pair of oxen hiring (Afs/day)	Water pump charge (Afs/hour)	Tractor hiring charge (Afs/hour)	Diesel (Afs/Litre)	Liquid Gas (Afs/kg)	Kerosene (Afs/litre)	Petrol (Afs/litre)	Raw Opium (Afs/kg)	Dry Opium (Afs/kg)
1	North	Faryab	14	250	600		600	38	55	38	35		
2	North	Juzjan		160	600	300	750	37	52	35	36	4,000	6,000
3	North	Sar-i-Pul		200	700		200	35	55	30	32		
4	North	Balkh	16	200	650	250	600	36	50	40	34	4,000	6,000
5	North	Samangan	19	200	600		700	35	50	36	30	4,700	5,700
6	North-East	Bughlan	22	130	650	270	500		33		33		
7	North-East	Kunduz	23	190	600		700	38	55	44	37		
8	North-East	Takhar	24	120	300		800	35	50	40	40		
9	North-East	Badakhshan	26	220	450			48	75		50		6,000
10	West	Heart	13	180	500	120	500	34	40	31	30		
11	West	Farah	26	200	450	100	450	35	45	35	35		
12	West	Badghis	25	150	250		500	33	45	55	33		
13	West-Central	Ghor	20	200	500	250	700	45	53	48	40	7,000	
14	West-Central	Bamyan		150				39	50		40		
15	Central	Kabul	24	200	600			38	50	40	35		
16	Central	Parwan	28	180	500	300	400	36	50	40	32		
17	Central	Kapisa	26	200	500	400	500	38	50	45	38		
18	Central	Logar	23	200	600			36	50	35	34		
19	Central	Wardak	24	200	450	500	500	33	55	37	34		
20	South	Paktya											
21	South	Paktika											
22	South	Khost	23	200		300	400	33	49	47	38		
23	South	Ghazni	23	200	600	150	450	33	50	38	33		
24	East	Nangarhar	22	170	450	155	390	34	55	38	34		
25	East	Laghman	28	200	500		400	38	60	35	38		
26	East	Kunarha	25	220	200		420	42	60	45	40		12,000
27	East	Nooristan											
28	South-West	Kandahar	24	250		400	500	38	48	40	33		6,690
29	South-West	Helmand	24	200		100	800	33	45	36	35	8,000	13,500
30	South-West	Zabul	24	200	600	250	400	36	50	38	37		
31	South-West	Nimroz		280			500	30	40	30	27	7,800	10,500
32	South-West	Uruzgan	25	200	500	150	400	46	65	45	46		

Annex IV

Weekly Market price of agricultural commodities/services
[Source: Vulnerability Mapping Unit (VAM), WFP Afghanistan]

Location	Commodity/Service	November, 05				December, 05				January, 06			
		Week 1	Week 2	Week 3	Week 4	Week 1	Week 2	Week 3	Week 4	Week 1	Week 2	Week 3	Week 4
Kabul	Wheat (kg)	12.7	12.7	12.7	12.7	11.0	12.7	13.0	12.7	12.7	12.8	12.8	12.9
Kandahar	Wheat (kg)	10.6	10.6	10.6	11.0	11.0	11.0	11.8	11.8	11.8	11.8	11.8	11.8
Jalalabad	Wheat (kg)	10.0	10.0	10.0	10.2	10.2	10.0	10.0	10.0	10.0	10.3	10.7	10.3
Heart	Wheat (kg)	11.0	11.0	11.0	11.0	11.1	11.1	10.5	10.5	10.5	10.5	10.5	10.6
Mazar	Wheat (kg)	10.0	10.0	10.5	10.0	10.0	10.2	10.2	10.2	10.0	10.0	10.0	10.5
Faizabad	Wheat (kg)	12.0	12.9	12.9	11.0	11.0	13.5	12.9	13.6	13.5	14.0	13.0	14.0
Bamyan	Wheat (kg)	12.0	11.0	10.5	12.3	11.0	11.0	10.5	11.0	11.0	11.0	11.0	11.0
Maimana	Wheat (kg)	10.7	10.7	10.7	11.0	11.0	11.7	11.5	12.0	11.7	11.5	11.5	11.5
Kabul	Wheat flour (kg)	13.5	13.6	13.6	14.0	17.0	13.6	14.5	13.6	13.6	13.7	13.7	13.9
Kandahar	Wheat flour (kg)	12.5	12.5	12.5	13.6	13.6	13.1	13.5	13.5	13.7	13.7	13.7	13.6
Jalalabad	Wheat flour (kg)	13.7	13.3	13.3	13.3	13.3	13.3	13.3	13.3	13.3	13.3	13.7	13.7
Heart	Wheat flour (kg)	14.4	14.5	14.4	14.5	14.5	14.9	14.3	14.3	14.5	14.2	14.2	14.1
Mazar	Wheat flour (kg)	12.0	12.0	12.5	12.0	12.0	12.5	12.5	12.5	12.5	12.5	12.5	12.8
Faizabad	Wheat flour (kg)	15.0	15.7	17.1	15.0	15.0	17.0	17.1	17.9	18.0	18.0	16.0	17.0
Bamyan	Wheat flour (kg)	14.5	15.0	13.0	14.4	14.0	14.0	13.0	12.8	13.0	12.8	12.8	12.7
Maimana	Wheat flour (kg)	13.9	13.5	13.9	14.0	13.5	13.9	13.5	14.4	13.6	15.0	15.0	15.7
Kabul	Bread (kg)	18.0	18.0	18.0	18.0	20.0	18.0	18.0	18.0	18.0	18.0	18.0	20.0
Kandahar	Bread (kg)	20.0	20.0	20.0	20.0	20.0	20.0	20.0	20.0	20.0	20.0	20.0	20.0
Jalalabad	Bread (kg)	17.6	17.6	17.6	17.6	17.6	17.6	17.6	17.6	17.6	17.6	17.6	17.6
Heart	Bread (kg)	20.0	20.0	20.0	20.0	20.0	20.0	20.0	20.0	20.0	20.0	20.0	20.0
Mazar	Bread (kg)	20.0	20.0	25.0	25.0	20.0	20.0	20.0	20.0	20.0	20.0	20.0	20.0
Faizabad	Bread (kg)	33.3	33.3	33.3	33.3	33.3	33.3	33.3	33.3	33.3	33.3	33.3	33.3
Bamyan	Bread (kg)	30.0	30.0	22.0	30.0	30.0	30.0	30.0	30.0	30.0	18.2	18.2	18.2
Maimana	Bread (kg)	25.0	25.0	25.0	25.0	25.0	25.0	25.0	25.0	20.0	25.0	25.0	25.0

Annex IV

Weekly Market price of agricultural commodities/services
[Source: Vulnerability Mapping Unit (VAM), WFP Afghanistan]

Location	Commodity/Service	November, 05				December, 05				January, 06			
		Week 1	Week 2	Week 3	Week 4	Week 1	Week 2	Week 3	Week 4	Week 1	Week 2	Week 3	Week 4
Kabul	Diesel/litre	34.0	35.0	35.0	35.0	36.0	35.0	38.0	37.0	37.5	38.0	38.0	38.0
Kandahar	Diesel/litre	32.0	33.0	33.0	32.0	34.0	34.0	36.0	34.5	33.5	33.5	32.0	32.0
Jalalabad	Diesel/litre	32.3	32.3	35.3	35.3	37.2	37.2	37.2	37.3	35.7	36.0	35.6	28.6
Heart	Diesel/litre	29.0	30.0	30.0	31.0	30.0	32.0	33.0	33.0	33.0	32.0	32.0	31.0
Mazar	Diesel/litre	32.0	32.8	35.0	36.0	36.0	36.0	36.0	36.0	36.0	37.0	36.0	37.0
Faizabad	Diesel/litre	37.0	38.0	38.0	38.0	45.0	45.0	50.0	50.0	44.0	40.0	38.0	43.0
Bamyan	Diesel/litre	35.5	37.0	37.0	36.2	28.0	37.0	40.0	40.0	40.0	39.0	39.0	37.0
Maimana	Diesel/litre	32.0	34.0	34.0	35.0	38.0	38.0	37.0	34.0	37.0	37.0	37.0	40.0
Kabul	One-year female sheep, live	4,900	4,900	4,900	4,950	5,000	4,950	5,000	4,950	5,300	5,100	5,000	5,000
Kandahar	One-year female sheep, live	4,000	4,000	4,000	4,000	4,000	4,000	4,000	4,000	4,500	4,500	4,500	4,500
Jalalabad	One-year female sheep, live	3,800	3,800	3,800	3,800	3,766	3,766	3,766	3,766	3,766	3,700	3,633	3,666
Heart	One-year female sheep, live	3,550	3,600	3,500	3,600	3,550	3,600	3,500	3,500	3,600	3,600	3,600	3,500
Mazar	One-year female sheep, live	3,500	3,500	3,550	3,500	3,750	3,800	3,850	3,850	4,500	3,900	3,800	3,800
Faizabad	One-year female sheep, live	4,800	4,800	4,800	4,800	4,800	4,800	4,800	4,800	4,800	4,000	4,000	4,500
Bamyan	One-year female sheep, live	3,713	3,713	3,713	3,713	3,713	3,713	3,713	3,713	3,713	3,713	3,713	3,500
Maimana	One-year female sheep, live	3,500	3,600	3,600	3,500	3,500	4,250	4,200	4,400	4,200	4,250	4,250	4,750
Kabul	Casual labour/day	180.0	180.0	180.0	180.0	200.0	180.0	180.0	180.0	180.00	180.00	180.00	180.00
Kandahar	Casual labour/day	150.0	150.0	150.0	150.0	150.0	150.0	150.0	150.0	150.00	150.00	150.00	170.00
Jalalabad	Casual labour/day	126.7	126.7	126.7	126.7	126.7	126.7	126.7	126.7	126.66	126.66	126.66	126.66
Heart	Casual labour/day	170.0	170.0	170.0	170.0	170.0	170.0	170.0	170.0	160.00	160.00	160.00	150.00
Mazar	Casual labour/day	150.0	140.0	130.0	130.0	130.0	140.0	140.0	140.0	130.00	130.00	120.00	120.00
Faizabad	Casual labour/day	250.0	250.0	250.0	250.0	250.0	250.0	250.0	250.0	250.00	200.00	200.00	250.00
Bamyan	Casual labour/day	180.0	200.0	200.0	188.0	200.0	200.0	200.0	200.0	200.00	200.00	200.00	200.00
Maimana	Casual labour/day	220.0	180.0	200.0	200.0	200.0	200.0	200.0	200.0	200.00	250.00	250.00	250.00