

BATOID FISHES

PRISTIDAE

Pristis pristis (Linnaeus, 1758)

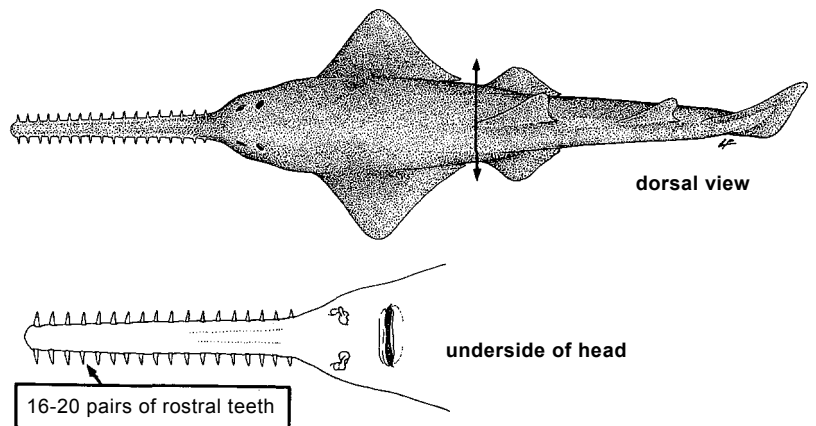
FAO names : **En** - Common sawfish; **Fr** - Poisson-scie commun; **Sp** - Pez sierra común.

Size : 500 cm (total length).

Fishing gear : bottom trawls, longlines, trammelnet, drift gillnets.

Habitat : demersal in littoral and coastal waters to 60 m depth.

Loc.name(s) :



RAJIDAE

Raja alba Lacepède, 1803

Synonyms : *Raja marginata* Lacepède, 1803; *Raja bicolor* Risso, 1826. '

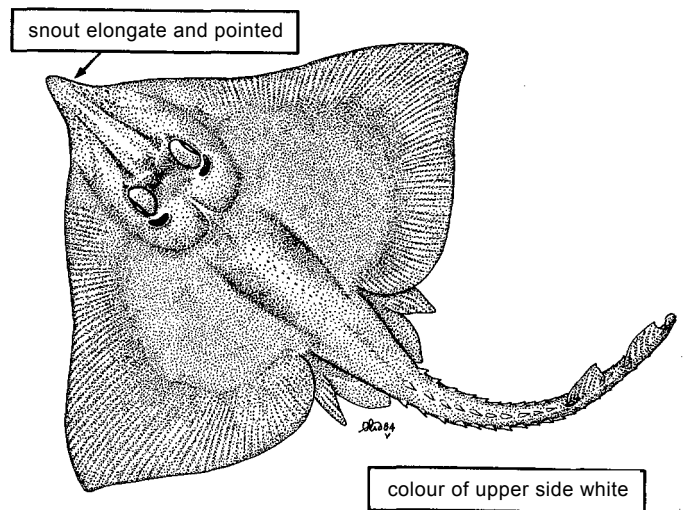
FAO names : **En** - White skate; **Fr** - Raie blanche; **Sp** - Raya bramante.

Size : 200 cm (total length).

Fishing gear : bottom trawls, longlines, trammelnets.

Habitat : on different types of bottoms, from 40 to 400 m depth.

Loc.name(s) :

***Raja clavata*** Linnaeus, 1758

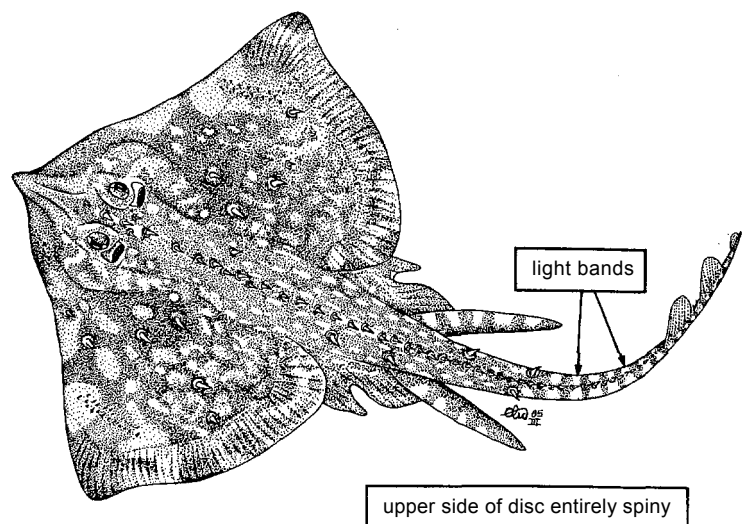
FAO names : **En** - Thornback ray; **Fr** - Raie bouclée; **Sp** - Raya de clavos.

Size : 90 cm (total length).

Fishing gear : bottom trawls, longlines, trammelnets.

Habitat : from shallow coastal waters to 300 m depth.

Loc.name(s) :



BATOID FISHES

RAJIDAE

Raja doutrei Cadenat, 1960

FAO names : En - Violet skate; Fr - Raie violette;
Sp - Raya violeta.

Size : 90 cm (total length), common to 60 cm.

Fishing gear : bottom trawls.

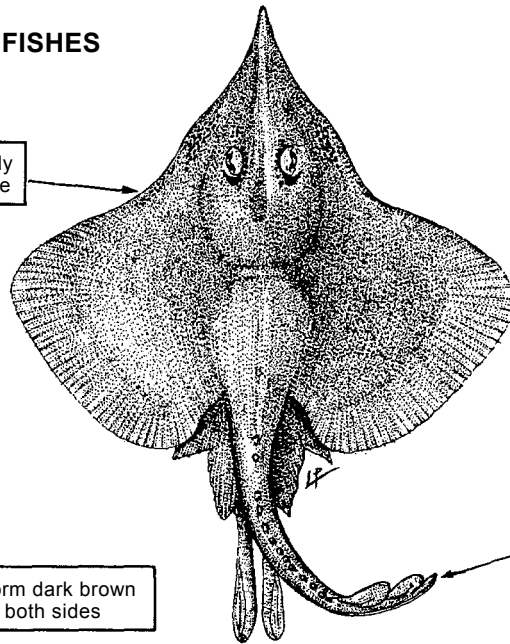
Habitat : Rather deep waters, from 300 to 600 m.

Loc.name(s) :

distinctly
concave

colour uniform dark brown
violet on both sides

tail
shorter
than disc



Raja leopardus v. Bonde & Swart, 1923

FAO names : En - Leopard ray; Fr - Raie léopard;
Sp - Raya leopardo.

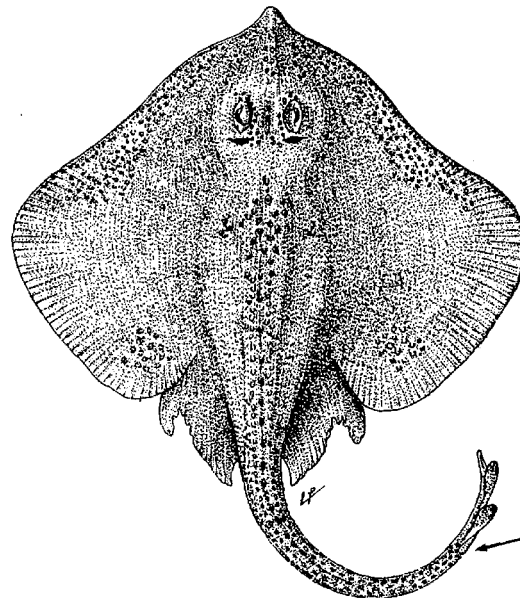
Size : 60 cm (total length).

Fishing gear : bottom trawls.

Habitat : deep waters, from 150 to 300 m.

Loc.name(s) :

tail scarcely
longer than disc



Raja maderensis Lowe, 1839

FAO names : En - Madeiran ray; Fr - Raie de
Madeire; Sp - Raya de Madeira.

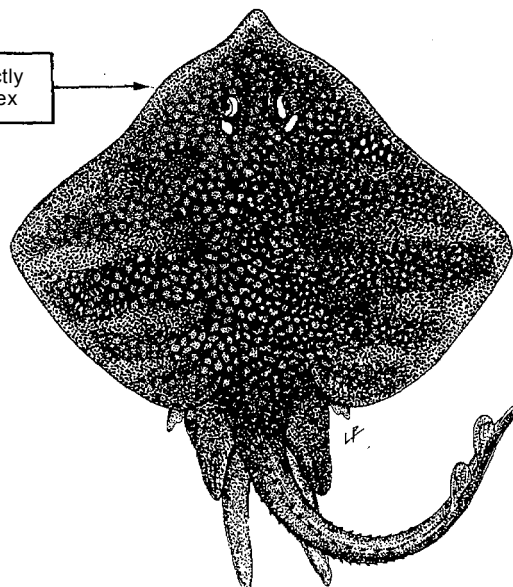
Size : 85 cm (total length), common to 50 cm.

Fishing gear : bottom trawls.

Habitat : deep waters, from 200 to 500 m.

Loc.name(s) :

distinctly
convex



BATOID FISHES

Raja miraletus Linnaeus, 1758

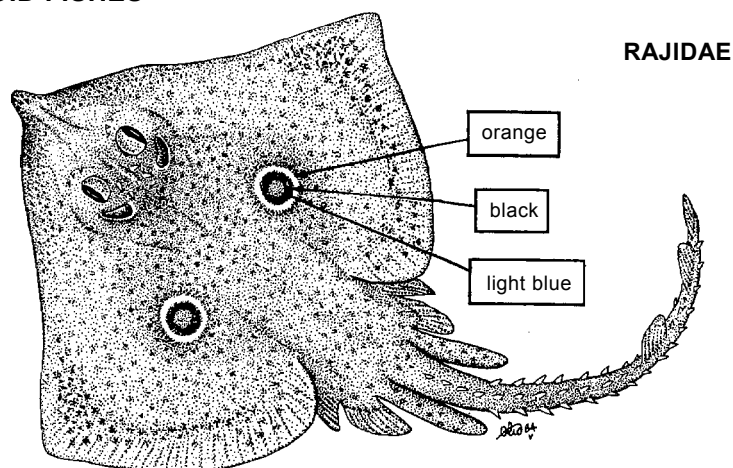
FAO names : En - Brown ray; Fr - Raie miroir; Sp - Raya de espejos .

Size : 60 cm (total length), common to 35 cm.

Fishing gear : bottom trawls, longlines, trammelnets.

Habitat : demersal, from 50 to 300 m depth, more common between 50 and 150 m depth.

Loc.name(s) :



RAJIDAE

Raja radula Delaroche, 1809

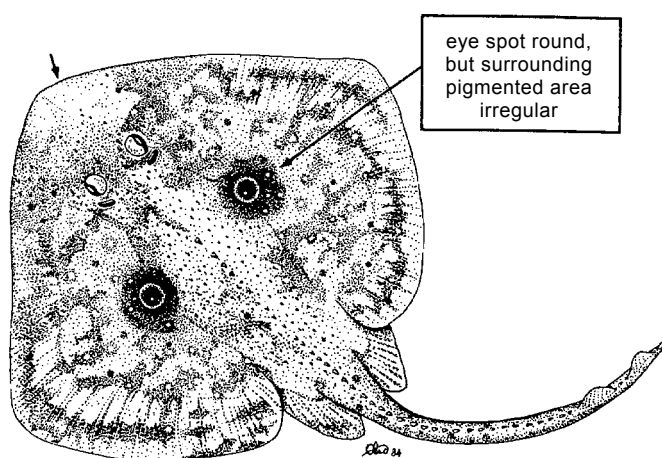
FAO names : En - Rough ray; Fr - Raie-rape; Sp - Raya áspera.

Size : 70 cm (total length), common to 50 cm.

Fishing gear : bottom trawls, trammelnets, beach seines.

Habitat : demersal, from 40 to 350 m depth.

Loc.name(s) :



upper side of disc almost entirely spiny

Raja straeleni Poll, 1951

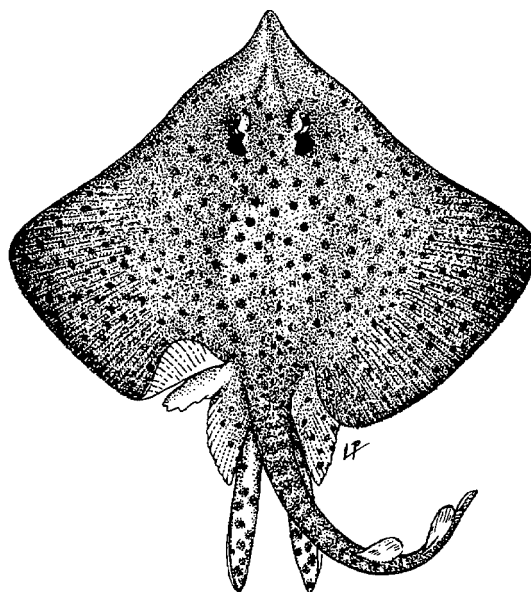
FAO names : En - Spotted skate; Fr - Raie tachetée; Sp - Raya manchada.

Size : 70 cm (total length), common to 40 cm.

Fishing gear : bottom trawls.

Habitat : deep waters, from 100 to 300 m depth.

Loc.name(s) :



colour: upper side dark, sometimes with darker spots, underside lighter

BATOID FISHES

RAJIDAE

Raja undulata Lacepède, 1802

Synonyms : ? *Raja picta* Lacepède, 1800

FAO names : **En** - Undulate ray; **Fr** - Raie brunette; **Sp** - Raya mosaico.

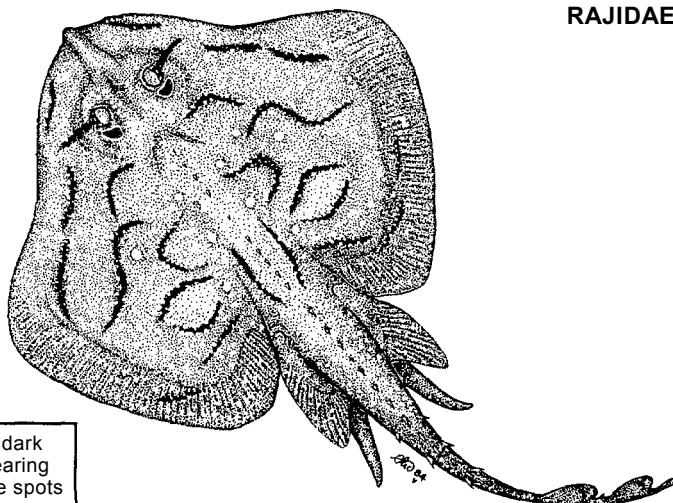
Size : 100 cm (total length), common to 60 cm.

Fishing gear : bottom trawls, bottom set longlines.

Habitat : demersal, on sandy bottoms, to 300 m depth.

Loc.name(s) :

sinuous dark bands bearing small white spots



RHINOBATIDAE

Rhinobatos albomaculatus Norman, 1930

FAO names : **En** - Whitespotted guitarfish; **Fr** - Poisson-guitare à lunaires; **Sp** - Guitarra pecosa.

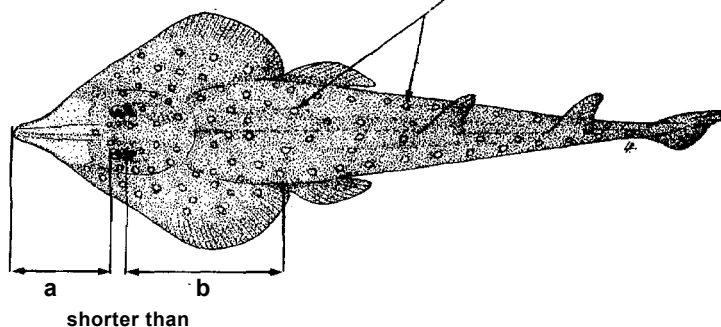
Size : 80 cm, common to 60 cm.

Fishing gear : bottom trawls, trammelnets, hook-and-line.

Habitat : shallow coastal waters to about 35 m depth; demersal.

Loc.name(s) :

upper side brown, with small light spots circled with black



shorter than

Rhinobatos cemiculus E. Geoffroy St. Hilaire, 1817

Synonyms : *Rhinobatos congolensis* Giltay, 1928; *Rhinobatos rarus* Garman, 1908.

FAO names : **En** - Blackchin guitarfish; **Fr** - Poisson-guitare fouisseur; **Sp** - Guitarra barbanegra.

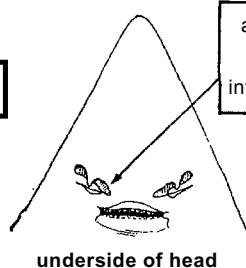
Size : 200 cm, common to 120 cm.

Fishing gear : bottom trawl, trammelnets, longlines.

Habitat : shallow coastal waters; demersal, rather inactive.

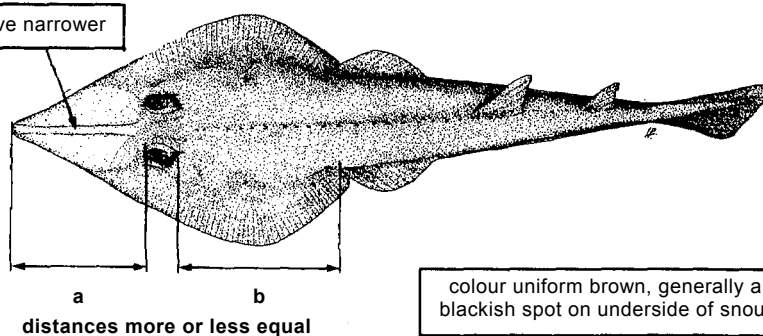
Loc.name(s) :

anterior nasal valves not extending to internasal space



underside of head

groove narrower

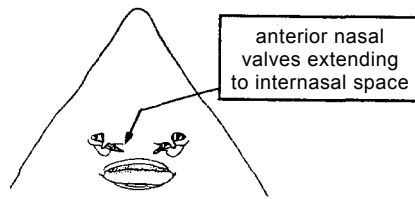


distances more or less equal

colour uniform brown, generally a blackish spot on underside of snout

BATOID FISHES

RHINOBATIDAE



underside of head

Rhinobatos rhinobatos (Linnaeus, 1758)

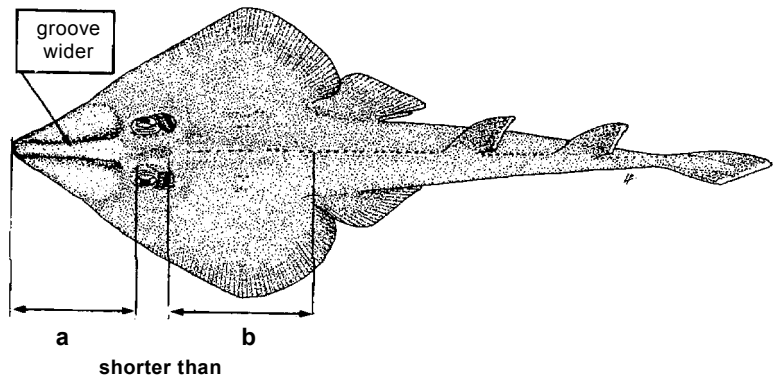
FAO names : **En** - Common guitarfish; **Fr** - Poisson-guitare commun ; **Sp** - Guitarra común.

Size : 100 cm, common to 80 cm.

Fishing gear : bottom trawls, trammelnets, longlines.

Habitat : shallow coastal waters, to 90 m depth.

Loc.name(s) :



RHINOPTERIDAE

Rhinoptera marginata (E. Geoffroy Saint-Hilaire, 1817)

Synonyms : ? *Rhinoptera peli* Bleeker, 1863.

FAO names : **En** - Lusitanian cownose ray; **Fr** - Mourine lusitanienne; **Sp** - Gavilán lusitanico.

Size : 200 cm (disc width).

Fishing gear : bottom trawls, trammelnets, longlines, hook-and-line.

Habitat : demersal, on soft bottoms in shallow coastal waters, forming schools.

Loc.name(s) :

