

Parribacus japonicus Holthuis, 1960

Fig. 407

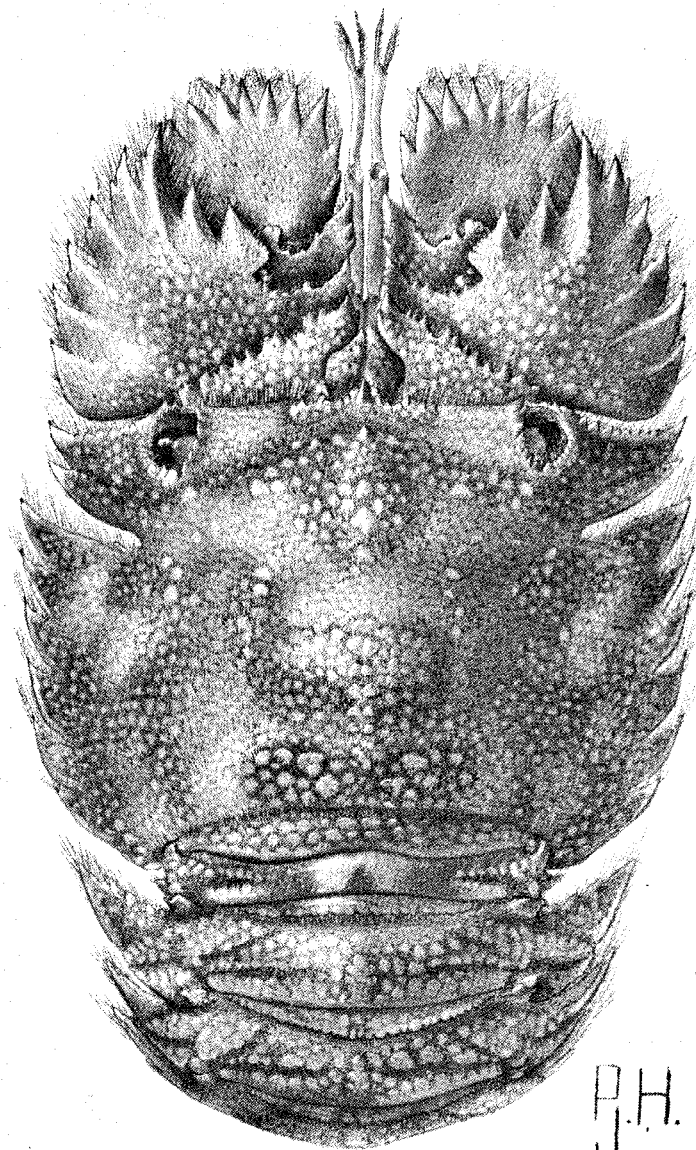
Parribacus japonicus Holthuis, 1960, Proceedings Biological Society Washinoton, 73: 148.

Synonyms: Formerly often confused with *P. antarcticus*.

FAO Names : En - Japanese mitten lobster

Type : Type locality: "Ku'ruri District, Tokyo Bay", Honshu, Japan. Holotype male in USNM, no. 18883. Paratypes in RMNH, USNM.

Geographical Distribution : Japan (north-west coast, west of Maizuru, 135°15'E; Pacific coast from Tokyo Bay, 140°E, south-westward to Ryukyu Islands) (Fig. 408).



(from Holthuis, 1985)

Fig. 407

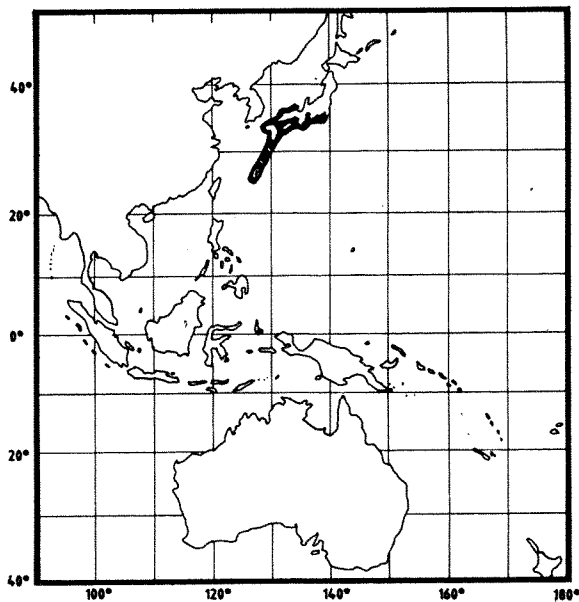


Fig. 408

Habitat and Biology : In shallow waters up to 20 m depth; the animals live on shore reefs

Size : Carapace lengths from 4 to 7.4 cm; maximum total body length about 16 cm.

Interest to Fisheries : Minor. The species is caught in gill nets and is sold fresh. Very little information is available.

Local Names : JAPAN: Zori ebi.

Literature : Holthuis, 1985: 106-111, fig. 27

Parribacus perlatus Holthuis, 1967

Fig. 409

SCYL Par 5

Parribacus perlatus Holthuis, 1967, *Proceedings Koninklijke Nederlandse Akademie Wetenschappen*, (C)70:305.

FAO Names : **En** - Easter Island mitten lobster.

Type : Type locality: "Easter Island" Holotype female in RMNH, no. D 21257, in alcohol, condition excellent.

Geographical Distribution : So far only known from Easter Island, Pacific Ocean (Fig. 410).

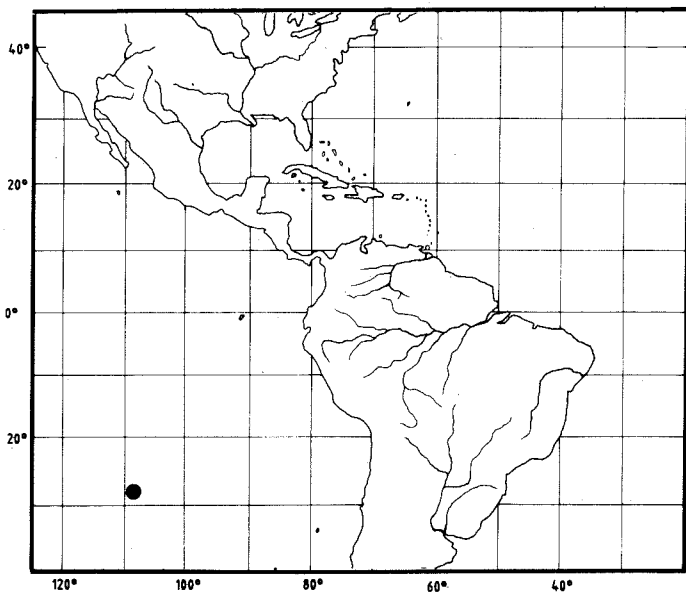
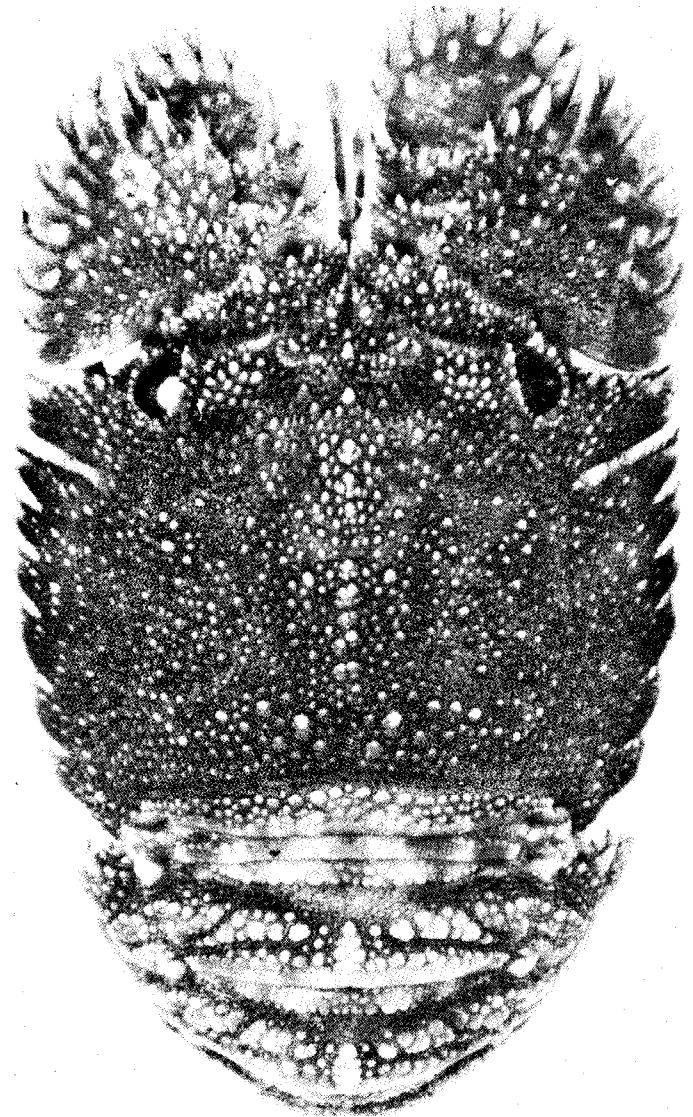


Fig. 410



(from Holthuis, 1985)

Fig. 409

Habitat and Biology : In shallow water among the rocks, the animals hide in the daytime in marine caves and crevices.

Size : Carapace length 4 to 5 cm. Maximum total body length about 11 cm.

Interest to Fisheries : The species is fished by the population of Easter Island by wading in the water both at night and in the daytime. The lobsters are stepped upon and then picked up by hand; divers enter the caves and crevices and pick them up there. At night the fishery takes place with torches.

Local Names : CHILE: Raperape, Ura, Ura raperape, Crayfish, Langosta, Easter Island lobster (Easter Island).

Literature : Holthuis, 1972:44, pl. 1; Holthuis, 1985:93-98, fig 23.

Parribacus scarlatinus Holthuis, 1960

Parribacus scarlatinus Holthuis, 1960, *Proceedings Biological Society Washington*, 73: 148.

FAO Names : En - Marbled mitten lobster

Type : Type locality: "Enderbury Island, Phoenix Archipelago, 3°08'29.7"S, 171°05'34.4"W". Holotype male in USNM. no. 100826.

Geographical Distribution : Central Pacific Ocean from Kapingamarangi through the Marshall, Gilbert and Phoenix Islands to the Marquesas (Fig 412).

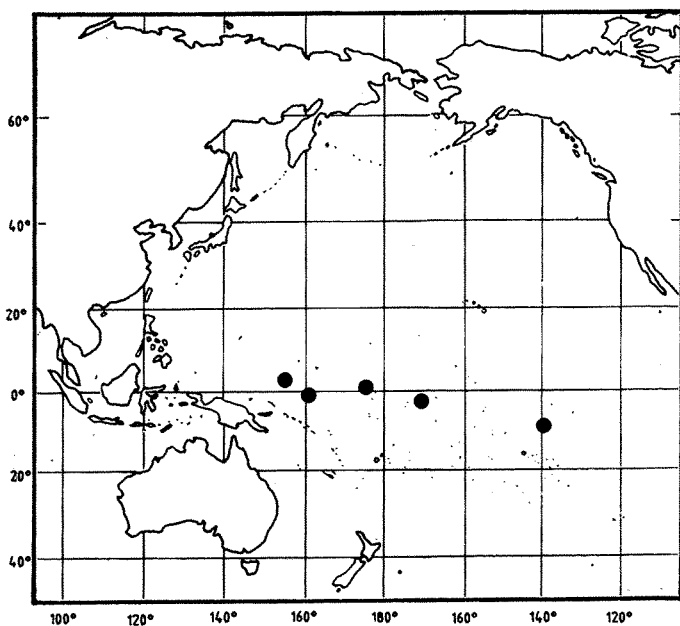
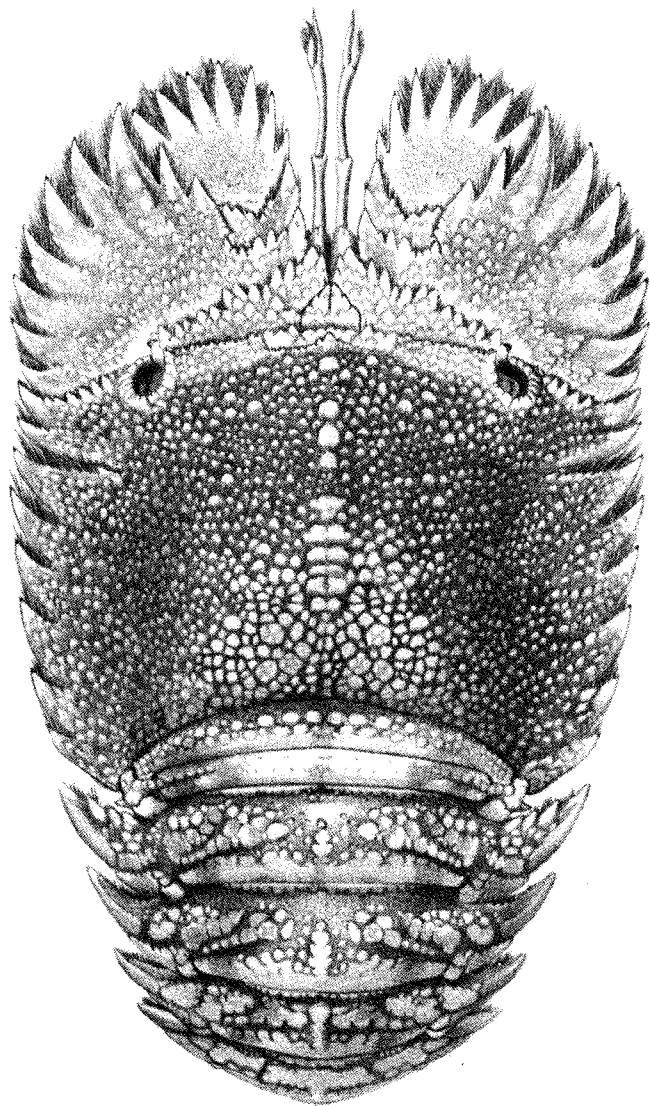


Fig. 412

Fig. 411

SCYL Par 6



(from Holthuis, 1985)

Fig. 411

Habitat and Biology : In shallow waters, in or near reefs.

Size : Known carapace lengths vary between 2.5 and 7 cm Maximum total body length about 15 cm.

Interest to Fisheries : No information available, but judging by the fact that all other species of the genus are used as food, the same is expected for the present one.

Literature : Holthuis, 1985: 102-106, fig. 26.