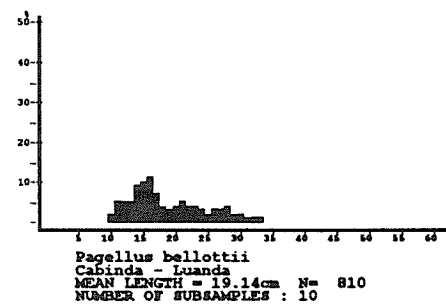
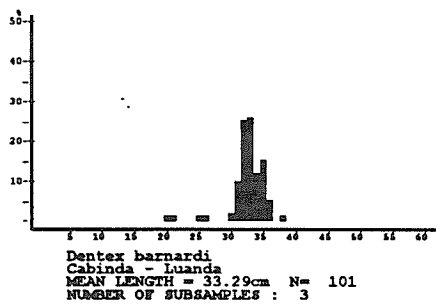
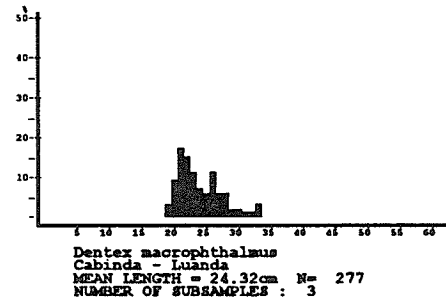
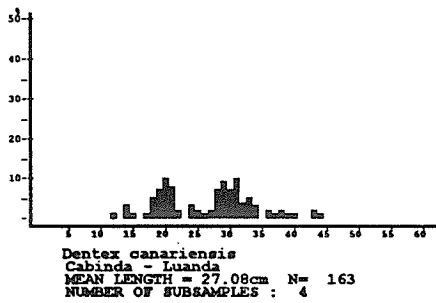
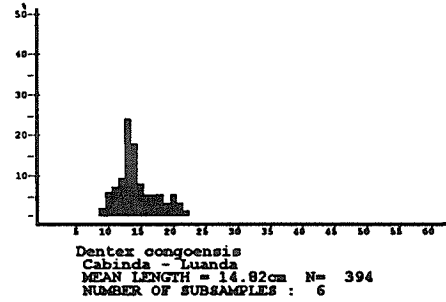
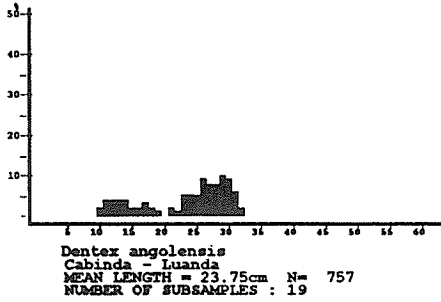
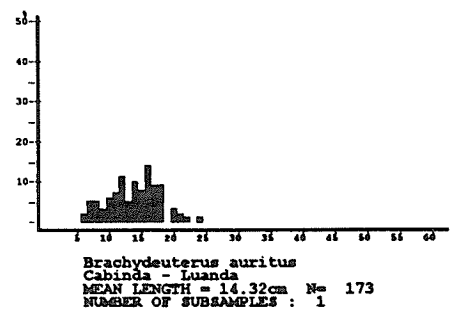
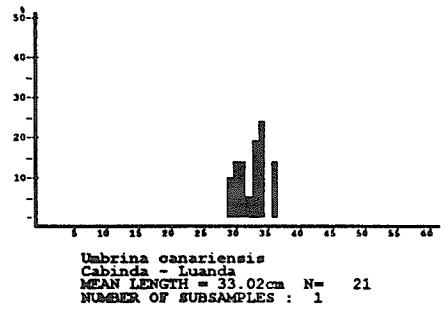
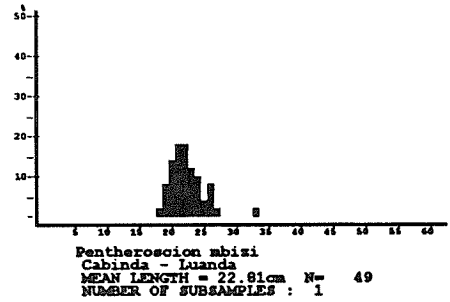
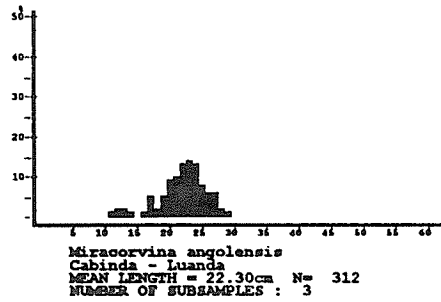
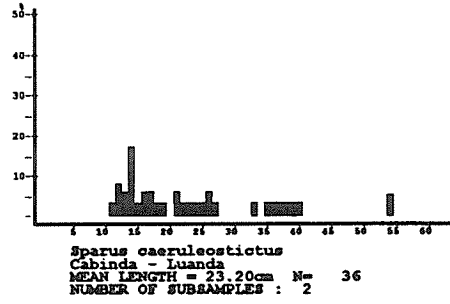
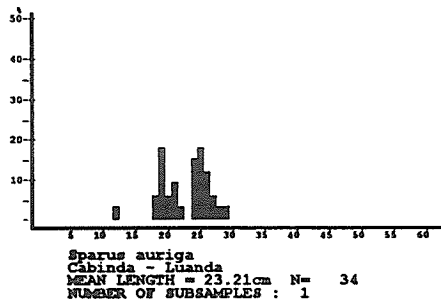
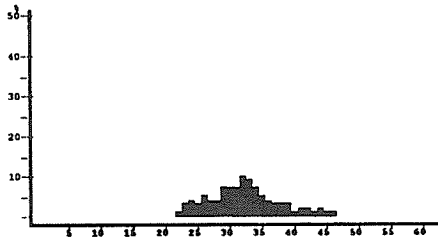


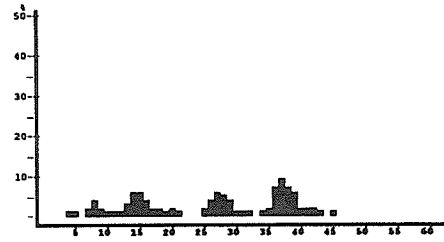
Annex II. Length distributions of main species



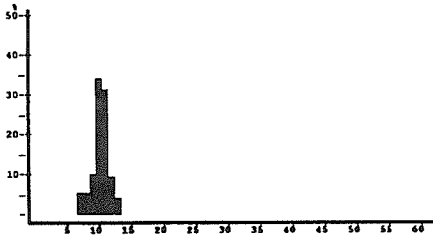




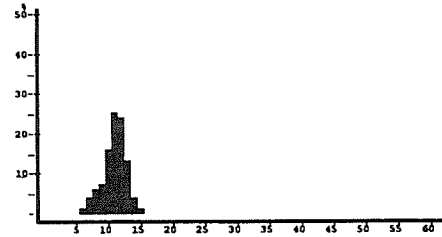
Merluccius polli
Cabinda - Luanda
MEAN LENGTH = 32.48cm N= 864
NUMBER OF SUBSAMPLES : 19



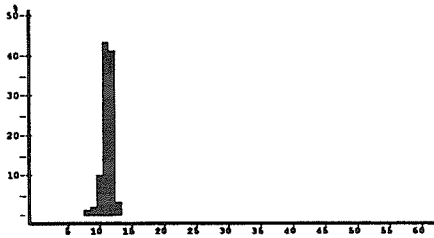
Trachurus trecae
Cabinda - Luanda
MEAN LENGTH = 27.05cm N= 501
NUMBER OF SUBSAMPLES : 15



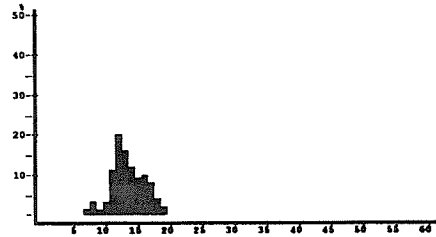
Parapenaeus longirostris, male
Cabinda - Luanda
MEAN LENGTH = 10.76cm N= 1068
NUMBER OF SUBSAMPLES : 21



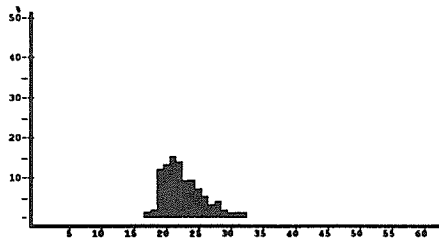
Parapenaeus longirostris, fem.
Cabinda - Luanda
MEAN LENGTH = 11.46cm N= 1757
NUMBER OF SUBSAMPLES : 21



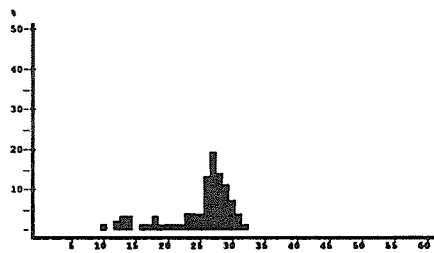
Aristeus varidens, male
Cabinda - Luanda
MEAN LENGTH = 11.78cm N= 601
NUMBER OF SUBSAMPLES : 15



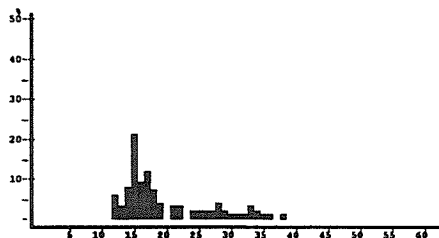
Aristeus varidens, female
Cabinda - Luanda
MEAN LENGTH = 14.00cm N= 506
NUMBER OF SUBSAMPLES : 16



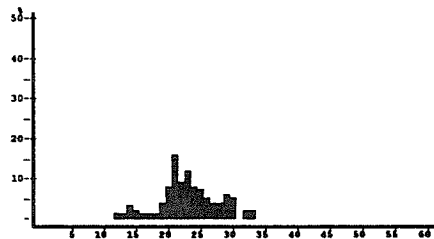
Dentex macrophthalmus
Luanda - Benguela
MEAN LENGTH = 22.96cm N= 1091
NUMBER OF SUBSAMPLES : 22
SAMPLES FOUND BETWEEN ST. NO. 184 AND 252.



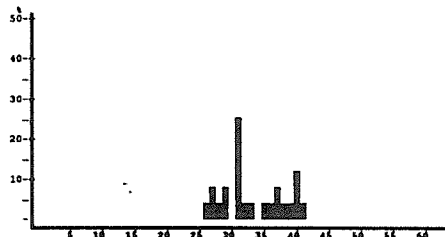
Dentex angolensis
Luanda - Benguela
MEAN LENGTH = 25.81cm N= 246
NUMBER OF SUBSAMPLES : 8



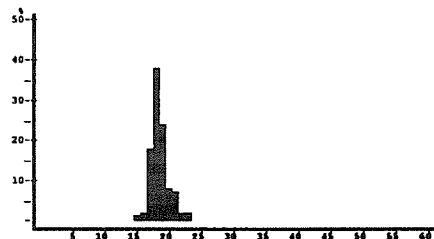
Dentex canariensis
Luanda - Benguela
MEAN LENGTH = 19.83cm N= 166
NUMBER OF SUBSAMPLES : 5



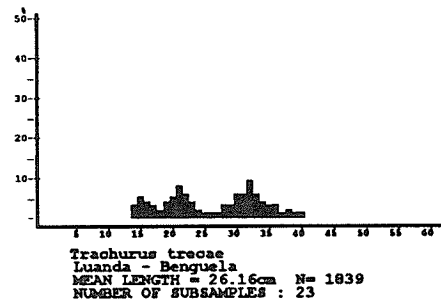
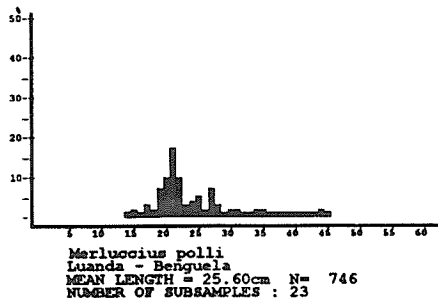
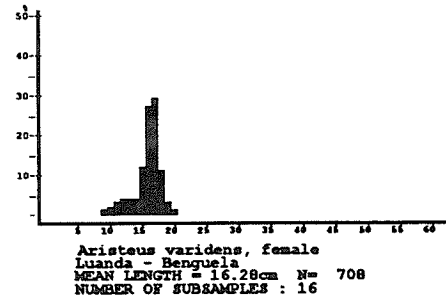
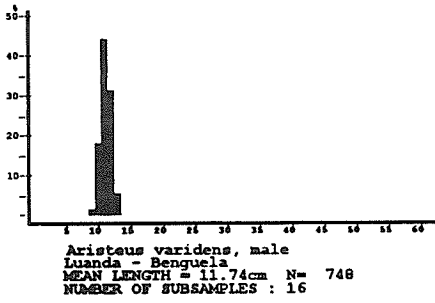
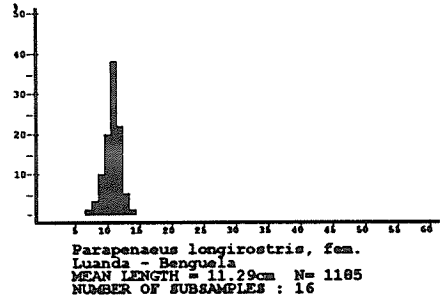
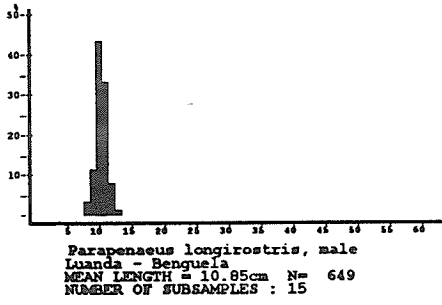
Pagellus bellottii
Luanda - Benguela
MEAN LENGTH = 23.78cm N= 293
NUMBER OF SUBSAMPLES : 8

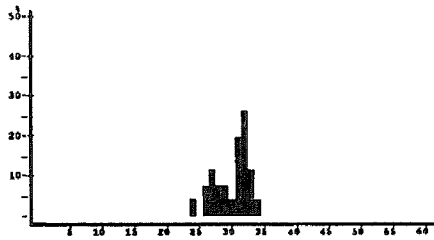


Ubrina canariensis
Luanda - Benguela
MEAN LENGTH = 33.83cm N= 24
NUMBER OF SUBSAMPLES : 1

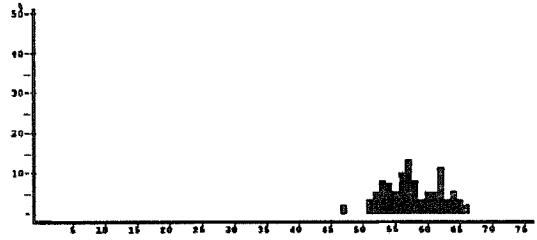


Brachydeuterus auritus
Luanda - Benguela
MEAN LENGTH = 19.01cm N= 184
NUMBER OF SUBSAMPLES : 1





Selene dorsalis
 Luanda - Benguela
 MEAN LENGTH = 30.61cm N= 27
 NUMBER OF SUBSAMPLES : 1



Sphyræna quachancho
 Luanda - Benguela
 MEAN LENGTH = 58.22cm N= 60
 NUMBER OF SUBSAMPLES : 1