

STAGE 1
EGGS

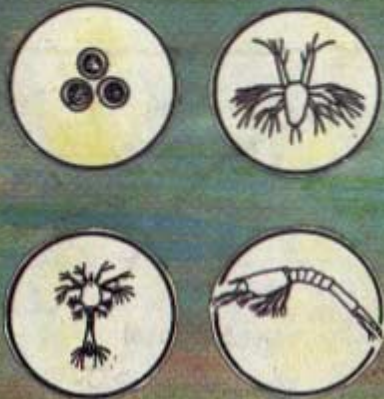
STAGE 2
LARVAE

STAGE 3
LARVAE

STAGE 4
POST LARVAL

This is how the eggs and larvae look through the microscope. They look very different from the adult Tiger Shrimp.

The eggs hatch into larvae in 4 or 5 days and rise to the surface. In the next 3 or 4 days the current carries them inshore to lagoons.



They stay there for one or two months, living close to the muddy bottom. Then they slowly move towards the open area.



There, when they are 4 to 5 months old, they begin to mate. Some months later, the females lay eggs. They keep moving slowly out towards the deep sea for the next few months till they reach depths of 60 to 70 metres. During this period they continue to mate and lay eggs.



At 70 metres depth each of them is almost twice the length of my palm and weighs about 350 grammes.



The Life Cycle of the Giant Tiger Shrimp

