

Joint action to enhance flash flood early warning systems in the Pacific

Lucía Gamarra, Senior Partnerships and Impact Officer
Thursday 18 October



Australia – water partners for development

The problem

AUSTRALIA NETWORK NEWS

Solomon Islands National all clear in wake of deadly

Pacific correspondent Sean Dorney and staff

Posted Tue 8 Apr 2014 at 8:13am, updated Tue 8 Apr 2014 at 6:08pm



Fiji floods: Days of torrential rain cause severe more rain forecast

South Pacific islands running out of water

By Hilary Whiteman, CNN

October 4, 2011 – Updated 0936 GMT (1736 HKT)



Locals helping with the transfer of emergency water supplies by the Government of Tuvalu and the Tuvalu Red Cross.

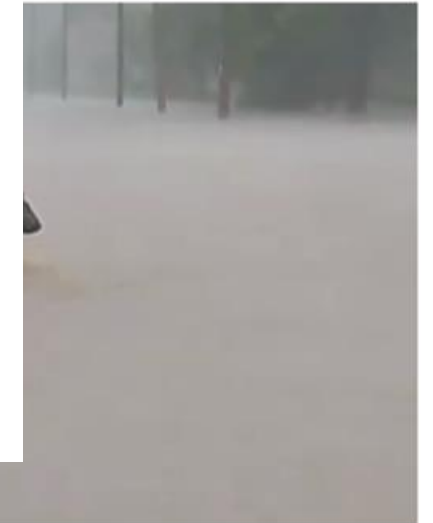
HIDE CAPTION

Drought hits South Pacific islands

BBC NEWS



Emergency declared as



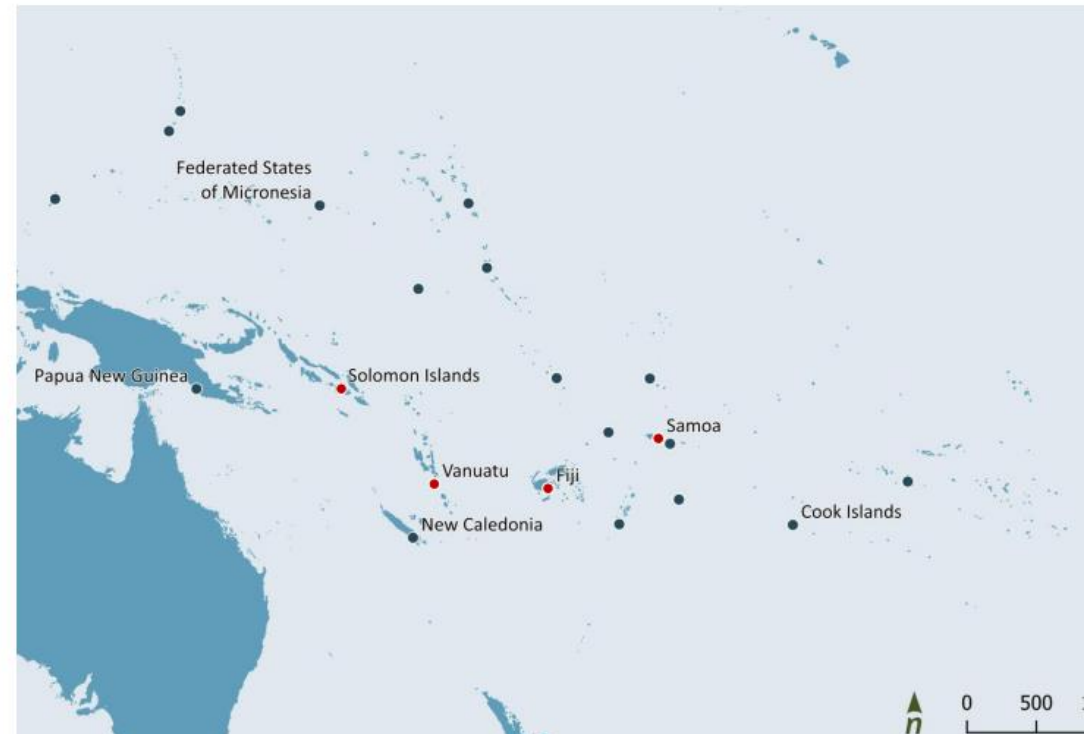
Impacts of floods are felt disproportionately

men
women & children

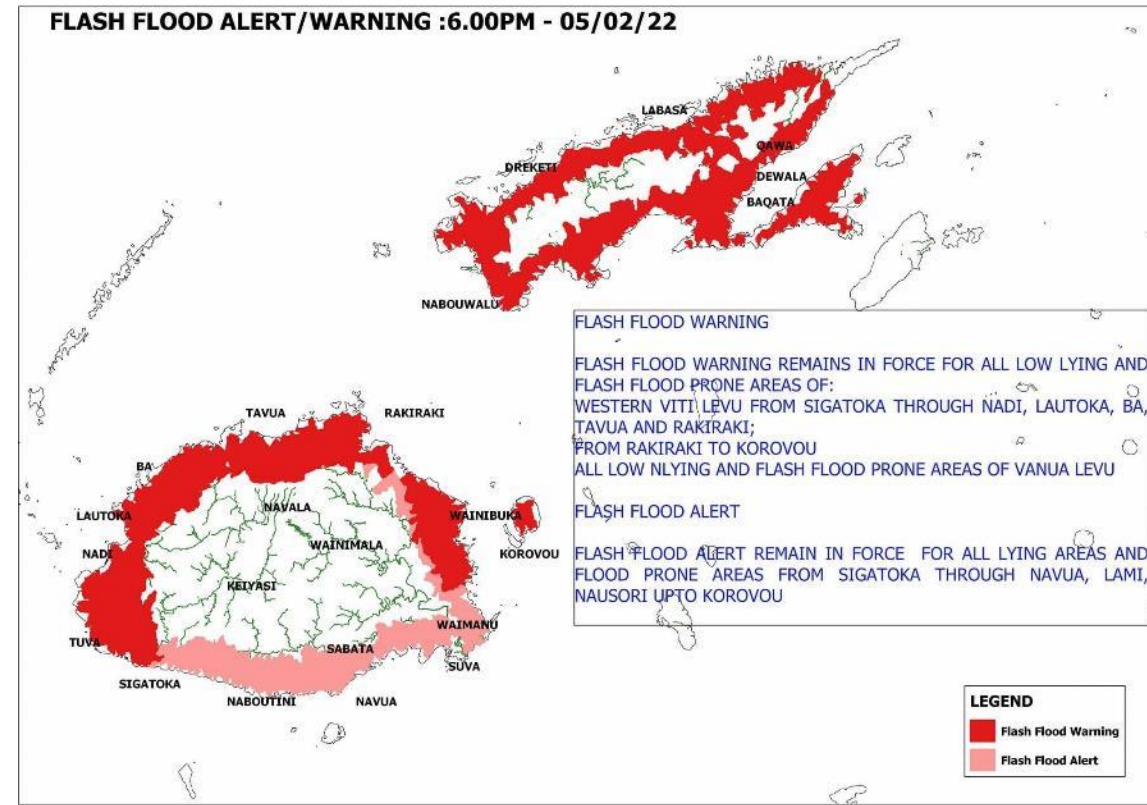


Morbidity to natural disasters (UNDP, 2018, pp. 4)

Technical support in surface water hydrology focused on flash flood Early Warning Systems



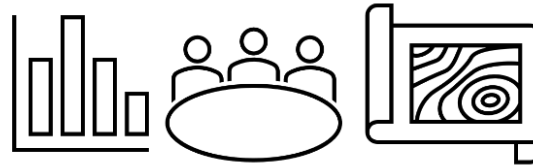
Hydrology – capacity, infrastructure and knowledge products



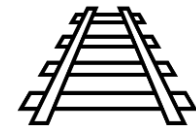
Approach



Stakeholder and community engagement



Technical support, knowledge exchange, and capacity development



Development of strategy for improved flood EWS

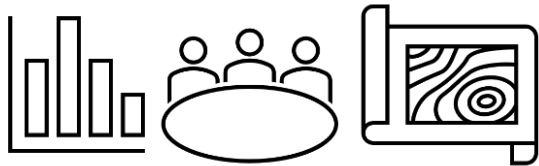
Fiji national flood early warning stakeholder workshop, August 2022



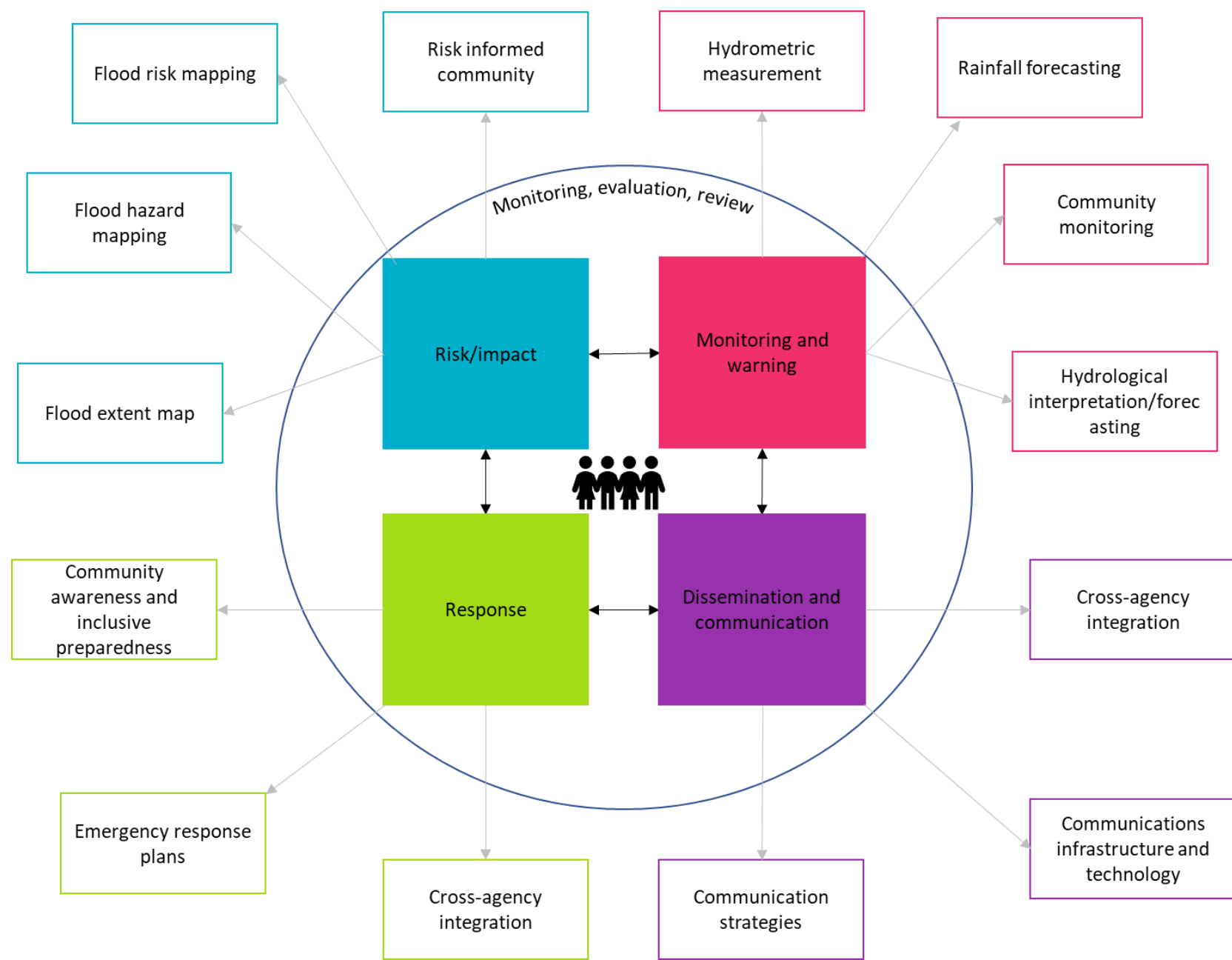
Stakeholder and community engagement

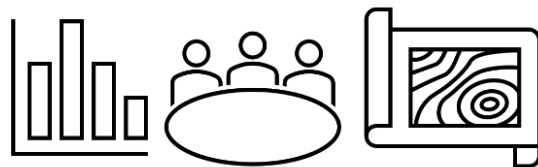
Online regional workshop, June 2022



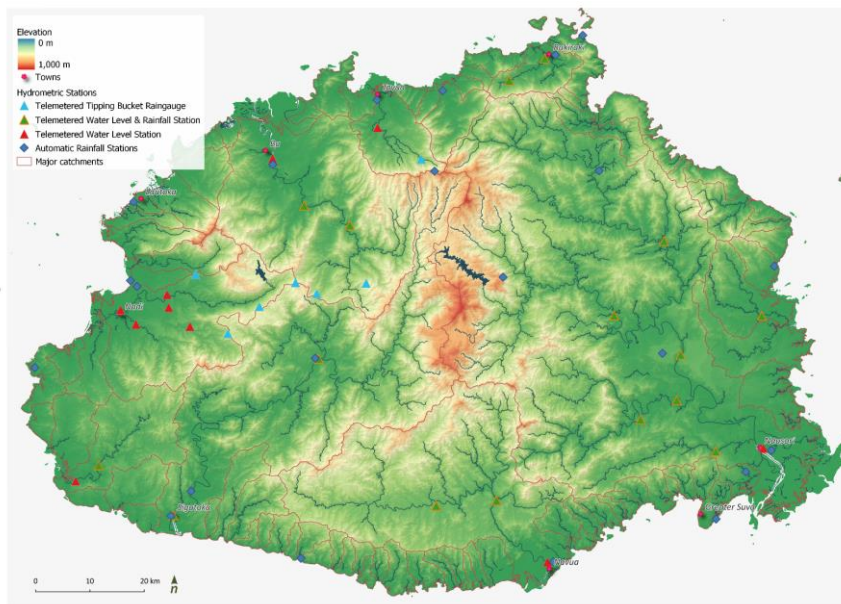


Flood early warning framework





Technical support, knowledge exchange, and capacity development







Australian Government



THE
AUSTRALIAN
WATER
PARTNERSHIP

The Australian Water Partnership is supported by the Australian Government and managed by eWater Limited

Thanks to the organisers and our partners in this project:



Pacific
Community
Communauté
du Pacifique



Dr Jan Edwards



@WaterPartnersAU



/australianwaterpartnership



/company/water-partners-au

waterpartnership.org.au