



Food and Agriculture
Organization of the
United Nations

SUSTAINABLE
DEVELOPMENT
GOALS



APCAS/24/8.3

ASIA AND PACIFIC COMMISSION ON AGRICULTURAL STATISTICS

30TH SESSION

19–24 May 2024
Kathmandu (Nepal)



BETTER PRODUCTION	BETTER NUTRITION	BETTER ENVIRONMENT	BETTER LIFE



Pakistan Bureau of Statistics

Agricultural Science and Technology Indicators (ASTI) Country Pilot in Pakistan

Item 8: APCAS30
23rd May, 2024

Presented By: Dr. Amjad Javaid Sandhu

Director General (Admn.) / Deputy Director General (Statistics)

ساتویں زراعت شماری
2024



زراعت شماری - بدلے قسمت ہماری



7TH AGRICULTURAL CENSUS 2024
Integrated Digital Count

PRESENTATION SEQUENCE

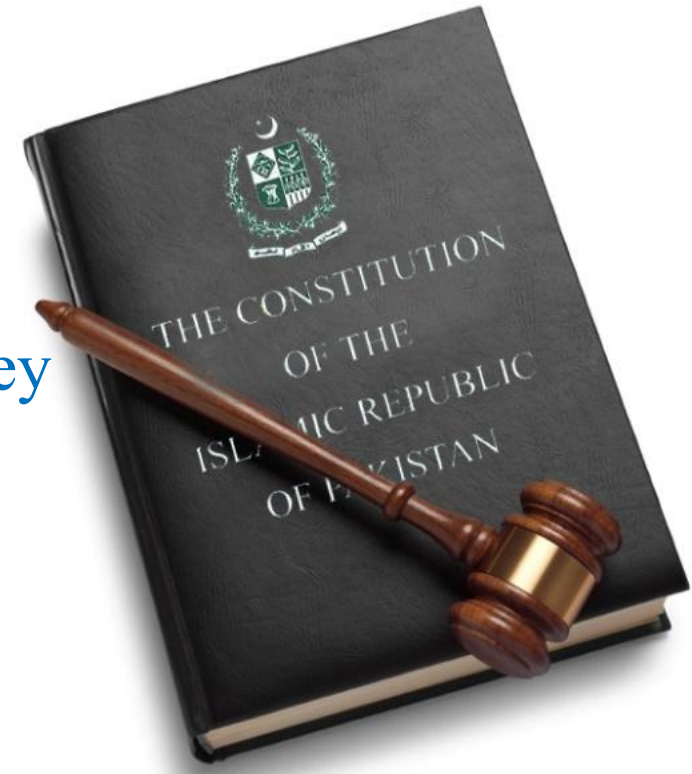
- Introduction
- Functions of PBS
- Agricultural Statistics in Pakistan
- Agriculture Related Censuses and Surveys
- ASTI Country Pilot and NSS Integration
- Training and Field Operation
- Field Operation Methodology and Workplan for ASTI
- Discussion Points





General Statistics (Reorganization) Act, 2011 empowers Pakistan Bureau of Statistics (PBS): to collect, compile, process, and disseminate **official statistics** in Pakistan. PBS is conducting various censuses and surveys

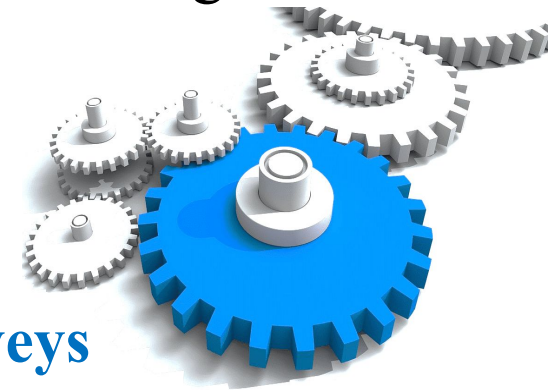
- Population and Housing Census
- Agricultural Census
- Census of Manufacturing Industries
- Pakistan Social and Living Standards Measurement Survey
- Labor Force Survey
- Pakistan Demographic Survey
- 45 surveys for National Accounts
- Many other surveys





Being NSO, Pakistan Bureau of Statistic (PBS) is responsible:

- To formulate principles for collection, compilation, and dissemination of official statistics
- Provide standardized concepts, definitions, and classifications pertaining to official statistics
- Being custodian of Sampling Frame in Pakistan
 - **Plan, coordinate, prepare and execute annual program of surveys**
 - **Execute all national censuses and surveys**
- Cooperation with National, International bodies and committees in all statistical matters





Being NSO and Custodian of sampling frame, PBS also provide various services to National & International organizations under General Statistics (Reorganization) Act, 2021

Services Provided

- Sample Designing including estimation of sample size, allocation of sample size
- Provision of maps of selected blocks
- Physical identification of Boundaries(if needed)
- Assistance in Training if needed
- Field Data collection (If PBS staff is available without affecting activities of PBS)
- Preparation of Data collection software/ Data Validation software
- Preparation of Tabulations/ Descriptive reports



1. Population & Housing Census	7. Pakistan Social & Living Standards Measurement Survey(PSLM District Level)	13. Pakistan Demographic Survey (PDS)
2. Mouza Census	8. Household Integrated Economic Survey (HIES Provincial Survey)	14. Price Statistics SPI, CPI, RPI, WPI
3. Agricultural Census	9. Labour Force Survey (Provincial level Survey)	15. Social Statistics (Gender & Environment)
4. Milk production and animals slaughtered surveys	10. Labour Force Survey (<u>District level Survey</u>)	16. Trade Statistics
5. Census of Manufacturing Industries (CMI)	11 National Accounts, Annual and Quarterly (GDP, GFCF etc.)	17. Decision Support Systems
6. Electronic Data Collection with Monitoring Dash Boards	12. Energy and Mining Statistics	18. Data Dissemination Systems



- United Nations Statistics Division (UNSD) has assigned the monitoring & reporting of **SDGs to National Statistical Offices**
- Extensive exercise on Data Gap Analysis by PBS& Planning (Report Published)
 - Availability of Data for baseline
 - Review of Questionnaires of **PSLM ,PDS,LFS, and MICS**
 - Lead ministries and reporting agencies were identified and involved for reporting of their relevant areas
 - Identification of stakeholders within the Ministries



SDG Indicators Covered by PBS

Sr.no	Goals	Targets	Indicators	PSLM	PDS	LFS	NA	Price Statistics	Social Statistics	Agriculture Census/Special Survey	PBS (institutional Data)	Total
1	Poverty	7	10	4	-	1	-	-		-		5
2	Nutrition	8	14	2	-	-	1	1		3		7
3	Health	13	26	8	1	-	-	-	1	-		10
4	Education	10	11	5	-	1	-	-		-		6
5	Gender Equality	9	14	3	-	1	-	-		-		4
6	Water & Sanitation	8	11	2	-	-	2	-		-		4
7	Energy	5	6	2	-	-	-	-		-		2
8	Economic Growth, Decent work	12	15	-	-	6	2	-		-		8
9	Infrastructure	8	12	1	-	1	2	-		-		4
10	Inequality among countries	10	11	2	-	1	-	-		-		3
11	Sustainable Cities	10	15	1	-	-	-	-		-		1
12	Consumption & Production	11	13	-	-	-	-	-		-		
13	Climate Change	5	6	-	-	-	-	-		-		
14	Marine resources	10	10	-	-	-	1	-		-		1
15	Ecosystems	12	12	-	-	-	-	-		1		1
16	Peaceful Societies	12	21	1	-	-	-	-	1	-		2
17	Global Partnership	19	25	1	-	-	-	-		-	3	4
	TOTAL	169	232	32	1	10	8	1	2	4	3	62



Pakistan Bureau of Statistics collects and disseminates various Agriculture related Statistics through primary and secondary data sources i.e.

Primary Data collection activities

- Agricultural Censuses and Surveys
- Mouza Census (Rural Statistics) as part of Agricultural Census
- Data related to Global Food Insecurity Experience Scale (HIES, PSLM)

Secondary Data collection activities

- Area and Production of different crops, land utilization, fertilizer, pesticides etc. (CRS)
- Number of Tractors and Tubewells (manufacturer and imports)
- Irrigation water availability (IRSA and WAPDA)



Three Types of Agriculture Related Censuses were conducted, separately

Moreover various allied surveys were also conducted such as:

- Six Agricultural Censuses



- Five Agricultural Machinery Censuses



- Four Livestock Censuses



- Nine Mouza (Village) Censuses



- Milk production
- Milk processing industries
- Slaughtering
- Commercial Poultry
- Wool Production
- Migratory herds

- 7th Agricultural Census has been planned by merging



Agricultural Census

Livestock Census



Agricultural Machinery Census

- Questionnaires, tabulation plan, and sample design have been finalized
- Training will be conducted in July, 2024
- Complete ERP Solution, and Tablet Based Data Collection Applications for Listing and Enumeration have been developed in-house by PBS itself.
- HR and NCH Portal for big holdings application is in practice in the field
- The big holdings called National Certainty Holdings (NCH) will be enumerated on 100 %
- NCH will be enumerated in August 2024, rest of the HHs will be enumerated in September-October, 2024

NCH

National Certainty Holdings

All Government farms:
agriculture and livestock,

100 Acres of Land

50 Cows, Buffalos or both

200 Goats, Sheep or both

25 Camels



MCH

Mouza Certainty Holdings

Found in Selected Mouza/block

20 Acres of Land

20 Cows, Buffalos or both

50 Goats, Sheep or both

20 Camels



- **The ASTI exercise** was conducted by PARC in Pakistan
- Now the PBS has been involved in this exercise **by the FAO**
- **Being NSO**, PBS is already collecting agriculture related data
- Total NARIs in Pakistan are **304 (excluding universities)** which are included in **updated list of big holdings (NCH)** for 7th Agricultural Census 2024
- **Sample** for ASTI Country Pilot in Pakistan will be selected **proportionally for agriculture and livestock** research farms and for universities
- Sample size of **30 NARIs** is proposed for pilot



- **Census Coordinators of PBS** are already working at district level
- Lists of NCH have been prepared with the **support of provinces**
- Most of the Incharges of **NARIs** are already working with PBS **for 7th**

Agricultural Census

- **Deputy Commissioners** will supervise the Census field operation
- PBS can **develop portal** for ASTI Country Pilot by **own IT team**
- **Data collection** can be easily managed with **enumeration of NCH** for the

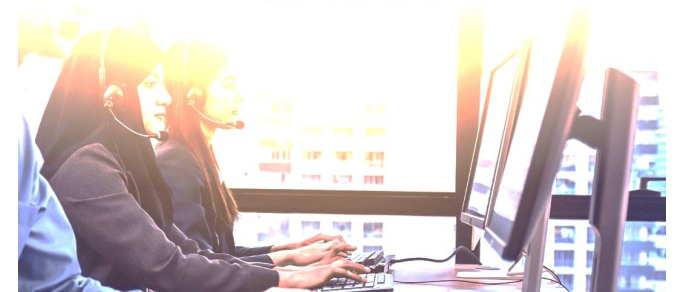
Agricultural Census



- **Inception workshop** is the most important part of whole exercise
- **Videos** can be prepared for training purpose to explain the scientific concepts, along with user manual
- **Simulation exercises can** also be included
- At least one **field visit can** be arranged for practical, during training
- **24/7 Call Center of PBS can be** utilized for pilot as it will also work for NCH enumeration in August, 2024



To ensure the accuracy and reliability of collected data, we are following international standard quality assurance processes like Computer Assisted Telephonic Interviews with randomly selected households



- PBS successfully implemented **Self-Enumeration Portal** during 7th Population and Housing Census 2023
- **CAWI approach** will be exercised for data collection during the Pilot
- Web solution for data collection with edits and consistency checks will improve **Data Quality** significantly
- PBS coordinator will also **help the NARI** for questionnaire filling.
- **Data retrieval** from the field through PBS staff



Work Plan for ASTI Country Pilot in Pakistan

Activity	Time	Remarks
Sample Selection	June, 2024	PARC and PBS
NSS Integration	initiated	PARC and PBS
Focal Person from PBS	Nominated	
Inception Workshop	June-July, 2024	FAO, PARC, and PBS
Data Collection	August, 2024	PARC and PBS (NCH enumeration)
Quality assurance and data validity	September-October, 2024	PARC and PBS
Lessons learnt report	November-December, 2024	PARC and PBS



- Data editing and validation through applying various quality checks, will be ensured at PBS, HQs with the help of PARC
- After data processing and quality assurance, the tabulation will be generated
- The tabulations will also be analyzed through logical trends
- PBS has team and skills required to develop **Data Analytical Dashboard for visualization of trends**
- After all the steps of **data processing, the report will be prepared** for further guidance towards actual census of NARIs



- Scope of ASTI, we may look into
 - a) Whether all the agricultural, veterinary research institutions and universities/colleges have been included in the frame of NARIs?
 - b) Private farms like Michel's farm in district Okara
 - c) What about poultry and fishery?
 - d) To gauge the ultimate benefit of the agriculture research, scope of ASTI may be extended towards progressive & big farmers, and even processing industries in future
- ✓ Any other proposal / comment

THANK YOU

My Email
amjadsandhu@hotmail.com



زراعت شماری - بدلے قسمت ہماری