



22nd Session
of the Codex
Committee on
Food Import
and Export
Inspection
and
Certification
Systems

6-12
February 2016
Melbourne,
Australia

The Venue



The 22nd Session of the Codex Committee on Food Import and Export Inspection and Certification Systems will be held from 6 - 12 February 2016 in Melbourne, Australia at the:

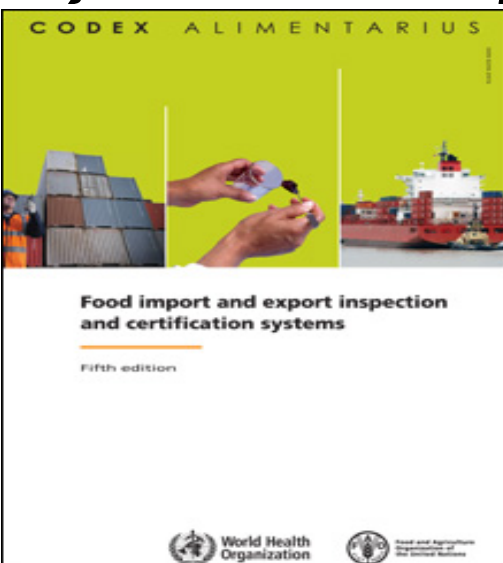
Pullman on the Park

192 Wellington Parade
Melbourne, Australia 3002
Ph: +61 3 9419 2000

The Pullman on the Park is a 5 star hotel with 24 hour reception, restaurant and bar, business centre, gymnasium and pool. Codex Australia has made arrangements with the Pullman to hold 30 rooms for CCFICS delegates. CCFICS Delegates will receive a room rate of \$235 per night (not including breakfast) between 5 - 13 February 2016. Bookings need to be made as soon as possible to secure this rate. Alternative accommodation is provided further within this document.

To make a booking, contact the hotel reservations desk H9875@accor.com and reference 'Codex Committee' to receive this rate. Please note that bookings must be made at least 30 days prior to the meeting to receive this rate.

General Information



Registration

Australia is using the online registration system for delegate registration. Delegates must be registered by their Codex Contact Point by no later than **8 January 2016** using the following link: www.codexalimentarius.org/login Email or facsimile registrations will not be accepted.

Working Documents

All working documents for the meeting are available online at www.codexalimentarius.org. No hard copy documents will be available at the meeting (except Conference Room Documents).

Onsite Registration

The registration desk will be open from [11.30 am to 1.30pm on Saturday 6](#) February and from 8am [Sunday 7](#) February outside the plenary room at the Pullman. Delegates must register at the desk before entering the meeting. Delegates are encouraged to bring a business card with them when registering to assist in the review and finalisation of the official participants list.

Internet/ Wi-Fi

Internet will be available to delegates in the plenary Monday through to Wednesday and again on Friday. There will be limited access due to the cost so please refrain from using Wi-Fi unless necessary for CCFICS work.

Visas



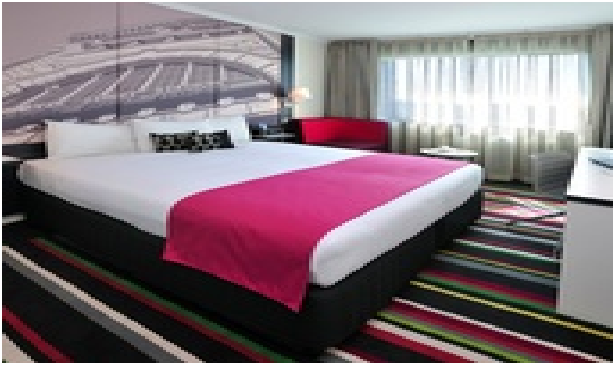
It is important that you lodge your visa application as soon as possible and at least six weeks before your intended travel to allow sufficient time for processing. Codex Australia will not be able to provide individual invitation letters to facilitate visa applications. Anyone who is not an Australian citizen needs a valid visa to enter and spend time in Australia. There are different visas for tourists, business people, sports people, students and others.

All visas must be obtained before travelling. Visitors can apply for Australian visas at Australian government missions overseas or electronically through travel agents and airlines in many parts of the world. For more information please visit <http://www.immi.gov.au/skilled/business/>

With your application you should lodge:

- The official invitation letter for CCFICS;
- A letter from your current employer confirming your employment, the purpose of your visit and employer contribution (if any) to your expenses
- Evidence of travel arrangements (flight itinerary, tickets, etc)
- Evidence of sufficient funds to meet any personal expenses
- Your valid passport and application fee

Alternate Accommodation



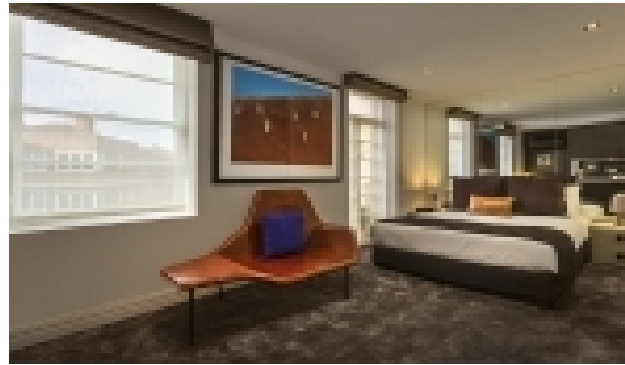
Mercure Treasury Gardens

13 Spring Street, Melbourne VIC 3000

Ph: +61 3 9205 9999

<http://www.mercuremelbourne.com.au/>

Mercure Treasury Gardens is a 4 star hotel featuring 164 guest rooms and suites. Rooms feature large work desk, bar, tea and coffee making facilities, and climate controlled heating or air conditioning. The Privilege Guestrooms offer a private balcony and include complimentary internet access, daily newspaper and Nespresso coffee machine. Please visit their website for room rates.



Quest East Melbourne

48 Wellington Parade, Melbourne VIC 3002

Ph: +61 3 9413 0000

http://www.questapartments.com.au/Accommodation/60/Australia/Melbourne_CBD_Fringe/Quest_East_Melbourne/Welcome.aspx

Quest East Melbourne serviced apartments offer guests a relaxed and comfortable accommodation experience. Studio suites feature the latest in interior design with kitchenette, flat screen tv, work desk and broadband internet access. There are also Studio twin apartments available which can accommodate 4 adults. The property is in close proximity to a number of restaurants and cafes. Rates for Studio Suites start at \$375 per night over the week of CCFICS.



Mantra on Jolimont

133 Jolimont Road, Melbourne VIC 3002

Ph: +61 7 5665 4450

<http://www.mantra.com.au/victoria/melbourne-and-surrounds/melbourne/accommodation/hotels/mantra-on-jolimont/#>

At Mantra on Jolimont hotel you can choose from Studio, One Bedroom Apartments or the combination of the two rooms as a dual key Two Bedroom Apartment. The property has room service, a licensed bar, gymnasium, swimming pool, restaurant, full laundry services and internet access. Studio rooms start from \$199 per night over the week of CCFICS.

Getting There



Melbourne International Airport is Australia's second busiest airport. It is located only 25 minutes from the Melbourne CBD with connecting flights from 30 international destinations.

Taxis are readily available from Melbourne Airport and major car rental companies are also at the airport.

The Skybus Express Bus Service offers an express bus service from the airport to the city centre. The service operates 24 hours a day, 7 days a week and buses run from every 10 minutes throughout the day. Tickets can be purchased on arrival at the bus stop. On arrival at Southern Cross Station in the city, Skybus provides a complimentary hotel transfer service subject to availability during the hours of 6am – 11pm Mon-Fri, 7:30am – 5:30pm Saturday and Sunday.

Immigration, Customs & Quarantine Declaration Forms

Prior to landing in Australia you will be handed an Immigration form to fill out, as well as Customs and Quarantine Declaration Forms. Australia has strict quarantine laws which require you to declare for inspection all food, plant material and animal products to ensure they are free from pests and diseases. Failure to comply with quarantine requirements or providing false declarations can result in significant financial penalties and/or imprisonment.

Climate and Time Zone



Climate

Melbourne has a reputation for its changeable weather. As a general rule Melbourne enjoys a temperate climate with warm to hot summers, mild and sometimes balmy springs and autumns and cool winters.

Typical daytime min/max temperature ranges in Melbourne for February are 14°C - 25°C

Time Zone

Australian Eastern Standard Time (EST) is GMT + 10 Hours. Daylight savings is in effect in Melbourne.

Currency and Foreign Exchange



Australian dollar AUD \$1.00 = 100 cents

Coin denominations

5C, 10C, 20C, 50C, \$1, \$2

Note Denominations

\$5, \$10, \$20, \$50, \$100

Currency exchange facilities are available at all international airports and key tourist centres. Traveller's cheques can also be cashed at banks and major hotels. ATMs are widely available.

Major credit cards are accepted at most shops, hotels and restaurants, with American Express, Bankcard, Diners Club, MasterCard and Visa the most common.

Banks are open from 9.30am to 4.00pm Monday to Thursday and from 9.30am to 4.30pm on Friday. Bureau de Change facilities have more flexible hours and are generally open at night and on weekends.

Eating Out and Shopping



Flinders Lane

Flinders lane is a minor street in the central business district of Melbourne. The street runs parallel to the north of Flinders Street. The lane hosts home to many restaurants and is a short walk from the Pullman on the Park.

Chinatown, Melbourne

Chinatown is a distinctive and well known area of Melbourne and is the longest continuous Chinese settlement in the western world. The main focus is along Little Bourke Street with alleys that link the area to Bourke Street and Lonsdale Street.

<http://chinatownmelbourne.com.au/>

206 Bourke Street

206 Bourke Street is a gateway to Chinatown and Melbourne's most exciting new retail and dining destination. 206 gives shoppers and diners an exciting of fusion of food, entertainment and retail. Open 10am-10pm 7 days a week.

Things to do and see



Australian Centre for the Moving Image (ACMI)

Australia's coolest cultural destination, ACMI has everything from a century of film to the latest computer games and digital art of the future. It hosts a vibrant calendar of exhibitions and festivals, creative workshops and education programs. ACMI is located at Federation Square, corner of Swanston and Flinders Streets in Melbourne.

Melbourne Cricket Ground (MCG)

The Melbourne Cricket Ground is Australia's premier sporting stadium. The tenth-largest stadium in the world, the MCG is also the largest cricket stadium venue. The site has hosted cricket games since 1853. Visit the National Sports Museum on-site and take a behind the scenes tour of the stadium. Just 5 minutes walk from Pullman on the Park.

Fitzroy Gardens

Fitzroy Gardens is one of Melbourne's most historic and beautiful Gardens. Originally set aside as a reserve in 1848, the layout follows a classic Victorian-era design, featuring pathways lined with magnificent Elm trees, and a variety of flowers, ornamental shrubs and trees which together with extensive lawns create a diverse and layered landscape.

The Fitzroy Gardens visitor centre provides tourism information and entry tickets to Cooks Cottage. A free guided walking tour departs from the visitor centre every Saturday at 10 am.