



Partnership Initiative on
Sustainable Land Management



Caribbean Network For Integrated Rural Development

The Partnership Initiative on Sustainable Land Management (PISLM): The Caribbean's response in combating land degradation in Caribbean SIDS

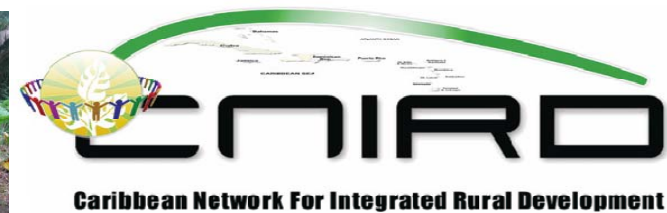
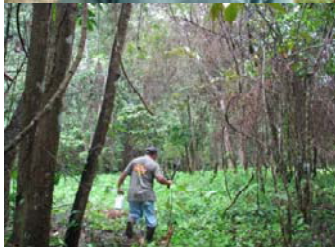
OPEN DIALOGUE SESSION

United Nations Convention to Combat Desertification

Ninth Session of the Committee for the Review of the Implementation of the Convention

Wednesday, 23 February 2011, Bonn, Germany

Calvin James, Director CNIRD



WHAT IS

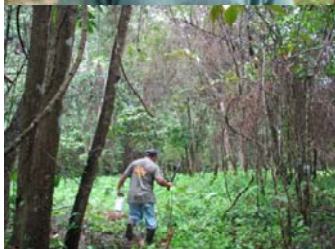
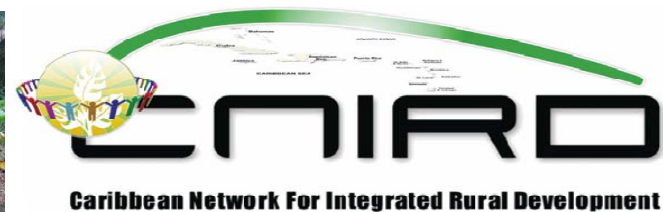




Partners of the PISLM

The following logos are displayed within a black-bordered box:

- Government of Jamaica (Coat of Arms)
- THE GLOBAL MECHANISM (UNITED NATIONS CONVENTION TO COMBAT DESERTIFICATION)
- UNEP (United Nations Environment Programme)
- FAO (Food and Agriculture Organization) with the motto FIAT PANIS
- UNDP (United Nations Development Programme)
- CEC (Caribbean Environmental Centre)
- UNCCD (United Nations Convention to Combat Desertification)
- Coat of Arms of Belize
- LIFAD (International Fund for Agricultural Development) with the tagline "Empowering poor rural people to overcome poverty"
- GTZ (German Technical Cooperation)



Country Parties



CAPACITY DEVELOPMENT

OPEN DIALOGUE SESSION

United Nations Convention to Combat Desertification
Ninth Session of the Committee for the Review of the
Implementation of the Convention

Wednesday, 23 February 2011, Bonn, Germany

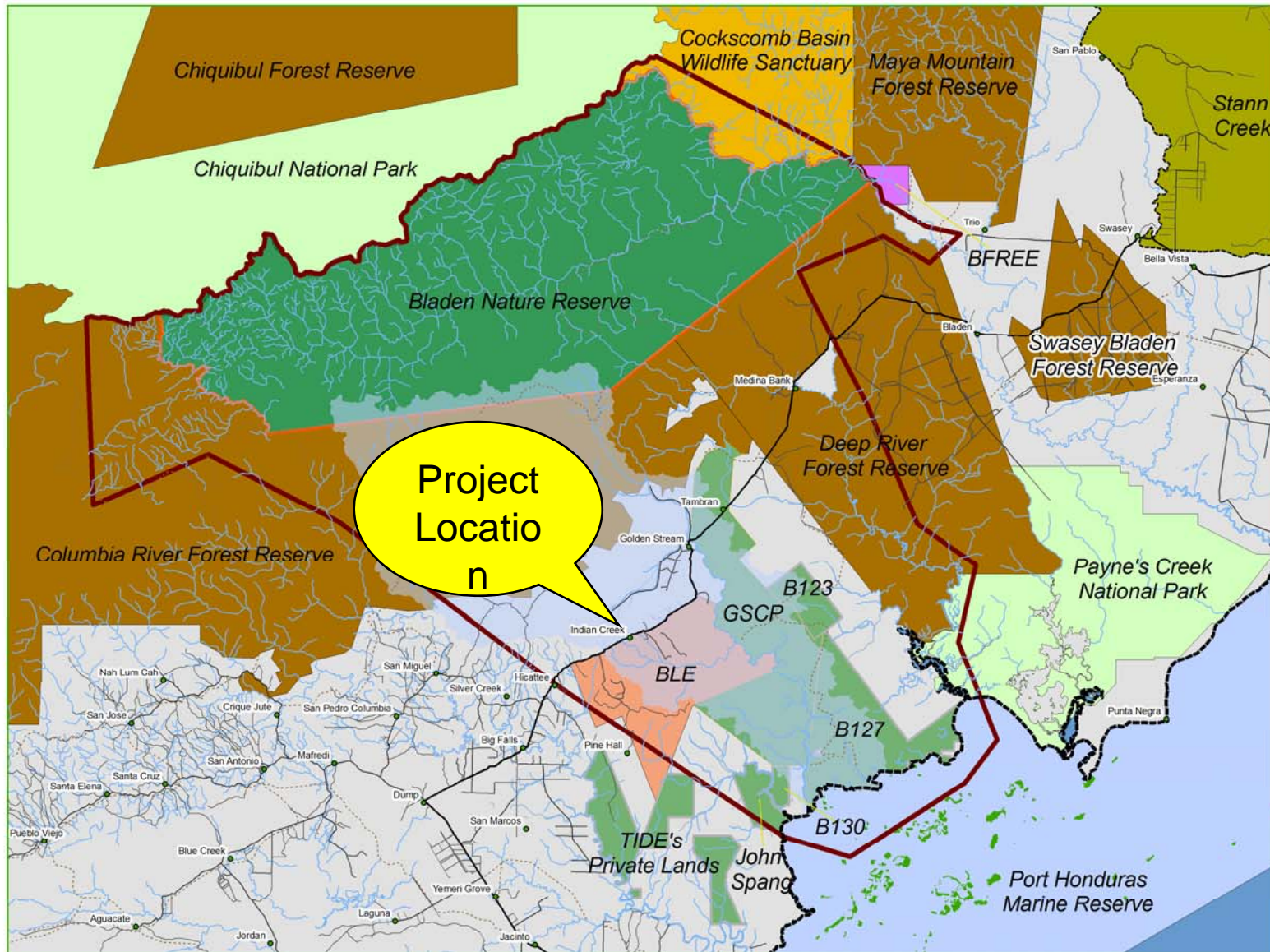


PISLA
 Partnership Initiative on
 Sustainable Land Management



CNIRO
 Caribbean Network For Integrated Rural Development



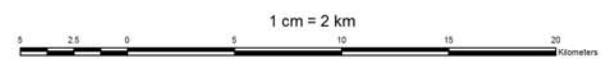


- Legend**
- Settlements
 - Highway
 - Primary Roads
 - Secondary Roads
 - Trails
 - Rivers
 - ▭ Maya Golden Landscape
 - ▭ Golden Stream Watershed
 - ▭ Cayes
 - ▭ Private Protected Area
 - ▭ Nature Reserve
 - ▭ Wildlife Sanctuary
 - ▭ Forest Reserve
 - ▭ National Park
 - ▭ Marine Reserve
 - ▭ Toledo District
 - ▭ Stann Creek District



This is the property of Ya'axché Conservation Trust. All rights reserved.

THE MAYA GOLDEN LANDSCAPE



Projected Coordinate System: NAD_1927_UTM_Zone_16N
 Projection: Transverse_Mercator
 False_Easting: 500000.00000000
 False_Northing: 0.00000000
 Central_Meridian: -87.00000000
 Scale_Factor: 0.99960000
 Latitude_Of_Origin: 0.00000000
 Linear Unit: Meter

Geographic Coordinate System: GCS_North_American_1927
 Datum: D_North_American_1927
 Prime_Meridian: Greenwich
 Angular Unit: Degree



Advancing Participatory Conservation and Sustainable Livelihoods in Southern Belize

The Intervention

Reducing Poverty and Land
Degradation via Integrated Agro-
forestry and Ecotourism in the Maya
Golden Landscape of Southern Belize





Integrated Agro-forestry and Sustainable Land-use Management

Project Goal :

- ❑ To contribute to the sustainable development of the Maya Golden Landscape thereby reducing the level of poverty that exists in this region.





TRAINING





MAINTENANCE OF PLOTS





PREPARATION OF APIARY SITE





Integrated Agro-forestry and Sustainable Land-use Management

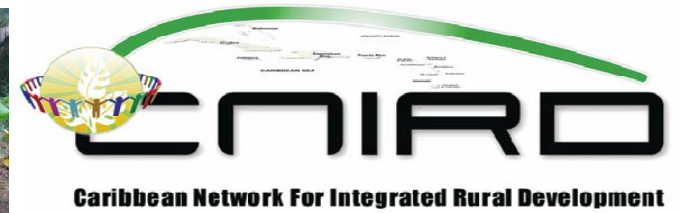
Outputs of Project :

- Increase Capacity of Farmers
- Integrated Agro-forestry Plots Established
- Increased Awareness and Appreciation for Integrated SLM





PISLM
Partnership Initiative on
Sustainable Land Management



PISLM

ST. VINCENT'S RURAL WOMEN'S
AGRI-PRACTITIONER'S PROJECT



PiSLM
 Partnership Initiative on
 Sustainable Land Management

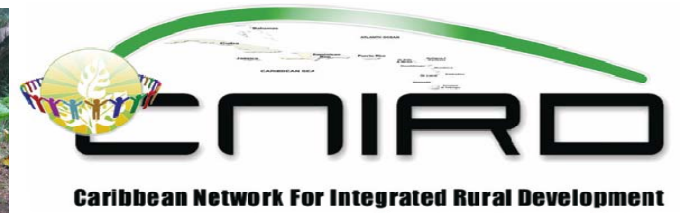


CNIRD
 Caribbean Network For Integrated Rural Development



Project
 Location





LAND DEGRADATION DUE TO SEVERE WEATHER SYSTEM





Project Objectives

- ❑ The development of female farmers trained in plant nutrition and soil fertility techniques.



PISLA
 Partnership Initiative on
 Sustainable Land Management



CNIRD
 Caribbean Network For Integrated Rural Development



TRAINING





PiSLM
Partnership Initiative on
Sustainable Land Management

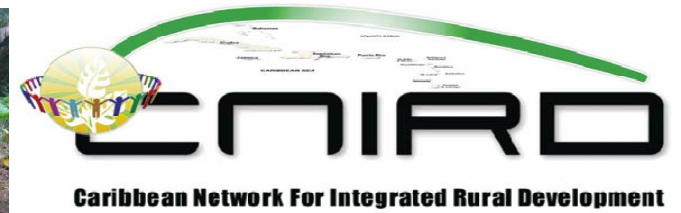


CNIRD
Caribbean Network For Integrated Rural Development



DEMONSTRATION PLOT





THE BUSINESS OF AGRICULTURE





Maximize the Power of Team Work

picture source: www.georgettelambrinidis.com/Home_Page.html



Thank You

**“Land - the foundation on which life
revolves”**