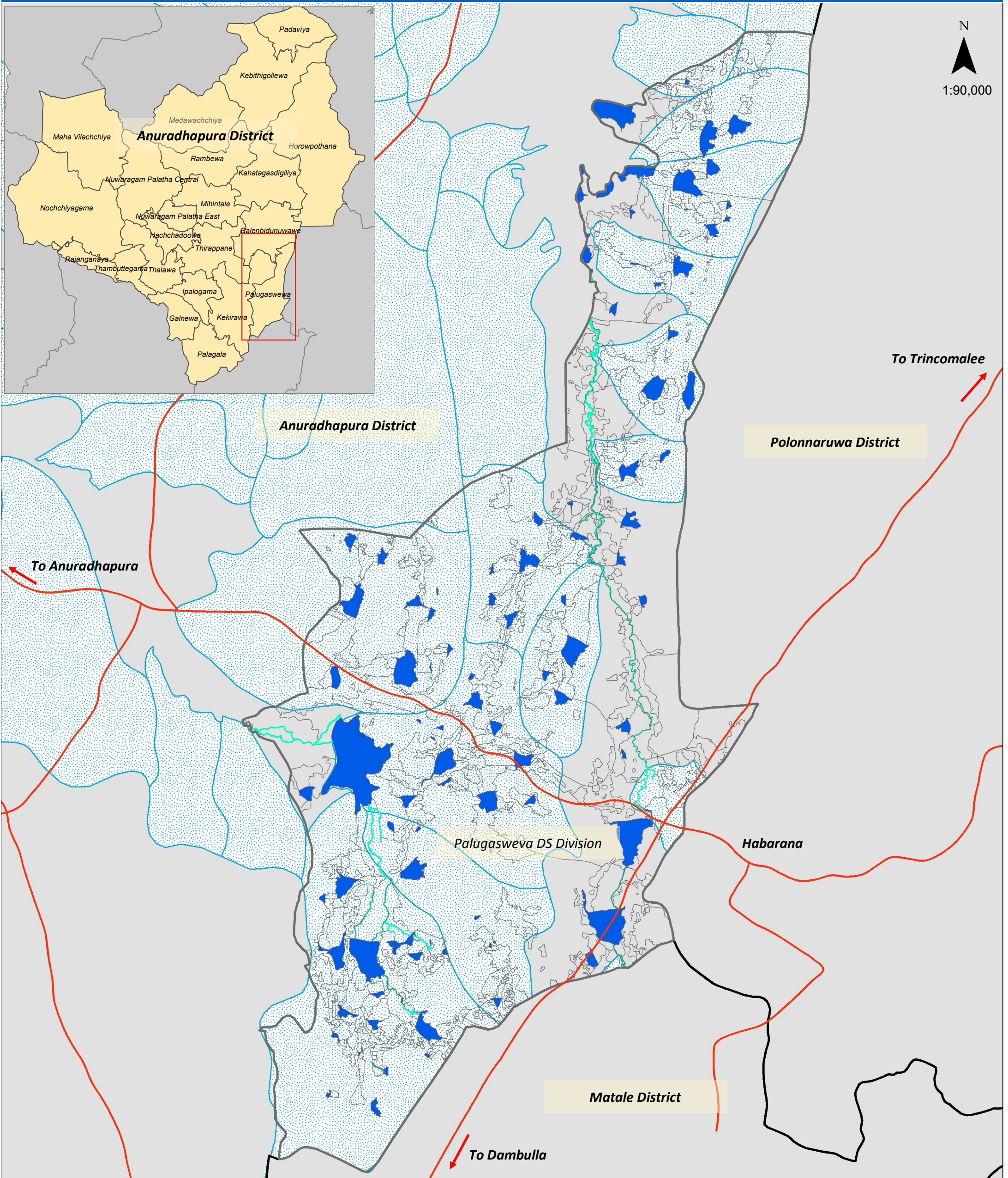


Palugasweva Divisional Secretariat Division (GIAHS Site): Hydrological Connectivity of the Tanks in the Cascades



Location Details

Legend

- Main Roads
- DS Division Boundary
- Streams
- Tanks
- Tank Cascade Boundaries

Data Source: Department of Agrarian Development
 Survey Department of Sri Lanka
 Date of Creation: 31-Jan-2017
 Projection/Datum: Transverse Mercator
 Kandawala
 This map is designed to be printed on A3 size.

Produced By

Food and Agriculture Organization of the United Nations

Food and Agriculture Organization of the United Nations
 202, Bauddhaloka Mawatha, Colombo 7.
 Tel: +94 11 2580798, +94 11 2588537
 Email: FAO-LK@fao.org
 Web: www.fao.org