

## **IPROMO**

**INTERNATIONAL PROGRAMME ON RESEARCH AND TRAINING ON SUSTAINABLE MANAGEMENT OF MOUNTAIN AREAS**



The IPROMO programme offers annual short courses on the management of mountain areas and is organized by the Mountain Partnership Secretariat of the Food and Agriculture Organization of the United Nations (FAO) and the University of Turin.



Since 2008.....







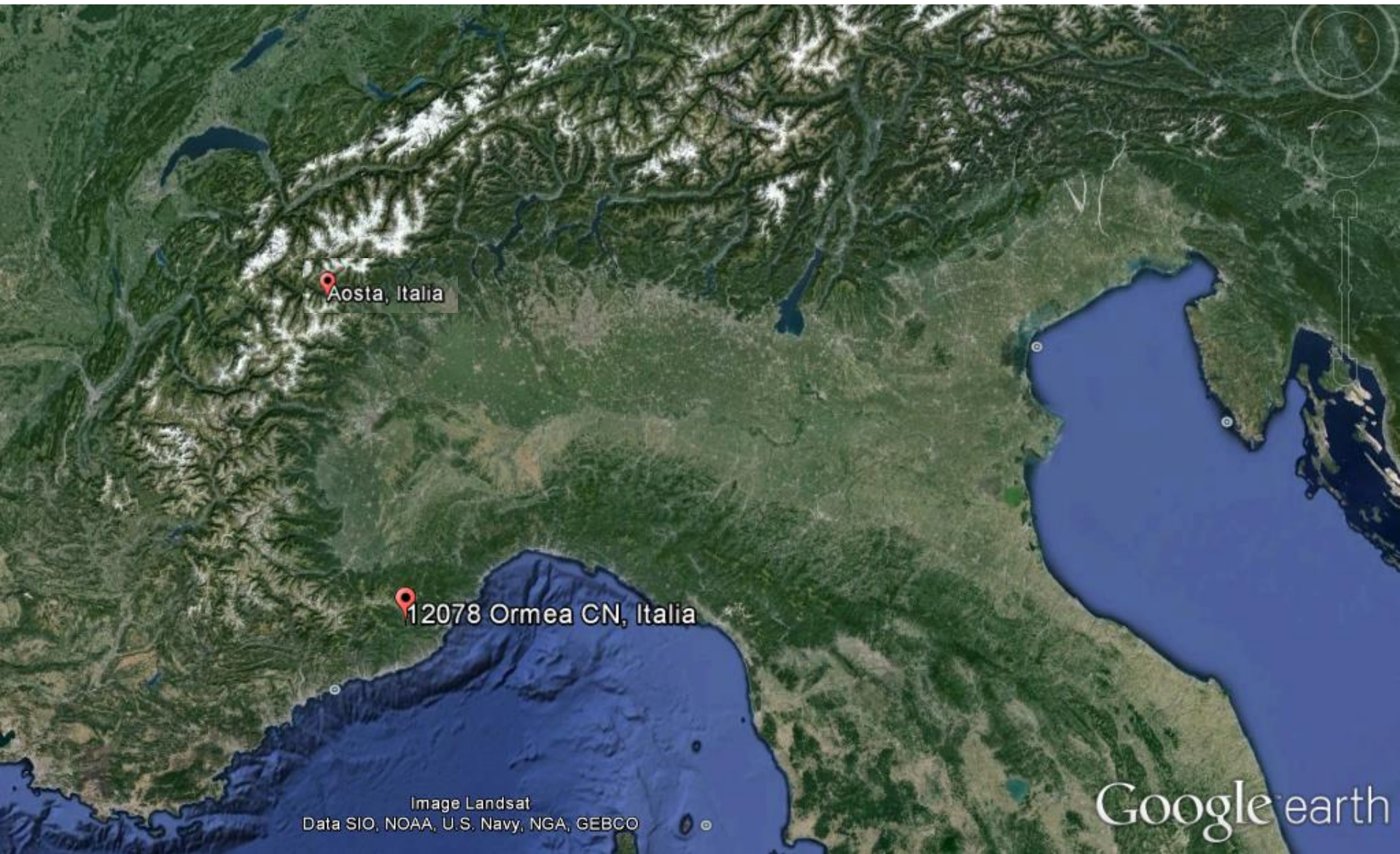
[michele.freppaz@unito.it](mailto:michele.freppaz@unito.it)



In observance of the International Year of Family Farming, as 2014 has been proclaimed by the United Nations General Assembly, this year's IPROMO course will focus on sustainable farming in mountain areas

## **Course 2014: Promoting Sustainable Farming in Mountain Regions**





Aosta, Italia

12078 Ormea CN, Italia

Image Landsat  
Data SIO, NOAA, U.S. Navy, NGA, GEBCO

Google earth





Danilo Godone, the problem solver.....



Mauro Bassignana, the chairman.....





Other friends/colleagues.....



## A definition of mountains and their bioclimatic belts for global comparisons of biodiversity data

Christian Körner · Jens Paulsen · Eva M. Spehn

The only common feature of mountains is their steepness (slope angle to the horizontal) which causes the forces of gravity to shape them and create habitat types and disturbances typical for mountains and which make exposure a driving factor of life (Körner 2004). Because steepness is a feature of each specific slope that cannot be quantified at a spatial scale of such a global database, the Mountain Biodiversity Portal adopts ruggedness as a simple and pragmatic proxy for steepness, to define mountains across the globe.

# Farming in mountain regions.....a great challenge







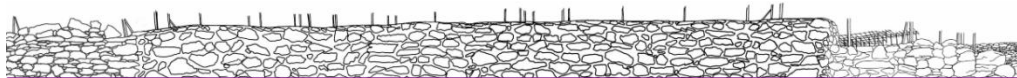
Nepal





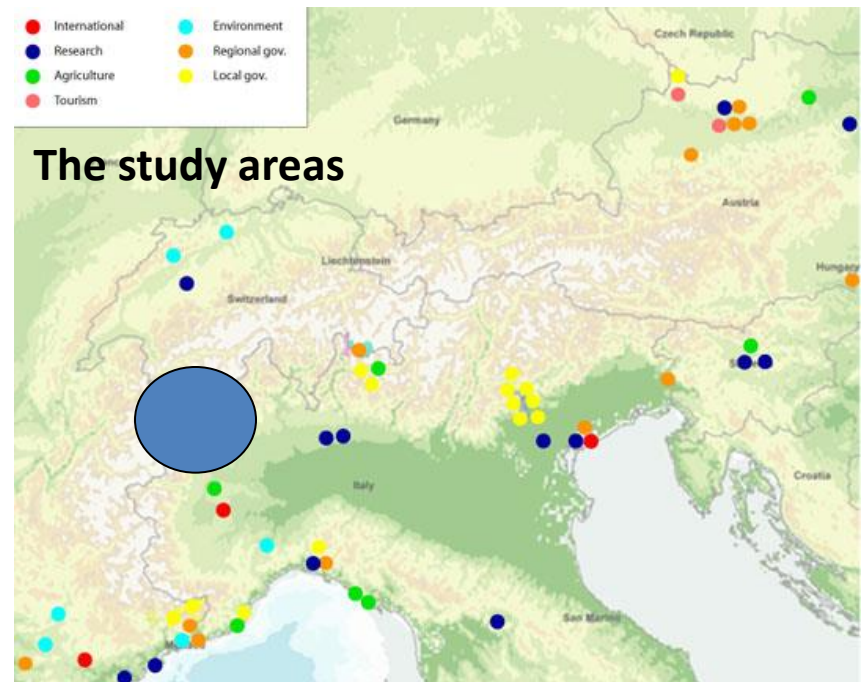
Italy





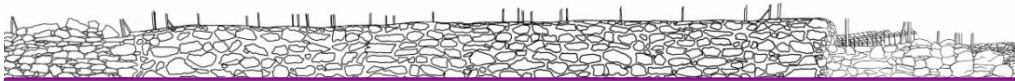
# Project ALPTER

Terraced landscapes of the alpine arc



[www.alpter.net](http://www.alpter.net)

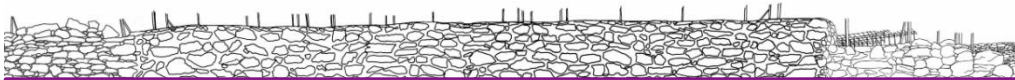




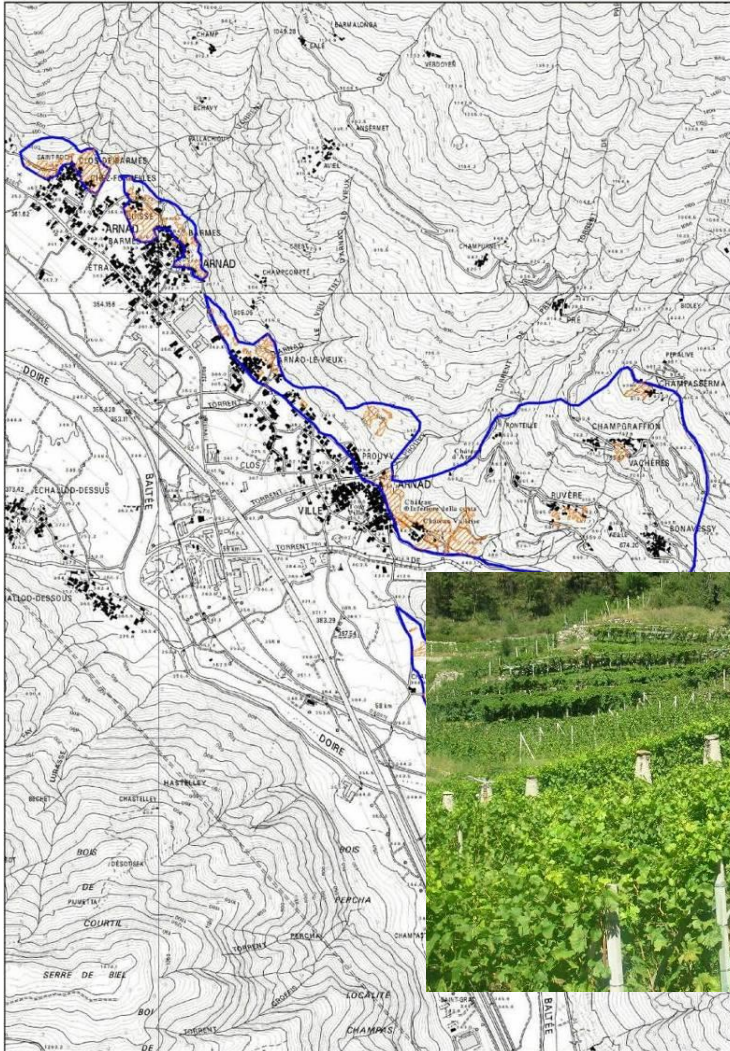
Some examples of terrace walls structures



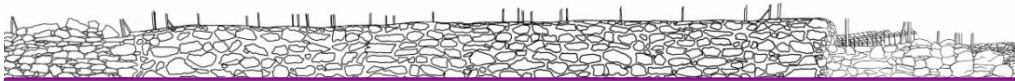




# ARNAD VINEYARD TERRACED LANDSCAPE







## Technic Cambisol (Escalic)

**ARNAD I**  
**12 years old**  
**vineyards**

**PERGOLA-SHAPED**







NAPEA

Nouvelles Approches sur les Prairies dans l'Environnement Alpin

## **Soil evolution after land-reshaping in mountains areas (Aosta Valley, NW Italy)**

While the economical a benefits of soil restoration are clearly defined, expecially considering the amelioration of agricultural mechanization, potential negative effects can be observed, too, in a wide range of soil properties and at different time scales



- Land reshaping
- Manufactured soils





Contents lists available at SciVerse ScienceDirect

## Quaternary International

journal homepage: [www.elsevier.com/locate/quaint](http://www.elsevier.com/locate/quaint)



### Properties, best management practices and conservation of terraced soils in Southern Europe (from Mediterranean areas to the Alps): A review

S. Stanchi<sup>a,d,\*</sup>, M. Freppaz<sup>a,d</sup>, A. Agnelli<sup>b</sup>, T. Reinsch<sup>c</sup>, E. Zanini<sup>a,d</sup>

<sup>a</sup> *Università di Torino, DIVAPRA Chimica Agraria e Pedologia, Via L. Da Vinci 44, 10095 Grugliasco (TO), Italy*

<sup>b</sup> *Università degli Studi di Perugia, Dipartimento di Scienze Agrarie ed Ambientali, Borgo XX Giugno 72, 06121 Perugia, Italy*

<sup>c</sup> *National Soil Survey Center, USDA-NRCS, 100 Centennial Mall North, Lincoln, NE 68508, USA*

<sup>d</sup> *NATRISK – Research Centre on Natural Risks in Mountain and Hilly Environments, Via L. Da Vinci 44, 10095 Grugliasco (TO), Italy*

# Mountain Research Station Angelo Mosso

Elevation: 2901 m ASL

MAAT: -2.7°C

MAP: ~ 1200 mm

