

Promoting Sustainable Farming in Mountain Region

Turin, Ormea, Italy
July 8-18, 2014
Organized By:



Bheem Raj Rai
Program Coordinator for Conservation and Livelihood
The Mountain Institute

NEPAL FACTS



- Population: 29.3 million
- \$440 annual per capita income
- Ranks 163 out of 177 with a 48.6% literacy rate
- The 15th poorest country in the world
- Emerging from a 10-year civil war with fragile peace process

The Mountain Institute



an international non-governmental organization committed to conserving mountain environments, empowering mountain communities, and sustaining mountain cultures around the world

The Mountain Institute's Program in Nepal



Rural Roads, Humla



Food for Enterprise, Mugu



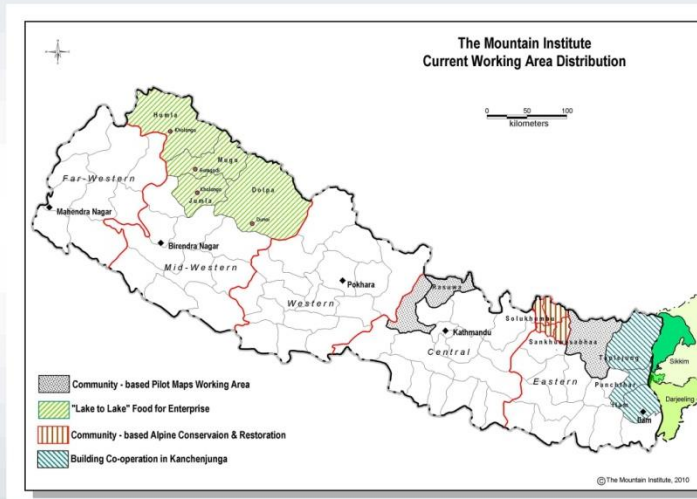
Sacred Sites, Khumbu



Alpine Conservation, Mera



Food for Enterprise, Upper Dolpa



MAPs Cultivation, Dhading



Community Consultation, Jumla



Village Enterprises, Khotang

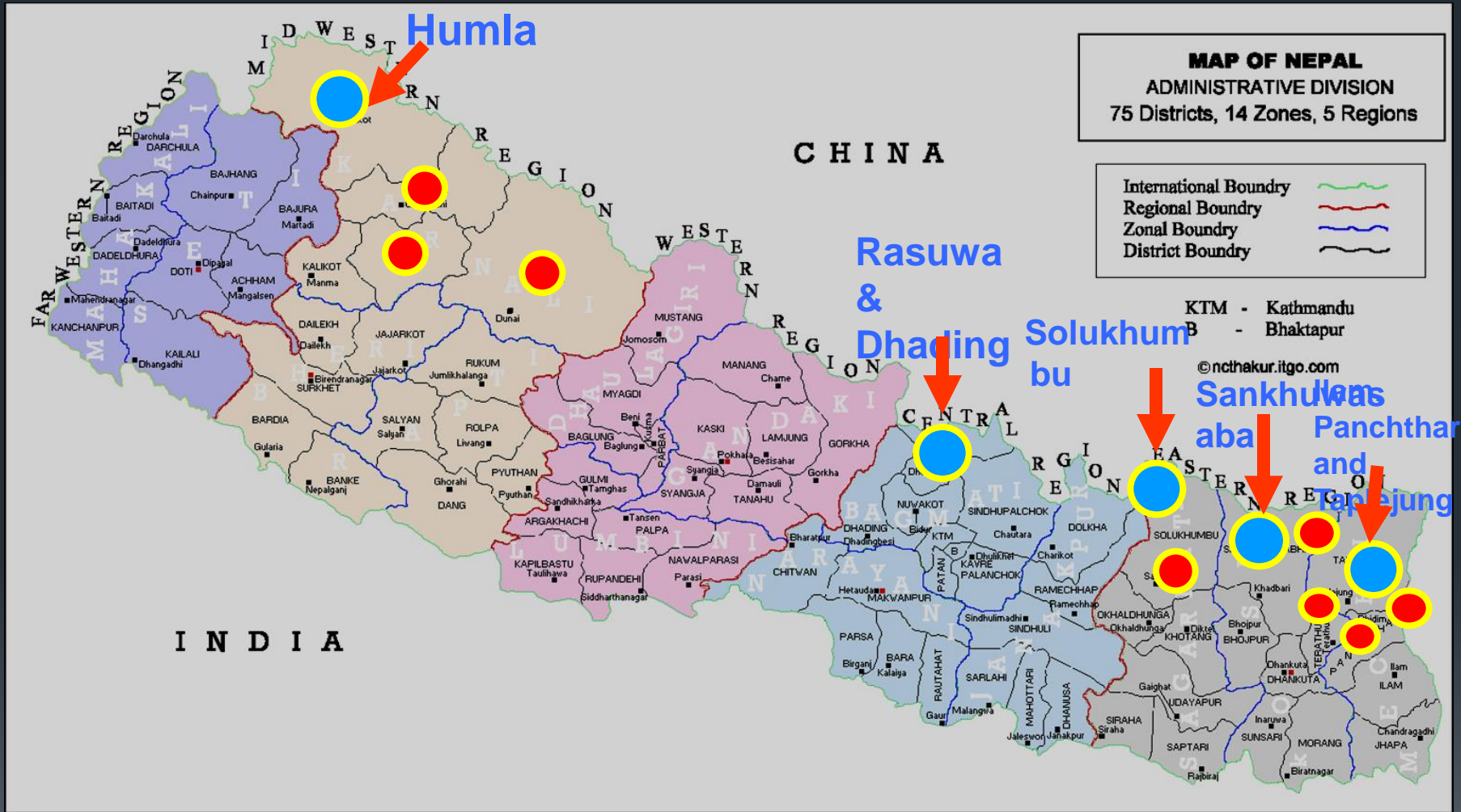


Medicinal Plants, Bhotkhola



Livestock Improvements, Ilam

TMI Program Sites in Nepal



● Current Projects
 ● Past Projects

TMI working in Humla



- Humla District is a district of Karnali Zone
- Simikot is the administrative headquarters of Humla district
- It is situated in Mid-Western Development Region of Nepal
- It is part of Karnali Zone and is one of the seventy-five districts of Nepal
- The district covers an area of 5,655 km² and has a population of 40,595 (2001)
- Buddhists inhabit the Northern part of HUMLA District whereas in the Southern part mostly Hindus are living

SIMIKOT AIRPORT 9,246 FT (2,818M)



Food For Work: WFP Funded Project

- Occupies 15% area of total country
- 45 % of area lies above 4500 meter altitude, 16.3 % area is suitable for agriculture production
- Low per capita income (\$ 186)
- Low literacy rate (27.09)
- Malnutrition
- Food scarcity (1018 cal/ day half of 2200 cal/day)



THE MOUNTAIN INSTITUTE'S LAKE TO LAKE: FOOD FOR ENTERPRISE PROGRAMS MID-WEST NEPAL



544 hectore of land irrigated



9.7 Km road constructed



14 hectors of wild terrace improved for farming



1 Monastic support provided



67 wooden bridge constructed



16 MAPs nursery established



256 Km of trail constructed



114 school support provided



18 Improved Water Mill constructed



28 Community buildings constructed



8 models of Non-formal Education provided to each household



1 community pond constructed

Objectives

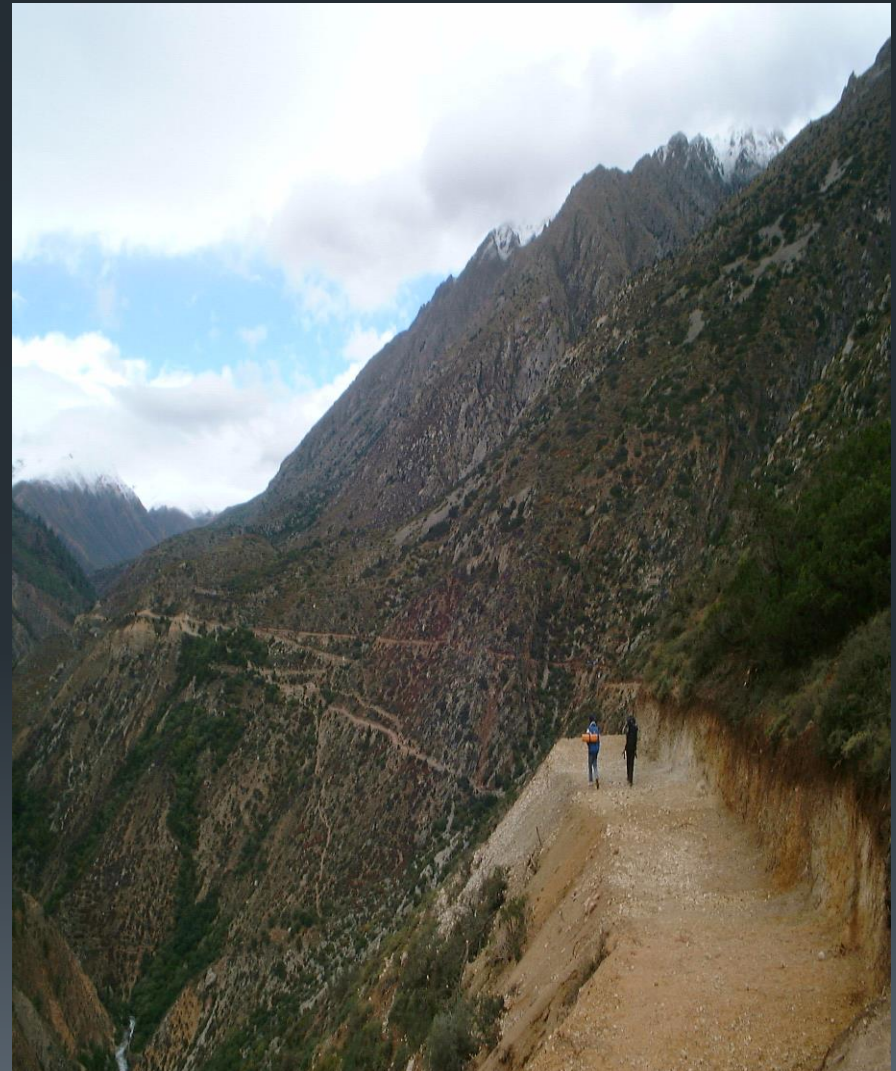
- Increase food security of vulnerable communities through direct aid
- Increase livelihood security of vulnerable communities through sustainable enterprise development and empowerment
- Increase community organizational and technical capacity
- Replicate successful enterprise and conservation models from TMI's work sites in East Nepal



- Site selection for Projects (MAPs, Orchard and Food production)
- Community Participation
- Public Audit at project site

Rural Community Infrastructure Work

- **Support to Short-term Food security of upper Humla**
- **Building Ownership of road transportation**
- **Backbone of ‘Access’ and ‘Development’**



CLIMATE CHANGE AND ADAPTATION IN HUMLA DISTRICT

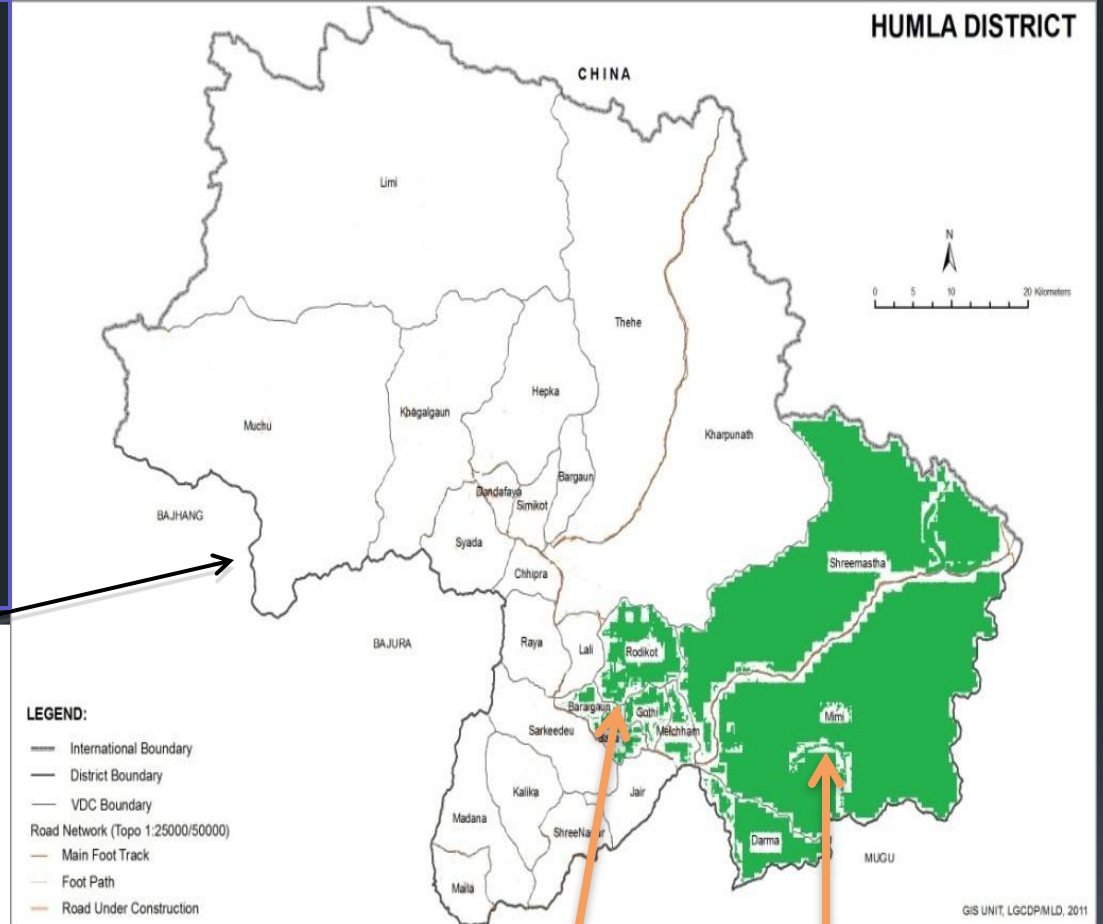
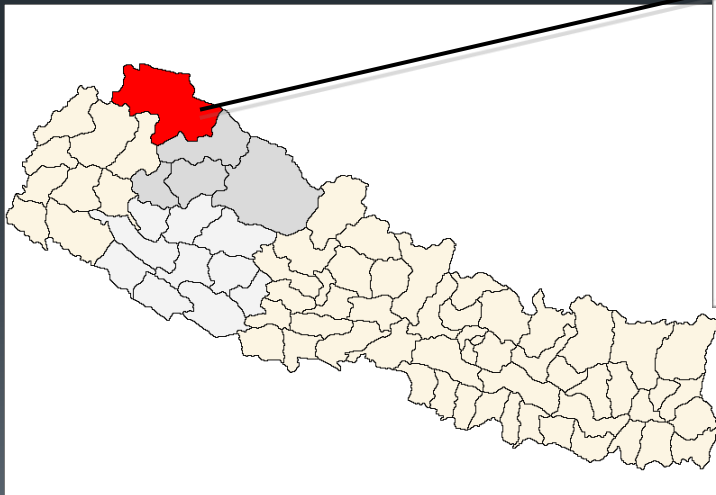
8 VDCs of) out of 27

1. Rodikot Watershed:

Barai, Saya, Gothi and Rodikot

2. Darma Watershed

Melchham, Shreemastha, Mimi and Darma southern Humla (2 Watershed Areas)



Rodikot

Darma

Major Projects Implemented under this Project

Adaptation measure :

- agro-based support – irrigation canal rehabilitation, agriculture land improvement
- Training on cultivation of Medicinal and Aromatic Plants (MAPs) and climate change adaptation awareness
- supporting the preparation of 8 Community Adaptation Plan of Action (CAPA)
- Seed and sapling distribution of MAPs and
- Apple farming that will lead to improvements in the livelihoods of this region in Humla



ACCOMPLISHED ACTIVITIES

- 8 Community Adaptation Plan of Action (CAPA has been prepared
- Supported agro-based infrastructure and land slide control
 - irrigation canal rehabilitated
 - agricultural land improved



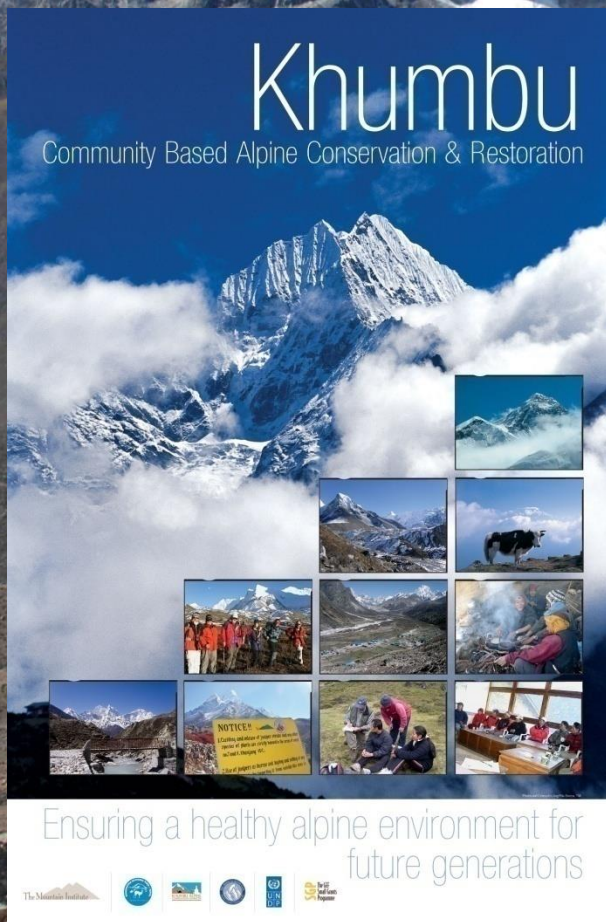
PROJECT APPROACH



- Working through Partnership with Local NGOs
- Bottom up planning and with community based participatory
- District level information sharing meeting among stakeholders
- Field exercise and project selection
- Implementation through users committee and project hand over



Community-based alpine conservation and restoration in Mt Everest Ecosystems

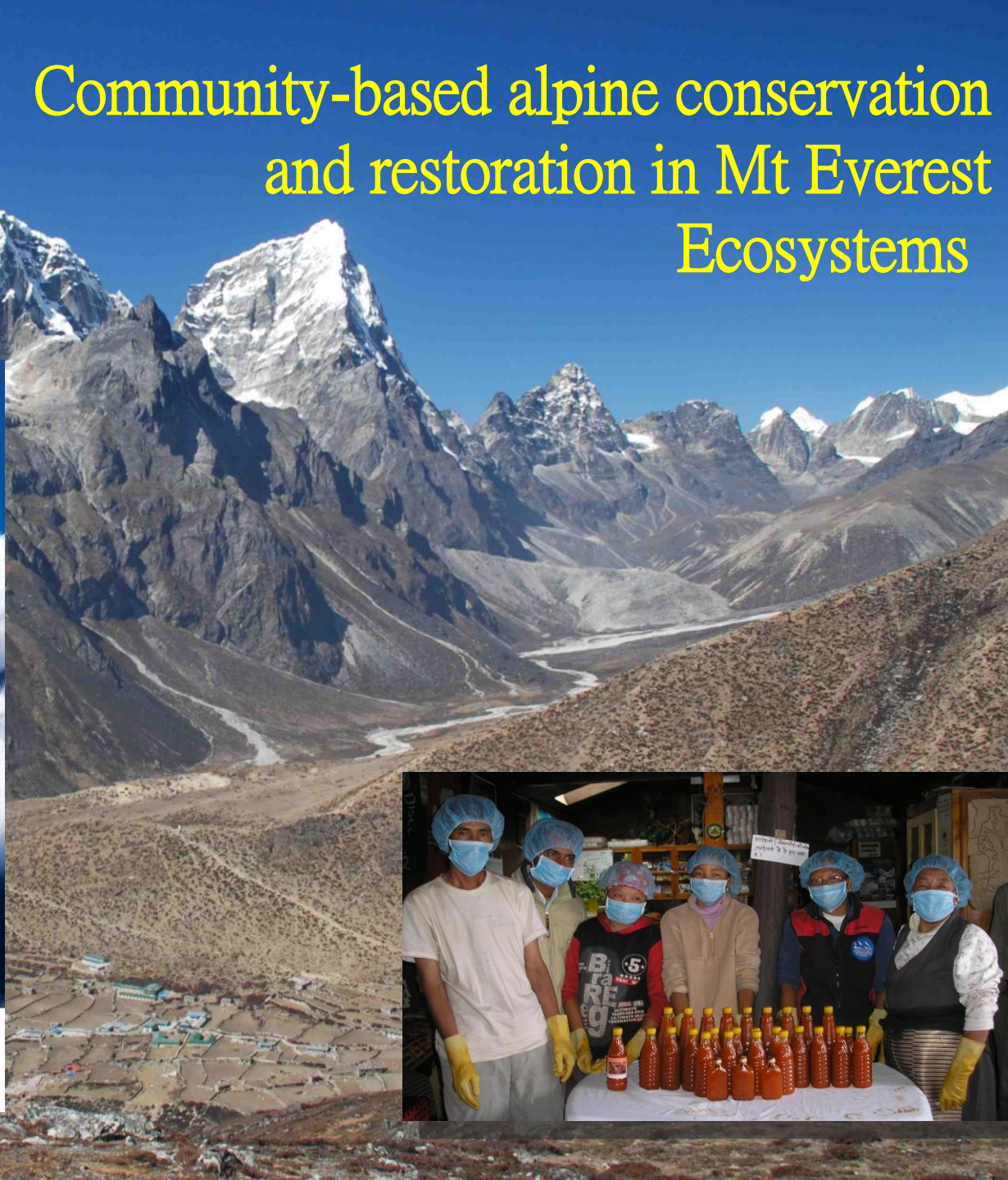


Khumbu
Community Based Alpine Conservation & Restoration

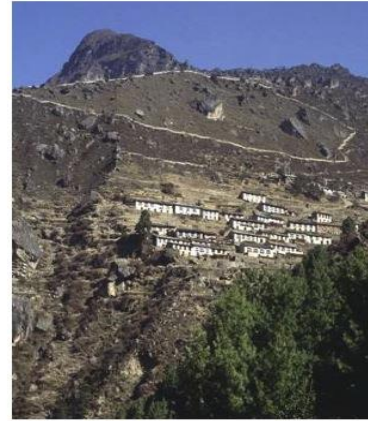
Ensuring a healthy alpine environment for future generations

The Mountain Institute, UN Women, UNICEF, UNEP, UNFPA, UNHCR, UN Women, UNICEF, UNEP, UNFPA, UNHCR

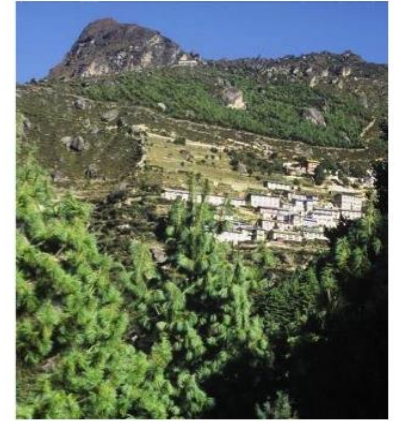
The poster features a large image of a snow-capped mountain peak. Below it is a grid of smaller images showing various alpine scenes: a cow, a person, a group of people, a person working, a person sitting, and a person standing. A 'NOTICE' sign is also visible in the grid. At the bottom, there are logos for The Mountain Institute and several UN agencies.



CONSERVATION



1990



2006

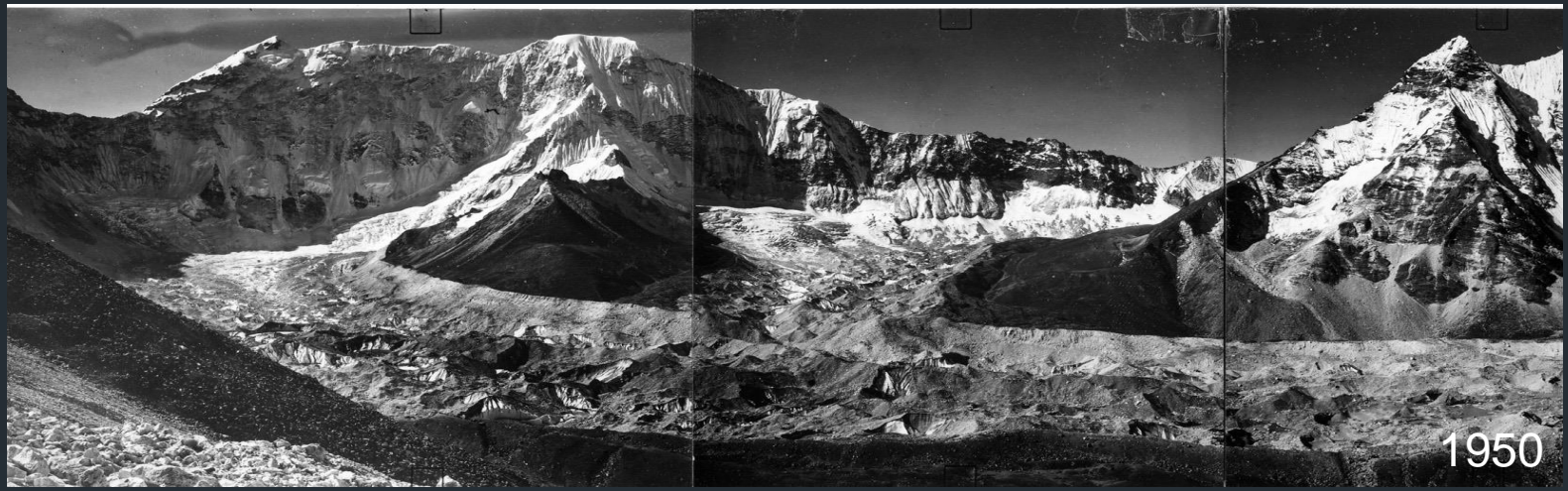
Namche Bazaar. The first glimpse of the town as one nears the top of the Namche Hill track.
Note the growth over 16 years of the trees in foreground and Namche West plantation behind.



The KACC established an alpine nursery of approximately 100,000 juniper, fir and other alpine species and Medicinal and Aromatic Plants at 4000 m asl in ALPINE ZONE

Climate Change and Adaptation





COMMUNITY CONSULTATION WITH STAKEHOLDERS



Climate Change Awareness in Khumbu: Sharing findings with stakeholders from Khumbu in Kathmandu and Solu Salleri



THANK YOU