

Promoting Sustainable Farming in Mountain Region



IPROMO

7-18 July 2014

Ormea (Italy)

Mountain Environment Protection Society (MEPS)

Leila Sotoudeh

Background

- Bachelor's in Environmental Engineering (Natural Resources)
- Master's in Environmental Planning and Management
- Project Management
- Sustainability Management

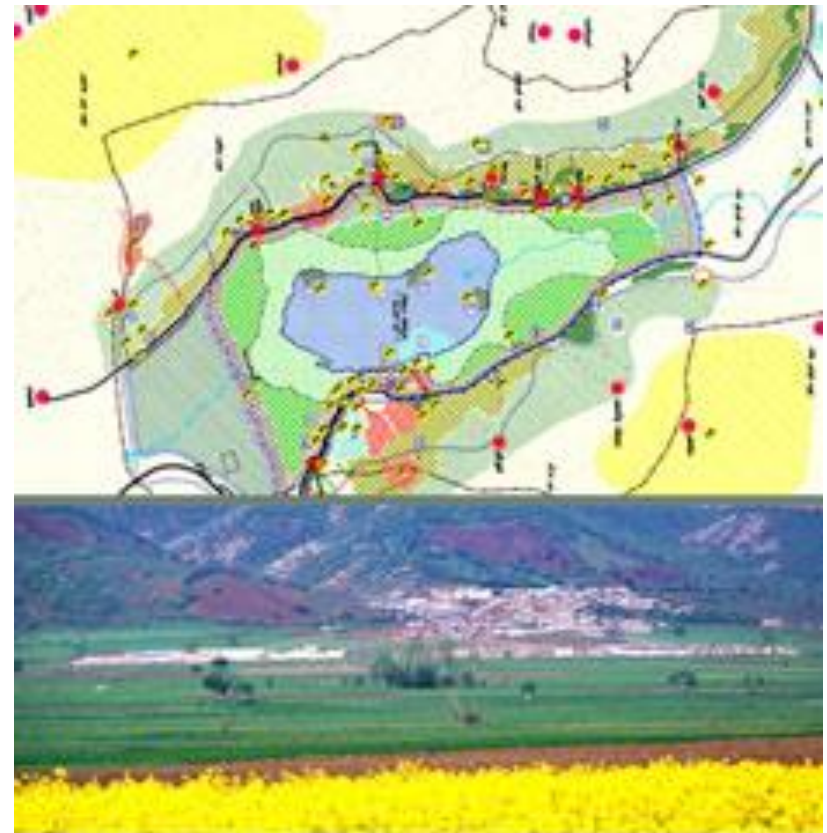
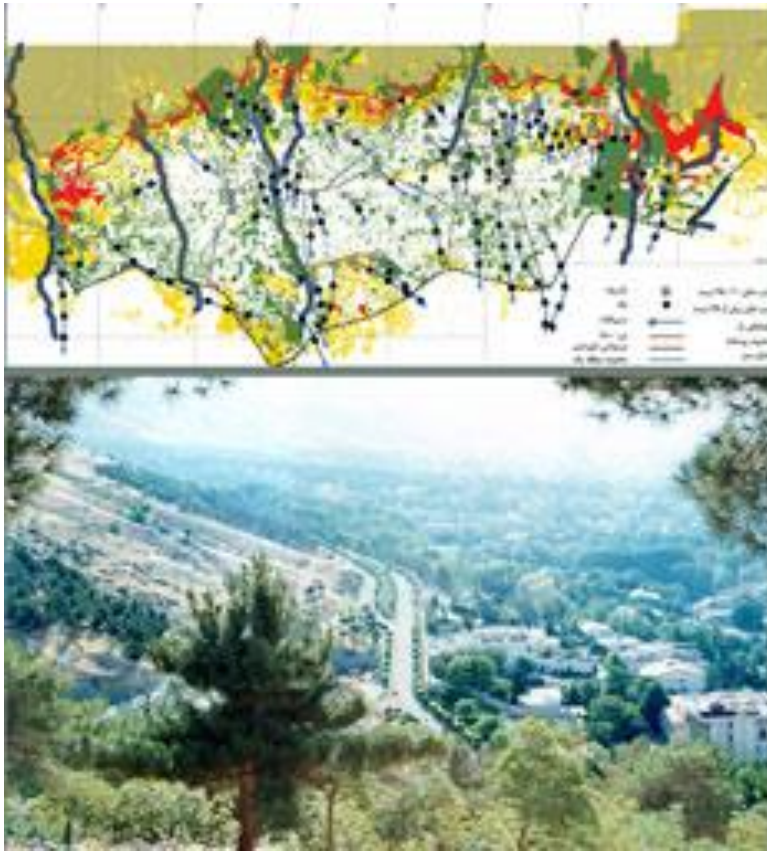
Research

- Highlands-lowlands Ecological dependencies (Tehran- Alborz Mountains)
- Analysis of land capability and structural - functional development of landscape structure to obtain a sustainable development plan for Iranian plateau (Binaloud Mountains- North-West of Iran)

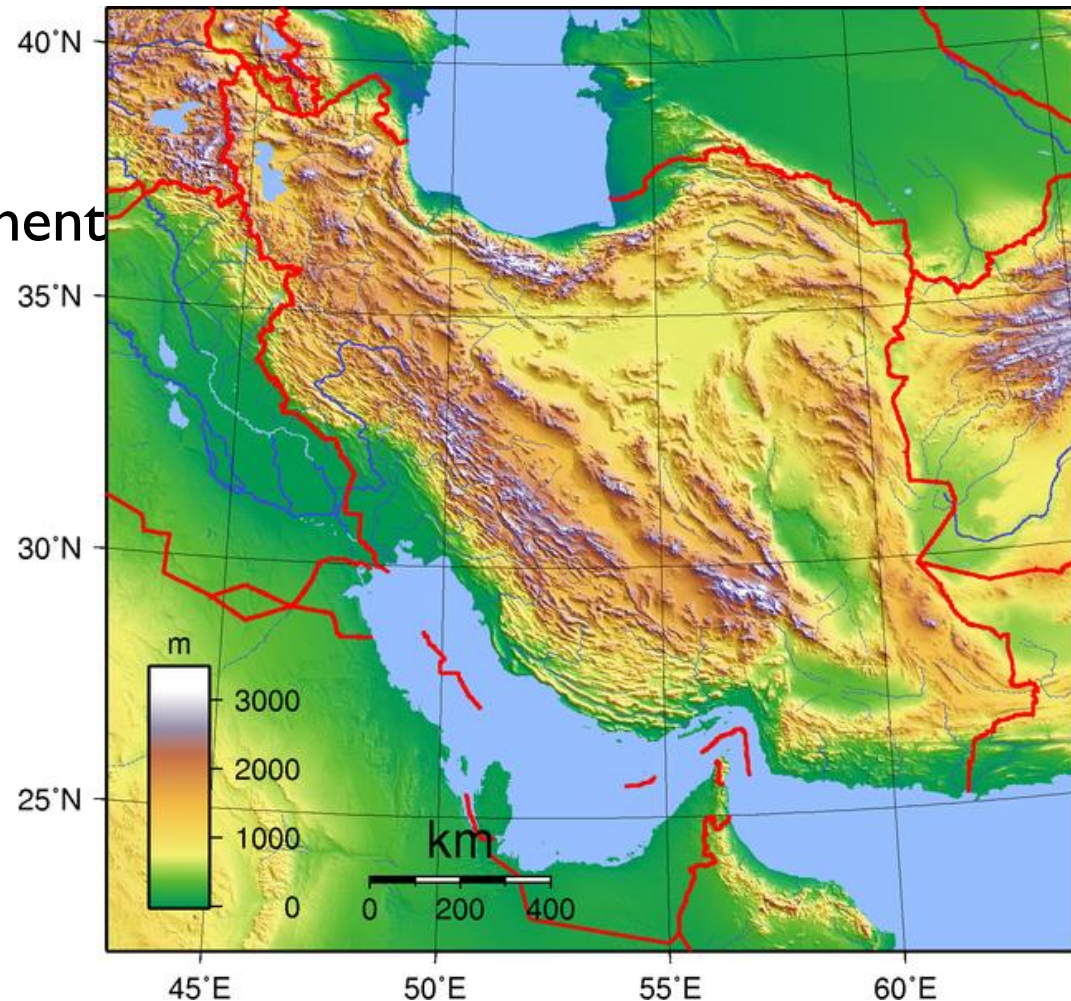
Purpose: to find convenient ways to manage land use and natural resources in Iranian plateau where aridity is a dominant significant factor

- landscape ecology's concepts at the watershed scale
- GIS and RS

- Tourism planning in mountainous areas
- Urban-Environmental design of valleys in mountains



- Iran is a mountainous Country
- 53% is at altitudes between 1000 –2000 m
- 16% is above 2000 m
- Damavand with 5670 m is the highest in west Asia and Europe
- 85% arid, semi-arid or hyper arid environment



Mountain Environment Protection Society (MEPS)

- Was established as an NGO in Tehran, Iran in 1993 by a group of mountaineers and nature lovers
- Initiate and conduct tree planting and clean-up projects in mountains since 1994
- Committed to conservation and sustainable mountain development
- Focused on awareness raising and capacity building

Family farming

- Alternative pasture management methods for the protection of endemic plant species in Agro-Pastoral societies



- Conservation of mountain ecosystem through local communities participation



- Integrated natural resources management through local communities empowerment



- Empowerment of mountain community by introducing alternative livelihood opportunities



Mountain communities

- **Training workshops for herders, farmers ,...**
- **Discussion sessions**
 - who:* stakeholders, regional policy and decision makers and local community
 - About:* issues, policies and regulations, traditional knowledge, Possible solutions
- **Training sessions for children and youth**
- **Pilot sites selection in the highland pastures for pasture establishment**
- **low-yield rain-fed wheat or oat farms conversion to fodder cultivation as alternative cultivation**

Thank you

