



## **GEF PROJECT - ID 5135**

**“Protecting Biodiversity and Multiple Ecosystem Services in Biological Mountain Corridors in Chile’s Mediterranean Ecosystem”.**



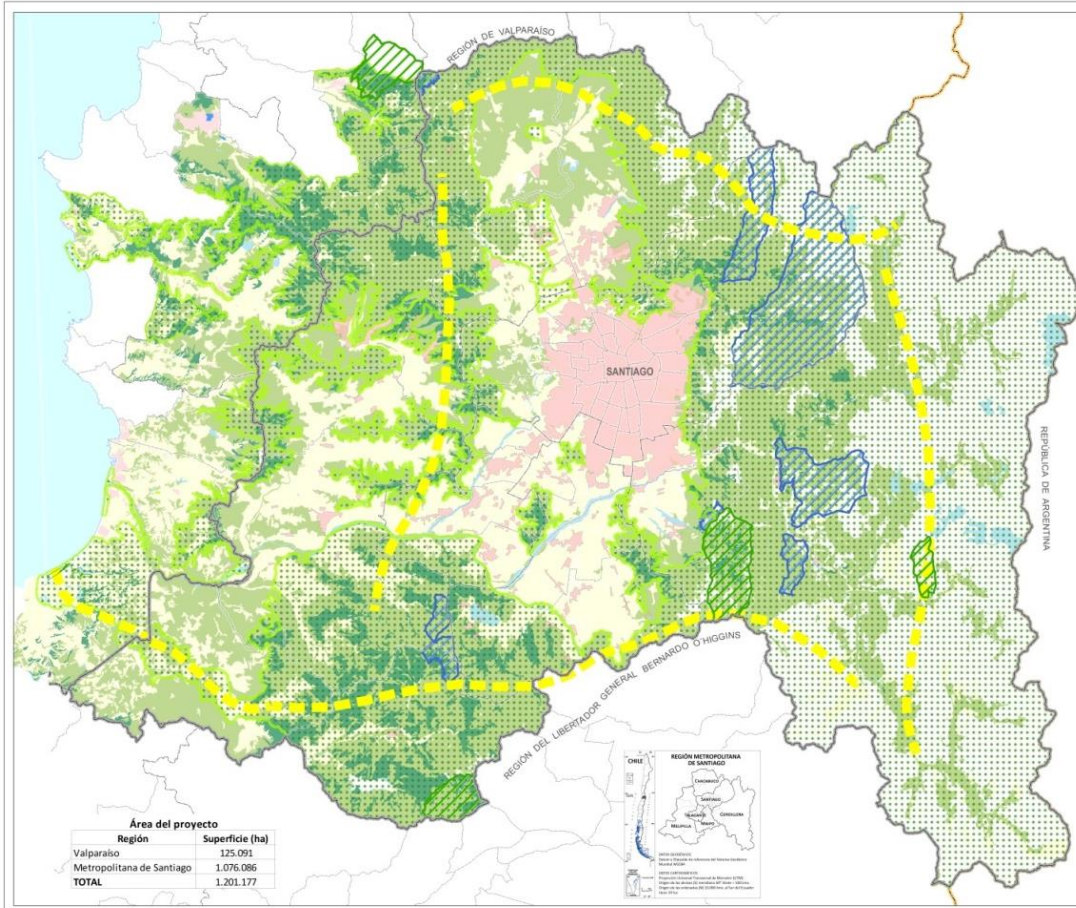
## GEF PROJECT AIM

**Designing public and private activities for knowledge management in biodiversity and ecosystem services in Mediterranean mountain ecosystems, along with the mainstreaming in productive activities for rural mountainous areas.**



# PROJECT AREA

- Central Zone of Chile. 36 municipalities involved
- Total Area: 1,200,000 ha aprox.



*Protecting Biodiversity and Multiple Ecosystem Services in Biological Mountain Corridors in Chile's Mediterranean Ecosystem*



# Why it is important to conserve?



## Reasons:

- ✓ Hotspots of biodiversity “Chilean Matorral”. Semi-arid ecosystem
- ✓ This zone concentrate up to 50% of the country’s population.
- ✓ The hydrologic regime comes mainly (60%) from snow and glaciers.
- ✓ Mountains provide 90% of drinkable water for Santiago and irrigation for agriculture.
- ✓ Vulnerable to climate change effects 15-25% water reduction estimated by 2050.

# PROJECT'S COMPONENTS

## Component 1:

Developing capabilities in local environmental governance and knowledge management in biodiversity conservation and sustainable use land.

## Component 2:

Implementation and promotion of good practices for the landscape sustainable management helping to the biodiversity and ecosystem services conservation.

## Component 3:

Implementation of a Integrated Distrital Plan for the conservation of soil, water and forest into a large scale pilot site.



# Good practices for managing livestock in the Chilean Mediterranean Mountains

## Component 1

The graziers incorporate in their management **valuable knowledge in** forest, soil and biodiversity conservation.

**information collected** will allow the development of a **mountain land use planning** with recommendations of uses

## Component 2

Land management plans with actions to promote **good practices in livestock breeding**

**Standards of good practice for mountain** such as reducing the carrying capacity of cattle on grasslands and practicing rotational grazing.

## GOAL

Through training, education and awareness programs will improve capabilities of traditional graziers and will empowering them on the necessity to conserve biodiversity and ecosystem services

**Conservation District** will contribute to the sustainability of the territory and will be implemented with the **participation of graziers**

## Component 3

The Conservation District will activate **subsidies from the State for productive development** on livestock breeding



We need to solve environmental conflicts graziers-wildlife (puma attacks)  
Improve awareness about the impacts on hunting of protected species.



Reduce pressures  
over Guanaco  
(*Lama guanicoe*)

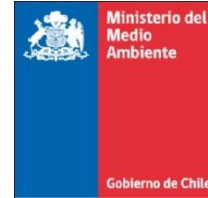


Reconstitute the natural food  
chain in the mountain corridors

Develop tourism around to the  
Guanaco as an alternative  
income.







## GEF PROJECT

# “Protecting Biodiversity and Multiple Ecosystem Services in Biological Mountain Corridors in Chile’s Mediterranean Ecosystem”.

### Team:

**Dr. Jaime Rovira.** Project Director. [jrovira.rm@mma.gob.cl](mailto:jrovira.rm@mma.gob.cl)

**M.Sc. Makarena Roa.** Local Environmental Management. [makarena.roa@senderodechile.cl](mailto:makarena.roa@senderodechile.cl)

**M.Sc. Marianne Katunaric.** Biodiversity. [marianne.katunaric@senderodechile.cl](mailto:marianne.katunaric@senderodechile.cl)