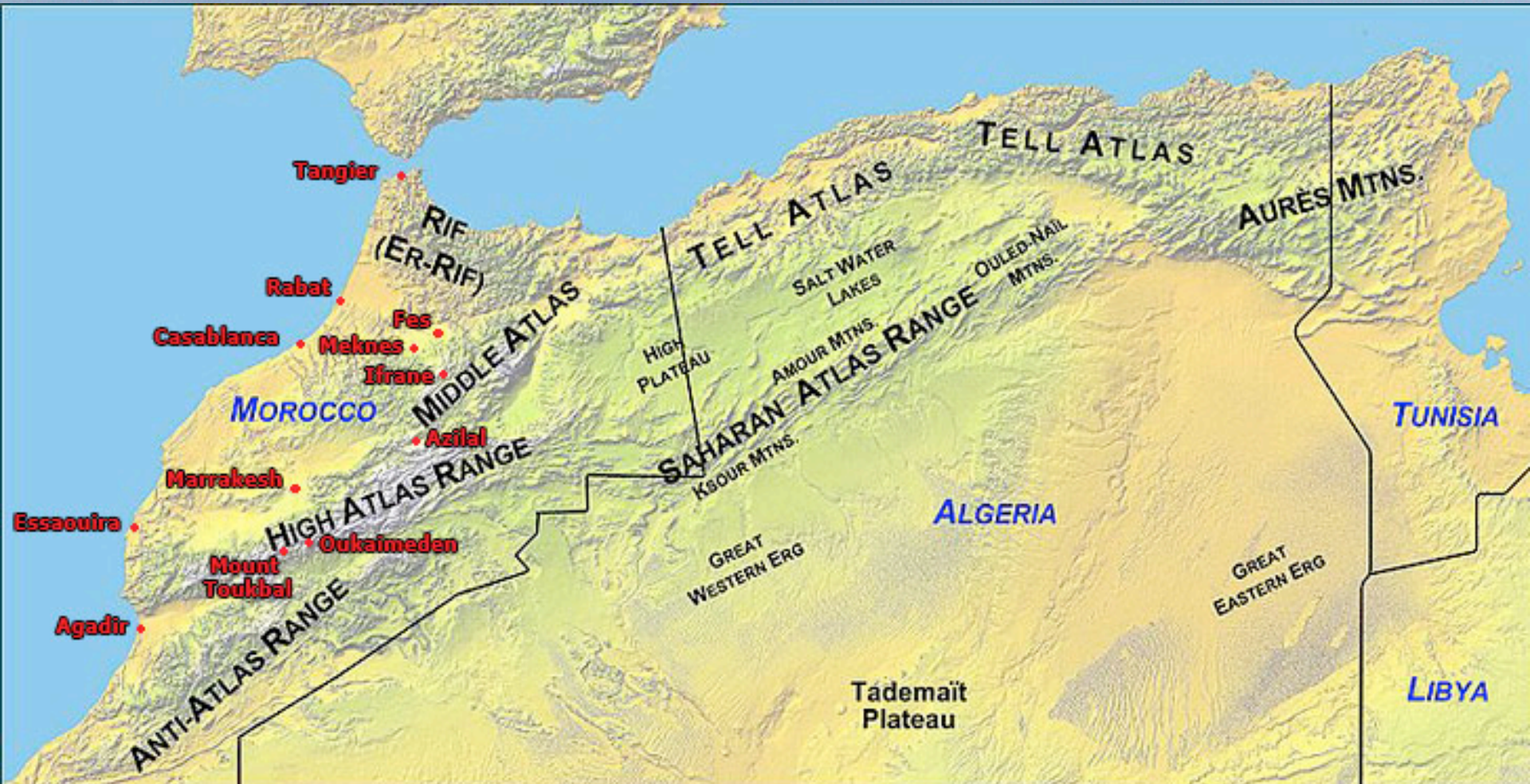


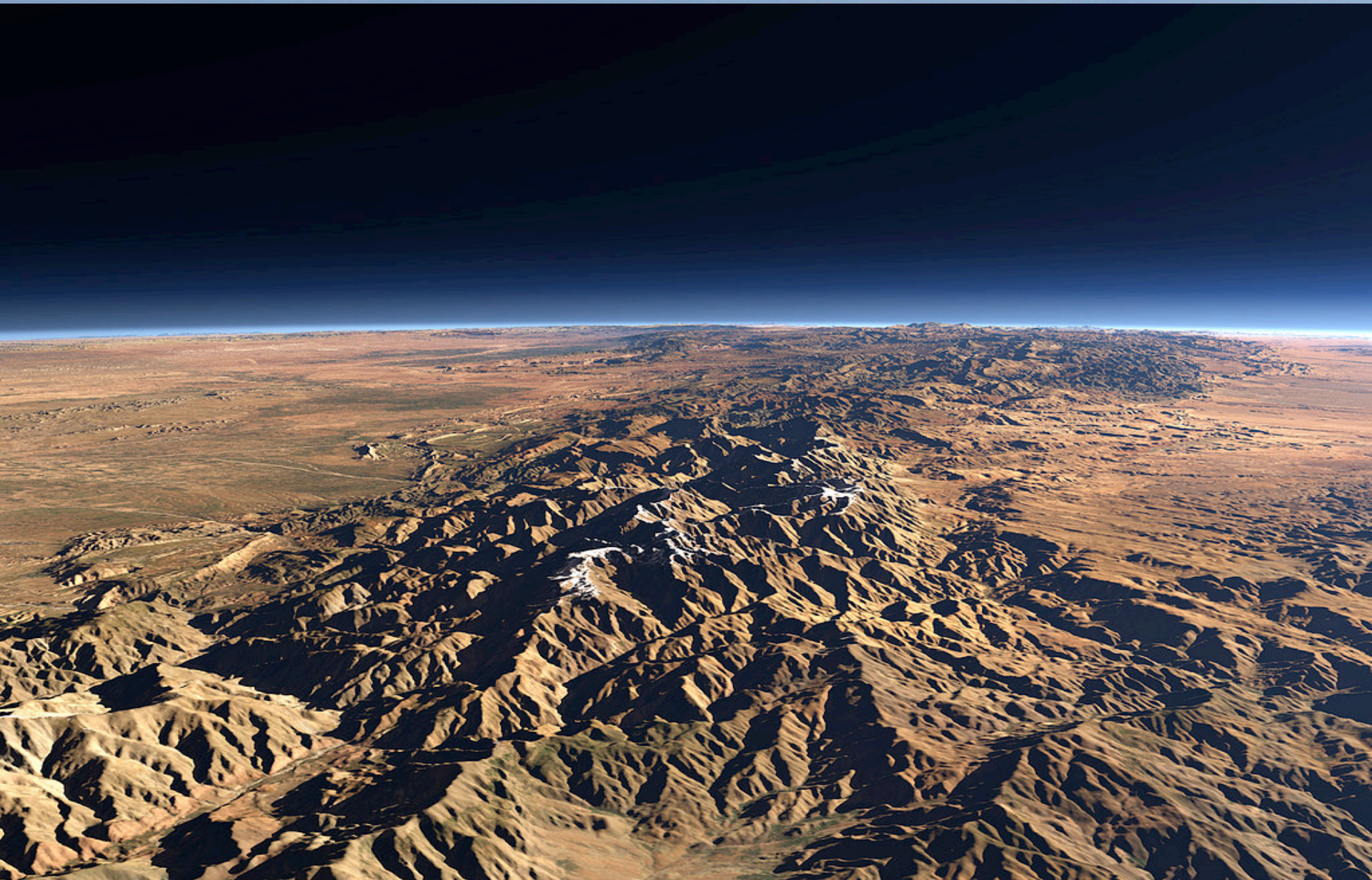
MOUNTAIN HABITAT MOROCCO M.H.M.



Atlas mountains, Morocco



Atlas mountains, Morocco



Context

- Topography and climate: wide diversity scale
 - From 0 to > 4000 m
 - Strong erosion
 - Mediterranean, temperate, arid, semi-arid, high-mountain
- Agriculture range
 - Wide fields → terrace crops
 - International export → grow to survive
- Road access & safety
 - Dead-end valleys, strong erosion, natural bed rivers → high risk

Atlas mountains, Morocco



Atlas mountains, Morocco



Atlas mountains, Morocco



Context

- Social landscape
 - Ancestral culture vs. new electricity, TV & plastic
 - Small communities/villages – low communication
 - Common problem → no grouped organization
 - Strong gender segregation
 - Very low education
- Tourism
 - Strong pressure in some regions
 - Far from sustainable

Mountain Habitat Morocco

Integrated sustainable development project

An on-field lab for the Atlas

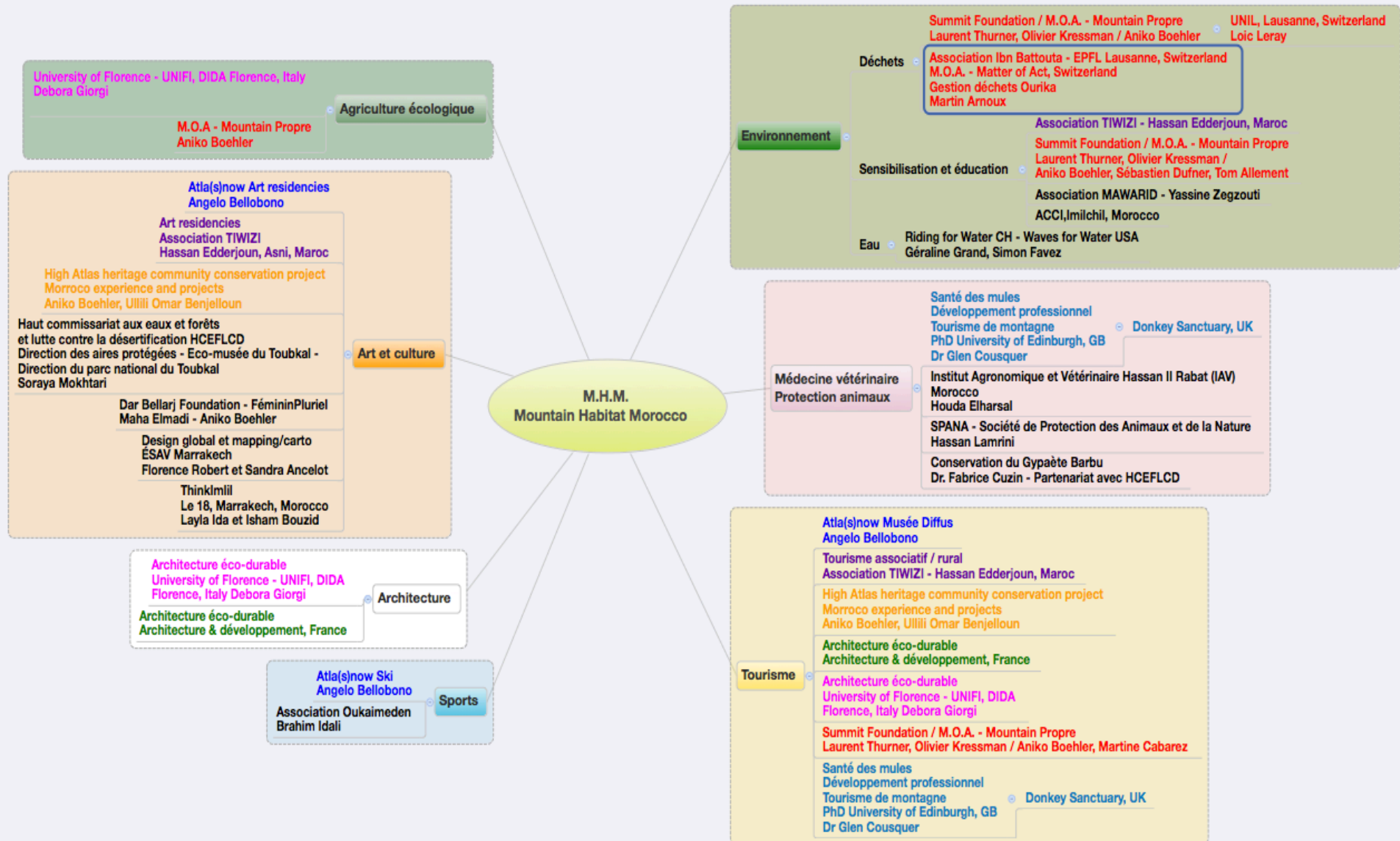
- Multi fields competencies emulation
- Constant interaction with evolving local needs
- Bringing people together for their region
- Pilot phase !



The projects



The projects



M.H.M. aims to...

Global visibility and transparency

Action coordination

Multi-parties partnerships working base

Ensure good-use of money

Assess, and respect all different needs

Quality monitoring and evaluation

Solid environmental scientific team, experience and partners

Solid socio-economic scientific team, experience and partners

Solid communication team, experience and partners

Next short term steps

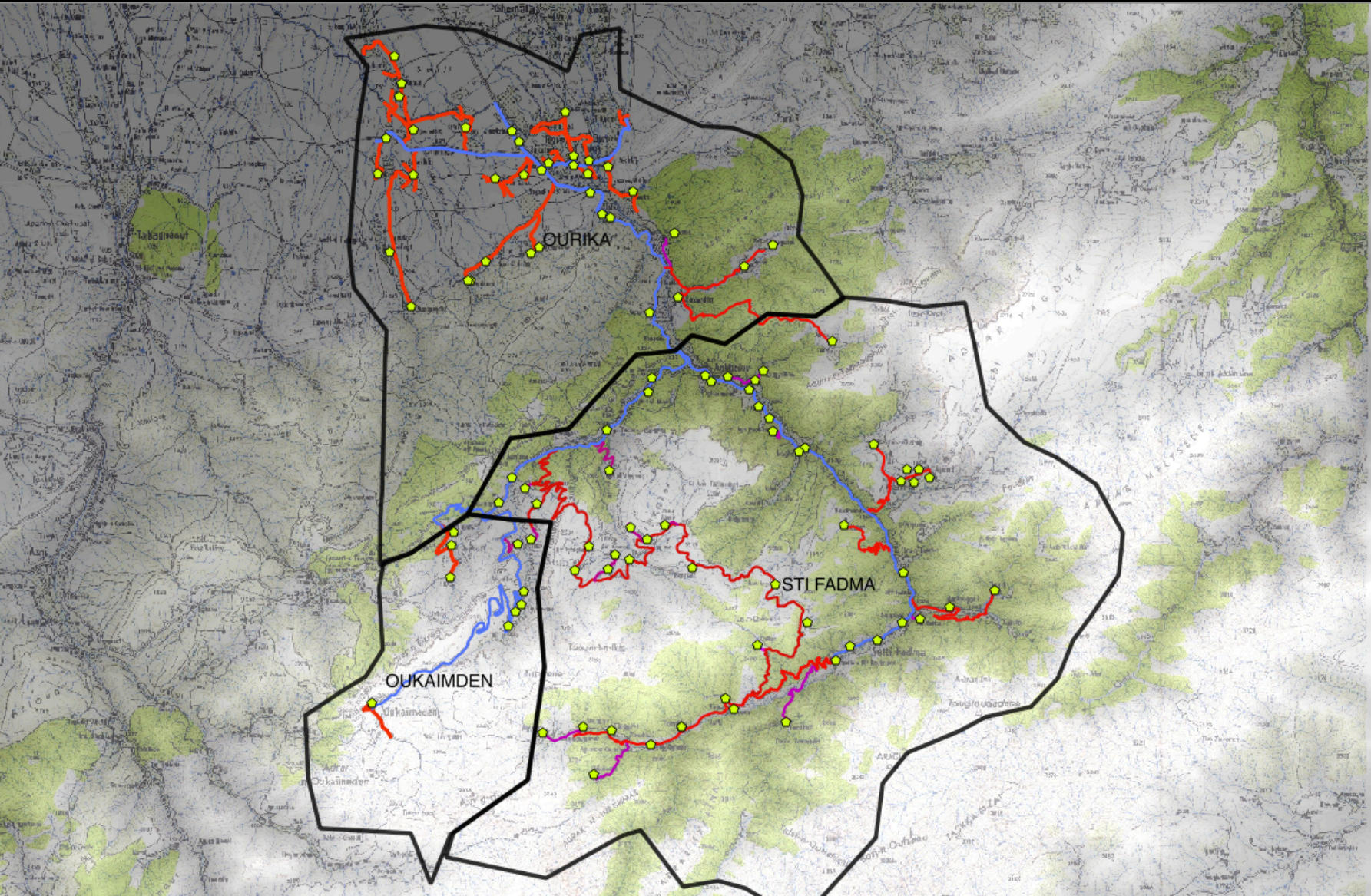
- Regroup interested and engaged external actors
 - International/national partners !
- Open a *Mountain Wilderness* chapter in Morocco (Sept. 2015) That will host M.H.M project



On-field project I mainly work on

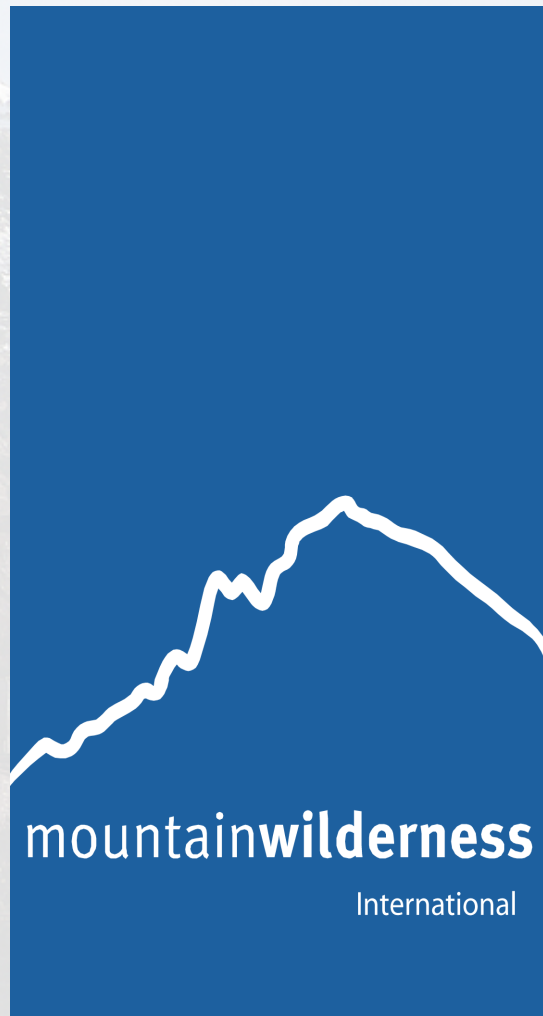
Designing and implementing a **household solid waste collecting system/management** in
“Ourika valley, Tensift-Al-Haouz, Morocco”

- Critical sanitary / environmental hazard
 - Wastes everywhere, new diseases, strong water pollution
- Participatory work, population involved
 - 60'000 people to “connect” and raise awareness
- Coupled with environmental education campaign
 - Each village, schools, market places, mosques, local authorities, roads
- Designed to be sustainable “as much as possible”
- Pilot model in Morocco → future national extend ?



Thank you !

Partners we work with



Atlas(S)now

Association Ibn Battouta pour le développement et la culture