

Personal Presentation

Name: Arun Belbase

Affiliation: WWF Nepal

E-mail: arunbelbase7@gmail.com



IPROMO

*Managing mountain resources and diversities:
the role of protected areas*

Ormea 8-18 July 2016

Education

- ***MSc* in Environmental Science from Utarakhand Technical University, Deheradun, India, 2013**
- ***BSc* in Environmental Science from Tribhuwan University , Kathmandu, Nepal, 2011**

Published Technical Report

- Local Adaptation plan of Action to reduce Climate Change Impact of 2 VDC at Jajarkot District submitted to MOSTE.
- Initial Environment Examination study of Ghormu Khola, Siraha District submitted to MOSTE.

MSc Dessertation

- Wetland Mapping of Nepal using Remotely sense data and GIS submitted to Wildlife Institute of India

Employment and Main Activities

- **Program Associate: Hariyo Ban Program, WWF Nepal, Langtang National Park, SHL Office, Dhunche, Rasuwa**

Responsibilities and/or achievements

Planning, Implementing and Reporting Green Recovery and Reconstruction tools at Rasuwa, Langtang National Park buffer area, Monitoring Program Activities, Coordination with Grantee.

- **LAPA officer: LIBIRD, NGO from 30th December 2013 to 15th March 2014, Climate Change and Adaptation Unit.**

Responsibilities and/or achievements.

Vulnerability, Sensitivity and Adaptive capacity Analysis, GIS Mapping of District, roads, River, Preparing Social Map, Sensitizing about Climate Change, Preparing budget plan of selected VDC, Coordination with UNDP, NCCSP, DDC, LIBIRD.

- **Researcher : Wildlife Institute of India, WII, Dehradun, India, MOEF**

Responsibilities and/or achievements.

Working with Satellite Images, Layer stacking and Mosaicking images, Image Classification, Spatial Data Analysis in GIS, Models Calculation, Field Survey and Desktop Mapping, Delineating Water Bodies of Nepal etc.

Other interests (volunteer work, hobbies etc.)

Volunteer Work

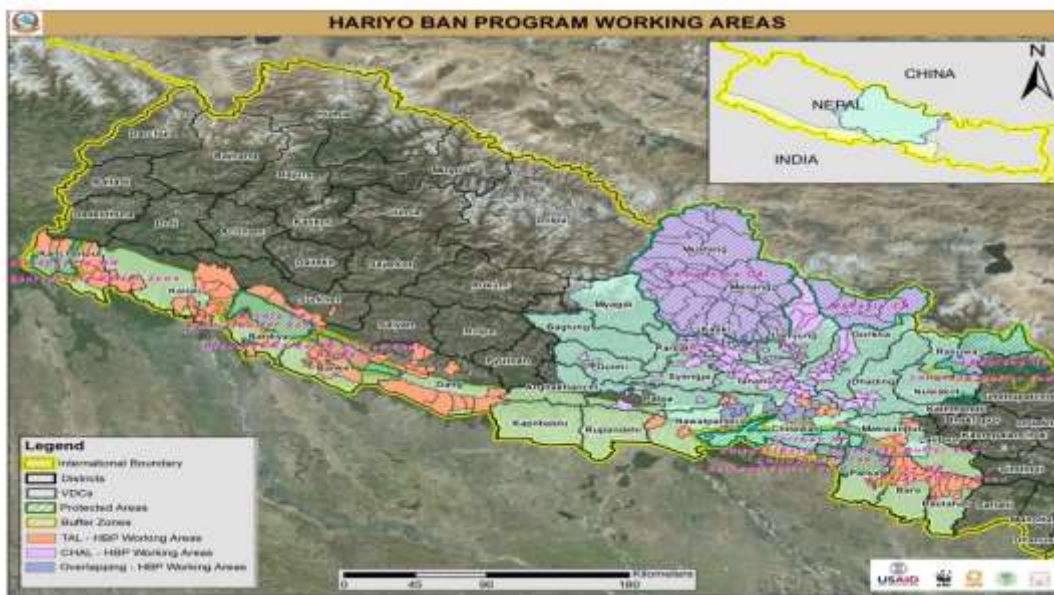
- Centre for Science and Environment, Delhi, India Industry and Environment Unit.
- Essay competition of climate change organized by Lead Nepal NGO
- Hariyo Ban Program on Human Wildlife Conflict, WWF Nepal, TAL-PABZ
- Remote sensing and GIS, Wildlife Institute of India, Dehradun, India
- Red Panda Monitoring work at WWF Nepal
- Prey Base Occupancy Survey at Bardia National Park, WWF Nepal
- Social and Environmental Survey at NESS NGO, Nepal

Hobbies

- Football, Chess, Volleyball
- Music, Guitar and Poetry
- Swimming and Travelling
- Climbing, Hiking and Exploring
- Wildlife Photography

Project In Mountain Area, WWF Nepal

- Hariyo Ban Program
- Langtang National Park
- Major species, Red Panda, Snow leopard etc
- Ethnicity, Tamang, Serpa, Bhote
- Langtang Larix, Rododendron
- Helambu, Langtang, Gosaikunda Tourist Trail
- Working with BZUC, BZUG, CBAPU, CFUG and Eco club In Langtang

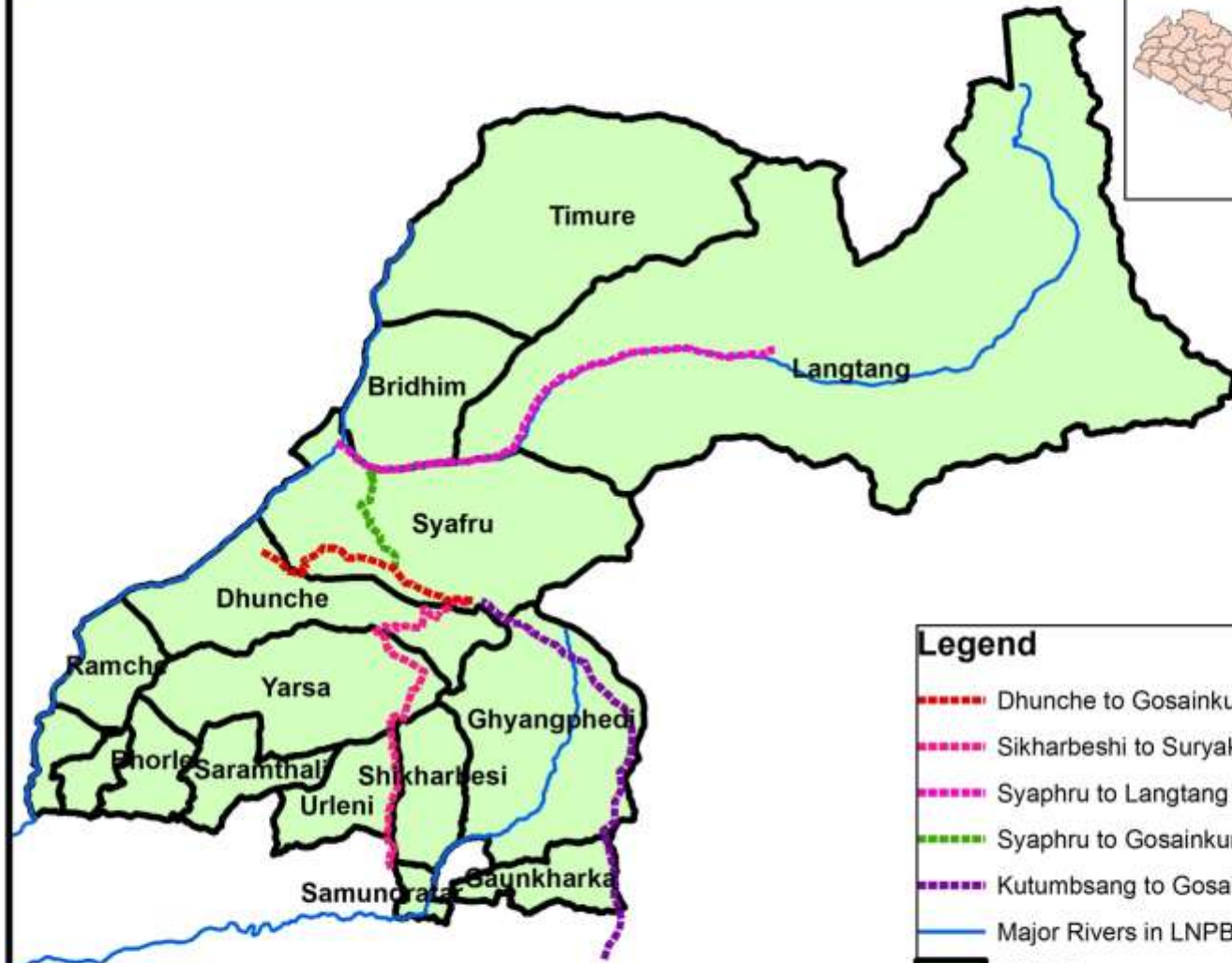




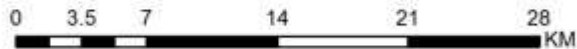
Langtang valley before and after earthquake destroy



Propose Trail Improvement Route in LNPBZ under HBP Recovery Program



- Legend**
- Dhunche to Gosainkunda Trail
 - Sikharbesi to Suryakunda Trail
 - Syafru to Langtang Trail
 - Syafru to Gosainkunda Trail
 - Kutumbsang to Gosainkunda Trail
 - Major Rivers in LNPBZ
 - LNPBZ



Langtang Memorial Park and Tourist Trail

- Memorial park establishment at Langtang in coordination with BZUC People



Way Forward

- Modern technology such as Remote sensing, GIS and Aerial photo for current monitoring of land cover of Protected areas.
- Change detection method for planning and monitoring.



Thank You