

# **IPROMO**

*Managing mountain resources and diversities:  
the role of protected areas*

**Ormea 8-18 July 2016**

**Milton Dines**

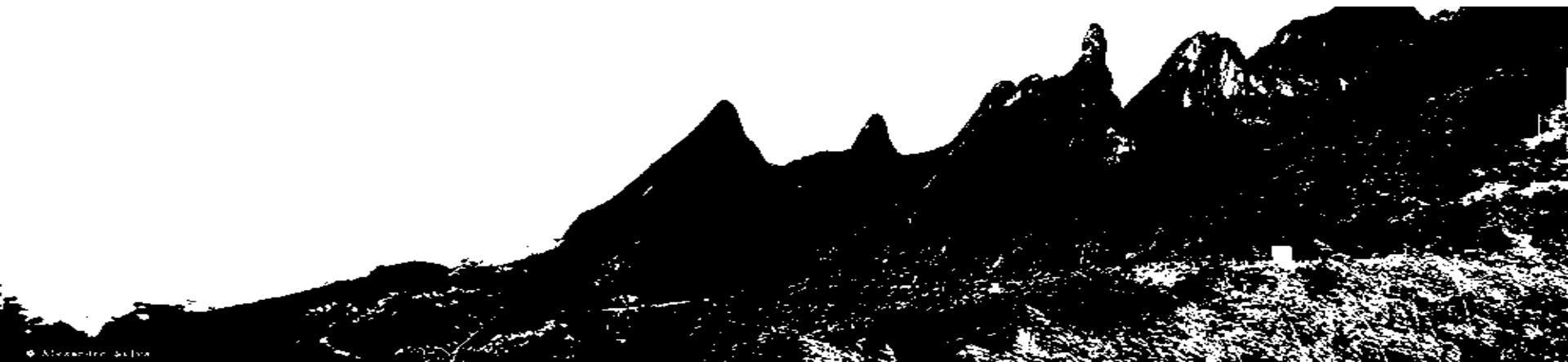
**São Paulo – Brazil**

**mdines@uol.com.br**

CBME – Brazilian Federation of Mountaineering , Climbing and Hicking

FIAMFAAM – Architecture and Urbanism School

UMAPAZ – Environment and Peace Culture Open University – PMSP



## **Education**

- Bachelor in Architecture and Urbanism at Mackenzie University – São Paulo
- MSc. In in Architecture and Urbanism at Universidade de São Paulo (USP)
- Landscape Architect by ABAP and UCP (Brazil)

## **Employment and main activities**

- Chief Coordinator at UMAPAZ – Open University in Environment and Peace Culture (PMSP)
- Professor of Landscape Architecture at FIAMFAAM Architecture and Urbanism

## **Other interests**

- Volunteer Environmental Director at CBME – Brazilian Federation of Mountaneering, Climbing and Hicking – for 12 years (2002 – 2014)
- Hicking
- Landscape Photography



# Creation of Pedra do Baú Natural Monument

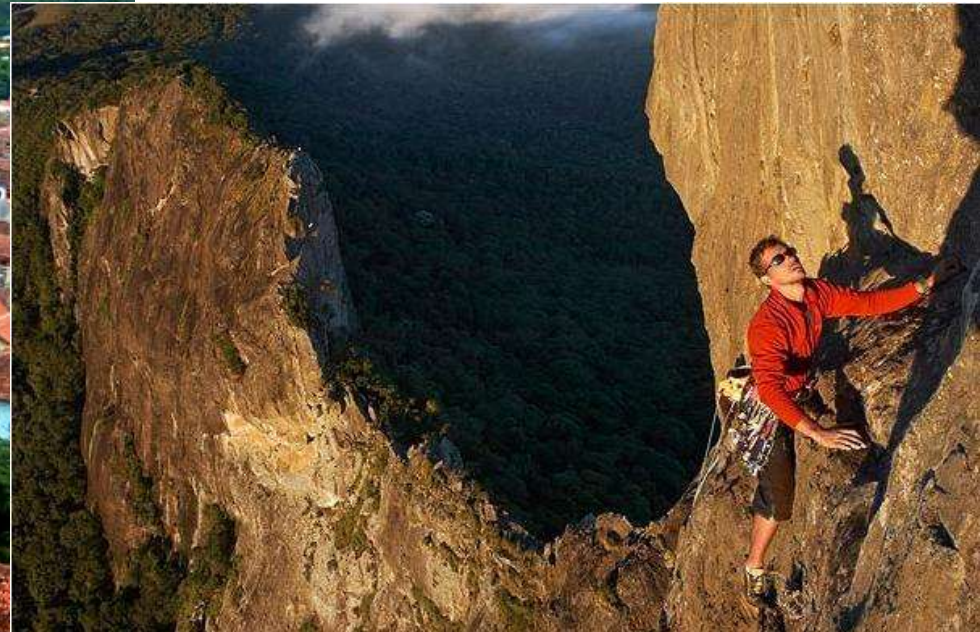
IUCN category III – Natural Monument or Feature



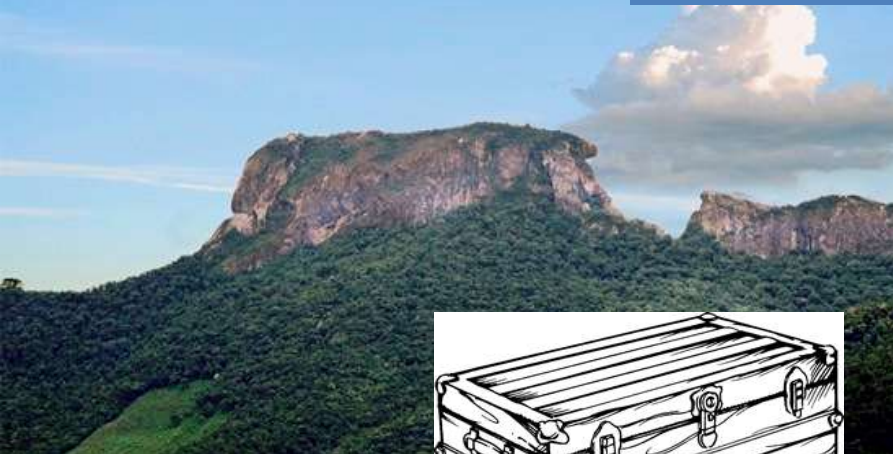
Cloud forest

Biome - Atlantic Rainforest





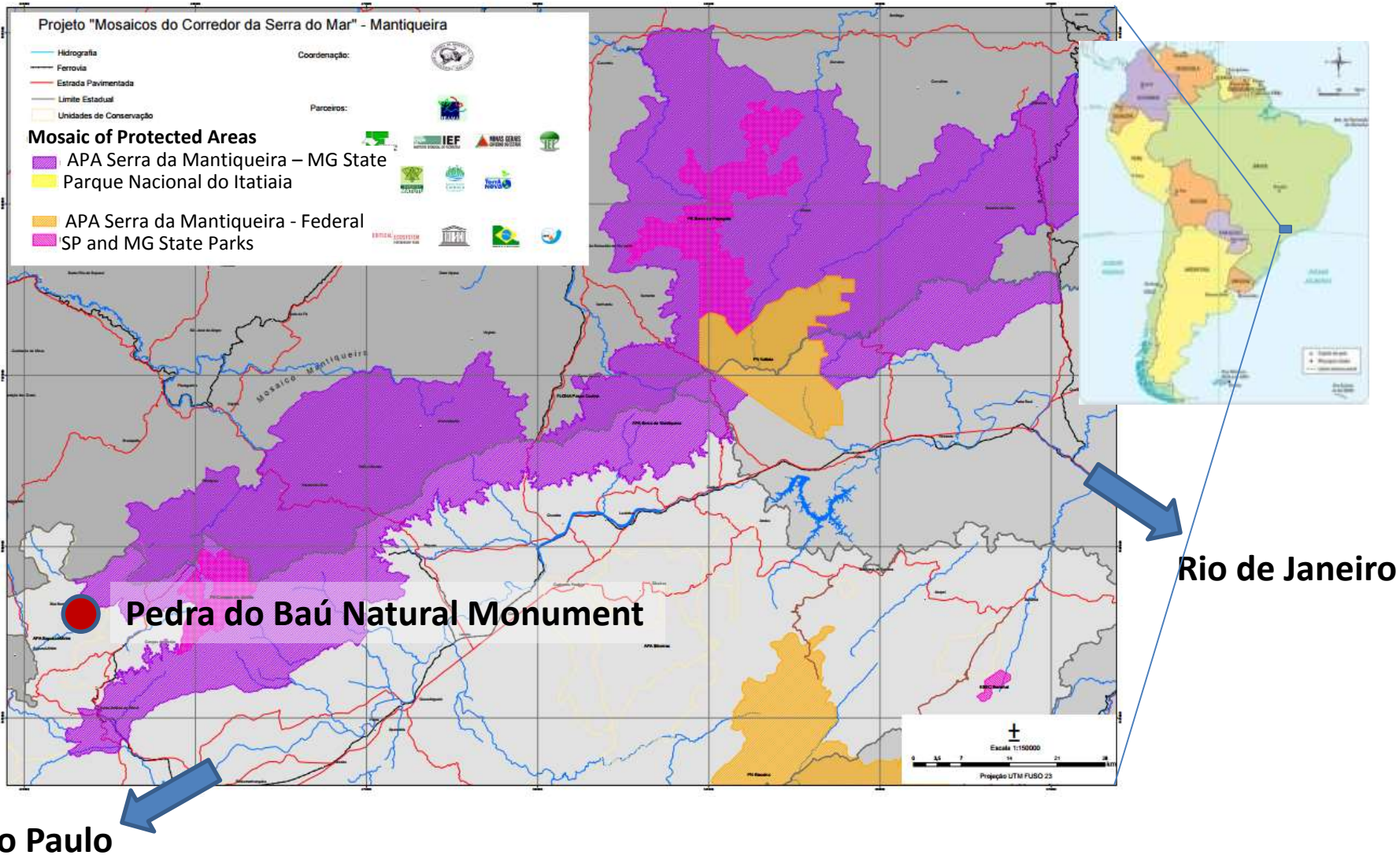
São Bento do Sapucaí, Mantiqueira Range



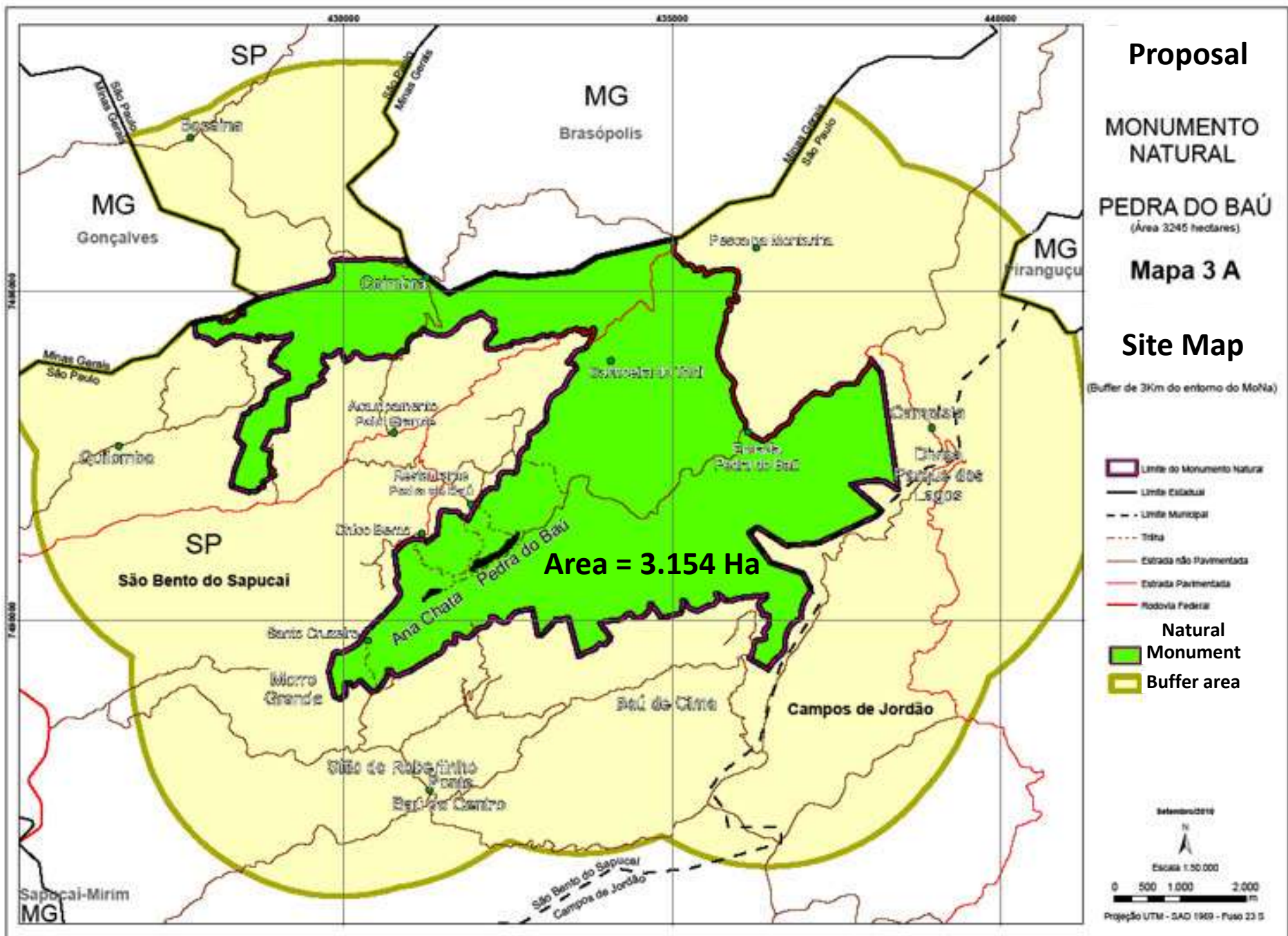
**Pedra do Baú  
(Trunk Rock)**







**Mosaic of Protected Areas - Serra do Mar Corridor - Mantiqueira Range**  
 729.138 hectares in the Atlantic Rainforest Biome



**Proposal**

**MONUMENTO NATURAL**

**PEDRA DO BAÚ**  
(Área 3245 hectares)

**Mapa 3 A**

**Site Map**

(Buffer de 3Km do entorno do MoNta)

**Area = 3.154 Ha**

- Limite do Monumento Natural
- Limite Estadual
- Limite Municipal
- Tinha
- Estrada não Pavimentada
- Estrada Pavimentada
- Rodovia Federal

**Natural Monument Buffer area**



Projeção UTM - SAD 1969 - Fuso 23 S



## Wildlife Conservation

Tucano de bico verde - **Red-breasted Toucan** - *Ramphastos dicolorus*



Gavião pega-macaco **Black Hawk-Eagle** - *Spizaetus tyrannus*



A person with their hair in a bun, wearing a black top and patterned shorts, sits on a large, textured rock formation on a mountain ridge. They are looking out over a vast, green valley filled with dense forest. In the distance, a prominent, sharp rock peak rises against a sky filled with large, white and grey clouds. The lighting suggests late afternoon or early morning, with long shadows and warm tones.

# Thank you

**Milton Dines**   São Paulo - Brazil  
**[mdines@uol.com.br](mailto:mdines@uol.com.br)**