

Adriano Oggiano

Landscape approach for enhancing built environment resilience

IPROMO - Landscape approach for enhancing mountain resilience

CSALP - Pieve Tesino (Italy) 03 July 2019

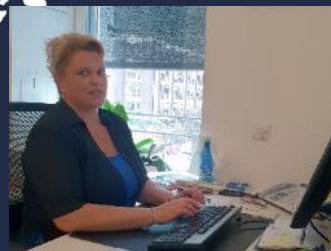
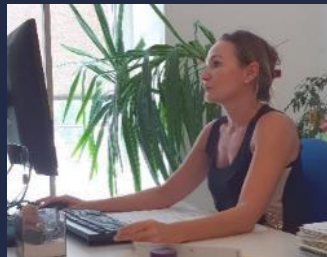
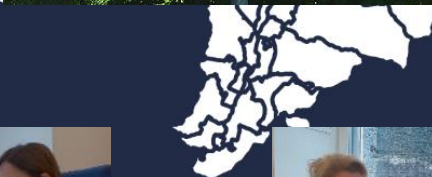
AUTONOME PROVINZ BOZEN - SÜDTIROL
Autonomous Province of Bolzano - South Tyrol (Italy)



Adriano Oggiano

PROVINCIA AUTONOMA DI BOLZANO - ALTO ADIGE

IPROMO 2019 - CSALP - Pieve Tesino TRENTO 03.07.2019



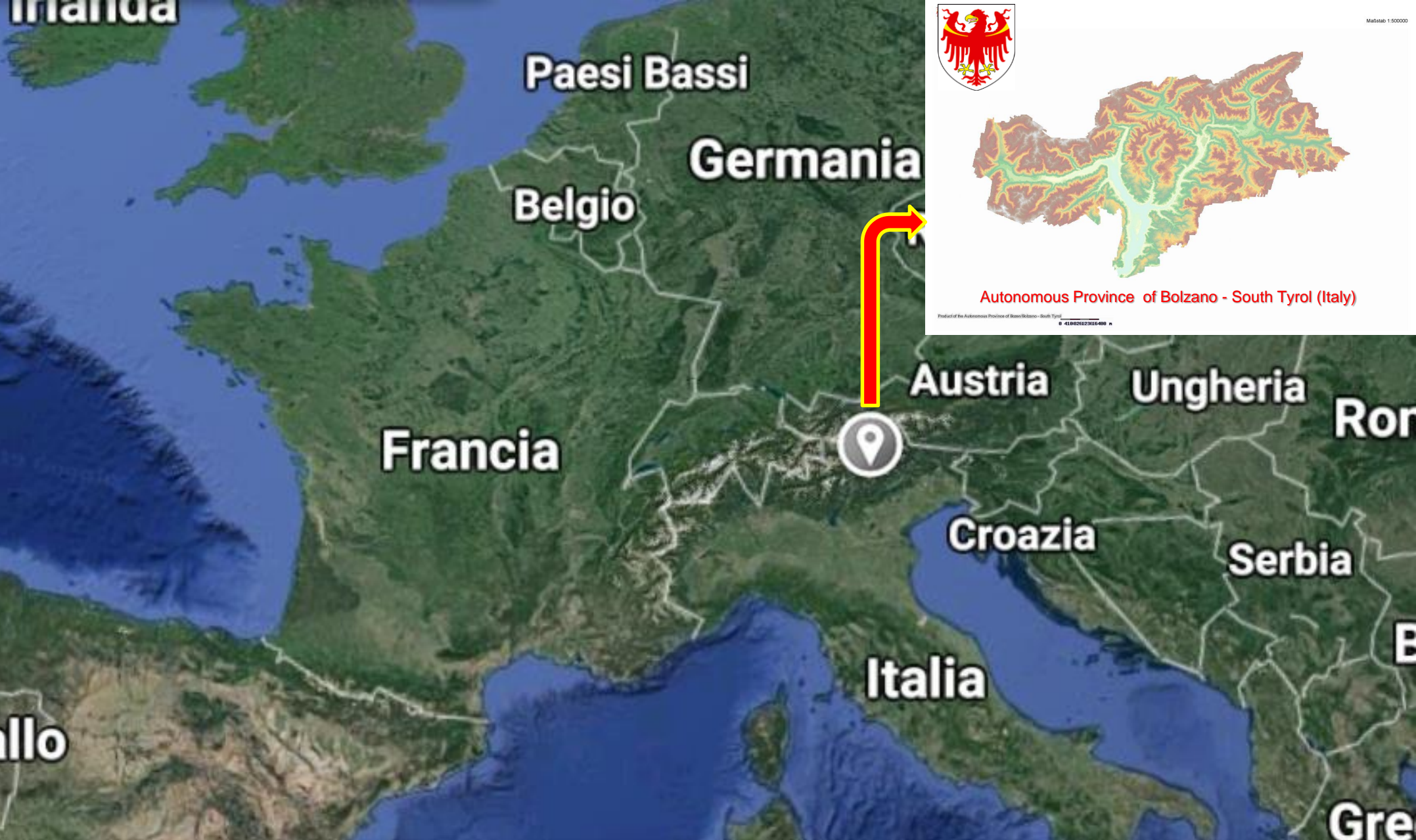
AUTONOME PROVINZ BOZEN - SÜDTIROL
Autonomous Province of Bolzano - South Tyrol (Italy)

Adriano Oggiano



PROVINCIA AUTONOMA DI BOLZANO - ALTO ADIGE

IPROMO 2019 - CSALP - Pieve Tesino TRENTO 03.07.2019



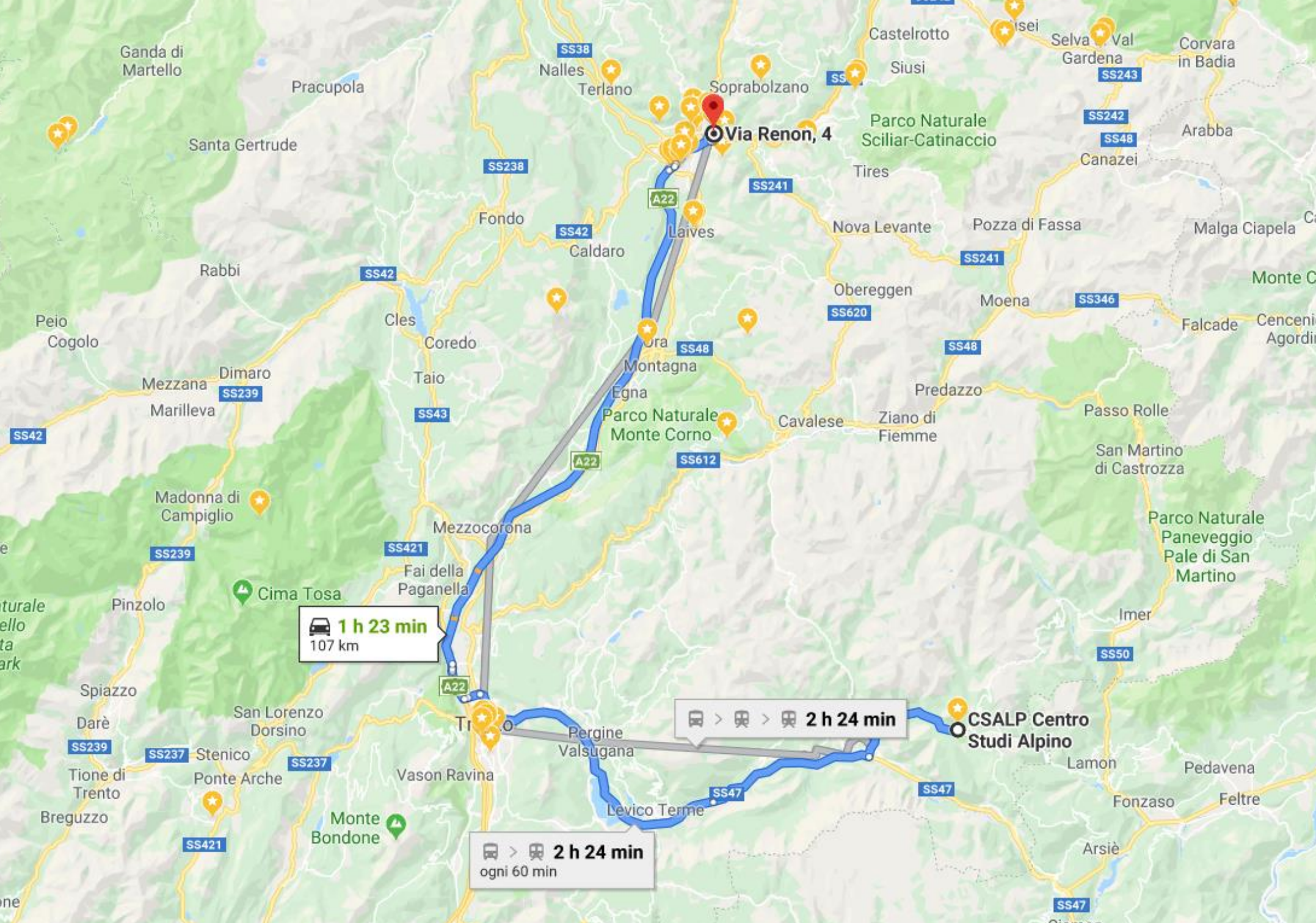
AUTONOME PROVINZ BOZEN - SÜDTIROL
Autonomous Province of Bolzano - South Tyrol (Italy)

Adriano Oggiano



PROVINCIA AUTONOMA DI BOLZANO - ALTO ADIGE

IPROMO 2019 - CSALP - Pieve Tesino TRENTO 03.07.2019



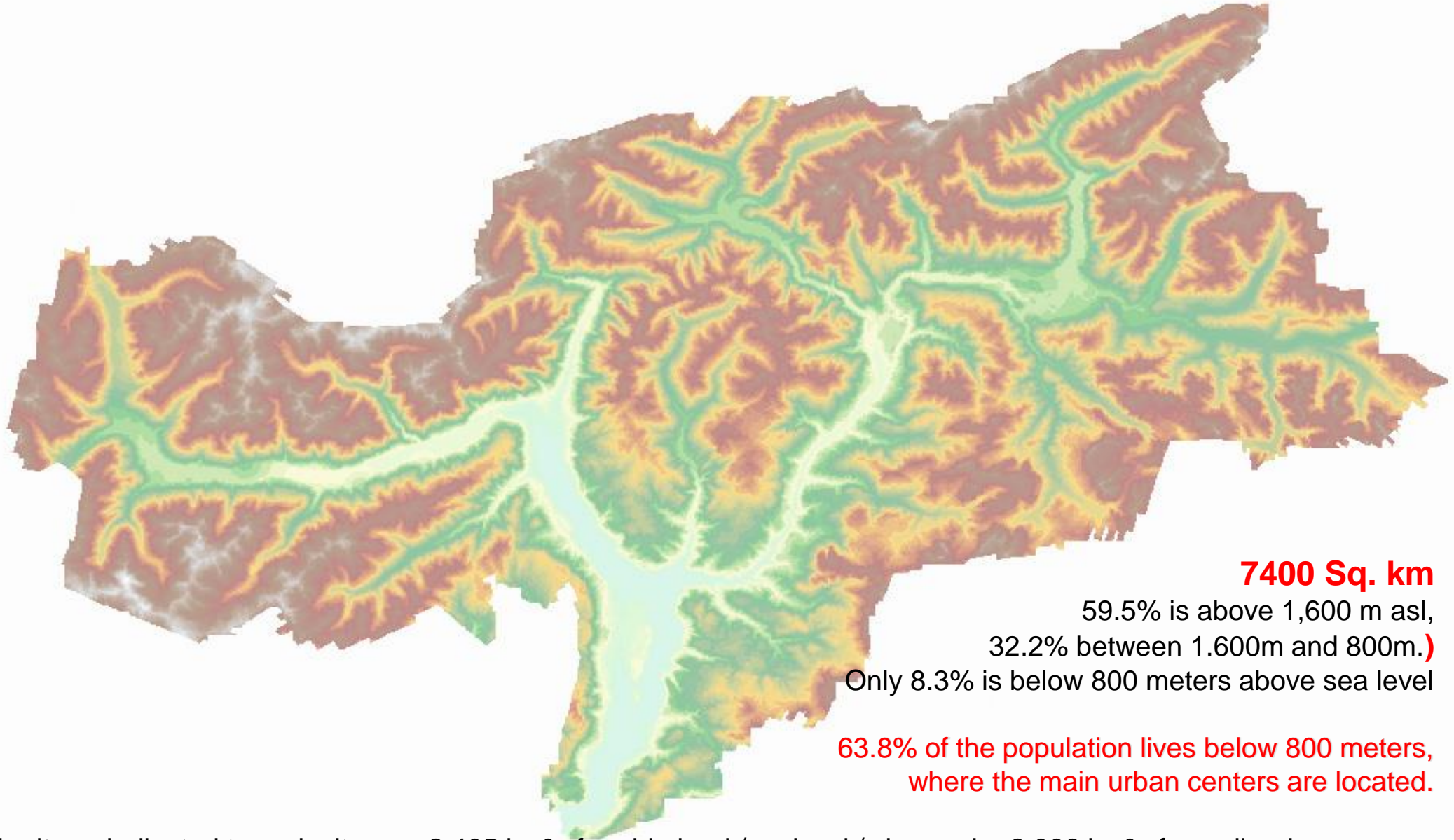
Via Renon, 4

CSALP Centro Studi Alpino

 **1 h 23 min**
107 km

 >  >  **2 h 24 min**

 >  **2 h 24 min**
ogni 60 min



7400 Sq. km

59.5% is above 1,600 m asl,
32.2% between 1.600m and 800m.)

Only 8.3% is below 800 meters above sea level

**63.8% of the population lives below 800 meters,
where the main urban centers are located.**

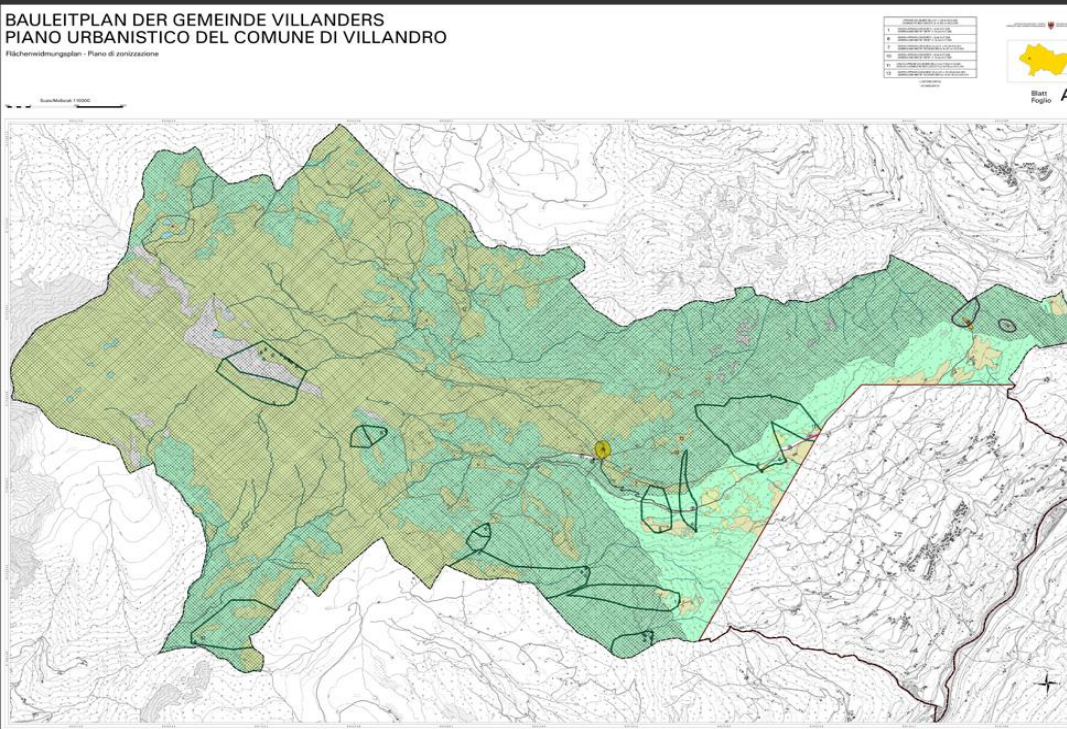
Territory dedicated to agriculture = 2.405 km² of arable land / orchard / vineyard + 2.006 km² of woodland

Currently therefore 4,411 km², 59% of the provincial surface

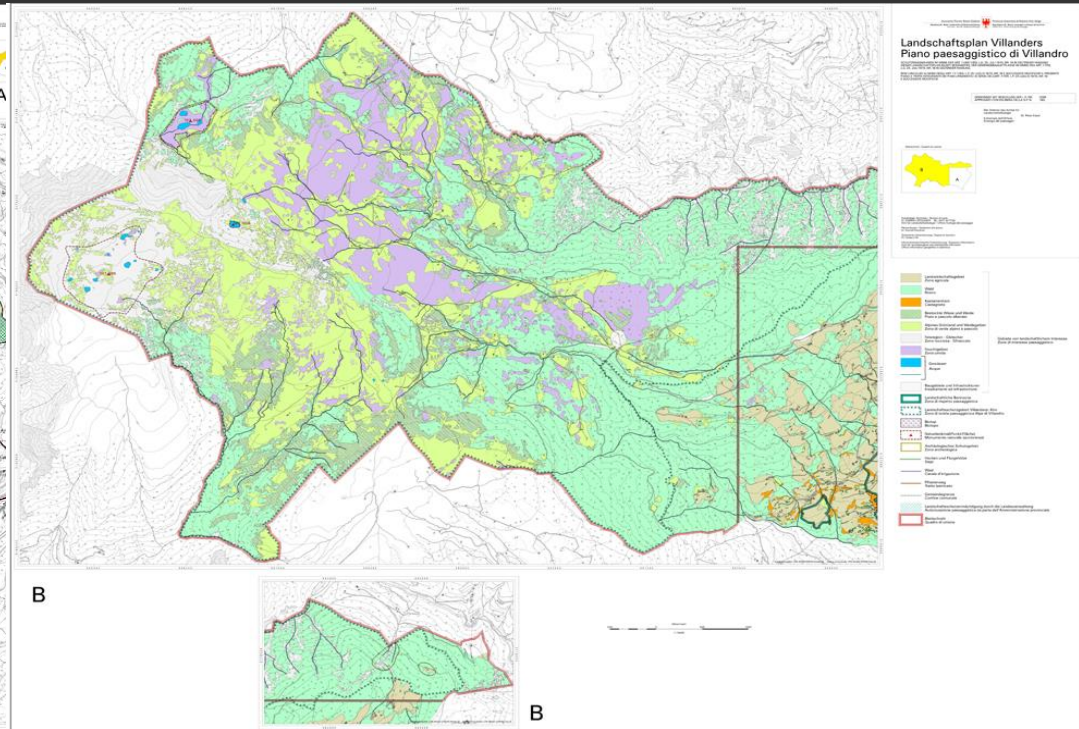
In 2000 there were 5507 Km², or 74% of the provincial surface

Planning of the urban plan and landscape protection plan covers all the municipalities of South Tyrol since 1978

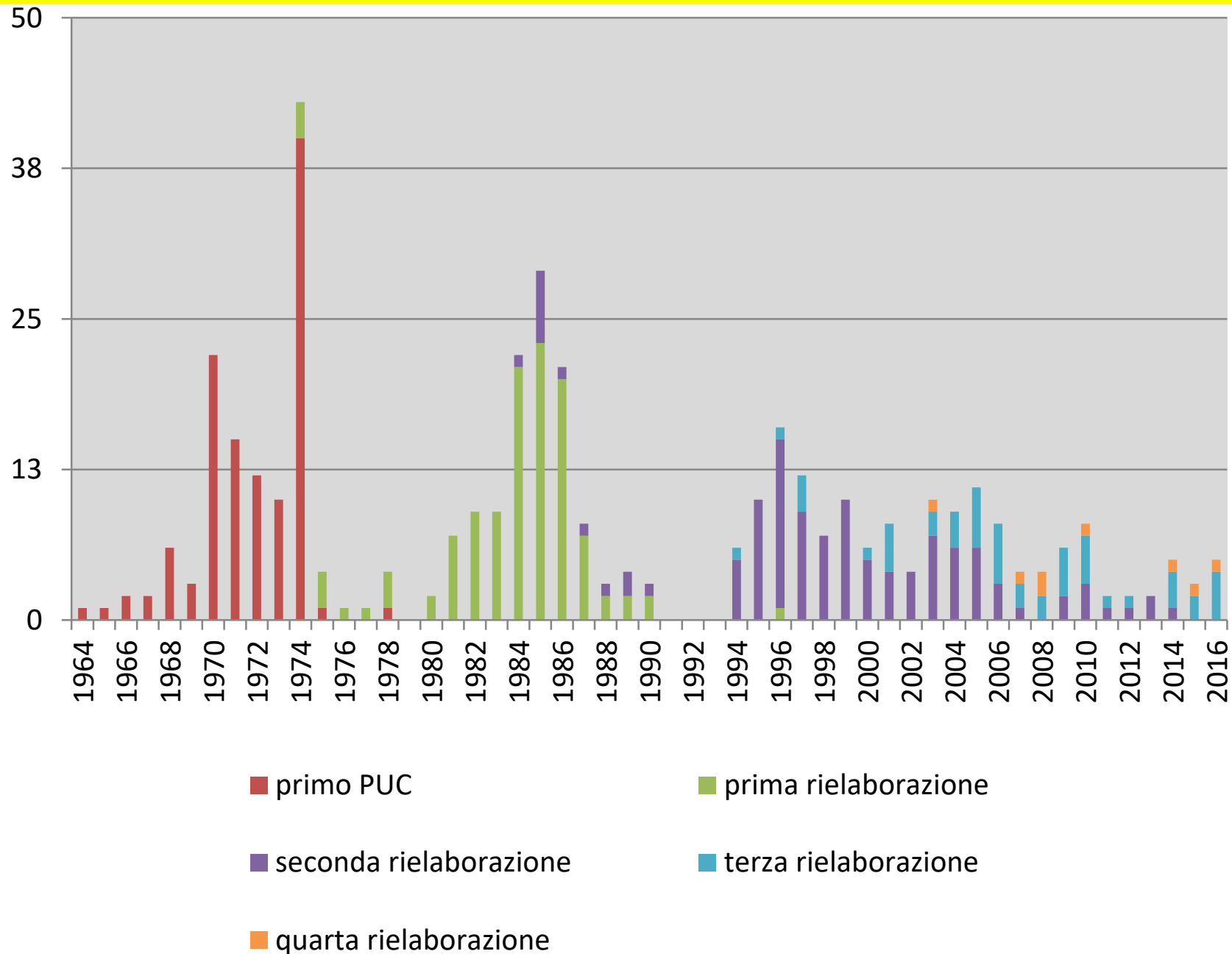
Urban Plan



Landscape Plan



Planning of the municipal plan covers all the municipalities of South Tyrol since 1978



the enhancement of agricultural products and their productivity

Economia e Agricoltura

Tab. 2.1

Produktion, Vorleistungen und Wertschöpfung zu Herstellungspreisen der Land-, Forstwirtschaft und Fischerei - 2014

Produzione, consumi intermedi e valore aggiunto ai prezzi base dell'agricoltura, silvicoltura e pesca - 2014

PRODUKTE	Jeweilige Preise (Millionen Euro) Valori correnti (milioni di euro)	Verkettete Werte - Referenzjahr 2010 Valori concatenati - anno di riferimento 2010			PRODOTTI
		Millionen Euro Milioni di euro	% Veränd. geg. 2013 Variazione % risp. 2013	% Veränd. geg. 2005 Variazione % risp. 2005	
	2014	INSGESAMT / TOTALE			
Produktionswert	1.237,7	1.229,8	0,7	25,5	Produzione
Vorleistungen (inkl. unterstellter Bankgebühr)	347,7	323,1	-2,3	47,2	Consumi intermedi (compreso Sifim)
Wertschöpfung insgesamt	890,0	905,8	1,8	18,1	Valore aggiunto totale



Population

Bevölkerungs- veränderung Variazione della popolazione	TERRITORI
+ 6,6	Provincia di Bolzano
- 1,8	Italia (a)
+ 2,3	Provincia di Trento
- 3,8	Piemonte
- 5,3	Valle d'Aosta
+ 1,8	Lombardia
- 0,6	Veneto
- 1,9	Friuli-Venezia Giulia
- 5,2	Liguria
+ 0,7	Emilia-Romagna
- 1,4	Toscana

+ 2,3	Unione europea-28 (a)
	di cui:
+ 5,6	Austria (b)
+ 4,0	Germania (a)
	Altri Paesi
+ 7,4	Svizzera (b)

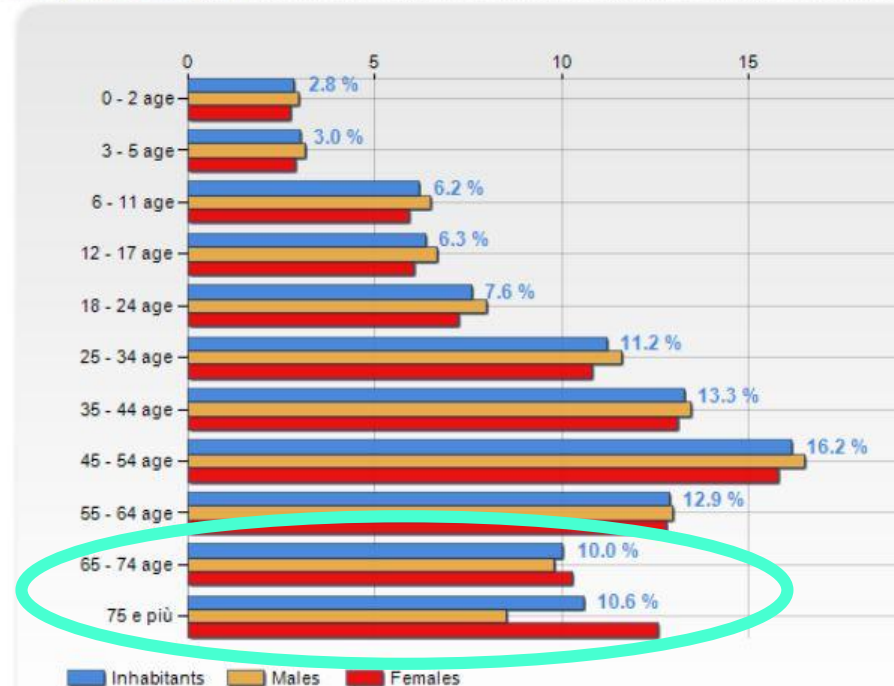


Population

■ ledig
celibi/nubili
 ■ Verheiratet, in eingetragener Lebens/
partnerschaft oder gesetzlich getrennt
coniugati/e, uniti/e civilmente o
separati/e legalmente
 ■ verwitwet
vedovi/e
 ■ geschieden
divorziati/e



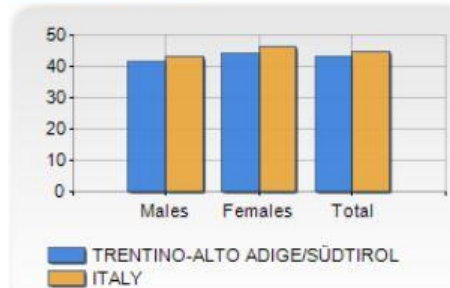
AGE CLASSES (Year 2017)



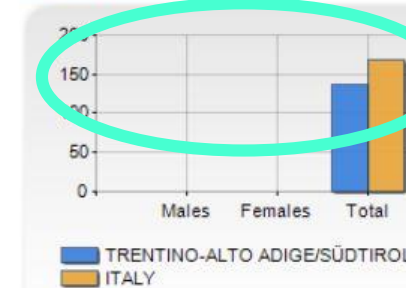
AVERAGE AGE AND OLD-AGE INDEX (Year 2017)

	Males	Females	Total
Average age (Years)	41.66	44.30	43.01
Old-age index ^[1]	-	-	135.81

AVERAGE AGE (YEARS)



OLD-AGE INDEX

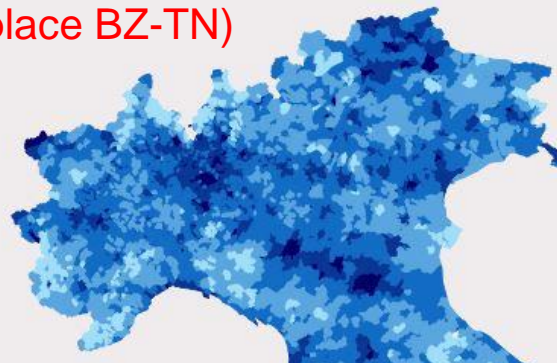


RANKINGS

- > is on 19th place among 20 regions per average age
- > is on 19th place among 20 regions per old-age index
- > is on 1st place among 20 regions per % inhabitants < 15 years old
- > is on 19th place among 20 regions per % inhabitants > 64 years old

Employment rate - At-risk-of-poverty rate - average per capita income in South Tyrol

average per capita income among the highest in Italy (4th place BZ-TN)



— 2017 —

POVERTÀ E EMARGINAZIONE					
BZ	ITA	AUT	GER	UE28	
19,0 (g)	28,4	18,8	20,3	24,5	At-risk-of-poverty rate 8. Persone a rischio di povertà o emarginazione
3,9 (g)	11,0	7,8	9,9	10,8	8.1. Persone appartenenti a famiglie a intensità lavorativa molto bassa
17,1 (g)	19,1	14,4	16,1	16,6	8.2. Persone a rischio di povertà dopo i trasferimenti sociali
3,2 (b,g)	12,4	4,2	5,4	9,6	8.3. Persone in situazione di grave deprivazione materiale

OCCUPAZIONE

	Unità di misura	Anno	BZ	ITA	AUT	GER	UE28
1. Tasso di occupazione	Employment rate	2018	79,0	63,0	76,2	79,9	73,1
1.1. Tasso di occupazione - femmine	%	2018	73,0	53,1	71,7	75,8	67,4
1.2. Tasso di occupazione - maschi	%	2018	84,9	72,9	80,7	83,9	78,9

Fonte: EUROSTAT, ISTAT (per l'Alto Adige), elaborazione ASTAT

Tourism

Alpine countries community (ARGEALP <-> South Tyrol) Arrivals – 2017

Ankünfte und Übernachtungen in den gastgewerblichen Beherbergungsbetrieben nach Gebiet - 2017

Arrivi e presenze negli esercizi ricettivi alberghieri per regione - 2017

GEBIETE	Ankünfte / Arrivi		Übernachtungen / Presenze		Mittlere Aufenthaltsdauer (Tage) Permanenza media (giorni)	Index der Tourismusintensität (a) Indice di intensità turistica (a)	REGIONI
	Anzahl Numero	% Veränderung gegenüber 2016 Variazione % rispetto al 2016	Anzahl Numero	% Veränderung gegenüber 2016 Variazione % rispetto al 2016			
Tessin	1.185.118	8,7	2.455.099	7,7	2,1	1,9	Ticino
Graubünden	1.797.235	6,7	4.853.359	4,9	2,7	6,7	Grigioni
St. Gallen	462.301	2,8	979.164	1,5	2,1	0,5	San Gallo
Bayern (Arge Alp)	5.584.156	4,0	14.789.107	1,5	2,6	2,6	Baviera (Arge Alp)
Vorarlberg	1.745.000	1,5	5.856.743	0,8	3,4	4,1	Vorarlberg
Tirol	9.004.997	3,7	34.466.049	2,2	3,8	12,7	Tirolo
Salzburg	5.921.827	5,6	19.820.339	3,0	3,3	9,9	Salisburgo
Südtirol	5.863.339	3,4	25.195.747	2,6	4,3	13,2	Alto Adige
Trentino	3.237.409	4,8	12.833.431	3,7	4,0	6,5	Trentino
Sondrio	665.790	2,5	2.065.179	15,9	3,1	3,1	Sondrio
Belluno	601.735	5,8	1.985.559	3,3	3,3	2,6	Belluno
Gebiete insgesamt	36.068.527	4,6	125.299.776	2,9	3,5	6,0	Totale regioni

+ 3,4%

+4,6%



Tourism – Arrivals and overnights of 2017/2018 (Winter-Summer)

Ankünfte und Übernachtungen in den Beherbergungsbetrieben nach Bezirksgemeinschaft und Halbjahr - Tourismusjahr 2017/18

Arrivi e presenze negli esercizi ricettivi per comunità comprensoriale e stagione - Anno turistico 2017/18

BEZIRKSGEMEINSCHAFTEN	Ankünfte / Arrivi		Übernachtungen / Presenze			COMUNITÀ COMPRESORIALI
	Anzahl Numero	% Veränderung gegenüber 2016/17 Variazione % rispetto al 2016/17	Anzahl Numero	% Veränderung gegenüber 2016/17 Variazione % rispetto al 2016/17	% Verteilung Composizione %	
Vinschgau	193.261	0,5	898.035	0,8	7,2	Val Venosta
Burggrafenamt	405.821	2,5	1.548.920	3,1	12,4	Burgraviato
Überetsch-Südt.Unterland	132.728	-3,5	460.670	-0,8	3,7	Oltradige-Bassa Atesina
Bozen	132.455	3,9	262.446	4,4	2,1	Bolzano
Salten-Schlern	546.551	10,9	2.726.818	9,0	21,8	Salto-Sciliar
Eisacktal	283.299	5,1	1.075.644	4,9	8,6	Valle Isarco
Wipptal	185.088	3,3	663.724	6,6	5,3	Alta Valle Isarco
Pustertal	1.048.017	8,6	4.900.455	8,3	39,1	Val Pusteria
Winterhalbjahr	2.927.220	6,1	12.536.712	6,4	100,0	Stagione invernale
Vinschgau	373.726	2,3	1.503.789	1,5	7,3	Val Venosta
Burggrafenamt	1.110.366	0,7	5.682.126	0,2	27,5	Burgraviato
Überetsch-Südt.Unterland	423.677	1,7	1.838.049	2,0	8,9	Oltradige-Bassa Atesina
Bozen	202.565	5,0	421.430	2,5	2,0	Bolzano
Salten-Schlern	631.065	1,1	3.175.096	0,9	15,3	Salto-Sciliar
Eisacktal	468.430	2,8	1.947.925	2,3	9,4	Valle Isarco
Wipptal	235.547	6,5	796.334	7,8	3,8	Alta Valle Isarco
Pustertal	1.128.480	2,1	5.333.488	1,2	25,8	Val Pusteria
Sommerhalbjahr	4.573.856	2,0	20.700.235	1,3	100,0	Stagione estiva
Vinschgau	566.987	1,7	2.111.927	1,2	7,2	Val Venosta
Burggrafenamt	1.516.187	1,2	7.231.046	0,8	21,8	Burgraviato
Überetsch-Südt.Unterland	556.405	0,4	2.298.719	1,4	6,9	Oltradige-Bassa Atesina
Bozen	335.020	4,5	683.876	3,2	2,1	Bolzano
Salten-Schlern	1.117.616	5,5	5.901.914	4,5	17,8	Salto-Sciliar
Eisacktal	751.729	5,1	3.023.569	3,2	9,1	Valle Isarco
Wipptal	420.635	5,1	1.460.058	7,2	4,4	Alta Valle Isarco
Pustertal	2.170.497	5,1	9.235.941	4,5	30,8	Val Pusteria
Insgesamt	7.501.076	3,6	32.236.947	3,2	100,0	Totale

+ 3,6%

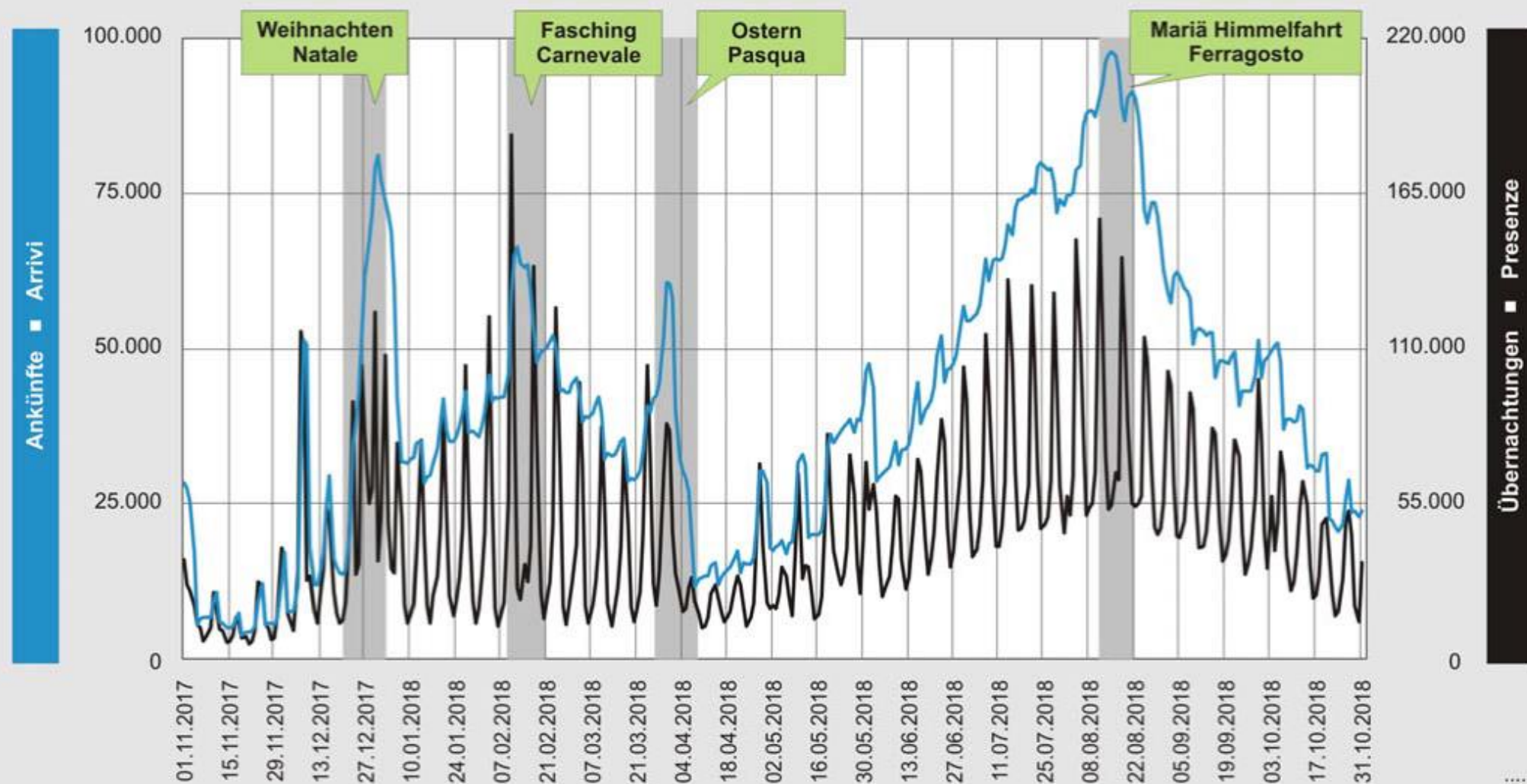
3,6

Tourism – Arrivals 2017

Graf. 5

Ankünfte und Übernachtungen in den Beherbergungsbetrieben nach Tag - Tourismusjahr 2017/18

Arrivi e presenze negli esercizi ricettivi per giorno - Anno turistico 2017/18



Impact of receptivity on land management

tourists equivalent to inhabitants: the sum of presences in a year (the number of nights spent by the tourists) / 200

Anno	Anno turistico	Estate	Inverno	Anno - Mese
2017	2017/18	2017	2017/18	2017 - 12
2016	2016/17	2018	2016/17	2017 - 11
2015	2015/16	2016	2015/16	2017 - 10
2014	2014/15	2015	2014/15	2017 - 09
2013	2013/14	2014	2013/14	2017 - 08

Stenstein	Benelux	Altri paesi	Totale
Presenze	Arrivi	Presenze	Arrivi
34.313	1.549	8.898	3.229
34.313	1.549	8.898	3.229

Totale	Arrivi	Presenze
66.158	66.158	307.571

Corvara
5465 Tourists eq./2018
1378 Inhabitants

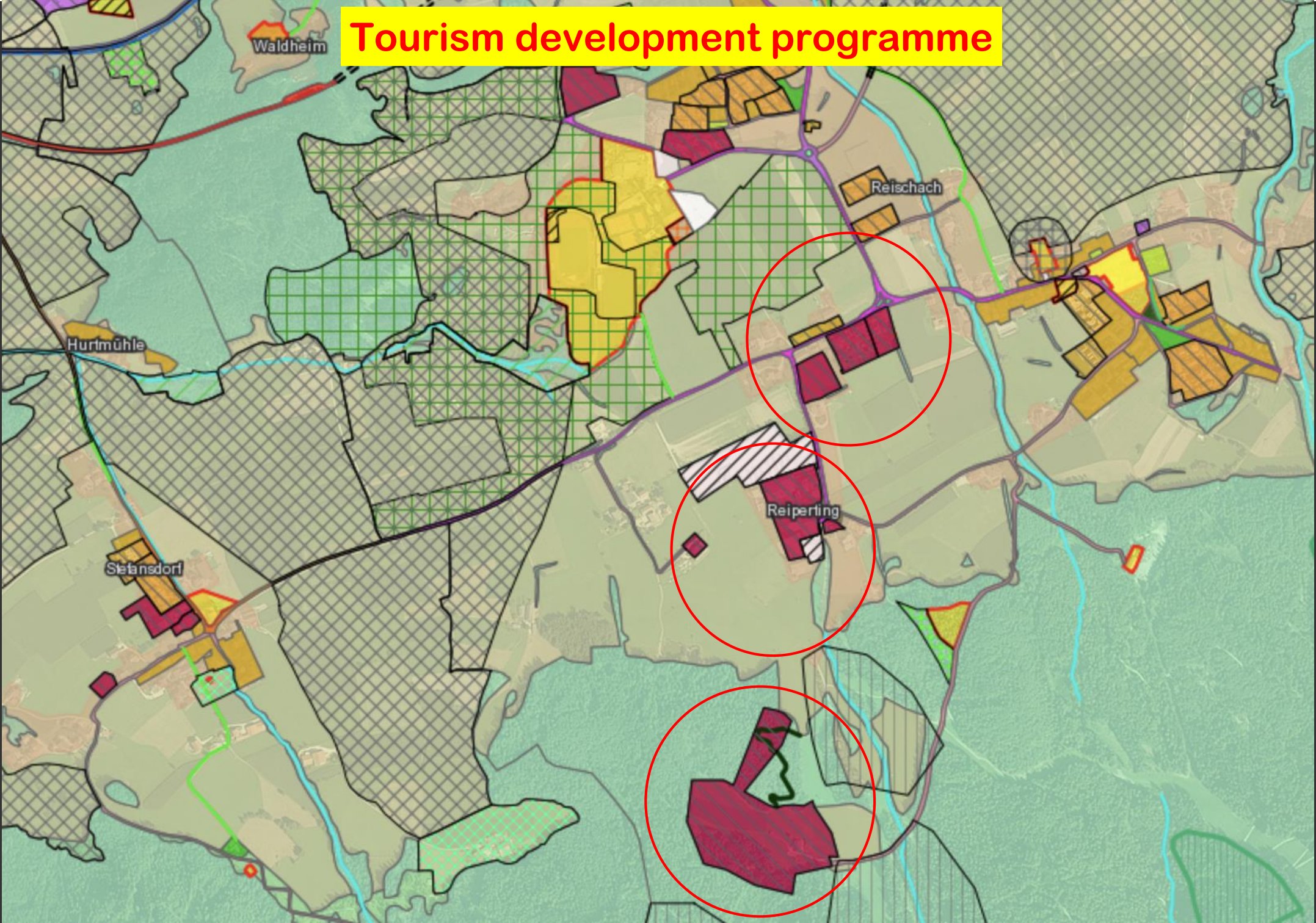
Avelengo
1537 Tourists eq./2018
778 Inhabitants

Comune	Comunità comprensoriale	Piccola area funzionale
005 Avelengo	2 Burgraviato	4 Merano
026 Corvara in Badia	8 Val Pusteria	15 Badia
001 Aldino	1 Val Venosta	1 Malles
002 Andriano	3 Oltradige-Bassa Ates.	2 Silandro
003 Anterivo	4 Bolzano	3 Naturno

Comune	Maschi	Femmine	Totale
005 Avelengo		386	392
026 Corvara in Badia		678	700
Totale	1.064	1.092	2.156



Tourism development programme



the landscape protection plan at a very detailed scale (1: 10: 000)

Provincia Autonoma di Bolzano-Alto Adige
 Autonomo Provinz Südtirol
Landschaftsplan Villanders
Piano paesaggistico di Villandro

SCHEDA PRESENTAZIONE DEL PIANO PER ART. 13 DELLA LEGGE N. 29 DEL 28 FEBBRAIO 1975, ART. 14, 15, 16, 17, 18, 19, 20, 21, 22, 23, 24, 25, 26, 27, 28, 29, 30, 31, 32, 33, 34, 35, 36, 37, 38, 39, 40, 41, 42, 43, 44, 45, 46, 47, 48, 49, 50, 51, 52, 53, 54, 55, 56, 57, 58, 59, 60, 61, 62, 63, 64, 65, 66, 67, 68, 69, 70, 71, 72, 73, 74, 75, 76, 77, 78, 79, 80, 81, 82, 83, 84, 85, 86, 87, 88, 89, 90, 91, 92, 93, 94, 95, 96, 97, 98, 99, 100.

GEMINERAT MIT BESCHLUSSE DER L. A. N. 104
 APPROVATO CON DELIBERA DELLA G. R. N. 104

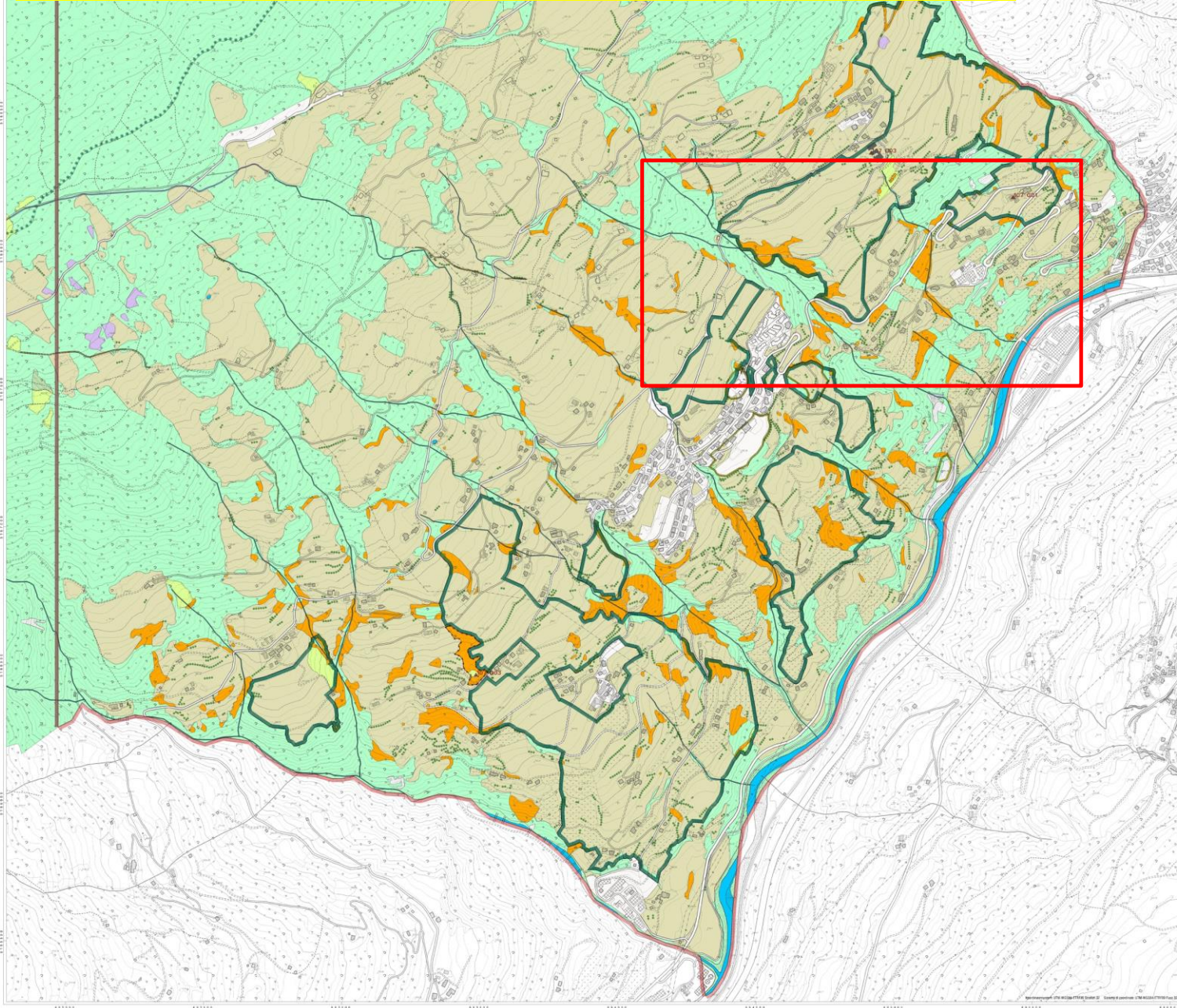
Der Direktor des Amtes für
 Landschaftspflege
 Dr. Peter Kasal
 Il direttore dell'Ufficio
 Territorio del paesaggio

Mandato / Quadro di zona



Der Landschaftsplan ist ein Teil des Landschaftsplanungsgesetzes (LPG) vom 28. Februar 1975. Er dient der Sicherung und Entwicklung des Landschaftsbildes in der Gemeinde Villandro.

Der Landschaftsplan ist ein Teil des Landschaftsplanungsgesetzes (LPG) vom 28. Februar 1975. Er dient der Sicherung und Entwicklung des Landschaftsbildes in der Gemeinde Villandro.

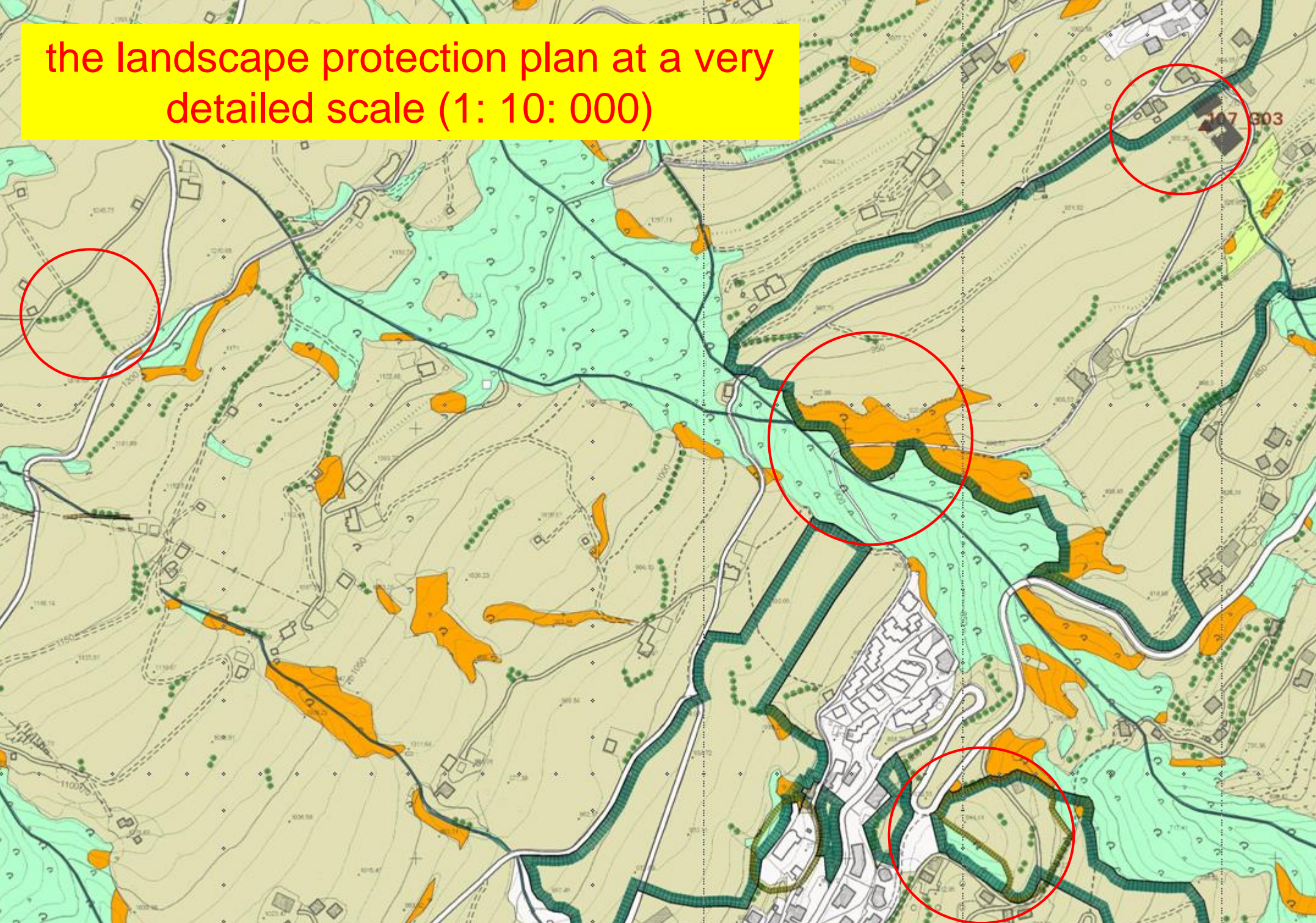


- Landwirtschaftsgebiet
Zona agricola
 - Wald
Bosco
 - Kastanienhain
Castagneto
 - Restockte Wiese und Weide
Prato e pascolo abitato
 - Alpine Grünland und Weidengebiet
Zona di verde alpino e pascolo
 - Felsen- / Gletscher
Zona rocciosa - Ghiacciaio
 - Feuchtbiet
Zona umida
 - Gewässer
Acque
 - Baugelände und Infrastrukturen
Insediamenti ed infrastrutture
 - Landschaftliche Barriere
Zona di rispetto paesaggistica
 - Landschaftsschutzgebiet Villander-Alt
Zona di tutela paesaggistica Alpe di Villandro
 - Biotop
 - Naturschutz(Punkt/Flecken)
Monumenti naturali (puntiformi)
 - Archäologisches Schutzgebiet
Zona archeologica
 - Hecken und Flurgelände
Siepi
 - Wahl
Canale d'irrigazione
 - Pflasterweg
Tatto lastricato
 - Gemeindegrenze
Confine comunale
 - Landschaftsschutzermächtigung durch die Landesverwaltung
Autorizzazione paesaggistica da parte dell'Amministrazione provinciale
 - Blattschnitt
Quadro di zona
- Gebiete von landschaftlichem Interesse
 Zone di interesse paesaggistico



A

the landscape protection plan at a very detailed scale (1: 10: 000)



Landscape transformations



AUTONOME PROVINZ BOZEN - SÜDTIROL
Autonomous Province of Bolzano - South Tyrol (Italy)

Adriano Oggiano



PROVINCIA AUTONOMA DI BOLZANO - ALTO ADIGE

IPROMO 2019 - CSALP - Pieve Tesino TRENTO 03.07.2019

Landscape transformations



AUTONOME PROVINZ BOZEN - SÜDTIROL
Autonomous Province of Bolzano - South Tyrol (Italy)

Adriano Oggiano



PROVINCIA AUTONOMA DI BOLZANO - ALTO ADIGE

IPROMO 2019 - CSALP - Pieve Tesino TRENTO 03.07.2019

Landscape transformations



Landscape transformations



AUTONOME PROVINZ BOZEN - SÜDTIROL
Autonomous Province of Bolzano - South Tyrol (Italy)

Adriano Oggiano



PROVINCIA AUTONOMA DI BOLZANO - ALTO ADIGE

IPROMO 2019 - CSALP - Pieve Tesino TRENTO 03.07.2019

Landscape transformations



AUTONOME PROVINZ BOZEN - SÜDTIROL
Autonomous Province of Bolzano - South Tyrol (Italy)

Adriano Oggiano



PROVINCIA AUTONOMA DI BOLZANO - ALTO ADIGE

IPROMO 2019 - CSALP - Pieve Tesino TRENTO 03.07.2019

Landscape transformations



Landscape transformations



AUTONOME PROVINZ BOZEN - SÜDTIROL
Autonomous Province of Bolzano - South Tyrol (Italy)

Adriano Oggiano



PROVINCIA AUTONOMA DI BOLZANO - ALTO ADIGE

IPROMO 2019 - CSALP - Pieve Tesino TRENTO 03.07.2019

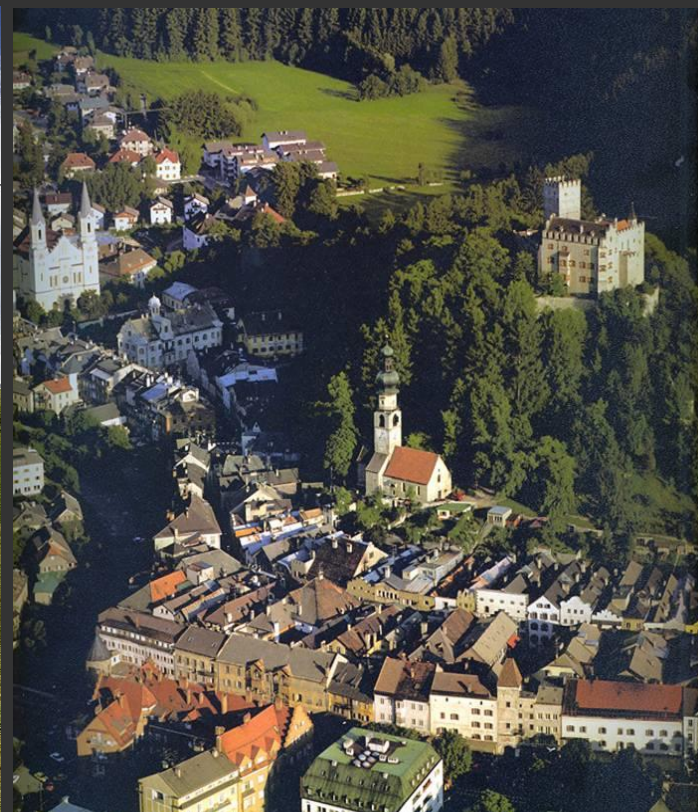


preservation of cultural identity and local specificities (ensemble)

In 2007, the provincial urban planning law introduced a set of protection procedures that are part of the municipalities' competences and initiatives.



Altwengen
Historical value



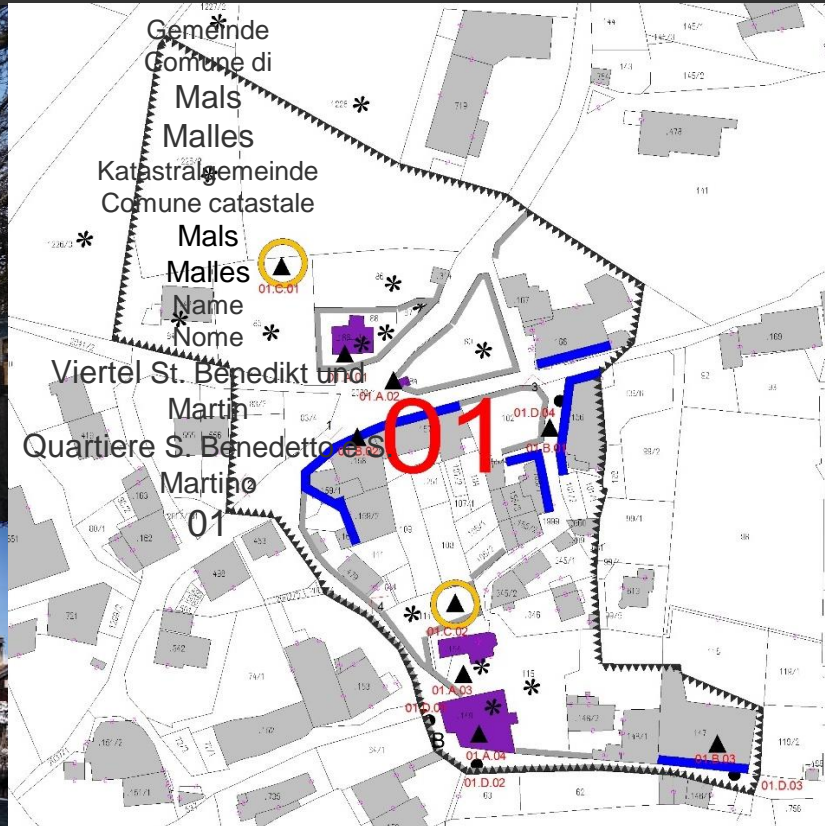
Bruneck
Permanence of the building typology



Sterzing
Stylistic connotation, and that is stylistic unity



preservation of cultural identity and local specificities (ensemble) the example of Malles



Assessment of Project and Evaluation Criteria Guidelines for landscape protection

<http://www.provincia.bz.it/natura-territorio/temi/costruire-interventi-paesaggistici.asp>



Titolo und Funktion für das Suchfeld eintragen..... Criteri e indizi per la tutela del paesaggio

Inhaltsverzeichnis / <u>Indice</u>	
Vorwort / Introduzione	7
Deutung des territorialen Zusammenhanges / La lettura del contesto territoriale	9
ART DER EINGRIFFE / TIPOLOGIE DI INTERVENTI	13
1. Eingriffe im Wald - Interventi nel bosco	14
2. Eingriffe zur Bodenverbesserung in der Agrarlandschaft - Interventi di miglioramento nel paesaggio agrario	19
3. Straßenbau - Opere stradali	24
4. Wasserleitungen - Derivazioni d'acqua	32
5. Wasserkraftwerke - Centrali idroelettriche	36
6. Bewässerungsanlagen - Impianti di irrigazione	39
7. Künstliche Beschneidungsanlagen - Impianti di innevamento artificiale	41
8. Steinbrüche - Cave	44
9. Liftenlagen und Skilisten - Impianti di risalita e pista da sci	48
10. Künstliche Wasserbecken - Bacini idrici artificiali	52
11. Strom- und Telefonleitungen - Linee elettriche e telefoniche aerea	56
12. Bauwesen - Costruzioni	61
13. Strukturen und Arbeiten für die Sicherheit - Strutture e opere di messa in sicurezza	68
Denkmalliche Traces di riflessione	73
Landschaftsbericht - La relazione paesaggistica	75
Inhalte des Landschaftsberichts - Contenuti della relazione paesaggistica	76
Die Landschaft enthält Informationen - Il paesaggio contiene informazioni	80
1. Landschaftseigenheiten der Örtlichkeit - Elementi culturali e paesaggistici	81
2. Geologische Besonderheiten - Caratteristiche geologiche	92
3. Vegetation, Bodenbedeckung - Vegetazione, tipo di copertura del suolo	96
4. Natürliche Landschaft - Paesaggio naturale	100
5. Stützwerke - Opere di sostegno	101
Bibliographie - Bibliografia	105





Protected areas and Dolomites Unesco Natural Heritage

AUTONOME PROVINZ BOZEN - SÜDTIROL
Autonomous Province of Bolzano - South Tyrol (Italy)

Adriano Oggiano



PROVINCIA AUTONOMA DI BOLZANO - ALTO ADIGE

IPROMO 2019 - CSALP - Pieve Tesino TRENTO 03.07.2019

Global Warming of 1.5°C

An IPCC special report on the impacts of global warming of 1.5°C above pre-industrial levels and related global greenhouse gas emission pathways, in the context of strengthening the global response to the threat of climate change, sustainable development, and efforts to eradicate poverty.

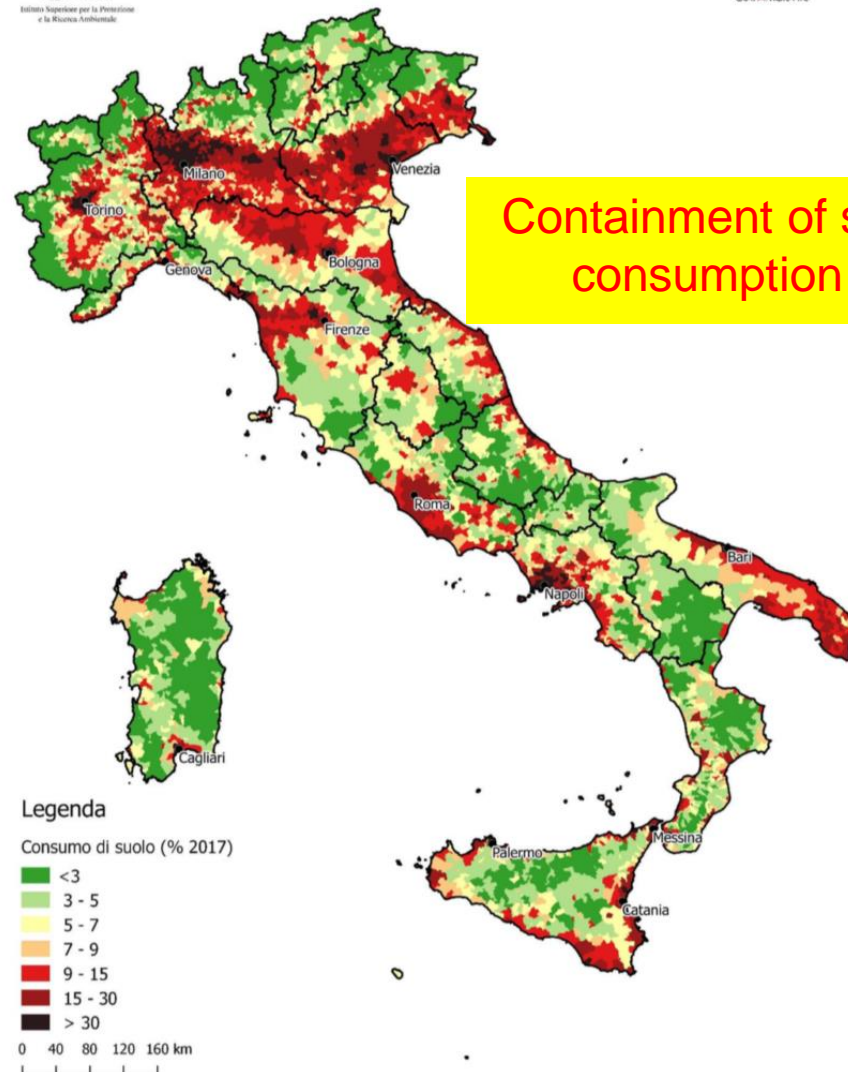
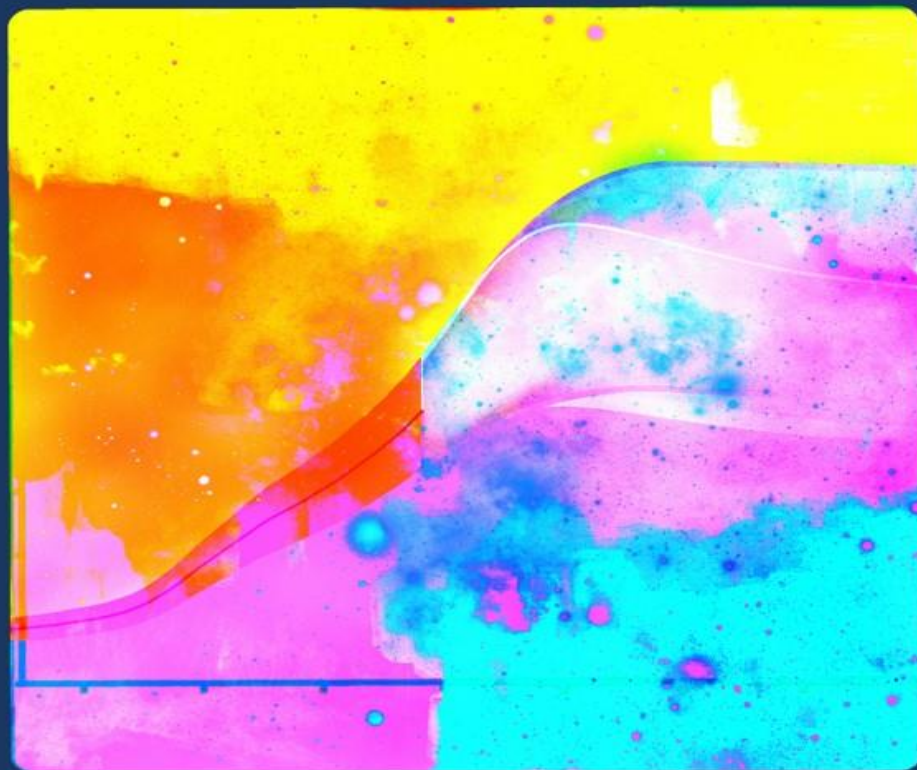
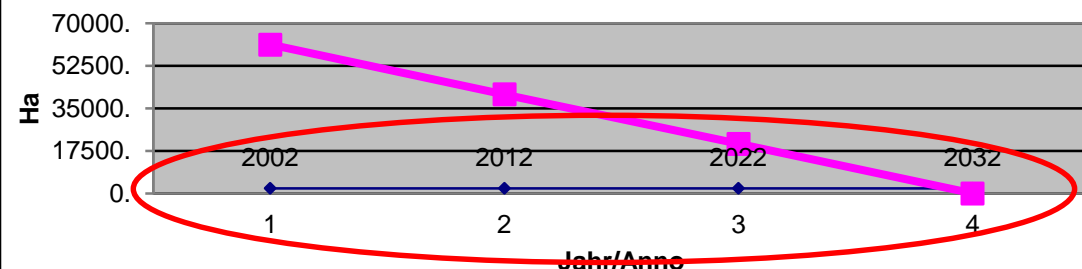


Figura 7 - Consumo di suolo a livello comunale (% esclusi i corpi idrici - 2017). Fonte: elaborazioni ISPRA su cartografia SNPA.

Trend des potenziellen Besiedlungsgrads
Tendenza del potenziale terreno insediabile
2002-2032



Settlement and the built environment
Trend of the available potential settlement areas 2002-2032

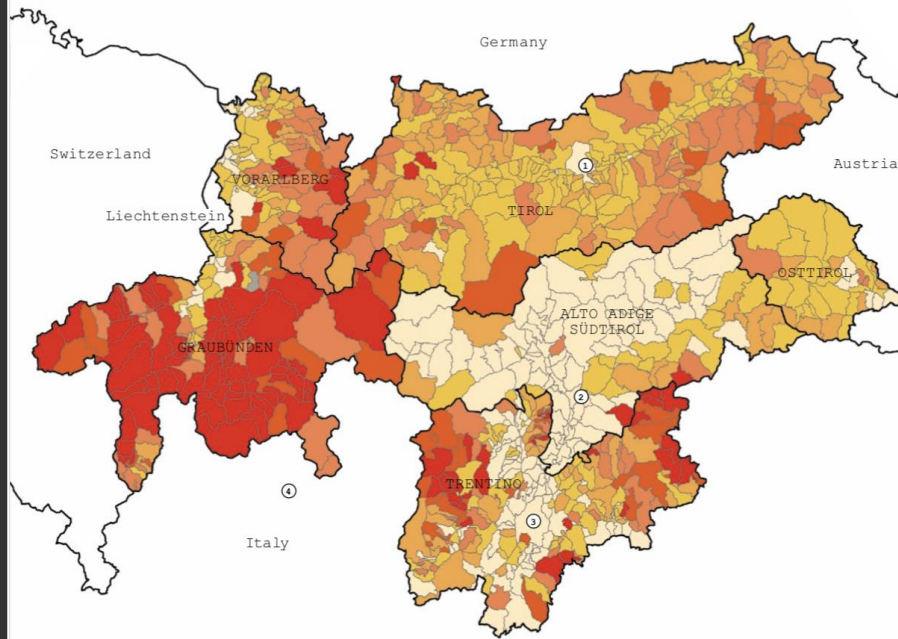
Vergleich des Dauersiedlungsgebietes - 2002, 2007, 2012 und 2017

2002	2007	2012	2017
Landesfläche			
739.980 ha	739.953 ha	739.915 ha	739.925 ha
Dauersiedlungsgebiet / Potenzieller Besiedlungsgrad			
61.237 ha / 8,28%	48.612 ha / 6,57%	40.784 ha / 5,51%	23.433 ha / 3,17%
Besiedelte Fläche / Besiedlungsgrad			
19.698 ha / 2,66%	21.096 ha / 2,85%	21.991 ha / 2,97%	22.435 ha / 3,03%
davon im Dauersiedlungsgebiet			
13.917 ha	13.814 ha	13.490 ha	10.246 ha
Erschließbares Dauersiedlungsgebiet			
47.320 ha / 6,39%	34.798 ha / 4,70%	27.293 ha / 3,69%	13.187 ha / 1,78%



SECOND HOMES

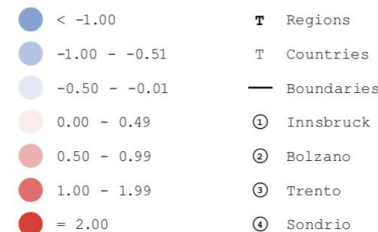
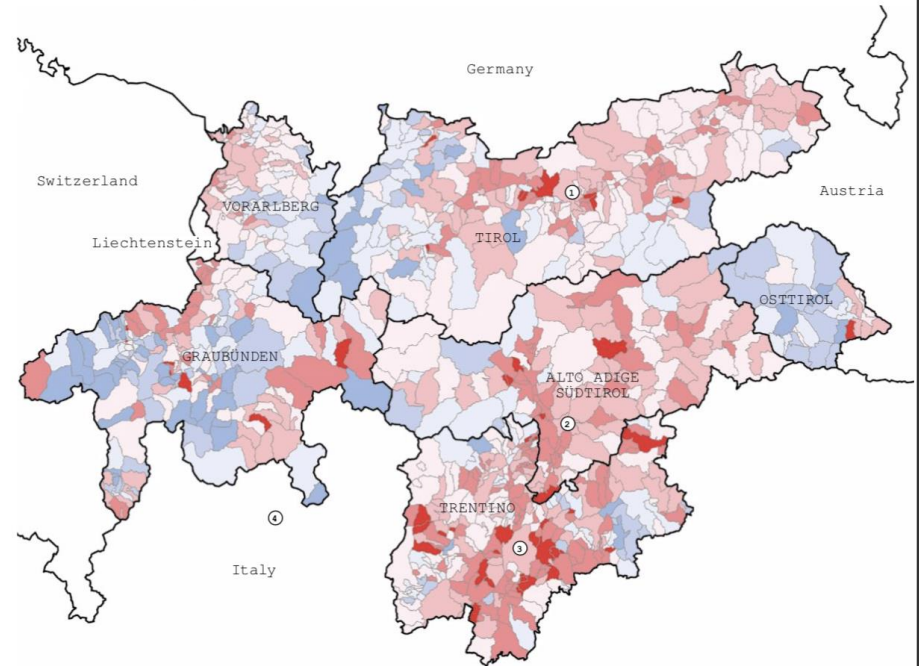
Seconde case (% delle abitazioni totali)
Zweitwohnungen (% der gesamten Wohnungen)



Source: USGS (2013); Administrative Boundaries, Cities, Water: © Eurographics, 2009; National Border: ESRI.

DEMOGRAPHY

Tasso di Crescita Demografica dal 2000 al 2010
Bevölkerungswachstum von 2000 bis 2010



USGS (2013); Administrative Boundaries, Cities, Water: © Eurographics, 2009; National Border: ESRI.



The Committee for architectural culture and the landscape

The quality of the project increases because:

- EXCHANGE OF INFORMATION
- PARTICIPATION
- common search for solutions
- Indication of possible improvements



AUTONOME PROVINZ BOZEN - SÜDTIROL
Autonomous Province of Bolzano - South Tyrol (Italy)

Adriano Oggiano



PROVINCIA AUTONOMA DI BOLZANO - ALTO ADIGE

IPROMO 2019 - CSALP - Pieve Tesino TRENTO 03.07.2019

The Committee for architectural culture and the landscape

- Development of urban settlements and prevention of building dispersion
- Insertion in the landscape and build context
- Proportions and volumes of buildings
- Creating relationship free spaces
- Choice of forms
- Choice of materials



AUTONOME PROVINZ BOZEN - SÜDTIROL
Autonomous Province of Bolzano - South Tyrol (Italy)

Adriano Oggiano



PROVINCIA AUTONOMA DI BOLZANO - ALTO ADIGE

IPROMO 2019 - CSALP - Pieve Tesino TRENTO 03.07.2019

The Committee for architectural culture and the landscape

- develops project alternatives together with all actors
- offers free consultancy
- draws up an opinion



AUTONOME PROVINZ BOZEN - SÜDTIROL
Autonomous Province of Bolzano - South Tyrol (Italy)

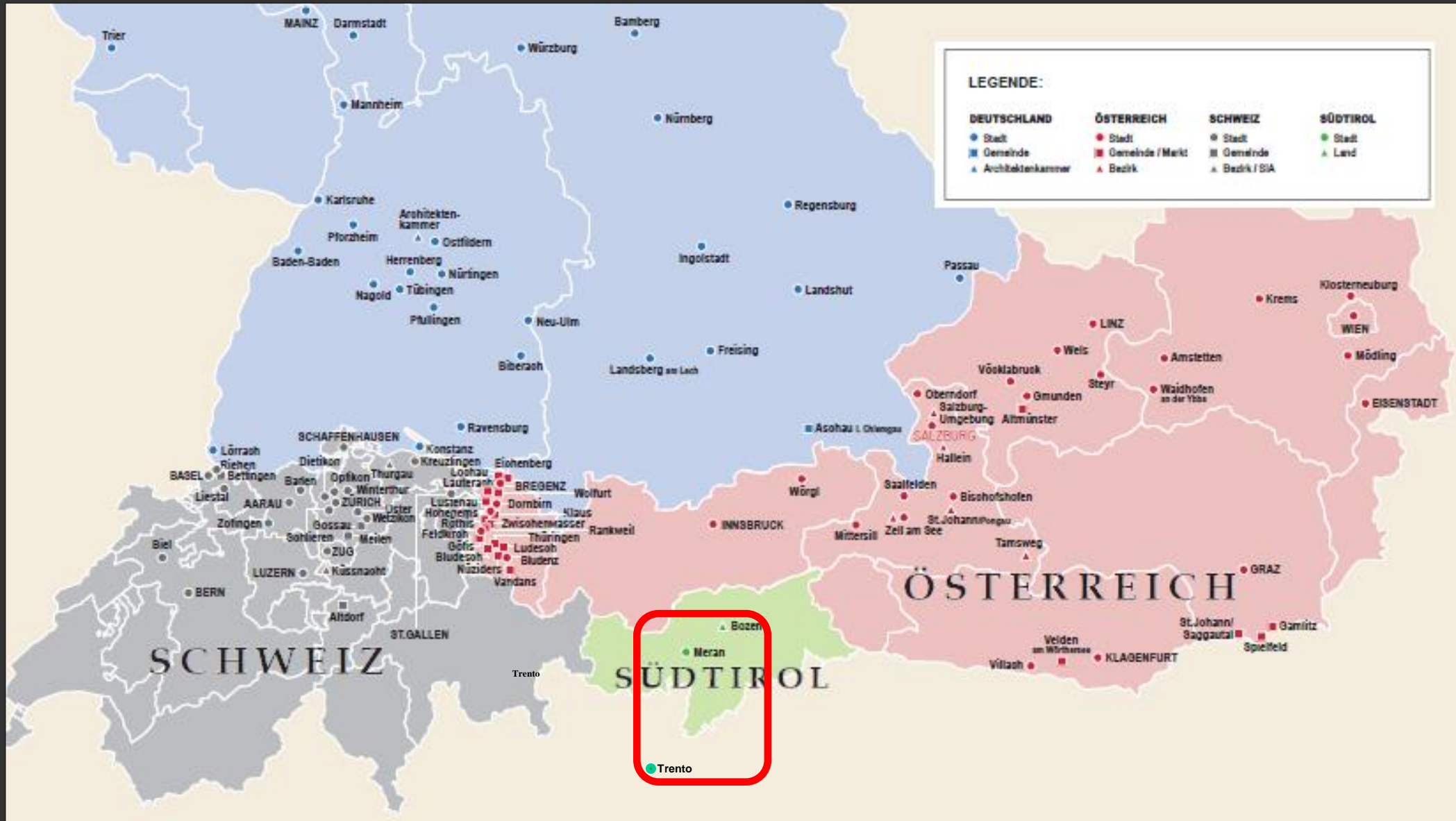
Adriano Oggiano



PROVINCIA AUTONOMA DI BOLZANO - ALTO ADIGE

IPROMO 2019 - CSALP - Pieve Tesino TRENTO 03.07.2019

the Diffusion of Committees in Northern Europe



AUTONOME PROVINZ BOZEN - SÜDTIROL
Autonomous Province of Bolzano - South Tyrol (Italy)

Adriano Oggiano



PROVINCIA AUTONOMA DI BOLZANO - ALTO ADIGE

IPROMO 2019 - CSALP - Pieve Tesino TRENTO 03.07.2019

The Committee for architectural culture and the landscape

Opinions issued

	2006 - 2008	2009 - 2011	2012 - 2014	2015-2017	2018	Total
Session of evaluation	17	18	13	16	6	70
Days	35	31	21	28	10	125
First consultation	116	119	72	70	20	397
Next consultation	49	43	36	50	24	202
Total opinions	165	162	108	120	44	<u>599</u>

- 2006-2018 = 12 years
- Consultation for 86 Municipalities (74% South Tyrol)
- 599 Opinions issued
- 50 Opinions/year





Implemented project

Existing situation for the implementation



AUTONOME PROVINZ BOZEN - SÜDTIROL
Autonomous Province of Bolzano - South Tyrol (Italy)

Adriano Oggiano



PROVINCIA AUTONOMA DI BOLZANO - ALTO ADIGE

IPROMO 2019 - CSALP - Pieve Tesino TRENTO 03.07.2019



**Giving space to new linguistic forms
respecting the existing farm**

Municipality of Renon

Renewing an existing farm



AUTONOME PROVINZ BOZEN - SÜDTIROL
Autonomous Province of Bolzano - South Tyrol (Italy)

Adriano Oggiano



PROVINCIA AUTONOMA DI BOLZANO - ALTO ADIGE

IPROMO 2019 - CSALP - Pieve Tesino TRENTO 03.07.2019

Municipality of Ora: Residential building

Implemented project



Existing situation for the implementation



AUTONOME PROVINZ BOZEN - SÜDTIROL
Autonomous Province of Bolzano - South Tyrol (Italy)

Adriano Oggiano



PROVINCIA AUTONOMA DI BOLZANO - ALTO ADIGE

IPROMO 2019 - CSALP - Pieve Tesino TRENTO 03.07.2019

Municipality of Naturno: Fruits storage facility



AUTONOME PROVINZ BOZEN - SÜDTIROL
Autonomous Province of Bolzano - South Tyrol (Italy)

Adriano Oggiano



PROVINCIA AUTONOMA DI BOLZANO - ALTO ADIGE

IPROMO 2019 - CSALP - Pieve Tesino TRENTO 03.07.2019

Fruits storage facility



AUTONOME PROVINZ BOZEN - SÜDTIROL
Autonomous Province of Bolzano - South Tyrol (Italy)

Adriano Oggiano



PROVINCIA AUTONOMA DI BOLZANO - ALTO ADIGE

IPROMO 2019 - CSALP - Pieve Tesino TRENTO 03.07.2019

Fruits storage facility



AUTONOME PROVINZ BOZEN - SÜDTIROL
Autonomous Province of Bolzano - South Tyrol (Italy)

Adriano Oggiano



PROVINCIA AUTONOMA DI BOLZANO - ALTO ADIGE

IPROMO 2019 - CSALP - Pieve Tesino TRENTO 03.07.2019

Municipality of Sluderno: Renewing the build environment

Frankenhaus

Brandstätte House

AUTONOME PROVINZ BOZEN - SÜDTIROL
Autonomous Province of Bolzano - South Tyrol (Italy)

Adriano Oggiano



PROVINCIA AUTONOMA DI BOLZANO - ALTO ADIGE

IPROMO 2019 - CSALP - Pieve Tesino TRENTO 03.07.2019



Existing situation for the implementation

Adequacy of the project to the place, type and destination

Implemented project



AUTONOME PROVINZ BOZEN - SÜDTIROL
Autonomous Province of Bolzano - South Tyrol (Italy)

Adriano Oggiano



PROVINCIA AUTONOMA DI BOLZANO - ALTO ADIGE

IPROMO 2019 - CSALP - Pieve Tesino TRENTO 03.07.2019



Municipality of Tires
where nature and connection to the
spirit of the place create identity

Implemented project

Existing situation for the implementation



AUTONOME PROVINZ BOZEN - SÜDTIROL
Autonomous Province of Bolzano - South Tyrol (Italy)

Adriano Oggiano



PROVINCIA AUTONOMA DI BOLZANO - ALTO ADIGE

IPROMO 2019 - CSALP - Pieve Tesino TRENTO 03.07.2019

Municipality of Appiano

Extension of an existing hotel respecting the surrounding landscape



Existing situation for the implementation

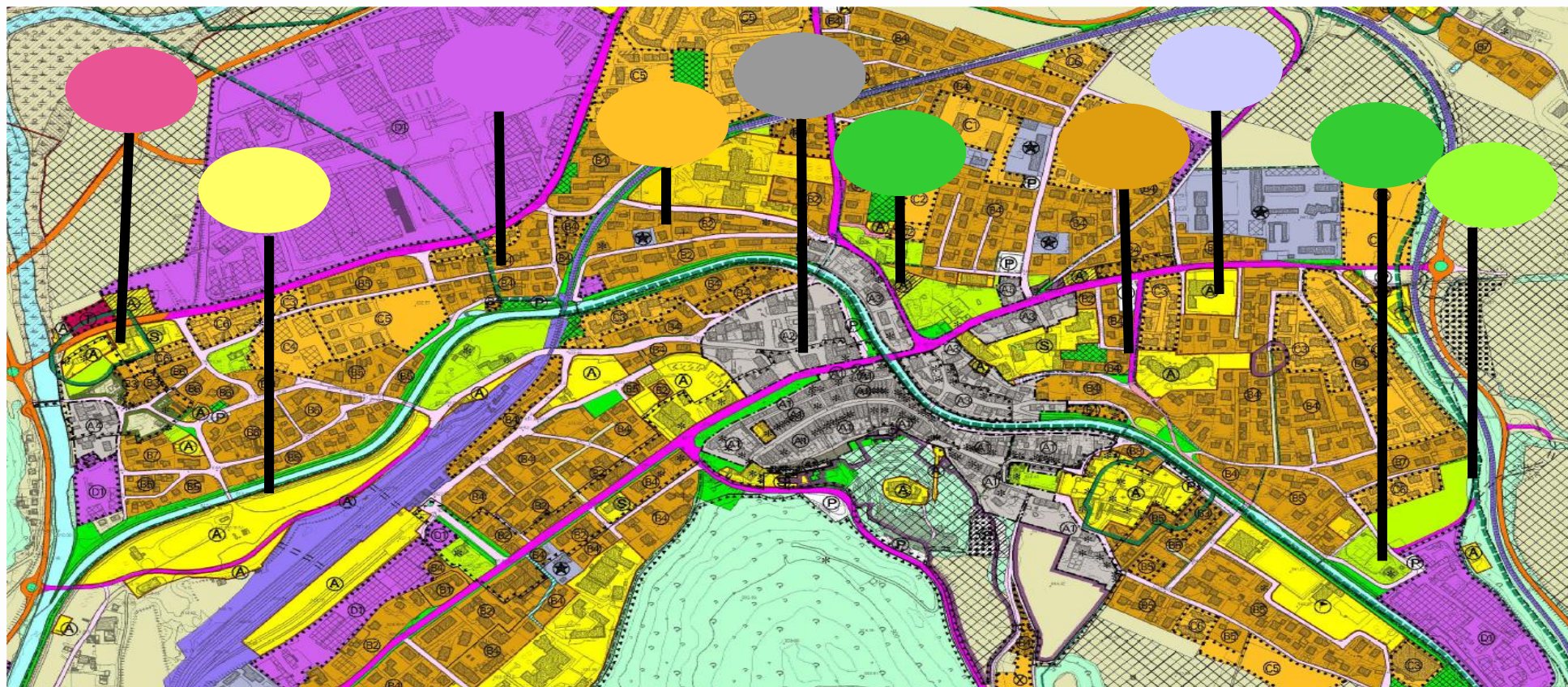


Implemented project



The new measures for the government of the territory and landscape

What's new



AUTONOME PROVINZ BOZEN - SÜDTIROL
Autonomous Province of Bolzano - South Tyrol (Italy)

Adriano Oggiano



PROVINCIA AUTONOMA DI BOLZANO - ALTO ADIGE

IPROMO 2019 - CSALP - Pieve Tesino TRENTO 03.07.2019



Nuova legge provinciale
Territorio e paesaggio

SVILUPPO DI LINEE GUIDA
E OBIETTIVI

Bolzano | Vienna, 22 luglio 2015

AUTONOME PROVINZ BOZEN - SÜDTIROL
Abteilung Natur, Landschaft und Raumentwicklung



PROVINCIA AUTONOMA DI BOLZANO - ALTO ADIGE
Ripartizione Natura, paesaggio e sviluppo del territorio

- More decision-making power to the municipalities to increase cohesion and more directly engage the citizens in the process of territorial policy at the local level
- entrusts to the Municipalities the task of programming how much land can and should be occupied in the future
- choose the borders of the settlement area through the local and landscape development programme
- demonstration conducted via a survey of the existing volumes and empty surfaces that there is a need for more land



Tomorrow (1.1.2020)

**integrated planning process: territory and landscape
urban and landscape plan**

**Provincial strategic plan
Thematic Sectoral Plans**

**Municipal development programme
territory and landscape**

Potential settlement area

**Implementation plan
territory and landscape**



Municipal development programme territory and landscape

Each Municipality

defines its limits of future development-expansion on the free territory, drawing a line of responsibilities between relevant authorities:

- on one side the Municipality will be entrusted to deliberate on transformations;
- on the other, the Provincial level authorities will have the power to settle planning related to agriculture and natural resources



Potential settlement area

Inside

- Homes
- Workplaces
- Social activities and other

Outside:

- Agricultural land, forests, pastures, water
- Infrastructures
- Areas with specific needs
 - areas for recreation
 - economic activities (e.g. services)



Municipal development programme territory and landscape

7 pilot Municipalities are at work in this initial phase

Comunità comprensoriali nell'Alto Adige
Bezirksgemeinschaften in Südtirol

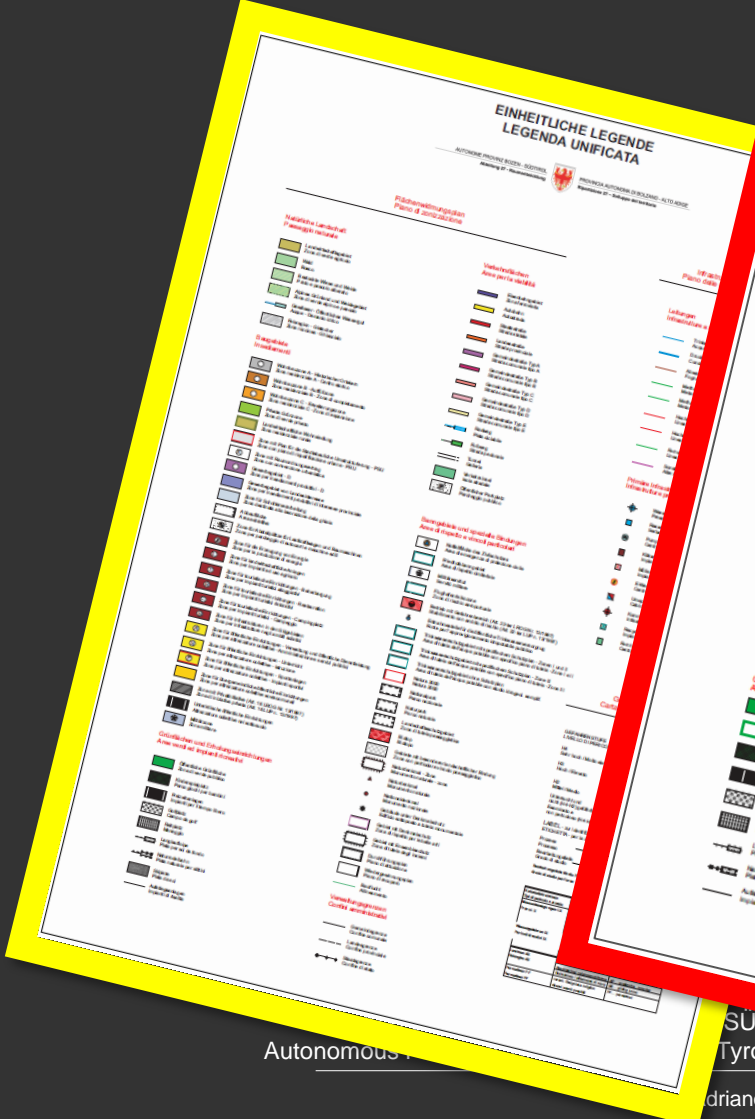


	Abitanti / Einwohner	Posti letto/ Bettenanzahl
Kurtatsch / Cortaccia	2235	516
Ratschings / Racines	4471	4215
Welschno- fen / Nova Levante	1976	1768
Klausen / Chiusa	5235	1395
Taufers i. Münster / Tubre	981	135
Corvara /Corvara	1372	7508
Lana / Lana	12286	3903

Municipal development programme territory and landscape

1. Demographic development in the Municipality + environmental conditions based on statistical surveys
2. Calculation of the needs of territorial endowments
3. survey of the existing volumes and empty surfaces
4. List of sites of cultural identity and local specificities (ensembles)
5. **Definition of the borders of the potential settlement area for the future development-expansion**
6. Municipal Mobility Development Programme
7. Municipal Tourism Development Plan
8. Evaluation of agricultural areas
9. Duration of the plan defined by the planning programme





Autonomous

SOUTH TYROL (Italy)

Adriano Oggiano



IPROMO 2015

ADIGE

The Committee for architectural culture and the landscape

For areas outside the settlement area or over 3 cubic meters / sqm of density:
the opinion on the building project by the Committee for architectural Culture and Landscape is mandatory

A. Ruinelli

2019

L. Licka

S. Brandolini



AUTONOME PROVINZ BOZEN - SÜDTIROL
Autonomous Province of Bolzano - South Tyrol (Italy)

Adriano Oggiano



PROVINCIA AUTONOMA DI BOLZANO - ALTO ADIGE

IPROMO 2019 - CSALP - Pieve Tesino TRENTO 03.07.2019

185404

Dekrete des Präsidenten/Landeshauptmanns - 1. Teil - Jahr 2018

Decreti del Presidente - Parte 1 - Anno 2018

Autonome Provinz Bozen - Südtirol
 DEKRET DES LANDESHAUPTMANNS
 vom 22. November 2018, Nr. 31
 Anwendungsrichtlinien zur Einschränkung
 des Bodenverbrauchs

Provincia Autonoma di Bolzano - Alto Adige
 DECRETO DEL PRESIDENTE DELLA PROVINCIA
 del 22 novembre 2018, n. 31
 Criteri applicativi per il contenimento del consumo di suolo

Der Landeshauptmann hat den Beschluss der Landesregierung vom 20. November 2018, Nr. 1193 zur Kenntnis genommen und

Il Presidente della Provincia vista la deliberazione della Giunta provinciale del 20 novembre 2018, n. 1193

erlässt

emana

folgende Verordnung:

il seguente regolamento:

Decree of the President of the Autonomous Province of Bolzano dated 22 November 2018, no. 31
 Application criteria for limiting the soil consumption

Juli 2018, Nr. 9, „Raum und Landschaft“, in der Folge als „Gesetz“ bezeichnet, die Anwendung

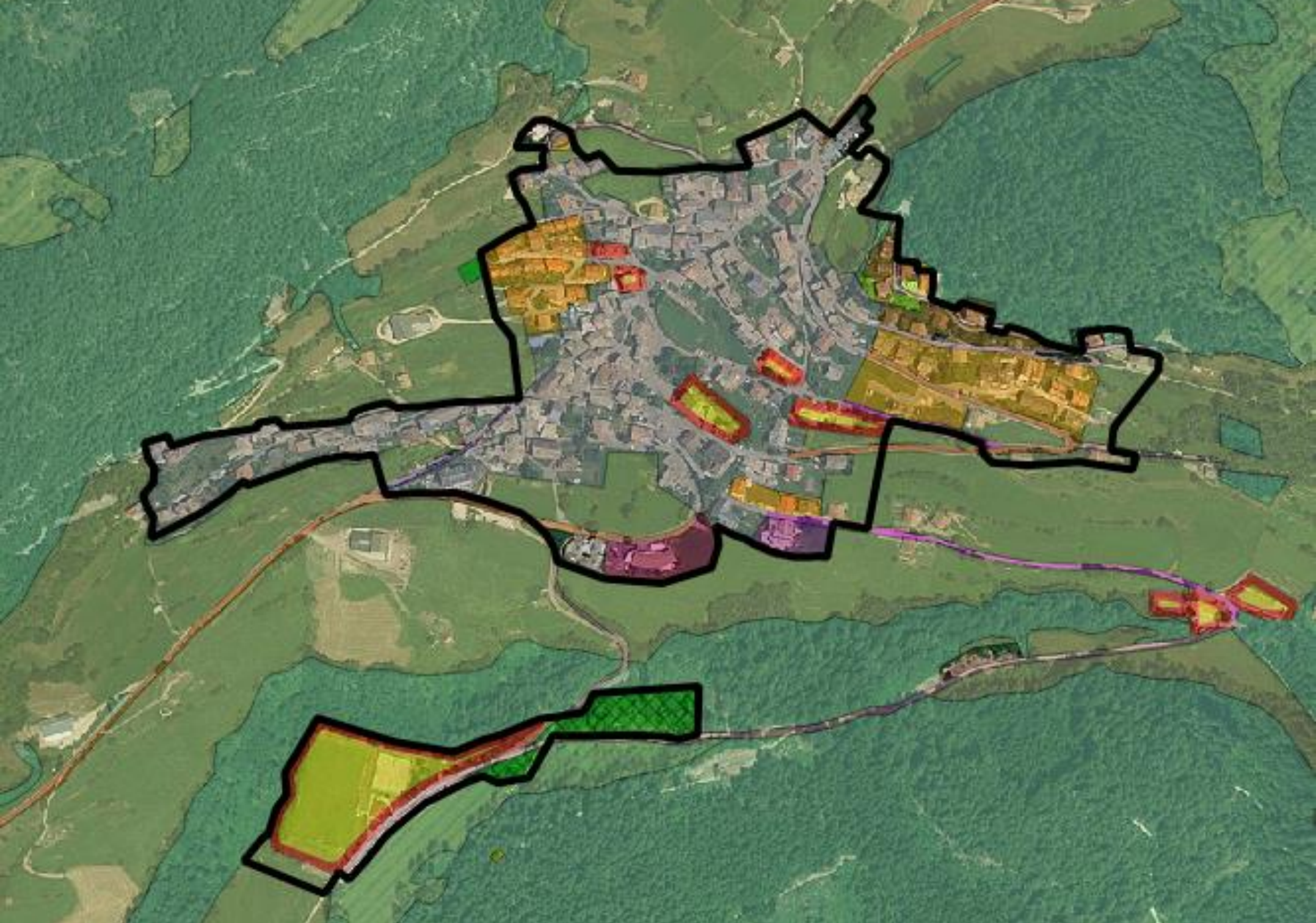
esecuzione dell'articolo 17, comma 6 della legge provinciale 10 luglio 2018, n. 9, recante "Territorio

Article no. 3

Objective

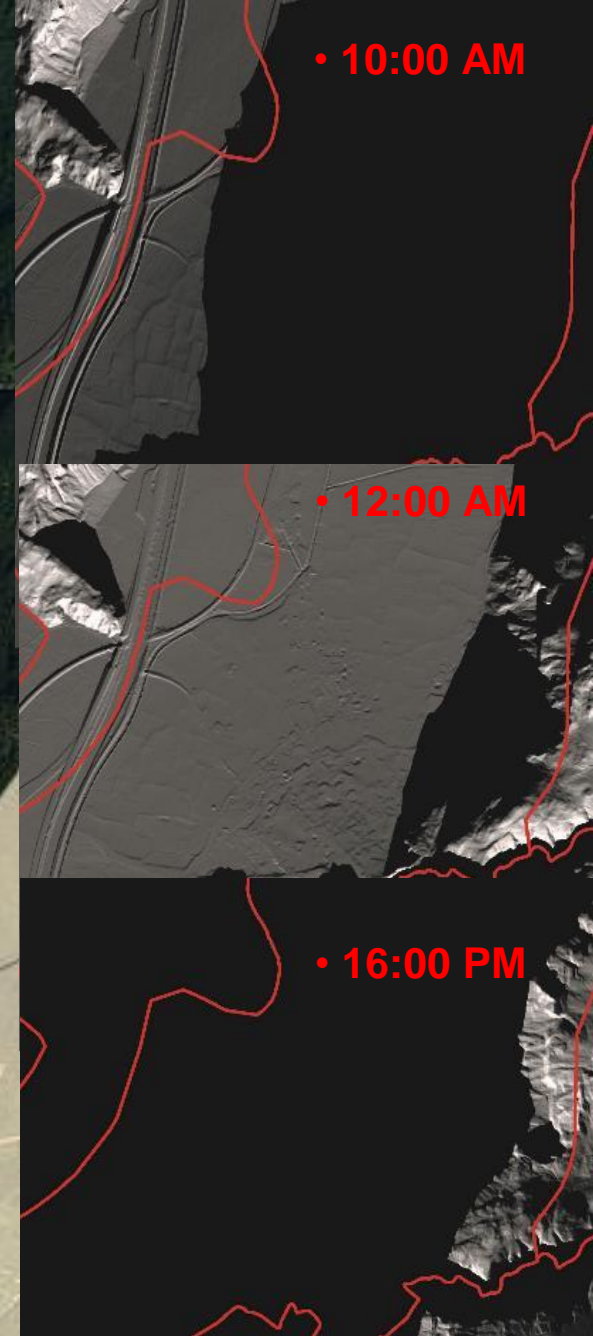
The objective of the delimitation of the settlement area is **the structural separation of the inhabited areas and of the non-settled landscape for the purpose of limitation and constant monitoring of soil consumption**





Article no. 4
Definition criteria

- Compact and continuous settlement structure
- Availability of Public Transport
- Services / infrastructures
- Sun exposure

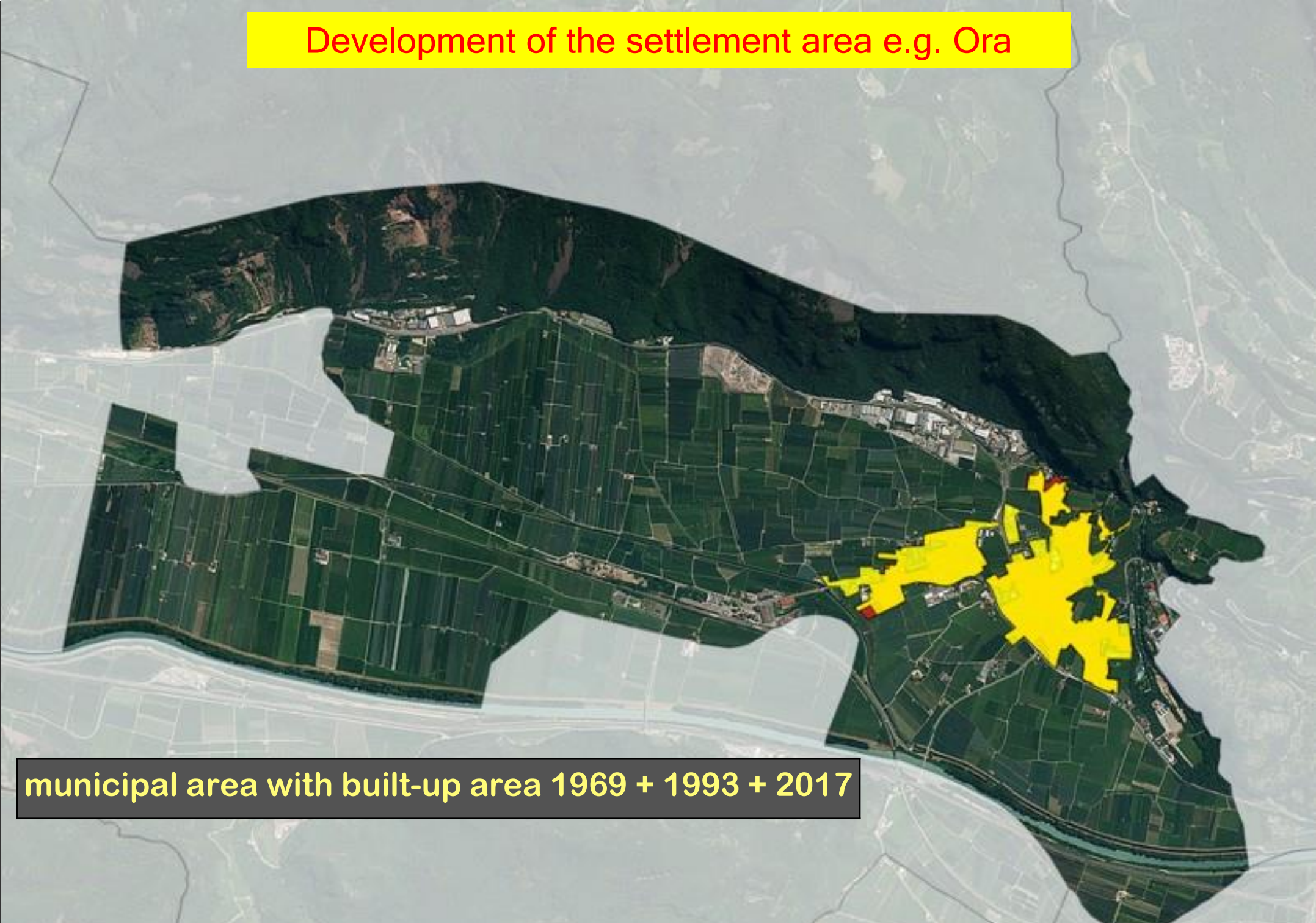


Development of the settlement area e.g. Ora



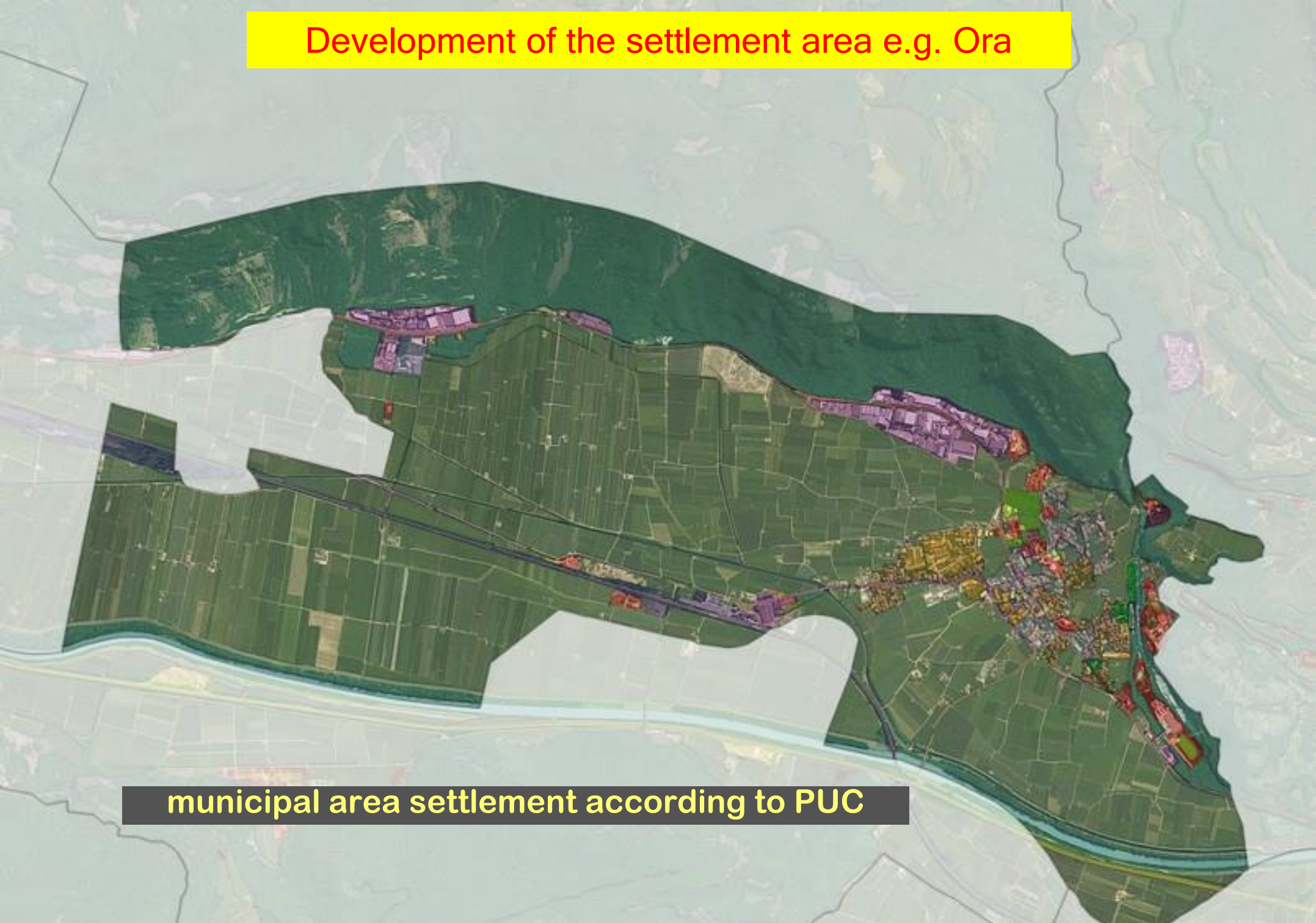
orthofoto 2014

Development of the settlement area e.g. Ora



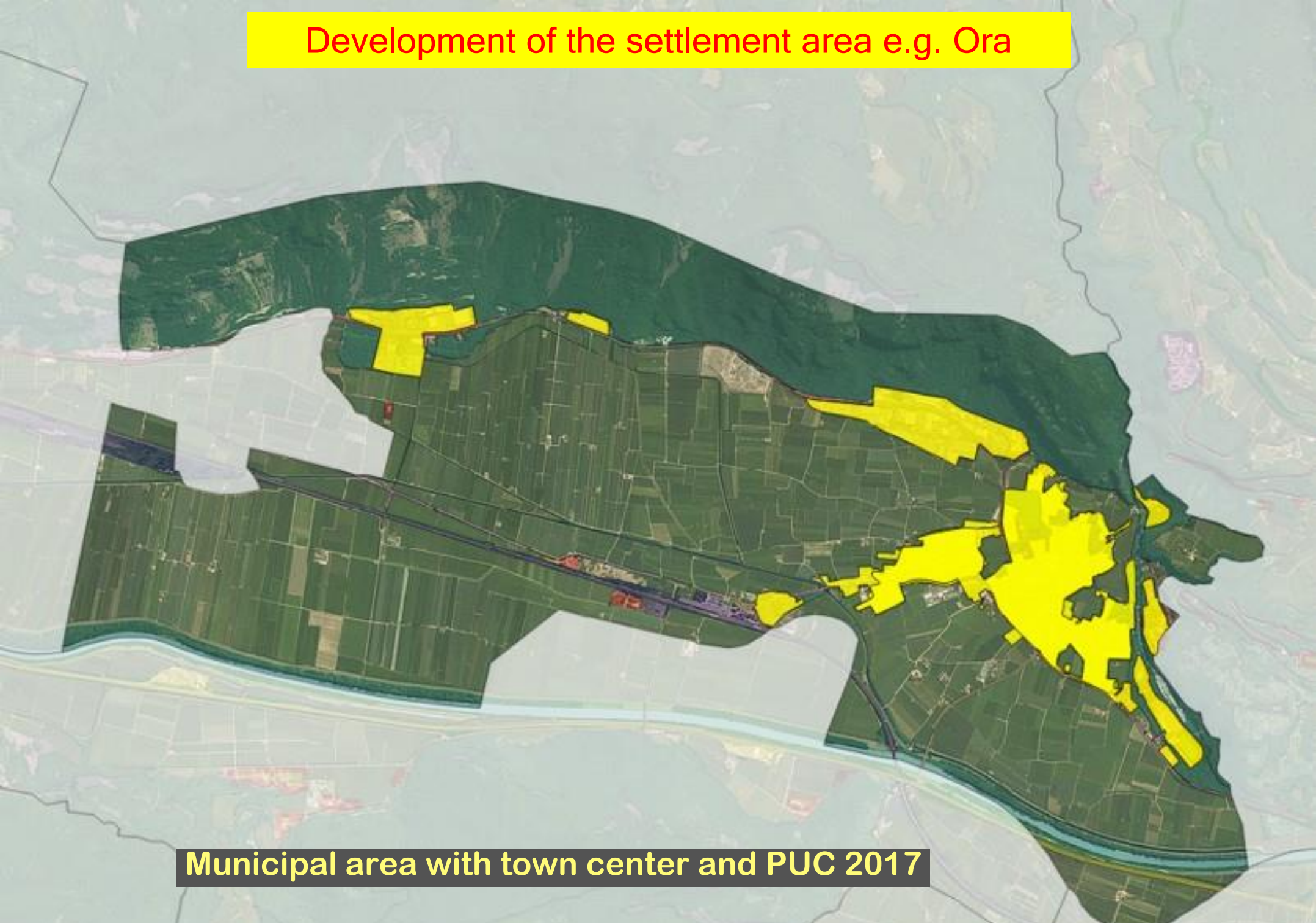
municipal area with built-up area 1969 + 1993 + 2017

Development of the settlement area e.g. Ora



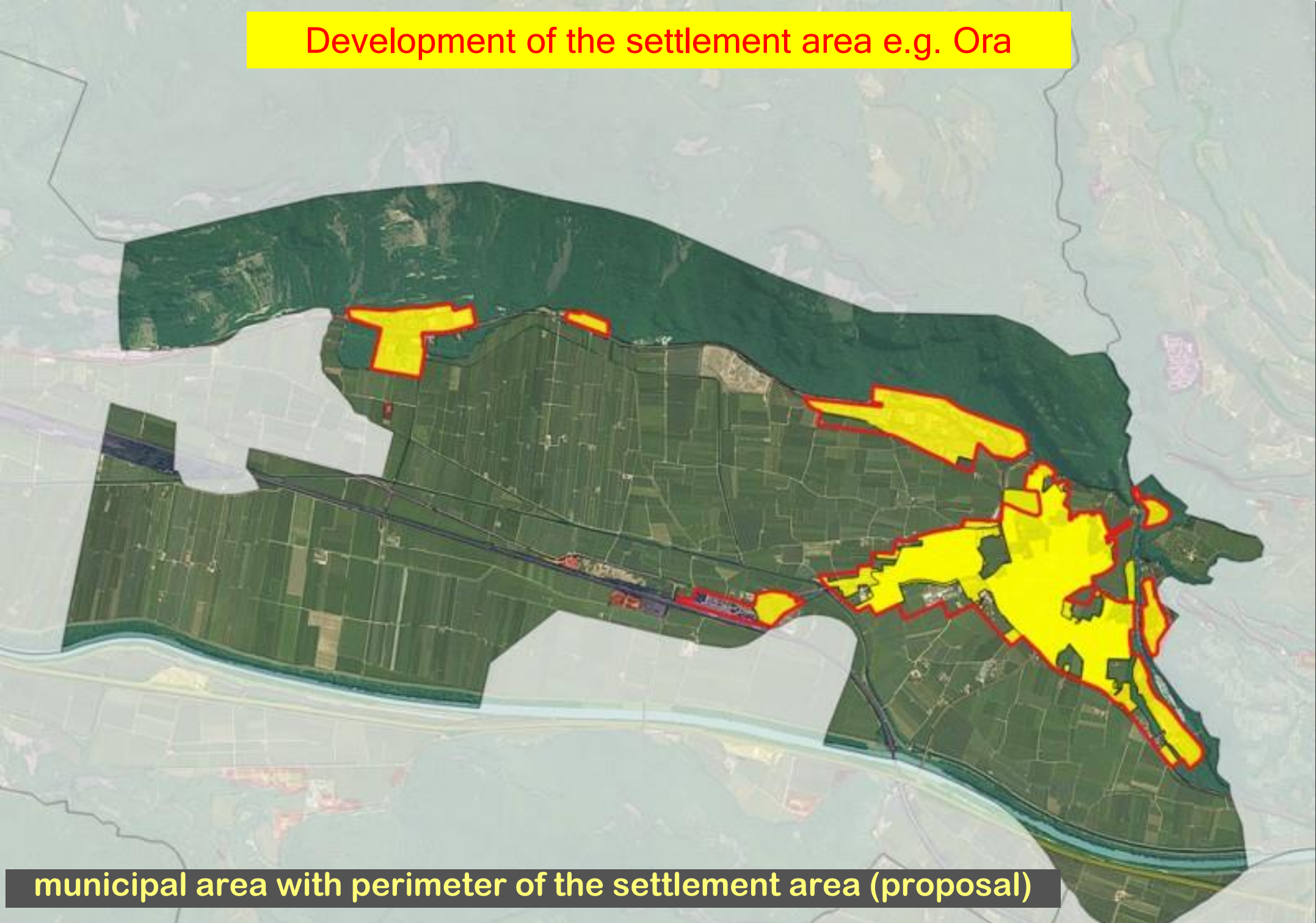
municipal area settlement according to PUC

Development of the settlement area e.g. Ora



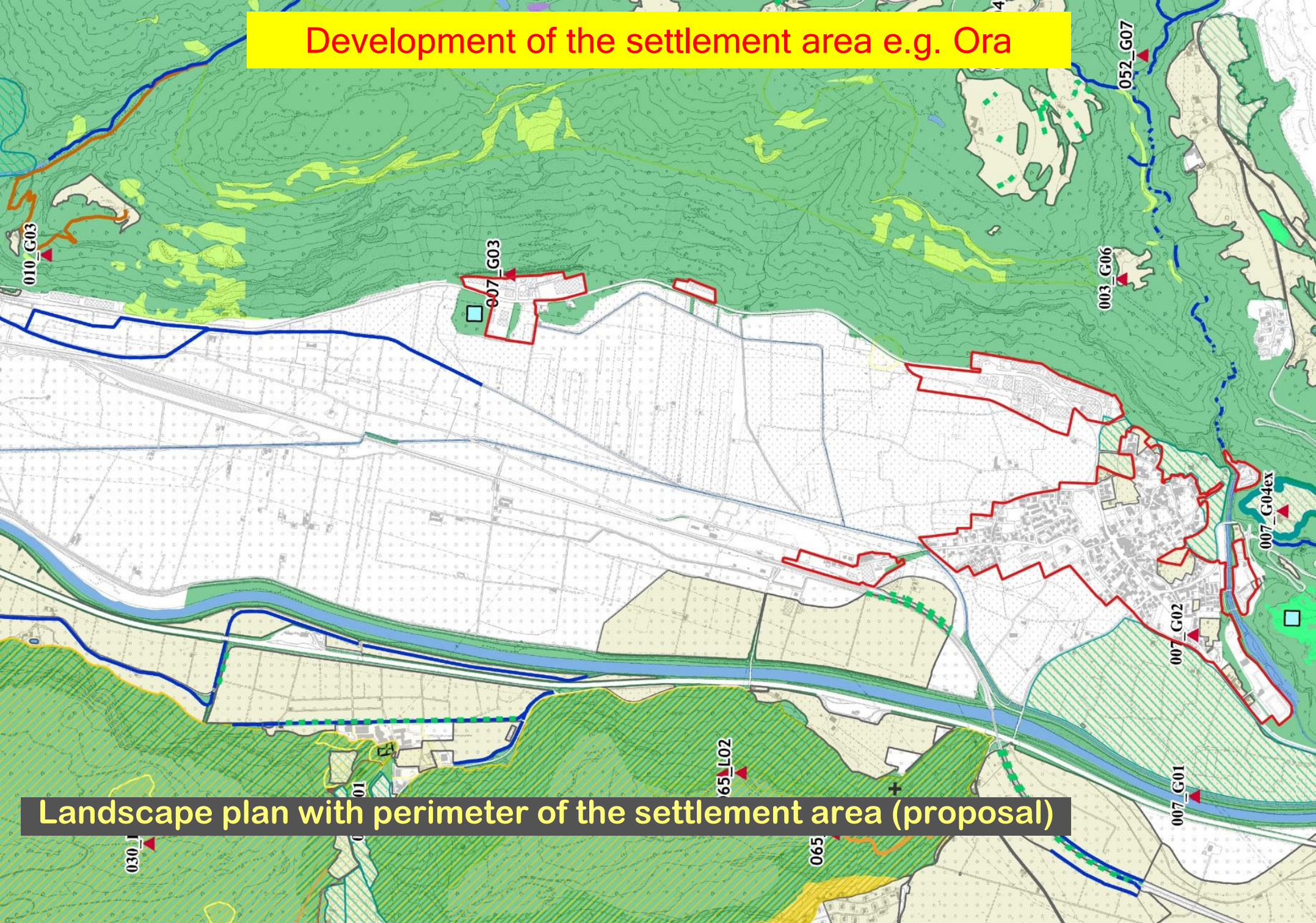
Municipal area with town center and PUC 2017

Development of the settlement area e.g. Ora



municipal area with perimeter of the settlement area (proposal)

Development of the settlement area e.g. Ora



Landscape plan with perimeter of the settlement area (proposal)

My conclusions 1

1. having limits to the built environment versus the free territory, introduces the discussion on how to save land and optimize its use.
how to regenerate ("landscaping") the areas that currently define the transition from urban to rural, often areas without qualities: typically a ring road, a viaduct, a storage area.
2. the will to protect the right of citizens to have access to open spaces for their well being and recreation. The right has to be physically visible and has to be considered a vital element of the planning process.
3. By implementing these measures, by default we arrive at creating compactness of the built environment.



My conclusions 2

4. in order to arrive at successful results a (holistic) inter-disciplinary approach is required. In contrast, the vertical application of disciplines (architecture, landscape planning, agriculture and economic interest) have remarkable shortcomings and they need to be mediated through a process of co-planning.

5 for sustainability purposes the interests need to be harmonised. we do not necessarily require trades-off between protectionists who have traditionally claimed conservation and protection and economic interest for commercial land development as an example. We ought to look at the interests of a large majority with a claim on the land for the well-being and recreation. This is what we understand as being the right to access to 'common pool resources' and a 'territorial justice', arriving at the optimal use of common resources that everyone is entitled to.



1 NO POVERTY

2 ZERO HUNGER

3 GOOD HEALTH AND WELL-BEING

4 QUALITY EDUCATION

5 GENDER EQUALITY

6 CLEAN WATER AND SANITATION

7 AFFORDABLE AND CLEAN ENERGY

8 DECENT WORK AND ECONOMIC GROWTH

9 INDUSTRY, INNOVATION AND INFRASTRUCTURE

GLOBAL GOALSCAST

· THE VOICE of a BETTER WORLD ·

10 REDUCED INEQUALITIES

11 SUSTAINABLE CITIES AND COMMUNITIES

12 RESPONSIBLE CONSUMPTION AND PRODUCTION

13 CLIMATE ACTION

14 LIFE BELOW WATER

15 LIFE ON LAND

16 PEACE AND JUSTICE STRONG INSTITUTIONS

17 PARTNERSHIPS FOR THE GOALS



Thank you for your attention
Grazie della vostra attenzione

