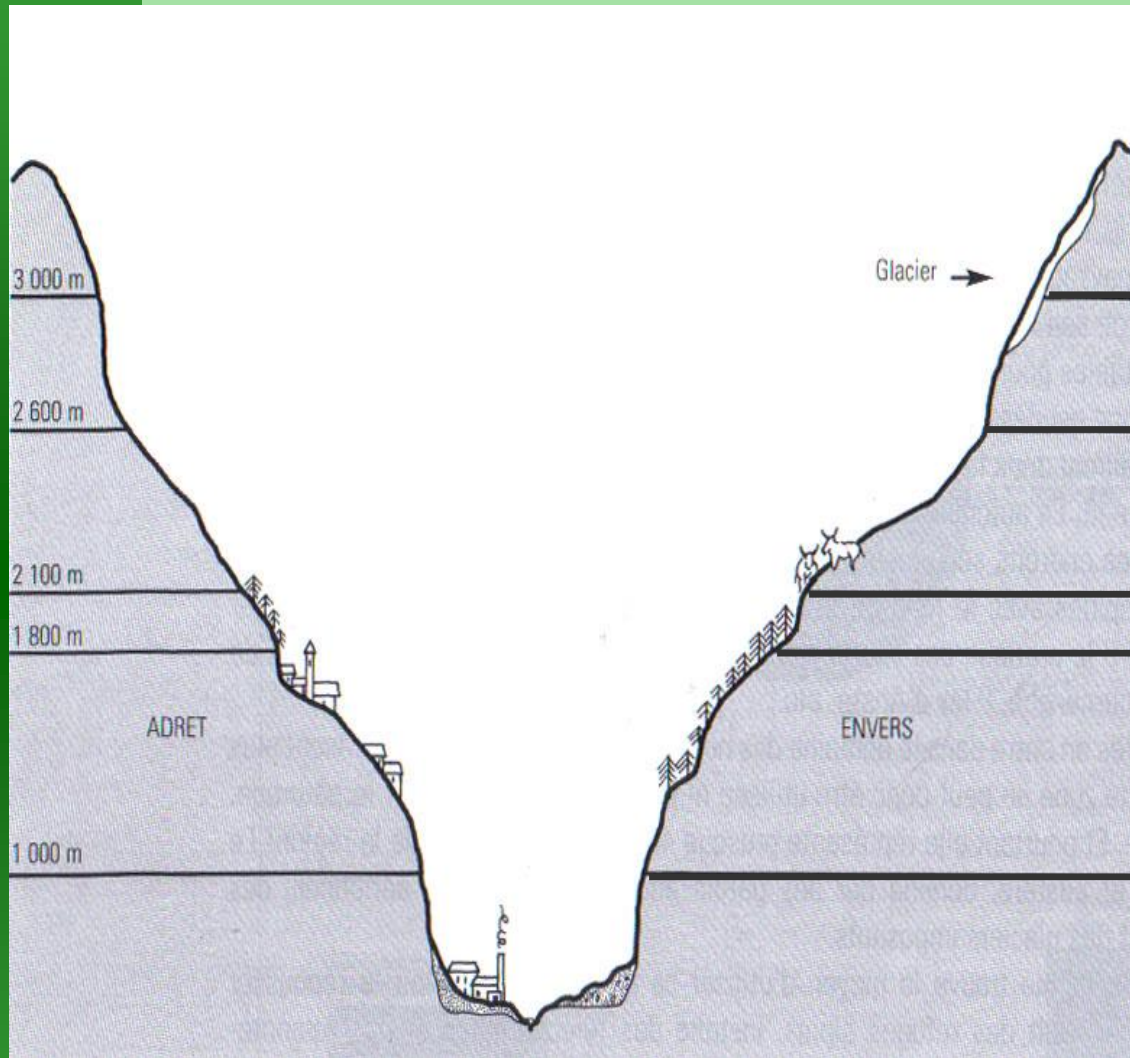


Environment and agriculture in Aosta Valley



Mauro Bassignana

Geomorphology of the Aosta Valley



Permanent snow
(frost: 310-365 d/year)

Rocks (frost : 270-310 d/year)

Pastures (frost : 220-270 d/year)

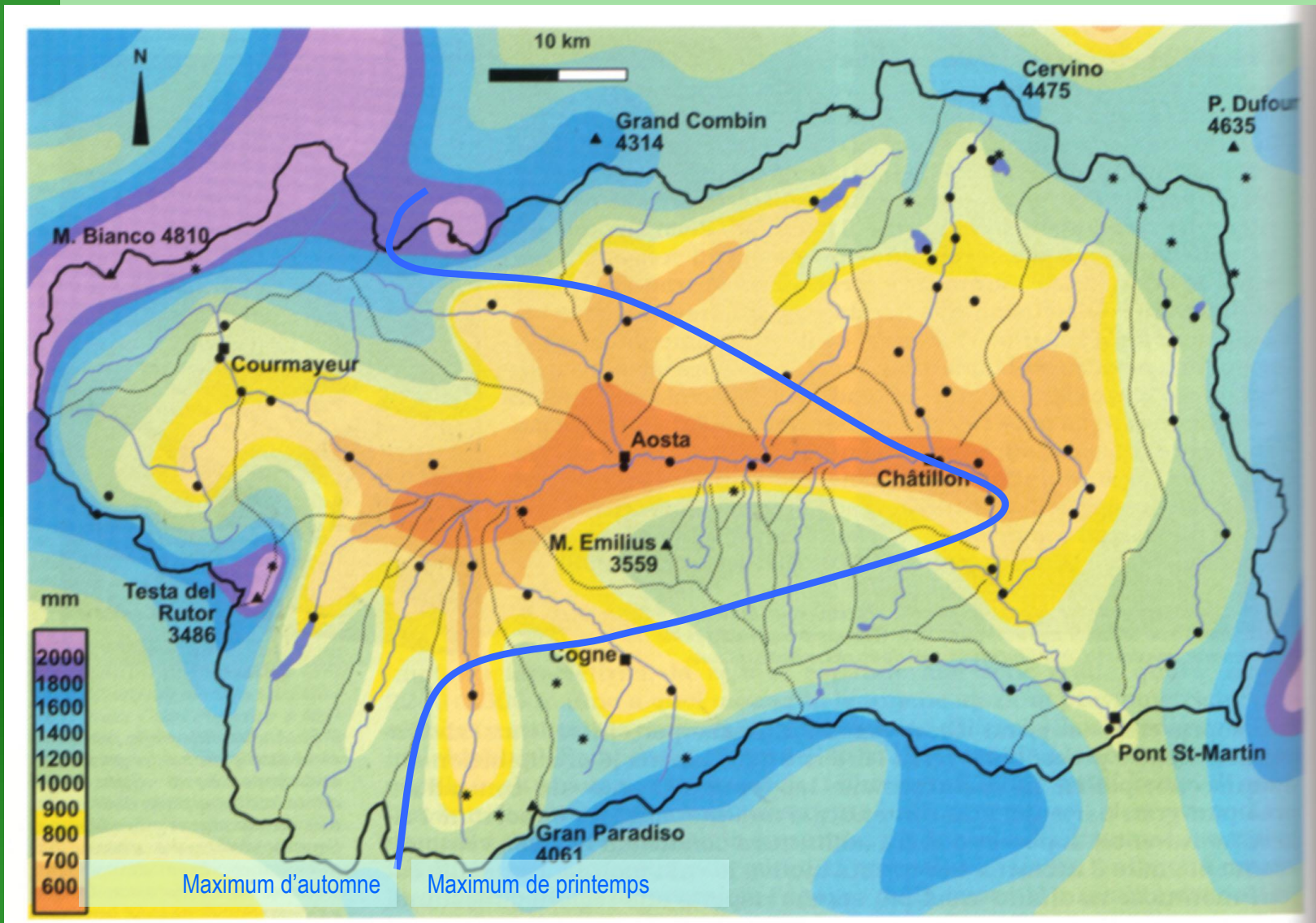
Woods (frost : 200-220 d/year)

Permanent villages of the Mountain (frost : 80-200 d/year)

Villages of the Plain
(frost : 50-80 d/year)

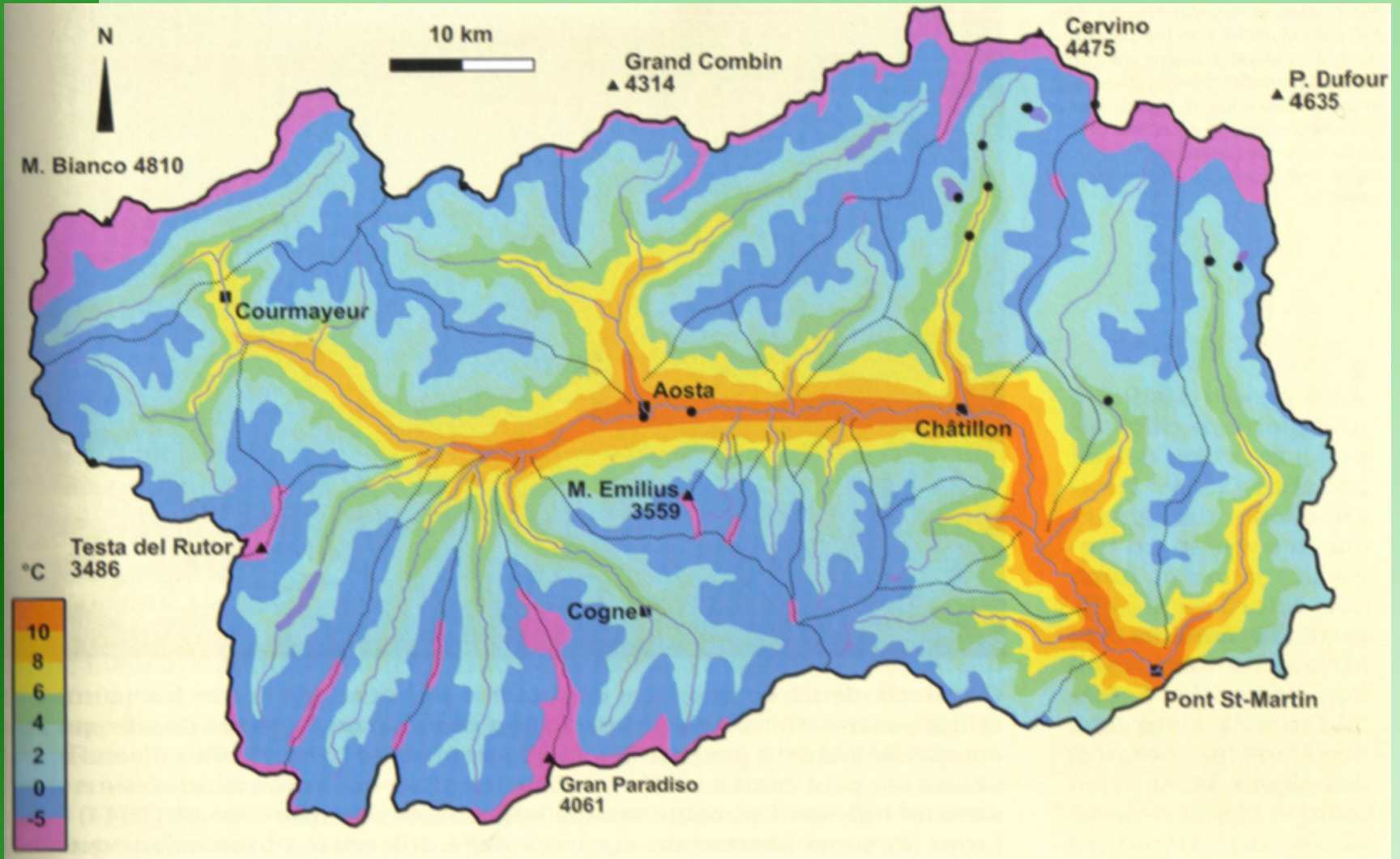
According to Cerutti, 2006

Annual rainfall in Aosta Valley



According to Mercalli, 2003

Average temperatures in Aosta Valley



According to Mercalli, 2003

Agriculture in Aosta Valley

Total regional area: \approx 325,000 ha

Agricultural Land : 55.400 ha, i.e. 17%

Δ 2010-2000: -15,800 (-22%)

Farms: 3.520

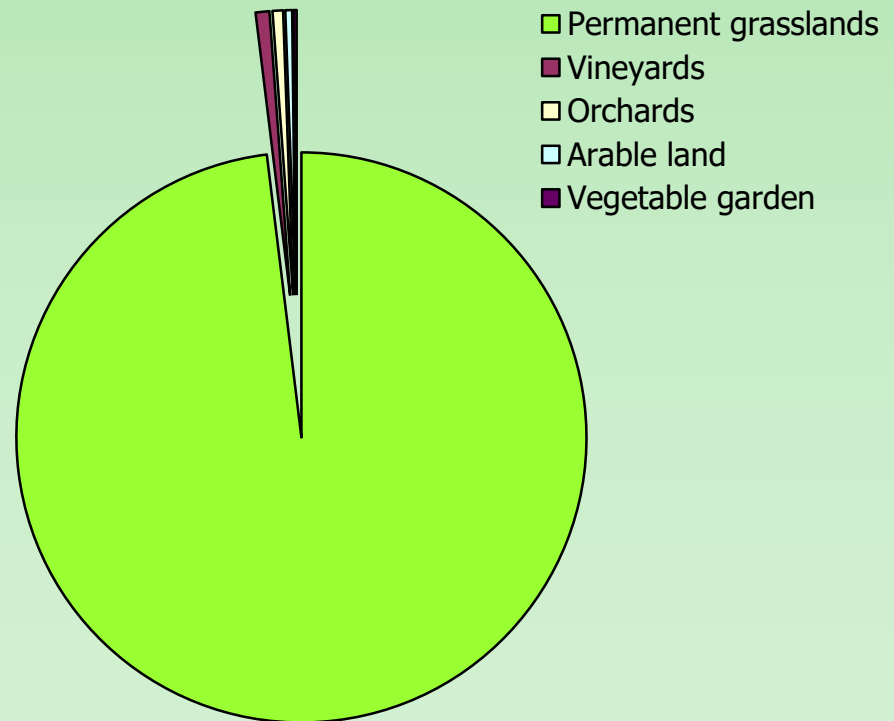
Δ 2010-2000: -2,461 (-41%)

AL/farm: 16 ha

Δ 2010-2000: +4 (+34%)

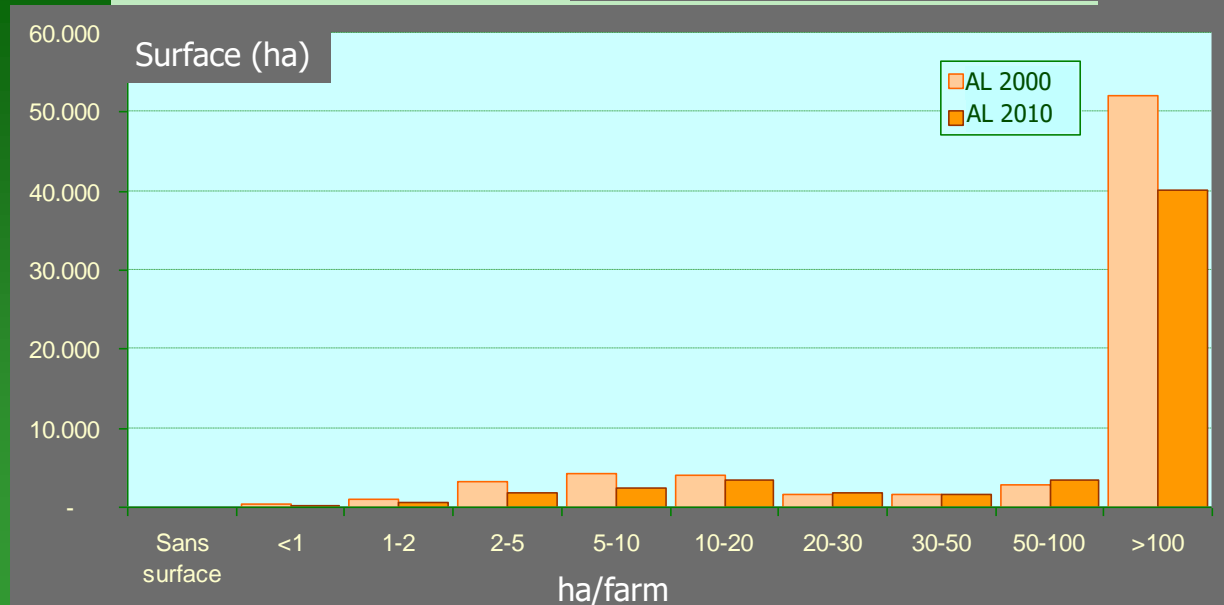
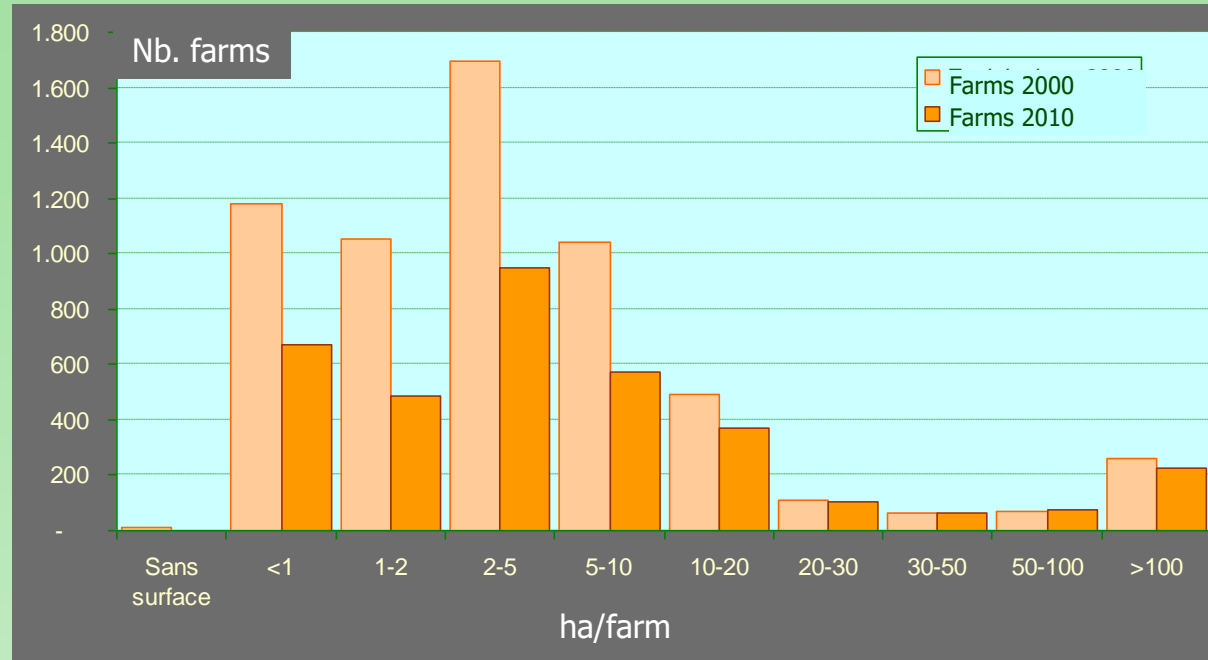
Agriculture in Aosta Valley

Crops	Surface (ha)	(%)
Permanent grasslands	54,310	98.1%
Vineyards	432	0.8%
Orchards	329	0.6%
Arable land	213	0.4%
Vegetable gardens	101	0.2%



Agriculture in Aosta Valley

Dimensional classes
of farms



Animal Breeding in Aosta Valley

Cattle: **33,000** heads (Dairy Cows \approx 50%)

Δ 2010-2000: -5,900 (-15%)

Cattle farms : **1,200**

Δ 2010-2000: -400 (-26%)

Average: **28** Cattle/farm

Sheep+Goats: **2,300+3,500**

Δ 2010-2000: +40 (+2%) and +130 (+4%)

Sheep+Goats farms: **129+224**

Δ 2010-2000: -40 (-24%) and -60 (-21%)

Average : **17** sheep/farm and **16** goats/farm

Cattle farming in Aosta valley

Local breeds:

Aosta Red Pied: 4.000 l/y

Aosta Black Pied: 3.200 "

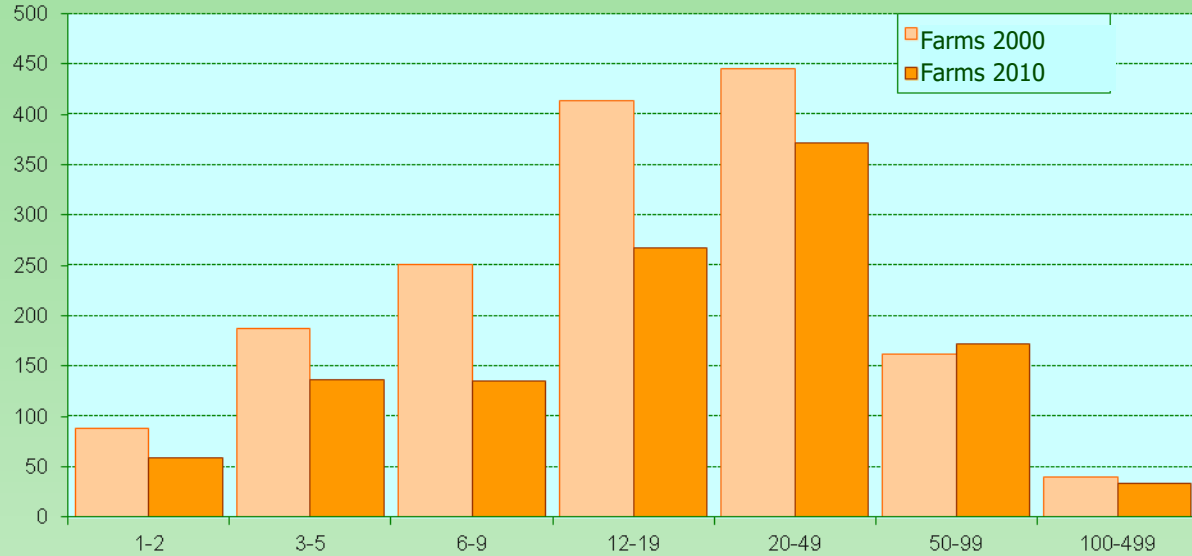
Aosta Chestnut: " "



Cattle farming in Aosta valley

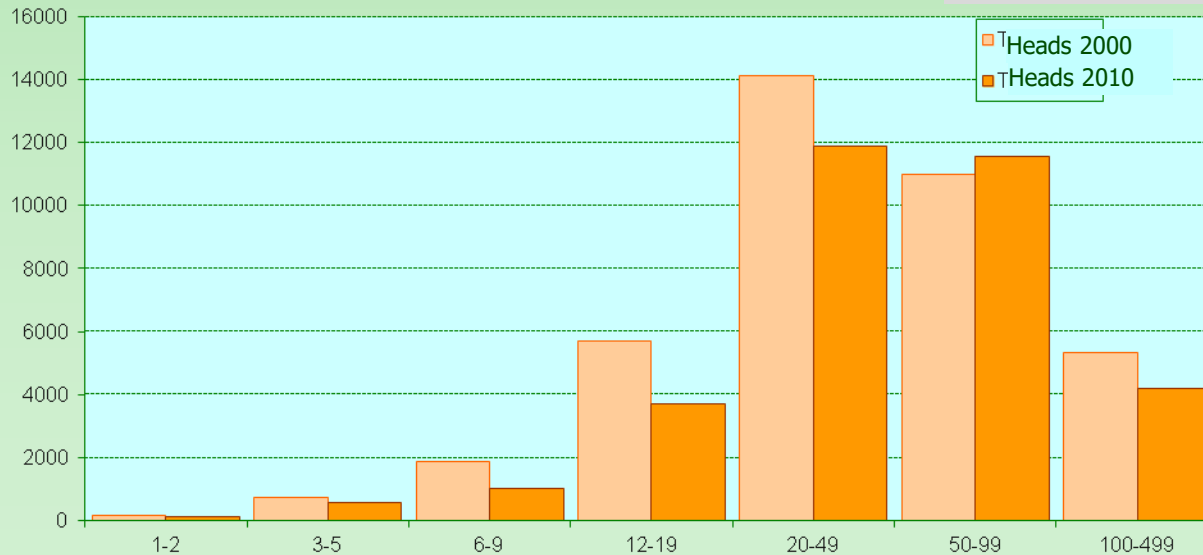
Dimensional classes
of cattle farms

Nb. farms



Heads

Nb. heads/farm



Nb. heads/farm