

# Mapping the vulnerability of mountain peoples to food insecurity

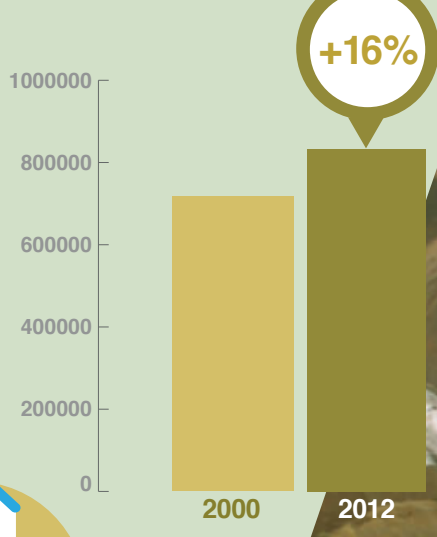
A geographic and demographic picture of the world's mountain areas assessing the vulnerability to food insecurity of mountain dwellers in developing countries.

**1 in 3** mountain people in developing countries is facing hunger and malnutrition.

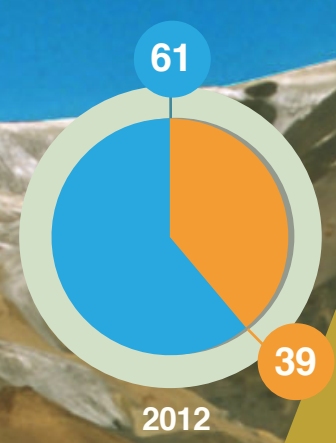
Since 2000 the number of people vulnerable to food insecurity in the mountains has **increased**.



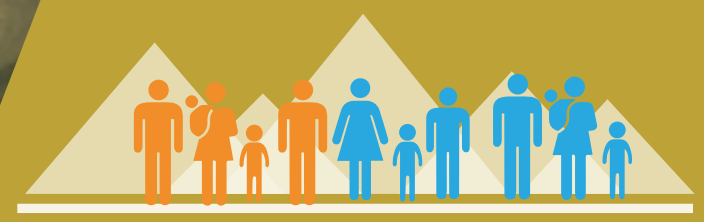
Total mountain population in developing countries



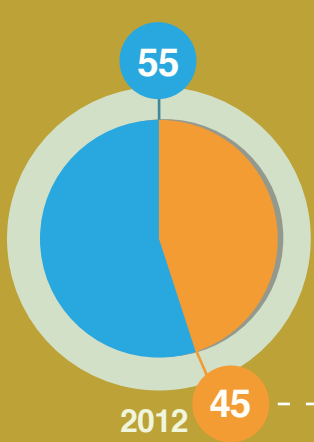
Total mountain population (%)



The number of people vulnerable to food insecurity in the mountains has risen at a higher rate than population growth in the same regions.

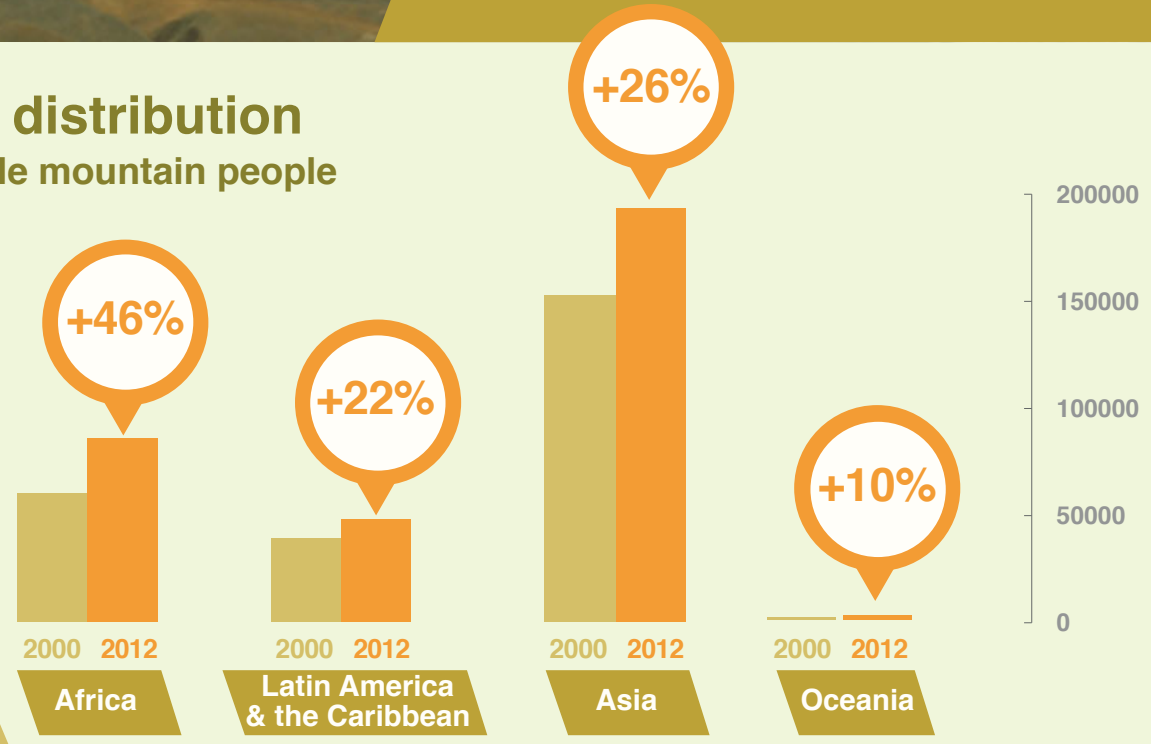


Rural (%) mountain population



Almost half of the people who live in rural mountain areas are vulnerable to hunger.

Regional distribution of vulnerable mountain people



These results are a clear call to action for policy makers and resource partners. Mountain peoples can no longer be neglected. Investments, specific policies, capacity-building programmes and more research are needed to lift mountain peoples out of hunger and poverty.



[fao.org/forestry/watershedmanagementandmountains](http://fao.org/forestry/watershedmanagementandmountains)



Food and Agriculture Organization of the United Nations



©FAO, 2015  
BC284e/1/12.15