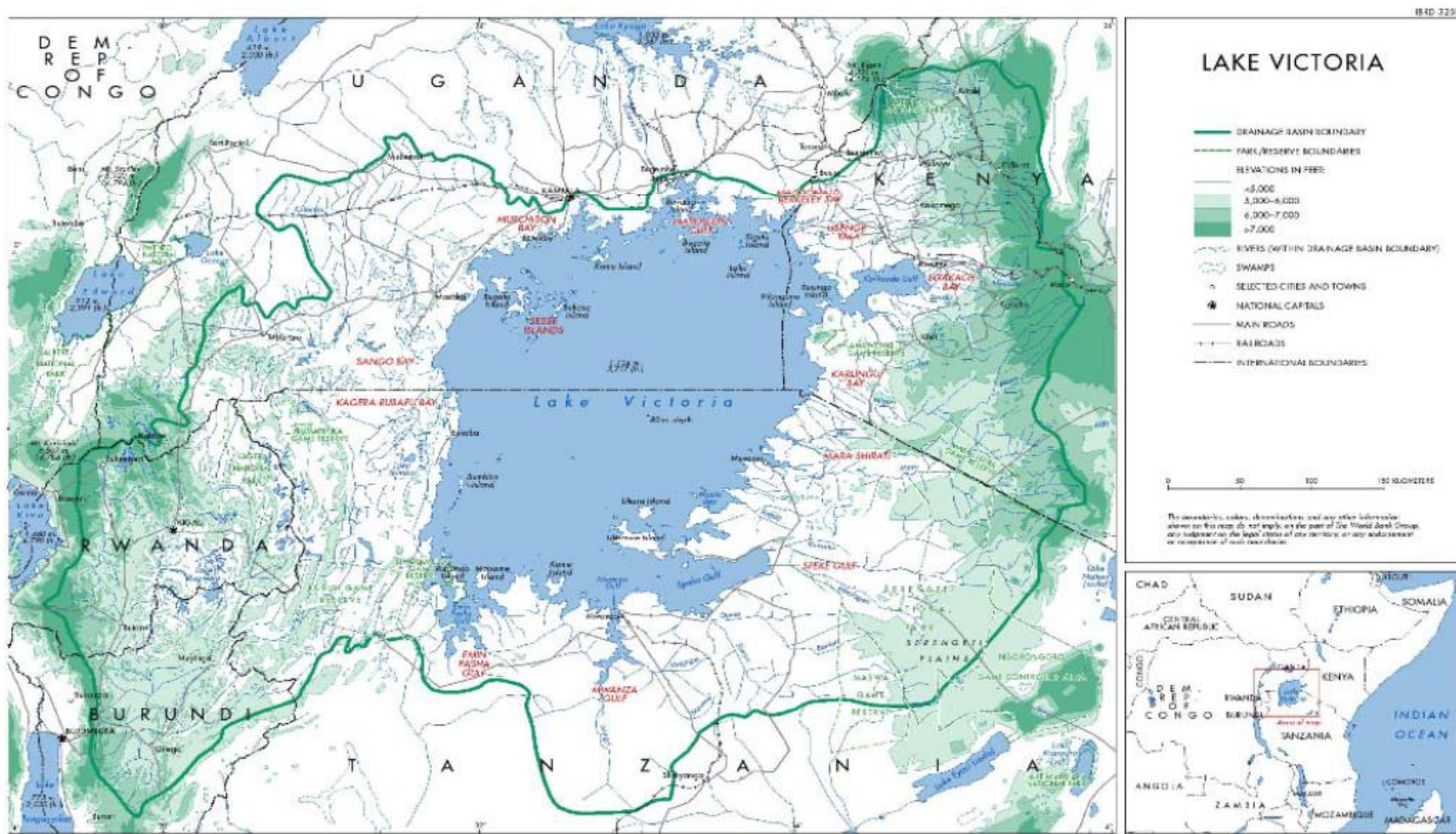


# GEOGRAPHIC LOCATION





# 1. Introduction...

- 
- Rwanda is divided into two major water basins divided by a water divide line/ridge called Congo-Nile Ridge; to the West of this line lies the Congo River Basin which covers 33% of the national territory, whereas to the East lies the Nile River Basin (LVB) covering 67% of the territory and provides about 90% of the national waters.
  - Rwandan waters flow to the Lake Victoria through the Akagera River which is the main tributary to the Lake Victoria which bears the outlet of the Nile. Akagera River contributes 9 to 10% of the total Nile waters.
  - The LVB provides also the bulk of the national water supply.

## Nyabarongo River and its watershed...



## Nyabarongo River and its watershed...



## LVEMP II follows LVEMP I and its Objectives are to ....

---

- ❑ Improve the management of Trans-boundary LVB resources;
- ❑ Protect targeted sensitive ecosystem in LVB;
- ❑ Reduce water pollution of the LVB, and
- ❑ Enhance public participation and communication.



## **LVEMP II will have four main components ...**

---

1. Strengthening institutional capacity for managing shared water and fisheries resources;
2. Point sources pollution control and prevention;
3. Watershed management;
4. Project coordination and management.



## High level Objective of LVEMP II is to contribute to LVB Vision/Strategy ...

---

*“a prosperous population living in a healthy and sustainably managed environment providing equitable opportunities and benefits”*

Its main Vision/Strategy development objectives:

- Shared economic growth
- Poverty eradication
- Healthy LVB ecosystem



# **1. Strengthening institutional capacity for managing shared water and fisheries resources ...**

---

Its objectives are to:

- (i) Improve the effectiveness of key regional and national institutions through harmonization of national policies, and standards;
- (ii) Develop regional frameworks for the management of key trans-boundary natural resources – water and fisheries;
- (iii) Develop options for sustainable financing of the natural resources interventions.



# 1. Strengthening institutional capacity for managing shared water and fisheries resources ...

---

*This component will focus on strengthening the existing institutions to improve the cooperative management of shared transboundary NR of the LVB, and hence contribute to the achievement of the first PDO/GEO.*

It will have two sub-components:

- a) Harmonization of policies, and regulatory standards;
- b) Ecosystem monitoring , and applied research.

## **2. Point sources pollution control and prevention ...**

---

Its main objective is to:

Reduce environmental stresses in targeted pollution hotspots and selected degraded sub-catchments within the Lake Victoria Basin through the implementation of mitigation and prevention measures, thus contributing to the achievement of the second PDO/GEO.



## **2. Point sources pollution control and prevention ...**

---

It will have three sub-components:

- a) Planning for sewerage system and waste water treatment facilities;
- b) Promotion of cleaner production technologies.

## 3. Watershed management ...

---

*This component seeks to reduce environmental stresses from the LVB, through the implementation of non-point sources of pollution mitigation and prevention measures, thus directly contributing to the achievement of the second PDO/GEO.*

Its objectives are to:

- (i) Identify high priority areas and hotspots for direct intervention, while catalyzing resources to control point-sources and non-point sources of pollution in the priority hotspots and sub-catchments of LVB;
- (ii) Scaling up watershed management practices;
- (iii) Improve water-use efficiency.



## 3. Watershed management ...

---

It will have three sub-components:

- a) Restoration of wetlands and of riparian vegetation;
- b) Rehabilitation of hillside areas for production and conservation;
- c) Community driven development for livelihoods improvement.

## **4. Project coordination and management ...**

---

Its objective is to provide resources necessary for the effective coordination, management, and monitoring and evaluation of the project activities.

It will have two sub-components:

- a) Project coordination and communication;
- b) Monitoring and evaluation.

## **LVEMP II implementation arrangements are two-prong ...**

---

### **A. At regional level:**

- **Regional Policy Steering Committee (RPSC) – comprising Permanent Secretaries of the National Focal Point Ministries;**
- **Regional Project Coordination Team (RPCT) mainstreamed in the Lake Victoria Basin Commission (LVBC) Secretariat responsible for regional coordination of the project;**



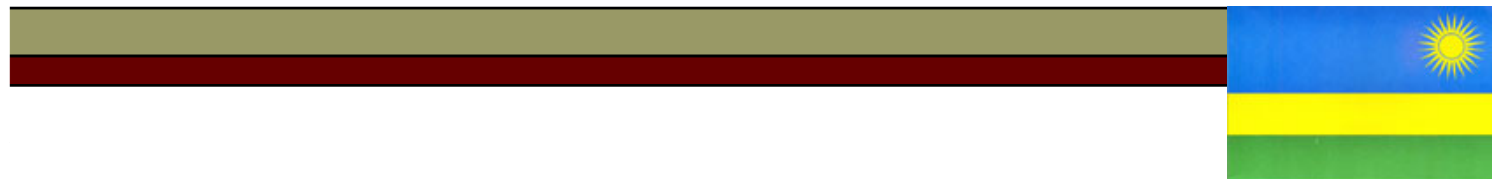
## LVEMP II implementation arrangements are two-prong ...

---

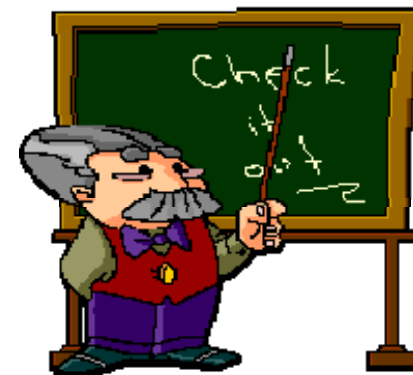
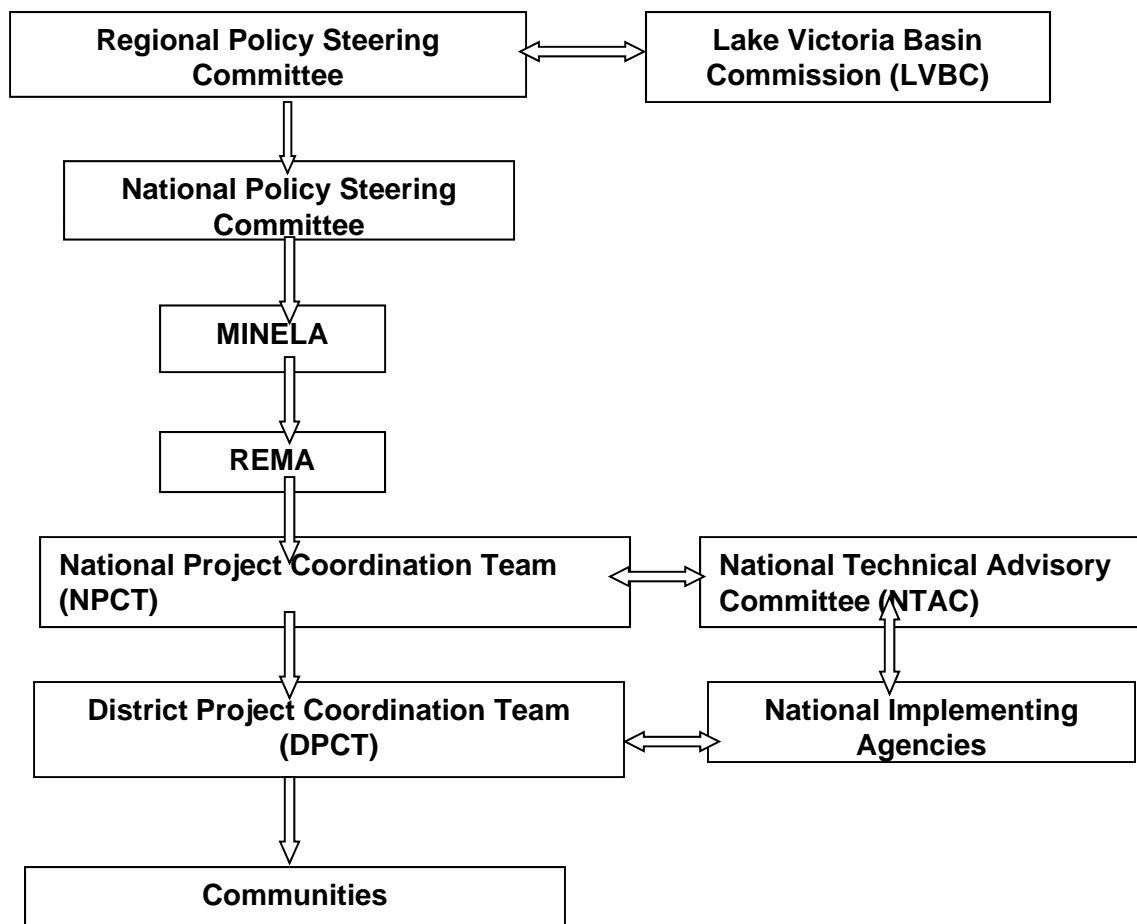
### **B. At national level:**

- **National Policy Steering Committee (NPSC)** – Comprising Permanent Secretaries from actively involved line ministries;
- **National Project Coordination Team (NPCT)** – comprising Project Coordinator, administrative staff and technical experts;
- **National Technical Advisory Committee (NTAC)** – comprising technical experts from main implementing ministries/agencies mainstreamed in the National Focal Point Ministries (NFPs), research and academic institutions, private sector and NGOs





## LVEMP II implementation arrangements are two-prong ...





---

**THANK YOU FOR YOUR ATTENTION**

