



# Vi-LIFE(SCC-Vi ) Programme Rwanda Brief Presentation to Kagera TAMP

By Jean Marie RUKUNDO

Rwanda, Kigali

17-18 March 2011

E-mail: [rukujean2000@yahoo.fr](mailto:rukujean2000@yahoo.fr)



# Introduction

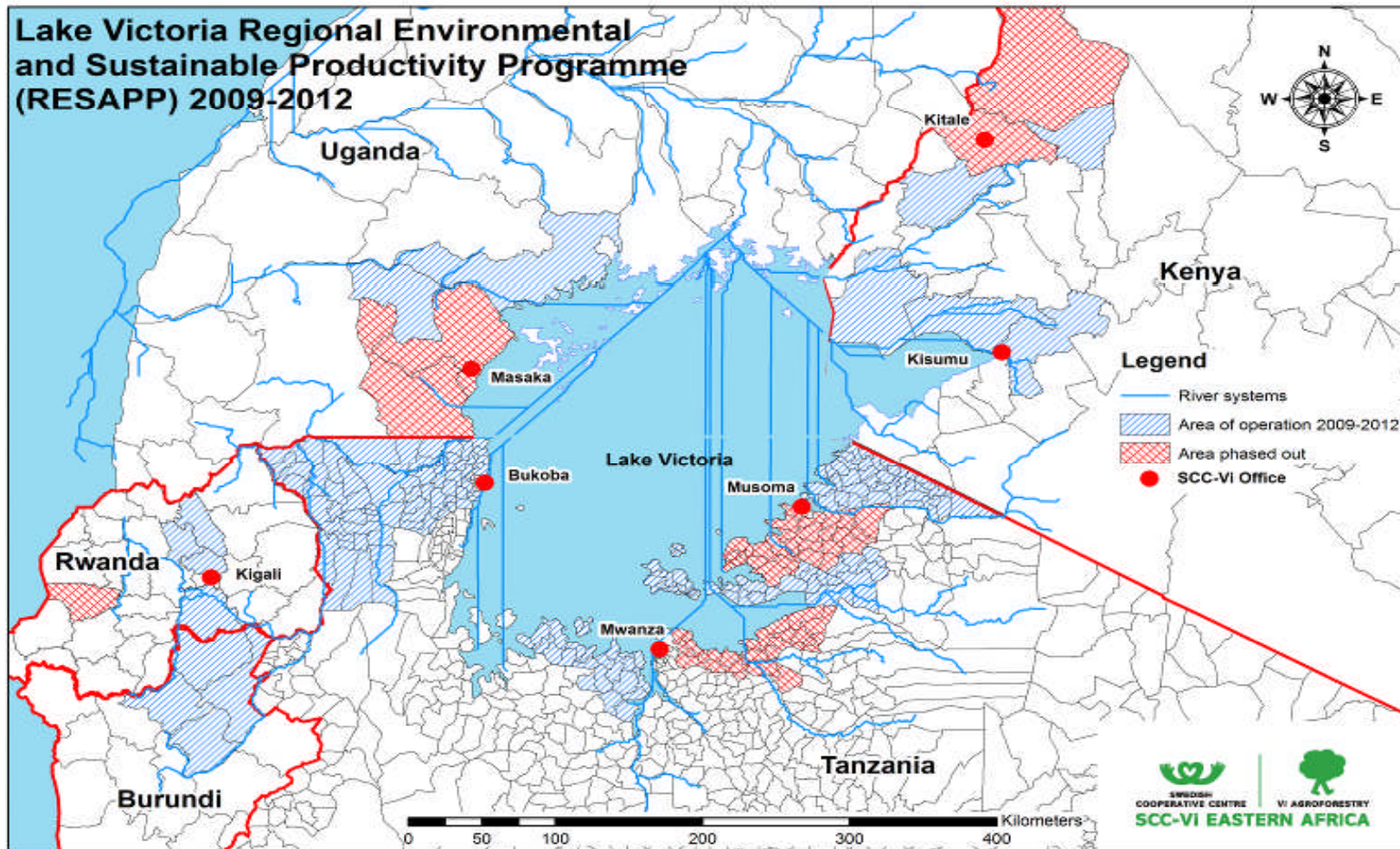
SCC-ViAF is registered in Rwanda as Vi-LIFE Programme

It is a Swedish non-governmental and non-profit organization working in Rwanda as a chapter of the Lake Victoria Regional Environmental and Sustainable Agriculture Productivity Programme (RESAPP).

Funded under Swedish International Development Authority (Sida), Swedish Cooperative Centre (SCC) and Vi Agroforestry (ViAFP). The programme area is divided into 6 projects in 4 countries: Kenya, Rwanda, Tanzania and Uganda). Operational in Rwanda since 2005.

Actions are focused in sustainable use of natural resources and poverty reduction in the countries through technical advisory services in agroforestry, sustainable agriculture production, farm enterprise development, rural financial services and climate change adaptation and mitigation.

# RESAPP location: 2009-2011





# Cont'

- **Vi-LIFE's Vision**

A sustainable environment offering good living conditions for farmer families.

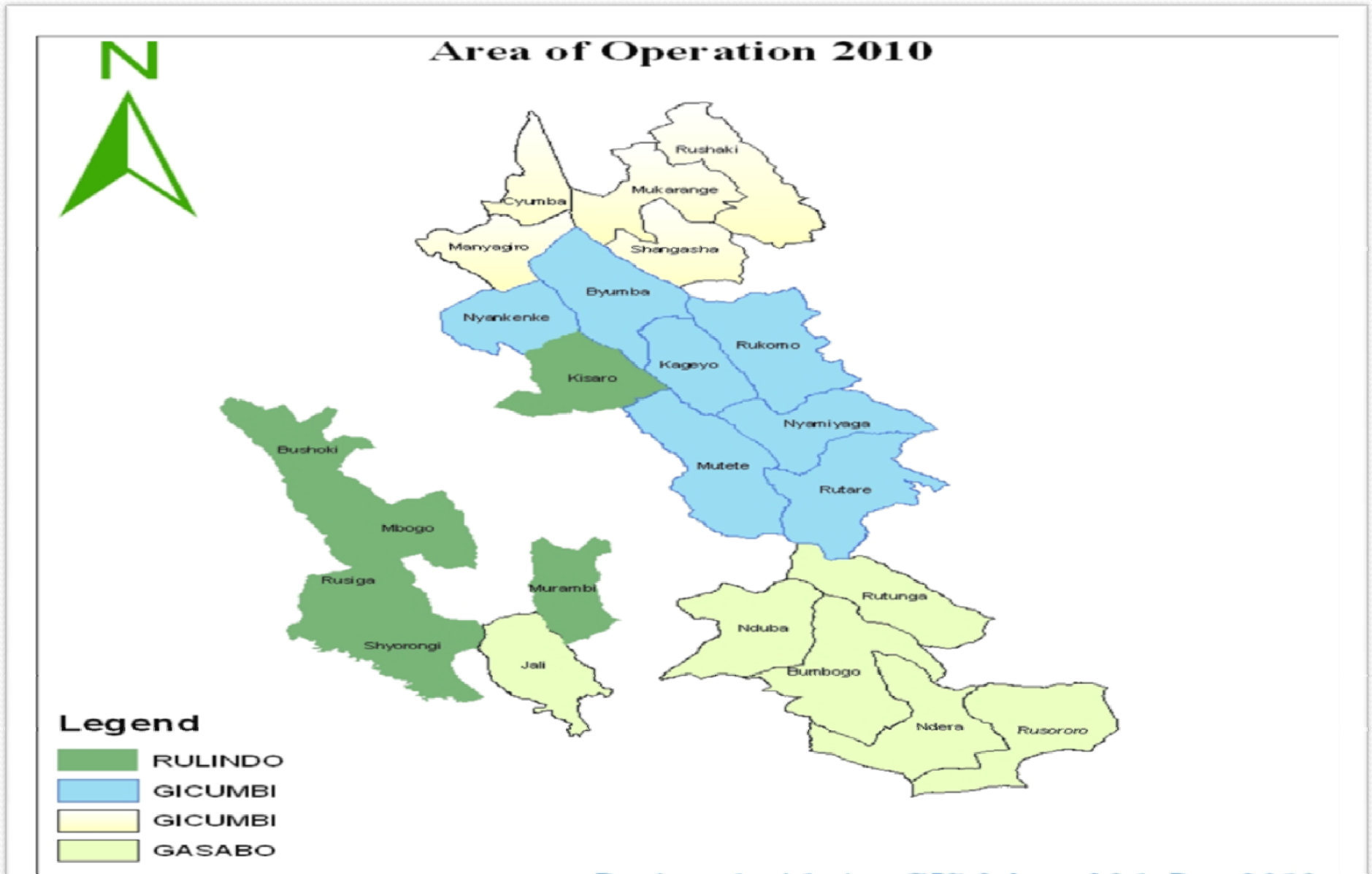
- **Vi -LIFE's Mission**

To make agroforestry and enterprise development engines of economic growth and poverty reduction

- **Target group**

Women, men and young people who are farmers, living in households that cultivate land holdings equivalent to one hectare or less

# PROJECT AREA-Rwanda





# Development objective

- "Improved living conditions for 150,000 (25,000 for Rwanda) farmers households through sustainable use of natural resources within the Lake Victoria Basin by 2011"

Five major components addressed:

- Land use, environment and climate change
- Farm Enterprise Development
- Farmers groups and demand-driven advisory services
- Capacity building and training
- Lobby and advocacy work



## Cont'

- And Gender mainstreaming , Hiv/AIDS as cross cutting
- **Carbon project:** Small holders farmers received payment for ecosystems services from agroforestry, agriculture and soil carbon thereby increased income and food security with 2 projects :Western Kenya: BioCarbon Fund project and Plan Vivo certifiert project in Tanzania

## Achievements' RESAPP 2009-2011

- RESAPP planned to work with a total of **150,000 households** of them **25,000 HHs** in Rwanda and around **3,000 farmers groups** of them **438 farmer groups** in Rwanda.
- The project was able to recruit and to work with **17,953\* households** and **400\* groups**.
- There are **286\*** groups involved in VSLA and **55** community facilitators involved (\*Rwanda)



# Achievements cont'

## 1. Households' capacities to adopt SLM practices enhanced

- **6478 Households** are adopting SLM practices, the practices ranged from animal husbandry, soil nutrient management, agro forestry tree establishment, soil and water management to crop management (Progressive survey, August 2010).
- **4,676 Households** supported in creating anti erosion ditches.



## SLM cont'

- **824,078** long term trees planted
- **332413** m of short term trees planted- nitrogen fixing trees in **hedgerows/alley** and on **boundary**
- **232,461** fruit trees planted(grafted avocado and Orange trees)
- **341.22** Hectares of radical terraces built and managed
- **3321** households using compost/FYM(making and use of compost -leaves, weed and other organic household waste decomposted).
- **982** Hhs trained on crop managements( e.g: IPM,..)

# SLM cont'

Roof water harvesting at home  
level:853 Hhs vs 1391 Hhs

Water harvesting at school level: 11  
schools



Use of plastic sheet      Pupils using rain water for tree nursery watering

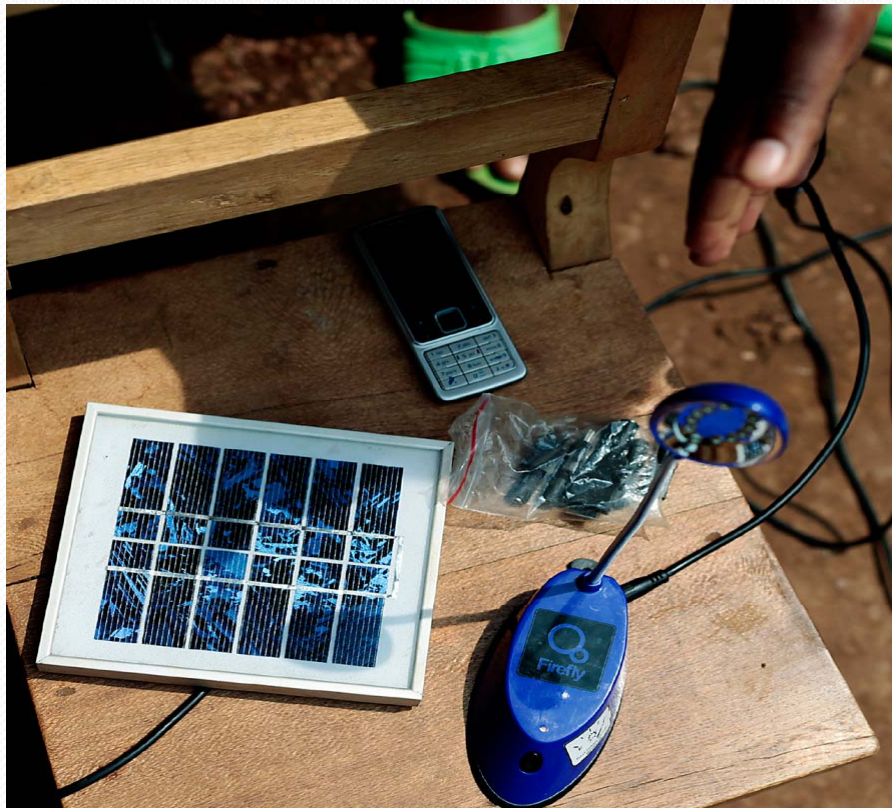
# 1.2 Sustainable energy production & Use

- **13625** Households are sensitized and trained on climate change mitigation and adaptation measures
- **987** farmers are aware of the use renewable energy

# Sustainable energy production & Use

cont'

Solar panels generate energy to light lamps and charge cellphones: 262 solar lamps distributed in 2010



Biogas use for cooking: 48 model farmers in collabolation with NBDP in 2010



# Sustainable energy production & Use cont'

Training on improved  
charcoal production

Training on improved  
charcoal production : 212  
charcoal makers in 2010

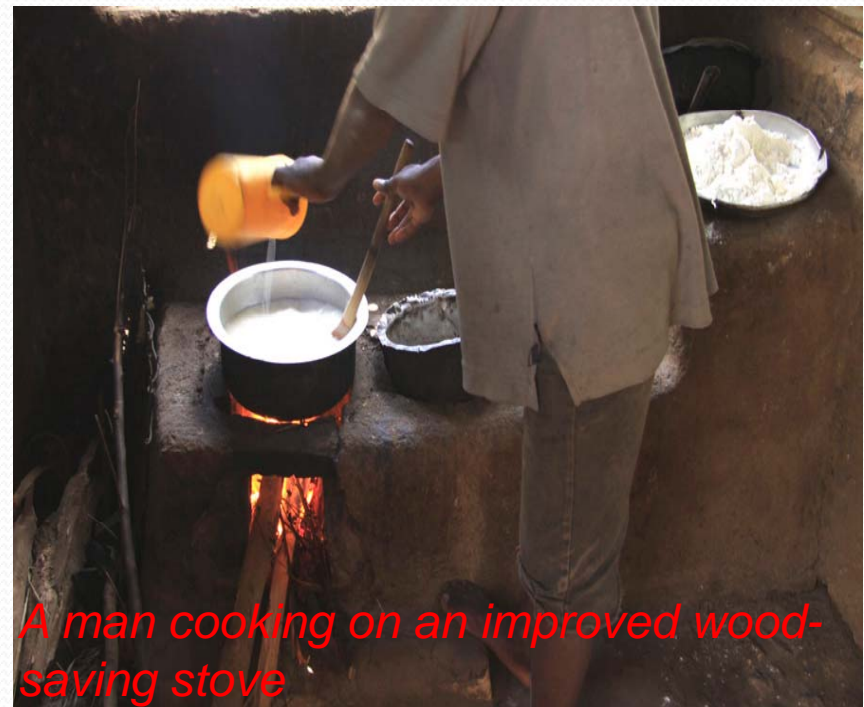


# Sustainable energy production & Use cont'

## *Cooking on an improved wood-saving stove*

- To save energy and at the same time improve the health of the persons cooking food- to change from a three-stone stove to an improved and wood-saving stove. By doing so, you can reduce the firewood use by half- the project promoted this by constructing **5952 stoves**

## Improved stove



*A man cooking on an improved wood-saving stove*

## 2. Farm enterprise development

### Beekeeping enterprise



The project emphasises enterprise development for income generation: 240 initiated enterprises and 476 farmers trained in FaB

Farm enterprise development supports the establishment of structures and systems that enable sustainable development within the community through financial services, enterprise selection, marketing and value addition.



## 2.2 Rural micro finance

VSLA savings meeting & Co-save facilitators were facilitated with bicycles

### Achievements

- Farmers are capacitated on village saving and loan methodology,(VSLA) -285 farmers groups with 55 community facilitators are involved in VSLs





### 3. Farmers groups and organizations

- RESAPP is implemented through more than 3,000 formal and informal groups in East Africa, among them 400 are in Rwanda .The supported organisations are mainly small organizations (62% female members) consisting of common interest groups, training groups and financial services associations.



## 4. CAPACITY DEVELOPMENT AND TRAINING

- Staff and farmers trainings included: integrated pests and disease management, tree management, agroforestry techniques, lobby and advocacy, participatory monitoring and evaluation, advisory communication, business planning, value chain analysis, organizational development and financial services.



## 5. Lobby and advocacy work

- Developed a module on lobby and advocacy
- Training of staff on conflict resolution, management and leadership



# PARTNERSHIPS

- **Partnership with**
- ISAE: NCF funded project (Climate change mitigation and adaptation through innovative renewable energy sources and rainwater harvesting in urban areas of Rwanda )
- IPB: Establishment of Agroforestry Training Centre
- CIT/CIALCA: On farm participatory research
- NBDP: Biogas construction
- Barefoot Power Company: solar lamps
- + Districts, sector authority for farmer mobilization



# Challenges

- Climate change effects like heavy rains and long dry periods
- Weak CSOs making partnership a bit difficult to introduce



If no questions, thank you for  
your attention!

If questions, welcome